



Marin County Flood Control & Water Conservation District

Overview for Advisory Board members

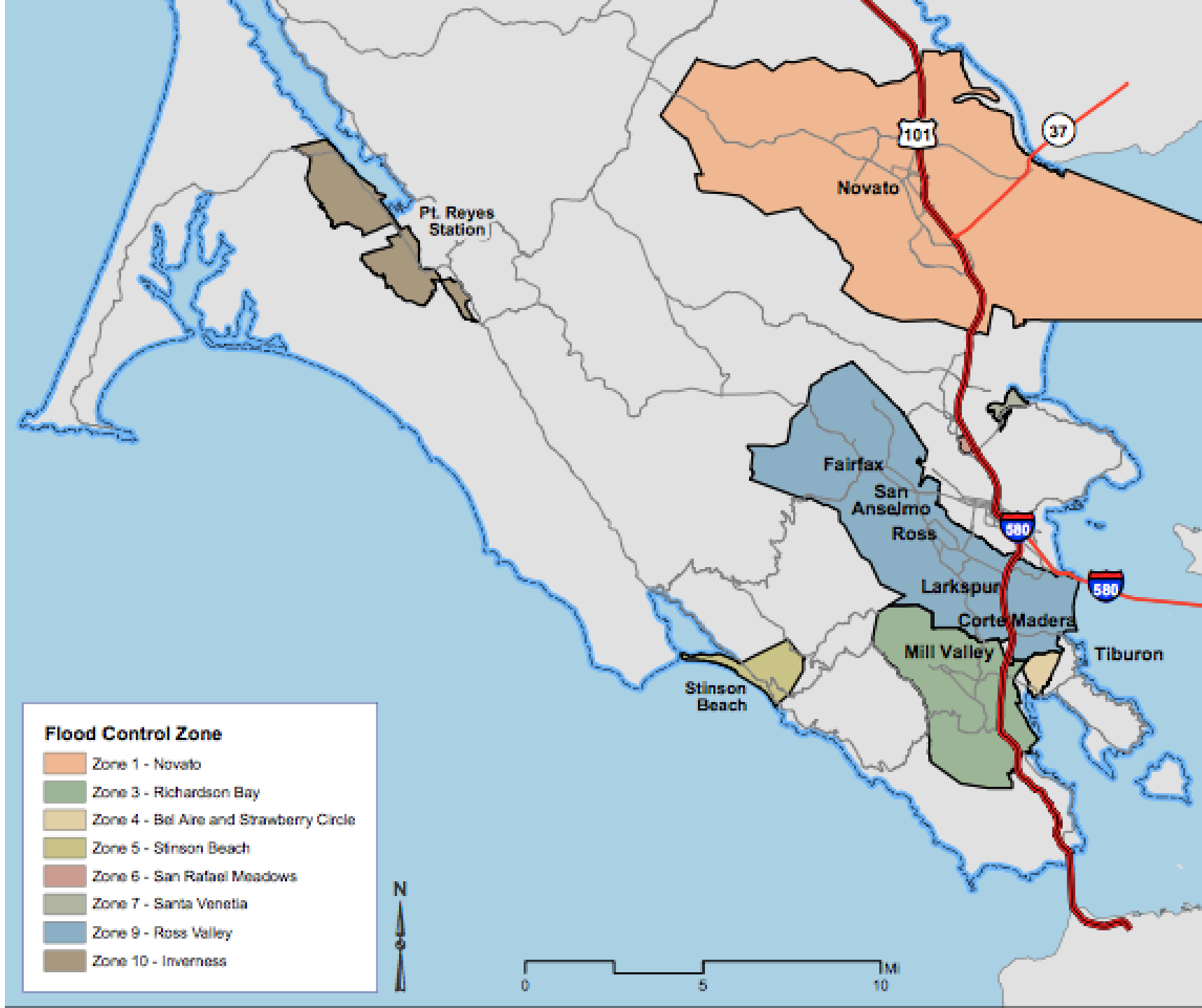
Quick Facts about “the District”



- Formed in 1953 by CA Water Code Appendix Chapter 68
- Is a dependent special district, separate from the County
- District boundary is same as County of Marin
- May establish “zones” – don’t have to be contiguous, may overlap or be entirely included within the bounds of another
- Zones include incorporated areas with consent of City
- Has broad “powers” but is not a regulatory authority
- Collects a portion of ad valorem (1%) property taxes in zones formed before Prop 13
- If approved by voters can also collect special assessments

Marin County Flood Control & Water Conservation District

Zone Map



Who are the District's representatives?



- **Governing Board** – County BOS wearing their District BOS “hat.”
- **Advisors** – 5 or 7 resident volunteers of each zone appointed by the BOS for 4-year terms.
- **Primary Stewards** – Public Works Water Resources division planners, engineers, technicians, and coordinators.
- **Officers and Employees** – County officers and employees act as ex officio officers and employees in similar roles on behalf of the District.

Common District Activities



- **Capital Improvement Projects**
 - Facility upgrades such as levees and pump stations
 - Creek restoration
 - New facility design and construction such as detention basins
- **Hydrologic & Hydraulic and Geotechnical Studies**
 - drainage studies
 - creek models
 - levee evaluations

Common District Activities Continued...



- **Facility maintenance where District has right of way (fee title, drainage or flood control easements, rights to enter, or funding to cities/towns with ROW)**
 - Pump stations
 - Creeks and ditches
 - Levees/berms and floodwalls
 - Major drains/pipes and flowgates
 - Detention basins
- **Development of asset management system**

Common District Activities Continued...



- Planning referrals from Cities/Towns/County
- Manage encroachments onto District lands or easements
- Routing general inquiries
- Outreach, public meetings, and advisory board meetings

Not District Authority:



- Street & drain design, installation, upgrades, and maintenance.
- Floodplain regulation.
- Private property drainage facilities.
- General water pollution control (MCSTOPPP).
- Non-flood storm hazards such as wind, landslides, erosion.
- Non-stormwater functional areas such as drinking water, sewage, and habitat.
- General climate change and sea level rise adaptation.
- Environmental justice.

➤ **But District *can* be and has been a Watershed Partner in these areas. Exert influence vs. control.**

Proposed Comprehensive Watershed and Flood Mitigation Plan

- 1) Initial scoping meeting held with Marin City CSD and Shore Up Marin City in February.
- 2) Will work with the broader community, advisory board, and partner organizations to get additional feedback on the scope over the next month.
- 3) Will review the final scope and cost estimate for the plan with the advisory board in May.
- 4) Prepare a Request for Proposals (RFP) in close coordination with community organizations, with particular attention to coming to agreement on a new evaluation criteria and selection process.
- 5) Work with partners and consultant to begin planning in summer 2021.

Proposed Comprehensive Watershed and Flood Mitigation Plan

Summary of Latest Scope:

- 1) Establish a **Local Task Force** with representatives to be determined by the local community.
- 2) Review existing studies, plans, and historic mapping.
- 3) Review an **environmental assessment** of reported unassessed superfund sites, top priority being at Phillips Drive.
- 4) Refine the model and alternatives from the Wood Rodgers model and develop new alternatives to **maintain access** through Donahue Street, Drake Avenue, and Phillips Drive in **10-year floods**, *as well as address unmet maintenance and rehabilitation needs of existing public and private facilities in the Marin City watershed*.

Proposed Comprehensive Watershed and Flood Mitigation Plan

Summary of Latest Scope Continued:

- 5) Alternatives consist of a suite of potential mitigation measures including:
- *upper watershed to reduce debris flow and erosion risk,*
 - *open channel measures to reduce flooding and erosion risk,*
 - *stormwater detention measures,*
 - *storm drain system additions and upgrades (incl. pump stations) within the Marin City watershed as well as investigating feasibility of sending storm drainage down Donahue to Waldo Point,*
 - *sediment removal,*
 - *flood barriers/gates,*
 - *structure elevation/floodproofing,*
 - *green infrastructure to treat roadway runoff and*
 - *other mitigations of stormwater pollution sources.*

Proposed Comprehensive Watershed and Flood Mitigation Plan

Summary of Latest Scope Continued:

- 6) A comprehensive watershed and flood mitigation plan that describes the history of flooding, summarizes items 1-5, and provides **cost estimates, ranking criteria, and next steps** for priority mitigation measures.
- The final document would be incorporated into the 2023 update to the Marin County Multi-Jurisdictional Local Hazard Mitigation Plan.