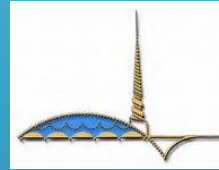


COVE STORMWATER PUMP STATION PROJECT UPDATE



MARIN COUNTY FLOOD CONTROL & CONSERVATION DISTRICT

FLOOD CONTROL ZONE No. 4

12/7/2017

Cove Shopping Center



PROJECT VICINITY MAP

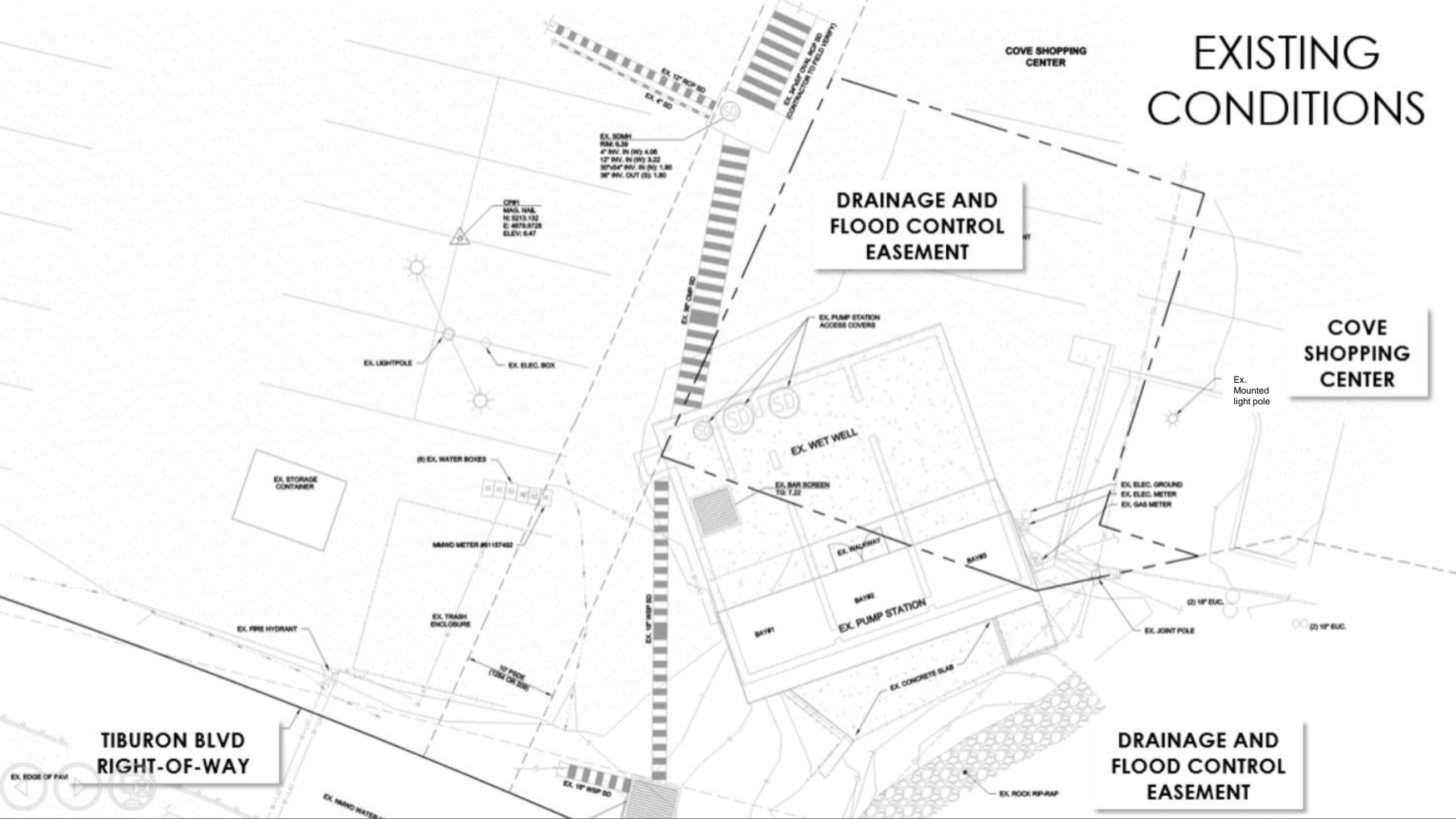
COVE STORMWATER PUMP STATION PROJECT GOALS

- ▶ UPGRADE CAPACITY TO MEET PROJECTED INCREASED STORM WATER FLOWS
- ▶ REPLACE OLDER SYSTEM COMPONENTS (PUMPS, ELECTRICAL SYSTEM, BAR SCREENS)
- ▶ INSTALL BACK-UP GENERATOR & SCADA
- ▶ INCREASE EFFICIENCY & REDUCE MAINTENANCE OPERATIONS
- ▶ MODIFY STORM DRAIN INLET TO HELP INCREASE PUMPING EFFICIENCY
- ▶ INCORPORATE SEA LEVEL RISE ADPATATION MEASURES INTO DESIGN
(Raise Equipment off of floor, Prep for back flow prevention on discharges)



COVE PUMP STATION EXISTING CONDITIONS

EXISTING CONDITIONS



COVE SHOPPING CENTER

DRAINAGE AND FLOOD CONTROL EASEMENT

COVE SHOPPING CENTER

Ex. Mounted light pole

DRAINAGE AND FLOOD CONTROL EASEMENT

TIBURON BLVD RIGHT-OF-WAY

EX. EDGE OF PAV

EX. MMHO WATER

PROPOSED CONDITIONS

**TEMPORARY
CONSTRUCTION
EASEMENT**

**DRAINAGE AND
FLOOD CONTROL
EASEMENT**

**COVE
SHOPPING
CENTER**

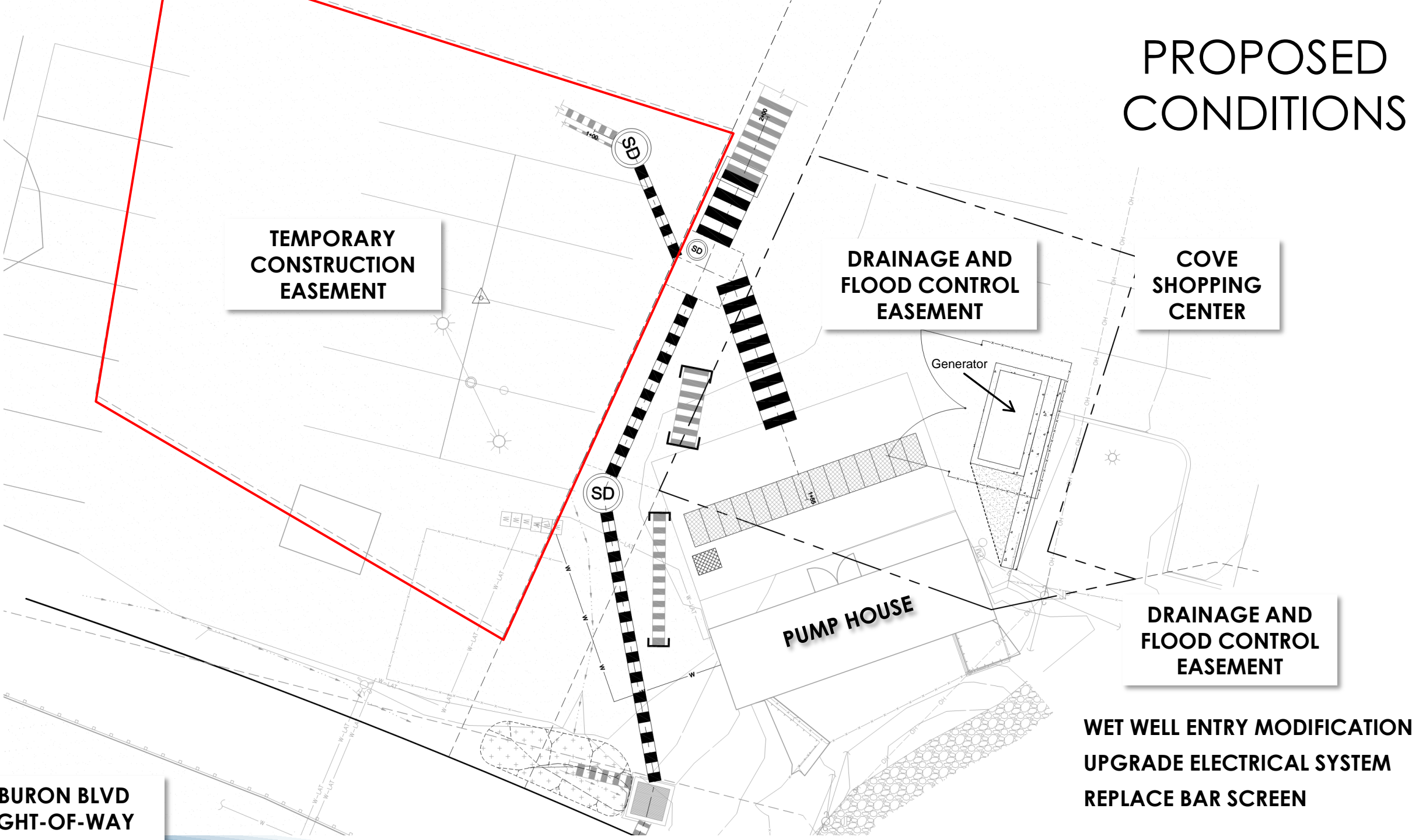
Generator

PUMP HOUSE

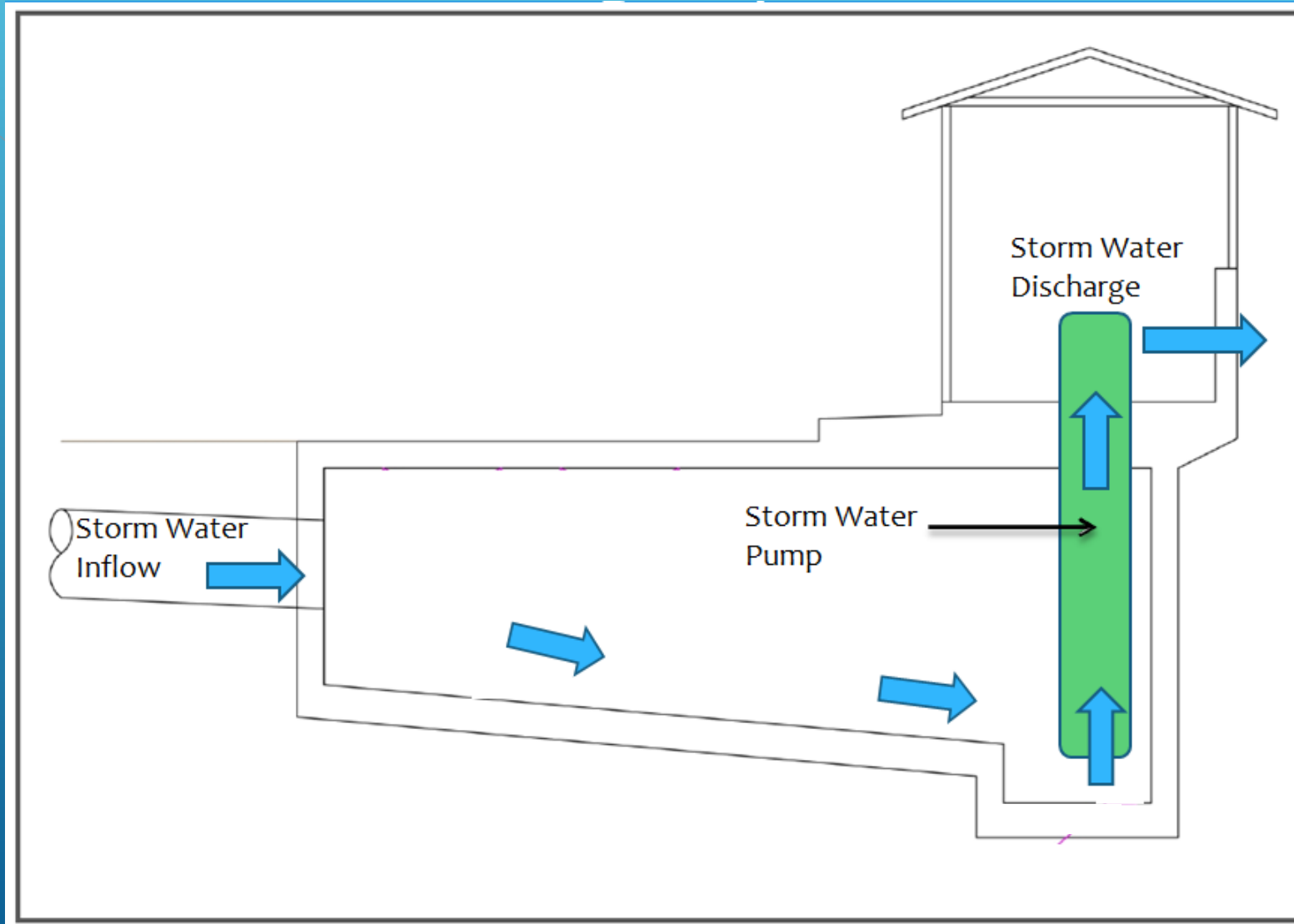
**DRAINAGE AND
FLOOD CONTROL
EASEMENT**

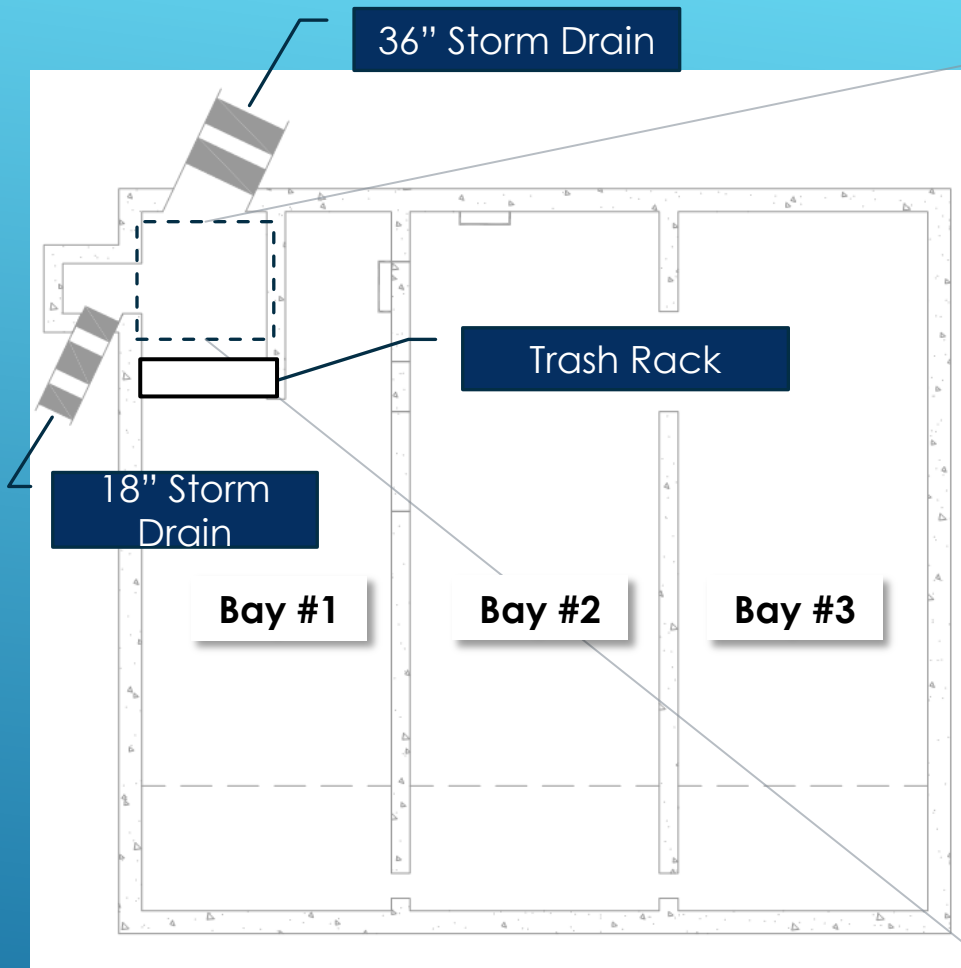
**WET WELL ENTRY MODIFICATIONS
UPGRADE ELECTRICAL SYSTEM
REPLACE BAR SCREEN**

**TIBURON BLVD
RIGHT-OF-WAY**

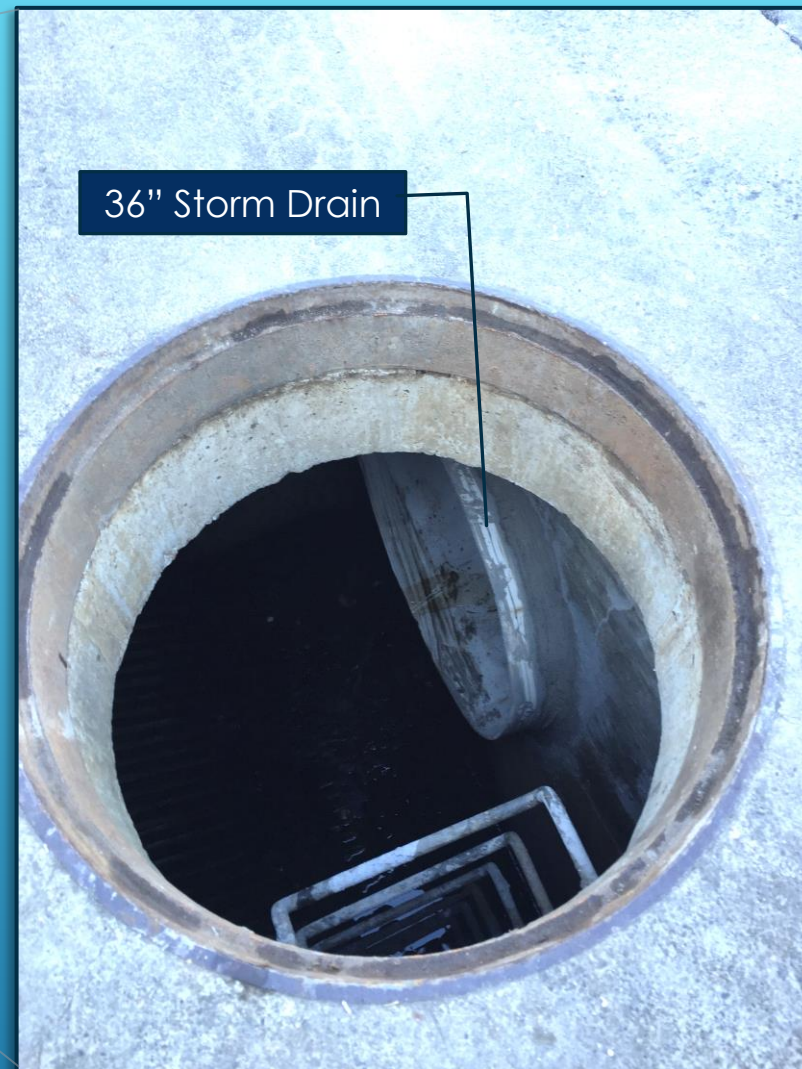


WET WELL SCHEMATIC

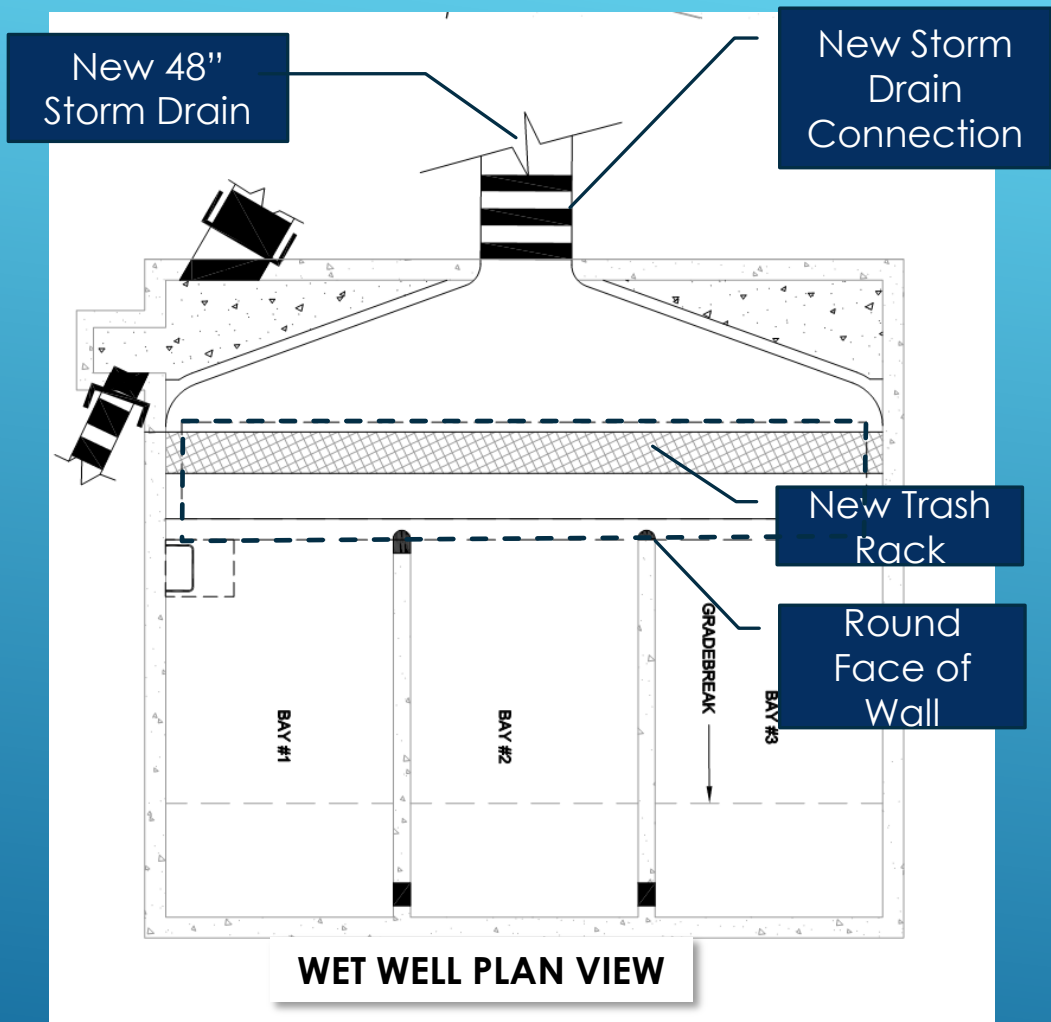




WET WELL PLAN VIEW



WET WELL EXISTING CONDITIONS



EXAMPLE OF NEW STORM DRAIN CONNECTION

WET WELL PROPOSED IMPROVEMENTS (INCLUDES ENHANCED MAINTENANCE ACCESS)



New Standby
Generator with
Sound
Attenuation

**North Francisco Blvd
Pump Station**



Trash Rack

**Kerner Blvd Pump
Station**

PUMP STATION IMPROVEMENTS EXAMPLES

LONG TERM PUMP STATION UPGRADES

ITEM No.	DESCRIPTION
1	Mob/Demob
2	New Motor Control Center
3	Backup Generator and ATS
4	New Pumps (21,000 gpm capacity), Tubes, Discharges
5	Misc. Electrical Improvements
6	Modify Wet Well
7	New Wet Well Access Hatches
8	New Trash Rack, Fence, Etc.
9	New Storm Drain Pipes
10	Misc. Site Items

▶ **SCHAAF & WHEELER - \$2.4 Million**

▶ **CSW | ST2 - \$1.9 Million +**

CSW | ST2 Contract Amount (\$290,170) = \$2.2 Million

OPINION OF PROBABLE CONSTRUCTION COST

PROJECT SCHEDULE

- ❑ DESIGN REVIEW COMPLETE – WINTER 2017
 - ❑ CEQA/PERMITTING COMPLETE – WINTER 2017
 - ❑ BIDDING – WINTER 2017-18
 - ❑ AWARD PROJECT – SPRING 2018
 - ❑ CONSTRUCTION – SPRING TO FALL 2018
- 