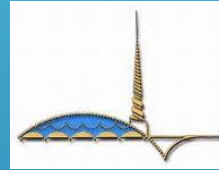


# COVE STORMWATER PUMP STATION PROJECT UPDATE



MARIN COUNTY FLOOD CONTROL & CONSERVATION DISTRICT

FLOOD CONTROL ZONE No. 4

9/28/2017

# Cove Shopping Center



# PROJECT VICINITY MAP

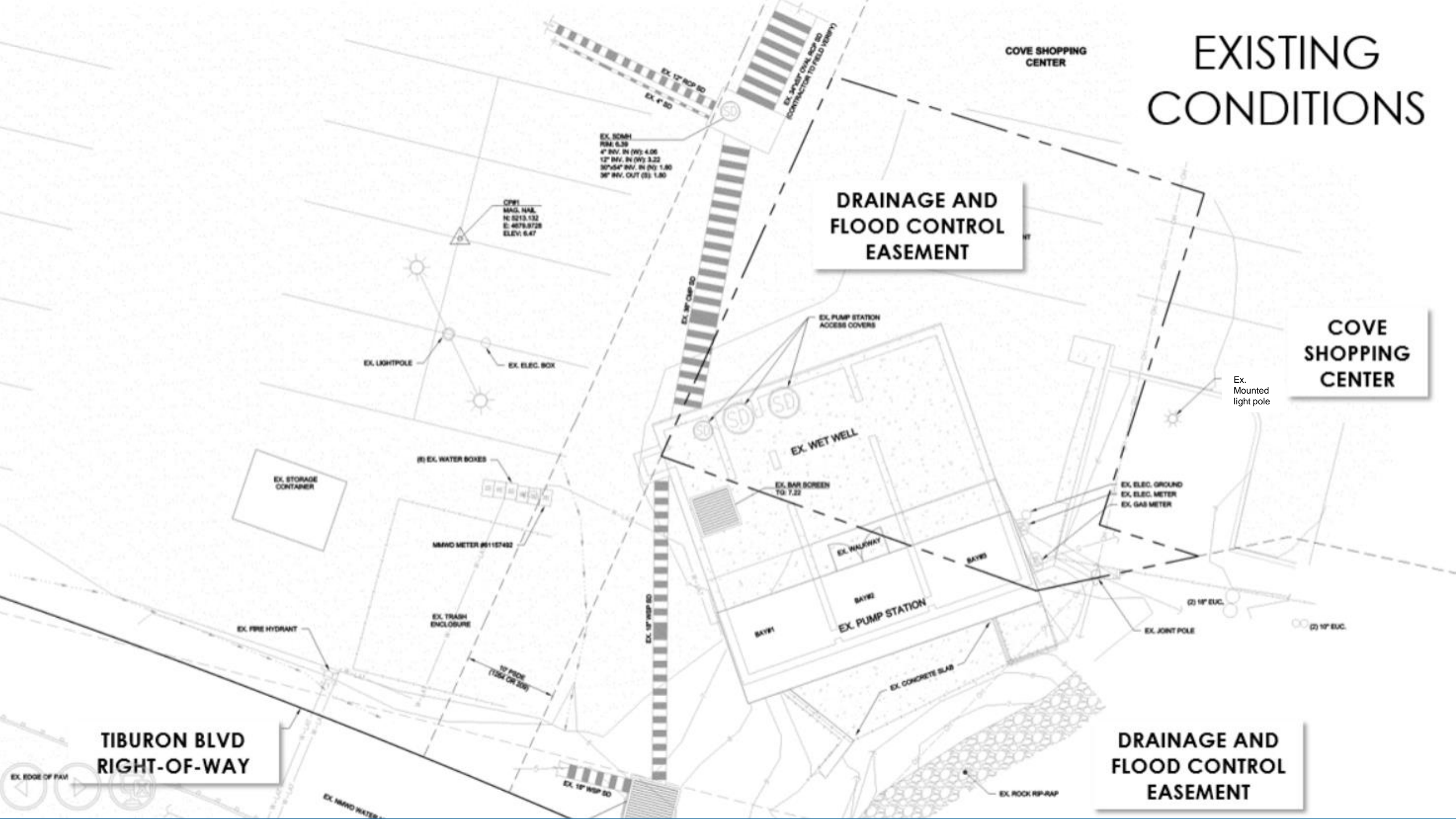
# COVE STORMWATER PUMP STATION PROJECT GOALS

- ▶ UPGRADE CAPACITY TO MEET PROJECTED INCREASED STORM WATER FLOWS
- ▶ REPLACE OLDER SYSTEM COMPONENTS (PUMPS, ELECTRICAL SYSTEM, BAR SCREENS)
- ▶ INSTALL BACK-UP GENERATOR & SCADA
- ▶ INCREASE EFFICIENCY & REDUCE MAINTENANCE OPERATIONS
- ▶ MODIFY STORM DRAIN INLET TO HELP INCREASE PUMPING EFFICIENCY
- ▶ INCORPORATE SEA LEVEL RISE CONCEPTS INTO DESIGN  
(raise equipment off of floor, prep for back flow prevention on discharges)



# COVE PUMP STATION EXISTING CONDITIONS

# EXISTING CONDITIONS



COVE SHOPPING CENTER

DRAINAGE AND FLOOD CONTROL EASEMENT

COVE SHOPPING CENTER

Ex. Mounted light pole

DRAINAGE AND FLOOD CONTROL EASEMENT

TIBURON BLVD RIGHT-OF-WAY

EX. EDGE OF PAV

EX. MAND. WATER

EX. 18" WSP SD

EX. 36" WSP SD

EX. 30" CMP SD

EX. 12" RCP SD  
EX. 4" SD

EX. 12" RCP SD  
CONTRACTOR TO FIELD 100874

EX. WET WELL

EX. BAR SCREEN TO: 7.22

EX. WALKWAY

EX. PUMP STATION

EX. CONCRETE SLAB

EX. ROCK RIP-RAP

EX. ELEC. GROUND  
EX. ELEC. METER  
EX. GAS METER

(2) 11" EUC.

(2) 10" EUC.

EX. JOINT POLE

EX. LIGHTPOLE

EX. ELEC. BOX

(3) EX. WATER BOXES

EX. STORAGE CONTAINER

EX. FIRE HYDRANT

EX. TRASH ENCLOSURE

MMWD METER #61157482

# PROPOSED CONDITIONS

**TEMPORARY  
CONSTRUCTION  
EASEMENT**

**DRAINAGE AND  
FLOOD CONTROL  
EASEMENT**

**COVE  
SHOPPING  
CENTER**

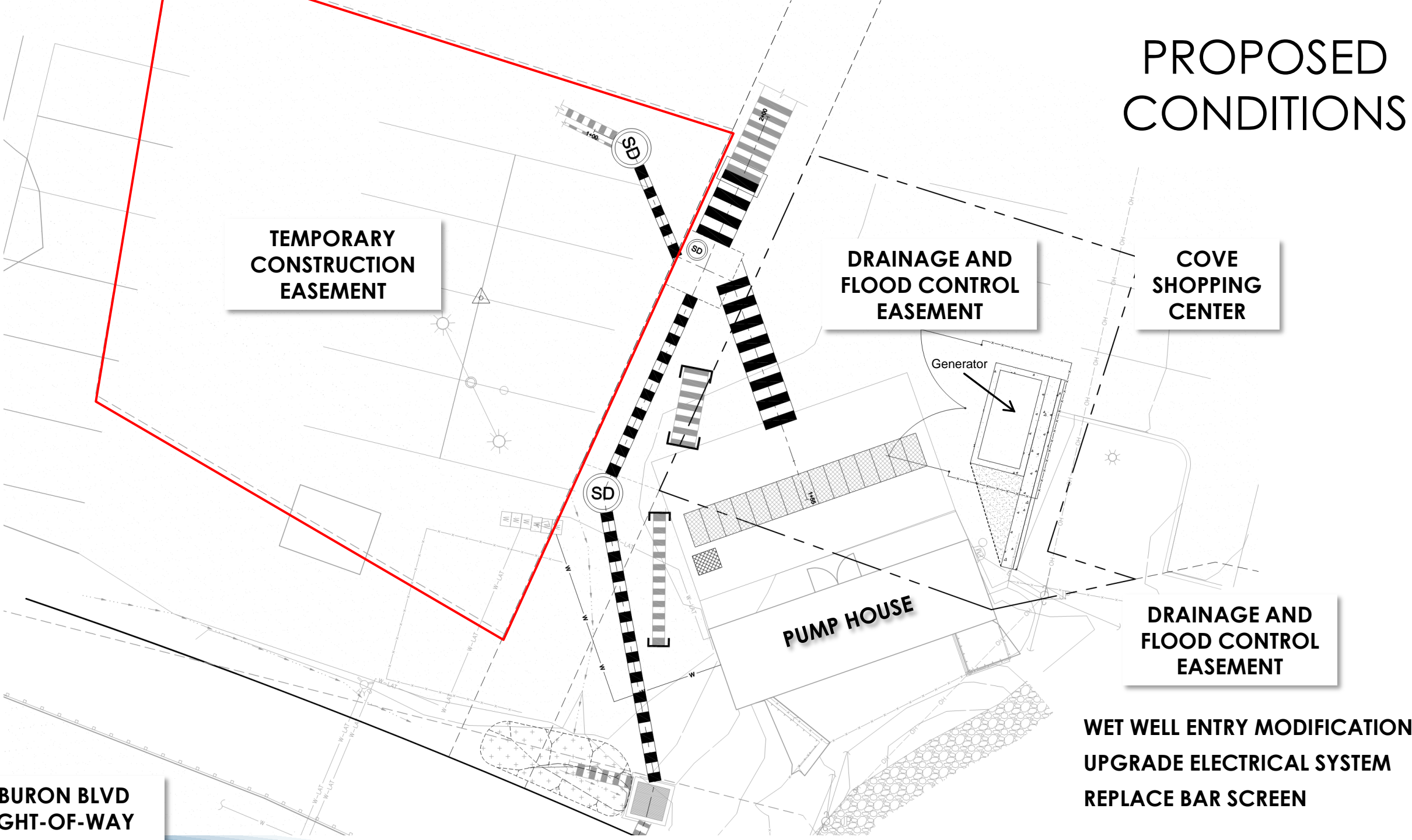
Generator

**PUMP HOUSE**

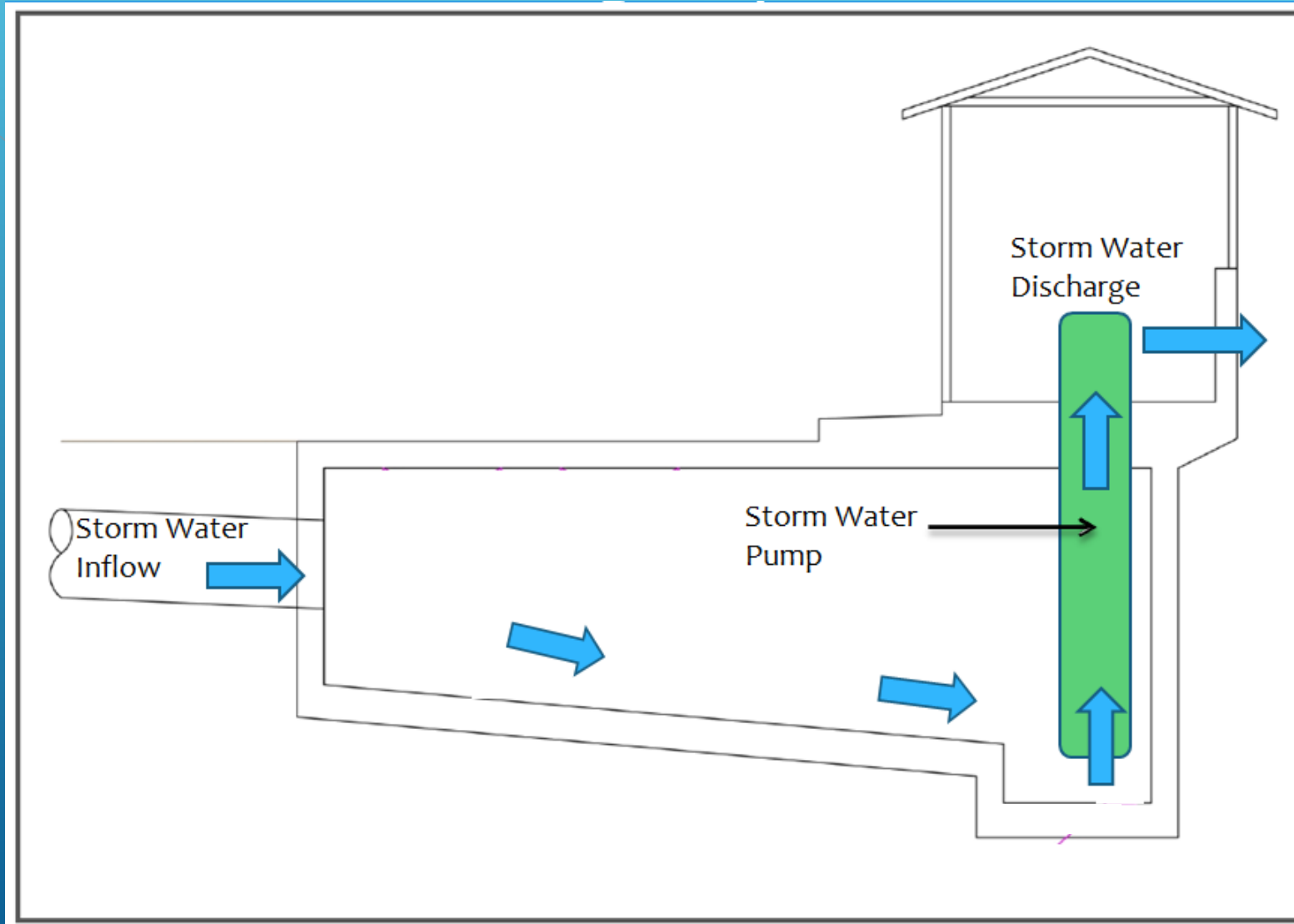
**DRAINAGE AND  
FLOOD CONTROL  
EASEMENT**

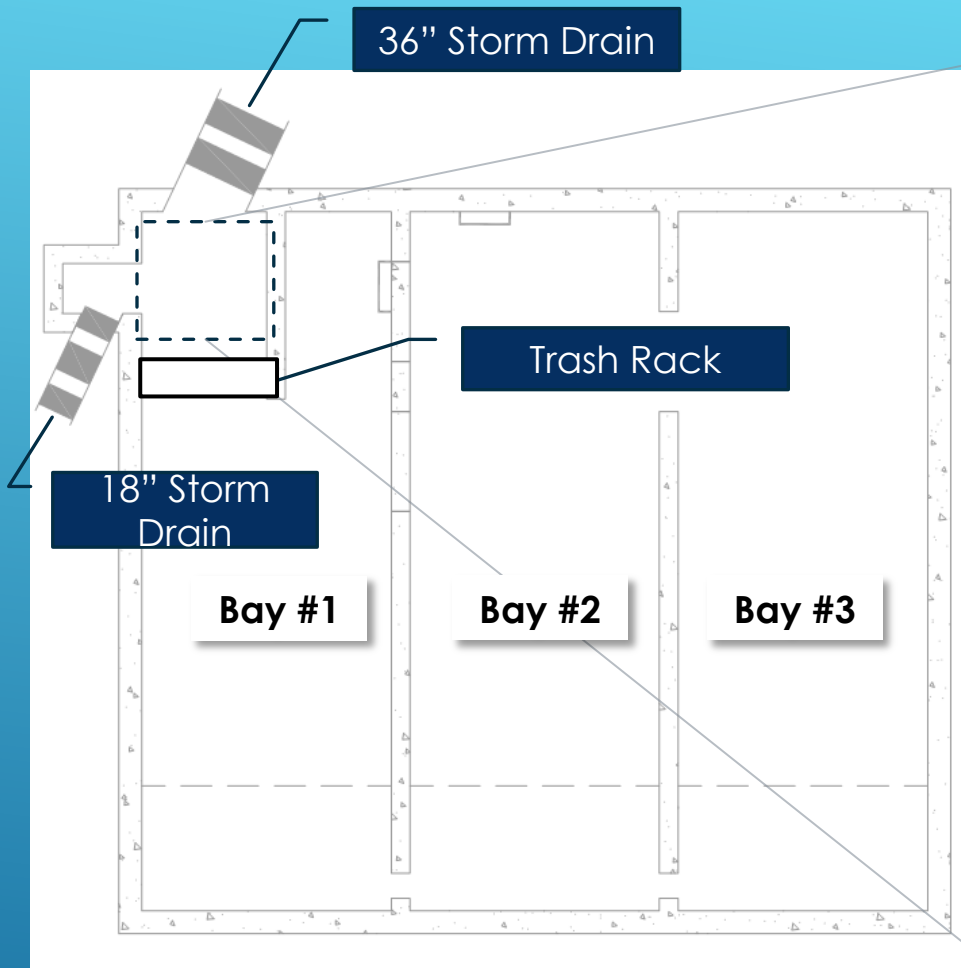
**WET WELL ENTRY MODIFICATIONS  
UPGRADE ELECTRICAL SYSTEM  
REPLACE BAR SCREEN**

**TIBURON BLVD  
RIGHT-OF-WAY**

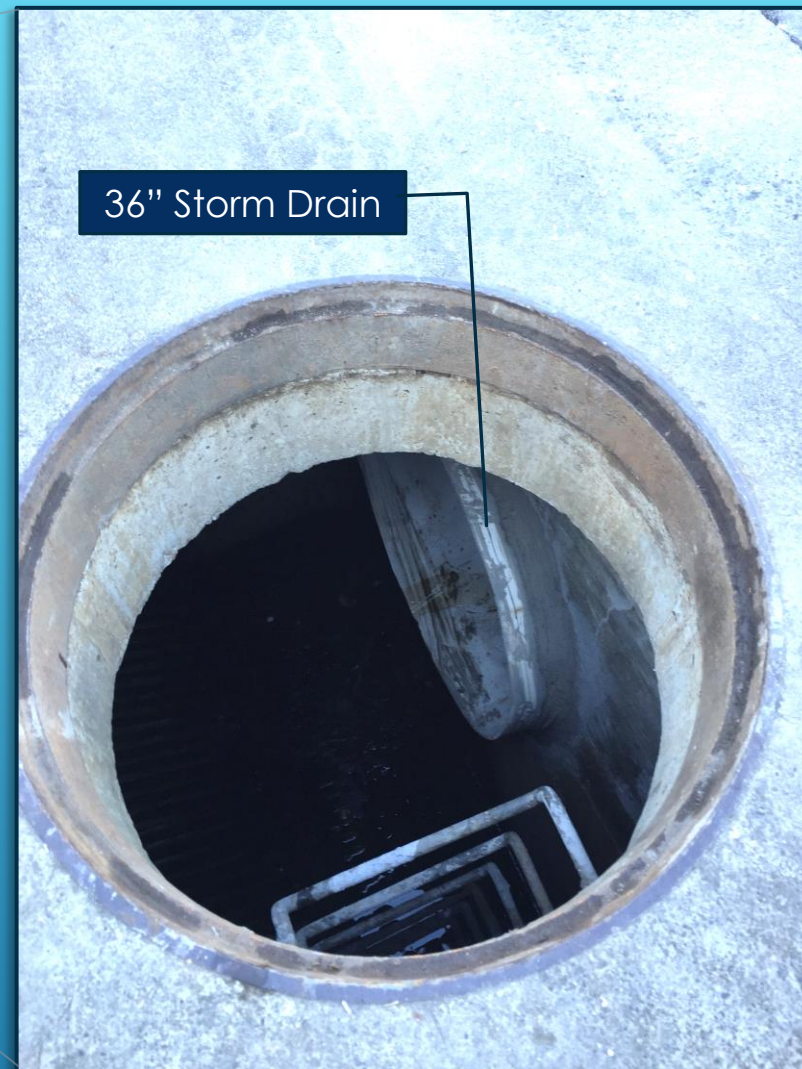


# WET WELL SCHEMATIC



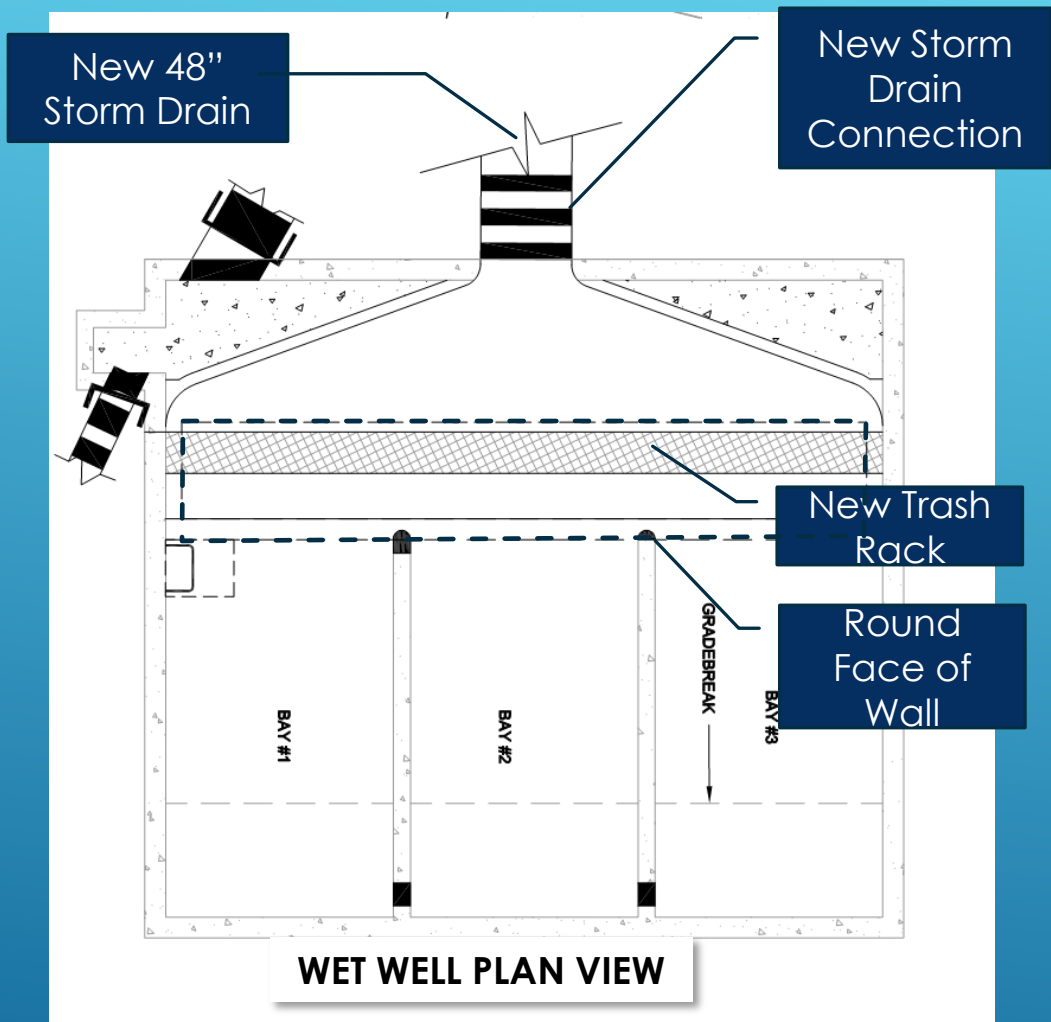


**WET WELL PLAN VIEW**



# WET WELL EXISTING CONDITIONS





EXAMPLE OF NEW STORM DRAIN CONNECTION

# WET WELL PROPOSED IMPROVEMENTS (INCLUDES ENHANCED MAINTENANCE ACCESS)



New Standby  
Generator with  
Sound  
Attenuation

**North Francisco Blvd  
Pump Station**



Trash Rack

**Kerner Blvd Pump  
Station**

# PUMP STATION IMPROVEMENTS EXAMPLES

# LONG TERM PUMP STATION UPGRADES

ITEM No.	DESCRIPTION
1	Mob/Demob
2	New Motor Control Center
3	Backup Generator and ATS
4	New Pumps (21,000 gpm capacity), Tubes, Discharges
5	Misc. Electrical Improvements
6	Modify Wet Well
7	New Wet Well Access Hatches
8	New Trash Rack, Fence, Etc.
9	New Storm Drain Pipes
10	Misc. Site Items

▶ **SCHAAF & WHEELER - \$2.4 Million**

▶ **CSW | ST2 - \$1.9 Million +**

**CSW | ST2 Contract Amount (\$290,170) = \$2.2 Million**

**OPINION OF PROBABLE CONSTRUCTION COST**

# PROJECT SCHEDULE

- ❑ DESIGN REVIEW COMPLETE – WINTER 2017
  - ❑ CEQA/PERMITTING COMPLETE – WINTER 2017
  - ❑ BIDDING – WINTER 2017-18
  - ❑ AWARD PROJECT – SPRING 2018
  - ❑ CONSTRUCTION – SPRING TO FALL 2018
- 