



# Marin County Flood Control & Water Conservation District

Overview for Advisory Board members

# Quick Facts about “the District”

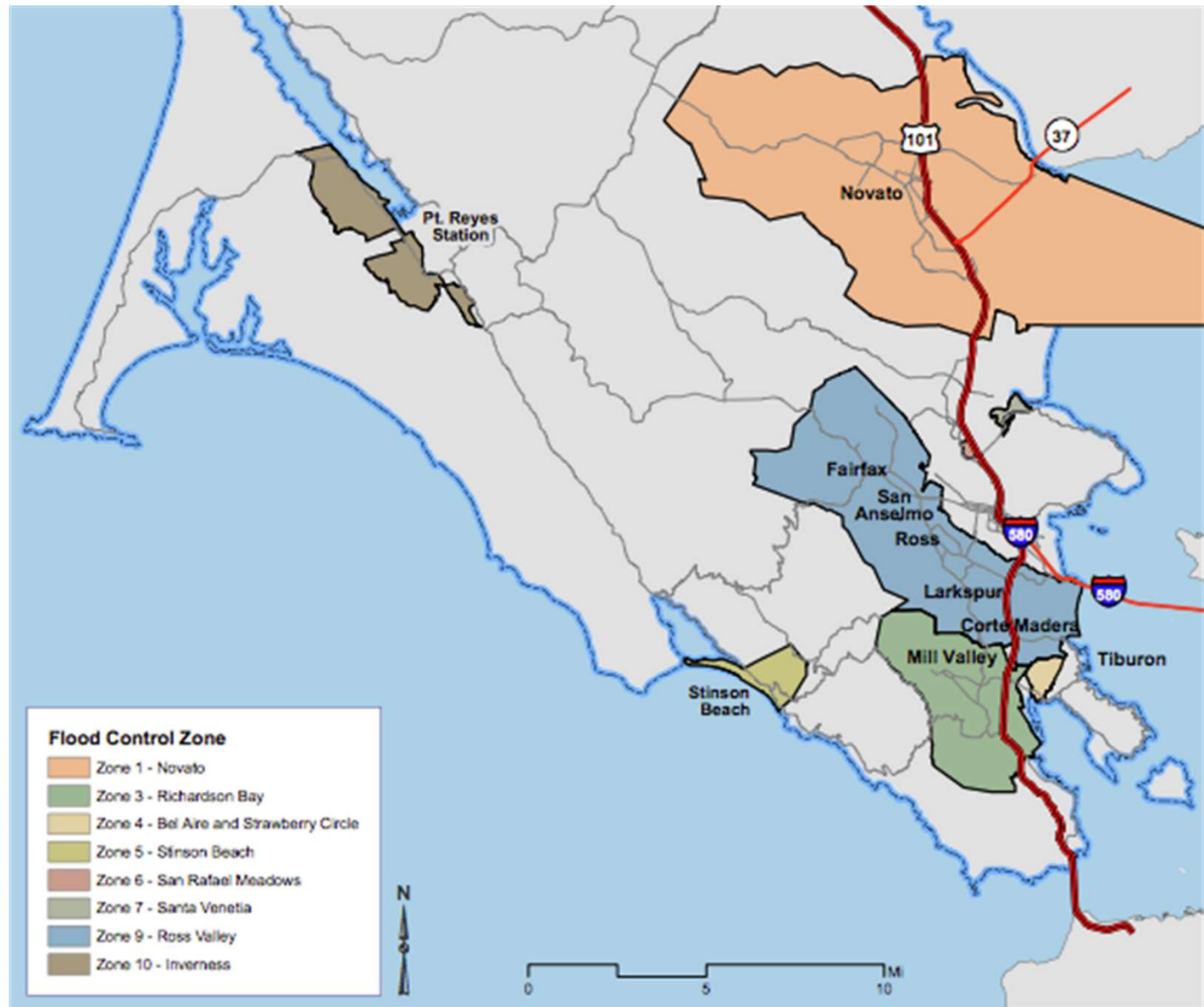
---



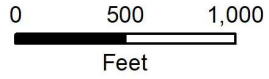
- Formed in 1953 by CA Water Code Appendix Chapter 68
- Is a dependent special district, separate from the County
- District boundary is same as County of Marin
- Zones include incorporated areas with consent of City
- Has broad “powers” but is not a regulatory authority
- Collects a portion of ad valorem (1%) property taxes in zones formed before Prop 13
- If approved by voters can also collect special assessments
- **Governing Board** – District Board of Supervisors
- **Advisors** – 5 or 7 resident volunteers of each zone appointed by the BOS for 4-year terms.

# Marin County Flood Control & Water Conservation District

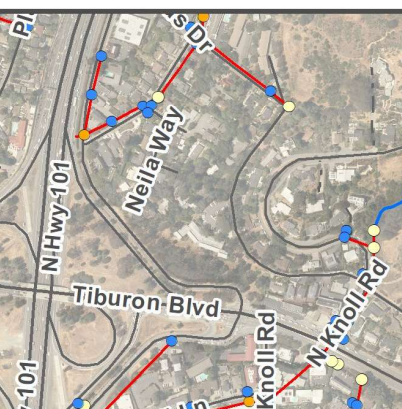
## Flood Zone Map



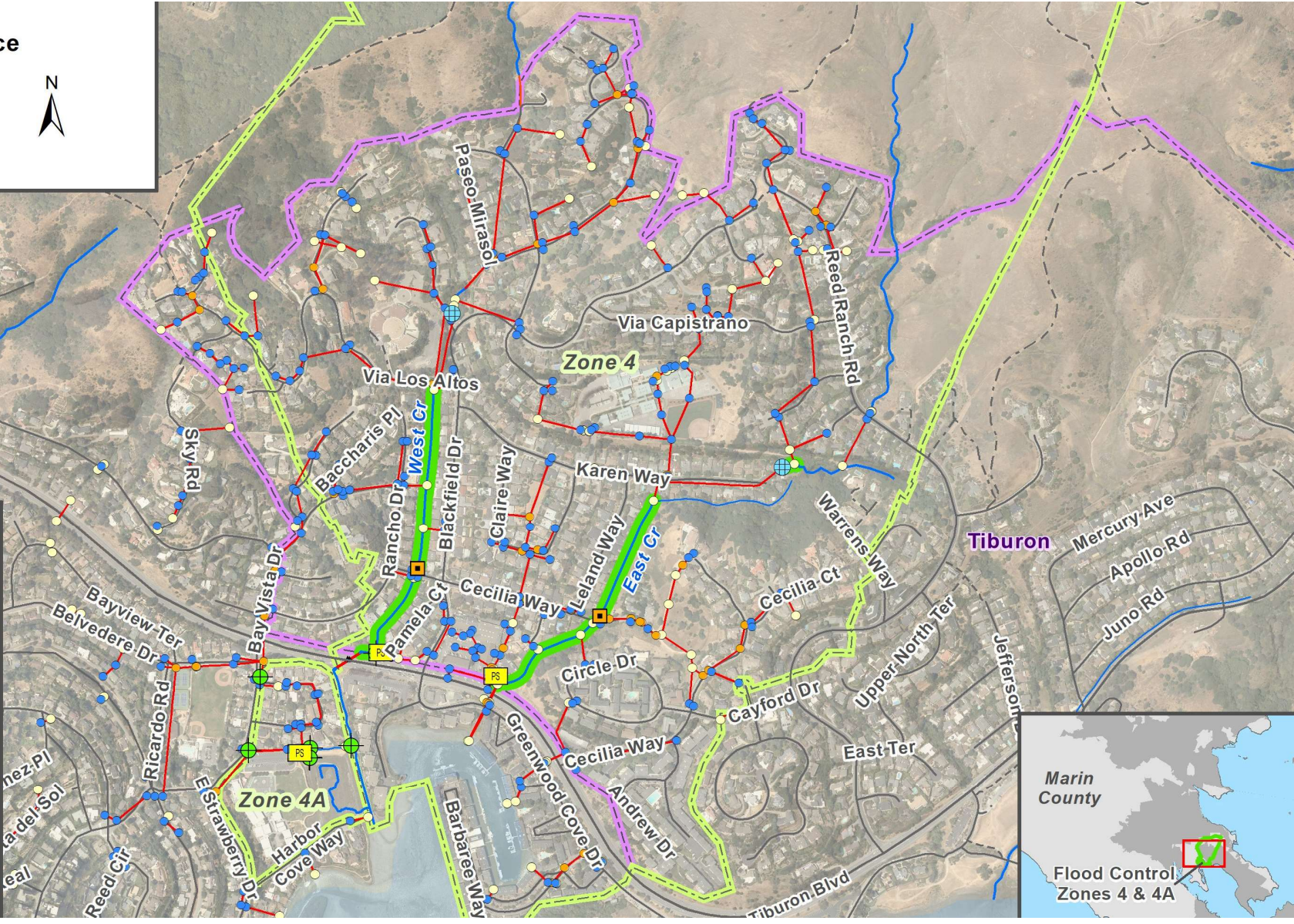
# Zones 4 and 4A Facilities and Maintenance



map date 04-27-2022



- Storm Drain System**
- Pump Station
  - Tide Gate
  - Trash rack
  - Culvert Bridge
  - Catch Basin
  - Manhole
  - Other Structure
  - Pipe / Culvert
  - Channel Maintenance
  - Flood Control Zones 4 and 4A Boundary



# Flood Zone Maintenance

---

- **Facility maintenance where District has right of way (fee title, drainage or flood control easements, rights to enter, or funding to cities/towns with ROW)**
  - Pump stations
  - Creeks and ditches
  - Levees/berms and floodwalls
  - Major drains/pipes and flow gates
  - Detention basins
- **Development of asset management system**



# Flood Zone Capital Projects

---

- **Capital Improvement Projects**

- Facility upgrades to pump stations and levee
- Creek restoration to restore floodplains
- New facility design and construction

- **Hydrologic & Hydraulic and Geotechnical Studies**

- drainage studies
- creek models
- levee evaluations



# Flood Zone Activities Continued...

---



- Planning referrals from Cities/Towns/County
- Manage encroachments onto District lands or easements
- Routing general inquiries
- Outreach, public meetings, and advisory board meetings

## Not District Authority:

- Street & drain design, installation, upgrades, and maintenance.
- Floodplain regulation
- Private property drainage facilities
- General water pollution control (MCSTOPPP)
- Non-stormwater utilities such as drinking water, sewage
- General climate change and sea level rise adaptation

➤ **But District *can* be and has been a Watershed Partner in these areas. Exert influence vs. control.**





# Contact Information

- General inquiries

[floodinquiry@marincounty.org](mailto:floodinquiry@marincounty.org)

Hannah Lee, Senior Civil Engineer

[hlee@marincounty.org](mailto:hlee@marincounty.org)

Liz Lewis, Water Resources Manager

[lizlewis@marincounty.org](mailto:lizlewis@marincounty.org)

[www.marinwatersheds.org](http://www.marinwatersheds.org)