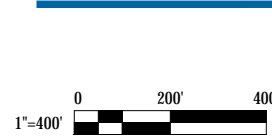




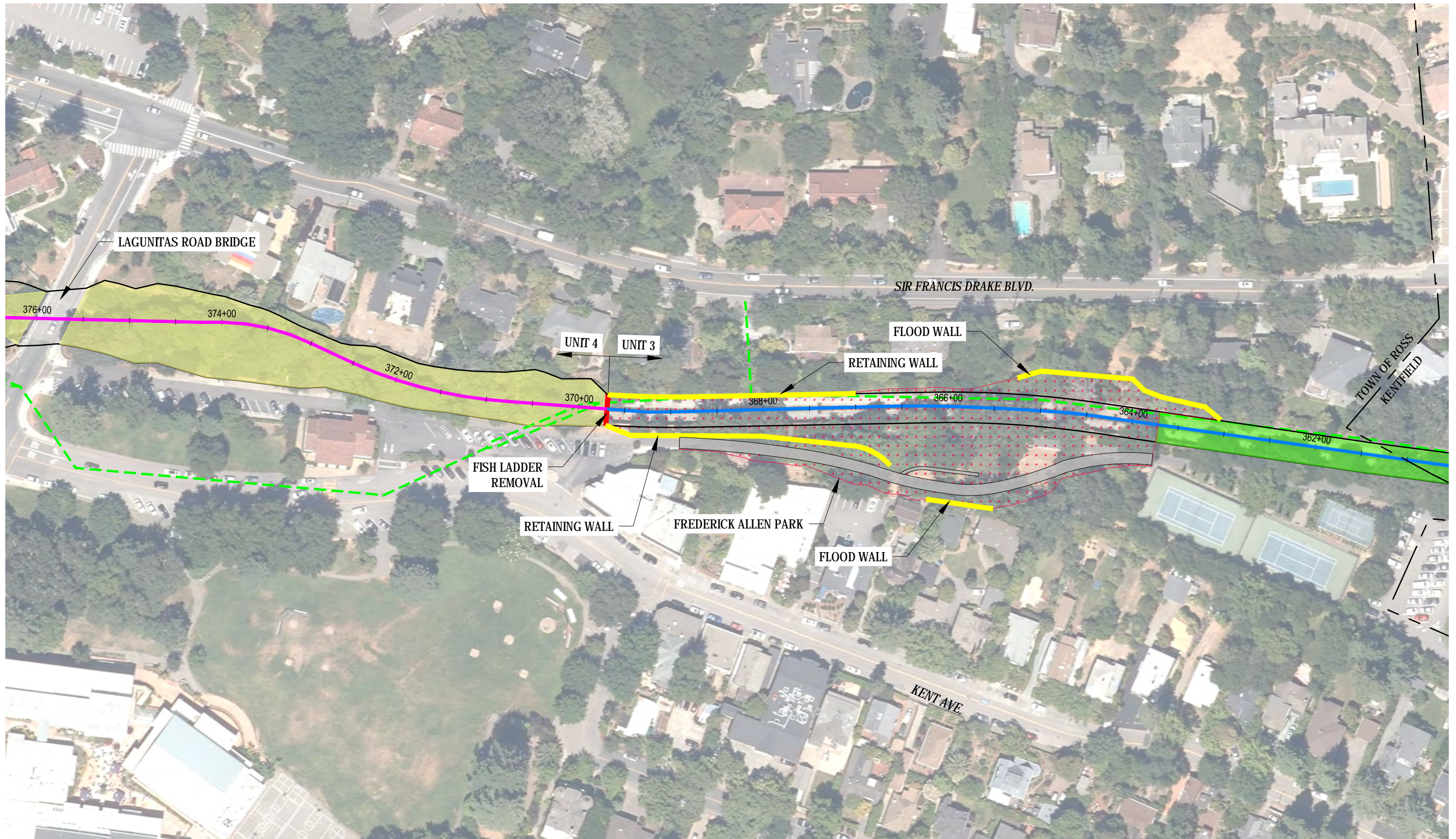
- FISH PASSAGE TRANSITION GRADING
- ALLEN PARK RIPARIAN CORRIDOR
- NEW FISH POOLS
- LOW CHANNEL CONCRETE REMOVAL
- STORM DRAIN PUMP STATION
- (E) RVSD SAN. SEWER
- FLOOD WALL

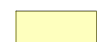










- USACE PROJECT UNIT 2
- USACE PROJECT UNIT 3
- USACE PROJECT UNIT 4
- CHANNEL BANK

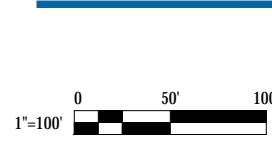


MARIN COUNTY FLOOD CONTROL
 Corte Madera Creek
 Flood Risk Management Project - Phase 1
 Project Components
 Overview

Job Number | 11188581
 Revision |
 Date | Aug. 2020
Figure 01a



- | | | |
|---|--|--|
|  FISH PASSAGE TRANSITION GRADING |  STORM DRAIN PUMP STATION |  USACE PROJECT UNIT 2 |
|  ALLEN PARK RIPARIAN CORRIDOR |  (E) RVSD SAN. SEWER |  USACE PROJECT UNIT 3 |
|  NEW FISH POOLS |  FLOOD WALL |  USACE PROJECT UNIT 4 |
|  LOW CHANNEL CONCRETE REMOVAL | |  CHANNEL BANK |



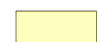










MARIN COUNTY FLOOD CONTROL
 Corte Madera Creek
 Flood Risk Management Project - Phase 1
 Project Components
 Allen Park Area

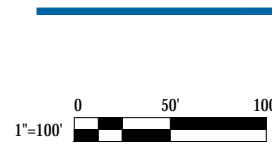
Job Number | 11188581
 Revision |

Date | Aug. 2020

Figure 01b



- | | | |
|---|--|--|
|  FISH PASSAGE TRANSITION GRADING |  STORM DRAIN PUMP STATION |  USACE PROJECT UNIT 2 |
|  ALLEN PARK RIPARIAN CORRIDOR |  (E) RVSD SAN. SEWER |  USACE PROJECT UNIT 3 |
|  NEW FISH POOLS |  FLOOD WALL |  USACE PROJECT UNIT 4 |
|  LOW CHANNEL CONCRETE REMOVAL | |  CHANNEL BANK |

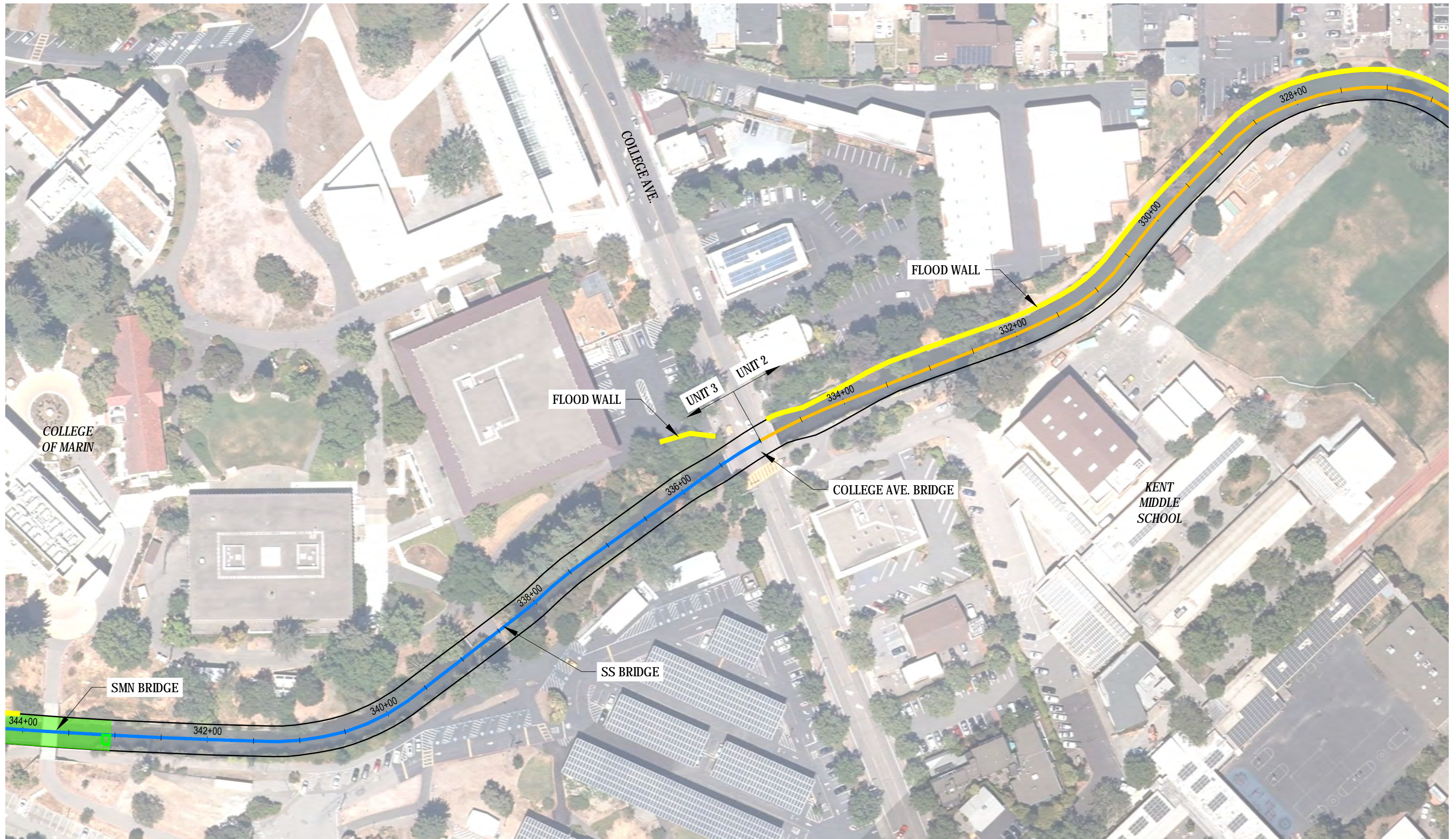


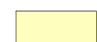










MARIN COUNTY FLOOD CONTROL
 Corte Madera Creek
 Flood Risk Management Project - Phase 1
 Project Components
 Allen Park to College of Marin

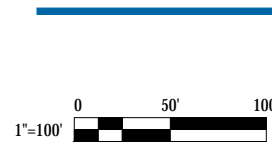
Job Number | 11188581
 Revision

Date | Aug. 2020

Figure 01c



- | | | |
|---|--|--|
|  FISH PASSAGE TRANSITION GRADING |  STORM DRAIN PUMP STATION |  USACE PROJECT UNIT 2 |
|  ALLEN PARK RIPARIAN CORRIDOR |  (E) RVSD SAN. SEWER |  USACE PROJECT UNIT 3 |
|  NEW FISH POOLS |  FLOOD WALL |  USACE PROJECT UNIT 4 |
|  LOW CHANNEL CONCRETE REMOVAL | |  CHANNEL BANK |

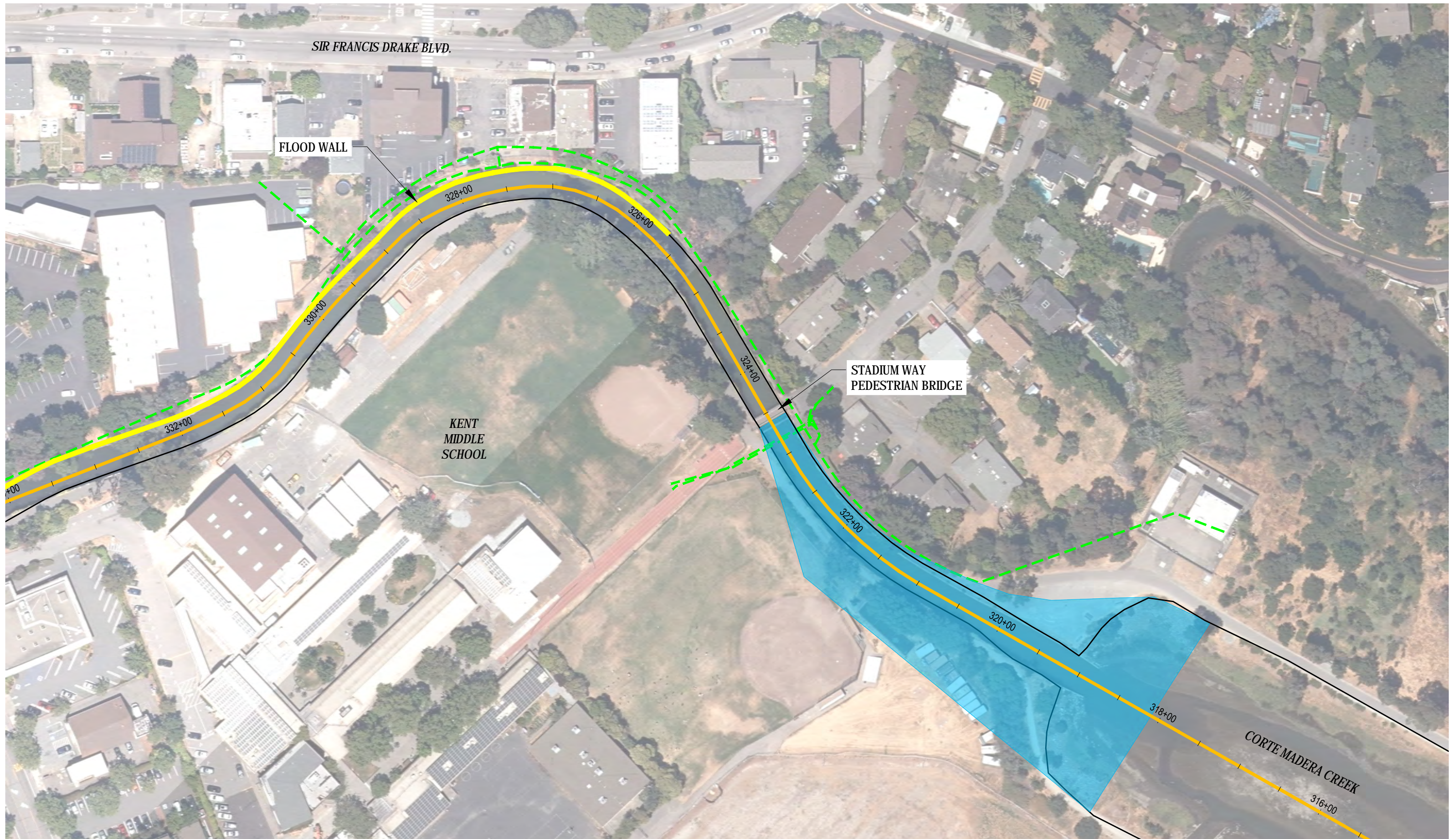


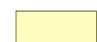










MARIN COUNTY FLOOD CONTROL
 Corte Madera Creek
 Flood Risk Management Project - Phase 1
 Project Components
 College of Marin to Kent Middle School

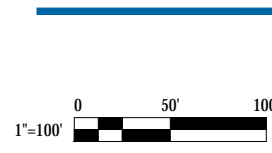
Job Number | 11188581
 Revision |

Date | Aug. 2020

Figure 01d



- | | | |
|---|--|--|
|  FISH PASSAGE TRANSITION GRADING |  STORM DRAIN PUMP STATION |  USACE PROJECT UNIT 2 |
|  ALLEN PARK RIPARIAN CORRIDOR |  (E) RVSD SAN. SEWER |  USACE PROJECT UNIT 3 |
|  NEW FISH POOLS |  FLOOD WALL |  USACE PROJECT UNIT 4 |
|  LOW CHANNEL CONCRETE REMOVAL | |  CHANNEL BANK |



MARIN COUNTY FLOOD CONTROL
 Corte Madera Creek
 Flood Risk Management Project - Phase 1
 Project Components
 Kent Middle School to Downstream Limit

Job Number | 11188581
 Revision
 Date | Aug. 2020

Figure 01e