

## Appendix B

---

### **Tree Removal Table and Landscaping Planting Plans**

#### **Tree Removal Table**

Frederick Allen Park Planting Plans

Lower Corte Madera Creek Planting Plan

## APPENDIX B

### Trees Proposed for Removal

Native	Latin Name	Common Name	DBH <sup>a</sup>	Tree Health Condition	Designation
<b>Fish Ladder Removal and Unit 4 Grading</b>					
Native	<i>Acer negundo</i>	Boxelder	19	Good or Excellent	Significant
Native	<i>Aesculus californica</i>	Buckeye	26	Good or Excellent	Significant
Native	<i>Alnus rhombifolia</i>	White alder	8	Good or Excellent	N/A
Native	<i>Alnus rhombifolia</i>	White alder	10	Good or Excellent	Protected
Native	<i>Alnus rhombifolia</i>	White alder	19	Good or Excellent	Significant
Native	<i>Alnus rhombifolia</i>	White alder	19.5	Good or Excellent	Significant
Native	<i>Alnus rhombifolia</i>	White alder	20.5	Good or Excellent	Significant
Native	<i>Fraxinus dipetala</i>	Two petaled ash	12	Good or Excellent	Significant
Native	<i>Fraxinus dipetala</i>	Two petaled ash	13	Good or Excellent	Significant
Native	<i>Quercus agrifolia</i>	Coast live oak	22	Good or Excellent	Significant
Native	<i>Salix lasiolepis</i>	Arroyo willow	8	Good or Excellent	Protected
Native	<i>Salix lasiolepis</i>	Arroyo willow	10	Good or Excellent	Protected
Native	<i>Salix lasiolepis</i>	Arroyo willow	11.5	Fair or Marginal	Protected
Native	<i>Salix lasiolepis</i>	Arroyo willow	14	Good or Excellent	Significant
Native	<i>Salix lasiolepis</i>	Arroyo willow	20	Good or Excellent	Significant
Native	<i>Salix lasiolepis</i>	Arroyo willow	24	Good or Excellent	Significant
Native	<i>Umbellularia californica</i>	California bay	10	Good or Excellent	Protected
Native	<i>Umbellularia californica</i>	California bay	22	Good or Excellent	Significant

## APPENDIX B

Native	Latin Name	Common Name	DBH <sup>a</sup>	Tree Health Condition	Designation
Non-Native	<i>Prunus laurocerasus</i>	Cherry laurel	15	Fair or Marginal	Significant
Non-Native	<i>Salix babylonica</i>	Weeping willow	18	Fair or Marginal	Significant
Non-Native	<i>Ulmus minor</i>	English elm	17	Good or Excellent	Significant
<b>Frederick Allen Park</b>					
Native	<i>Acer negundo</i>	Boxelder	7.5	Good or Excellent	N/A
Native	<i>Acer negundo</i>	Boxelder	12	Fair or Marginal	Protected
Native	<i>Acer negundo</i>	Boxelder	31.5	Fair or Marginal	Significant
Native	<i>Aesculus californica</i>	Buckeye	8	Poor or Hazard Tree	N/A
Native	<i>Aesculus californica</i>	Buckeye	9.5	Fair or Marginal	Protected
Native	<i>Aesculus californica</i>	Buckeye	10	Fair or Marginal	Protected
Native	<i>Aesculus californica</i>	Buckeye	10.5	Good or Excellent	Protected
Native	<i>Aesculus californica</i>	Buckeye	11	Good or Excellent	Protected
Native	<i>Aesculus californica</i>	Buckeye	17	Good or Excellent	Significant
Native	<i>Aesculus californica</i>	Buckeye	20	Fair or Marginal	Significant
Native	<i>Aesculus californica</i>	Buckeye	21	Good or Excellent	Significant
Native	<i>Aesculus californica</i>	Buckeye	36	Fair or Marginal	Significant
Native	<i>Aesculus californica</i>	Buckeye	48.5	Good or Excellent	Significant
Native	<i>Hesperocyparis macrocarpa</i>	Monterey cypress	12.5	Fair or Marginal	Significant
Native	<i>Hesperocyparis macrocarpa</i>	Monterey cypress	21	Good or Excellent	Significant
Native	<i>Hesperocyparis macrocarpa</i>	Monterey cypress	38.5	Good or Excellent	Significant
Native	<i>Pinus radiata</i>	Monterey pine	31.5	Good or Excellent	Significant

## APPENDIX B

Native	Latin Name	Common Name	DBH <sup>a</sup>	Tree Health Condition	Designation
Native	<i>Pinus radiata</i>	Monterey pine	33	Fair or Marginal	Significant
Native	<i>Pinus radiata</i>	Monterey pine	35	Good or Excellent	Significant
Native	<i>Populus trichocarpa</i>	Black cottonwood	4	Fair or Marginal	N/A
Native	<i>Populus trichocarpa</i>	Black cottonwood	16	Good or Excellent	Significant
Native	<i>Quercus agrifolia</i>	Coast live oak	3	Good or Excellent	N/A
Native	<i>Quercus agrifolia</i>	Coast live oak	4	Good or Excellent	N/A
Native	<i>Quercus agrifolia</i>	Coast live oak	4	Fair or Marginal	N/A
Native	<i>Quercus agrifolia</i>	Coast live oak	4.5	Good or Excellent	N/A
Native	<i>Quercus agrifolia</i>	Coast live oak	5	Good or Excellent	N/A
Native	<i>Quercus agrifolia</i>	Coast live oak	5	Good or Excellent	N/A
Native	<i>Quercus agrifolia</i>	Coast live oak	6	Fair or Marginal	N/A
Native	<i>Quercus agrifolia</i>	Coast live oak	6	Good or Excellent	N/A
Native	<i>Quercus agrifolia</i>	Coast live oak	6	Fair or Marginal	N/A
Native	<i>Quercus agrifolia</i>	Coast live oak	6.5	Fair or Marginal	N/A
Native	<i>Quercus agrifolia</i>	Coast live oak	7	Good or Excellent	N/A
Native	<i>Quercus agrifolia</i>	Coast live oak	7	Fair or Marginal	N/A
Native	<i>Quercus agrifolia</i>	Coast live oak	7	Good or Excellent	N/A
Native	<i>Quercus agrifolia</i>	Coast live oak	7	Fair or Marginal	N/A
Native	<i>Quercus agrifolia</i>	Coast live oak	8	Good or Excellent	N/A
Native	<i>Quercus agrifolia</i>	Coast live oak	8.5	Fair or Marginal	Protected
Native	<i>Quercus agrifolia</i>	Coast live oak	9	Good or Excellent	Protected

## APPENDIX B

Native	Latin Name	Common Name	DBH <sup>a</sup>	Tree Health Condition	Designation
Native	<i>Quercus agrifolia</i>	Coast live oak	9	Good or Excellent	Protected
Native	<i>Quercus agrifolia</i>	Coast live oak	9	Good or Excellent	Protected
Native	<i>Quercus agrifolia</i>	Coast live oak	9	Fair or Marginal	Protected
Native	<i>Quercus agrifolia</i>	Coast live oak	9.5	Good or Excellent	Protected
Native	<i>Quercus agrifolia</i>	Coast live oak	10	Good or Excellent	Protected
Native	<i>Quercus agrifolia</i>	Coast live oak	10	Fair or Marginal	Protected
Native	<i>Quercus agrifolia</i>	Coast live oak	10	Fair or Marginal	Protected
Native	<i>Quercus agrifolia</i>	Coast live oak	11	Fair or Marginal	Protected
Native	<i>Quercus agrifolia</i>	Coast live oak	11	Fair or Marginal	Protected
Native	<i>Quercus agrifolia</i>	Coast live oak	11	Fair or Marginal	Protected
Native	<i>Quercus agrifolia</i>	Coast live oak	11	Good or Excellent	Protected
Native	<i>Quercus agrifolia</i>	Coast live oak	11	Fair or Marginal	Protected
Native	<i>Quercus agrifolia</i>	Coast live oak	12	Fair or Marginal	Protected
Native	<i>Quercus agrifolia</i>	Coast live oak	12.5	Good or Excellent	Significant
Native	<i>Quercus agrifolia</i>	Coast live oak	13	Good or Excellent	Significant
Native	<i>Quercus agrifolia</i>	Coast live oak	14.5	Good or Excellent	Significant
Native	<i>Quercus agrifolia</i>	Coast live oak	14.5	Good or Excellent	Significant
Native	<i>Quercus agrifolia</i>	Coast live oak	15	Fair or Marginal	Significant
Native	<i>Quercus agrifolia</i>	Coast live oak	15	Good or Excellent	Significant
Native	<i>Quercus agrifolia</i>	Coast live oak	15	Good or Excellent	Significant
Native	<i>Quercus agrifolia</i>	Coast live oak	15.5	Good or Excellent	Significant

## APPENDIX B

Native	Latin Name	Common Name	DBH <sup>a</sup>	Tree Health Condition	Designation
Native	<i>Quercus agrifolia</i>	Coast live oak	16	Good or Excellent	Significant
Native	<i>Quercus agrifolia</i>	Coast live oak	16	Fair or Marginal	Significant
Native	<i>Quercus agrifolia</i>	Coast live oak	17	Good or Excellent	Significant
Native	<i>Quercus agrifolia</i>	Coast live oak	23	Good or Excellent	Significant
Native	<i>Quercus agrifolia</i>	Coast live oak	25	Good or Excellent	Significant
Native	<i>Quercus agrifolia</i>	Coast live oak	26	Good or Excellent	Significant
Native	<i>Quercus agrifolia</i>	Coast live oak	27.5	Fair or Marginal	Significant
Native	<i>Quercus agrifolia</i>	Coast live oak	28	Good or Excellent	Significant
Native	<i>Quercus agrifolia</i>	Coast live oak	28	Fair or Marginal	Significant
Native	<i>Quercus agrifolia</i>	Coast live oak	34.5	Good or Excellent	Significant
Native	<i>Quercus garryana</i>	Oregon oak	8.5	Good or Excellent	Protected
Native	<i>Quercus garryana</i>	Oregon oak	14	Good or Excellent	Protected
Native	<i>Quercus lobata</i>	Valley oak	4	Good or Excellent	N/A
Native	<i>Quercus lobata</i>	Valley oak	4	Good or Excellent	N/A
Native	<i>Quercus lobata</i>	Valley oak	6	Fair or Marginal	N/A
Native	<i>Quercus lobata</i>	Valley oak	7	Good or Excellent	N/A
Native	<i>Quercus lobata</i>	Valley oak	7	Good or Excellent	N/A
Native	<i>Quercus lobata</i>	Valley oak	7.5	Good or Excellent	N/A
Native	<i>Quercus lobata</i>	Valley oak	8	Good or Excellent	N/A
Native	<i>Quercus lobata</i>	Valley oak	9	Good or Excellent	Protected
Native	<i>Quercus lobata</i>	Valley oak	10	Poor or Hazard Tree	Protected

## APPENDIX B

Native	Latin Name	Common Name	DBH <sup>a</sup>	Tree Health Condition	Designation
Native	<i>Quercus lobata</i>	Valley oak	10.5	Good or Excellent	Protected
Native	<i>Quercus lobata</i>	Valley oak	13	Good or Excellent	Significant
Native	<i>Quercus lobata</i>	Valley oak	13	Good or Excellent	Significant
Native	<i>Quercus lobata</i>	Valley oak	13	Good or Excellent	Significant
Native	<i>Quercus lobata</i>	Valley oak	14	Good or Excellent	Significant
Native	<i>Quercus lobata</i>	Valley oak	16.5	Good or Excellent	Significant
Native	<i>Quercus lobata</i>	Valley oak	17	Good or Excellent	Significant
Native	<i>Quercus lobata</i>	Valley oak	17.5	Fair or Marginal	Significant
Native	<i>Quercus lobata</i>	Valley oak	19.5	Good or Excellent	Significant
Native	<i>Umbellularia californica</i>	California bay	4.5	Fair or Marginal	N/A
Native	<i>Umbellularia californica</i>	California bay	12.5	Fair or Marginal	N/A
Native	<i>Umbellularia californica</i>	California bay	27	Good or Excellent	Significant
Non-Native	<i>Acacia mearnsii</i>	Black wattle	4	Good or Excellent	N/A
Non-Native	<i>Acacia mearnsii</i>	Black wattle	4.5	Good or Excellent	N/A
Non-Native	<i>Acacia mearnsii</i>	Black wattle	10.5	Good or Excellent	Protected
Non-Native	<i>Acacia mearnsii</i>	Black wattle	34	Good or Excellent	Significant
Non-Native	<i>Acacia melanoxylon</i>	Blackwood acacia	12.5	Good or Excellent	Significant
Non-Native	<i>Acacia melanoxylon</i>	Blackwood acacia	20	Good or Excellent	Significant
Non-Native	<i>Acer palmatum</i>	Japanese maple	3	Good or Excellent	N/A
Non-Native	<i>Acer palmatum</i>	Japanese maple	3	Fair or Marginal	N/A
Non-Native	<i>Acer palmatum</i>	Japanese maple	4	Fair or Marginal	N/A

## APPENDIX B

Native	Latin Name	Common Name	DBH <sup>a</sup>	Tree Health Condition	Designation
Non-Native	<i>Acer palmatum</i>	Japanese maple	4.5	Fair or Marginal	N/A
Non-Native	<i>Acer palmatum</i>	Japanese maple	11	Good or Excellent	N/A
Non-Native	<i>Acer platanoides</i>	Norway maple	5	Good or Excellent	N/A
Non-Native	<i>Arbutus unedo</i>	Strawberry tree	5	Good or Excellent	N/A
Non-Native	<i>Arbutus unedo</i>	Strawberry tree	7.5	Fair or Marginal	N/A
Non-Native	<i>Ligustrum lucidum</i>	Glossy privet	4	Good or Excellent	N/A
Non-Native	<i>Ligustrum lucidum</i>	Glossy privet	5.5	Good or Excellent	N/A
Non-Native	<i>Ligustrum lucidum</i>	Glossy privet	9	Good or Excellent	Protected
Non-Native	<i>Ligustrum lucidum</i>	Glossy privet	10	Good or Excellent	Protected
Non-Native	<i>Ligustrum lucidum</i>	Glossy privet	12	Good or Excellent	Protected
Non-Native	<i>Ligustrum lucidum</i>	Glossy privet	13.5	Good or Excellent	Significant
Non-Native	<i>Ligustrum lucidum</i>	Glossy privet	19	Good or Excellent	Significant
Non-Native	<i>Magnolia grandiflora</i>	Southern magnolia	6	Good or Excellent	N/A
Non-Native	<i>Magnolia grandiflora</i>	Southern magnolia	7	Good or Excellent	N/A
Non-Native	<i>Magnolia grandiflora</i>	Southern magnolia	7	Good or Excellent	N/A
Non-Native	<i>Photinia serratifolia</i>	Taiwanese photinia	7	Fair or Marginal	N/A
Non-Native	<i>Photinia serratifolia</i>	Taiwanese photinia	7.5	Fair or Marginal	N/A
Non-Native	<i>Photinia serratifolia</i>	Taiwanese photinia	7.5	Fair or Marginal	N/A
Non-Native	<i>Photinia serratifolia</i>	Taiwanese photinia	9	Fair or Marginal	Protected
Non-Native	<i>Photinia serratifolia</i>	Taiwanese photinia	13	Fair or Marginal	Significant
Non-Native	<i>Pistacia chinensis</i>	Chinese pistachio	7	Good or Excellent	N/A



## APPENDIX B

Native	Latin Name	Common Name	DBH <sup>a</sup>	Tree Health Condition	Designation
Non-Native	<i>Pistacia chinensis</i>	Chinese pistachio	7.5	Good or Excellent	N/A
Non-Native	<i>Pistacia chinensis</i>	Chinese pistachio	8	Good or Excellent	N/A
Non-Native	<i>Pistacia chinensis</i>	Chinese pistachio	8	Good or Excellent	N/A
Non-Native	<i>Pistacia chinensis</i>	Chinese pistachio	8	Good or Excellent	N/A
Non-Native	<i>Pistacia chinensis</i>	Chinese pistachio	8.5	Good or Excellent	Protected
Non-Native	<i>Pistacia chinensis</i>	Chinese pistachio	8.5	Good or Excellent	Protected
Non-Native	<i>Pistacia chinensis</i>	Chinese pistachio	9	Good or Excellent	Protected
Non-Native	<i>Pistacia chinensis</i>	Chinese pistachio	9	Good or Excellent	Protected
Non-Native	<i>Pistacia chinensis</i>	Chinese pistachio	9.5	Good or Excellent	Protected
Non-Native	<i>Pistacia chinensis</i>	Chinese pistachio	9.5	Good or Excellent	Protected
Non-Native	<i>Pistacia chinensis</i>	Chinese pistachio	10	Good or Excellent	Protected
Non-Native	<i>Pistacia chinensis</i>	Chinese pistachio	12	Good or Excellent	Protected
Non-Native	<i>Pistacia chinensis</i>	Chinese pistachio	16	Good or Excellent	Significant
Non-Native	<i>Pistacia chinensis</i>	Chinese pistachio	17	Good or Excellent	Significant
Non-Native	<i>Prunus americana</i>	American plum	6	Fair or Marginal	N/A
Non-Native	<i>Prunus americana</i>	American plum	7	Fair or Marginal	N/A
Non-Native	<i>Prunus americana</i>	American plum	19.5	Good or Excellent	Significant
Non-Native	<i>Prunus cerasifera</i>	Cherry plum	6.5	Good or Excellent	N/A
Non-Native	<i>Prunus fremontii</i>	Apricot	6.5	Good or Excellent	N/A
Non-Native	<i>Ulmus minor</i>	English elm	6	Good or Excellent	N/A
Non-Native	<i>Ulmus minor</i>	English elm	10	Good or Excellent	Protected

## APPENDIX B

Native	Latin Name	Common Name	DBH <sup>a</sup>	Tree Health Condition	Designation
Non-Native	<i>Ulmus minor</i>	English elm	23	Good or Excellent	Significant
<b>Floodwall (Segment #3)</b>					
Native	<i>Aesculus californica</i>	Buckeye	11.5	Fair or Marginal	Protected
Native	<i>Aesculus californica</i>	Buckeye	16.5	Good or Excellent	Protected
Native	<i>Aesculus californica</i>	Buckeye	26	Fair or Marginal	Protected
Native	<i>Aesculus californica</i>	Buckeye	36.5	Fair or Marginal	Protected
Native	<i>Calocedrus decurrens</i>	Incense cedar	15	Good or Excellent	N/A
Native	<i>Calocedrus decurrens</i>	Incense cedar	16	Good or Excellent	N/A
Native	<i>Fraxinus latifolia</i>	Oregon ash	8	Fair or Marginal	N/A
Native	<i>Fraxinus latifolia</i>	Oregon ash	8.5	Fair or Marginal	N/A
Native	<i>Fraxinus latifolia</i>	Oregon ash	9	Good or Excellent	N/A
Native	<i>Fraxinus latifolia</i>	Oregon ash	32	Fair or Marginal	Protected
Native	<i>Hesperocyparis macrocarpa</i>	Monterey cypress	6	Good or Excellent	N/A
Native	<i>Hesperocyparis macrocarpa</i>	Monterey cypress	41	Fair or Marginal	N/A
Native	<i>Juglans hindsii</i>	Northern california black walnut	10.5	Fair or Marginal	N/A
Native	<i>Pinus radiata</i>	Monterey pine	31	Fair or Marginal	N/A
Native	<i>Quercus agrifolia</i>	Coast live oak	3	Good or Excellent	N/A
Native	<i>Quercus agrifolia</i>	Coast live oak	4	Good or Excellent	N/A
Native	<i>Quercus agrifolia</i>	Coast live oak	5	Good or Excellent	N/A
Native	<i>Quercus agrifolia</i>	Coast live oak	7	Good or Excellent	Protected
Native	<i>Quercus agrifolia</i>	Coast live oak	7.5	Good or Excellent	Protected

## APPENDIX B

Native	Latin Name	Common Name	DBH <sup>a</sup>	Tree Health Condition	Designation
Native	<i>Quercus agrifolia</i>	Coast live oak	8	Good or Excellent	Protected
Native	<i>Quercus agrifolia</i>	Coast live oak	8	Good or Excellent	Protected
Native	<i>Quercus agrifolia</i>	Coast live oak	10	Good or Excellent	Protected
Native	<i>Quercus agrifolia</i>	Coast live oak	12	Fair or Marginal	Protected
Native	<i>Quercus agrifolia</i>	Coast live oak	12	Good or Excellent	Protected
Native	<i>Quercus agrifolia</i>	Coast live oak	15	Good or Excellent	Protected
Native	<i>Quercus agrifolia</i>	Coast live oak	20.5	Fair or Marginal	Heritage
Native	<i>Quercus agrifolia</i>	Coast live oak	26.5	Good or Excellent	Protected
Native	<i>Quercus agrifolia</i>	Coast live oak	36	Good or Excellent	Heritage
Native	<i>Quercus lobata</i>	Valley oak	3.5	Good or Excellent	N/A
Native	<i>Quercus lobata</i>	Valley oak	7.5	Good or Excellent	Protected
Native	<i>Quercus lobata</i>	Valley oak	8.5	Good or Excellent	Protected
Native	<i>Quercus lobata</i>	Valley oak	10	Good or Excellent	Protected
Native	<i>Quercus lobata</i>	Valley oak	11	Good or Excellent	Protected
Native	<i>Quercus lobata</i>	Valley oak	12	Good or Excellent	Protected
Native	<i>Quercus lobata</i>	Valley oak	13	Good or Excellent	Protected
Native	<i>Quercus lobata</i>	Valley oak	15	Good or Excellent	Protected
Native	<i>Quercus lobata</i>	Valley oak	19	Good or Excellent	Protected
Native	<i>Quercus lobata</i>	Valley oak	23.5	Good or Excellent	Heritage
Native	<i>Umbellularia californica</i>	California bay	7.5	Good or Excellent	N/A
Native	<i>Umbellularia californica</i>	California bay	17	Fair or Marginal	Protected

## APPENDIX B

Native	Latin Name	Common Name	DBH <sup>a</sup>	Tree Health Condition	Designation
Native	<i>Umbellularia californica</i>	California bay	48	Good or Excellent	Protected
Non-Native	<i>Acacia mearnsii</i>	Black wattle	11	Fair or Marginal	N/A
Non-Native	<i>Acacia mearnsii</i>	Black wattle	12	Fair or Marginal	N/A
Non-Native	<i>Acacia mearnsii</i>	Black wattle	15	Good or Excellent	N/A
Non-Native	<i>Araucaria araucana</i>	Monkey puzzle tree	21	Good or Excellent	N/A
Non-Native	<i>Arbutus unedo</i>	Strawberry tree	9.5	Fair or Marginal	N/A
Non-Native	<i>Arbutus unedo</i>	Strawberry tree	12	Fair or Marginal	N/A
Non-Native	<i>Arbutus unedo</i>	Strawberry tree	16.5	Fair or Marginal	N/A
Non-Native	<i>Arbutus unedo</i>	Strawberry tree	17	Good or Excellent	N/A
Non-Native	<i>Arbutus unedo</i>	Strawberry tree	17.5	Fair or Marginal	N/A
Non-Native	<i>Arbutus unedo</i>	Strawberry tree	20	Fair or Marginal	N/A
Non-Native	<i>Ligustrum lucidum</i>	Glossy privet	4	Good or Excellent	N/A
Non-Native	<i>Ligustrum lucidum</i>	Glossy privet	5	Good or Excellent	N/A
Non-Native	<i>Ligustrum lucidum</i>	Glossy privet	10.5	Good or Excellent	N/A
Non-Native	<i>Ligustrum lucidum</i>	Glossy privet	11.5	Good or Excellent	N/A
Non-Native	<i>Ligustrum lucidum</i>	Glossy privet	12.5	Good or Excellent	N/A
Non-Native	<i>Ligustrum lucidum</i>	Glossy privet	16	Fair or Marginal	N/A
Non-Native	<i>Ligustrum lucidum</i>	Glossy privet	16.5	Good or Excellent	N/A
Non-Native	<i>Ligustrum lucidum</i>	Glossy privet	24	Fair or Marginal	N/A
Non-Native	<i>Malus pumila</i>	Paradise apple	4	Fair or Marginal	N/A
Non-Native	<i>Olea europaea</i>	Olive	10.5	Fair or Marginal	N/A

## APPENDIX B

Native	Latin Name	Common Name	DBH <sup>a</sup>	Tree Health Condition	Designation
Non-Native	<i>Olea europaea</i>	Olive	15	Fair or Marginal	N/A
Non-Native	<i>Phoenix canariensis</i>	Canary island date palm	19	Good or Excellent	N/A
Non-Native	<i>Phoenix canariensis</i>	Canary island date palm	37	Good or Excellent	N/A
Non-Native	<i>Phoenix canariensis</i>	Canary island date palm	40	Fair or Marginal	N/A
Non-Native	<i>Phoenix canariensis</i>	Canary island date palm	50	Good or Excellent	N/A
Non-Native	<i>Prunus americana</i>	American plum	5	Good or Excellent	N/A
Non-Native	<i>Prunus americana</i>	American plum	9	Good or Excellent	N/A
Non-Native	<i>Prunus cerasifera</i>	Cherry plum	4	Fair or Marginal	N/A
Non-Native	<i>Prunus cerasifera</i>	Cherry plum	6	Fair or Marginal	N/A
Non-Native	<i>Prunus laurocerasus</i>	Cherry laurel	17	Good or Excellent	N/A
Non-Native	<i>Salix babylonica</i>	Weeping willow	25	Good or Excellent	N/A
Non-Native	<i>Schinus terebinthifolius</i>	Brazilian pepper tree	12	Good or Excellent	N/A
Non-Native	<i>Ulmus minor</i>	English elm	2	Good or Excellent	N/A
Non-Native	<i>Ulmus minor</i>	English elm	4	Fair or Marginal	N/A
Non-Native	<i>Ulmus minor</i>	English elm	5.5	Fair or Marginal	N/A
Non-Native	<i>Ulmus minor</i>	English elm	6	Poor or Hazard Tree	N/A
Non-Native	<i>Ulmus minor</i>	English elm	6.5	Fair or Marginal	N/A
Non-Native	<i>Ulmus minor</i>	English elm	7.5	Fair or Marginal	N/A
Non-Native	<i>Ulmus minor</i>	English elm	8	Good or Excellent	N/A
Non-Native	<i>Ulmus minor</i>	English elm	10	Fair or Marginal	N/A
Non-Native	<i>Ulmus minor</i>	English elm	12	Fair or Marginal	N/A

## APPENDIX B

Native	Latin Name	Common Name	DBH <sup>a</sup>	Tree Health Condition	Designation
Non-Native	<i>Ulmus minor</i>	English elm	12	Fair or Marginal	N/A
<b>Stormwater pump station</b>					
Native	<i>Quercus agrifolia</i>	Coast live oak	4	Good or Excellent	N/A
Native	<i>Quercus agrifolia</i>	Coast live oak	8	Fair or Marginal	Protected
Native	<i>Quercus agrifolia</i>	Coast live oak	8.5	Good or Excellent	Protected
Non-Native	<i>Acacia mearnsii</i>	Black wattle	17	Good or Excellent	N/A
Non-Native	<i>Ulmus minor</i>	English elm	7	Good or Excellent	N/A
Non-Native	<i>Ulmus minor</i>	English elm	15	Good or Excellent	N/A
Non-Native	<i>Ulmus minor</i>	English elm	17	Good or Excellent	N/A
Non-Native	<i>Ulmus parvifolia</i>	Siberian elm	20	Good or Excellent	N/A
<b>Floodwall (Segment #2)</b>					
Non-Native	<i>Ailanthus altissima</i>	Tree of heaven	12	Poor or Hazard Tree	N/A
Non-Native	<i>Pistacia chinensis</i>	Chinese pistachio	10	Good or Excellent	N/A
Non-Native	<i>Pistacia chinensis</i>	Chinese pistachio	13	Fair or Marginal	N/A
<b>Floodwall (Segment #1)</b>					
Native	<i>Pinus radiata</i>	Monterey pine	24	Fair or Marginal	N/A
Native	<i>Quercus agrifolia</i>	Coast live oak	4	Good or Excellent	N/A
Native	<i>Quercus agrifolia</i>	Coast live oak	4	Fair or Marginal	N/A
Native	<i>Quercus agrifolia</i>	Coast live oak	5	Good or Excellent	N/A
Native	<i>Quercus agrifolia</i>	Coast live oak	5	Good or Excellent	N/A
Native	<i>Quercus agrifolia</i>	Coast live oak	6	Fair or Marginal	Protected

## APPENDIX B

Native	Latin Name	Common Name	DBH <sup>a</sup>	Tree Health Condition	Designation
Native	<i>Quercus agrifolia</i>	Coast live oak	6	Good or Excellent	Protected
Native	<i>Quercus agrifolia</i>	Coast live oak	6	Good or Excellent	Protected
Native	<i>Quercus agrifolia</i>	Coast live oak	6	Fair or Marginal	Protected
Native	<i>Quercus agrifolia</i>	Coast live oak	7	Good or Excellent	Protected
Native	<i>Quercus agrifolia</i>	Coast live oak	7	Good or Excellent	Protected
Native	<i>Quercus agrifolia</i>	Coast live oak	7	Good or Excellent	Protected
Native	<i>Quercus agrifolia</i>	Coast live oak	8	Fair or Marginal	Protected
Native	<i>Quercus agrifolia</i>	Coast live oak	9	Good or Excellent	Protected
Native	<i>Quercus agrifolia</i>	Coast live oak	10	Good or Excellent	Protected
Native	<i>Quercus agrifolia</i>	Coast live oak	11	Good or Excellent	Protected
Native	<i>Quercus agrifolia</i>	Coast live oak	11.5	Fair or Marginal	Protected
Native	<i>Quercus agrifolia</i>	Coast live oak	20	Good or Excellent	Protected
Native	<i>Quercus agrifolia</i>	Coast live oak	20	Good or Excellent	Heritage
Native	<i>Quercus agrifolia</i>	Coast live oak	24.5	Poor or Hazard Tree	N/A
Native	<i>Quercus agrifolia</i>	Coast live oak	26	Good or Excellent	Heritage
Native	<i>Quercus agrifolia</i>	Coast live oak	27	Good or Excellent	Heritage
Native	<i>Quercus lobata</i>	Valley oak	13.5	Good or Excellent	Protected
Native	<i>Quercus lobata</i>	Valley oak	25.5	Good or Excellent	Heritage
Native	<i>Umbellularia californica</i>	California bay	8	Good or Excellent	N/A
Native	<i>Umbellularia californica</i>	California bay	22	Good or Excellent	Protected
Native	<i>Umbellularia californica</i>	California bay	28.5	Good or Excellent	Protected

## APPENDIX B

Native	Latin Name	Common Name	DBH <sup>a</sup>	Tree Health Condition	Designation
Non-Native	<i>Acacia mearnsii</i>	Black wattle	5	Fair or Marginal	N/A
Non-Native	<i>Acacia mearnsii</i>	Black wattle	9	Fair or Marginal	N/A
Non-Native	<i>Acacia mearnsii</i>	Black wattle	9	Good or Excellent	N/A
Non-Native	<i>Acacia mearnsii</i>	Black wattle	12	Good or Excellent	N/A
Non-Native	<i>Acacia mearnsii</i>	Black wattle	12	Good or Excellent	N/A
Non-Native	<i>Acacia mearnsii</i>	Black wattle	16	Good or Excellent	N/A
Non-Native	<i>Acacia mearnsii</i>	Black wattle	30	Good or Excellent	N/A
Non-Native	<i>Acacia mearnsii</i>	Black wattle	31	Good or Excellent	N/A
Non-Native	<i>Cinnamomum camphora</i>	Camphortree	5	Good or Excellent	N/A
Non-Native	<i>Eucalyptus camaldulensis</i>	Red gum	12.5	Good or Excellent	N/A
Non-Native	<i>Eucalyptus camaldulensis</i>	Red gum	13	Good or Excellent	N/A
Non-Native	<i>Eucalyptus camaldulensis</i>	Red gum	13.5	Good or Excellent	N/A
Non-Native	<i>Eucalyptus camaldulensis</i>	Red gum	17.5	Good or Excellent	N/A
Non-Native	<i>Eucalyptus camaldulensis</i>	Red gum	24	Good or Excellent	N/A
Non-Native	<i>Eucalyptus camaldulensis</i>	Red gum	25	Good or Excellent	N/A
Non-Native	<i>Eucalyptus camaldulensis</i>	Red gum	29	Good or Excellent	N/A
Non-Native	<i>Eucalyptus camaldulensis</i>	Red gum	48	Good or Excellent	N/A
Non-Native	<i>Ligustrum lucidum</i>	Glossy privet	4	Fair or Marginal	N/A
Non-Native	<i>Ligustrum lucidum</i>	Glossy privet	23	Good or Excellent	N/A
Non-Native	<i>Morus alba</i>	Mulberry	8.5	Good or Excellent	N/A
Non-Native	<i>Morus alba</i>	Mulberry	9	Good or Excellent	N/A



## APPENDIX B

Native	Latin Name	Common Name	DBH <sup>a</sup>	Tree Health Condition	Designation
Non-Native	<i>Morus alba</i>	Mulberry	13	Good or Excellent	N/A
Non-Native	<i>Myoporum laetum</i>	Ngaio tree	8.5	Poor or Hazard Tree	N/A
Non-Native	<i>Myoporum laetum</i>	Ngaio tree	17	Fair or Marginal	N/A
Non-Native	<i>Olea europaea</i>	Olive	7	Fair or Marginal	N/A
Non-Native	<i>Olea europaea</i>	Olive	37.5	Good or Excellent	N/A
Non-Native	<i>Platanus occidentalis</i>	American sycamore	10.5	Good or Excellent	N/A
Non-Native	<i>Pyrus calleryana</i>	Callery pear	6	Fair or Marginal	N/A
Non-Native	<i>Pyrus calleryana</i>	Callery pear	8	Fair or Marginal	N/A
Non-Native	<i>Pyrus calleryana</i>	Callery pear	10	Fair or Marginal	N/A
Non-Native	<i>Pyrus calleryana</i>	Callery pear	11	Good or Excellent	N/A
Non-Native	<i>Salix babylonica</i>	Weeping willow	26	Good or Excellent	N/A
Non-Native	<i>Schinus molle</i>	Peruvian pepper tree	9	Fair or Marginal	N/A
Non-Native	<i>Schinus molle</i>	Peruvian pepper tree	10.5	Good or Excellent	N/A
Non-Native	<i>Schinus molle</i>	Peruvian pepper tree	11.5	Fair or Marginal	N/A
Non-Native	<i>Schinus molle</i>	Peruvian pepper tree	11.5	Fair or Marginal	N/A
Non-Native	<i>Ulmus minor</i>	English elm	4.5	Fair or Marginal	N/A
Non-Native	<i>Ulmus minor</i>	English elm	5	Good or Excellent	N/A
Non-Native	<i>Ulmus minor</i>	English elm	5.5	Good or Excellent	N/A
Non-Native	<i>Ulmus minor</i>	English elm	6	Good or Excellent	N/A
Non-Native	<i>Ulmus minor</i>	English elm	10.5	Good or Excellent	N/A
Non-Native	<i>Ulmus minor</i>	English elm	12	Good or Excellent	N/A



## APPENDIX B

Native	Latin Name	Common Name	DBH <sup>a</sup>	Tree Health Condition	Designation
Non-Native	<i>Acacia spp.</i>	Acacia	8	--	N/A
Non-Native	<i>Acacia spp.</i>	Acacia	10	--	N/A
Non-Native	<i>Acacia spp.</i>	Acacia	10	--	N/A
Non-Native	<i>Acacia spp.</i>	Acacia	10	--	N/A
Non-Native	<i>Acacia spp.</i>	Acacia	12	--	N/A
Non-Native	<i>Acacia spp.</i>	Acacia	12	--	N/A
Non-Native	<i>Acacia spp.</i>	Acacia	12	--	N/A
Non-Native	<i>Acacia spp.</i>	Acacia	18	--	N/A
Non-Native	<i>Arecaceae spp.</i>	Palm	--	--	N/A
Non-Native	<i>Arecaceae spp.</i>	Palm	--	--	N/A
Non-Native	<i>Arecaceae spp.</i>	Palm	--	--	N/A
Non-Native	<i>Eucalyptus spp.</i>	Eucalyptus	10	--	N/A
Non-Native	<i>Eucalyptus spp.</i>	Eucalyptus	8	--	N/A
Non-Native	<i>Eucalyptus spp.</i>	Eucalyptus	12	--	N/A
Non-Native	<i>Eucalyptus spp.</i>	Eucalyptus	20	--	N/A
Non-Native	<i>Ligustrum spp.</i>	Privet	8	--	N/A
Non-Native	<i>Ligustrum spp.</i>	Privet	8	--	N/A
Non-Native	<i>Ligustrum spp.</i>	Privet	8	--	N/A
Non-Native	<i>Prunus spp.</i>	Prunus	6	--	N/A
Non-Native	<i>Prunus spp.</i>	Prunus	6	--	N/A
Non-Native	<i>Prunus spp.</i>	Prunus	12	--	N/A

## APPENDIX B

Native	Latin Name	Common Name	DBH <sup>a</sup>	Tree Health Condition	Designation
--------	------------	-------------	------------------	-----------------------	-------------

**Notes:**

If the United States Army Corps of Engineers (USACE) requires a 15-foot setback from the existing channel, 184 fewer trees would need to be removed including 18 trees from Unit 4, 71 trees from Frederick Allen Park, 88 trees from the floodwalls, 6 trees from the stormwater pump station, and 1 tree from the Lower College of Marin concrete channel removal.

- <sup>a</sup> For trees with multiple branches at breast height, the diameter at breast height (DBH) data for sums the branches.
- <sup>b</sup> The Lower College of Marin concrete channel tree survey was conducted for trees with 6" DBH or greater. The genus of each tree was noted, but the specific tree species was not determined. The health of each tree was not determined.
- <sup>c</sup> The specific species and single branch DBH are unknown for this tree. Designation is given to conservatively estimate removal tree replacement ratio based on definition for other protected or heritage oak species.

**Tree health descriptions:**

A tree in "good or excellent condition" – little or no existing disease or damage in canopy or roots

A tree in "fair or marginal condition" – minor existing disease or damage in canopy or roots

A tree in "poor condition or creating a hazard" to a building and/or structure – major existing disease or damage in canopy or roots

**Designation:**

Tree designation is identified based on definitions provided in Town of Ross Municipal Code Section 12.21.020 Definitions and Marin County Municipal Code Section 22.130.030 Definitions of Specialized Terms and Phrases.

Town of Ross Municipal Code definitions for "protected tree" and "significant tree" are used to designate trees located within Town of Ross, including trees located within Fish Ladder Removal and Unit 4 Grading and Frederick Allen Park.

Marin County Municipal Code definitions for "protected tree" and "heritage tree" are used to designate trees located outside Town of Ross, including trees located in Floodwalls (segments #1, #2, and #3), Stormwater Pump Station, and Lower College of Marin Concrete Channel Removal areas.

"N/A" designation indicates a tree does not meet the definitions of "significant tree", "protected tree", or "heritage tree" as defined in Town of Ross and Marin County Municipal Codes.

---

*Sources: (Marin County, 2020; Town of Ross, 2020).*

## APPENDIX B

### References

Marin County. (2020, November 16). Marin County Municipal Code. Retrieved from [https://library.municode.com/ca/marin\\_county/codes/municipal\\_code](https://library.municode.com/ca/marin_county/codes/municipal_code)

Town of Ross. (2020). *Municipal Code*. Retrieved July 29, 2020, from <https://www.townofross.org/administration/page/municipal-code>

## Appendix B

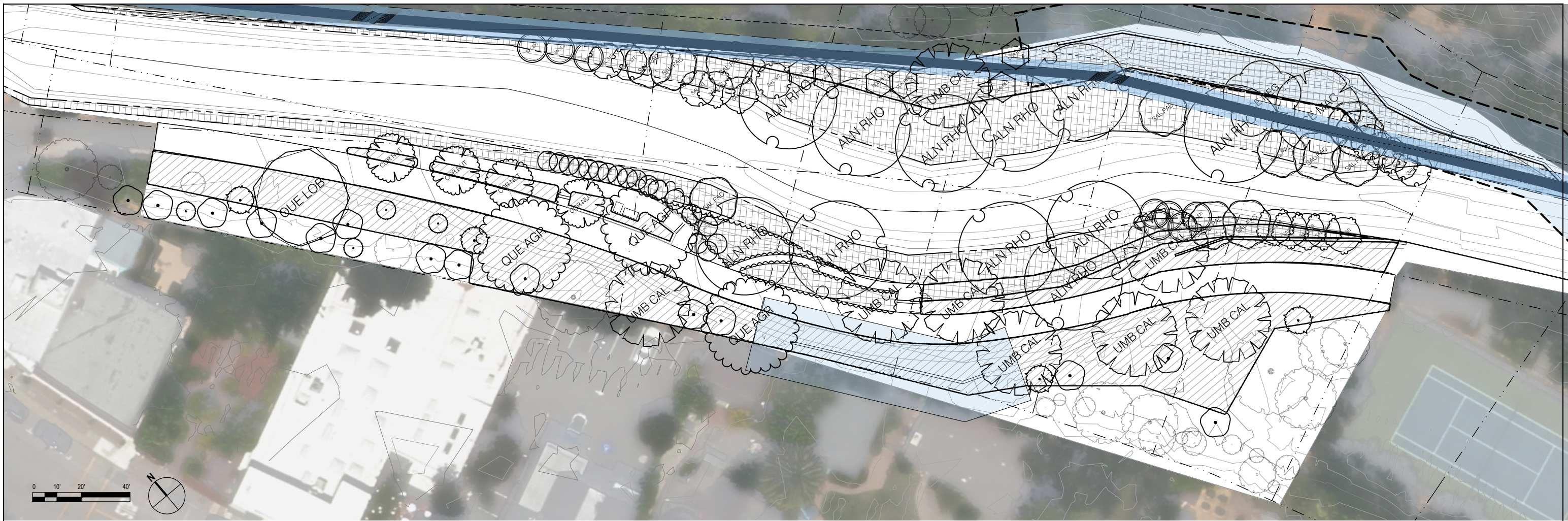
---

### **Tree Removal Table and Landscaping Planting Plans**

Tree Removal Table

**Frederick Allen Park Planting Plans**

Lower Corte Madera Creek Planting Plan



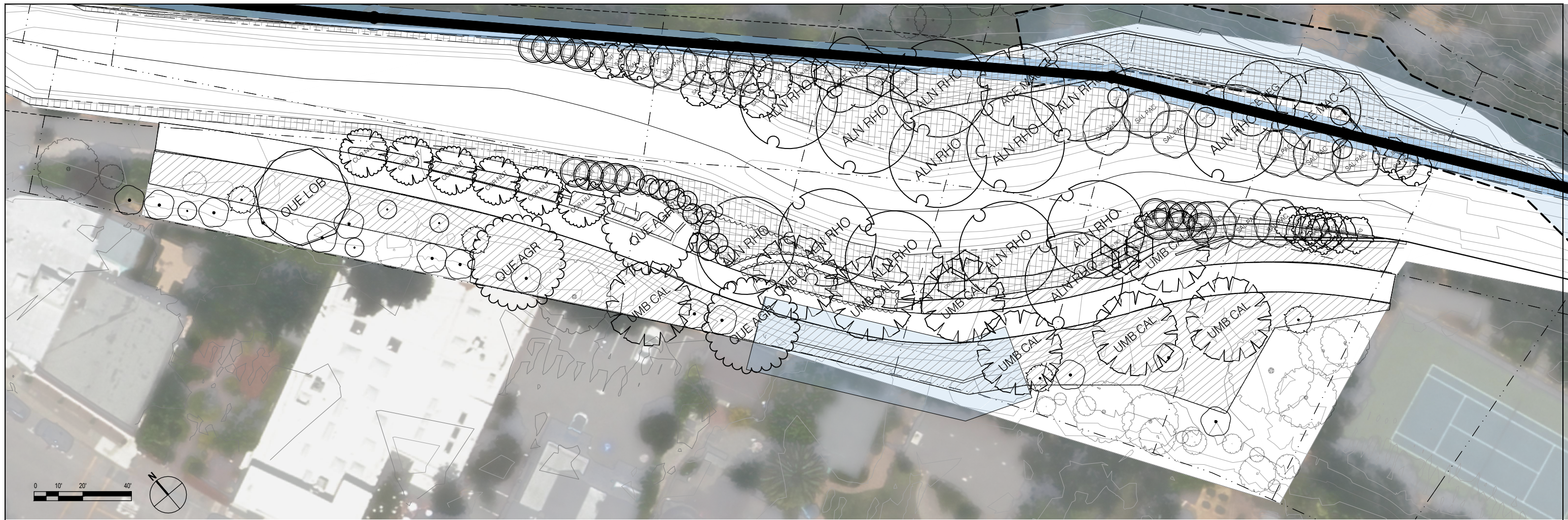
**PLANTING PLAN**

TREES	CODE	BOTANICAL NAME	COMMON NAME	SIZE	WUCOLS	QTY	SHRUBS	CODE	BOTANICAL NAME	COMMON NAME	SIZE	QTY	FLOODPLAIN UNDERSTORY		QTY			
	EXI 5E5	Existing Tree		---		27		CEA TH2	Ceanothus thyrsiflorus	Blue Blossom	15 GAL	4		CAR DE2	Carex densa	Dense Sedge	PLUGS	445
	ACE MAC	Acer macrophyllum	Big Leaf Maple	15 GAL	M	1		HET ARB	Heteromeles arbutifolia	Toyon	15 GAL	14		CAR NU2	Carex nudata	California Black-flowering Sedge	PLUGS	149
	ACE NEG	Acer negundo	Box Elder	15 GAL	M	1		SAM CA2	Sambucus nigra caerulea	Blue Elderberry	5 GAL	4		CYP ER2	Cyperus eragrostis	Tall Umbrella Sedge	PLUGS	149
	ALN RHO	Alnus rhombifolia	White Alder	15 GAL	M	11		<b>UPPER RIGHT BANK SHRUBS</b>						FES RE3	Festuca rubra	Red Fescue	PLUGS	445
	COR NUT	Cornus nuttallii	Western Flowering Dogwood	8" TRUNK HT SINGLE TRUNK	M	4		BER AQ3	Berberis aquifolium	Oregon Grape	#5	12,561 sf		HOR BR2	Hordeum brachyantherum	Meadow Barley	PLUGS	149
	COR RES	Cornus sericea	Red Twig Dogwood	5 GAL		6		BER BAT	Berberis pinnata	Coast Barberry	#5	8		LUP RV	Lupinus rivularis	Riverbank Lupine	#1	60
	PHY CAP	Physocarpus capitatus	Pacific Ninebark	5 GAL		18		DAN CA2	Danthonia californica	California Oatgrass	PLUGS	1,306		PET PAL	Petasites frigidus palmatus	Arctic Sweet Colts Foot	#1	23
	QUE AGR	Quercus agrifolia	Coast Live Oak	36" BOX	VL	3		DIP AUR	Diplacis aurantiacus	Sticky Monkeyflower	#1	73		ROS GY2	Rosa gymnocarpa	Dwarf Rose	#1	24
	QUE LOB	Quercus lobata	Valley Oak	24" BOX	L	1		FES RE4	Festuca rubra	Red Fescue	PLUGS	1,306		RUB UR2	Rubus ursinus	Nootka Rose	#1	19
	SAL EXI	Salix exigua	Coyote Willow	STAKES		8		FRA CA3	Frangula californica	California Buckthorn	#5	27		STA AJU	Stachys ajugoides	Bugle Hedge-nettle	PLUGS	66
	SAL PAC	Salix lasiandra	Pacific Willow	1 GAL		12		MON VIL	Monarda villosa	Coyote Mint	#1	10,444		VIT CA2	Vitis californica	California Wild Grape	#1	6
	SAL LAS	Salix lasiolepis	Arroyo Willow	STAKES		7		RIB CH2	Ribes malvaceum	Chaparral Currant	#5	16		<b>UPPER RIPARIAN SHRUBS</b>				6,176 sf
	SAL SIT	Salix sitchensis	Sitka Willow	STAKES		9		RIB SA2	Ribes sanguineum	Red Flowering Currant	#5	11		BER AQ2	Berberis aquifolium	Oregon Grape	#5	18
	UMB CAL	Umbellularia californica	Bay Laurel	8" TRUNK HT	M	8		RIB SPE	Ribes speciosum	Fuchsia Flowering Gooseberry	#5	19		CAL OC2	Calycanthus occidentalis	Spice Bush	#5	16
								SAL SON	Salvia sonomensis	Creeping Sage	#1	54		PHY CA3	Physocarpus capitatus	Pacific Ninebark	#5	6
														ROS CA2	Rosa californica	California Wild Rose	#1	21
														ROS NUT	Rosa nutkana	Nootka Rose	#1	9

**PLANT SCHEDULE**

**PRELIMINARY**

								Drawn <b>JH</b> Designer <b>JH</b>	Project <b>XXX</b> <b>CORTE MADERA CREEK FISH PASSAGE</b> <b>ALLEN PARK</b> <b>PRELIMINARY PLANTING PLAN - REDUCED</b>
Reuse of Documents This document and the ideas and designs incorporated herein, as an instrument of professional service, is the property of GHD and shall not be reused in whole or in part for any other project without GHD's written authorization. © 2020 GHD				GHD Inc. 4080 Plaza Goldorado Circle Suite B Cameron Park California 95682 USA T 1 530 677 5515 W www.ghd.com		Project Manager <b>R.WONG</b> Date <b>09/08/2020</b>		Project No. <b>11211523</b> Original Size <b>ANSI D</b> Sheet No. <b>L-100</b>	
No.	Issue	Drawn	Approved	Date	This document shall not be used for construction unless signed and sealed for construction.		Scale <b>AS SHOWN</b>	Sheet <b>5</b> of <b>XX</b>	



**PLANTING PLAN**

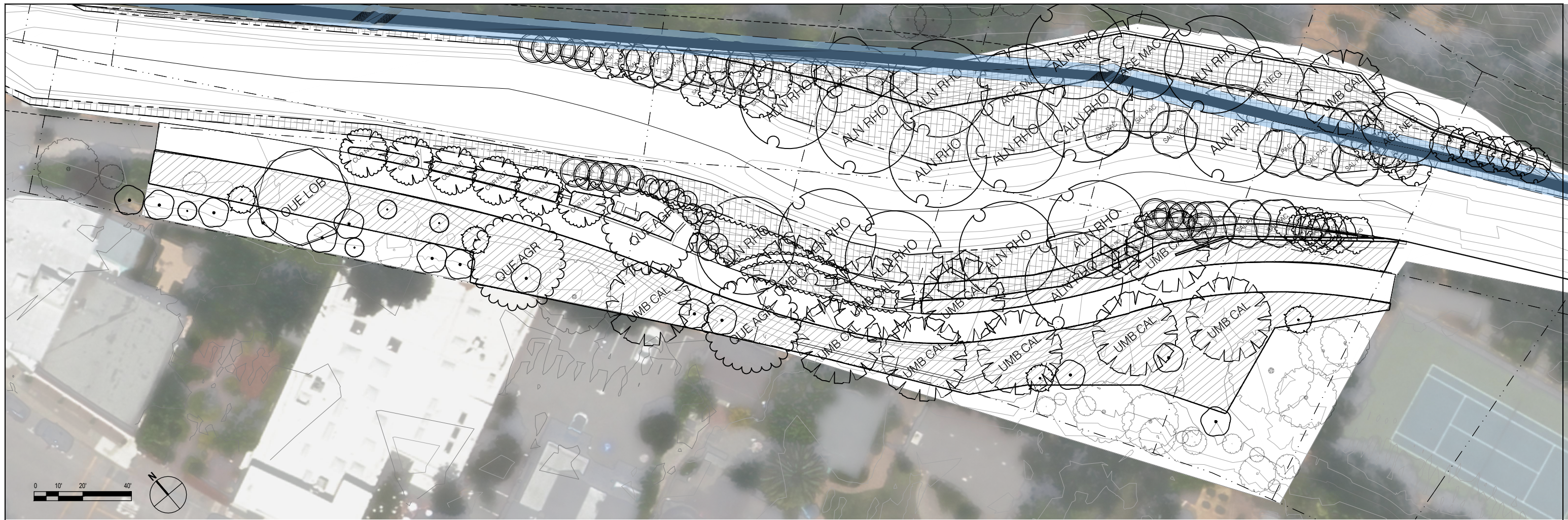
TREES	CODE	BOTANICAL NAME	COMMON NAME	SIZE	WUCOLS	QTY	SHRUBS	CODE	BOTANICAL NAME	COMMON NAME	SIZE	QTY						
	EXI 5E5	Existing Tree		—		27		CEA TH2	Ceanothus thyrsiflorus	Blue Blossom	15 GAL	4						
	ACE MAC	Acer macrophyllum	Big Leaf Maple	15 GAL	M	2		HET ARB	Heteromeles arbutifolia	Toyon	15 GAL	14						
	ACE NEG	Acer negundo	Box Elder	15 GAL	M	2		SAM CA2	Sambucus nigra caerulea	Blue Elderberry	5 GAL	4						
	ALN RHO	Alnus rhombifolia	White Alder	15 GAL	M	13												
	COR NUT	Cornus nuttallii	Western Flowering Dogwood	8' TRUNK HT SINGLE TRUNK	M	6												
	COR RES	Cornus sericea	Red Twig Dogwood	5 GAL		10												
	PHY CAP	Physocarpus capitatus	Pacific Ninebark	5 GAL		16												
	QUE AGR	Quercus agrifolia	Coast Live Oak	36" BOX	VL	3												
	QUE LOB	Quercus lobata	Valley Oak	24" BOX	L	1												
	SAL EXI	Salix exigua	Coyote Willow	STAKES		17												
	SAL PAC	Salix lasiandra	Pacific Willow	1 GAL		14												
	SAL LAS	Salix lasiolepis	Arroyo Willow	STAKES		11												
	SAL SIT	Salix sitchensis	Sitka Willow	STAKES		9												
	UMB CAL	Umbellularia californica	Bay Laurel	8' TRUNK HT	M	8												
													FLOODPLAIN UNDERSTORY				11,416 sf	
													CAR DE2		Carex densa	Dense Sedge	PLUGS	445
													CAR NU2		Carex nudata	California Black-flowering Sedge	PLUGS	149
													CLI DO2		Clinopodium douglasii	Yerba Buena	PLUGS	89
													CYP ER2		Cyperus eragrostis	Tall Umbrella Sedge	PLUGS	149
													DES EL2		Deschampsia elongata	Slender Hairgrass	PLUGS	89
													ERY GU2		Erythranthe guttata	Yellow Monkeyflower	#1	742
													FES RE3		Festuca rubra	Red Fescue	PLUGS	149
													HOR BR2		Hordeum brachyantherum	Meadow Barley	PLUGS	60
													LUP RV1		Lupinus rivularis	Riverbank Lupine	#1	53
													OEN HOE		Oenothera elata hookeri	California Evening Primrose	PLUGS	23
													PET PAL		Petasites frigidus palmatus	Arctic Sweet Colts Foot	—	475
													PRU VU4		Prunella vulgaris	Soft-Heal	PLUGS	24
													ROS GY2		Rosa gymnocarpa	Dwarf Rose	#1	19
													ROS NU2		Rosa nutkana	Nootka Rose	#1	19
													RUB UR2		Rubus ursinus	California Blackberry	#1	66
													STA AJU		Stachys ajugoides	Bugle Hedge-nettle	#1	6
													VIT CA2		Vitis californica	California Wild Grape	#1	
													UPPER RIPARIAN SHRUBS				6,176 sf	
													BER AQ2		Berberis aquifolium	Oregon Grape	#5	36
													CAL OC2		Calycanthus occidentalis	Spice Bush	#5	26
													PHY CA3		Physocarpus capitatus	Pacific Ninebark	#5	31
													ROS CA2		Rosa californica	California Wild Rose	#1	41
													ROS NUT		Rosa nutkana	Nootka Rose	#1	27

**PLANT SCHEDULE**

**PRELIMINARY**

<p>Bar is one inch on original size sheet</p> <p>0 1"</p> <p>Reuse of Documents This document and the ideas and designs incorporated herein, as an instrument of professional service, is the property of GHD and shall not be reused in whole or in part for any other project without GHD's written authorization. © 2020 GHD</p>					<p>GHD Inc. 4080 Plaza Goldorado Circle Suite B Cameron Park California 95682 USA T 1 530 677 5515 W www.ghd.com</p>		<p>Michael Love &amp; Associates Hydrologic Solutions PO Box 4477 • Arcata, CA 95558 • (707) 822-2411</p>		<p>Drawn JH</p> <p>Drafting Check</p> <p>Project Manager R.WONG</p>	<p>Designer JH</p> <p>Design Check</p> <p>Date 09/08/2020</p> <p>Scale AS SHOWN</p>	<p>Client <b>XXX</b></p> <p>Project <b>CORTE MADERA CREEK FISH PASSAGE</b></p> <p>Title <b>ALLEN PARK</b></p> <p><b>PRELIMINARY PLANTING PLAN W/FLOODWALL SETBACKS</b></p> <p>Project No. <b>11211523</b></p> <p>Original Size <b>ANSI D</b></p> <p>Sheet No. <b>L-100</b></p>	<p>Sheet 5 of <b>XX</b></p>
No.	Issue	Drawn	Approved	Date								





**PLANTING PLAN**

TREES							SHRUBS							FLOODPLAIN UNDERSTORY							UPPER RIPARIAN SHRUBS						
CODE	BOTANICAL NAME	COMMON NAME	SIZE	WUCOLS	QTY	CODE	BOTANICAL NAME	COMMON NAME	SIZE	QTY	CODE	BOTANICAL NAME	COMMON NAME	SIZE	QTY	CODE	BOTANICAL NAME	COMMON NAME	SIZE	QTY							
EXI 5E5	Existing Tree		---		27	CEA TH2	Ceanothus thyrsiflorus	Blue Blossom	15 GAL	4	BER AQ3	Berberis aquifolium	Oregon Grape	#5	12,561 sf	BER AQ2	Berberis aquifolium	Oregon Grape	#5	18	CAR DE2	Carex densa	Dense Sedge	PLUGS	445		
ACE MAC	Acer macrophyllum	Big Leaf Maple	15 GAL	M	2	HET ARB	Heteromeles arbutifolia	Toyon	15 GAL	14	BER BAT	Berberis pinnata	Coast Barberry	#5	8	CAR NU2	Carex nudata	California Black-flowering Sedge	PLUGS	149	CYP ER2	Cyperus eragrostis	Tall Umbrella Sedge	PLUGS	149		
ACE NEG	Acer negundo	Box Elder	15 GAL	M	3	SAM CA2	Sambucus nigra caerulea	Blue Elderberry	5 GAL	4	BER PN3	Berberis pinnata pinnata	California Barberr	#5	3,768 sf	FES RE3	Festuca rubra	Red Fescue	PLUGS	445	HOR BR2	Hordeum brachyantherum	Meadow Barley	PLUGS	149		
ALN RHO	Alnus rhombifolia	White Alder	15 GAL	M	15	DAN CA2	Danthonia californica	California Oatgrass	PLUGS	1,306	FES RE4	Festuca rubra	Red Fescue	PLUGS	1,306	LUP RV	Lupinus rivularis	Riverbank Lupine	#1	60	PET PAL	Petasites frigidus palmatus	Arctic Sweet Colts Foot	#1	23		
COR NUT	Cornus nuttallii	Western Flowering Dogwood	8" TRUNK HT SINGLE TRUNK	M	6	DIP AJR	Diplacis aurantiacus	Sticky Monkeyflower	#1	73	FRA CA3	Frangula californica	California Buckthorn	#5	27	ROS GY2	Rosa gymnocarpa	Dwarf Rose	#1	24	ROS NU2	Rosa nutkana	Nootka Rose	#1	19		
COR RE5	Cornus sericea	Red Twig Dogwood	5 GAL		10	FES RE4	Festuca rubra	Red Fescue	PLUGS	1,306	MON VIL	Monarda villosa	Coyote Mint	PLUGS	10,444	RUB UR2	Rubus ursinus	California Blackberry	#1	19	STA AJU	Stachys ajugoides	Bugle Hedge-nettle	#1	66		
PHY CAP	Physocarpus capitatus	Pacific Ninebark	5 GAL		12	RIB CH2	Ribes malvaceum	Chaparral Currant	#5	16	RUB UR2	Rubus ursinus	California Blackberry	#1	19	VIT CA2	Vitis californica	California Wild Grape	#1	6							
QUE AGR	Quercus agrifolia	Coast Live Oak	36" BOX	VL	3	RIB SA2	Ribes sanguineum	Red Flowering Currant	#5	11																	
QUE LOB	Quercus lobata	Valley Oak	24" BOX	L	1	RIB SPE	Ribes speciosum	Fuchsia Flowering Gooseberry	#5	19																	
SAL EXI	Salix exigua	Coyote Willow	STAKES		17	SAL SON	Salvia sonomensis	Creeping Sage	#1	54																	
SAL PAC	Salix lasiandra	Pacific Willow	1 GAL		16																						
SAL LAS	Salix lasiolepis	Arroyo Willow	STAKES		11																						
SAL SIT	Salix sitchensis	Sitka Willow	STAKES		18																						
UMB CAL	Umbellularia californica	Bay Laurel	8" TRUNK HT	M	11																						

**PLANT SCHEDULE**

**PRELIMINARY**

<p>Bar is one inch on original size sheet</p> <p>0 1"</p>				<p>Reuse of Documents</p> <p>This document and the ideas and designs incorporated herein, as an instrument of professional service, is the property of GHD and shall not be reused in whole or in part for any other project without GHD's written authorization. © 2020 GHD</p>		<p>GHD Inc. 4080 Plaza Goldorado Circle Suite B Cameron Park California 95682 USA T 1 530 677 5515 W www.ghd.com</p>		<p>Michael Love &amp; Associates Hydrologic Solutions PO Box 4477 • Ararat, CA 95558 • (707) 822-2411</p>		<p>Drawn JH Designer JH</p> <p>Drafting Check Design Check</p> <p>Project Manager R.WONG Date 09/08/2020</p> <p>This document shall not be used for construction unless signed and sealed for construction.</p>		<p>Client <b>XXX</b></p> <p>Project <b>CORTE MADERA CREEK FISH PASSAGE</b></p> <p>Title <b>ALLEN PARK</b></p> <p><b>PRELIMINARY PLANTING PLAN W/O FLOODWALL SETBACKS</b></p> <p>Project No. <b>11211523</b></p> <p>Original Size <b>ANSI D</b></p> <p>Sheet No. <b>L-100</b></p>		<p>Scale <b>AS SHOWN</b></p> <p>Sheet <b>5</b> of <b>XX</b></p>	
No.	Issue	Drawn	Approved	Date											

## Appendix B

---

### **Tree Removal Table and Landscaping Planting Plans**

Tree Removal Table

Frederick Allen Park Planting Plans

**Lower Corte Madera Creek Planting Plan**

**LEGEND**

- PROPOSED CONTOURS
- CORTE MADERA CREEK RIGHT OF WAY
- PROPERTY LINE
- SURVEY CONTROL POINT
- SURVEY TOPO POINT (ELEV., DESCR)
- EXISTING EDGE OF PAVEMENT
- EXISTING EDGE OF GRAVEL PATH
- EXISTING BUILDING LINE (FROM MARINMAP GIS, APPROX)
- EXISTING LIVE TREE
- 12"Ø
- COAST LIVE OAK
- VALLEY OAK
- BUCKEYE
- BOX ELDER
- WILLOW

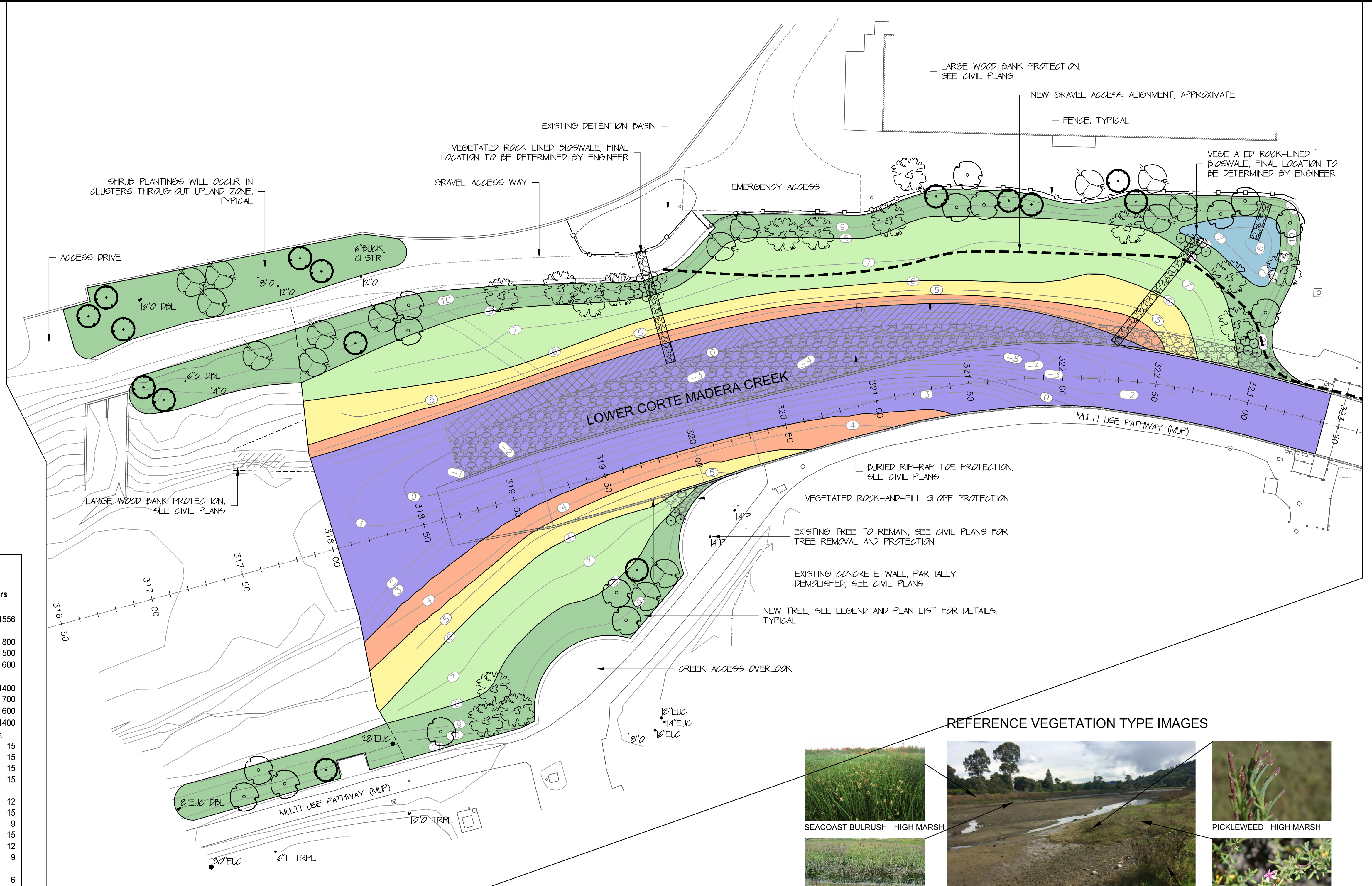
**NOTES:**

1. RIP BANK SUBSOL TO 6" DEPTH, 2 PASSES DIAGONAL RIP.
2. ADD 6" TO 9" TOPSOIL TRACKED WALKED 2 PASSES TO APPROX. 85-87% RELATIVE COMPACTION TO ACHIEVE A TOP SOIL LAYER FOR PLANTING.
3. IF TOPSOIL IS NOT AVAILABLE PLACE 2" THICK COMPOST LAYER ON BANK, TILL IN TO A DEPTH OF 9" AND TRACK WALK 2 PASSES.
4. COVER BANK WITH 0125EN EROSION CONTROL BLANKET, COVER WITH 700 GRAM COIR MAT. PINNED 24" ON CENTER WITH 18" WOOD WEDGE STAKES.
5. UPPER BANK ABOVE ELEVATION 7 TO BE SEED WITH NATIVE SEED MIX, SEE PLANT LIST.
6. SHRUB PLANTINGS WILL OCCUR IN CLUSTERS THROUGHOUT UPLAND ZONE.

**PLANT LIST**

Zone/Revegetation Strategy	Common Name	Latin Name	Container Size (minimum) <sup>1</sup>	Spacing (Feet on center)	Plant Numbers
<b>Low Marsh:</b> Plant within coir fabric for erosion control.					
	California cordgrass <sup>2</sup>	<i>Spartina foliosa</i>	Stubby Cell	1.5	1556
<b>High Marsh:</b> Plant within upper portion of zone; allow remainder to establish naturally.					
	pickleweed	<i>Salicornia pacifica</i>	transplant	1.5	800
	seacoast bulrush	<i>Bulboschoenus maritimus</i>	Stubby Cell	1.5	500
	fleshy jaumea	<i>Jaumea carnosa</i>	RP	1.5	600
<b>Transition Zone:</b> Plant within upper portion of zone; allow remainder to establish naturally.					
	alkali heath	<i>Frankenia salina</i>	D16	1.5	1400
	gumplant	<i>Grindelia stricta</i>	D40 or 1 gal	1.5	700
	marsh lavender	<i>Limonium californicum</i>	RP	1.5	600
	salt grass	<i>Distichlis spicata</i>	LT6	1.5	1400
<b>Upland:</b> Locate trees and shrubs in clusters for habitat value as well as shade and views for park users.					
<b>Trees</b>					
	boxelder	<i>Acer negundo</i>	TP4	15	15
	buckeye	<i>Aesculus californicus</i>	TP4	15	15
	coast live oak	<i>Quercus agrifolia</i>	TP4	15	15
	valley oak	<i>Quercus lobata</i>	TP4	15	15
<b>Shrubs</b>					
	coastal sagebrush	<i>Artemisia californica</i>	D16	4	12
	coffeeberry	<i>Frangula californica</i>	D40	6	15
	coyote brush	<i>Baccharis pilularis</i>	D40	6	9
	snowberry	<i>Symphoricarpos mollis</i>	D40	6	15
	sticky monkeyflower	<i>Mimulus aurantiacus</i>	D40	4	12
	toyon	<i>Heteromeles arbutifolia</i>	D40	6	9
<b>Detention Basin</b>					
<b>Shrubs</b>					
	arroyo willow	<i>Salix lasiolepis</i>	cutting	8	6
	California rose	<i>Rosa californica</i>	D40	6	9
<b>Herbaceous</b>					
	mugwort	<i>Artemisia californica</i>	D16	1.5	9
	western goldenrod	<i>Euthamia occidentalis</i>	D16	1.5	9
	bee plant	<i>Scrophularia californica</i>	D16	1.5	5
	wire rush	<i>Juncus balticus</i>	Stubby Cell	1.5	25
	creeping wildrye	<i>Leymus triticoides</i>	Stubby Cell	1.5	25
<b>Vegetated Rock-and-Fill Slope Protection</b>					
<b>Shrubs</b>					
	arroyo willow	<i>Salix lasiolepis</i>	cutting	5	25
<b>Seed Mixes:</b> 40 lbs PLS/ac, applied to disturbed areas >7' elev. % Composition by Weight					
<b>Upland</b>					
	blue wildrye	<i>Elymus glaucus</i>	40%		
	CA brome	<i>Bromus carinatus</i>	40%		
	sky lupine	<i>Lupinus nanus</i>	5%		
	small fescue	<i>Festuca microstachys</i>	10%		
	yarrow	<i>Achillea millefolium</i>	5%		
<b>Detention Basin meadow</b>					
	barley	<i>Hordeum brachyantherum</i>	50%		
	creeping wildrye	<i>Leymus triticoides</i>	30%		
	California brome	<i>Bromus carinatus</i>	10%		
	small fescue	<i>Festuca microstachys</i>	10%		

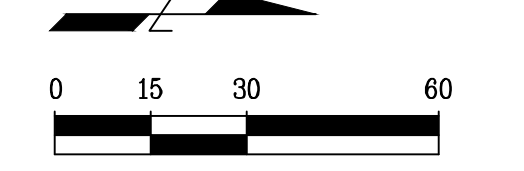
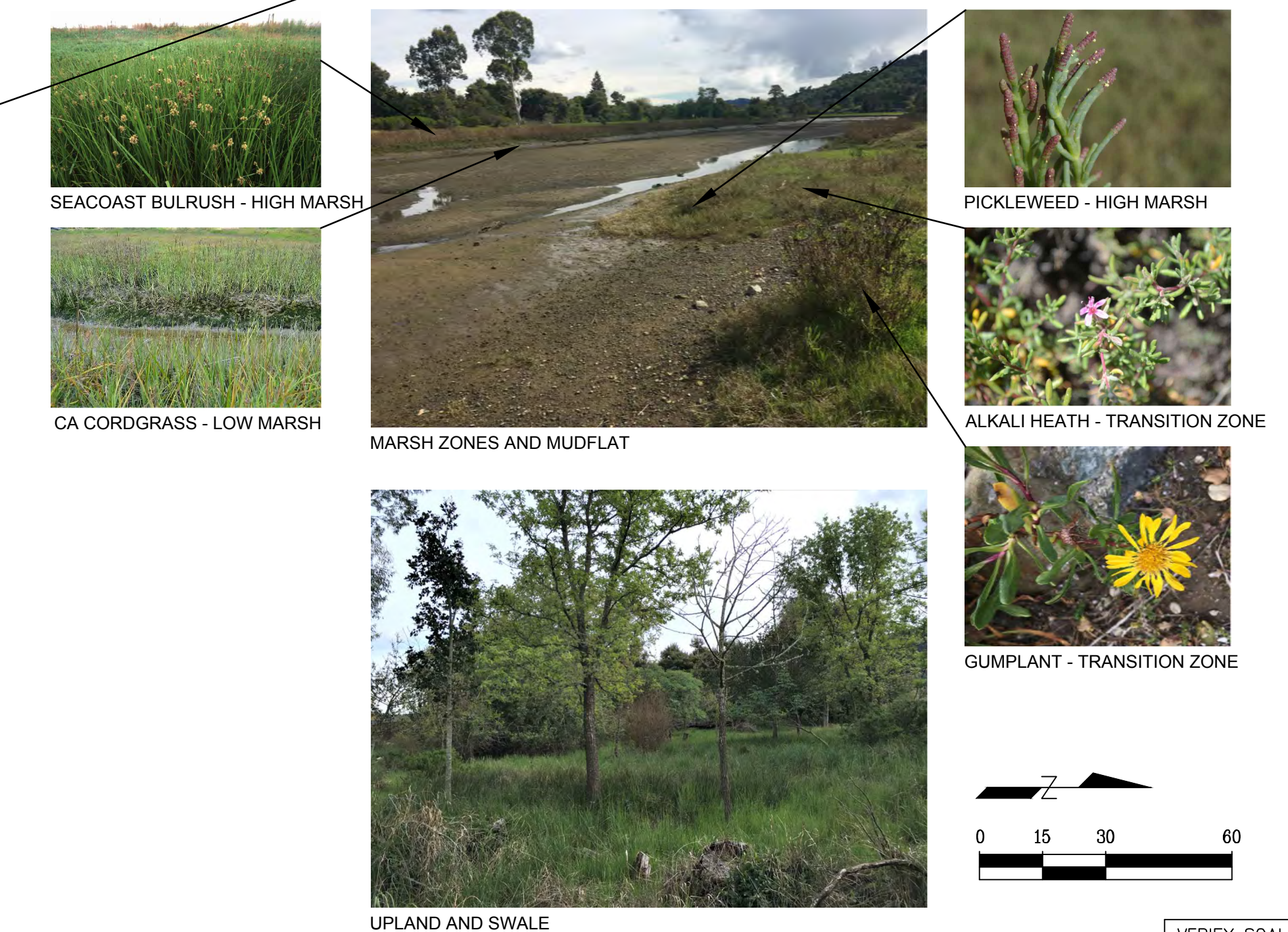
<sup>1</sup> Marsh and transition zone species may be planted from salvage or transplants to the extent available.  
<sup>2</sup> Coordinate with Invasive Spartina Project on selection of appropriate native material.



**REVEGETATION LEGEND AND ZONES**

ZONE	DESCRIPTION	AREA	ELEVATION RANGE CURRENT	FORECAST ELEVATION RANGE 2050 (ASSUMES 1.5' SLR)	FORECAST ELEVATION RANGE 2100 (ASSUMES 3' SLR)
	APPROX. MEAN SEA LEVEL	26,700 SF	3.5'	5'	6.5'
	INTERTIDAL MUDFLAT/BIO-TECHNICAL PROTECTION NO PLANTING	3,700 SF	2'-3.5'		
	LOW MARSH	7,000 SF	3.5'-4.5'	5'-6'	6.5'-7.5'
	HIGH MARSH	8,700 SF	4.5'-6'	6'-7.5'	7.5'-9'
	TRANSITION ZONE	18,500 SF	6'-8'	7.5'-9.5'	9'-11'
	UPLAND	23,300 SF	>8'	>9.5'	>11'
	SWALE / DETENTION BASIN	11,000 SF	N/A	N/A	N/A

**REFERENCE VEGETATION TYPE IMAGES**



PREPARED FOR:  
**FRIENDS OF CORTE MADERA CREEK WATERSHED**  
 PO BOX 415  
 LARKSPUR CA 94977

REVISIONS	DATE	BY

DATE: NOV/2020  
 SCALE: 1"=30'  
 MAPPING BY: JS  
 DESIGNED BY: JS  
 DRAFTED BY: FW  
 CHECKED BY: MJ

**REVEGETATION PLAN**  
 LOWER CORTE MADERA CREEK  
 CONCRETE CHANNEL REMOVAL PROJECT

Acad File Name: C:\Acad Dwg\1723\2020\1723\Friends of Corte Madera Creek\Drawings\RP1.dwg Plot date: 11/23/2020 1:14 PM Layout: REVEGETATION PLAN

VERIFY SCALES  
 ONE INCH