

## Phoenix Lake IRWM Retrofit

### Attachment 5 - Schedule

This Attachment presents the schedule for the Phoenix Lake IRWM Retrofit showing the sequence and timing of the proposed projects comprising the Retrofit. Since all the projects are located at Phoenix Lake and are interconnected in several ways, such as function, design, environmental review and permitting, and operation, they will generally be implemented in concert. For example, the design, environmental review and permitting, and construction phases of all the projects will be the same.

The total grant period is anticipated to last from September 1, 2011 to February 28, 2016.

Initial work will focus on the Memorandum of Agreement between FZ9 and MMWD and additional technical studies needed to complete Assessment and Evaluation (Tasks 1 and 4). Upon completion of these tasks, work will proceed on preparing the 60% designs for all projects. This level of design will be suitable for supporting environmental documentation and permitting. Upon completion of the 60% design, work will proceed on the technical studies needed to support environmental review and permitting.

As explained in Attachment 3, Workplan, environmental documentation will consist of a single combined CEQA/NEPA document covering the whole Phoenix Lake IRWM Retrofit, including all five component projects. Permitting will proceed concurrently with environmental review. Environmental review and permitting are expected to take nearly two years.

Final design for all projects will proceed upon completion of environmental review and permitting. Based on the results of environmental review and permitting process, any necessary modifications to the projects' designs will be made, and the 90% and 100% designs will be completed.

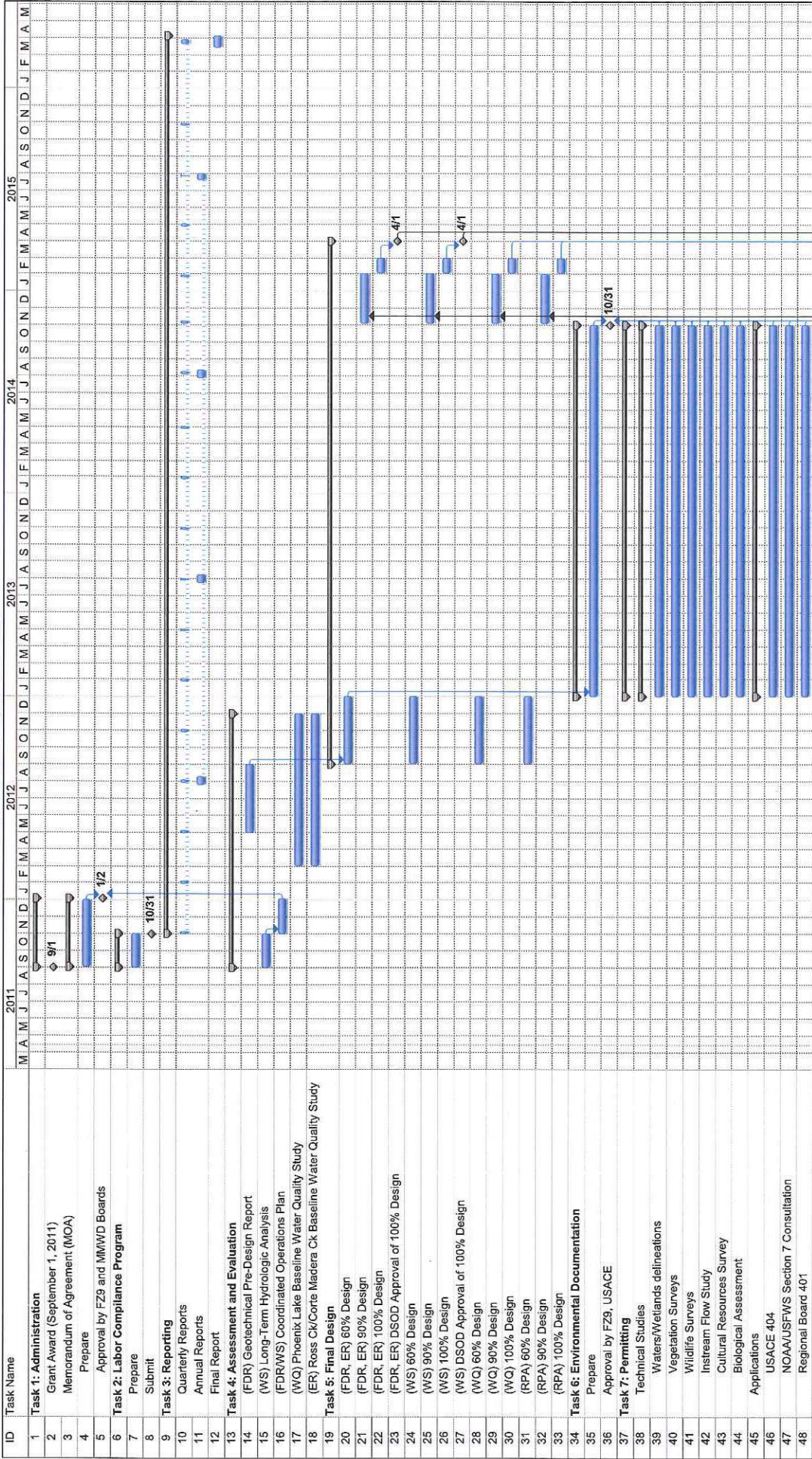
Construction contracting will follow final design. In addition to project facilities and improvements, construction will also include mitigation measures. For example, it is anticipated that new fringe wetlands along the lake shoreline will be required as mitigation for the potential loss of wetlands as a result of project construction and future lake operations. It is logical that these new mitigation wetlands be built in conjunction with the other construction work.

Installation of the lake circulation devices under the Water Quality Project will be done in the ensuing late winter-early spring following completion of construction of the other projects to give the lake enough time to fill and stabilize.



**SCHEDULE**

**Phoenix Lake IRWM Retrofit**



Task  
 Progress  
 Milestone  
 Summary  
 Rolled Up Task  
 Rolled Up Milestone  
 Rolled Up Progress  
 Split  
 External Tasks  
 Project Summary  
 Group By Summary  
 Deadline