

Department of Public Works
3501 Civic Center Drive
Suite 304
San Rafael, CA 94903
415 473 6528 T
415 473 3799 F
415 473 3232 TTY
CRS Dial 711
marincounty.org/pw

06.01.23



MARIN CITY STORMWATER PLAN



COMMUNITY
MEETING #1

Photo Credit: Marin IJ



Schaaf & Wheeler
CONSULTING CIVIL ENGINEERS



Slide 2

AGENDA – COMMUNITY MEETING #1

WE VALUE YOUR TIME AND INPUT

- Welcome
- Project Overview and Background
- Optional Walking Tour
- Facilitated Q&A
- Raffle



Slide 3

WELCOME!
THANK YOU FOR JOINING

Task Force & Community



Project Team



Zone 3



Board of Supervisors



Slide 4

TASK FORCE

- Non-Governmental Organizations
- Community/Tribal Organizations
- Public Agencies
- Community Members
- Local businesses



Slide 5

COMMUNITY

- Community meetings to occur throughout the process
- Task Force consists of Marin City community stakeholders
- Additional community input through: ISOJI, Flood Zone 3 Advisory Board, and Local Community Coordinator

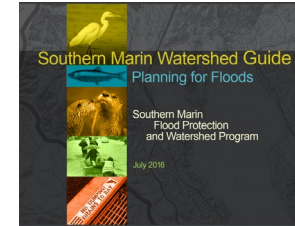


BACKGROUND

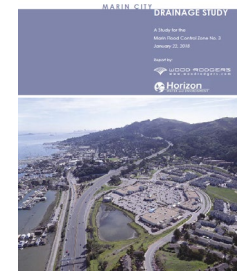
PAST ACTIVITIES

Slide 6

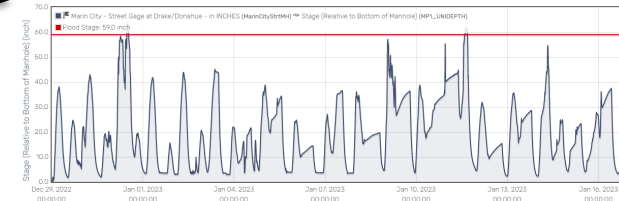
- 2014 – flooding



- 2017 – flooding



- 2021 – flooding



- Marin City Stormwater Plan**



STORMWATER PLAN GOALS

Slide 7

1. **Identify** projects to protect public access during flood events.
2. **Recommend** improvements to reduce flood risk to Marin City.
3. **Improve** effectiveness of flood management operations.
4. **Integrate** with CalTrans Planning (but focused on Marin City community and not the freeway).
5. **Attract** Funding Sources



Slide 8

MARIN CITY STORMWATER PLAN

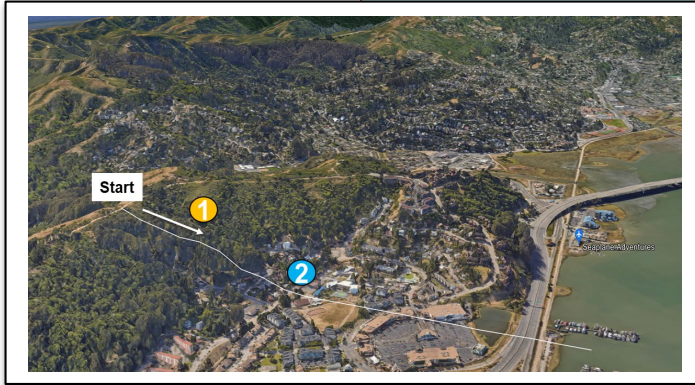
MOVING FORWARD

- Learn from flooding events
- Build upon previous work
- Scope for Marin City Stormwater Plan
 - Collect Ideas/Data
 - Modify model
 - Analyze
 - Recommend
 - Prioritize
 - Develop Plan
- What is stormwater?

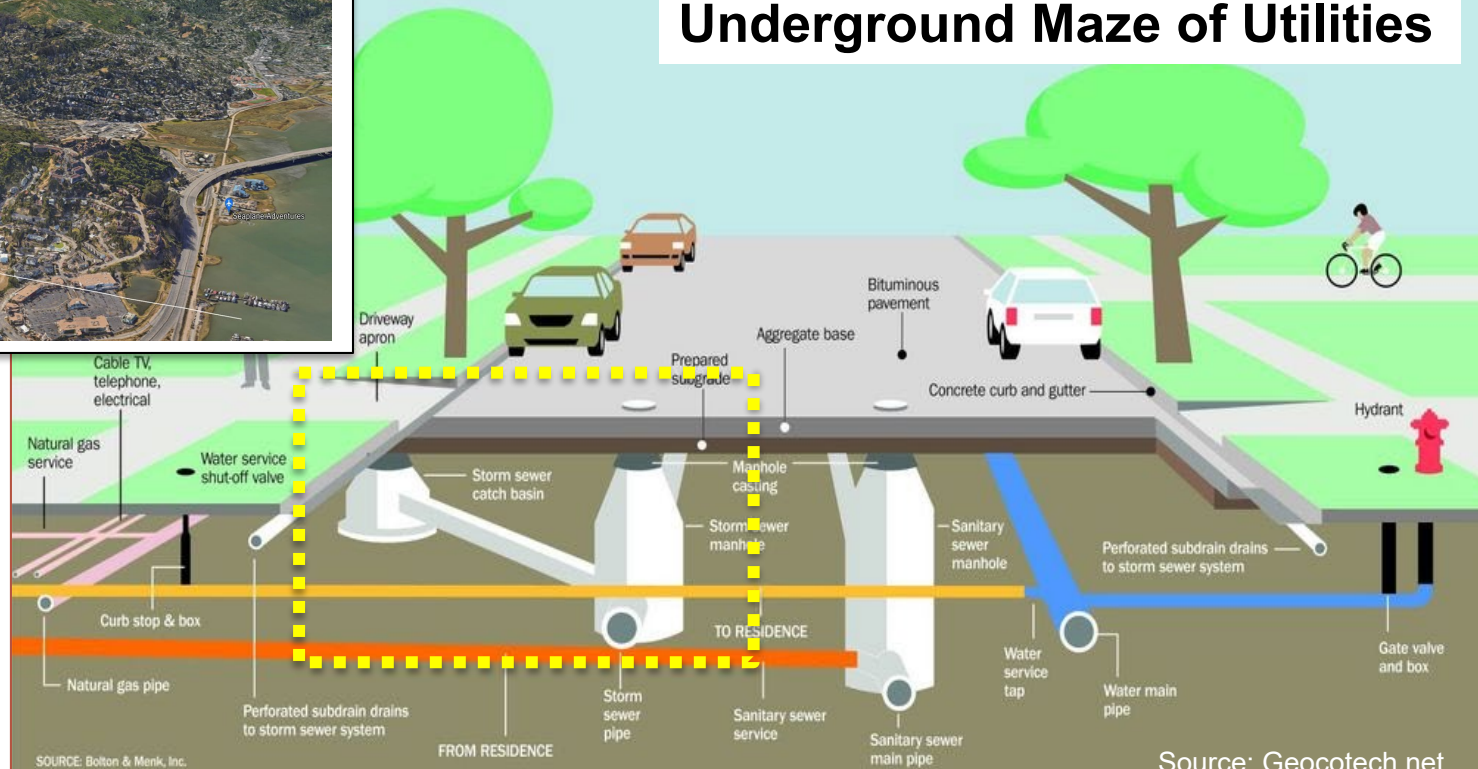


WHAT HAPPENS WHEN IT RAINS

FOLLOWING A DROP OF RAIN



Underground Maze of Utilities

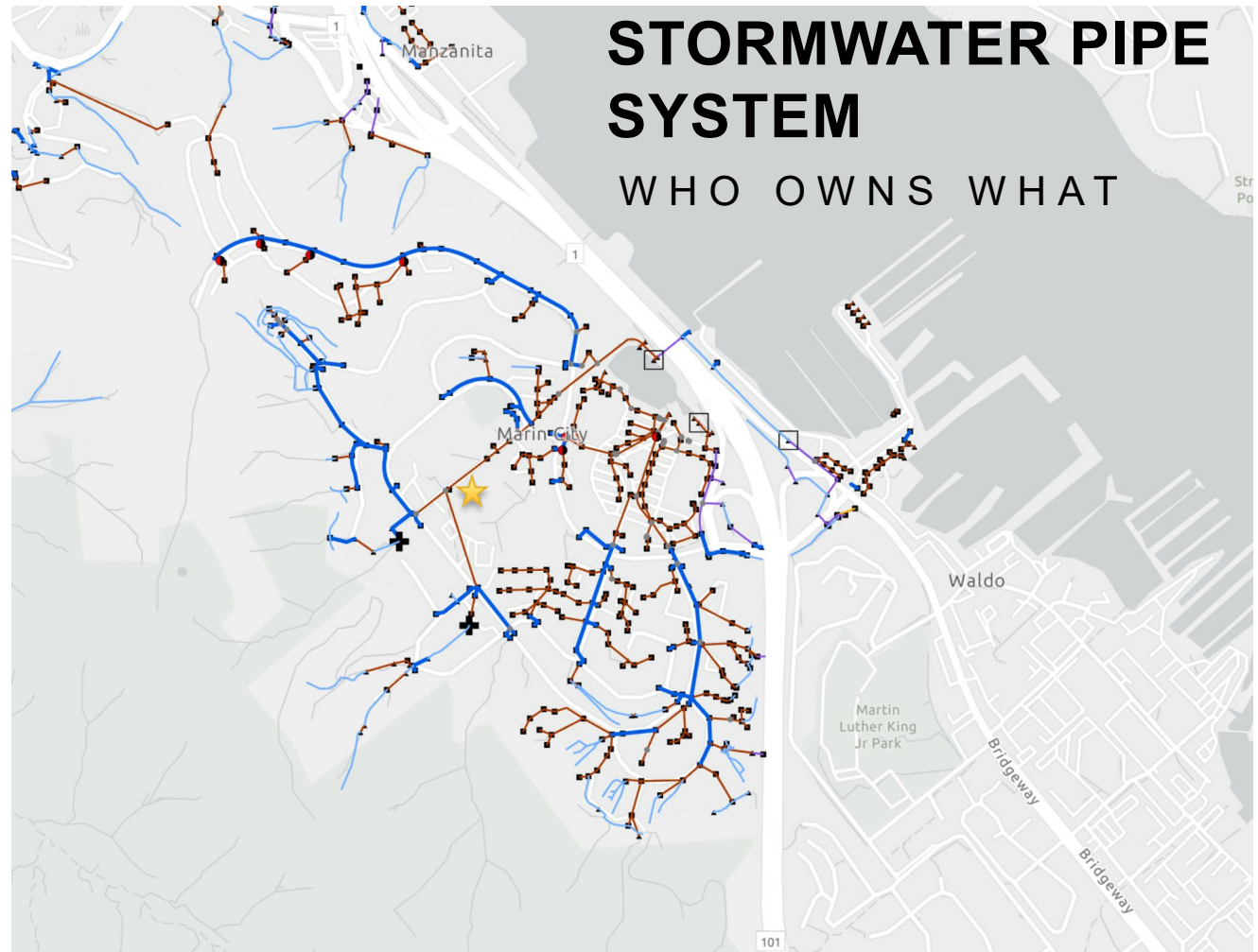


Marin City Stormwater Plan
Task Force Meeting 1
<https://marinflooddistrict.org/marin-city-stormwater-plan/>

— Private 66%
— County 28%
— Caltrans 6%



Schaaf & Wheeler
CONSULTING CIVIL ENGINEERS



Stormwater Issues

Sea Level Rise



Debris



Steep Hillslopes



**Pipe Capacity/
Condition**



Drainage

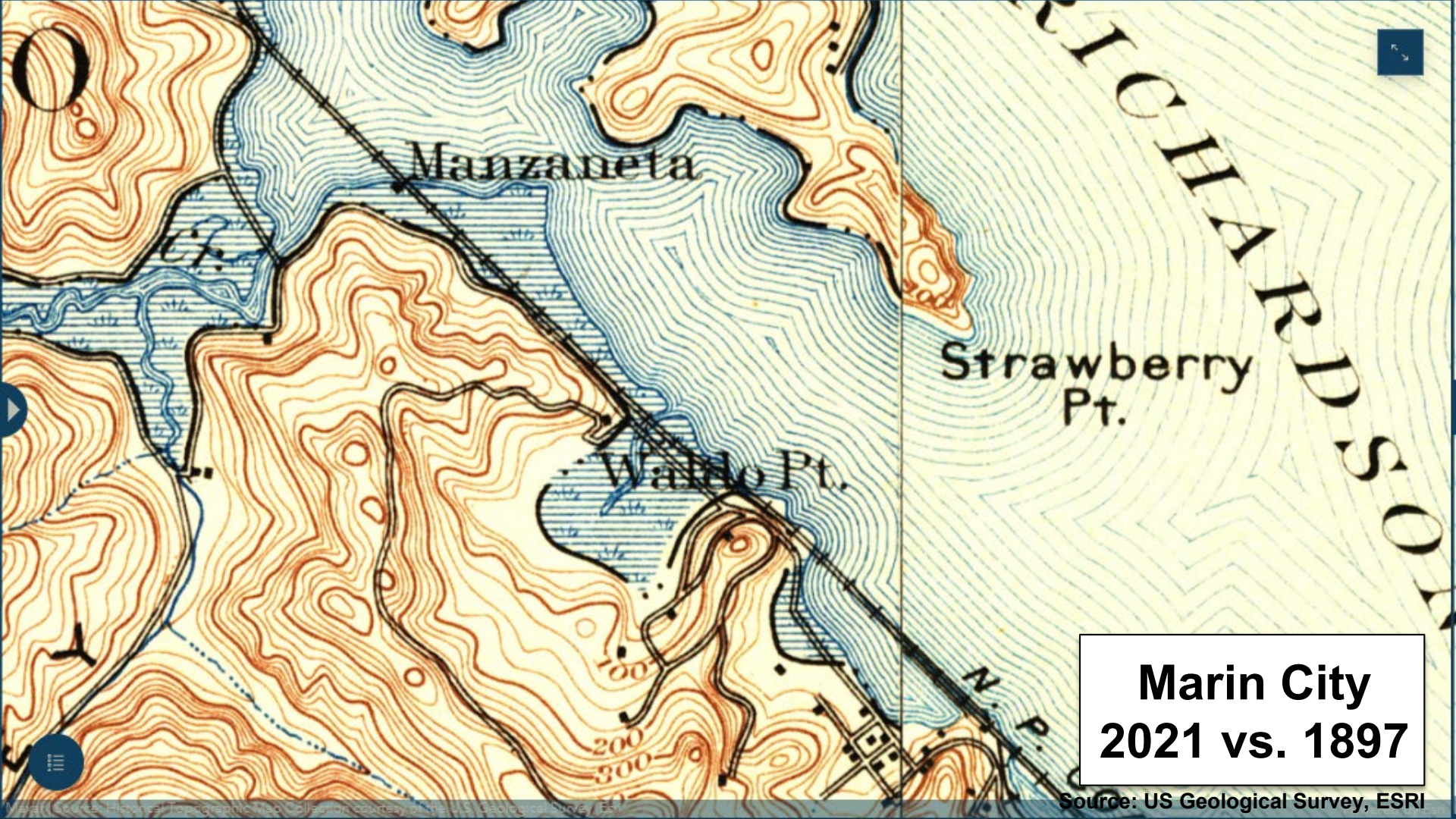
Flooding

**Detention
Pond**



Donahue/Drake





**Marin City
2021 vs. 1897**

Source: US Geological Survey, ESRI



Flooding

1. Drake Donahue
2. Near Shopping Center Pond
3. Near Library



Drainage

- A. 1st Missionary Baptist Church Rack
- B. Eureka/Pacheco Ditch
- C. Hillside drainage/Cole Dr
- D. Dutton Drake Ditch
- E. Staircase/Dutton Court Inlet
- F. **Others?**



Private 66%

County 28%

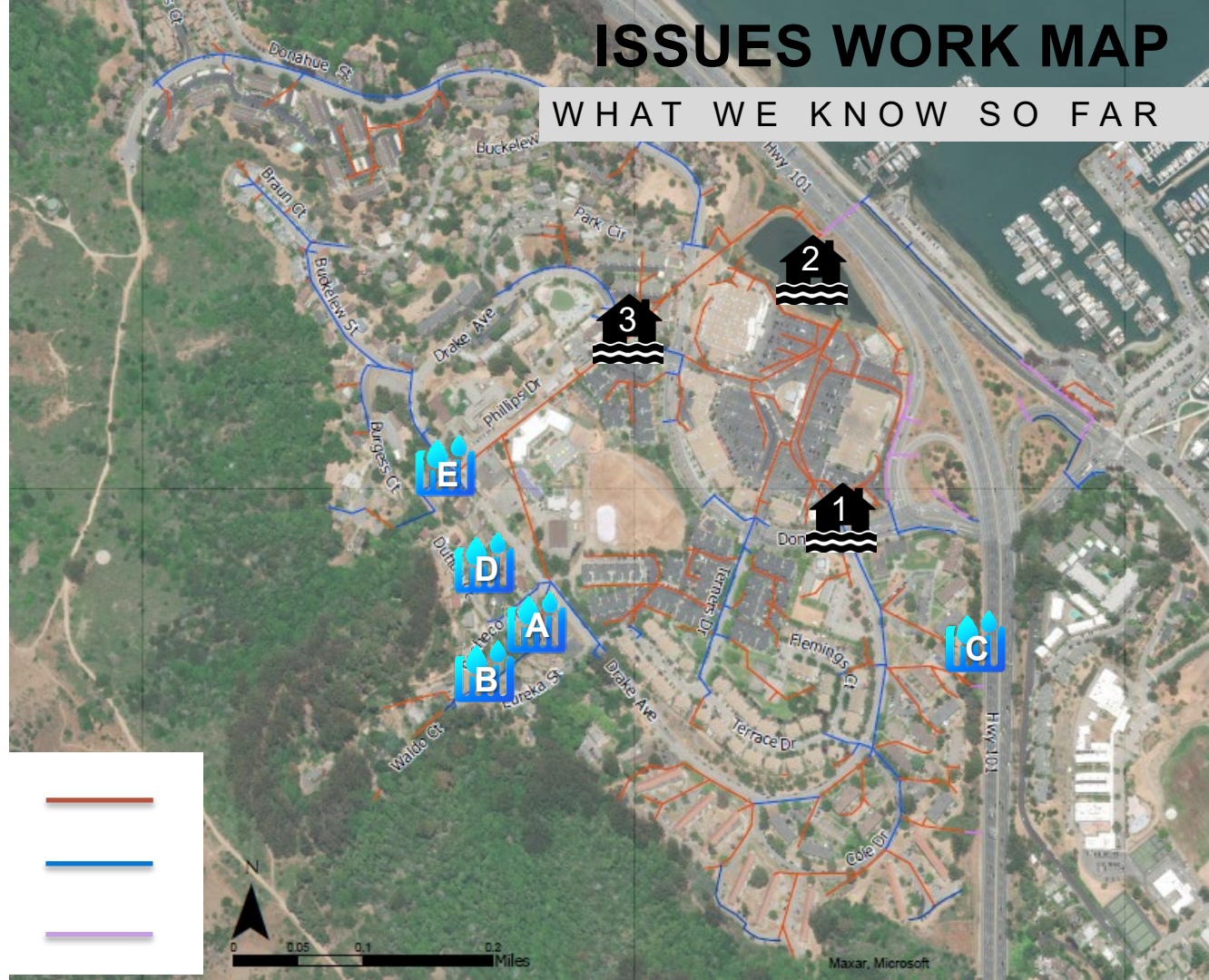
Caltrans 6%

Schaaf & Wheeler
CONSULTING CIVIL ENGINEERS



ISSUES WORK MAP

WHAT WE KNOW SO FAR



WHAT WE SAW IN THE FIELD

UPPER WATERSHED

Slide 14

broken pipe



clogged drains

debris



erosion



WHAT WE SAW IN THE FIELD

LOWER WATERSHED

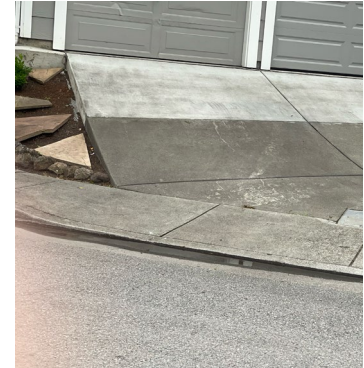
Slide 15

steep watershed



low spots

pond outfall

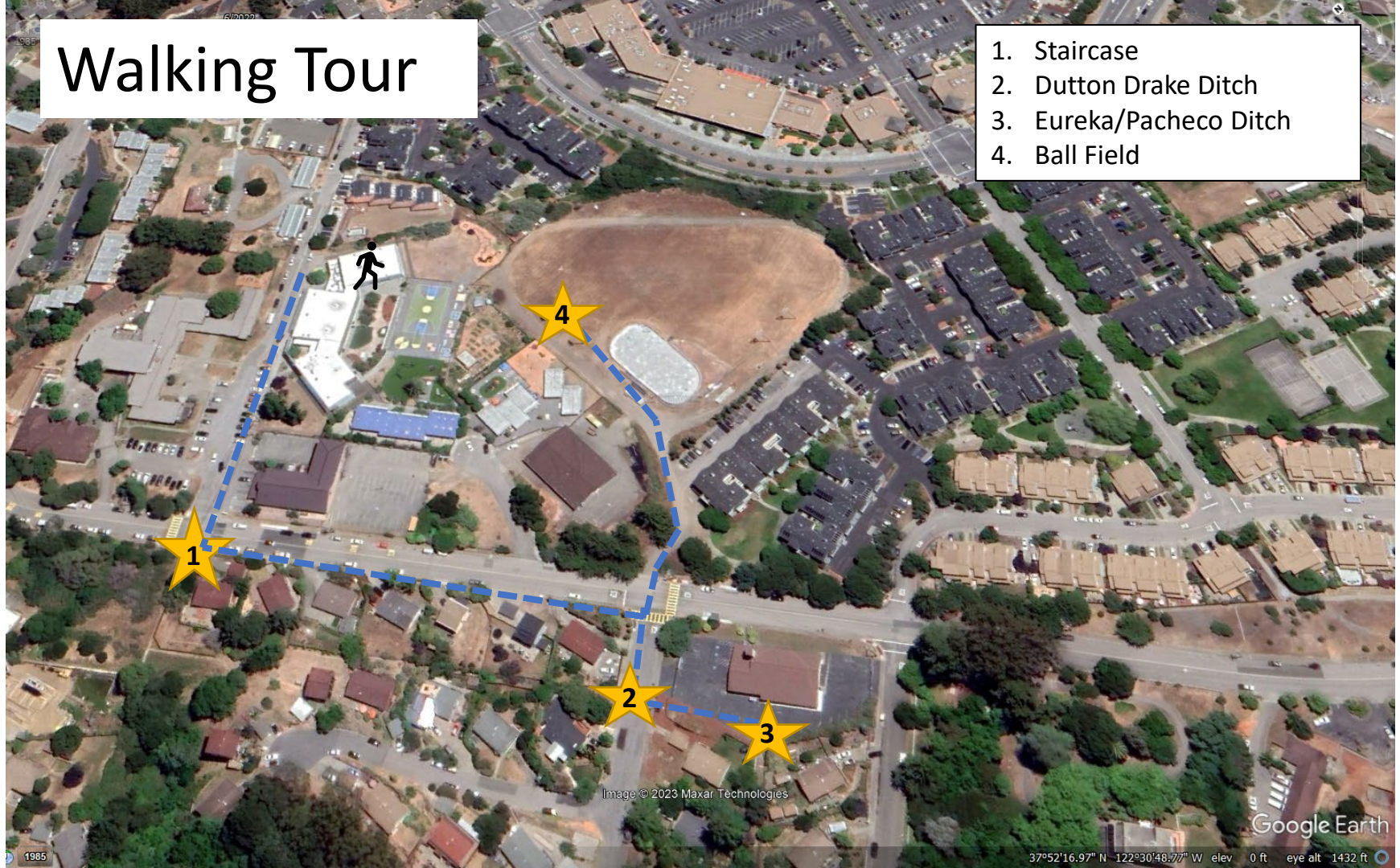


low lying area



Walking Tour

1. Staircase
2. Dutton Drake Ditch
3. Eureka/Pacheco Ditch
4. Ball Field



Slide 18

THANK YOU TO OUR DONORS!

