



# Bicycle & Pedestrian Advisory Commission

Meeting Summary  
June 27, 2022 at 6:00 p.m.

---

NAME	REPRESENTATION
Rebecca Brouwer (RB)	City
Katy Jones (KJ)	City
Sylvia Sichi (SS)	City
Jason Smith (JS)	Alamance County ETJ
Aaron Davis (AD)	Recreation and Parks Director
Ashley Ownbey (AO)	Interim Development Director
Franz Holt (FH)	City Engineer

*Andrew Bixler, Sarah Elder, and Nate Wood had excused absences.*

## **NORTH MEBANE MULTI-USE PATH NETWORK**

AO introduced FH to the BPAC.

FH shared background on the proposed multi-use path network. Several development projects have contributed to the path as part of frontage requirements. This course of action left several gaps. FH spoke with developers for projects at several new developments<sup>1</sup> to address these gaps. Developers were asked to work together to connect paths to create a contiguous multi-use path connecting to Cates Farm Park. City Manager Chris Rollins (CR) became involved and advocated for an east-west connection to Lake Michael Park as well. FH remarked on his team's continued work to realize a connection over the Lake Michael dam. In total this network will include many important local points and attractions for public use. FH remarked developers were excited by the idea and are expected to spend at least \$800,000 on connections and new bridges and boardwalk. Once the path is completed, it will be taken over and maintained by the City of Mebane. The multi-use paths will be 10 ft. wide and paved at most points, with a few spots employing a smaller width for a concrete parking pad. FH remarked on hopes to realize more eastern connections, where the City anticipates new development. He mentioned a proposed neighborhood on Saddle Club that includes public recreation.

AD provided details on the proposed public recreation on Saddle Club. The proposed park features sand volleyball and soccer fields.

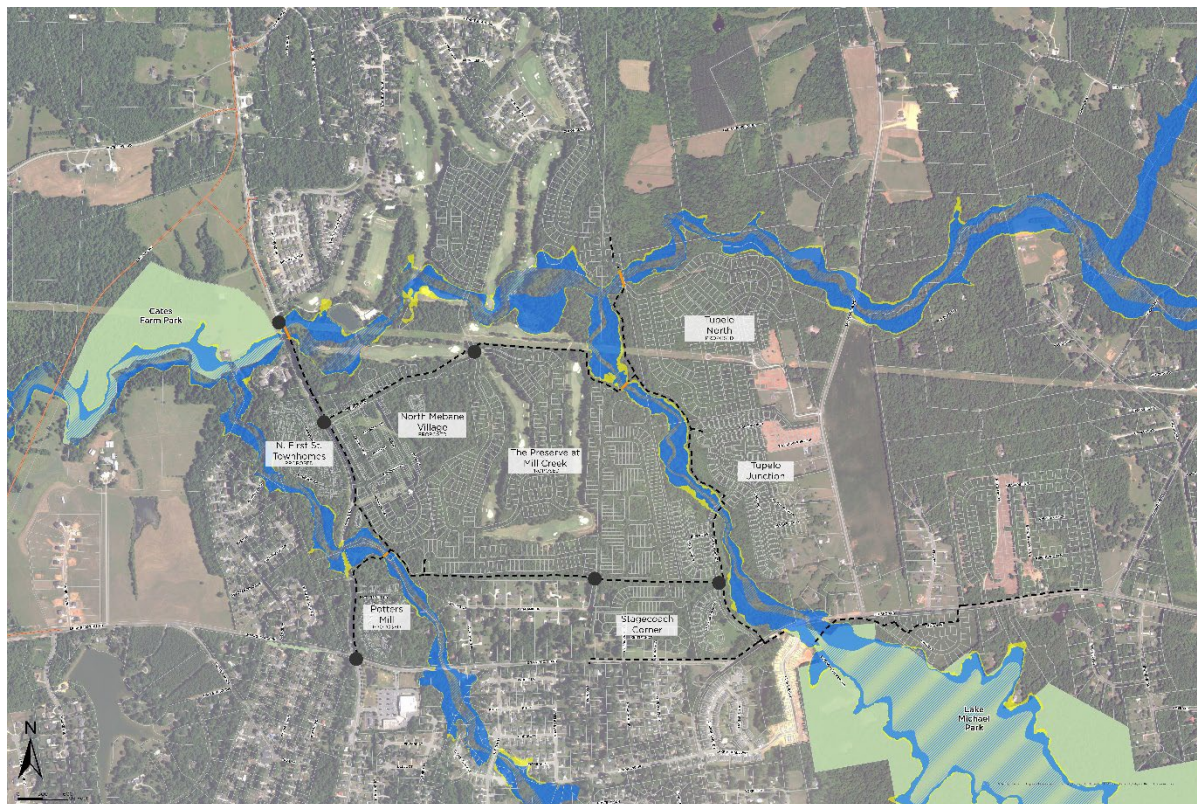
---

<sup>1</sup> N First St. Townhomes, Potters Mill, North Mebane Village, The Preserve at Mill Creek, Stagecoach Corner, Tupelo Junction, and Tupelo North; see map.



# Bicycle & Pedestrian Advisory Commission

Meeting Summary  
June 27, 2022 at 6:00 p.m.



North Mebane - Proposed Development & Multi-Use Path Network

1 inch = 300 feet

----- Paved, Multi-Use Path    ——— Bridge & Boardwalk    ● Crosswalk

This map shows a multi-use path network in response to proposed development in North Mebane. This map does not mean to indicate other trails and paths cannot be constructed with the proposed projects. Additional trails and paths are encouraged but will not be City owned or maintained.

SS asked if the developers are required to engage in the project.

FH clarified participation is part of an agreement between developers, with the City helping to coordinate developers. He reported the proposal has generally been well-received. Sections of the multi-use path network will be connected as developments are completed. Potters Mill and N. First St. Townhomes have already arranged for future connections to other developments.

The BPAC generally remarked on the benefits of development of the network.

AD commented on connections between City parks.

AO commented North Mebane Village is expected to develop some public civic spaces, which would be accessible via the multi-use path network.



# Bicycle & Pedestrian Advisory Commission

Meeting Summary

June 27, 2022 at 6:00 p.m.

---

RB asked about maintenance costs for the City.

FH reviewed items Council and City staff consider before assuming maintenance, including the condition of the path, ADA accessibility, etc. He added the plan is for City upkeep to begin once a substantial network has been built.

JS inquired as to intended use of green space in North Mebane Village.

FH replied the layout needs to be completed and involves coordination with the neighboring development.

AO shared the area is in a Watershed Overlay District and there are impervious surface restrictions.

JS inquired as to the \$800,000 estimate.

FH clarified it represents the sum of bridges, trails, and boardwalk costs. Developers will cover the construction cost.

AO added trail construction enables developers to meet public recreation obligations. She added developers will also be contributing to construction of various traffic management strategies.

FH discussed conversations with NCDOT regarding traffic management strategies, including calming devices and a potential traffic signal.

## **2022-2023 CAPITAL PROJECTS BRIEFING**

FH discussed upcoming capital projects.

- Holt Street Greenway: One easement is needed before the project is put out for bid.
- South Third Street Extension Sidewalk: The current design is to extend from Corporate Park Drive to the Governor's Green subdivision. In the future, an extension could be to the Copperstone subdivision.
- West Carr Street Sidewalk Extension: This extension provides a connection to EM Yoder Elementary.
- Lake Michael Road Connector: This is approximately 1,600 feet connection between the Retreat at Lake Michael and Lake Michael Park's entrance.

## **UPCOMING LONG-RANGE PLANNING EFFORTS**



# Bicycle & Pedestrian Advisory Commission

Meeting Summary

June 27, 2022 at 6:00 p.m.

---

AO shared consultants have been selected for the Recreation and Parks Comprehensive Master Plan and the Bicycle and Pedestrian Transportation Plan, which will have combined public engagement. Berry Dunn will take the lead for Recreation and Parks and Stewart will facilitate the Bike/Ped side.

AD provided an update from the staff kickoff meeting. The consultants will begin work after July 4<sup>th</sup> and City staff have started sharing requested documents. The consultants are developing opportunities for the Mebane community to provide input throughout the process.

RB suggested the Mebane on the Move Facebook group as a potential means of outreach.

AD expressed interest and remarked on the need to ensure a mix of people from different areas within Mebane. He noted a disparity in development north and south of the interstate.

The BPAC reviewed maps and discussed.

AD reviewed the plan to invite the project consultants to a combo meeting of the RPAC and BPAC.

SS and RB asked about the cycling event presented to the BPAC in April.

The BPAC discussed, agreeing they were to act as support if Mebane was chosen as the location.

## **NEW & ONGOING BUSINESS**

### *Mebane Bike Routes*

JS updated BPAC members have not been able to meet and discuss possible bike routes. He will send a Doodle poll to set up a time to discuss.

The BPAC commented on the new sign faces installed for the City Trails Map.

AD commented on funding installing the new maps. The company made more maps than Mebane requested.

The BPAC discussed possible new locations for the urban trail maps place and the possibility of using discretionary funding (\$10,000) to pay for new sign posts. The BPAC decided on three locations:



# Bicycle & Pedestrian Advisory Commission

Meeting Summary

June 27, 2022 at 6:00 p.m.

---

- New pocket park at First & Stagecoach
- Mebane Community Park
- Fifth Street pocket park

## *Mebane Bicycle Campaign*

The BPAC discussed the social media posts and yard sign distribution during the bicycle campaign.

RB updated the BPAC of another bike helmet award and suggested further discussion of events for distribution of the helmets.

JS asked about engagement with the bicycle campaign social media posts compared to other recreation posts.

KJ replied most of the posts were educational and did not require comments. She noticed a lot of likes and shares but not many comments.

AD shared how well different posts performed, noting good engagement with the City Trails Map, yard sign post and the best engagement with the Mountains-to-Sea Trail post.

AD located the expected cost of new sign posts, remarking \$12,000 was quoted for three new signs, which included a redesign. He suggested instead of updating the sign posts at existing locations, using the budgeted amount to install three new signs in the locations discussed by the BPAC. This would mean the BPAC is not required to use its discretionary funding.

The BPAC expressed support for AD's idea and briefly discussed the Mebane Trails Rangers' repainting of urban trail markers.

## *Mebane Activity Challenge*

KJ confirmed she will continue working to promote the Mebane Activity Challenge.

## *Updates*

AO shared that staff have been reviewing results of the Ashbury Hot Spots Study and she hopes to invite the Public Works Director to an upcoming meeting to share the results.

JS has been working with the Friends of the Mountain to Sea Trail for help with marking the route that goes through town. The route has been mapped and the Friends group is now



# Bicycle & Pedestrian Advisory Commission

Meeting Summary

June 27, 2022 at 6:00 p.m.

---

consulting to get recommendations on physical markers such as signs and blazes.

RB reported that two residents have contacted her about the crossing at Jackson and S Fifth. Citizens continue to be concerned about when pedestrians have the right of way and are protected and how bikes play into that. She expressed interest in crosswalk education.

JS agreed.

KJ recommended involvement of law enforcement.

RB added crosswalk concerns at Jackson and Fifth are recurring.

The BPAC discussed the ineffectiveness of the blinking hawk light.

RB asked if there would be a traffic study related to the opening of the 119 Bypass.

AO replied she would look into it further.

RB suggested she draft a letter for KJ to review and send to the City Manager for further discussion.

The meeting was adjourned at 7:20 p.m.

*Meeting summary by Jamie Andrews, Finance Intern and edited by Ashley Ownbey, Interim Development Director*