

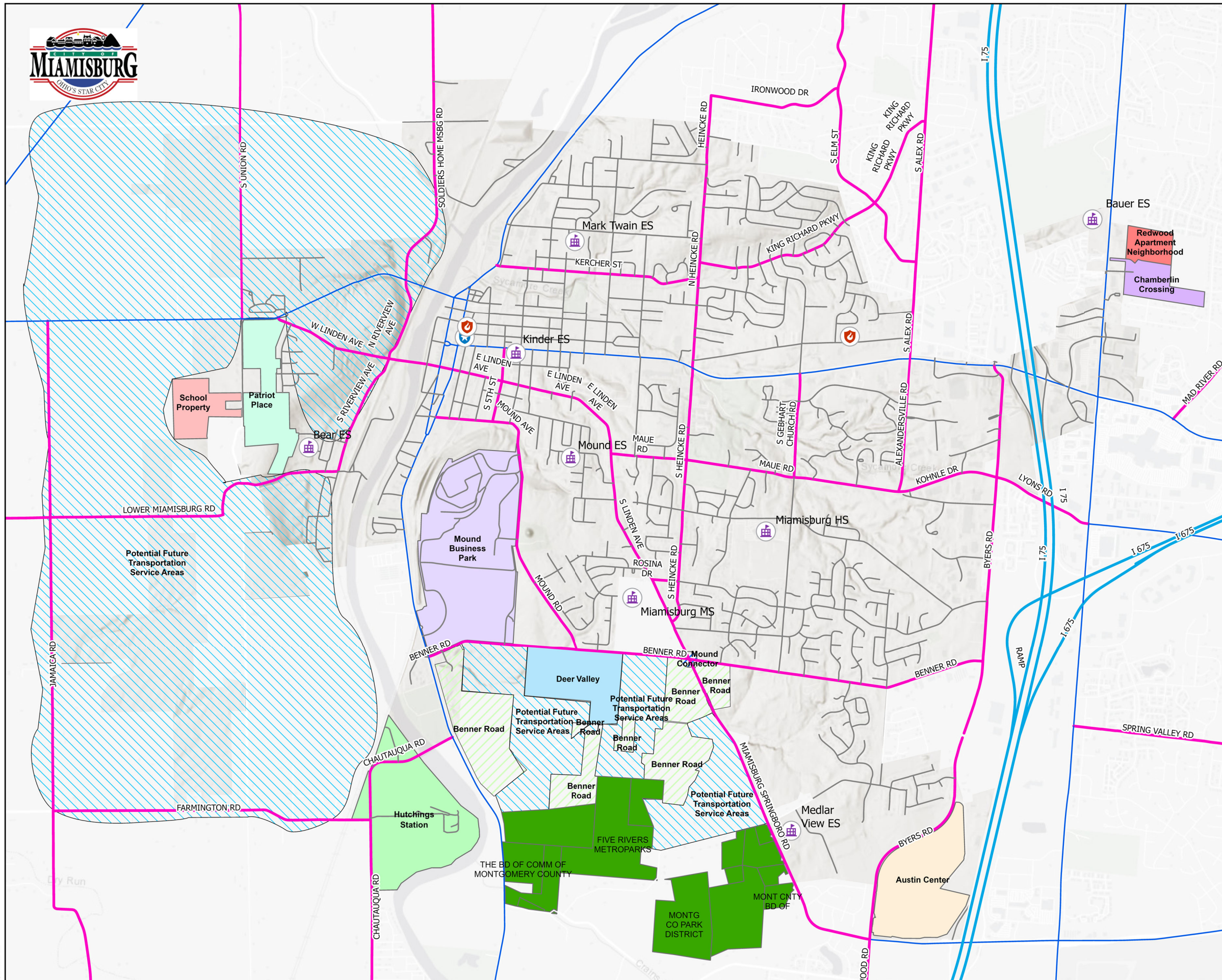


Map Contents:

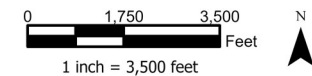
Development Area	Project Description
Hutchings Station	300 apartment units, 250 room hotel, indoor basketball/volleyball courts, support services (medical office, restaurant, etc.) and various ballfields (soccer, softball, baseball, pickleball, etc.)
Deer Valley	200 single-family residential units
Patriot Place	174 single-family residential units
Chamberlin Crossing/Redwood	117 single-family residential units + 141 apartment units
Austin Center	Redevelop site to include 5 multi-tenant light industrial buildings (60k SF each), light manufacturing (35 acres), and supporting commercial (20 acres).
Mound Business Park	200 acres of light industrial
Elementary School on Union Road	50-acre site for future elementary school building (300 students)
West of Great Miami River	Generally, land west of Great Miami River, whether within or outside the City limits, is anticipated to be developed into low-density (2 units per acre) single-family residential development, with some convenience retail at major intersections
South of Benner Road	Generally, land east of Great Miami River, whether within or outside the City limits, is anticipated to be developed into low-density (2 units per acre) single-family residential development

Legend

- Fire Stations
- Police Stations
- Miami's Schools
- Roadways
 - Local
 - Collector
 - Arterial
 - Interstate
- Crains Run Conservation Area
- Development Site Name
 - Austin Center
 - South of Benner Road
 - Chamberlin Crossing
 - Deer Valley
 - School Property
 - Hutchings Station
 - Mound Business Park
 - Patriot Place
 - Redwood Apartment Neighborhood
 - Potential Future Transportation Service Areas
 - Mound Connector



Date Printed: 11/9/2023 2:17 PM



Credits: Montgomery Co GIS: Fire, Police & Schools. ODOT TIMS: Road Class. Development Areas: City of Miami's Star City - City Planner info

**City of Miami's Star City, OH
Development Areas**

Figure DV-2023