

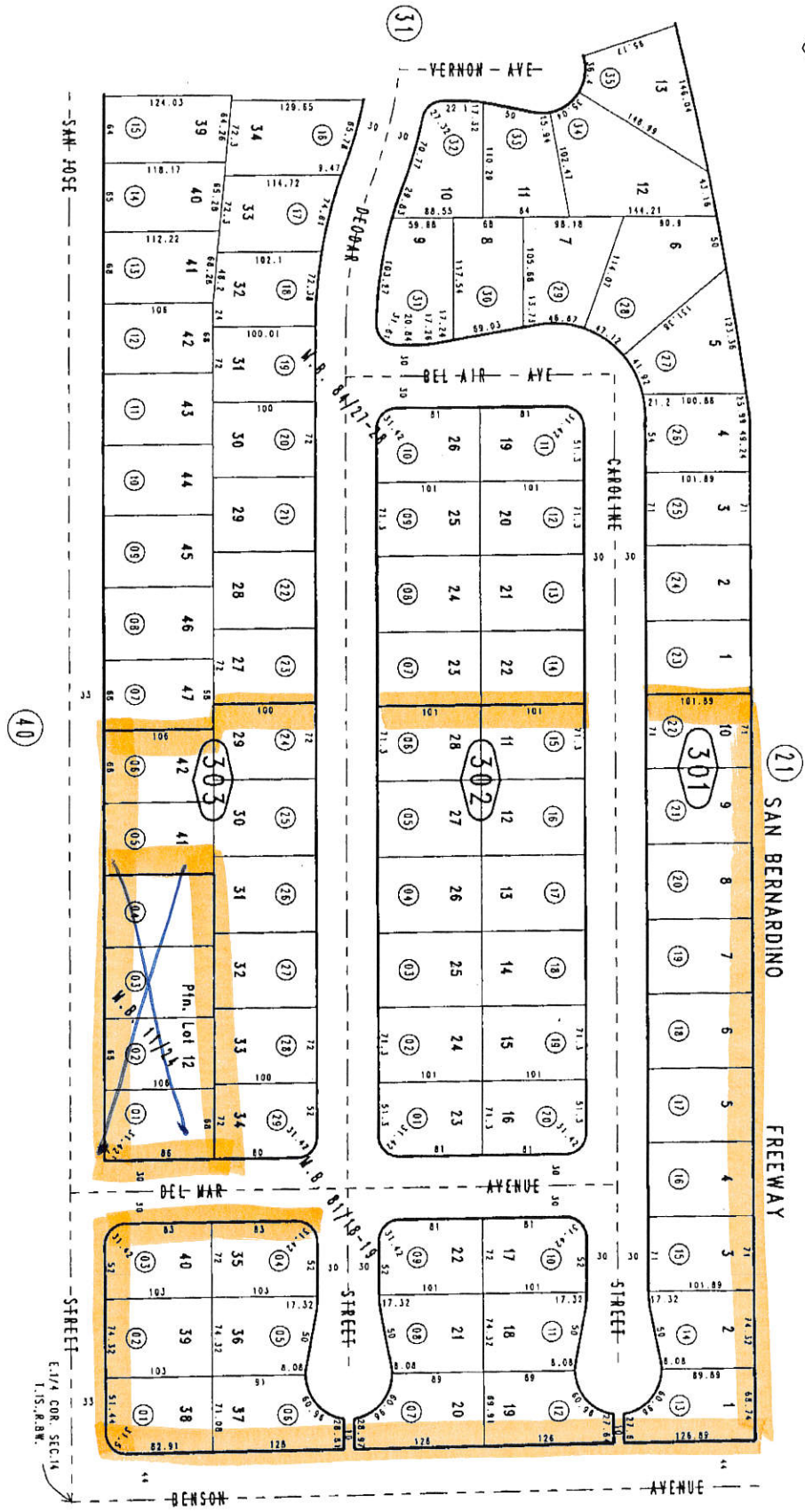
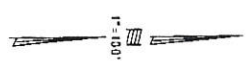
THIS MAP IS FOR THE PURPOSE OF A5 VALUATION EXAMINATION ONLY.



Ptn. Sycamore Water Development Co's. Add., M.B. 11/24

City of Montclair
Tax Rate Area
11008

1000 - 30



October 2004

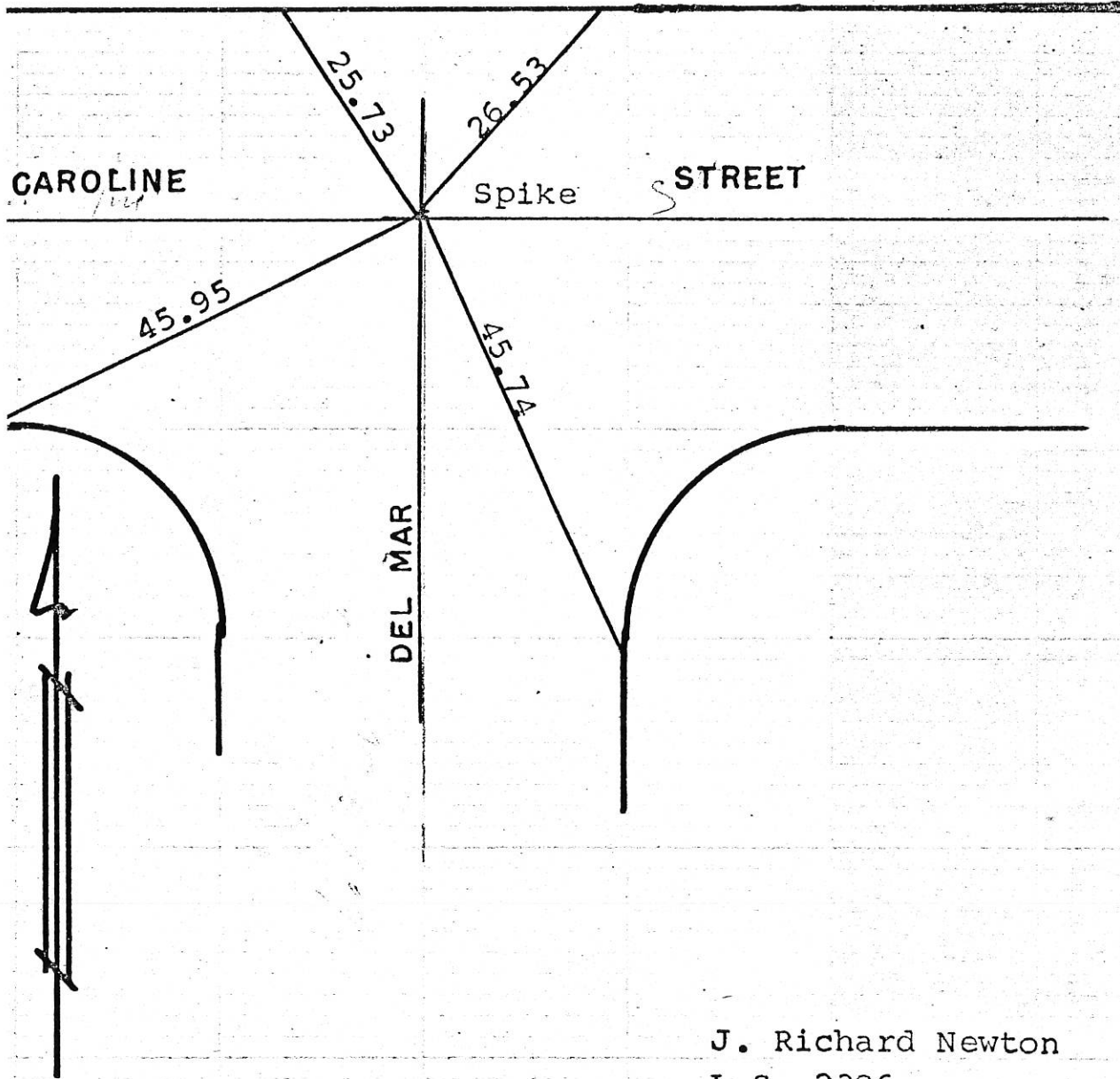
Tract No. 5200, M.B. 81/18-19
Ptn. Tract No. 5201, M.B. 84/27-28

Ptn. N.E. 1/4, Sec. 14
T. 15, R. 8 W.

Assessor's Map
Book 1008 Page 30
San Bernardino County

REVISED

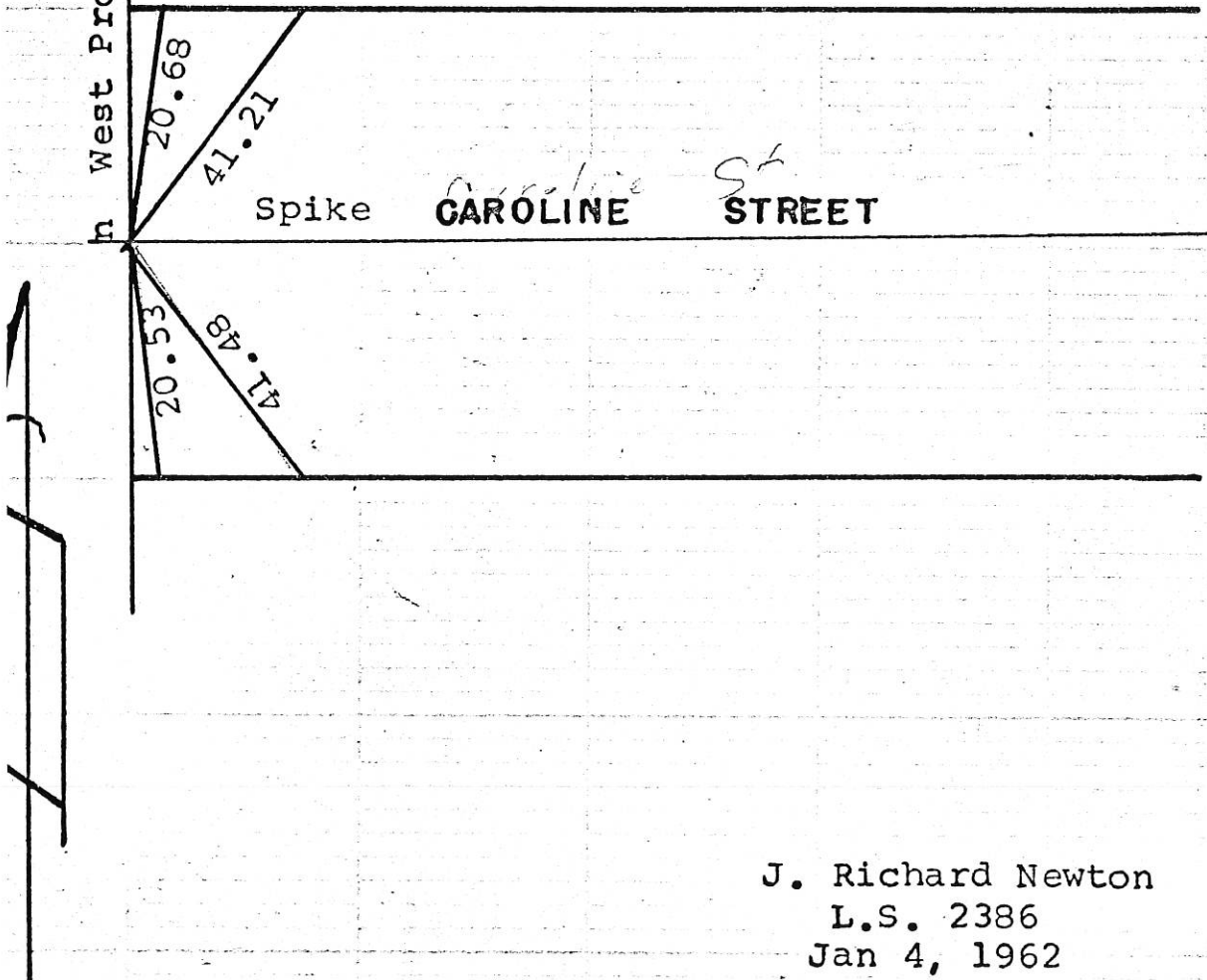
All ties to Nail in Curb.



J. Richard Newton
L.S. 2386
Jan. 4, 1962

West Property Line Tract 5200

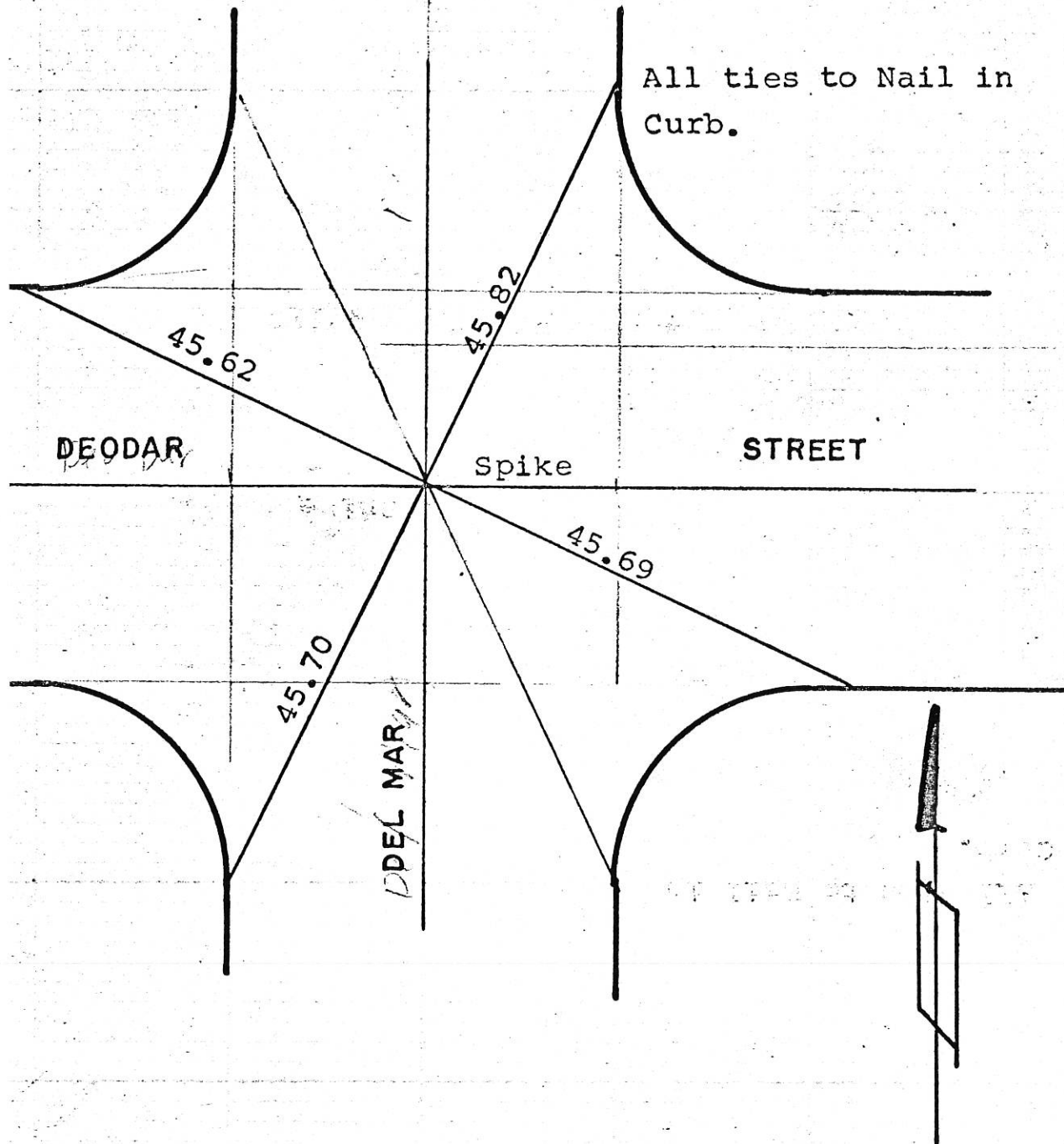
All ties to Nail in Curb.



J. Richard Newton
L.S. 2386
Jan 4, 1962

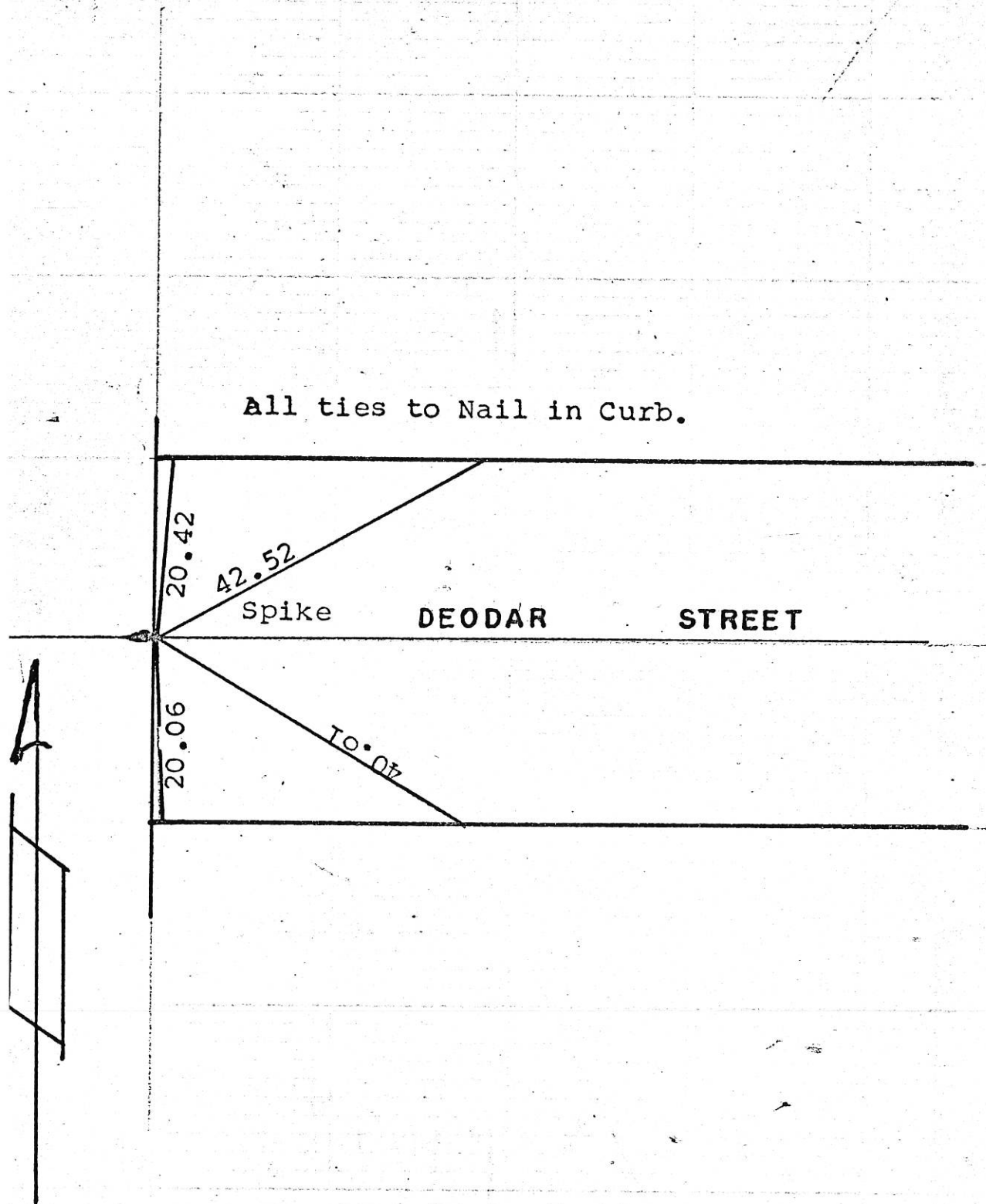
TRACT 5200

3 of 9
NO. 221



J. Richard Newton
L.S. 2386
Jan. 4; 1962

All ties to Nail in Curb.



J. Richard Newton

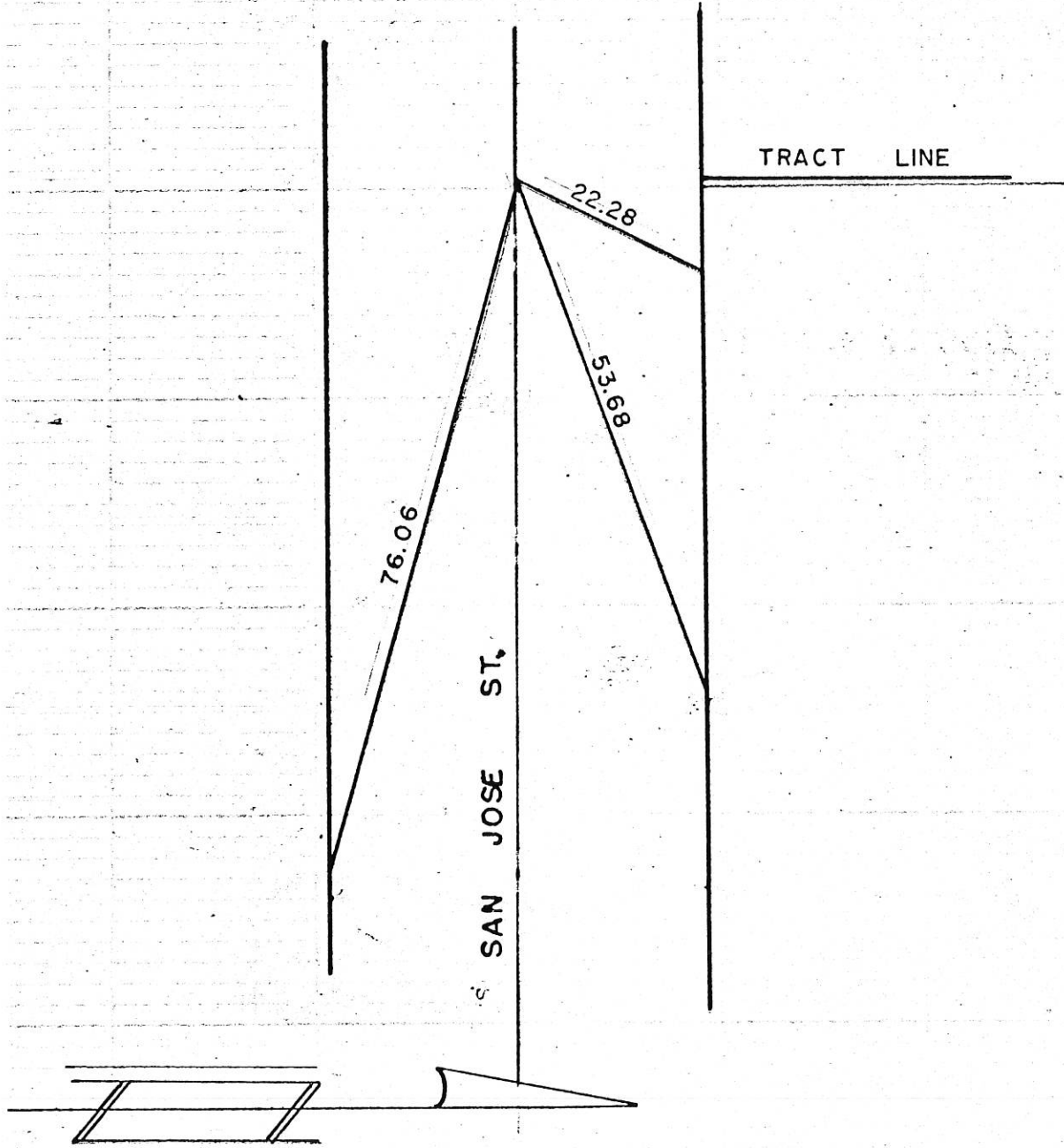
L.S. 2386

Jan. 4, 1962

TRACT 5200

5 of 9

NO. 221



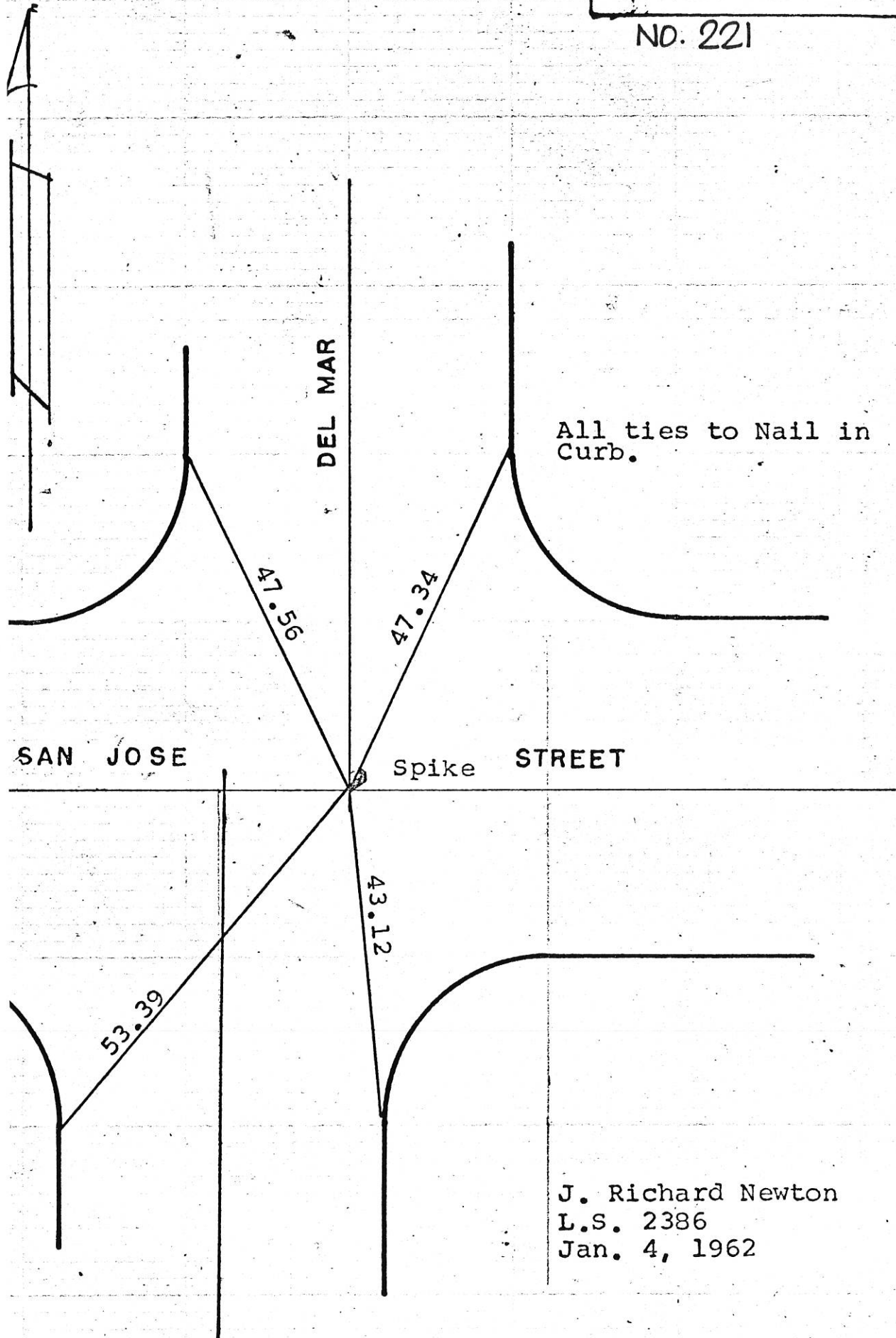
ENGR. LS. 2386

DATE _____

TRACT 5200

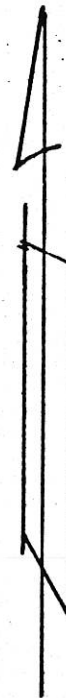
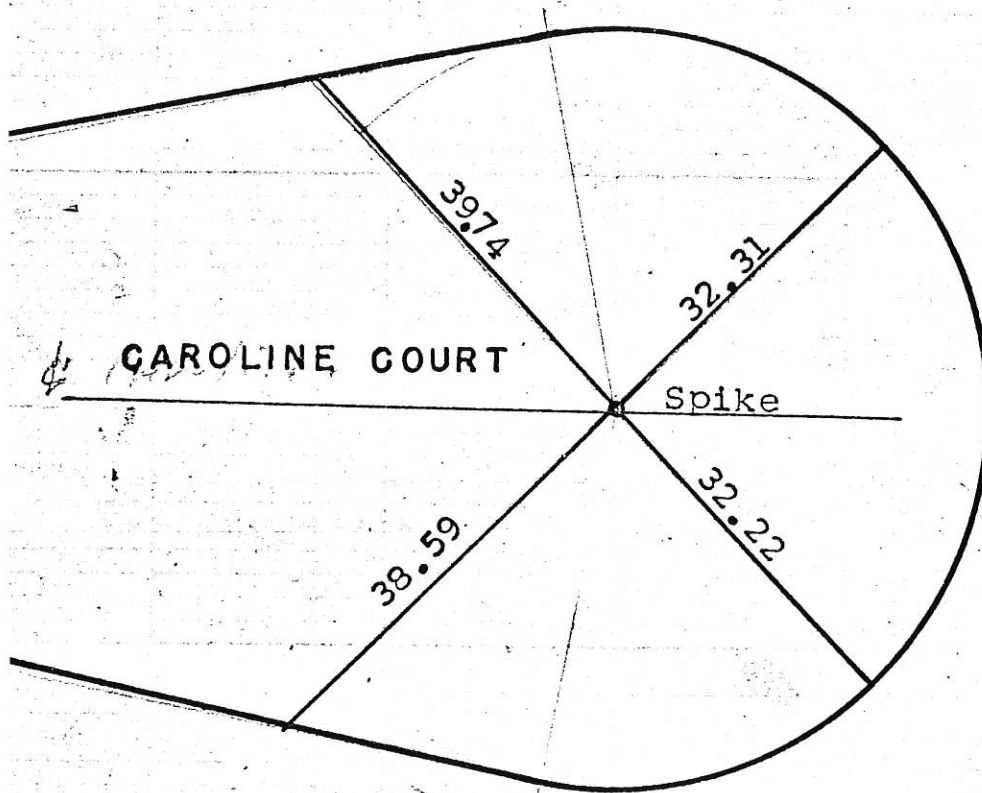
6 of 9

NO. 221



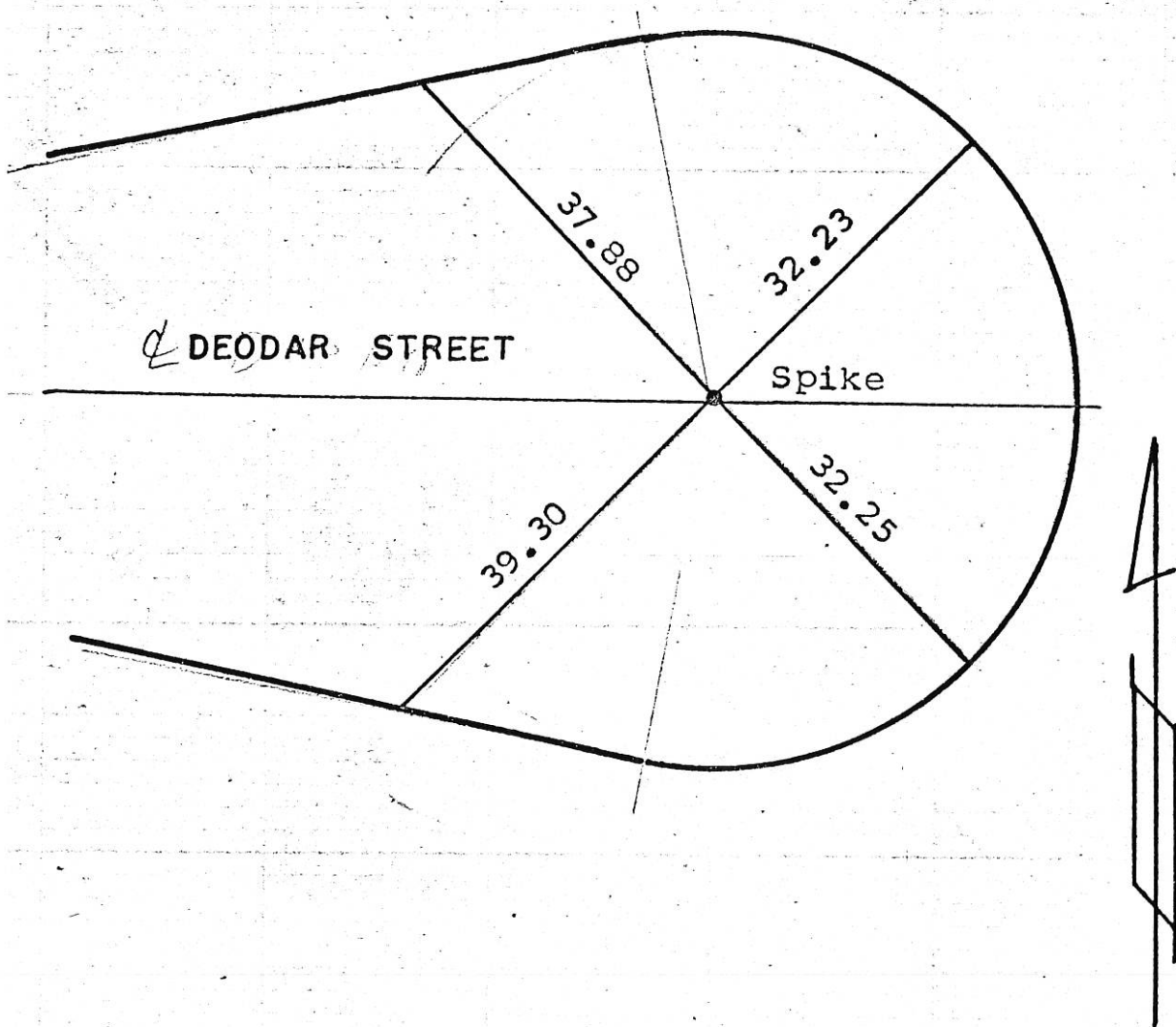
J. Richard Newton
L.S. 2386
Jan. 4, 1962

All ties to Nail in Curb.

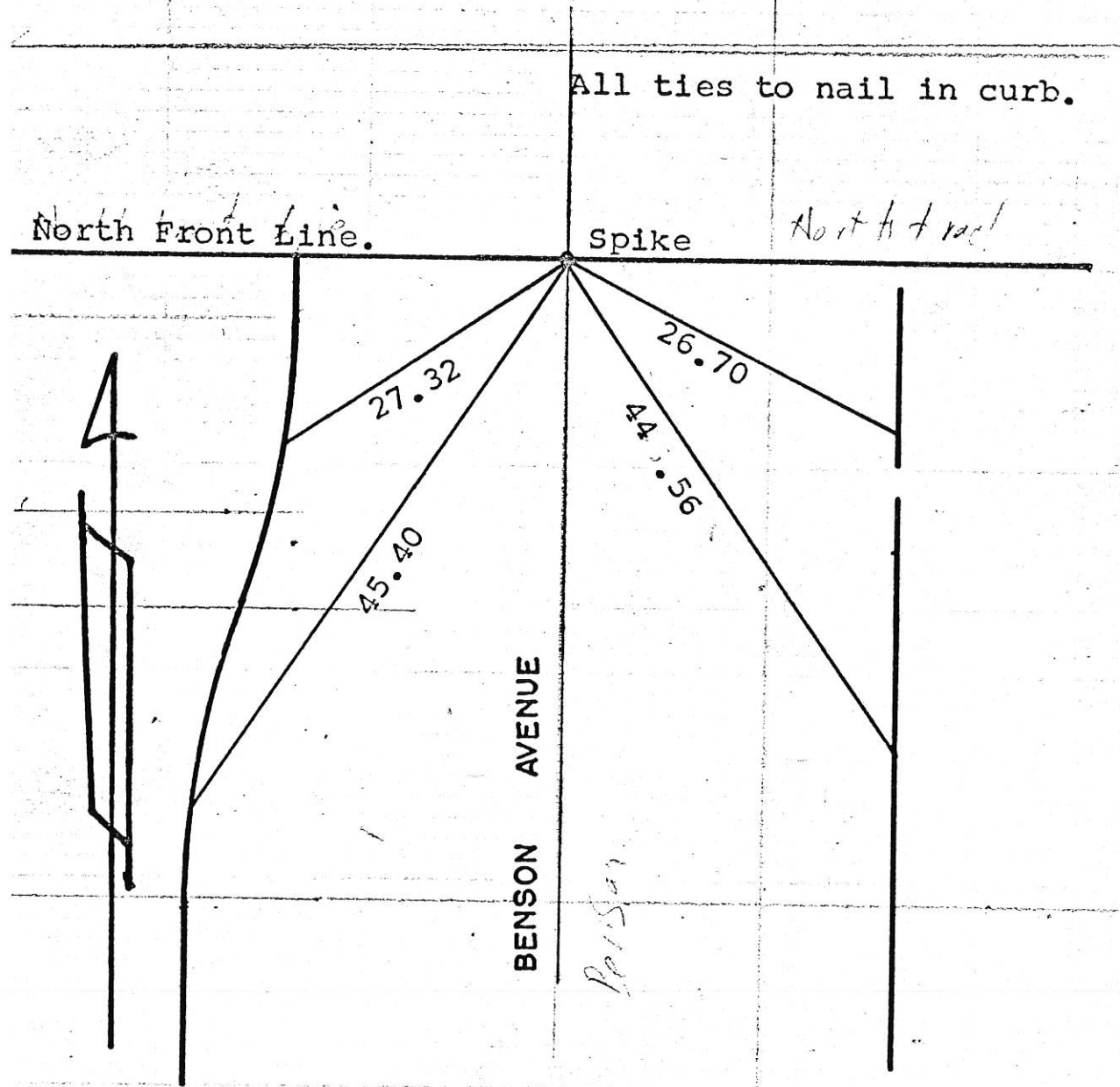


J. Richard Newton
L.S. 2386
Jan. 4, 1962

All ties to Nail in Curb.



J. Richard Newton
L.S. 2386
Jan 4, 1962



J. Richard Newton

L.S. 2386

Jan. 4, 1962