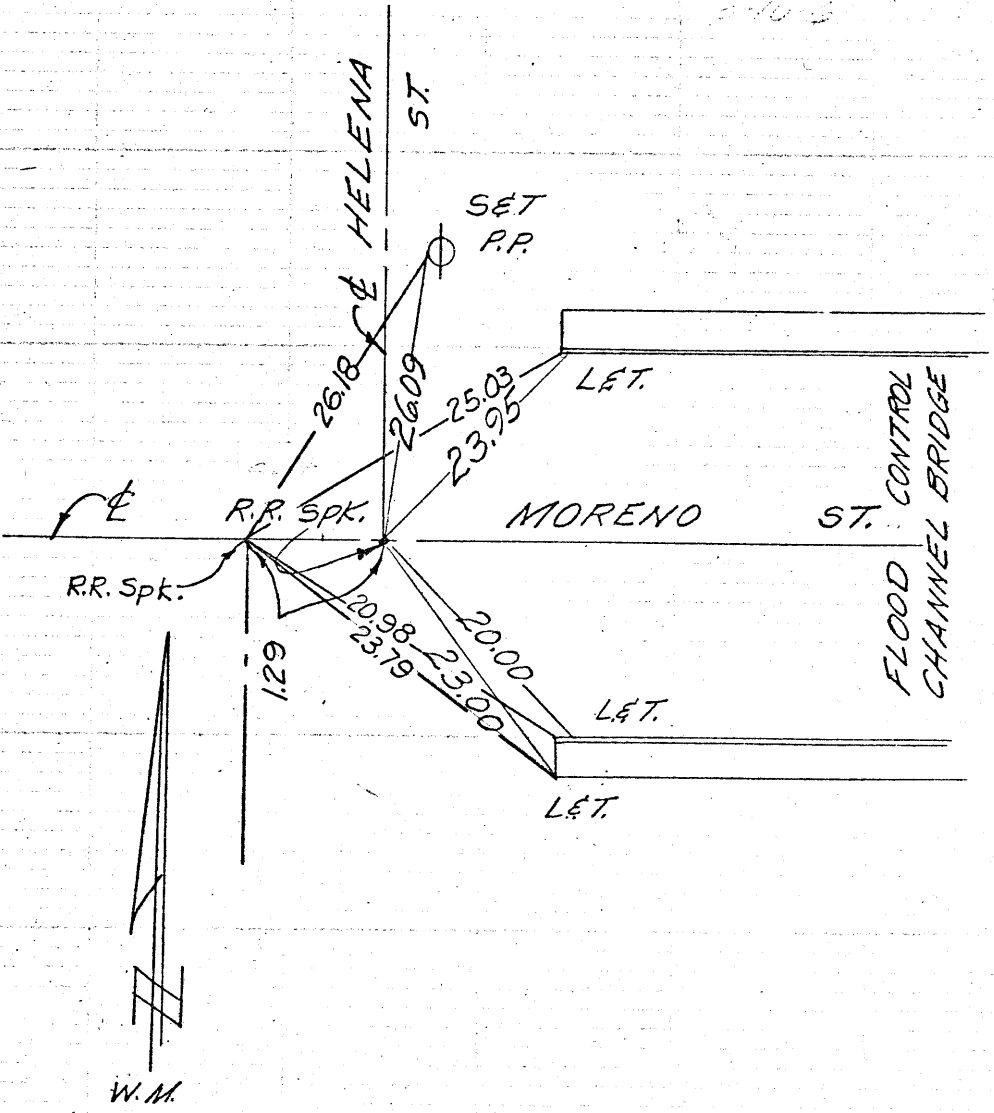


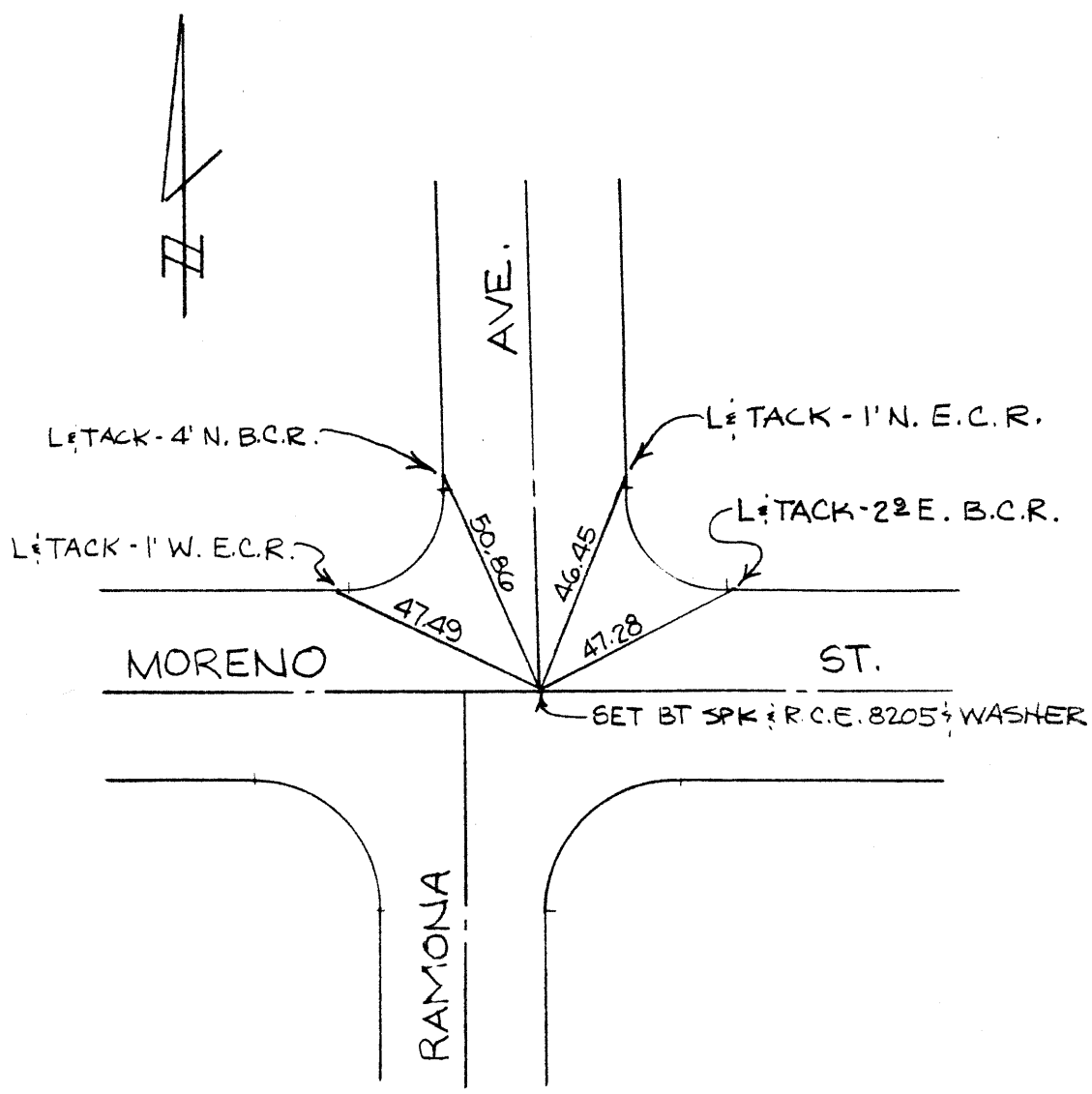
HELENA AVE.
and
MORENO ST.
CITY OF MONTCLAIR

250-A

PLAN
5-10-61

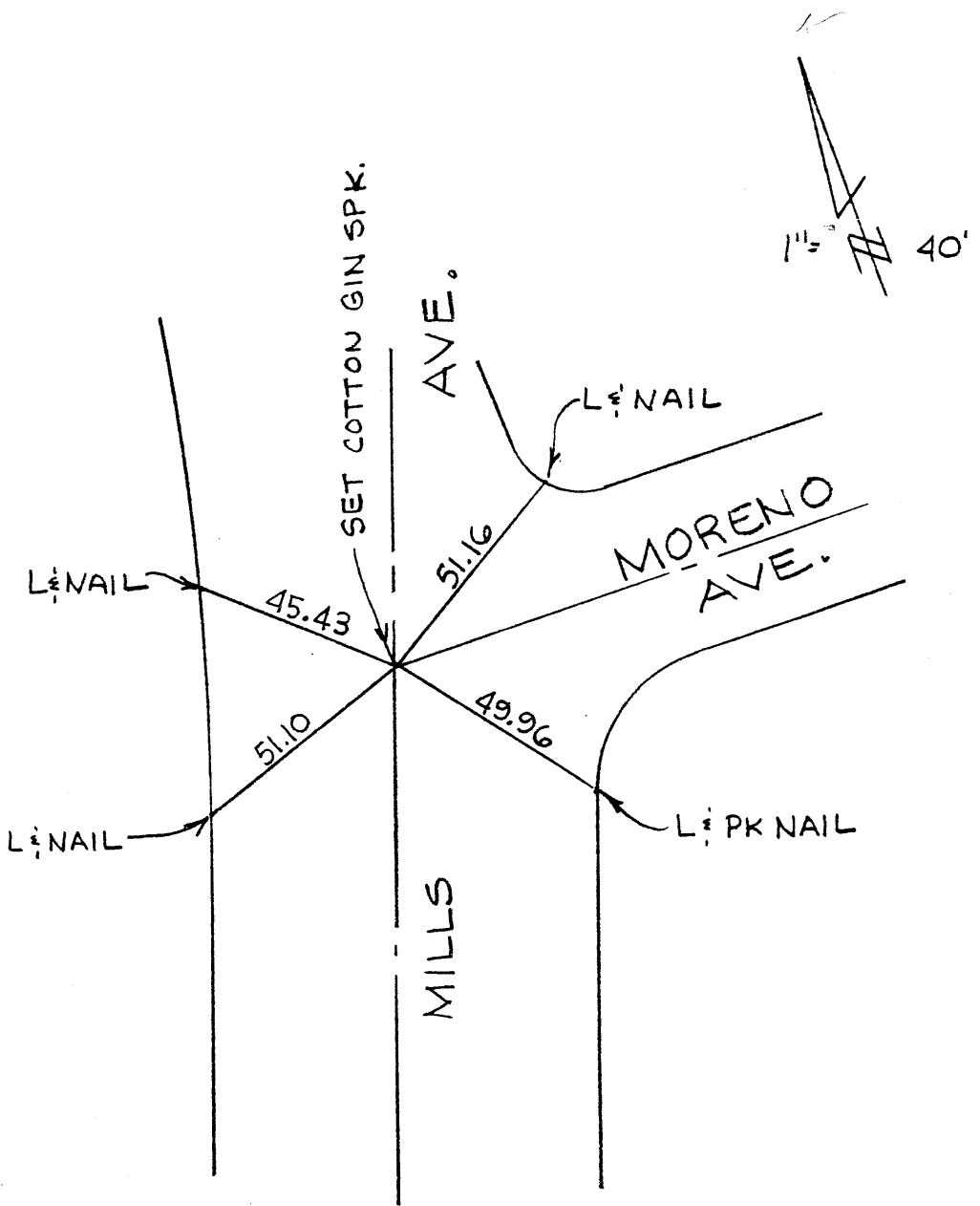


RESET 5-10-61
REVISED 6-16-67

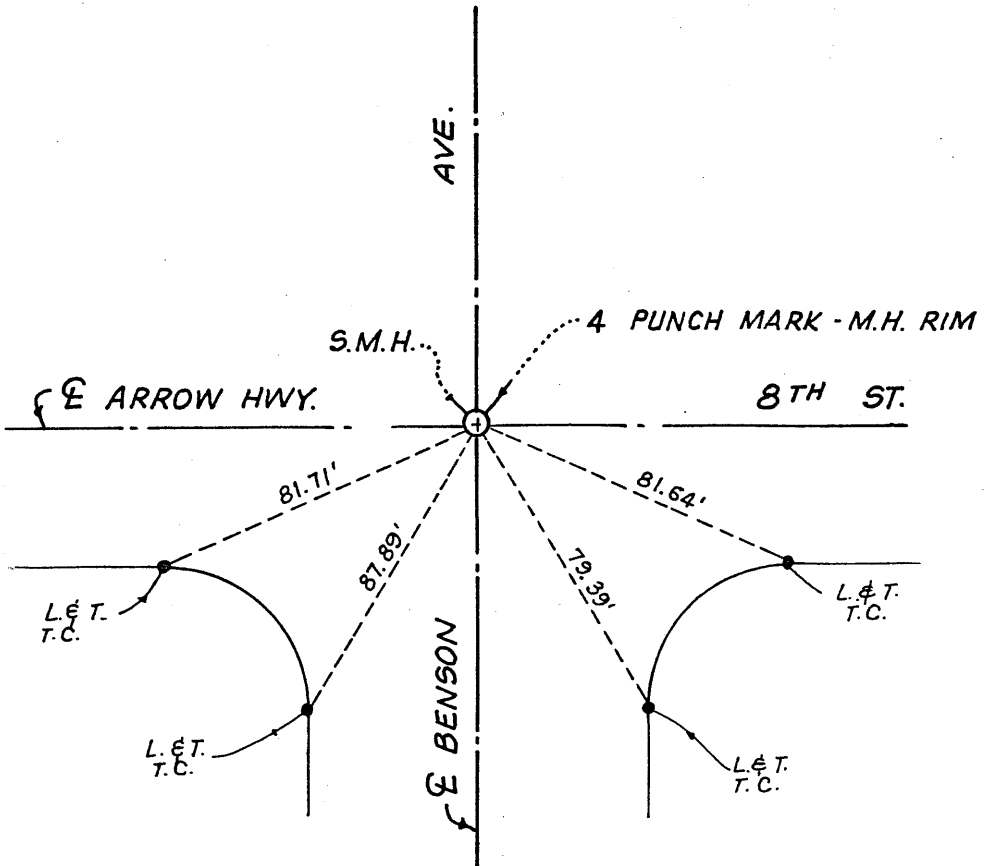


RAMONA AVE. & MORENO ST.

253 A



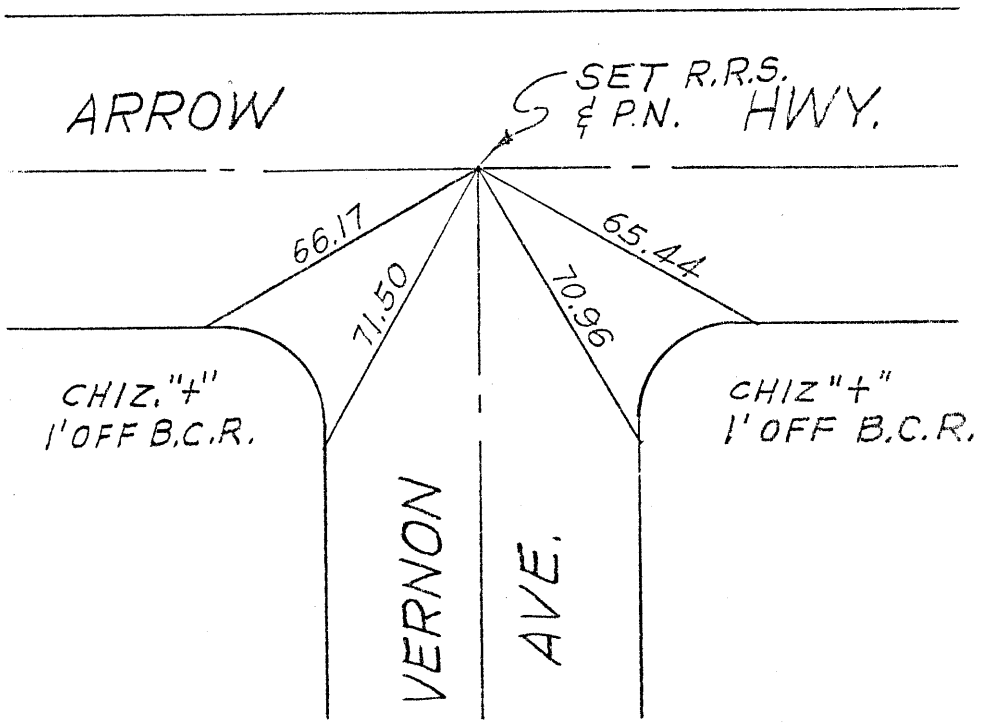
MILLS AVE. $\frac{1}{2}$ MORENO AVE.



CITY OF MONCLAIR

OCT. 1979

262A



ARROW

SET R.R.S.
& P.N. HWY.

66.17

71.50

70.96

65.44

CHIZ "4"
1' OFF B.C.R.

CHIZ "4"
1' OFF B.C.R.

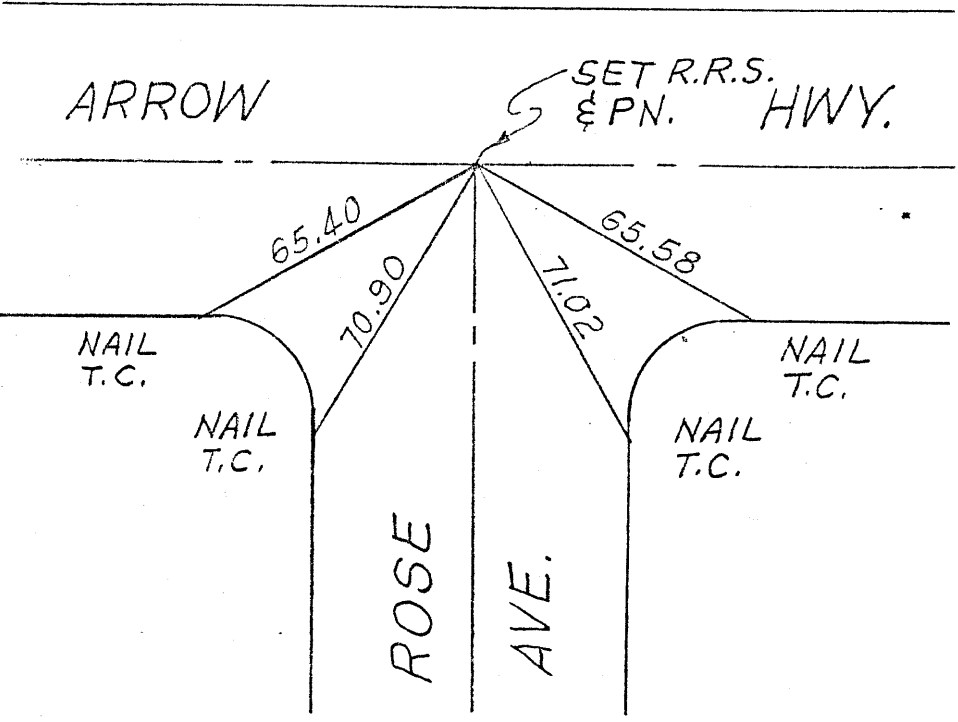
VERNON

AVE.

ARROW HWY. & VERNON AVE.

L.D. KING, INC.
3-4-83

262B



ARROW

SET R.R.S.
& PN. HWY.

65.40

70.90

71.02

65.58

NAIL
T.C.

NAIL
T.C.

NAIL
T.C.

NAIL
T.C.

ROSE

AVE.

ARROW HWY. & ROSE AVE.

L.D. KING, INC.
8-4-83