



AVE.

S.B. CO.
SPK. & TIN
IN P.P. 30' N.
& 25' E. & INT.

FD. 1" I.P. & TAG
"S.B. CO. SURV."

40.90'

GRAND

AVE.

47.69'

44.49'

RAMONA

PK. & LEAD
IN T.C.
1' S. OF B.C.R.

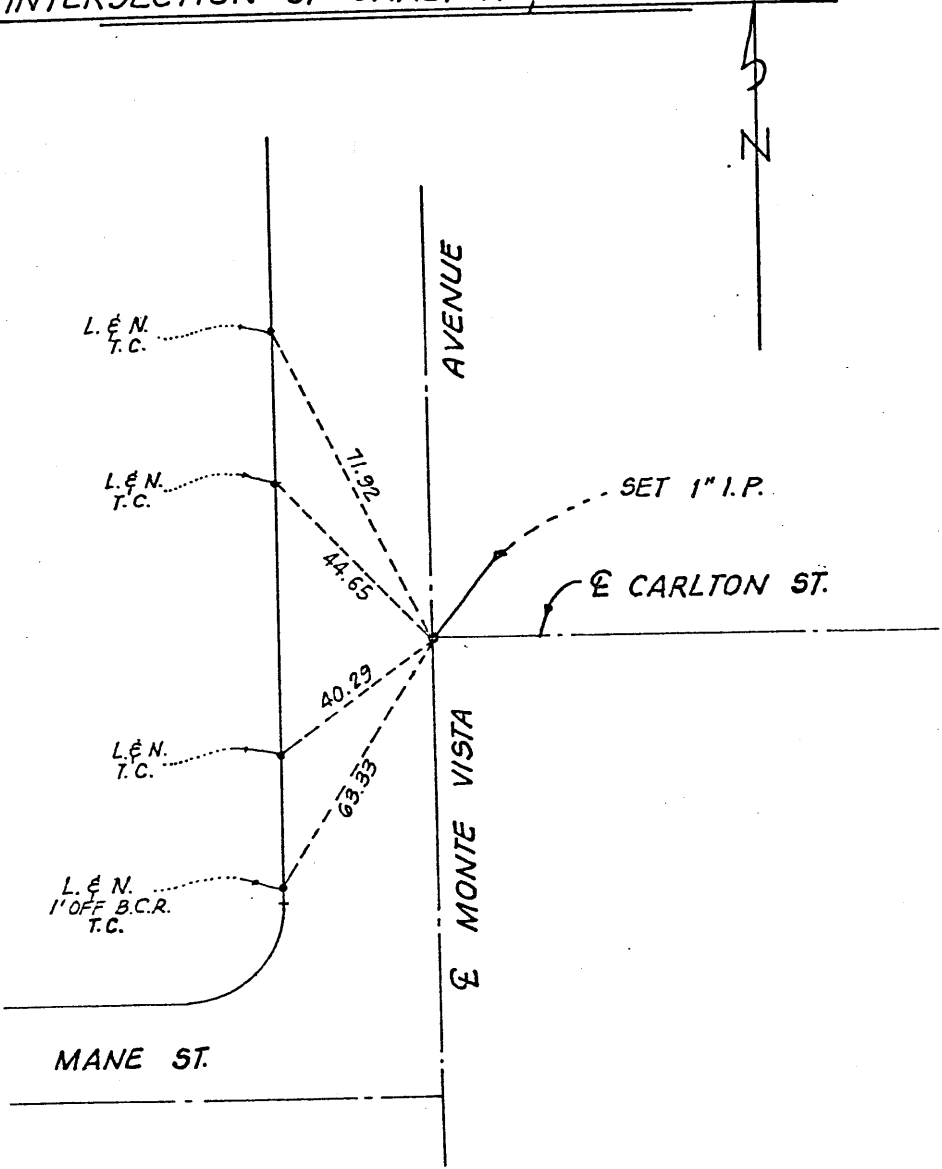
FD. CHIS. +
IN T.C. @
1/2 C.R.

RAMONA AVE. & GRAND AVE.

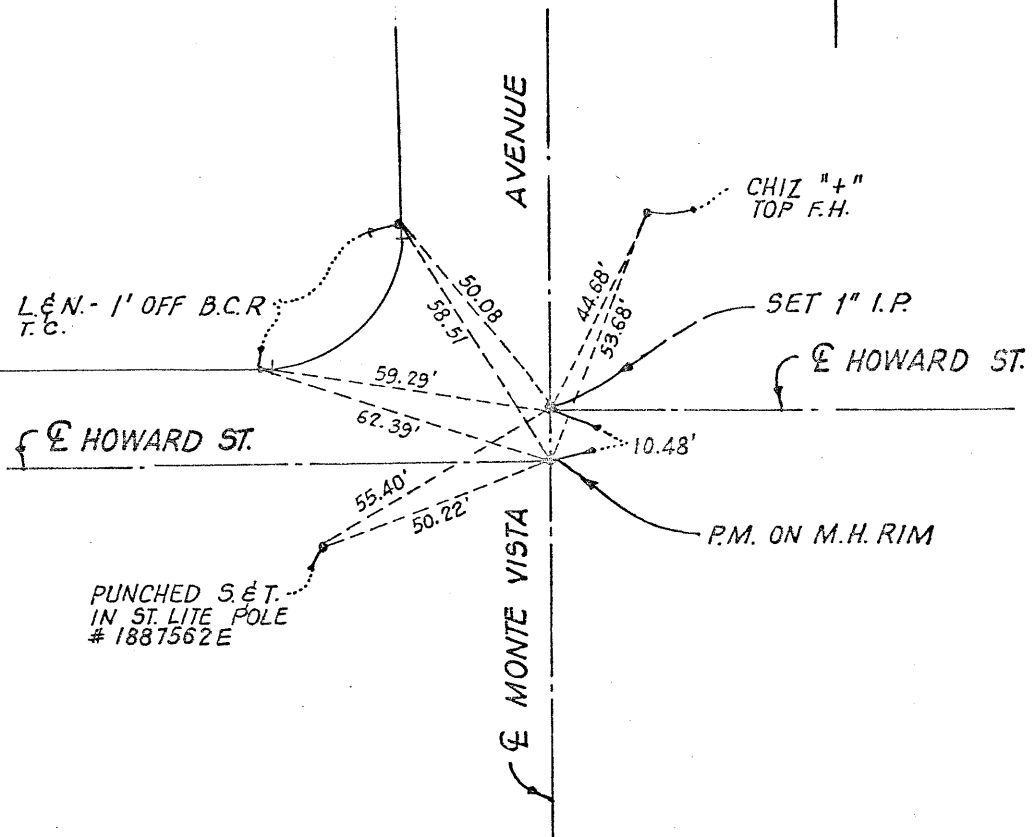
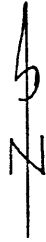
ENGR. *Carl D. Deeman*

DATE: 3-8-71

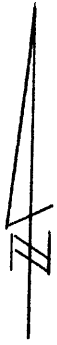
INTERSECTION OF CARLTON & MONTE VISTA



CITY OF MONTCLAIR



CITY OF MONTCLAIR



FD. CHIS X
1° N. OF B.C.R.

FD. L & NAIL
1 1/2° E. OF B.C.R.

HOWARD

ST.

FD. SPK & W.
R.C.E. 8205

SET SPK; W. R.C.E. 8205

65.60

0.64

71.62

62.89

0.27

65.87

FD. CHIS X
0 2/3° OF B.C.R.

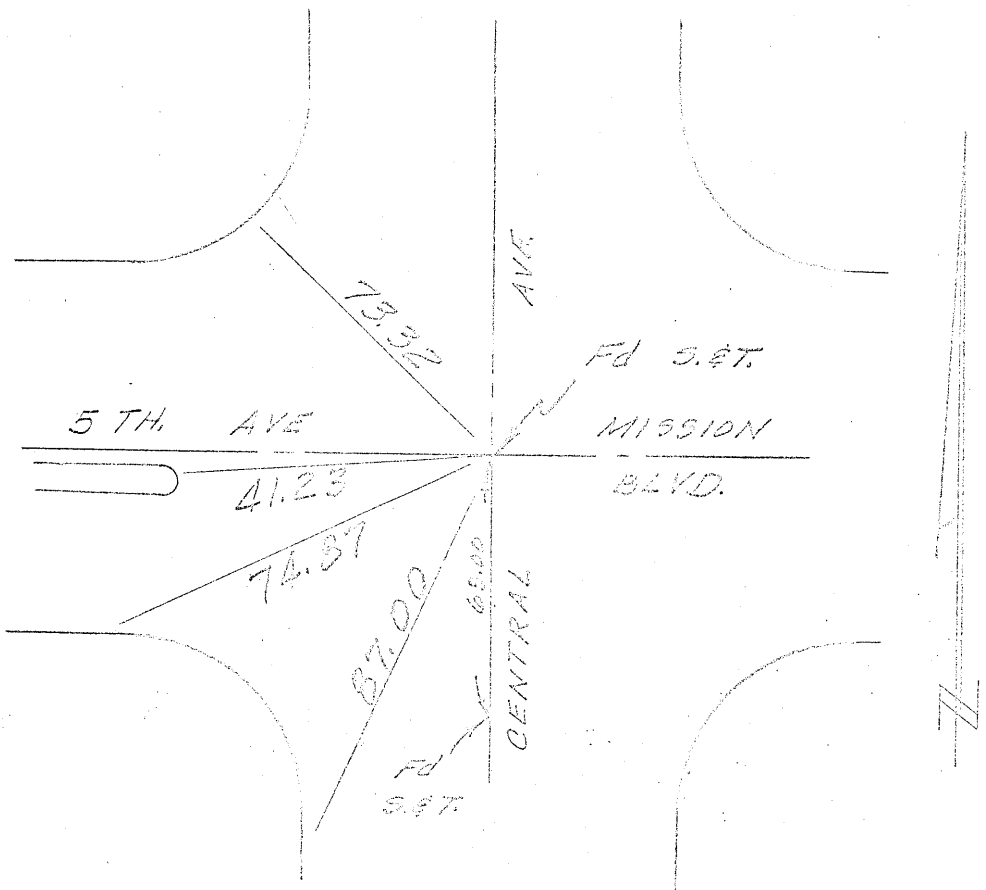
FD L & NAIL
1° S. OF B.C.R.

RAMONA
AVE.

HOWARD ST. & RAMONA AVE

ANDREASEN ENGR. CO
R.C.E. 8205
FEBRUARY 1990

CENTRAL OVERPASS
PROJECT 64-65.11



CENTRAL AVE.
FIFTH AVE.

TIE PTS ARE
CHIZ "4" Fd IN T.O.

MDN. Fd by
Andreasen Eng. Co.
R.C.E. 2265
DEC. 1964