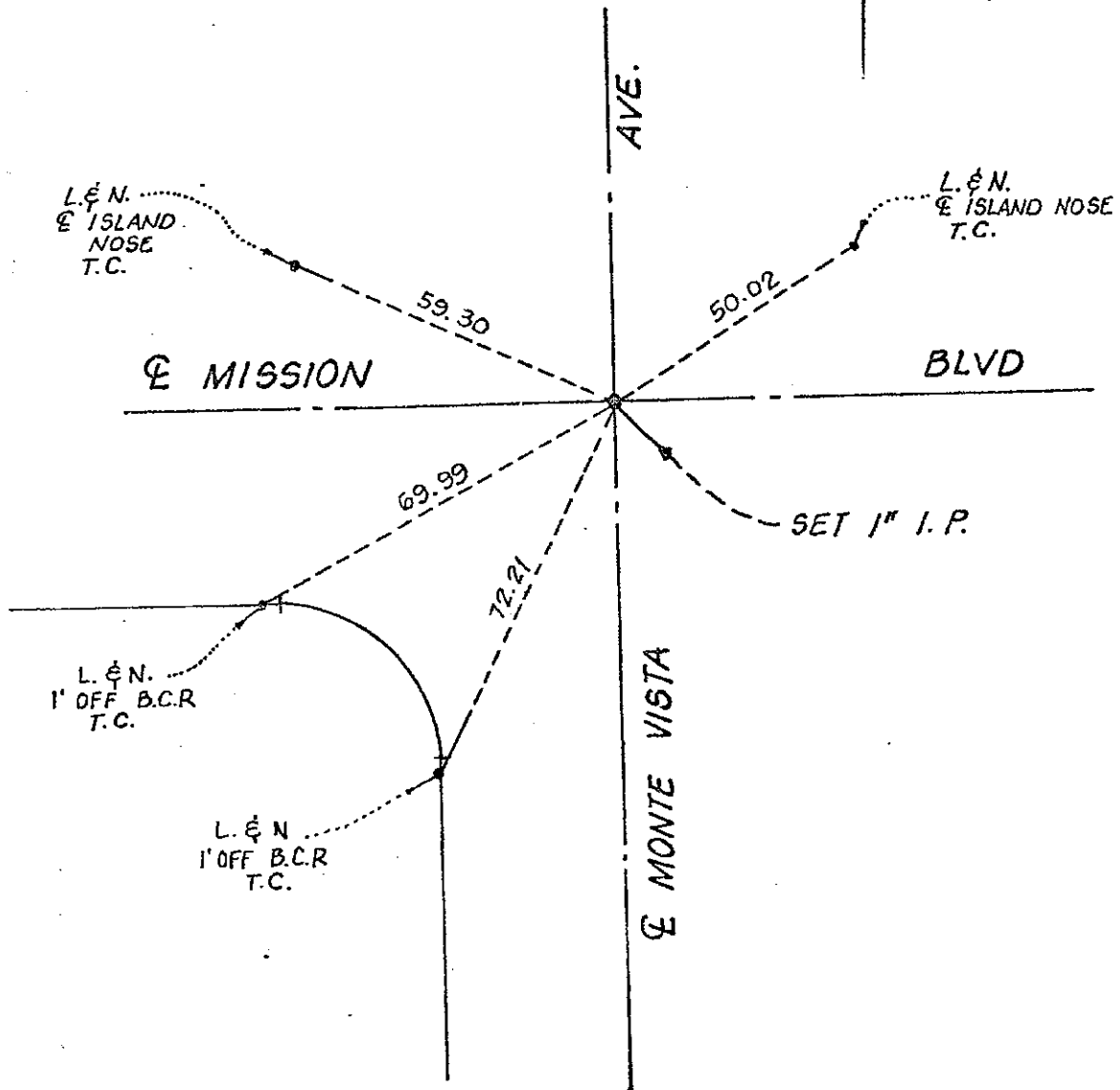


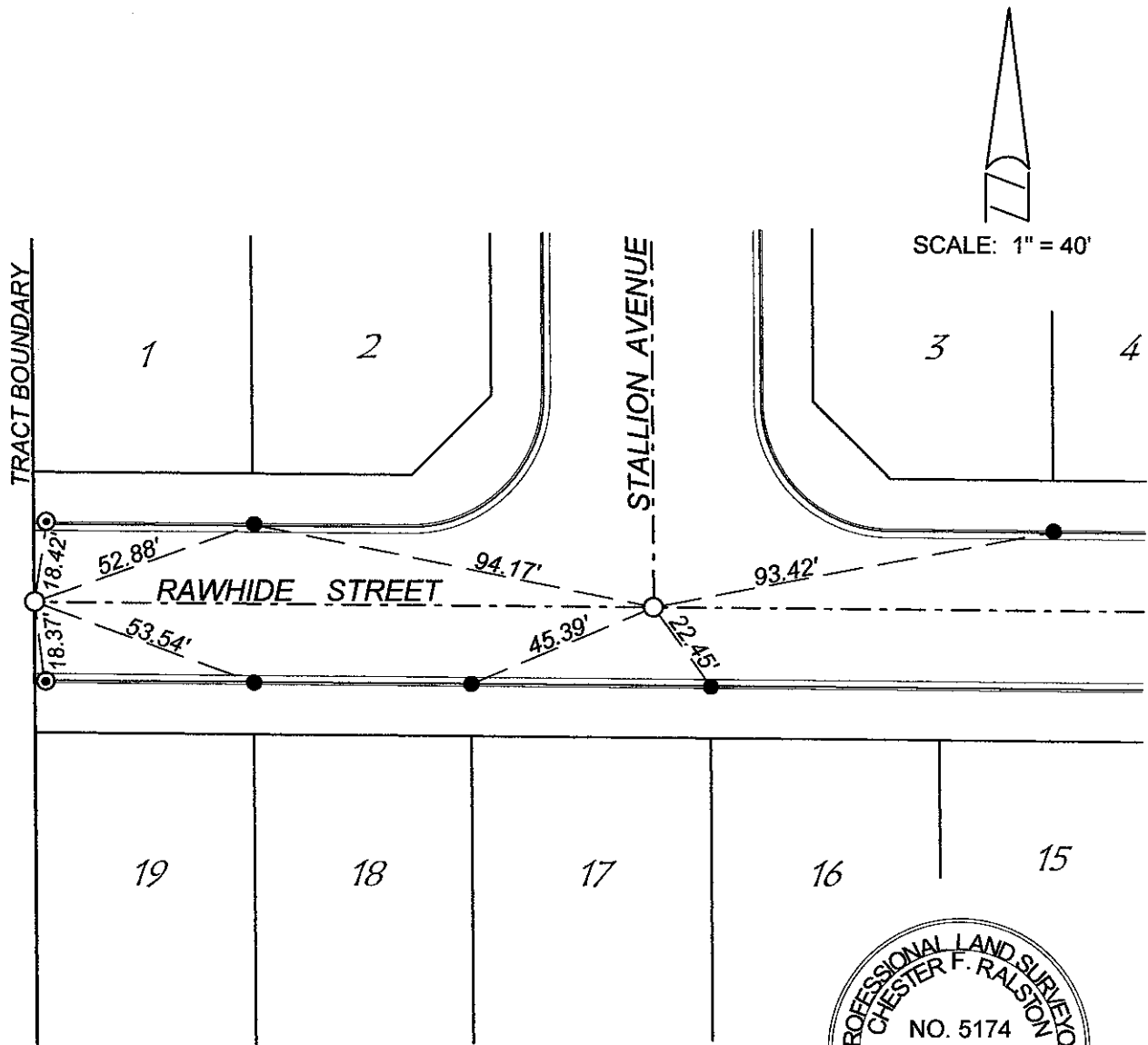
68



CITY OF MONTCLAIR

TRACT 17954

- INDICATES SET 1" IRON PIPE TAGGED LS 5174, 1/4" BELOW FINISH SURFACE.
- INDICATES NAIL & TAG LS 5174 IN TOP OF CURB ON PROLONGATION OF PROPERTY LINE.
- ⊙ INDICATES SET NAIL & TAG LS 5174 R.P. IN TOP OF CURB.



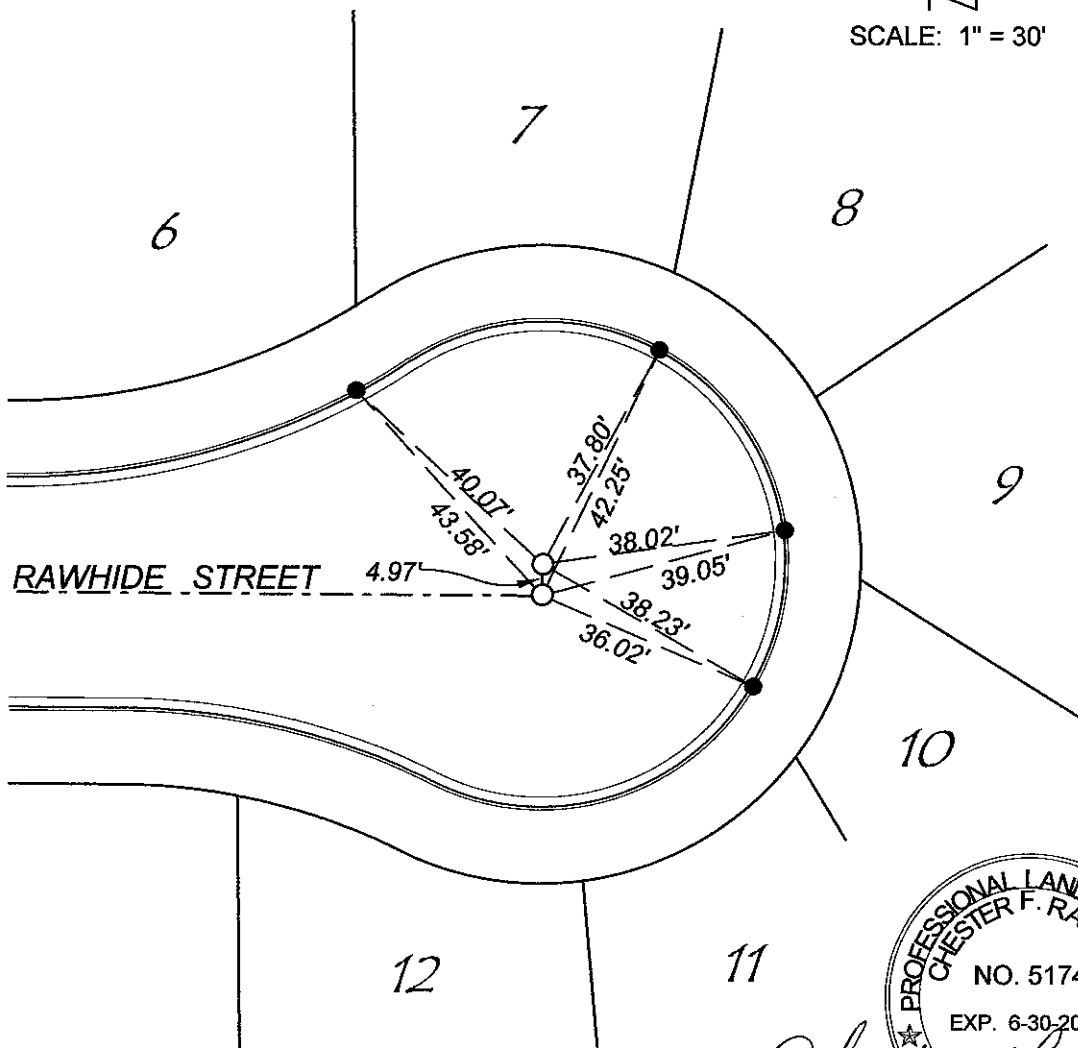
Chester F. Ralston

TRACT 17954

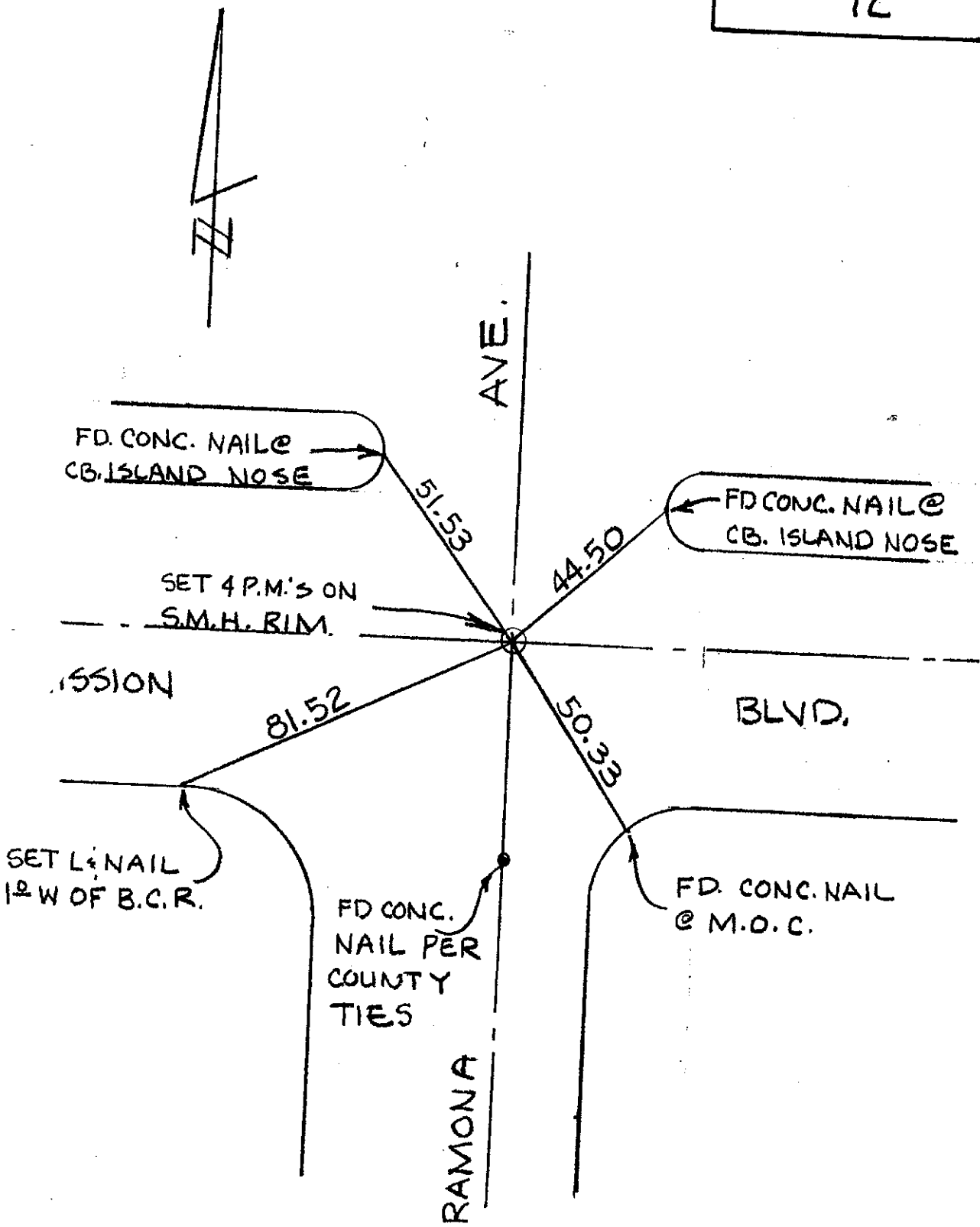
- INDICATES SET 1" IRON PIPE TAGGED LS 5174, 1/4" BELOW FINISH SURFACE.
- INDICATES NAIL & TAG LS 5174 IN TOP OF CURB ON PROLONGATION OF PROPERTY LINE.



SCALE: 1" = 30'



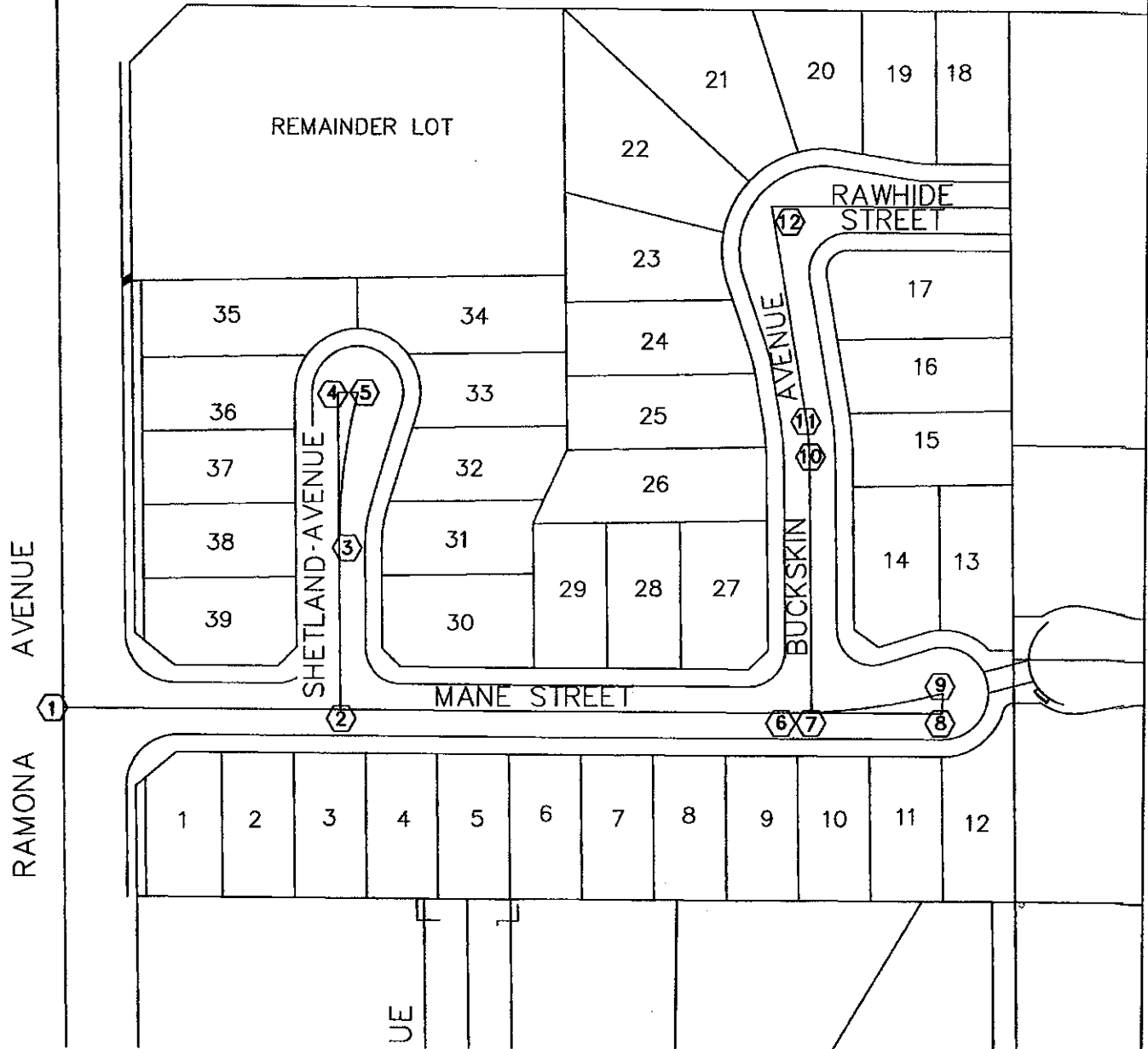
Chester F. Ralston



MISSION BLVD. & RAMONA BLVD.

ANDREASEN ENGR. CO
R.C.E. 8205
FEBRUARY 1990

MISSION



RAMONA AVENUE

REMAINDER LOT

RAWHIDE STREET

SHETLAND AVENUE

BUCKSKIN AVENUE

MANE STREET

UE

NOTE:

INDICATES SHEET NUMBER

CITY OF MONTCLAIR

OCT 18 2005

PUBLIC WORKS DEPARTMENT



Hall & Foreman, Inc.
 Civil Engineering • Planning • Surveying • Public Works
 1152 N. Mountain Ave. Sta. 100 • Upland, CA 91786-3669 • 909-982-7777

CL TIES

JOB NAME: TR16679		DRAWN BY: RLW	CHECKED BY: BKH
LOCATION: MONTCLAIR		SCALE: 1" = NTS'	
DESCRIPTION:		DATE: 8-8-05	
INDEX		JOB # 04100-000	SHT. # OF

RAMONA AVE

39

MANE STREET

47.26'

72.24'

51.33'

83.00'

1

2

MONUMENT NOTES

SYM.	DESCRIPTION
○	SPIKE & WASHER, TAGGED "L.S. 6217"
●	LEAD AND TACK
⊙	LEAD, TACK, AND TAG STAMPED "L.S. 6217"
△	POINT FALLS ON MANHOLE NOTHING SET

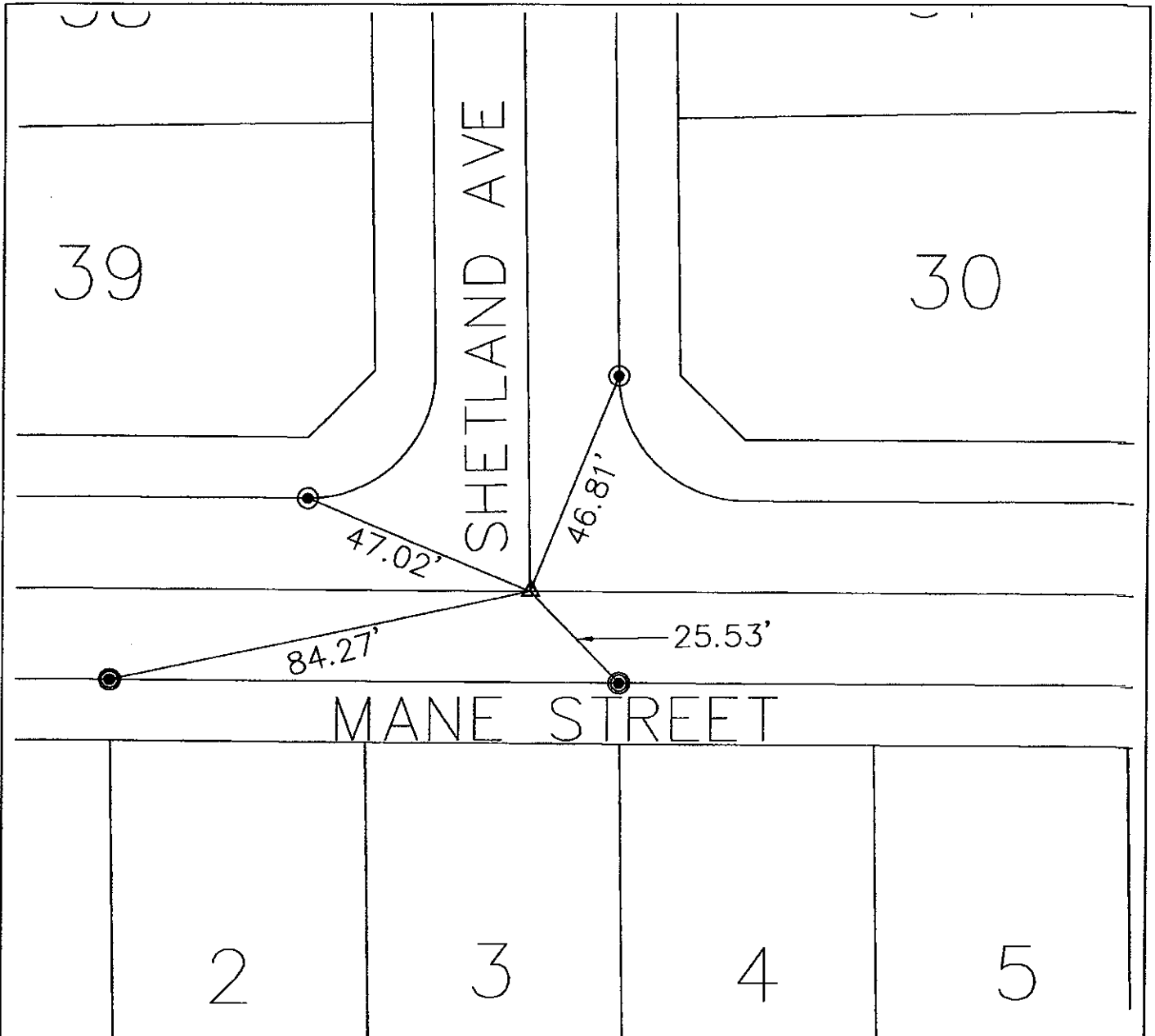


1" = 30'

CL TIES

JOB NAME: TR 16679		DRAWN BY: RLW	CHECKED BY: BKH
LOCATION: MONTCLAIR		SCALE: 1" = 30'	
DESCRIPTION: MANE ST. & RAMONA AVE		DATE: 8-8-05	
		JOB # 04100-000	SHT. # 1 OF 12

Hall & Foreman, Inc.
 Civil Engineering · Planning · Surveying · Public Works
 1152 N. Mountain Ave. Ste. 100 · Upland, CA 91786-3669 · 909-682-7777



MONUMENT NOTES

SYM.	DESCRIPTION
○	SPIKE & WASHER, TAGGED "L.S. 6217"
●	LEAD AND TACK
⊙	LEAD, TACK, AND TAG STAMPED "L.S. 6217"
△	POINT FALLS ON MANHOLE NOTHING SET

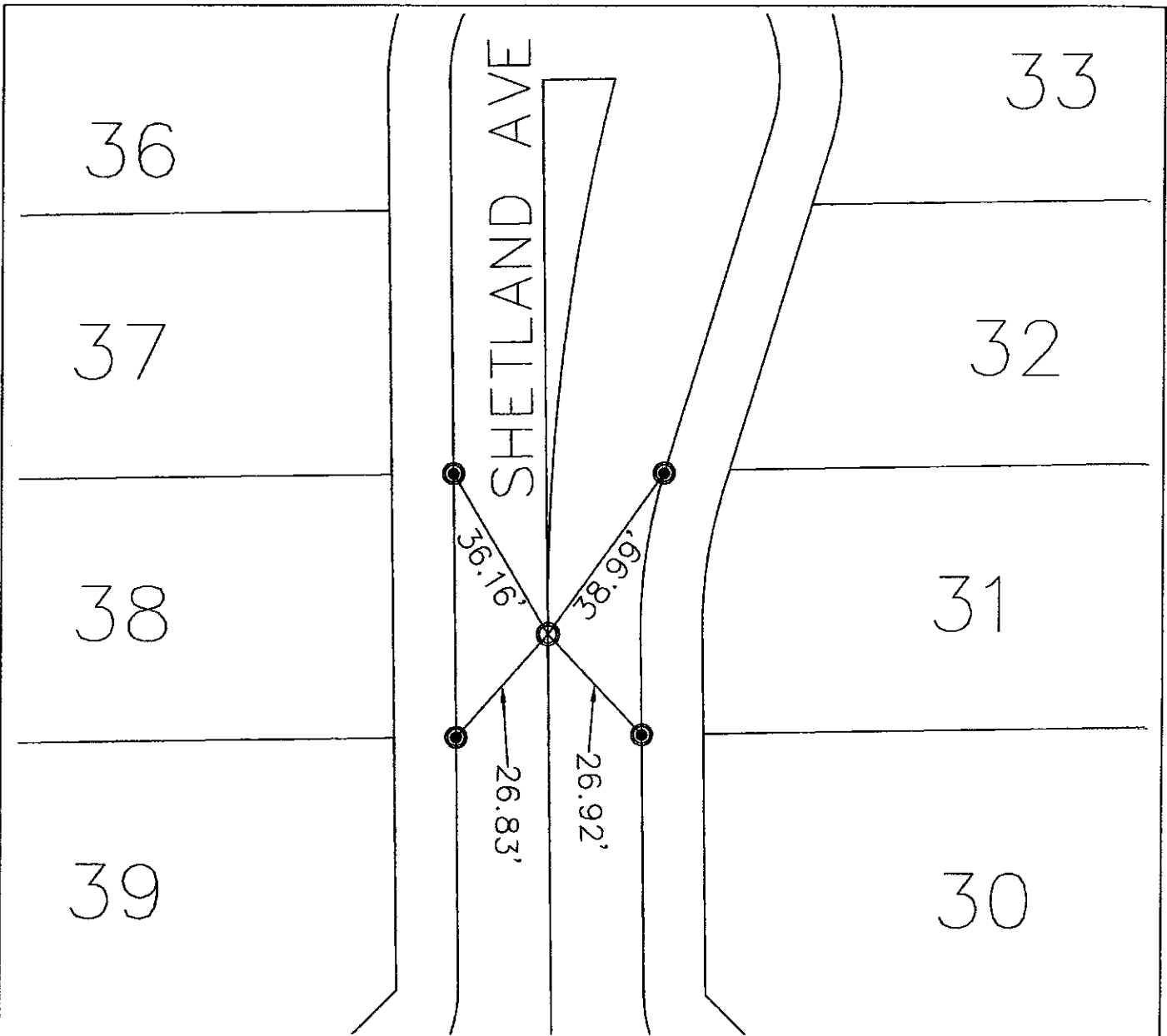


1" = 30'

CL TIES

JOB NAME: TR 16679		DRAWN BY: RLW	CHECKED BY: BKH
LOCATION: MONTCLAIR		SCALE: 1" = 30'	
DESCRIPTION: MANE ST. & SHETLAND AVE		DATE: 8-8-05	
		JOB # 04100-000	SHT. # 2 OF 12

Hall & Foreman, Inc.
 Civil Engineering • Planning • Surveying • Public Works
 1152 N. Mountain Ave. Ste. 100 - Upland, CA 91786-3669 • 909-982-7777

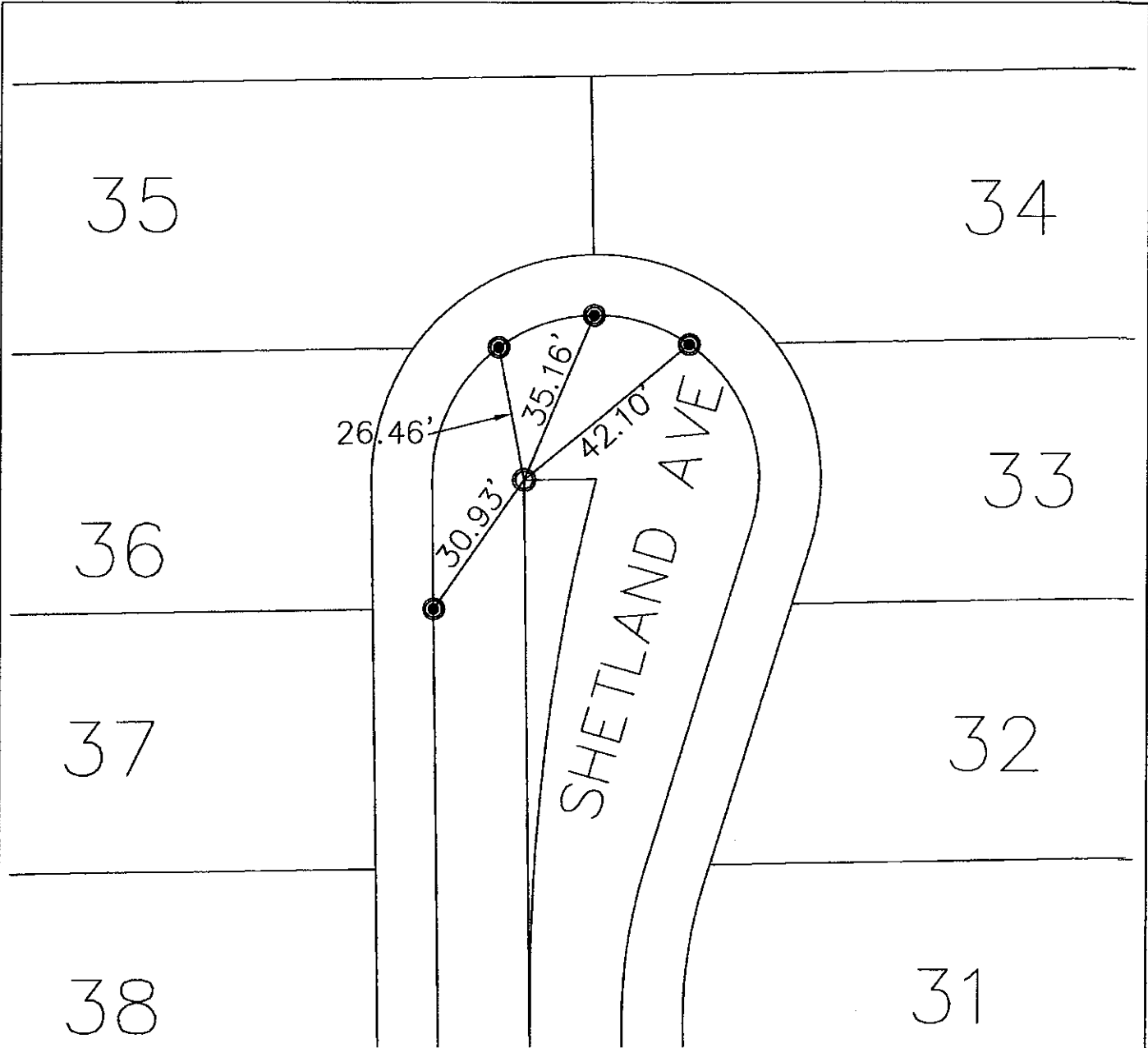


MONUMENT NOTES

SYM.	DESCRIPTION
○	SPIKE & WASHER, TAGGED "L.S. 6217"
●	LEAD AND TACK
⊙	LEAD, TACK, AND TAG STAMPED "L.S. 6217"
△	POINT FALLS ON MANHOLE NOTHING SET



CL TIES			
JOB NAME: TR 16679		DRAWN BY: RLW	CHECKED BY: BKH
LOCATION: MONTCLAIR		SCALE: 1" = 30'	
DESCRIPTION: SHETLAND		DATE: 8-8-05	
		JOB # 04100-000	SHT. # 3 OF 12



MONUMENT NOTES

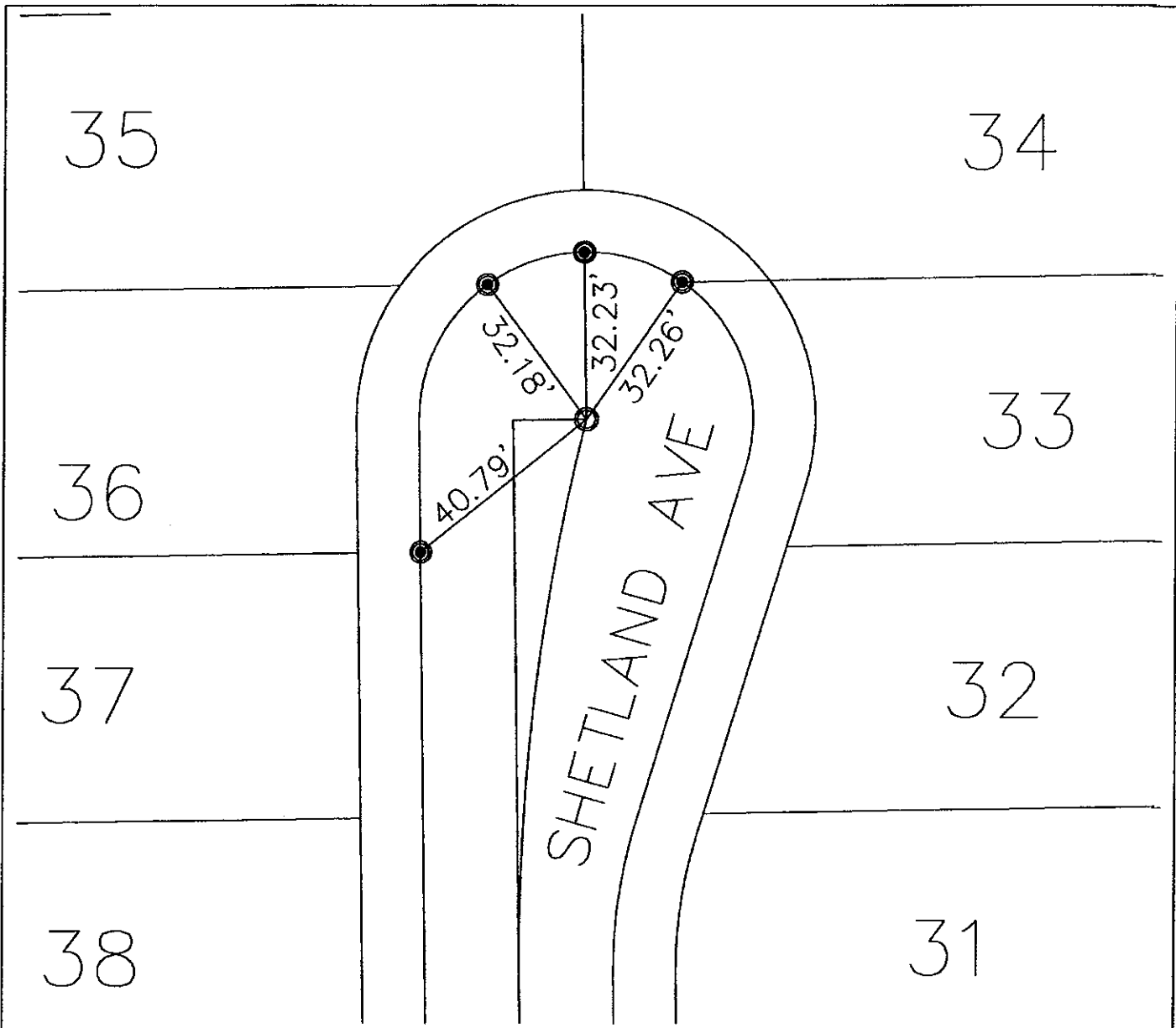
SYM.	DESCRIPTION
○	SPIKE & WASHER, TAGGED "L.S. 6217"
●	LEAD AND TACK
⊙	LEAD, TACK, AND TAG STAMPED "L.S. 6217"
△	POINT FALLS ON MANHOLE NOTHING SET



1" = 30'

CL TIES		
JOB NAME: TR 16679	DRAWN BY: RLW	CHECKED BY: BKH
LOCATION: MONTCLAIR	SCALE: 1" = 30'	
DESCRIPTION:	DATE: 8-8-05	
SHETLAND AVE	JOB # 04100-000	SHT. # 4 OF 12

Hall & Foreman, Inc.
 Civil Engineering - Planning - Surveying - Public Works
 1152 N. Mountain Ave. Ste. 100 • Upland, CA 91786-3669 • 909-982-7777



MONUMENT NOTES

SYM.	DESCRIPTION
○	SPIKE & WASHER, TAGGED "L.S. 6217"
●	LEAD AND TACK
⊙	LEAD, TACK, AND TAG STAMPED "L.S. 6217"
△	POINT FALLS ON MANHOLE NOTHING SET

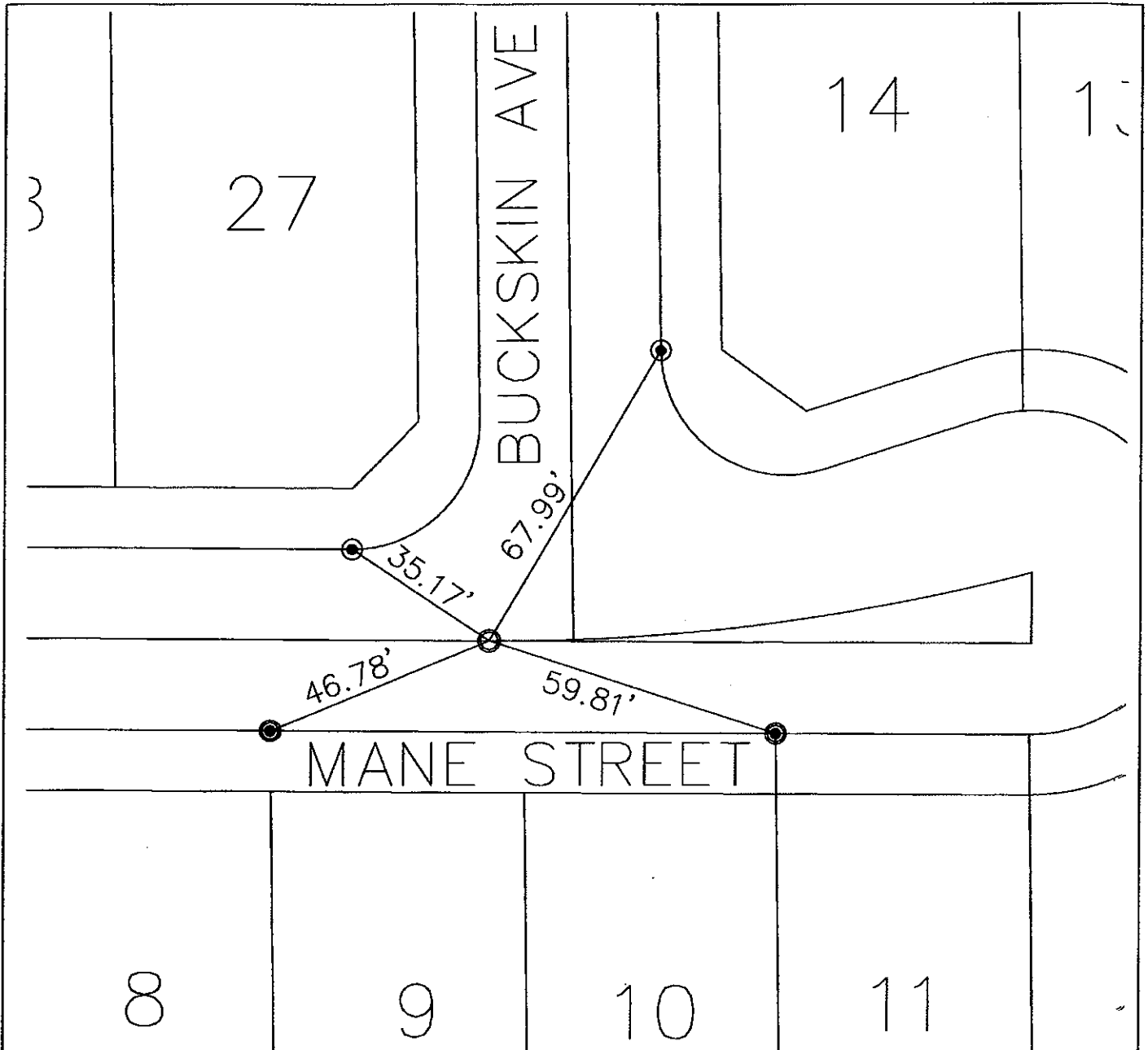
CL TIES

JOB NAME: TR 16679	DRAWN BY: RLW	CHECKED BY: BKH
LOCATION: MONTCLAIR	SCALE: 1" = 30'	
DESCRIPTION:	DATE: 8-8-05	
SHETLAND	JOB # 04100-000	SHT. # 5 OF 12



1" = 30'

Hall & Foreman, Inc.
 Civil Engineering • Planning • Surveying • Public Works
 1152 N. Mountain Ave. Sta. 100 • Upland, CA 91786-3669 • 909-982-7777



MONUMENT NOTES

SYM.	DESCRIPTION
○	SPIKE & WASHER, TAGGED "L.S. 6217"
●	LEAD AND TACK
⊙	LEAD, TACK, AND TAG STAMPED "L.S. 6217"
△	POINT FALLS ON MANHOLE NOTHING SET

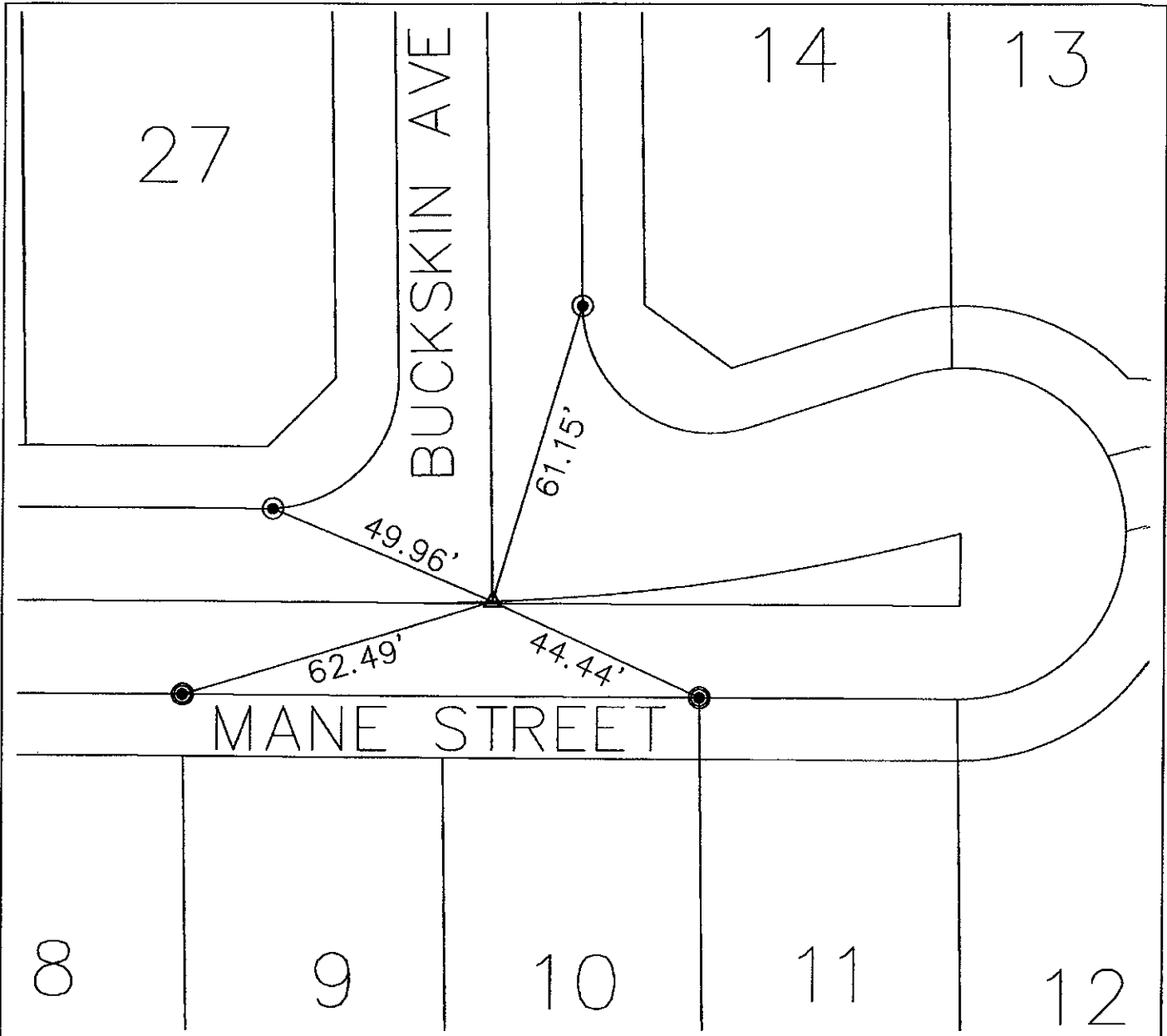


1" = 30'

CL TIES

JOB NAME: TR 16679		DRAWN BY: RLW	CHECKED BY: BKH
LOCATION: MONTCLAIR		SCALE: 1" = 30'	
DESCRIPTION: MANE STREET		DATE: 8-8-05	
		JOB # 04100-000	SHT. # 6 OF 12

Hall & Foreman, Inc.
 Civil Engineering • Planning • Surveying • Public Works
 1152 N. Mountain Ave. Ste. 100 • Upland, CA 91786-3669 • 909-982-7777



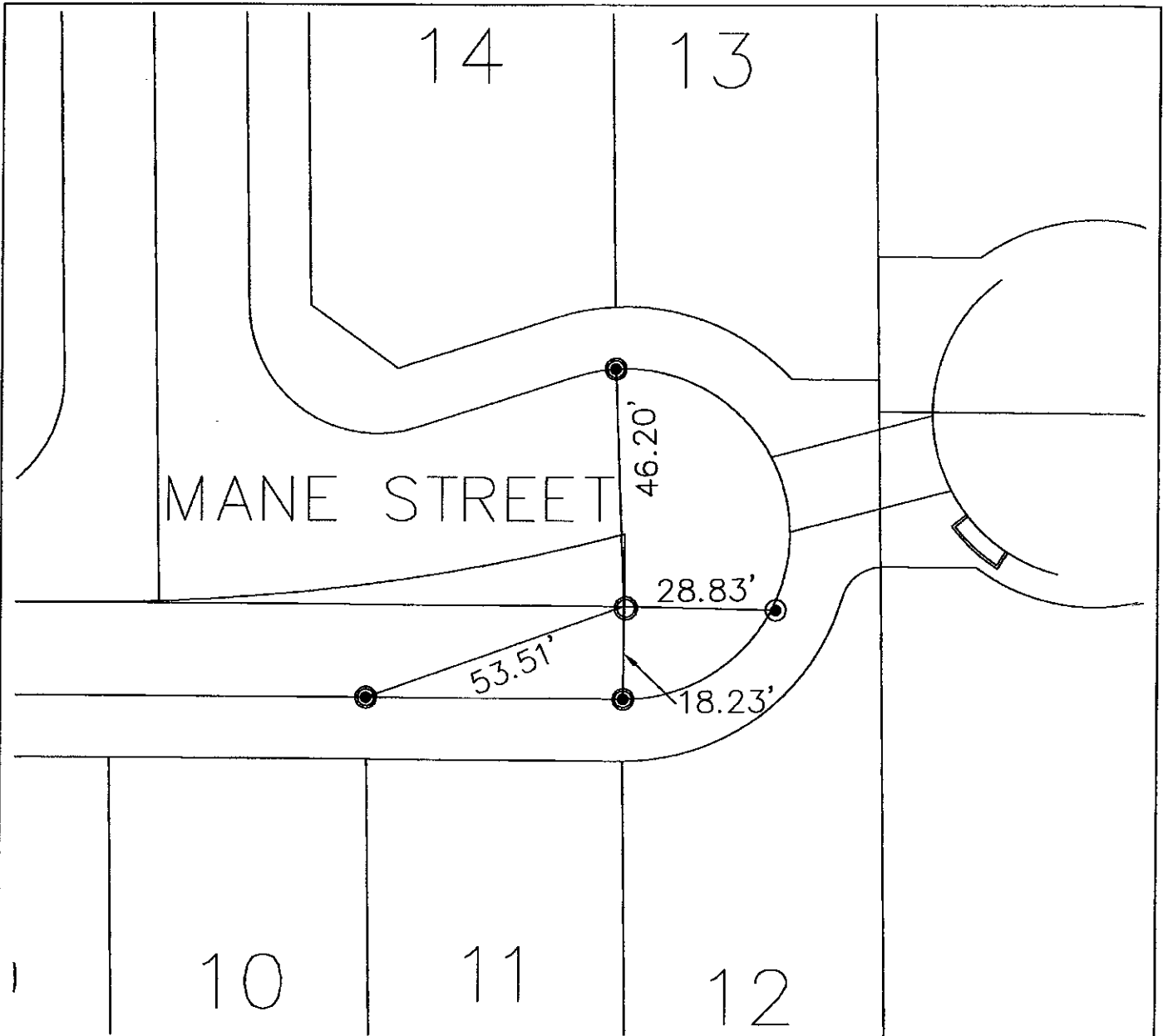
MONUMENT NOTES

SYM.	DESCRIPTION
⊙	SPIKE & WASHER, TAGGED "L.S. 6217"
●	LEAD AND TACK
⊙	LEAD, TACK, AND TAG STAMPED "L.S. 6217"
△	POINT FALLS ON MANHOLE NOTHING SET



CL TIES			
JOB NAME: TR 16679		DRAWN BY: RLW	CHECKED BY: BKH
LOCATION: MONTCLAIR		SCALE: 1" = 30'	
DESCRIPTION: MANE ST. & BUCKSKIN AVE.		DATE: 8-8-05	
		JOB # 04100-000	SHT. # 7 OF 12

Hall & Foreman, Inc.
 Civil Engineering - Planning - Surveying - Public Works
 1152 N. Mountain Ave. Ste. 100 - Upland, CA 91786-3669 • 909-982-7777

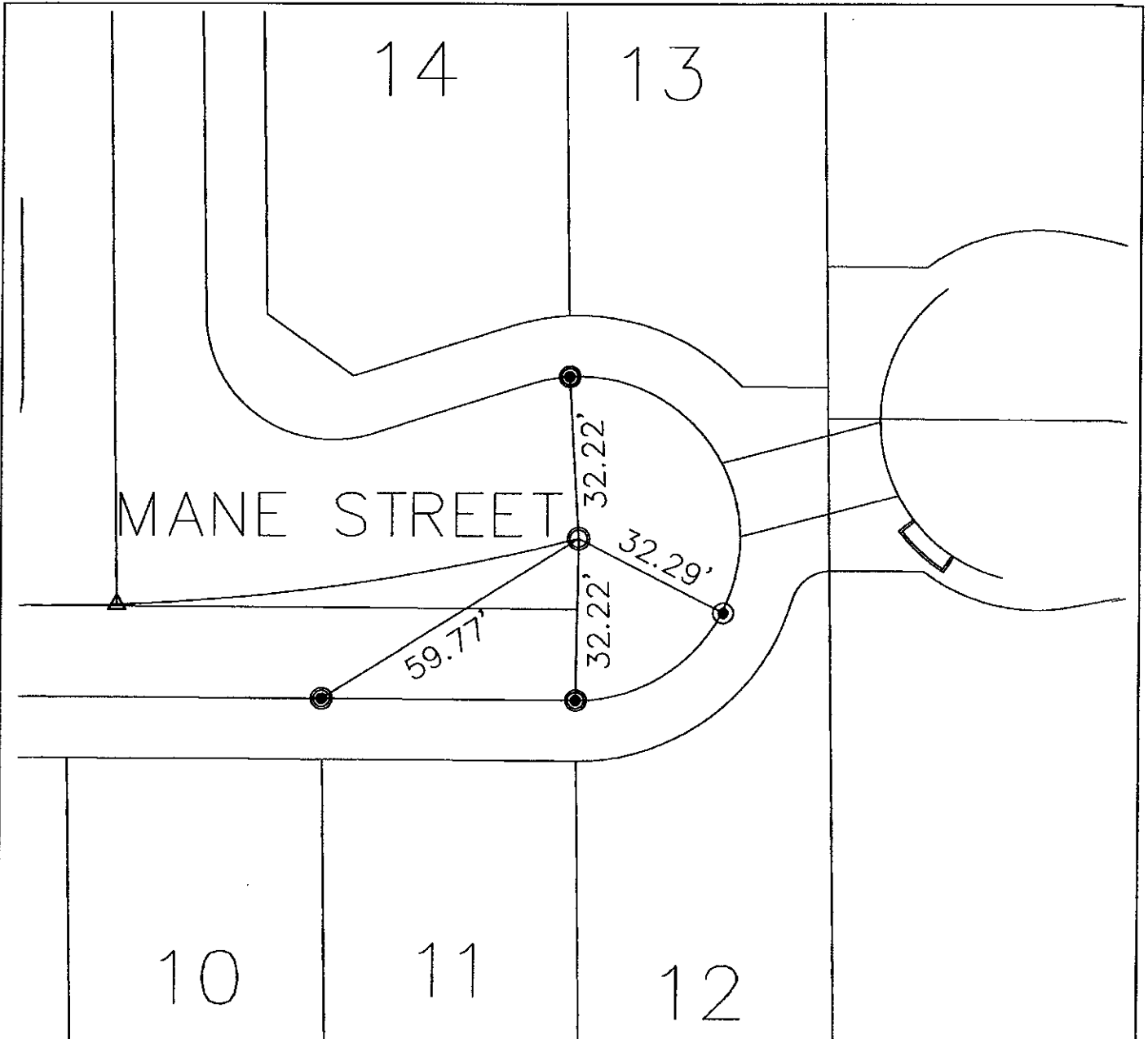


MONUMENT NOTES

SYM.	DESCRIPTION
○	SPIKE & WASHER, TAGGED "L.S. 6217"
●	LEAD AND TACK
⊙	LEAD, TACK, AND TAG STAMPED "L.S. 6217"
△	POINT FALLS ON MANHOLE NOTHING SET



CL TIES		
JOB NAME: TR16679	DRAWN BY: RLW	CHECKED BY: BKH
LOCATION: MONTCLAIR	SCALE: 1" = 30'	
DESCRIPTION: MANE STREET	DATE: 8-8-05	
	JOB # 04100-000	SHT. # 8 OF 12



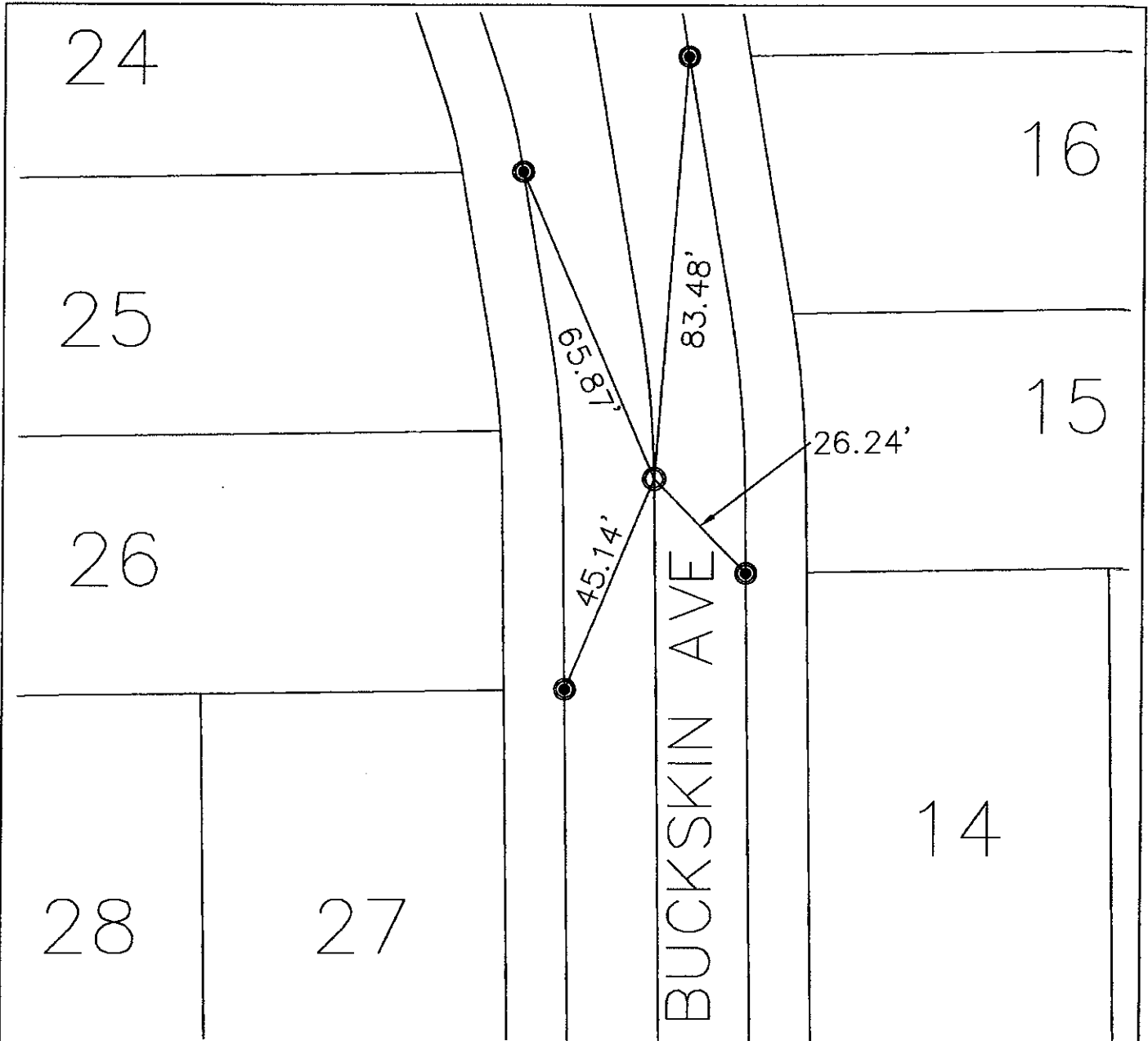
MONUMENT NOTES

SYM.	DESCRIPTION
⊙	SPIKE & WASHER, TAGGED "L.S. 6217"
●	LEAD AND TACK
⊙	LEAD, TACK, AND TAG STAMPED "L.S. 6217"
△	POINT FALLS ON MANHOLE NOTHING SET

CL TIES

JOB NAME: TR 16679		DRAWN BY: RLW	CHECKED BY: BKH
LOCATION: MONTCLAIR		SCALE: 1" = 30'	
DESCRIPTION: MANE STREET		DATE: 8-8-05	
		JOB # 04100-000	SHT. # 9 OF 12



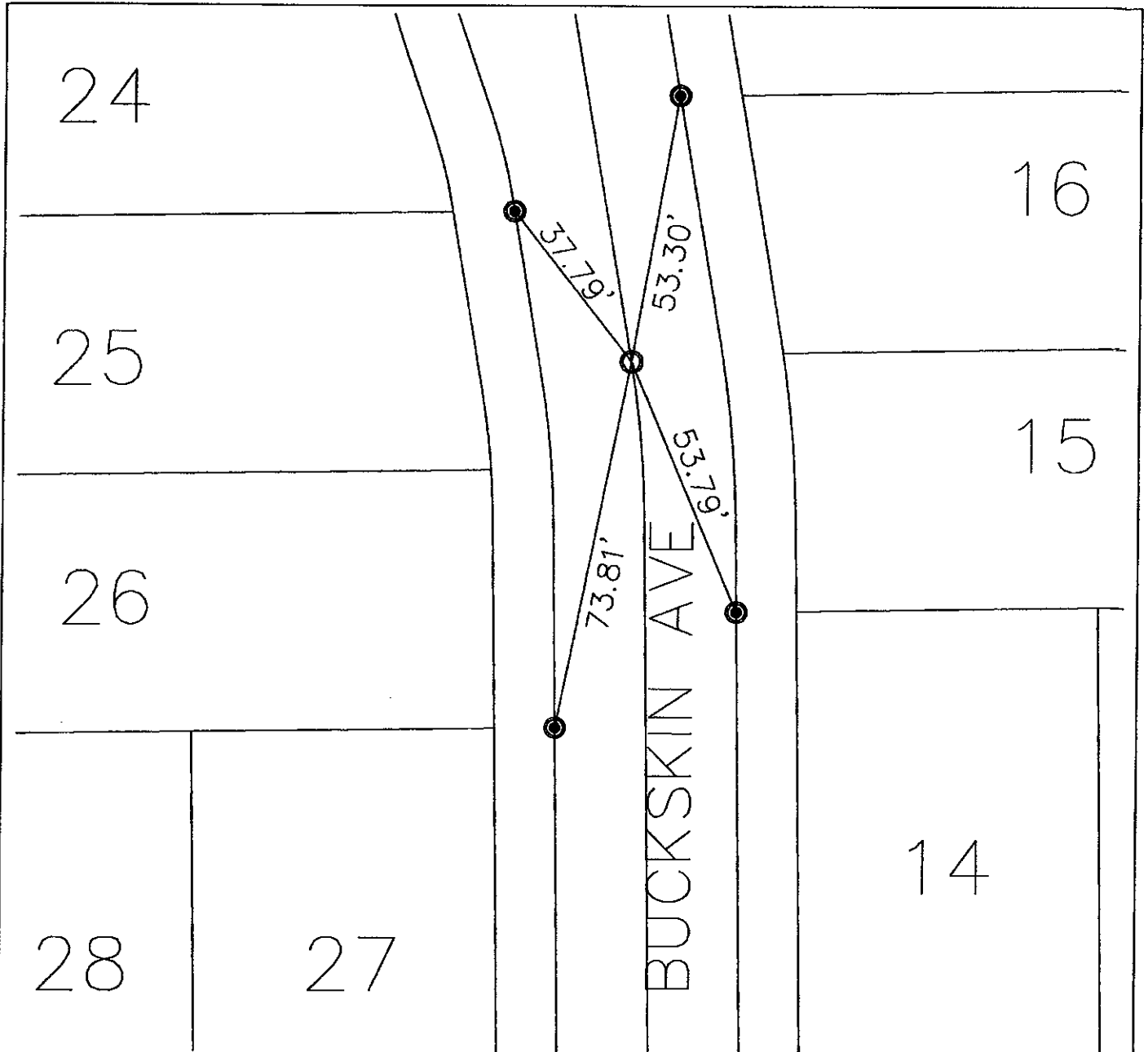


MONUMENT NOTES

SYM.	DESCRIPTION
⊙	SPIKE & WASHER, TAGGED "L.S. 6217"
●	LEAD AND TACK
⊙	LEAD, TACK, AND TAG STAMPED "L.S. 6217"
△	POINT FALLS ON MANHOLE NOTHING SET



CL TIES		
JOB NAME: TR 16679	DRAWN BY: RLW	CHECKED BY: BKH
LOCATION: MONTCLAIR	SCALE: 1" = 30'	
DESCRIPTION: BUCKSKIN AVE	DATE: 8-8-05	
	JOB # 04100-000	SHT. # 10 OF 12



MONUMENT NOTES

SYM.	DESCRIPTION
○	SPIKE & WASHER, TAGGED "L.S. 6217"
●	LEAD AND TACK
⊙	LEAD, TACK, AND TAG STAMPED "L.S. 6217"
△	POINT FALLS ON MANHOLE NOTHING SET

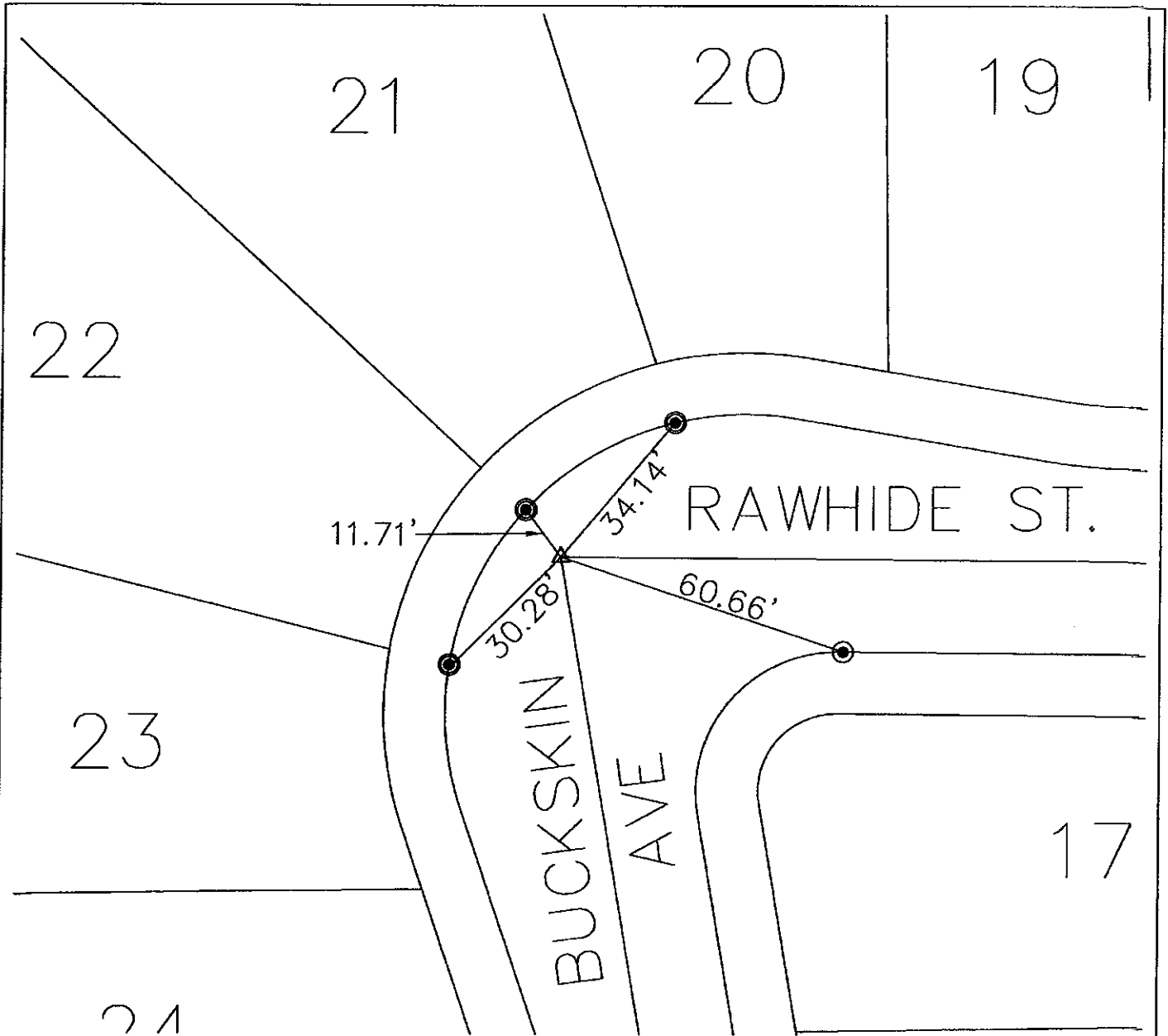


1" = 30'

Hall & Foreman, Inc.
 Civil Engineering - Planning - Surveying - Public Works
 1152 N. Mountain Ave. Ste. 100 • Upland, CA 91786-3669 • 909-962-7777

CL TIES

JOB NAME: TR 16679		DRAWN BY: RLW	CHECKED BY: BKH
LOCATION: MONTCLAIR		SCALE: 1" = 30'	
DESCRIPTION: BUCKSKIN AVE.		DATE: 8-8-05	
		JOB # 04100-000	SHT. # 11 OF 12



MONUMENT NOTES

SYM.	DESCRIPTION
○	SPIKE & WASHER, TAGGED "L.S. 6217"
●	LEAD AND TACK
⊙	LEAD, TACK, AND TAG STAMPED "L.S. 6217"
△	POINT FALLS ON MANHOLE NOTHING SET

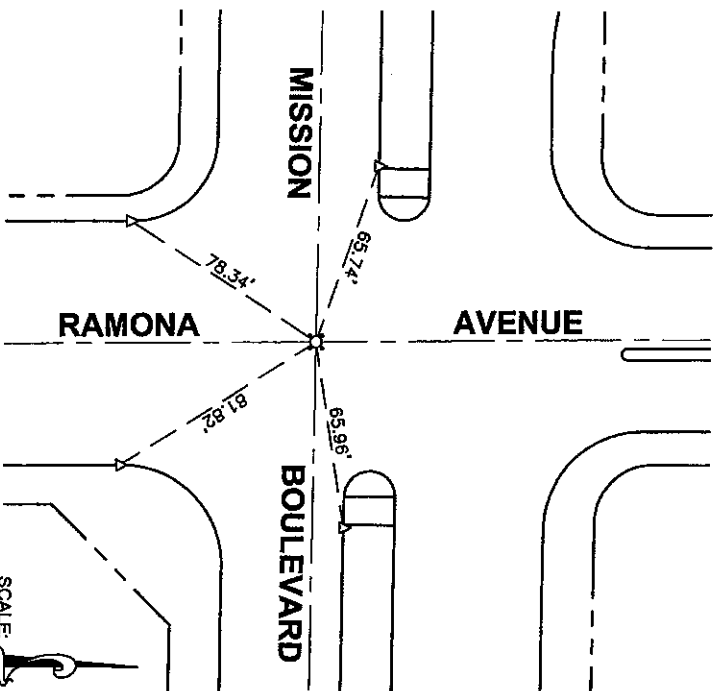
CL TIES

JOB NAME: TR 16679		DRAWN BY: RLW	CHECKED BY: BKH
LOCATION: MONTCLAIR		SCALE: 1" = 30'	
DESCRIPTION: BUCKSKIN AVE. & RAWHIDE ST.		DATE: 8-8-05	
		JOB # 04100-000	SHT. # 12 OF 12



1" = 30'

CENTERLINE TIE NOTES
MISSION BOULEVARD AND RAMONA AVENUE



- POINT FALLS ON MANHOLE, SET 4'-2" PK STRADS
- △ SET LEAD AND TACK

SCALE: 1"=40'



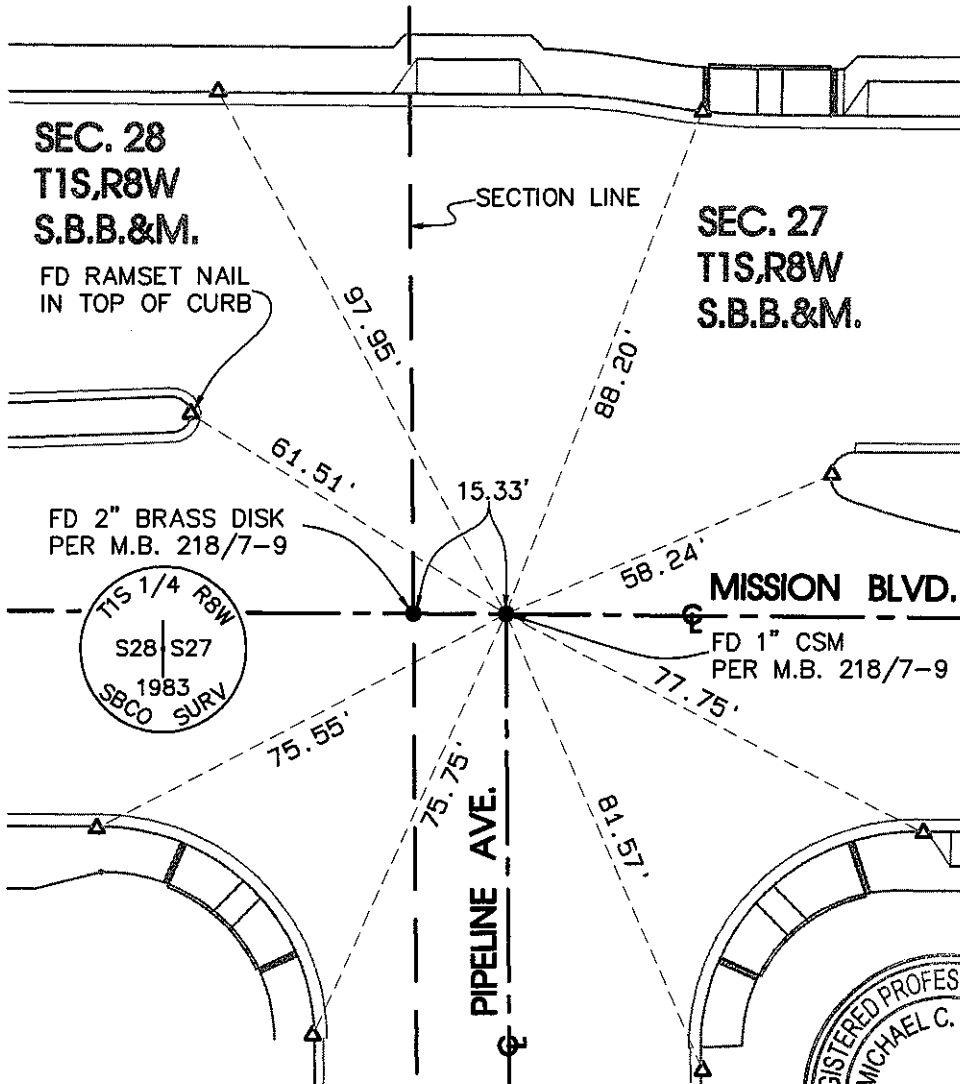
LDKING
Engineers/Planners/Surveyors



Michael A. Baine
MICHAEL A. BAINE, LS 7326

12/16/03
DATE

76-A



SCALE 1" = 30'



NOTES:

- FOUND MONUMENT AS NOTED
- △ SET L&T IN TOP OF CURB UNLESS OTHERWISE NOTED

M. C. HUDSON

JULY 29, 2010

Prepared By:

LDKING

2151 CONVENTION CENTER WAY STE. 100
ONTARIO, CA 91764-4464
(909) 937-0200 FAX (909) 937-0202

City of Montclair
ENGINEERING DIVISION

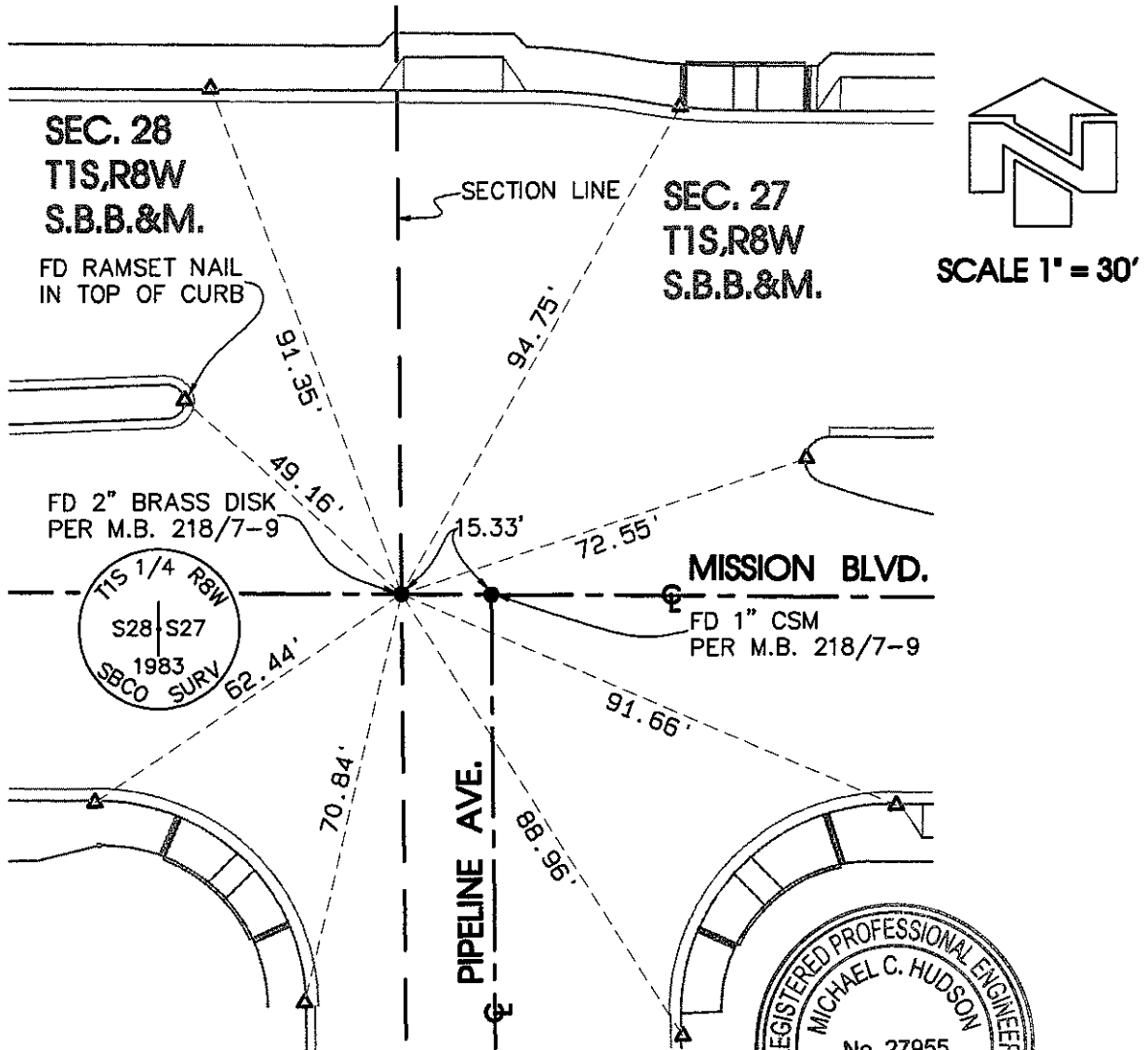
CENTERLINE TIES

INTERSECTION OF
MISSION BLVD. AND PIPELINE AVE.

SHEET

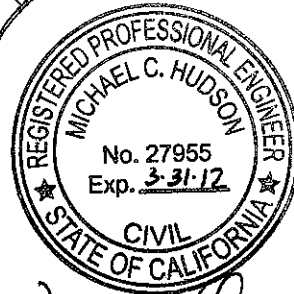
1
OF
1

76-B



NOTES:

- FOUND MONUMENT AS NOTED
- △ SET L&T IN TOP OF CURB UNLESS OTHERWISE NOTED



M. Hudson
 JULY 29, 2010

Prepared By:

LDKING

2151 CONVENTION CENTER WAY STE. 100
 ONTARIO, CA 91764-4464
 (909) 937-0200 FAX (909) 937-0202

City of Montclair
 ENGINEERING DIVISION

CENTERLINE TIES

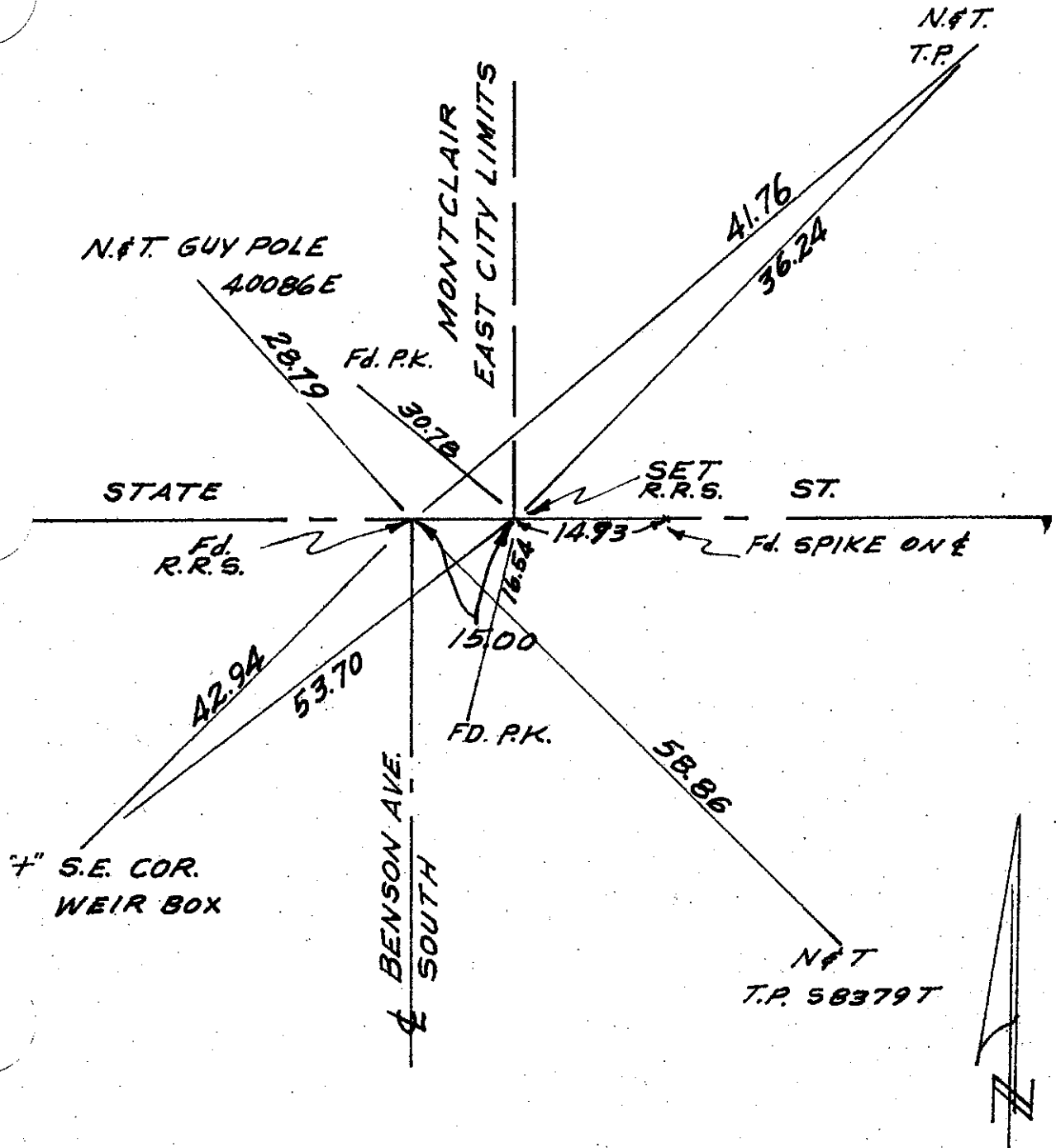
1/4 CORNER
 SEC. 27 & 28, T1S, R8W, S.B.B.&M.

SHEET
 1
 OF
 1

80-A

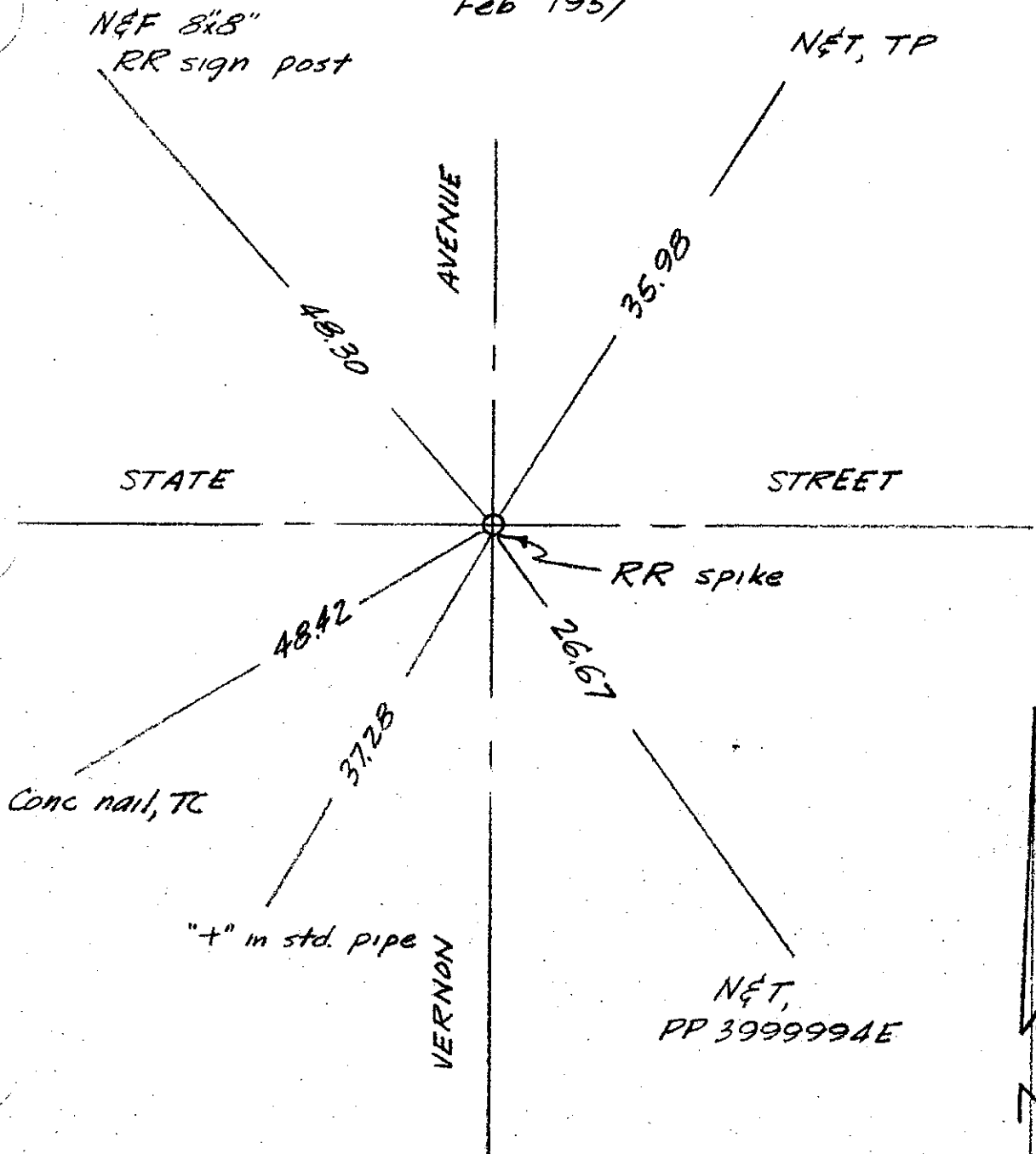
BENSON AVENUE & STATE STREET

NOV. 59



VERNON AVENUE
and
STATE STREET
CITY OF MONTE VISTA

Feb 1957



CENTRAL AVENUE
and
STATE STREET

CITY OF MONTE VISTA

Feb 1957

