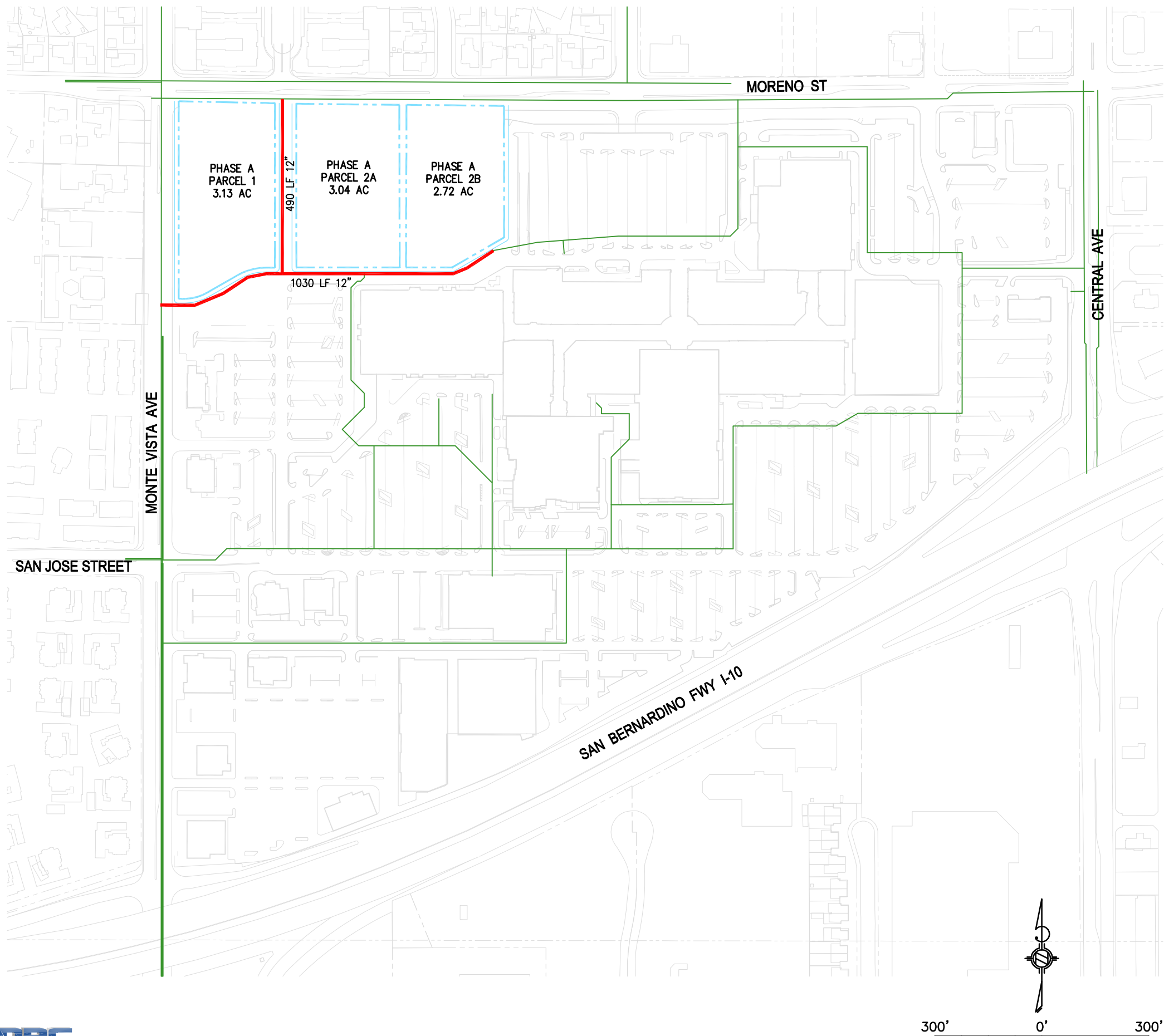


APPENDIX H-3

Water Capacity Study Exhibits

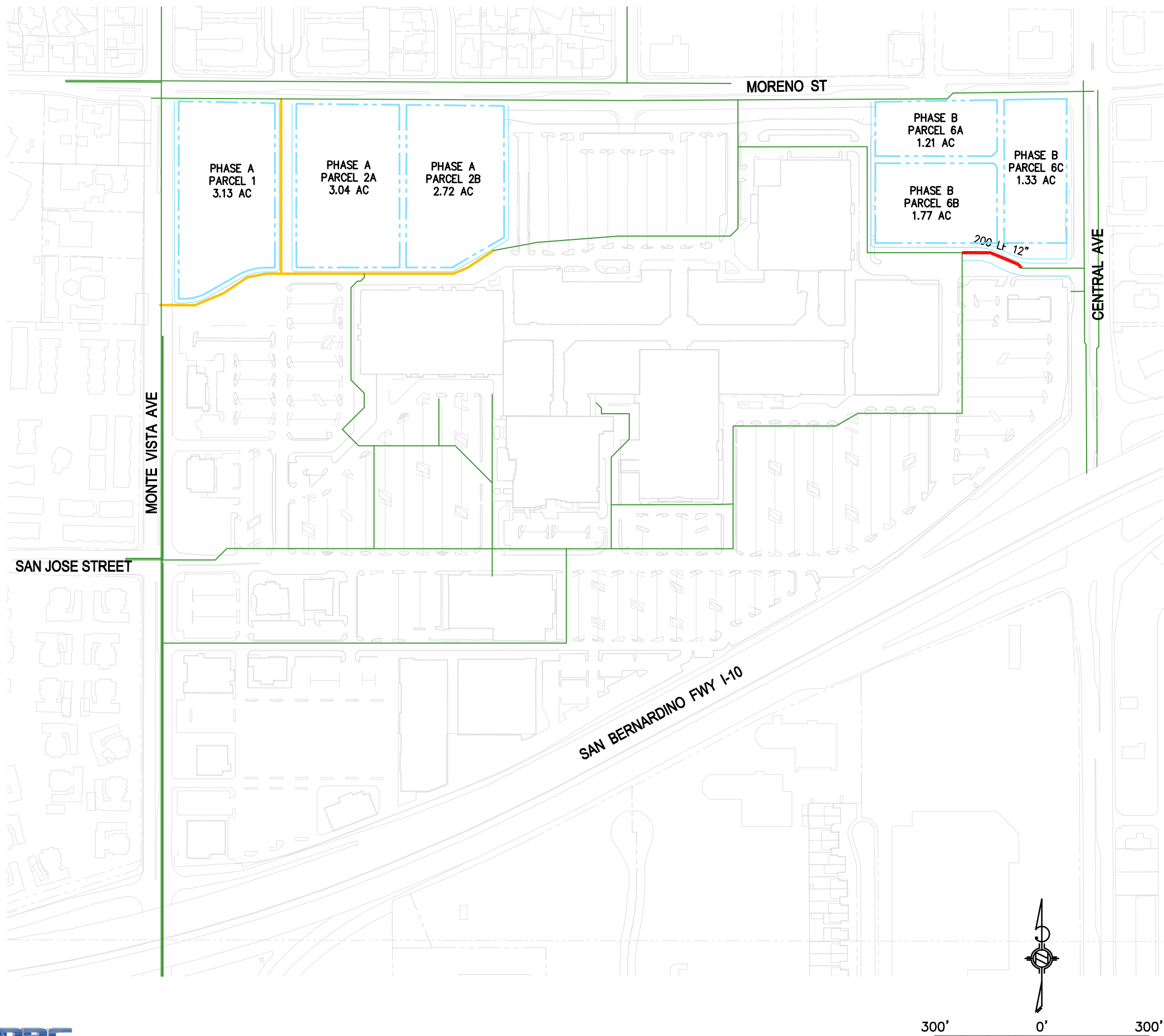


LEGEND

- EXISTING WATER LINE
- PHASE A NEW WATER LINE
- PHASE BOUNDARY

Phase A	
Pipe Ø (in)	12
Phase A New Pipe (ft)	1,520
Phase A Replacement Pipe (ft)	
Total Pipe Phase A (ft)	1,520

NOTE:
PIPE SIZES AND LENGTHS ARE ESTIMATED AND WILL BE
FINALIZED IN THE CONSTRUCTION DOCUMENTS.

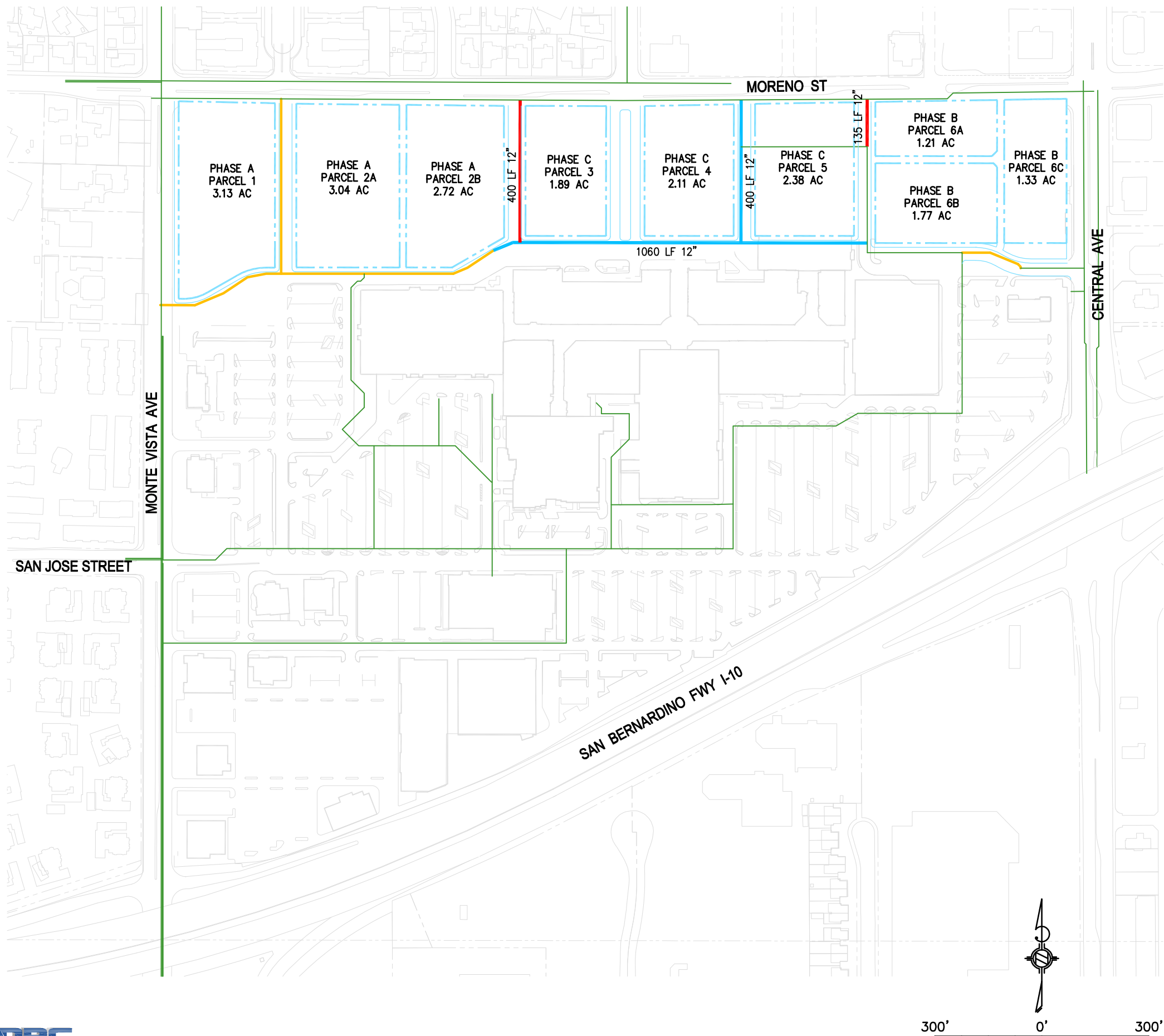


LEGEND

- EXISTING WATER LINE
- PHASE B NEW WATER LINE
- PREVIOUS PHASE WATER LINE
- PHASE BOUNDARY

Phase B	
Pipe Ø (in)	12
Phase B New Pipe (ft)	200
Phase B Replacement Pipe (ft)	
Total Pipe Phases A-B (ft)	1,720

NOTE:
PIPE SIZES AND LENGTHS ARE ESTIMATED AND WILL BE
FINALIZED IN THE CONSTRUCTION DOCUMENTS.

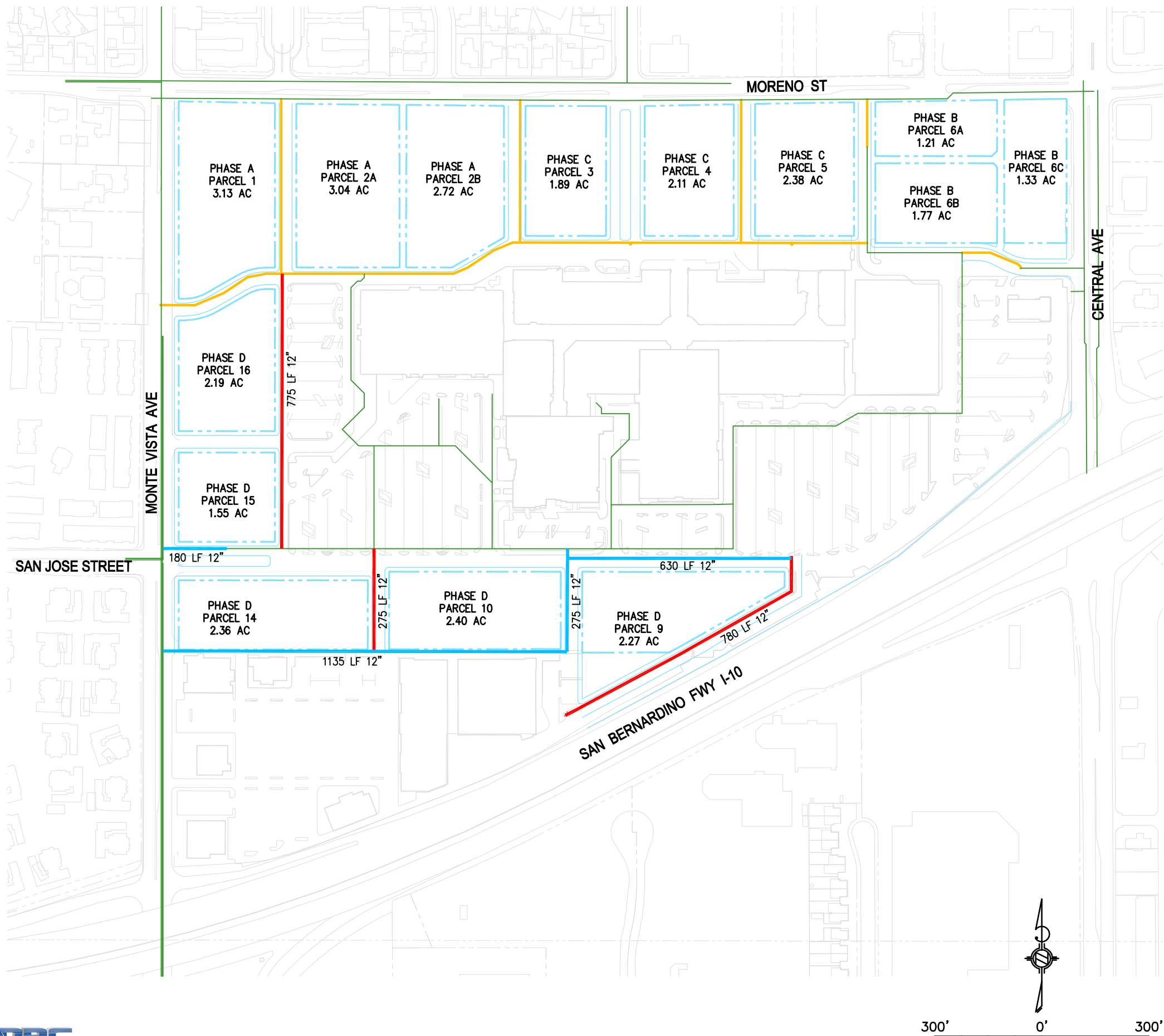


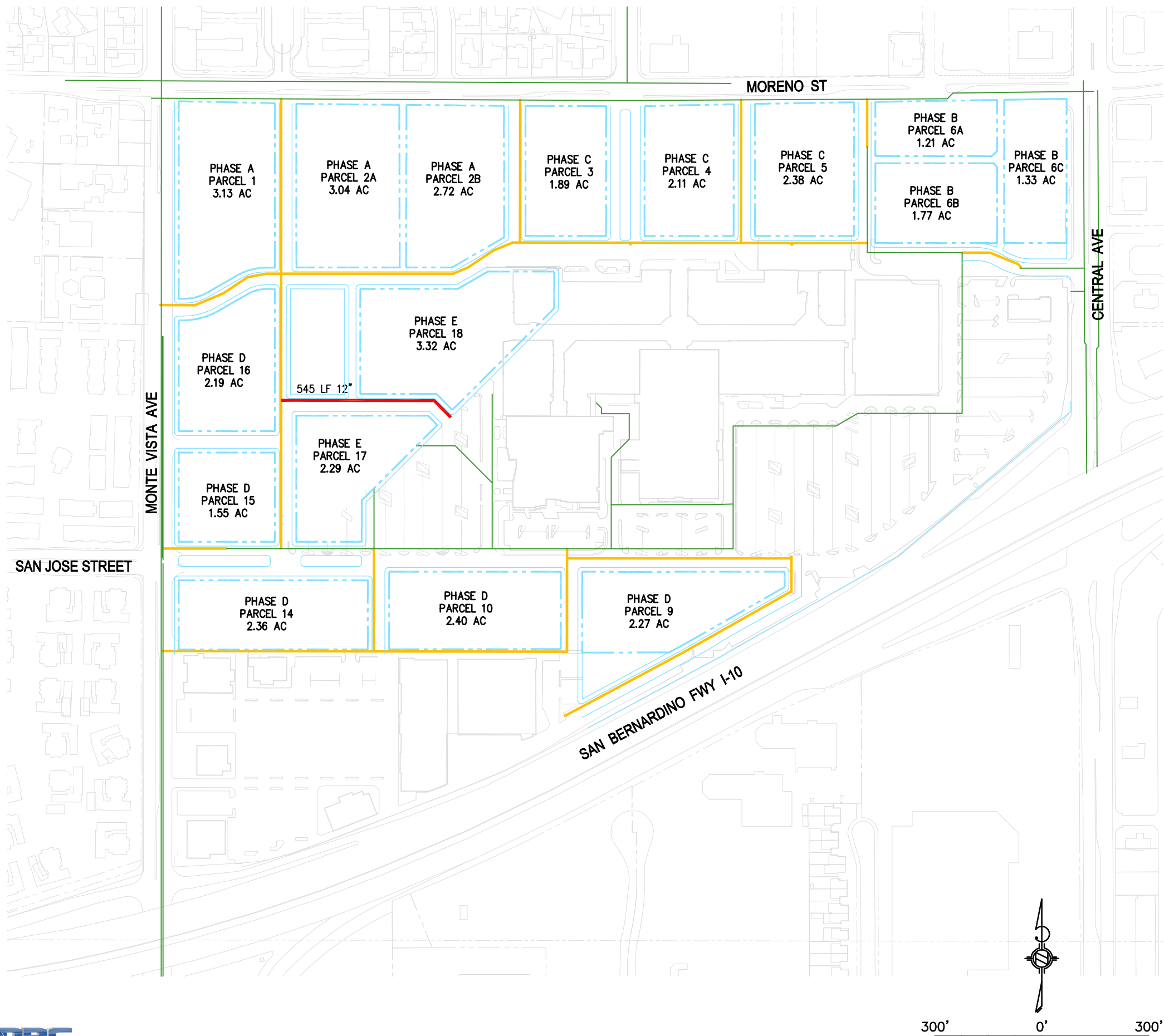
LEGEND

- EXISTING WATER LINE
- PHASE C NEW WATER LINE
- PHASE C REPLACEMENT WATER LINE
- PREVIOUS PHASES WATER LINE
- PHASE BOUNDARY

Phase C	
Pipe Ø (in)	12
Phase C New Pipe (ft)	535
Phase C Replacement Pipe (ft)	1,460
Total Pipe Phases A-C (ft)	3,715

NOTE:
PIPE SIZES AND LENGTHS ARE ESTIMATED AND WILL BE
FINALIZED IN THE CONSTRUCTION DOCUMENTS.



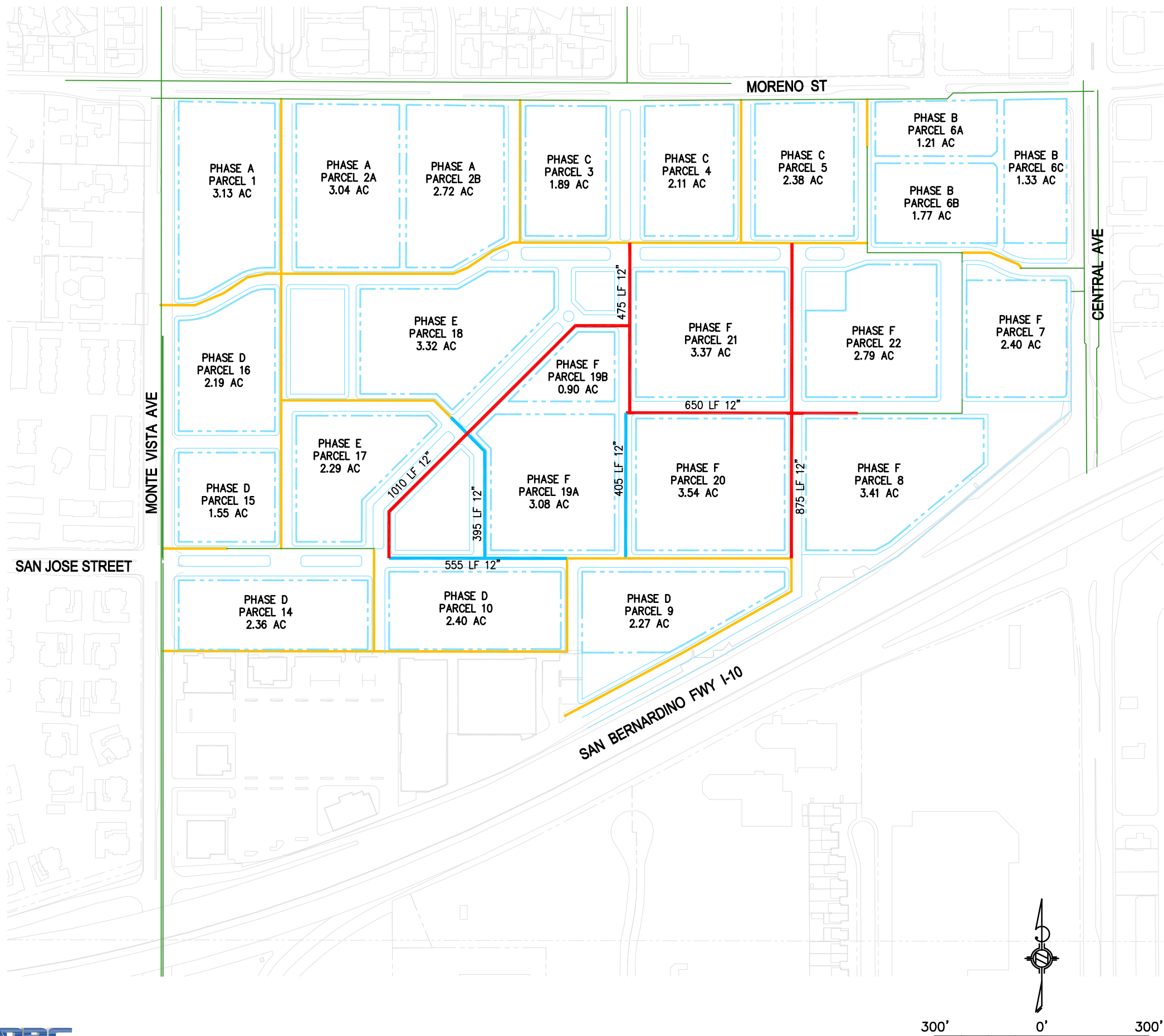


LEGEND

- EXISTING WATER LINE
- PHASE E NEW WATER LINE
- PREVIOUS PHASES WATER LINE
- PHASE BOUNDARY

Phase E	
Pipe Ø (in)	12
Phase E New Pipe (ft)	545
Phase E Replacement Pipe (ft)	
Total Pipe Phases A-E (ft)	8,310

NOTE:
PIPE SIZES AND LENGTHS ARE ESTIMATED AND WILL BE
FINALIZED IN THE CONSTRUCTION DOCUMENTS.

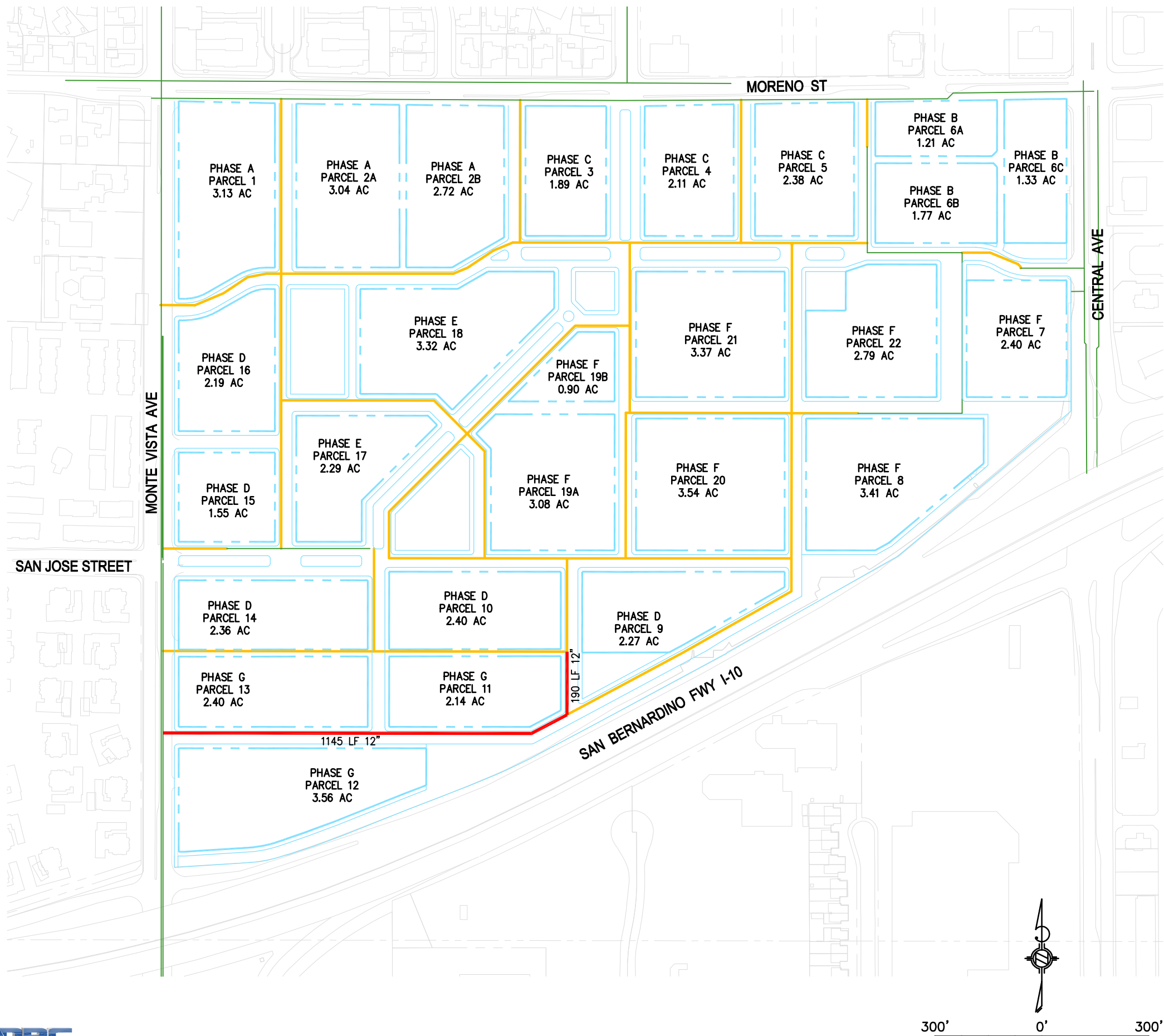


LEGEND

- EXISTING WATER LINE
- PHASE F NEW WATER LINE
- PHASE F REPLACEMENT WATER LINE
- PREVIOUS PHASES WATER LINE
- - - PHASE BOUNDARY

Phase F	
Pipe Ø (in)	12
Phase F New Pipe (ft)	3,010
Phase F Replacement Pipe (ft)	1,355
Total Pipe Phases A-F (ft)	12,675

NOTE:
PIPE SIZES AND LENGTHS ARE ESTIMATED AND WILL BE FINALIZED IN THE CONSTRUCTION DOCUMENTS.



LEGEND

- EXISTING WATER LINE
- PHASE G NEW WATER LINE
- PREVIOUS PHASES WATER LINE
- PHASE BOUNDARY

Phase G	
Pipe Ø (in)	12
Phase G New Pipe (ft)	1,335
Phase G Replacement Pipe (ft)	
Total Pipe Phases A-G (ft)	14,010

NOTE:
PIPE SIZES AND LENGTHS ARE ESTIMATED AND WILL BE
FINALIZED IN THE CONSTRUCTION DOCUMENTS.