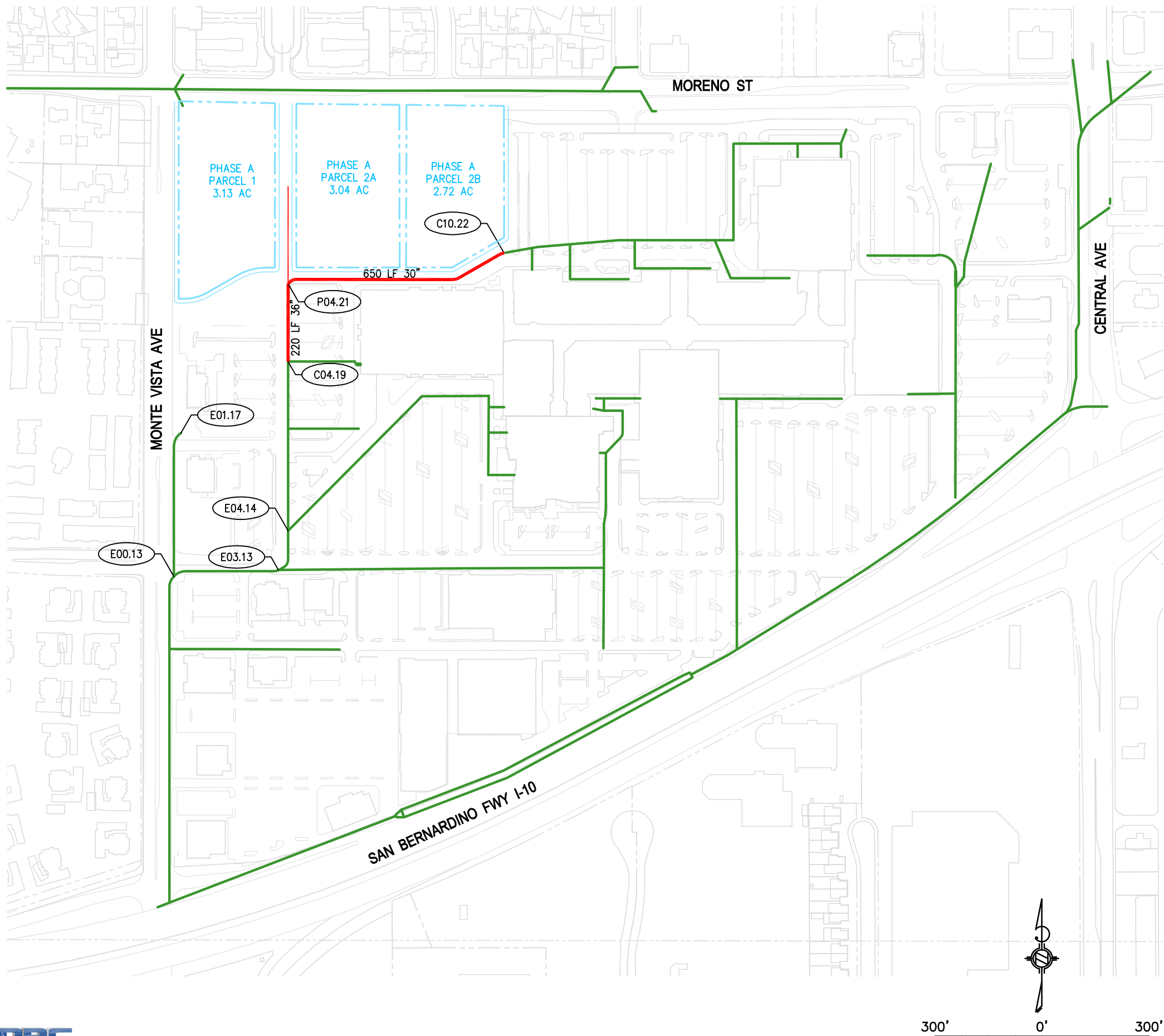


APPENDIX H-5

Storm Drain Capacity Study Exhibits



LEGEND

- EXISTING STORM DRAIN
- PHASE A NEW STORM DRAIN
- PHASE BOUNDARY
- XXX.XX NODE ID

Phase A				
Pipe Ø (in)	18	24	30	36
Phase A				
New Pipe (ft)			650	220
Phase A				
Replacement				
Pipe (ft)				
Total Pipe			650	220
Phase A (ft)				

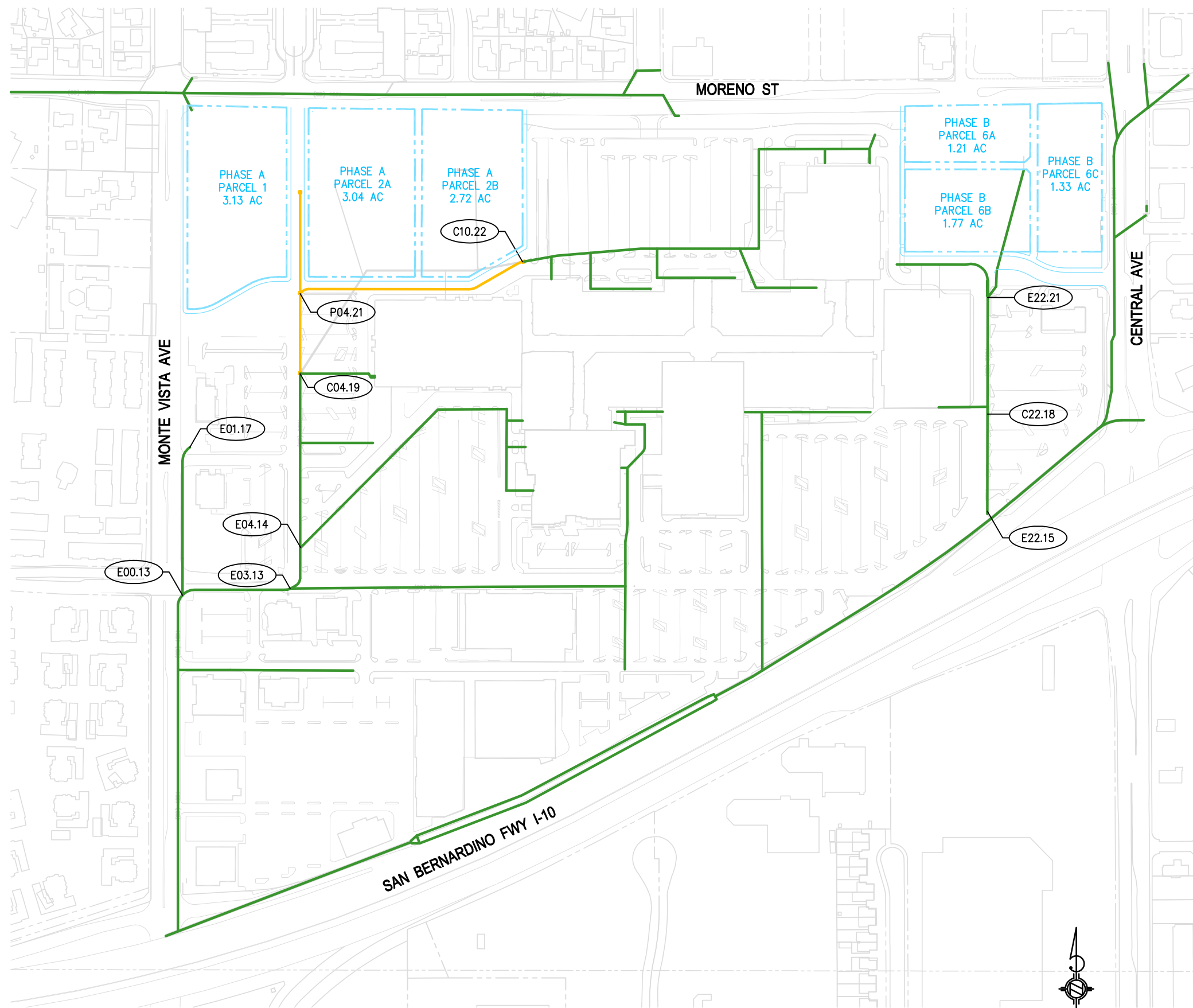
NOTE:
PIPE SIZES AND LENGTHS ARE ESTIMATED AND WILL BE
FINALIZED IN THE CONSTRUCTION DOCUMENTS.

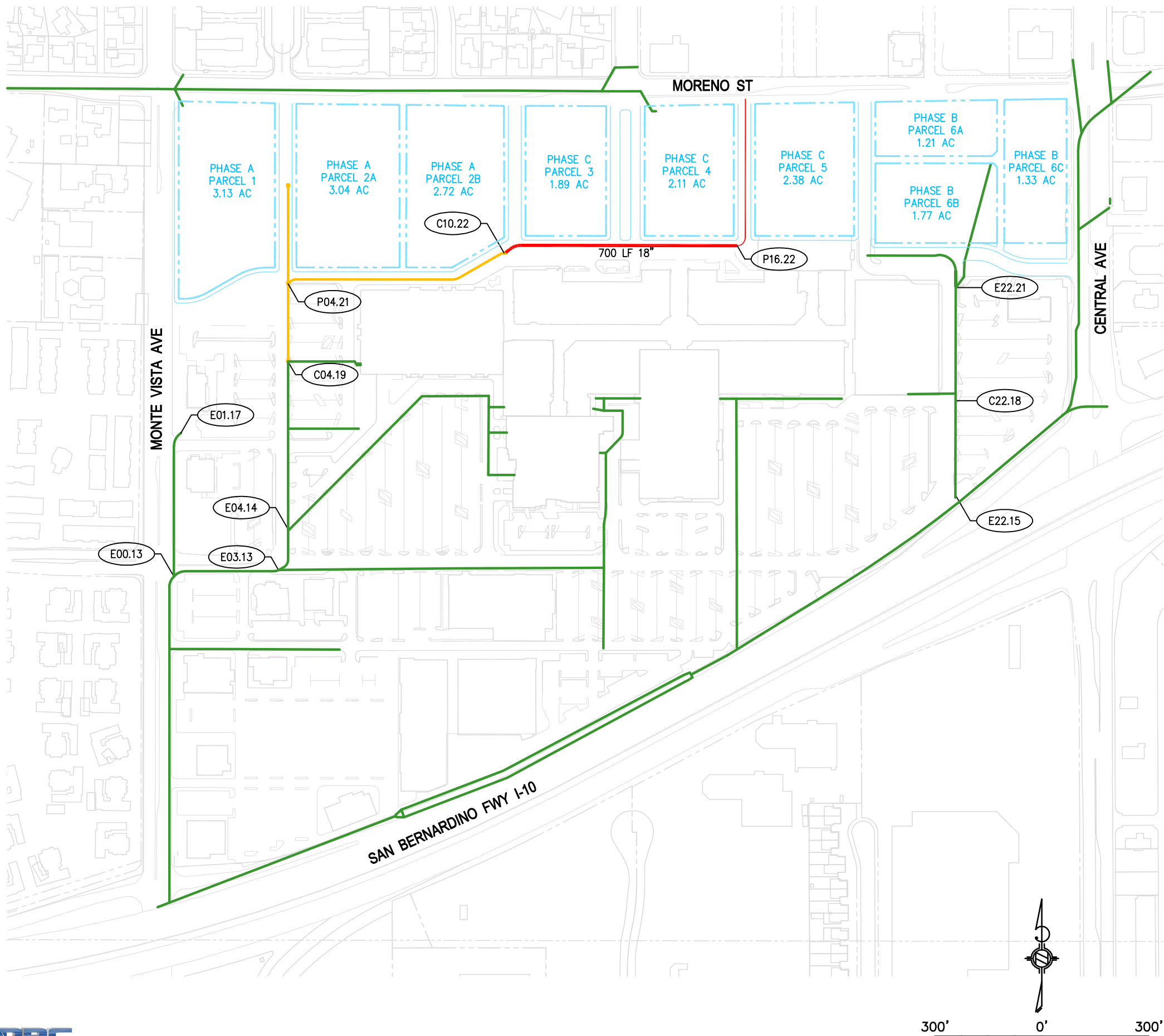
LEGEND

- EXISTING STORM DRAIN
- PREVIOUS PHASE STORM DRAIN
- PHASE BOUNDARY
- XXX.XX NODE ID

Phase B			
Pipe Ø (in)	18	24	30
Phase B New Pipe (ft)			
Phase B Replacement Pipe (ft)			
Total Pipe Phases A-B (ft)			650
			220

NOTE:
PIPE SIZES AND LENGTHS ARE ESTIMATED AND WILL BE
FINALIZED IN THE CONSTRUCTION DOCUMENTS.



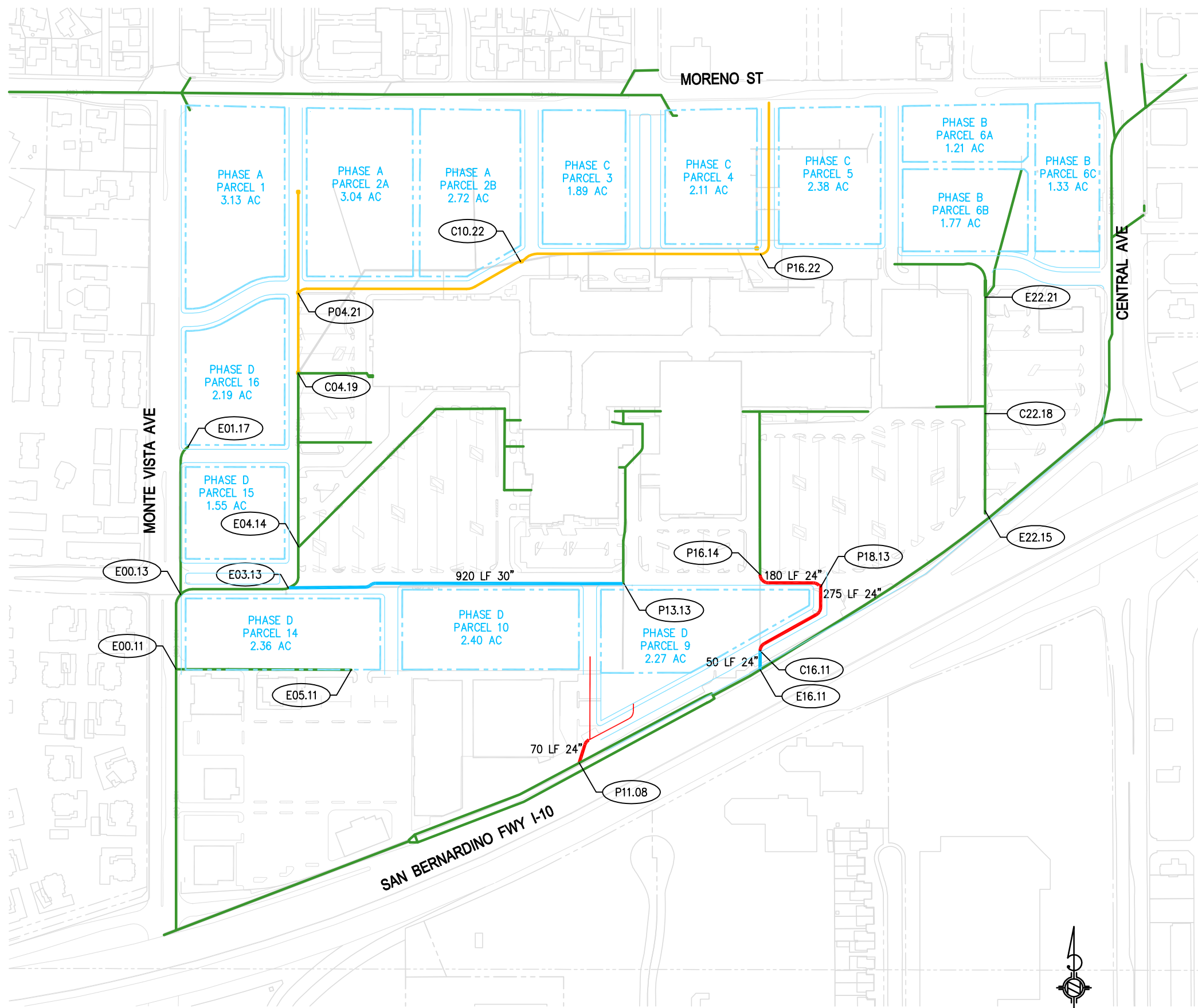


LEGEND

- EXISTING STORM DRAIN
- PHASE C NEW STORM DRAIN
- PREVIOUS PHASES STORM DRAIN
- PHASE BOUNDARY
- XXX.XX NODE ID

Pipe Ø (in)	Phase C			
	18	24	30	36
Phase C				
New Pipe (ft)	700			
Phase C				
Replacement				
Pipe (ft)				
Total Pipe				
Phases A-C (ft)	700	0	650	220

NOTE:
PIPE SIZES AND LENGTHS ARE ESTIMATED AND WILL BE
FINALIZED IN THE CONSTRUCTION DOCUMENTS.



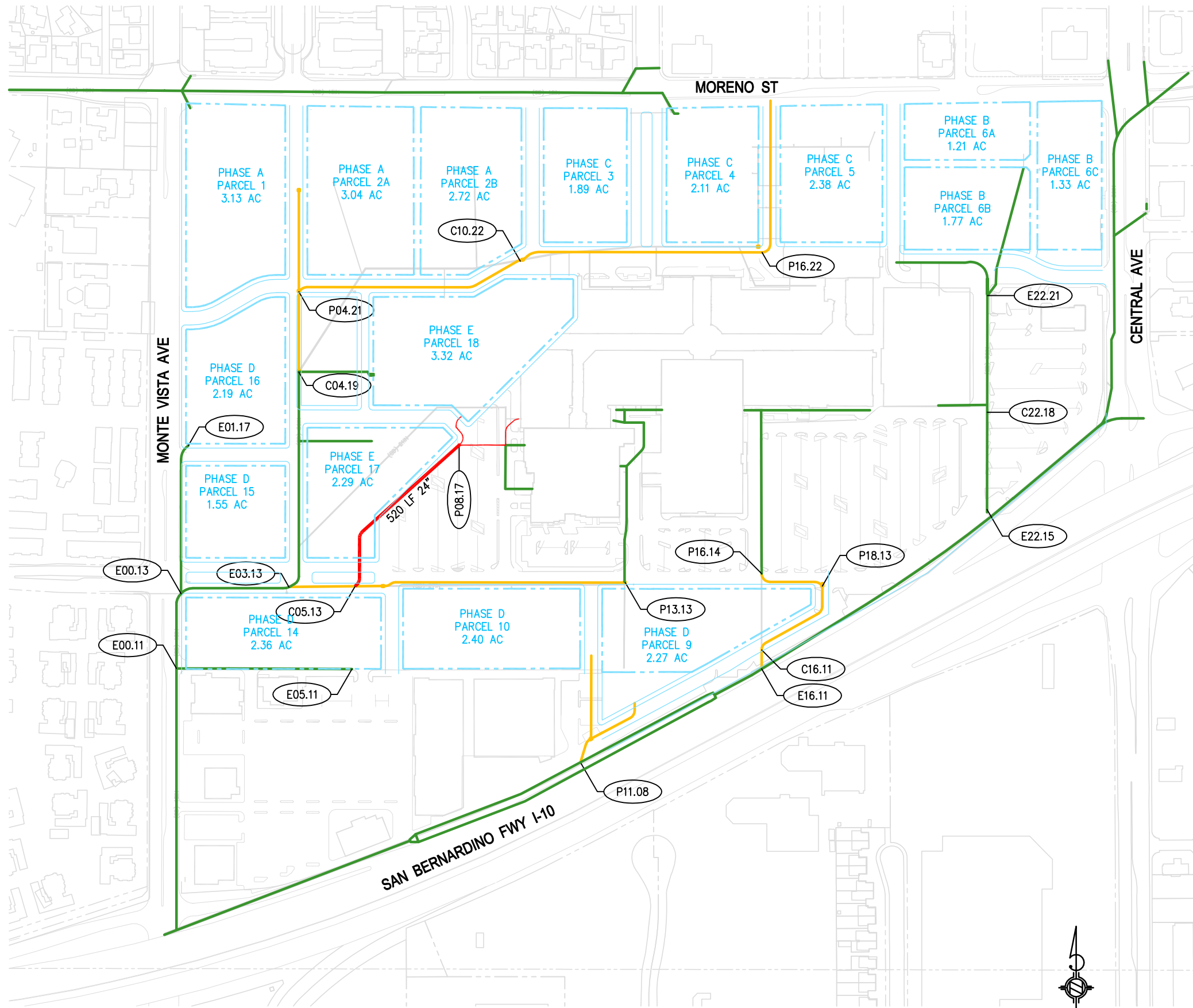
LEGEND

- EXISTING STORM DRAIN
- PHASE D NEW STORM DRAIN
- PHASE D REPLACEMENT STORM DRAIN
- PREVIOUS PHASES STORM DRAIN
- PHASE BOUNDARY
- XXX.XX NODE ID

Phase D				
Pipe Ø (in)	18	24	30	36
Phase D New Pipe (ft)		525		
Phase D Replacement Pipe (ft)		50	920	
Total Pipe Phases A-D (ft)	700	575	1,570	220

NOTE:
PIPE SIZES AND LENGTHS ARE ESTIMATED AND WILL BE
FINALIZED IN THE CONSTRUCTION DOCUMENTS.





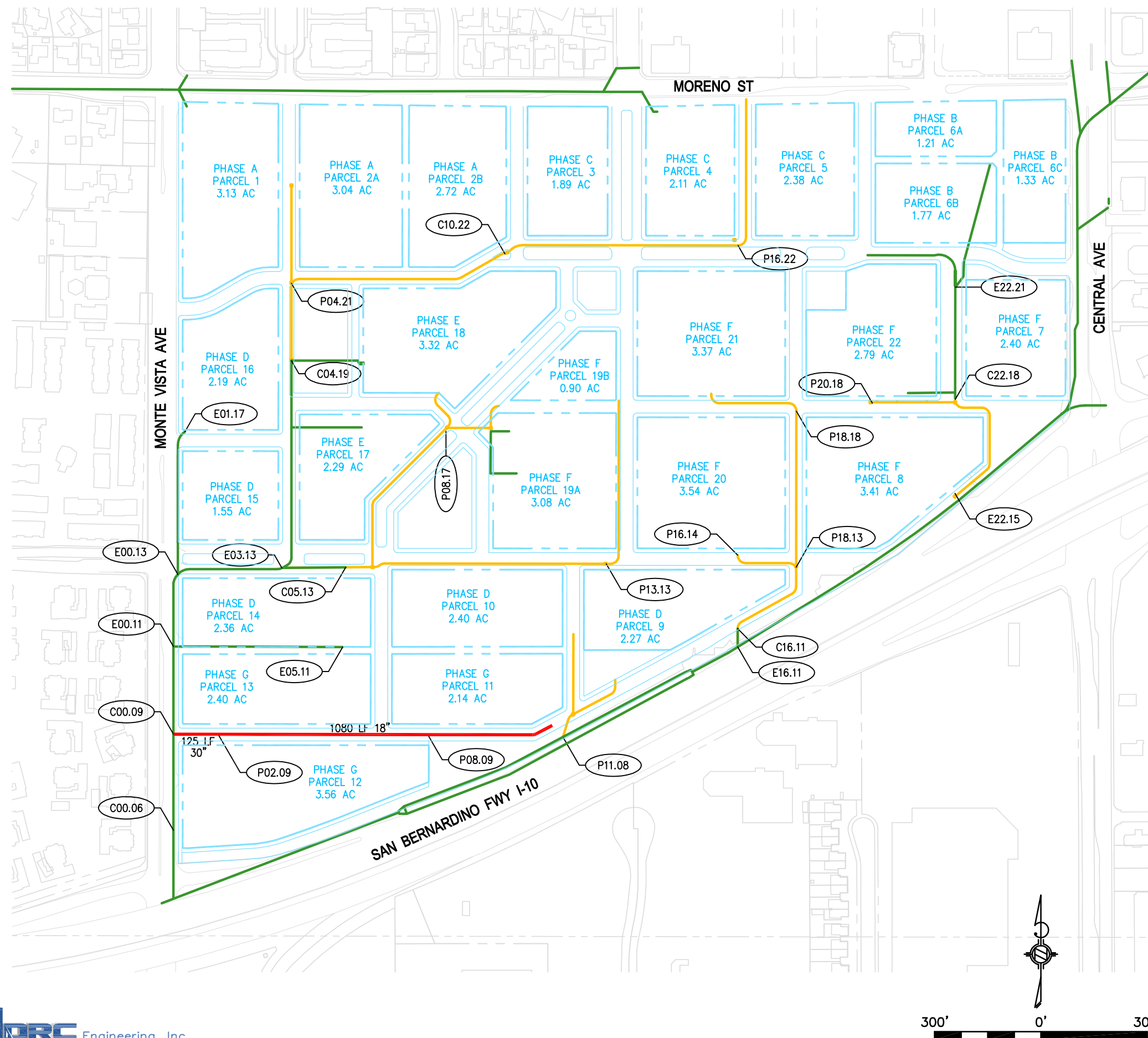
LEGEND

- EXISTING STORM DRAIN
- PHASE E NEW STORM DRAIN
- PREVIOUS PHASES STORM DRAIN
- PHASE BOUNDARY
- XXX.XX NODE ID

Phase E				
Pipe Ø (in)	18	24	30	36
Phase E		520		
New Pipe (ft)				
Phase E				
Replacement				
Pipe (ft)				
Total Pipe	700	1,095	1,570	220
Phases A-E (ft)				

NOTE:
PIPE SIZES AND LENGTHS ARE ESTIMATED AND WILL BE
FINALIZED IN THE CONSTRUCTION DOCUMENTS.





LEGEND

- EXISTING STORM DRAIN
- PHASE G NEW STORM DRAIN
- PREVIOUS PHASES STORM DRAIN
- PHASE BOUNDARY
- XXX.XX NODE ID

Pipe Ø (in)	Phase G			
	18	24	30	36
Phase G	1,080		125	
New Pipe (ft)				
Phase G				
Replacement				
Pipe (ft)				
Total Pipe	3,180	1,095	2,065	220
Phases A-G (ft)				

NOTE:
PIPE SIZES AND LENGTHS ARE ESTIMATED AND WILL BE
FINALIZED IN THE CONSTRUCTION DOCUMENTS.