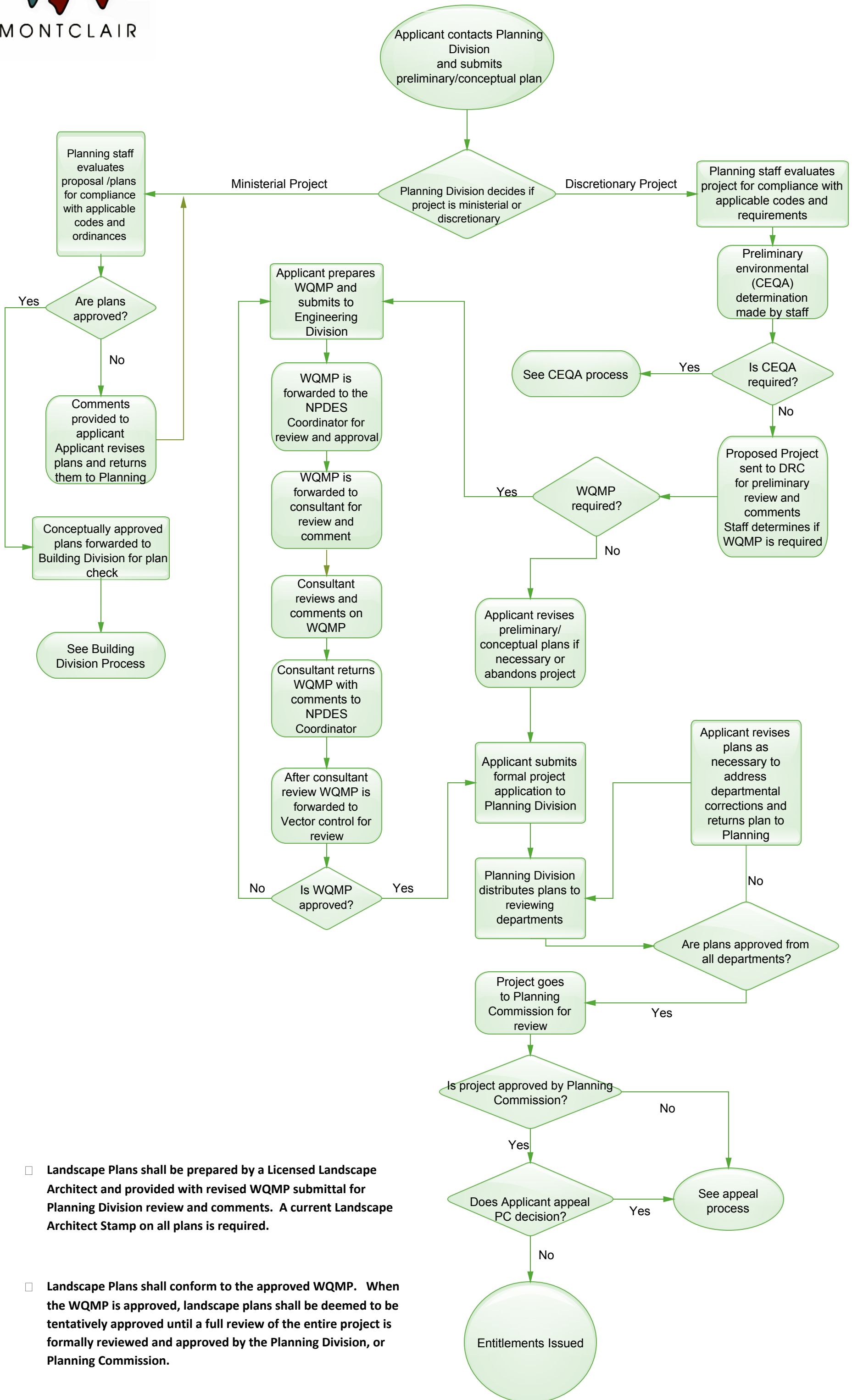


PLANNING DIVISION DEVELOPMENT PROCESS



- Landscape Plans shall be prepared by a Licensed Landscape Architect and provided with revised WQMP submittal for Planning Division review and comments. A current Landscape Architect Stamp on all plans is required.
- Landscape Plans shall conform to the approved WQMP. When the WQMP is approved, landscape plans shall be deemed to be tentatively approved until a full review of the entire project is formally reviewed and approved by the Planning Division, or Planning Commission.