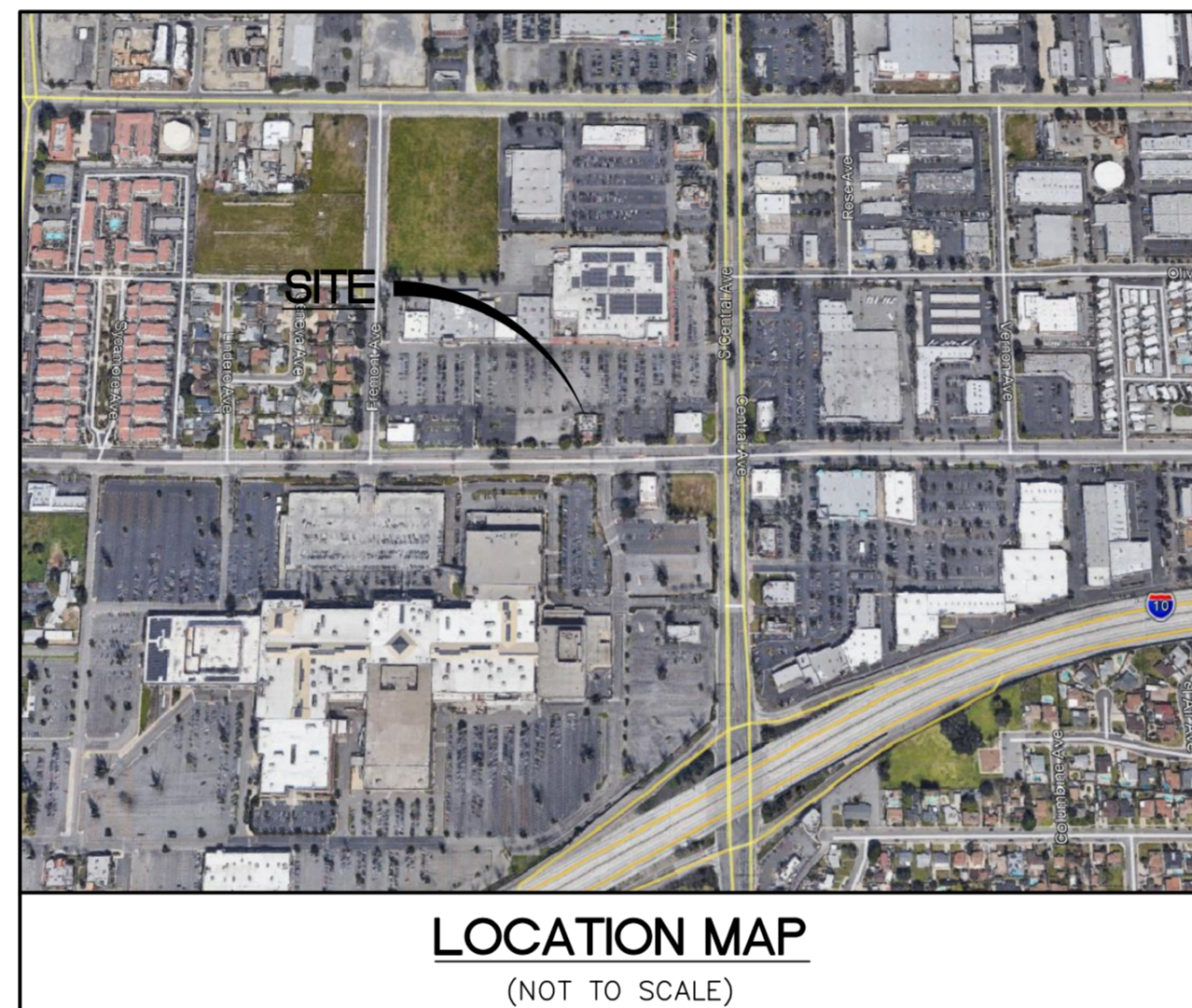


PANERA BAKERY CAFE 6239

5220 MORENO STREET
MONTCLAIR, CA 91763



INDEX

| | | REVISIONS | | | | | | | | |
|------|-----------------------------|-----------|---|---|---|---|---|---|---|---|
| | | 1 | 2 | 3 | 4 | 5 | 6 | 7 | 8 | 9 |
| C1.0 | COVER SHEET | | | | | | | | | |
| C2.0 | SITE PLAN | | | | | | | | | |
| C3.0 | PRELIM PRECISE GRADING PLAN | | | | | | | | | |
| L1.0 | CONCEPTUAL LANDSCAPE PLAN | | | | | | | | | |
| A1 | FLOOR PLAN | | | | | | | | | |
| A2 | EXTERIOR ELEVATIONS | | | | | | | | | |
| A3 | COLOR EXTERIOR ELEVATIONS | | | | | | | | | |
| A4 | PERSPECTIVES | | | | | | | | | |
| A5 | PHOTOMETRIC PLAN | | | | | | | | | |

DESIGN AND DEVELOPMENT CONTACTS

| | | | |
|-----------------------|-------------------------------------------------------------------------------------------------------------------------------|----------------------------|--------------------------------------------------------------------------------------------------------------------|
| OWNER | LEE & ASSOCIATES 3240 MISSION INN AVE. RIVERSIDE, CA 92507 (951) 276-3636 CONTACT: NICK WIRICK | ARCHITECT | NORR 325 N LASALLE ST, SUITE 500 CHICAGO, IL 60654 (312) 873-1053 CONTACT: BILLY VENIA |
| DEVELOPER | PANERA, LLC 3630 SOUTH GEYER ROAD, SUITE 100 ST. LOUIS, MO 63127 (314) 984-2525 CONTACT: JUSTIN KNEPPER | SURVEYOR | CLARK LAND SURVEYING 177 S. TIFFANY DRIVE, UNIT 1 PUEBLO WEST, CO (719) 582-1270 CONTACT: TRENT KEENAN |
| CIVIL ENGINEER | COLE & ASSOCIATES, INC. 401 SOUTH 18TH STREET, SUITE 200 ST. LOUIS, MO 63103 (314) 984-9887 CONTACT: CHRIS WILSON | LANDSCAPE ARCHITECT | THOMAS H. KOCH 26482 ELMCREST WAY LAKE FOREST, CA 92630 (949) 348-9150 |

UTILITIES

| | | | |
|-------------------------|------------------------------------------------------------------------------------------------|-------------------------------|-----------------------------------------------------------------------------------------------|
| GAS SERVICE | SOUTHERN CALIFORNIA GAS COMPANY 5566 ARROW HIGHWAY MONTCLAIR, CA 91763 1-877-238-0092 | COMMUNICATIONS SERVICE | VERIZON 5094 N. MONTCLAIR PLAZA LANE MONTCLAIR, CA 91763 (909) 398-1579 |
| WATER SERVICE | MONTE VISTA WATER DISTRICT 10575 CENTRAL AVENUE MONTCLAIR, CA 91763 (909) 624-0035 | SANITARY SEWER SERVICE | CITY OF MONTCLAIR PUBLIC WORKS 5111 BENITO STREET MONTCLAIR, CA 91763 (909) 625-9478 |
| ELECTRIC SERVICE | SOUTHERN CALIFORNIA EDISON P.O. BOX 800 ROSEMEAD, CA 91770 1-800-655-4555 | STORM SEWER SERVICE | CITY OF MONTCLAIR PUBLIC WORKS 5111 BENITO STREET MONTCLAIR, CA 91763 (909) 625-9478 |

UTILITY INFORMATION

UTILITIES SHOWN HAVE BEEN TAKEN FROM AVAILABLE SURVEYS. UTILITY COMPANY MAPS AND PHYSICAL PROPERTY INSPECTION. THE LOCATIONS AND FACILITIES SHALL BE CONSIDERED APPROXIMATE ONLY. THERE MAY BE ADDITIONAL UTILITIES THAT HAVE NOT BEEN SHOWN ON THIS SURVEY. THE CONTRACTOR WILL BE RESPONSIBLE FOR THE LOCATIONS OF ALL UTILITIES PRIOR TO EXCAVATION OR CONSTRUCTION.

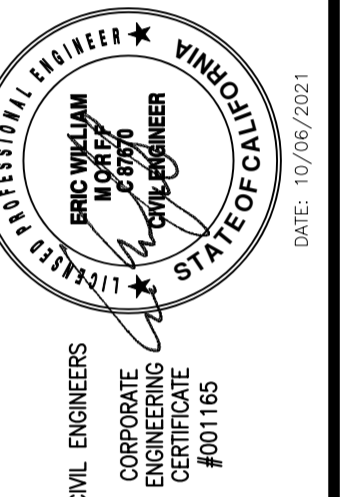


CALL 811 DIG ALERT TO HAVE UTILITY LOCATIONS MARKED IN FIELD AT LEAST TWO DAYS BEFORE YOU DIG.

LEGEND

| EXISTING | | PROPOSED |
|-------------------|---------------------------|----------------------------------------|
| --- 460 --- | CONTOURS | --- 460 --- |
| --- 459 --- | | --- 459 --- |
| +620.15 | SPOT GRADE | +621.25 (TOP OF CURB) (FIRST PAVEMENT) |
| ~~~~~ | TREE LINE | ~~~~~ |
| | TREE | |
| | BUSH | |
| | STORM MANHOLE | |
| | AREA INLET | |
| | CURB INLET | |
| | GRATED INLET | |
| | FLARED END SECTION | |
| --- 12" RCP --- | STORM SEWER | --- 12" RCP --- |
| | GRATED MANHOLE | |
| | STORM DESIGNATOR | |
| | DOWNSPOUT | |
| | DRAINAGE PIPE | |
| | SWALE/SLOPE INDICATOR | |
| --- 8" VCP --- | SANITARY MANHOLE | --- 8" VCP --- |
| | SANITARY SEWER | |
| | CLEAN OUT | |
| | SANITARY DESIGNATOR | |
| | UTILITY POLE | |
| | GUY WIRE | |
| --- OU --- | OVERHEAD UTILITY | --- OU --- |
| --- UE --- UE --- | UNDERGROUND ELECTRIC | --- UE --- UE --- |
| | ELECTRIC MARKER | |
| | ELECTRIC METER | |
| | ELECTRIC BOX | |
| | ELECTRIC PULL BOX | |
| | ELECTRIC TRANSFORMER | |
| | ELECTRIC MANHOLE | |
| --- UT --- | UNDERGROUND TELEPHONE | --- UT --- |
| | FIBER OPTIC MARKER | |
| | CABLE MARKER | |
| | GAS LINE | |
| | GAS VALVE | |
| | GAS METER | |
| | GAS MARKER | |
| | WATER LINE | |
| | WATER VALVE | |
| | WATER METER | |
| | FIRE HYDRANT | |
| | SIGN | |
| | MAIL BOX | |
| | TEST HOLE | |
| | LIGHT STANDARD | |
| | FENCE | |
| | BOLLARD | |
| | RETAINING WALL | |
| | CONCRETE PAVEMENT | |
| | SILTATION FENCE | |
| | AIR CONDITIONER | |
| | FLAG POLE | |
| | MONITORING WELL | |
| | PARKING METER | |
| | PLANTER | |
| | SPRINKLER CONTROL BOX | |
| | SPRINKLER | |
| | SPRINKLER VALVE | |
| | TRAFFIC CONTROL BOX | |
| | TRAFFIC POLE | |
| | YARD LIGHT | |
| | GUARD RAIL | |
| | PROPERTY LINE | |
| | EASEMENT | |
| | SETBACK | |
| | INLET PROTECTION | |
| | WATTLE | |
| | CHECK DAM | |
| | USE IN PLACE | (UIP) |
| | TO BE REMOVED | (TBR) |
| | ADJUST TO GRADE | (ATG) |
| | TO BE REMOVED & RELOCATED | (TBR&R) |
| | TYPICAL | (TYP) |
| | NOT TO SCALE | N.T.S. |
| | HIGH POINT IN GRADE | HP |
| | LOW POINT IN GRADE | LP |
| | TOP OF WALL | TW |
| | BOTTOM OF WALL | BW |
| | NOT IN CONTRACT | (NIC) |

DEVELOPER/OWNER:
PANERA, LLC
3630 SOUTH GEYER ROAD, SUITE 100
ST. LOUIS, MO 63127
(314) 984-2646

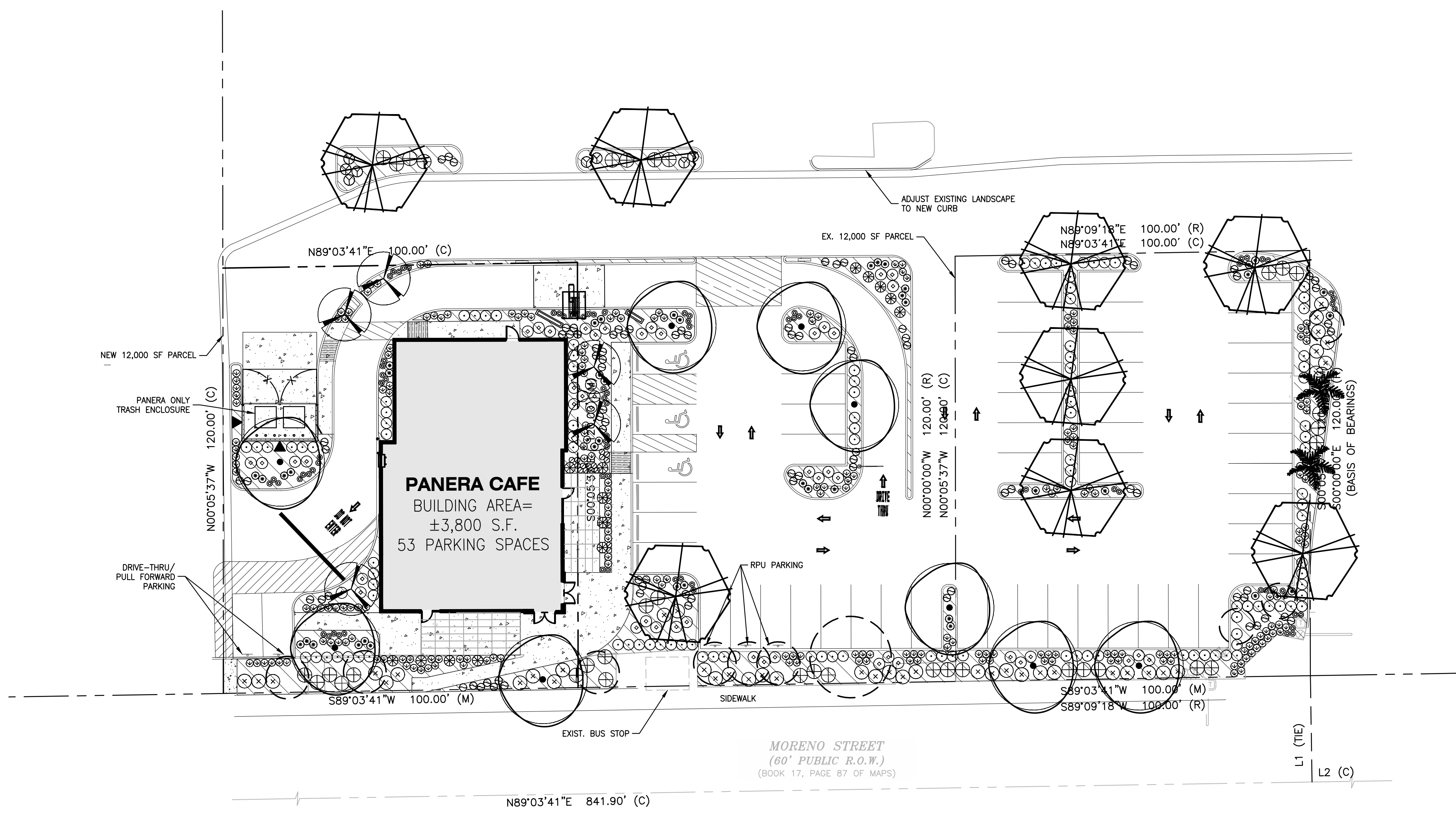


PANERA BAKERY CAFE #6239
5220 MORENO STREET
MONTCLAIR, CA 91763



DESIGN/CALC BY: LFD
DRAWN BY: AMG
CHECKED BY: AMG
DRAWING SCALE: AS SHOWN
DATE: 10/06/2021
Job Number: 17-0037-000A
Sheet Number: C1.0

USER: Thomas Koch TAB: L1.0
 DATE: September 23, 2021 - 3:03:47 PM
 DRAWING: C:\Users\thk\Documents\THK Clients\Cole\Panera Monicler\L1.0 Concepting.dwg



PROPOSED PLANT LEGEND

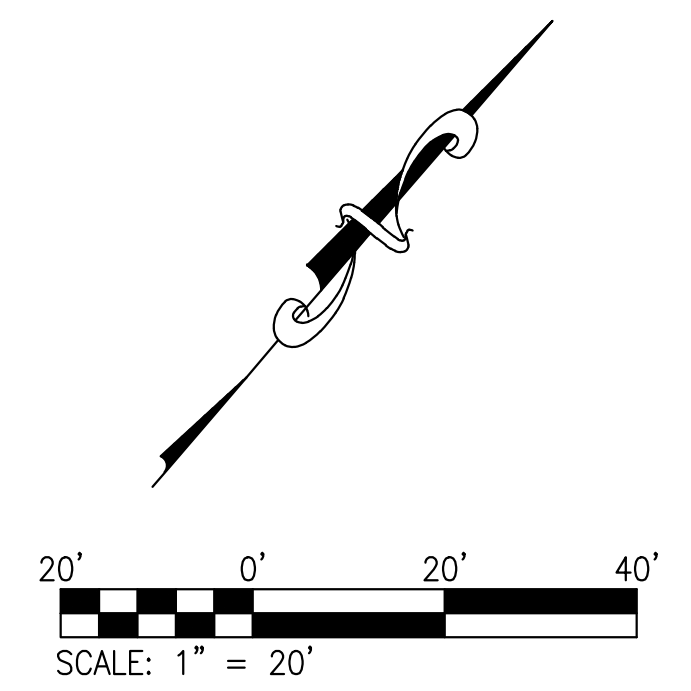
| SYMBOL | BOTANICAL NAME COMMON NAME | QTY. | CONTAINER SIZE MAINTAIN H X W | WATER USE COMMENTS |
|---------------------|------------------------------------------------------------|------|----------------------------------|-----------------------|
| | JUNIPERUS S. 'PATHFINDER' BLUE ARROW JUNIPER | 13 | 15 GALLON 8" x 3" | LOW |
| | KOELREUTERIA PANICULATA GOLDEN RAIN TREE | 8 | 24" BOX 25' x 30' | LOW 6' CLEAR TRUNK |
| | LAGERSTROEMIA 'NATCHEZ' CRAPE MYRTLE | 8 | 15 GALLON 20' x 15' | MOD |
| | PLATANUS RACEMOSA CALIFORNIA SYCAMORE | 9 | 24" BOX 25' x 25' | LOW 6' CLEAR TRUNK |
| | SYAGRUS ROMANZOFFIANUM QUEEN PALM | 2 | 12" BTH 35' x 20' | MOD |
| | EXISTING TREES TO REMAIN PROTECT IN PLACE | 10 | | |
| SHRUBS: | | | | |
| | ALOE STRIATULA HARDY ALOE | 42 | 1 GALLON 2' x 2' | LOW |
| | ANIGOZANTHOS 'BIG RED' KANGAROO PAW | 87 | 1 GALLON 2' x 2' | LOW |
| | CERATOSTIGMA PLUMBAGINOIDEDES DWARF PLUMBAGO | 26 | 1 GALLON 8" x 18" | MOD |
| | DIETES G. 'VARIEGATA' VARIEGATED FORTNIGHT LILY | 8 | 5 GALLON 4" x 3" | MOD |
| | ILEX VOMITORIA 'NANA' DWARF YAUPON | 110 | 5 GALLON 3' x 3" | LOW |
| | KALANCHOE PUMILA FLOWER DUST PLANT | 84 | 1 GALLON 18" x 18" | LOW |
| | LANTANA 'NEW GOLD' LANTANA | 41 | 1 GALLON 2' x 4' | LOW |
| | LEYMUS C. 'CANYON PRINCE' CANYON PRINCE BLUE LIME GRASS | 49 | 1 GALLON 3' x 3' | LOW |
| | MUHLENBERGIA C. 'ROYAL MIST' REGAL MIST MUHLY GRASS | 197 | 1 GALLON 2' x 2' | LOW |
| | ROSMARINUS O. 'PROSTRATUS' PROSTRATE ROSMARY | 36 | 1 GALLON 2' x 4' | LOW |
| VINES: | | | | |
| | PARTHENOCISSUS TRICUSPIDATA BOSTON IVY | 2 | 5 GALLON | MOD |
| GROUNDCOVER: | | | | |
| | DYMONDIA MARGARETAE DYMONDIA | | FLATS @ 12" O.C. | LOW |

NOTES:
 PLANTING AREAS SHALL BE MULCHED WITH A THREE INCH (3") MINIMUM LAYER OF ORGANIC WOOD MULCH.
 ALL NEW TREES WITHIN 5' OF HARDSCAPE SHALL BE INSTALLED WITH LINEAR DEEP ROOT BARRIERS, 24" DEEP.
 IRRIGATION SYSTEM FOR NEW AREAS WILL BE DRIP WITH A WEATHER BASED CONTROLLER.

MAXIMUM APPLIED WATER ALLOWANCE
 $(50.5)(0.62)(0.45 \times 7,944) = 111,927.0 \text{ GAL./YR.}$

TOTAL LANDSCAPE AREA = 7,944 SQ. FT.

ESTIMATED TOTAL WATER USE
 LOW $(50.5)(0.62)(.2/.81 \times 4,774) = 37,368.4 \text{ G.P.Y.}$
 MOD $(50.5)(0.62)(.5/.81 \times 3,170) = 61,536.7 \text{ G.P.Y.}$
 ETWU = 98,905.1 G.P.Y.



THOMAS H. KOCH
 LANDSCAPE ARCHITECT

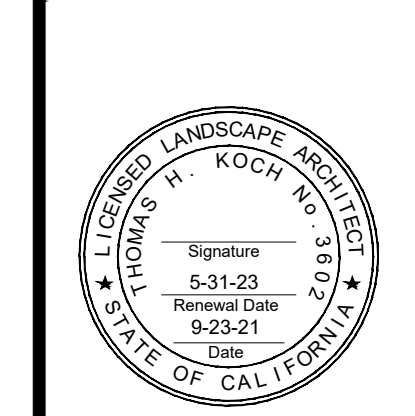
26482 Elmcrest Way
 Lake Forest, CA 92630
 (949) 348-9150
 thk@cox.net

CA License 3602
 AZ Registration 33915

| NO | REVISION DESCRIPTION | DATE |
|----|----------------------|------|
| | | |

DEVELOPER/OWNER:
PANERA LLC
 3630 SOUTH Geyer Road, Suite 100
 ST. LOUIS, MO 63127
 (314) 984-2646

THE PROFESSIONAL, WHOSE SIGNATURE AND PERSONAL SEAL APPEAR HEREON, HAS PREPARED THIS PLAN AND SPECIFICATIONS FOR THE LANDSCAPE DESIGN AND CONSTRUCTION OF THE PROJECT. THE PROFESSIONAL IS NOT RESPONSIBLE FOR ANY ERRORS OR OMISSIONS IN THIS PLAN OR SPECIFICATIONS, ESTIMATES, REPORTS, OR OTHER DOCUMENTS OR INSTRUMENTS NOT PREPARED BY THE PROFESSIONAL. THIS PLAN AND SPECIFICATIONS SHALL BE USED ONLY FOR THE PROJECT AND PARCELS OF THE PROJECT TO WHICH THIS PLAN AND SPECIFICATIONS RELATE.



PANERA BAKERY CAFE #6239

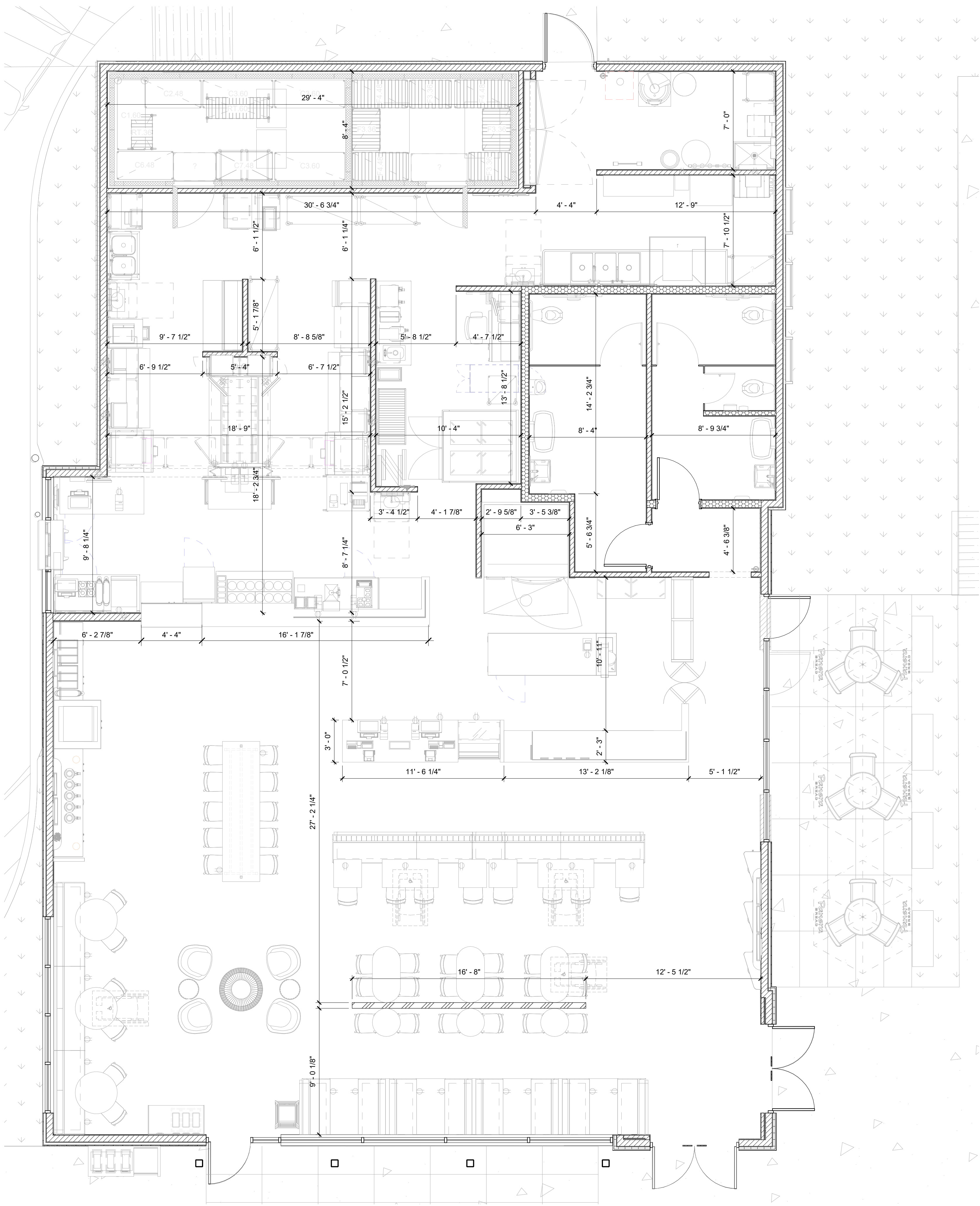
5220 MORENO STREET
 MONTCLAIR, CA 91763

CONCEPTUAL LANDSCAPE PLAN

+ ST. LOUIS
 1155 1/2 5th Street
 Suite 100
 St. Louis, MO 63103
 314.984.9887 tel/
 314.984.9887 fax

COLE
 CIVIL ENGINEERING / SURVEYING / PLANNING / LANDSCAPE ARCHITECTURE
 604 S. Main Street, Suite 200, St. Louis, MO 63103

| | |
|----------------|--------------|
| DESIGN/CALC BY | CAW |
| DRAWN BY | CAW |
| CHECKED BY | CAW |
| DRAWING SCALE | |
| DATE | 08/26/2021 |
| Job Number | 17-0037-000A |
| Sheet Number | L1.0 |



#6239 MONTCLAIR, CA

CAFE INFORMATION
 CAL 133 REQUIRED
 CO2 MONITORING REQUIRED

SEATING AND SQUAER FOOTING BREAKDOWN
 TOTAL SQUARE FEET: 3,950 GROSS SQ. FT.
 FRONT OF HOUSE: 2,085 SQ. FT.
 BACK OF HOUSE: 1,865 SQ. FT.
 PATIO: 741 SQ. FT.

SEATING BREAKDOWN
 INTERIOR SEAT COUNT: 62
 INTERIOR TABLE COUNT: 21
 2 TOPS: 7 (33%)
 3 TOPS: 0
 4+ TOPS: 14 (66%)

EXTERIOR SEATING:
 EXTERIOR SEAT COUNT: 27
 EXTERIOR TABLE COUNT: 10

Bakery-Cafe:

#6239

SYSTEM: HCM
 Project Team:

An Ingenium International Company

325 N. La Salle Street, Suite 500
 Chicago, IL 60604 U.S.A
 norr.com

William J. Akammyer, P.E.
 353 Marshall Avenue
 St. Louis, Missouri 63119
 Phone (314) 772-1782
 Fax (314) 373-3514

Engineering Consultant

Professional Seal:

LICENSED ARCHITECT
 GEORGE SAM PHILLIPS-SORICH
 NO. C-31078
 08-31-2023 RENEWAL DATE
 10.06.2021

Project Title:

Bakery Cafe #6239
5220 MORENO STREET
MONTCLAIR, CA 91763



COPYRIGHT (C) NORR, INC. ALL RIGHTS RESERVED. NO PART OF THIS DOCUMENT MAY BE REPRODUCED, STORED IN A RETRIEVAL SYSTEM, OR TRANSMITTED IN ANY FORM OR BY ANY MEANS, ELECTRONIC, MECHANICAL, PHOTOCOPYING, RECORDING, OR OTHERWISE, WITHOUT THE EXPRESS WRITTEN CONSENT OF NORR INC. ANY MODIFICATIONS MADE TO THIS DOCUMENT WITHOUT THE WRITTEN PERMISSION OF NORR INC. SHALL RENDER IT INVALID AND UNUSABLE. THIS DRAWING HAS BEEN PREPARED SOLELY FOR THE USE OF PANERA BREAD AND THERE ARE NO REPRESENTATIONS OF ANY KIND MADE BY NORR INC. TO ANY PARTY WITH WHOM NORR INC. HAS NOT ENTERED INTO A CONTRACT.

| No. | Description | Date |
|-----|-------------------|----------|
| 1 | ENTITLEMENT DOCS. | 10/06/21 |
| | | |
| | | |
| | | |

FLOOR PLAN

Project Number: _____ Sheet Number: _____
 NICH20_0363
 Drawn By: _____
 NORR
 Issue Date: **8.23.2021**

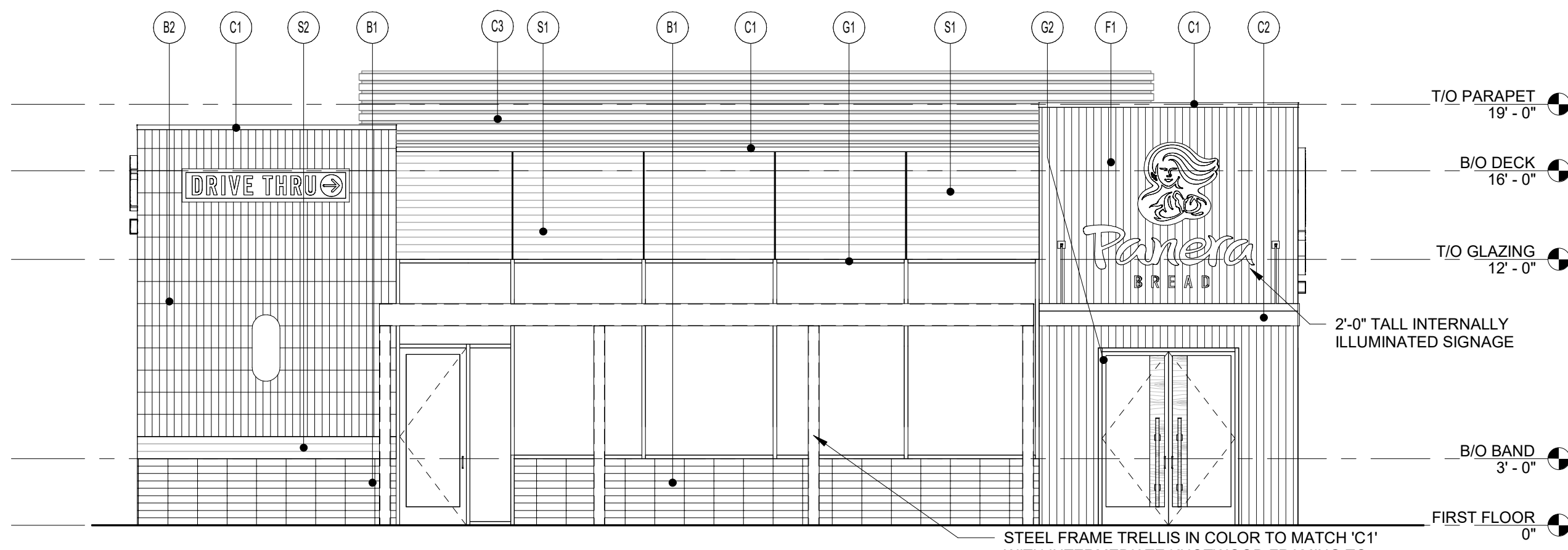
A1

PM DPM DM CPM
 DC JK IO CT

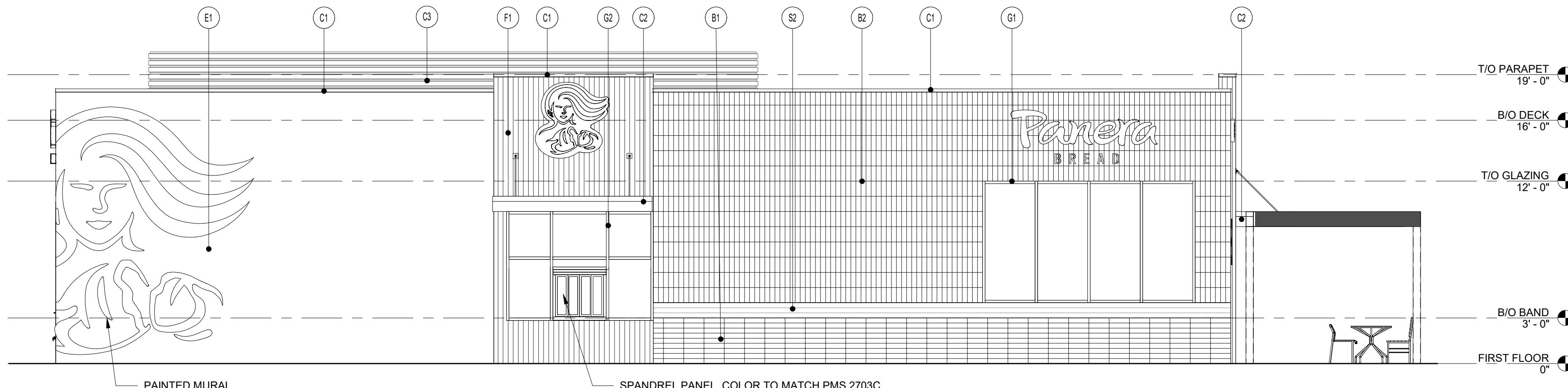
10/8/2021 4:40:43 PM

PS 2019.06

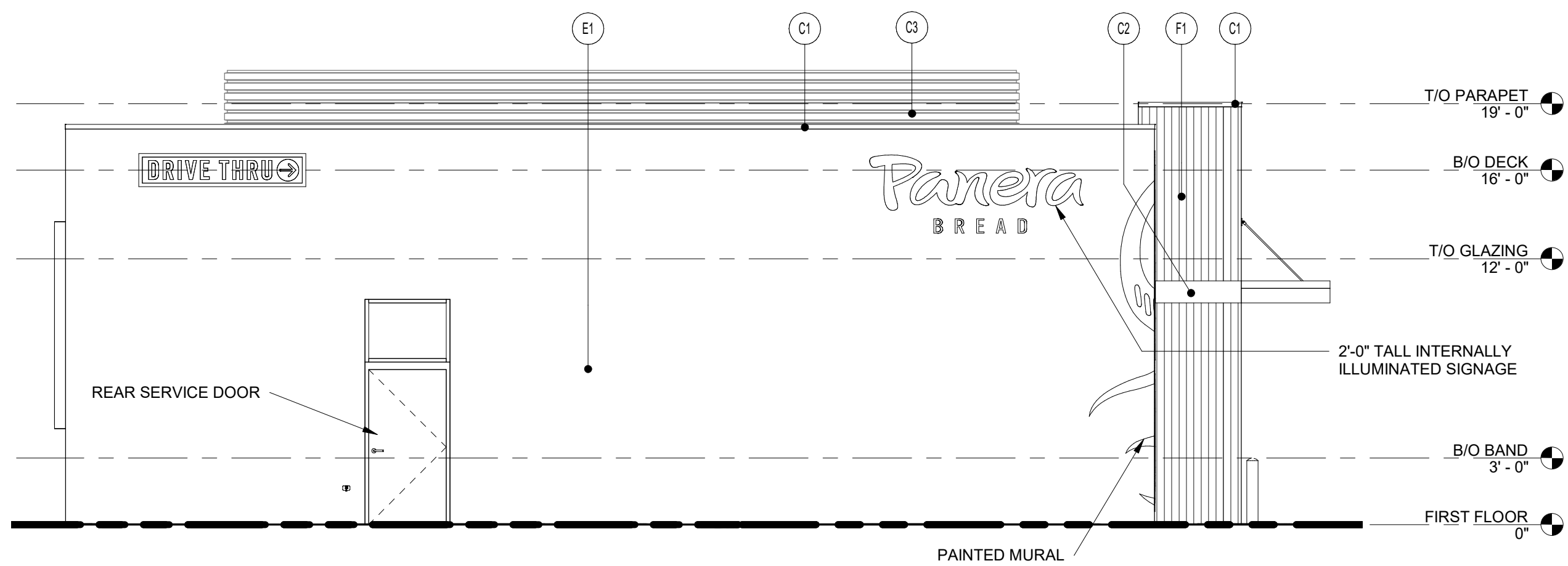
1 FLOOR PLAN
 1/4" = 1'-0"



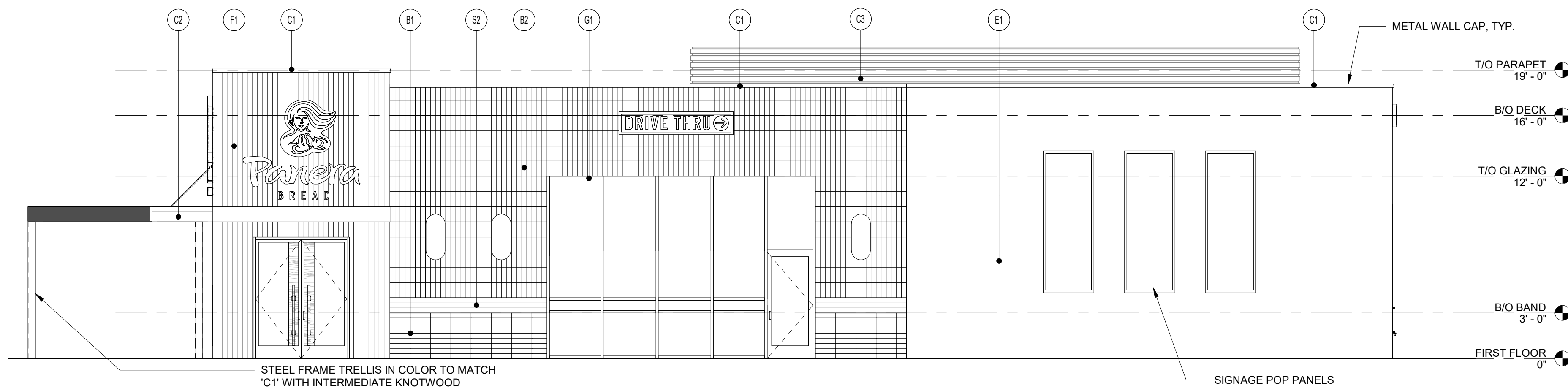
21 SOUTH ELEVATION
3/16" = 1'-0"



22 WEST ELEVATION
3/16" = 1'-0"



23 NORTH ELEVATION
3/16" = 1'-0"



24 EAST ELEVATION
3/16" = 1'-0"

EXTERIOR MATERIALS:

- (B1) THIN BRICK SYSTEM; MCNEAR BRICK & BLOCK
3/4" X 3 5/8" X 11 5/8", STACK BOND
COLOR: SANTIAGO CREATIVE MATERIALS BLEND
- (B2) THIN BRICK SYSTEM; MCNEAR BRICK & BLOCK
3/4" X 3 5/8" X 11 5/8", STACK BOND
COLOR: SANTIAGO CREATIVE MATERIALS BLEND
- (C1) PRE-FINISHED METAL COPING
COLOR: MATCH RAL 7043
- (C2) PRE-FINISHED ALUMINUM CANOPY
COLOR: MATCH PMS 2411C
- (C3) PRE-FINISHED ALUMINUM SCREENING
COLOR: MATCH RAL 7043
- (E1) EXTERIOR INSULATION AND FINISH SYSTEM (EIFS)
TEXTURE TO MATCH DRYVIT LIMESTONE
COLOR: DRYVIT #105 SUEDE
- (F1) FIBERGLASS REINFORCED PANEL
MFR: FORMGLAS; FORMGLAS FRP
FINISH: BASF UNO, COLOR: MATCH PMS 2307C
- (G1) ALUMINUM STOREFRONT
KAWNEER, 2" X 4-1/2" PROFILE (OR APPROVED EQUAL)
FINISH: POWDERCOAT, COLOR: COLONIAL WHITE
GLAZING: 1" INSULATED CLEAR GLASS
- (G2) ALUMINUM STOREFRONT
KAWNEER, 2" X 4-1/2" PROFILE (OR APPROVED EQUAL)
COLOR: MATCH PMS 2307C
GLAZING: 1" INSULATED CLEAR GLASS
- (S1) ALUMINUM WOOD LOOK
KNOTWOOD, CLADDING SYSTEM
COLOR: WHITE ASH
- (S2) ALUMINUM WOOD LOOK
KNOTWOOD, SELF MATING CLADDING SYSTEM
COLOR: WHITE ASH

Bakery-Cafe:

#6239

SYSTEM: HCM

Project Team:

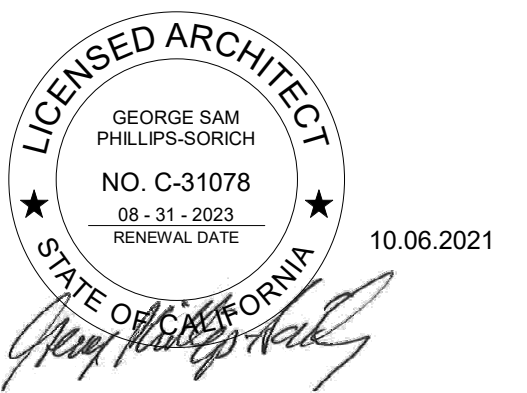
NORR

An Ingenium International Company

325 N. La Salle Street, Suite 500
Chicago, IL 60654 U.S.A
nor.com



Professional Seal:



Project Title:

Bakery Cafe #6239
5220 MORENO STREET
MONTCLAIR, CA 91763



COPYRIGHT (C) NORR, INC. ALL RIGHTS RESERVED. NO PART OF THIS DOCUMENT MAY BE REPRODUCED, STORED IN A RETRIEVAL SYSTEM, OR TRANSMITTED IN ANY FORM OR BY ANY MEANS, ELECTRONIC, MECHANICAL, PHOTOCOPYING, RECORDING, OR OTHERWISE, WITHOUT THE EXPRESS WRITTEN CONSENT OF NORR INC. ANY MODIFICATIONS MADE TO THIS DOCUMENT WITHOUT THE WRITTEN PERMISSION OF NORR INC. SHALL RENDER IT INVALID AND UNUSABLE. THIS DRAWING HAS BEEN PREPARED SOLELY FOR THE USE OF PANERA BREAD AND THERE ARE NO REPRESENTATIONS OF ANY KIND MADE BY NORR INC. TO ANY PARTY WITH WHOM NORR INC. HAS NOT ENTERED INTO A CONTRACT.

| No. | Description | Date |
|-----|-------------------|----------|
| 1 | ENTITLEMENT DOCS. | 10/06/21 |
| | | |
| | | |
| | | |

EXTERIOR ELEVATIONS

Project Number: _____ Sheet Number: _____

NICH20_0363

Drawn By: _____

NORR

Issue Date: **8.23.2021**

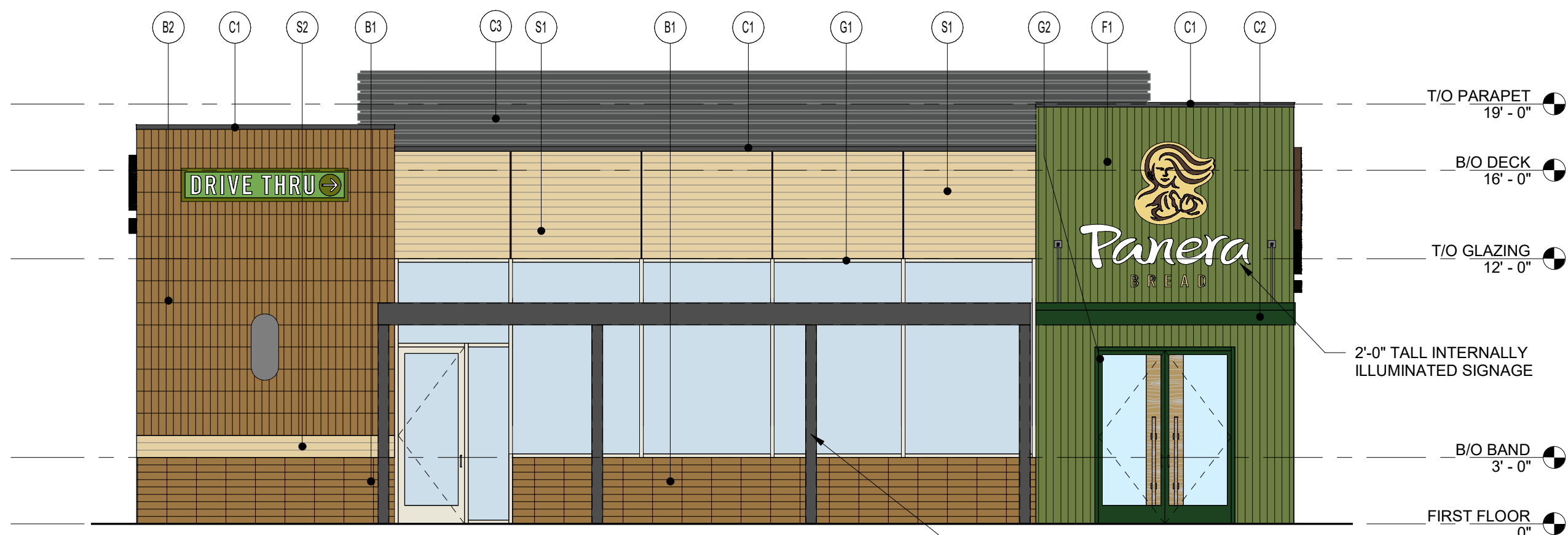
PM DPM DM CPM

DC JK IO CT

A2

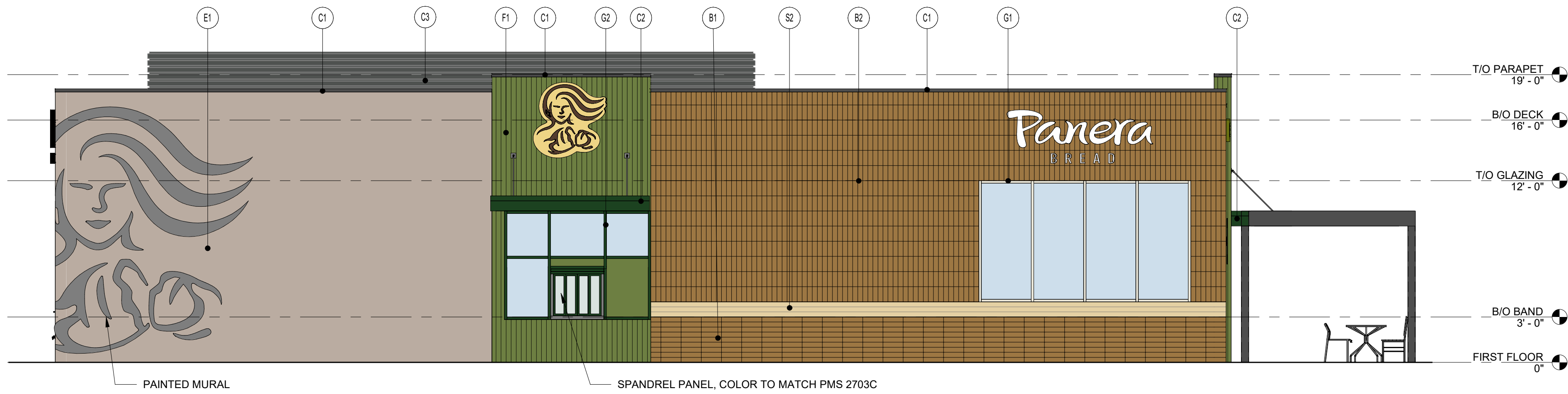
10/8/2021 4:40:48 PM

PG 2015.05



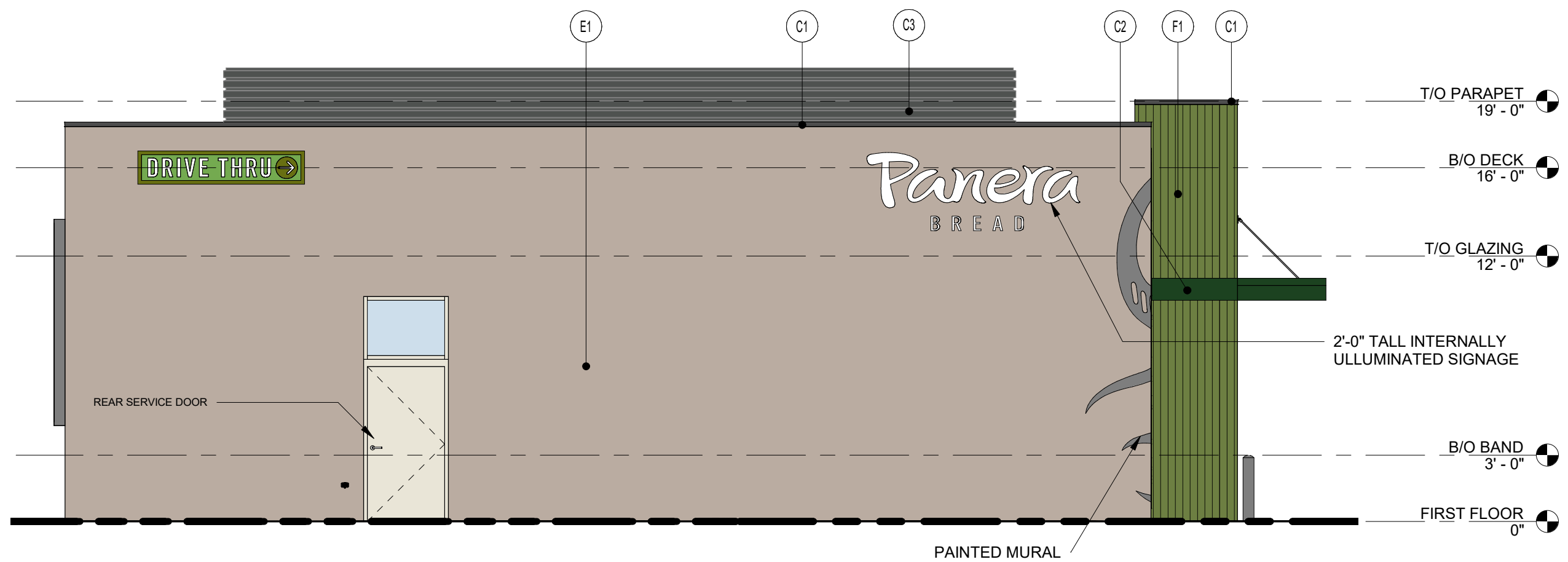
21 SOUTH ELEVATION
3/16" = 1'-0"

STEEL FRAME TRELLIS IN COLOR TO MATCH 'C1' WITH INTERMEDIATE KNOTWOOD FRAMING TO MATCH 'S1'



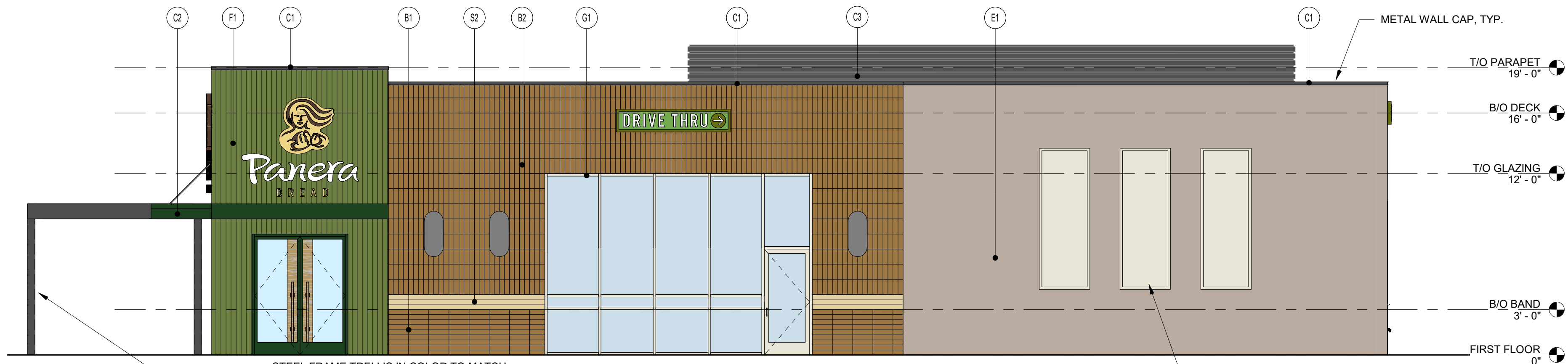
22 WEST ELEVATION
3/16" = 1'-0"

SPANDREL PANEL, COLOR TO MATCH PMS 2703C



23 NORTH ELEVATION
3/16" = 1'-0"

PAINTED MURAL



24 EAST ELEVATION
3/16" = 1'-0"

STEEL FRAME TRELLIS IN COLOR TO MATCH 'C1' WITH INTERMEDIATE KNOTWOOD FRAMING TO MATCH 'S1'

SIGNAGE POP PANELS

EXTERIOR MATERIALS:

- (B1) THIN BRICK SYSTEM; MCNEAR BRICK & BLOCK
3/4" X 3 5/8" X 11 5/8", STACK BOND
COLOR: SANTIAGO CREATIVE MATERIALS BLEND
- (B2) THIN BRICK SYSTEM; MCNEAR BRICK & BLOCK
3/4" X 3 5/8" X 11 5/8", STACK BOND
COLOR: SANTIAGO CREATIVE MATERIALS BLEND
- (C1) PRE-FINISHED METAL COPING
COLOR: MATCH RAL 7043
- (C2) PRE-FINISHED ALUMINUM CANOPY
COLOR: MATCH PMS 2411C
- (C3) PRE-FINISHED ALUMINUM SCREENING
COLOR: MATCH RAL 7043
- (E1) EXTERIOR INSULATION AND FINISH SYSTEM (EIFS)
TEXTURE TO MATCH DRYVIT LIMESTONE
COLOR: DRYVIT #105 SUEDE
- (F1) FIBERGLASS REINFORCED PANEL
MFR: FORMGLAS, FORMGLAS FRP
FINISH: BASF UNO, COLOR: MATCH PMS 2307C
- (G1) ALUMINUM STOREFRONT
KAWNEER, 2" X 4-1/2" PROFILE (OR APPROVED EQUAL)
FINISH: POWDERCOAT, COLOR: COLONIAL WHITE
GLAZING: 1" INSULATED CLEAR GLASS
- (G2) ALUMINUM STOREFRONT
KAWNEER, 2" X 4-1/2" PROFILE (OR APPROVED EQUAL)
COLOR: MATCH PMS 2307C
GLAZING: 1" INSULATED CLEAR GLASS
- (S1) ALUMINUM WOOD LOOK
KNOTWOOD, CLADDING SYSTEM
COLOR: WHITE ASH
- (S2) ALUMINUM WOOD LOOK
KNOTWOOD, SELF MATING CLADDING SYSTEM
COLOR: WHITE ASH

EXTERIOR MATERIALS:



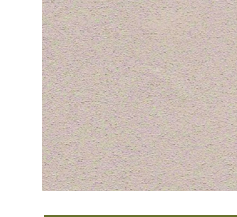
- (B1) THIN BRICK SYSTEM; MCNEAR BRICK & BLOCK
3/4" X 3 5/8" X 11 5/8", STACK BOND
COLOR: SANTIAGO CREATIVE MATERIALS BLEND
- (B2) THIN BRICK SYSTEM; MCNEAR BRICK & BLOCK
3/4" X 3 5/8" X 11 5/8", STACK BOND
COLOR: SANTIAGO CREATIVE MATERIALS BLEND



- (C1) PRE-FINISHED METAL COPING
COLOR: MATCH RAL 7043



- (C2) PRE-FINISHED ALUMINUM CANOPY
COLOR: MATCH PMS 2411C



- (E1) EXTERIOR INSULATION AND FINISH SYSTEM (EIFS)
TEXTURE TO MATCH DRYVIT LIMESTONE
COLOR: DRYVIT #105 SUEDE



- (F1) FIBERGLASS REINFORCED PANEL
MFR: FORMGLAS, FORMGLAS FRP
FINISH: BASF UNO, COLOR: MATCH PMS 2307C



- (G1) ALUMINUM STOREFRONT
KAWNEER, 2" X 4-1/2" PROFILE (OR APPROVED EQUAL)
FINISH: POWDERCOAT, COLOR: COLONIAL WHITE
GLAZING: 1" INSULATED CLEAR GLASS



- (S1) ALUMINUM WOOD LOOK
KNOTWOOD, CLADDING SYSTEM
COLOR: WHITE ASH



- (S2) ALUMINUM WOOD LOOK
KNOTWOOD, SELF MATING CLADDING SYSTEM
COLOR: WHITE ASH

Bakery-Cafe:

#6239

SYSTEM: HCM

Project Team:

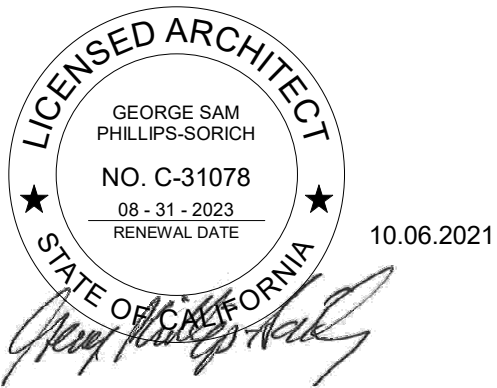
NORR

An Ingenium International Company

325 N. La Salle Street, Suite 500
Chicago, IL 60654 U.S.A
nor.com



Professional Seal:



Project Title:

ENTITLEMENT SUBMITTAL
Bakery Cafe #6239
5220 MORENO STREET
MONTCLAIR, CA 91763



COPYRIGHT (C) NORR, INC. ALL RIGHTS RESERVED. NO PART OF THIS DOCUMENT MAY BE REPRODUCED, STORED IN A RETRIEVAL SYSTEM, OR TRANSMITTED IN ANY FORM OR BY ANY MEANS, ELECTRONIC, MECHANICAL, PHOTOCOPIING, RECORDING, OR OTHERWISE, WITHOUT THE EXPRESS WRITTEN CONSENT OF NORR INC. ANY MODIFICATIONS MADE TO THIS DOCUMENT WITHOUT THE WRITTEN PERMISSION OF NORR INC. SHALL RENDER IT INVALID AND UNUSABLE. THIS DRAWING HAS BEEN PREPARED SOLELY FOR THE USE OF PANERA BREAD AND THERE ARE NO REPRESENTATIONS OF ANY KIND MADE BY NORR INC. TO ANY PARTY WITH WHOM NORR INC. HAS NOT ENTERED INTO A CONTRACT.

| No. | Description | Date |
|-----|-------------------|----------|
| 1 | ENTITLEMENT DOCS. | 10/06/21 |
| | | |
| | | |
| | | |

COLOR EXTERIOR ELEVATIONS

Project Number: NICH20_0363
 Drawn By: NORR
 Issue Date: 8.23.2021
 Sheet Number: **A3**

PM: DC DPM: JK DM: IO CPM: CT

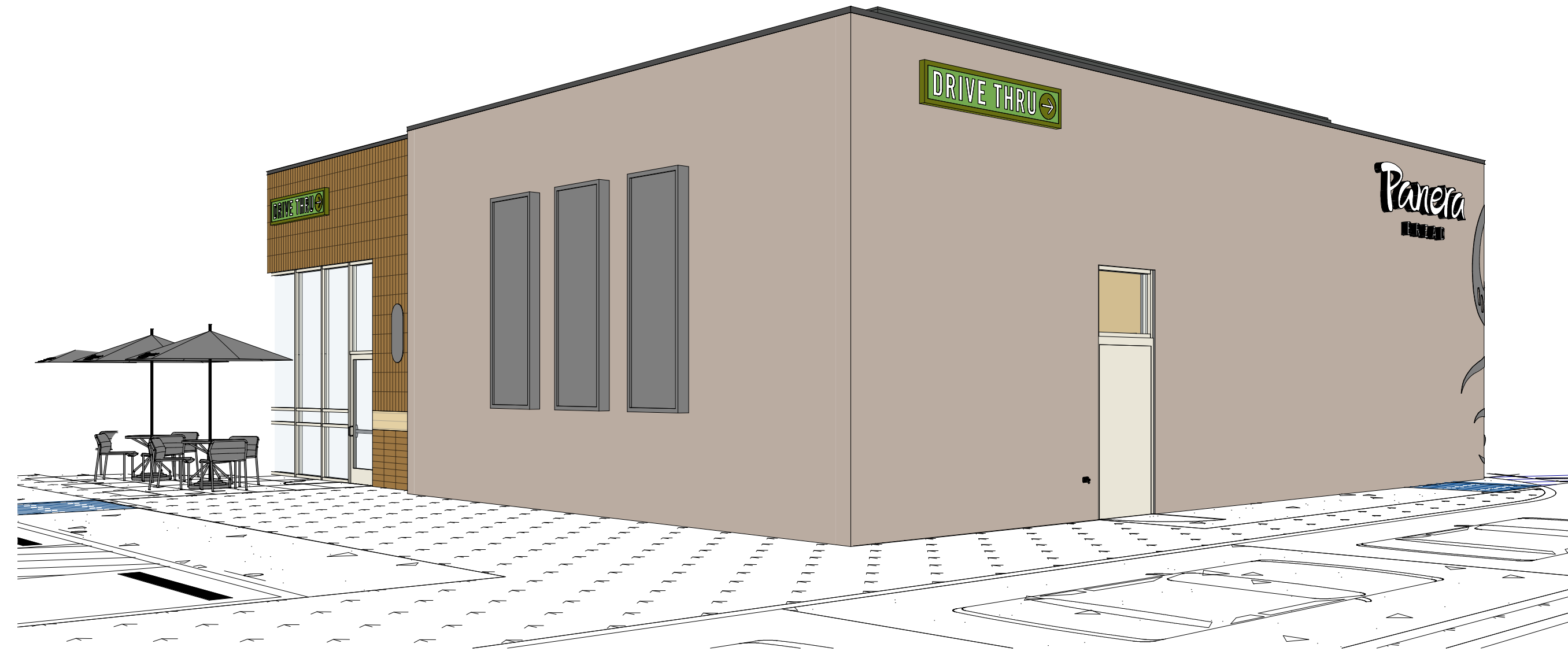
10/8/2021 4:40:58 PM

PG 2015.06

10/8/2021 4:41:41 PM



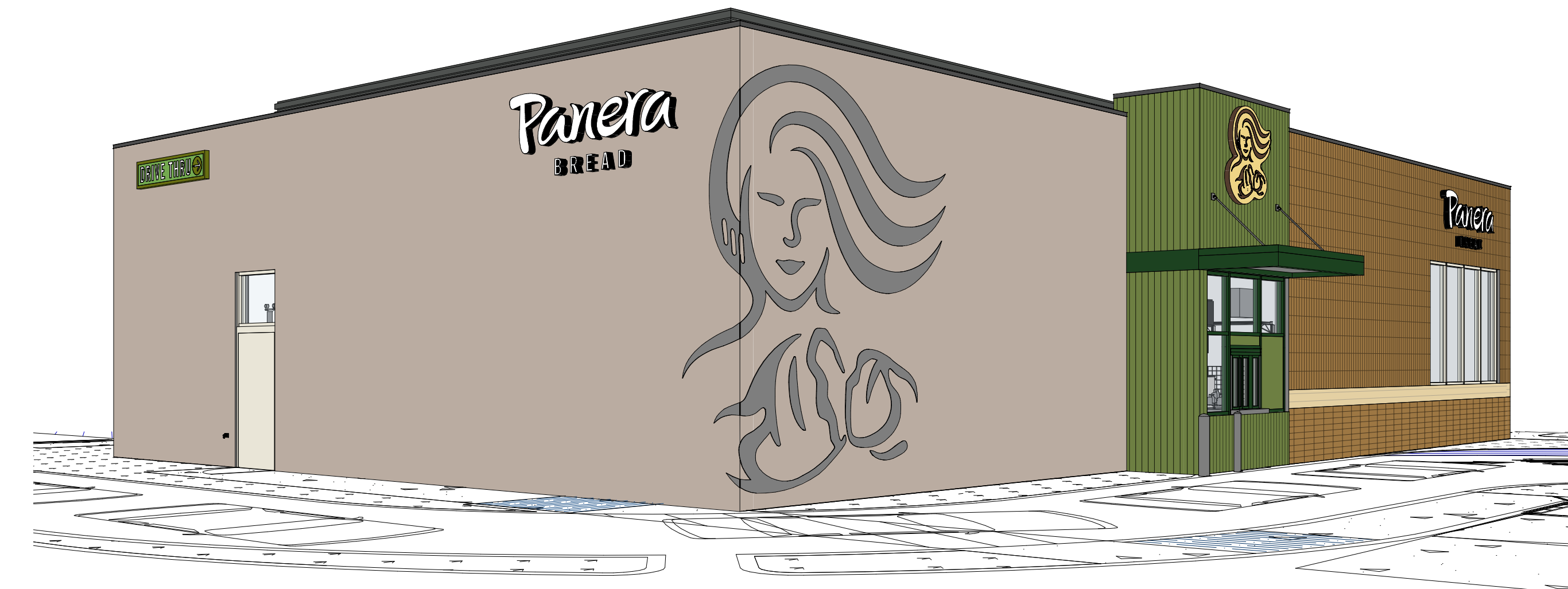
1 | 3D View 3 - ENTITLEMENTS



3 | 3D View 5 - ENTITLEMENTS



2 | 3D View 4 - ENTITLEMENTS



4 | 3D View 6 - ENTITLEMENTS

Bakery-Cafe:

#6239

SYSTEM: HCM

Project Team:

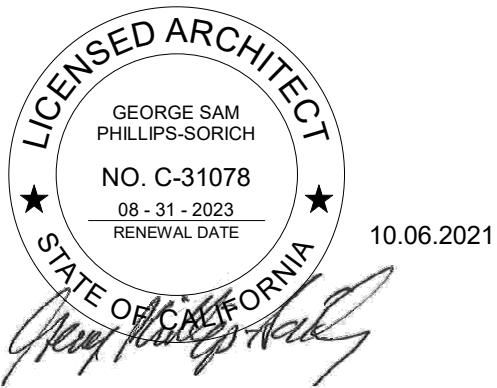
NORR

An Ingenium International Company

325 N. La Salle Street, Suite 500
Chicago, IL 60654 U.S.A
nor.com



Professional Seal:



Project Title:

Bakery Cafe #6239
5220 MORENO STREET
MONTCLAIR, CA 91763

ENTITLEMENT SUBMITTAL



COPYRIGHT (C) NORR, INC. ALL RIGHTS RESERVED. NO PART OF THIS DOCUMENT MAY BE REPRODUCED, STORED IN A RETRIEVAL SYSTEM, OR TRANSMITTED IN ANY FORM OR BY ANY MEANS, ELECTRONIC, MECHANICAL, PHOTOCOPYING, RECORDING, OR OTHERWISE, WITHOUT THE EXPRESS WRITTEN CONSENT OF NORR, INC. ANY MODIFICATIONS MADE TO THIS DOCUMENT WITHOUT THE WRITTEN PERMISSION OF NORR, INC. SHALL RENDER IT INVALID AND UNUSABLE. THIS DRAWING HAS BEEN PREPARED SOLELY FOR THE USE OF PANERA BREAD AND THERE ARE NO REPRESENTATIONS OF ANY KIND MADE BY NORR, INC. TO ANY PARTY WITH WHOM NORR, INC. HAS NOT ENTERED INTO A CONTRACT.

| No. | Description | Date |
|-----|-------------------|----------|
| | ENTITLEMENT DOCS. | 10/06/21 |
| | | |
| | | |

PERSPECTIVES

Project Number: _____ Sheet Number: _____

NICH20_0363 _____

Drawn By: _____

NORR _____

Issue Date: **8.23.2021**

PM DPM DM CPM:

DC JK IO CT

A4

PS 2019.06

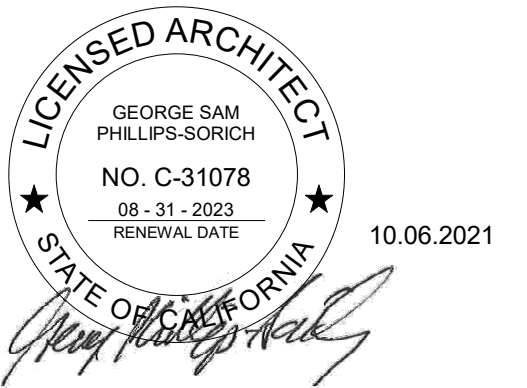


An Ingenium International Company

325 N. La Salle Street, Suite 500
Chicago, IL 60604 U.S.A
nor.com



Professional Seal:



Project Title:

ENTITLEMENT SUBMITTAL

Bakery Cafe #6239
5220 MORENO STREET
MONTCLAIR, CA 91763



COPYRIGHT (C) NORR, INC. ALL RIGHTS RESERVED. NO PART OF THIS DOCUMENT MAY BE REPRODUCED, STORED IN A RETRIEVAL SYSTEM, OR TRANSMITTED IN ANY FORM OR BY ANY MEANS, ELECTRONIC, MECHANICAL, PHOTOCOPYING, RECORDING, OR OTHERWISE, WITHOUT THE EXPRESS WRITTEN CONSENT OF NORR INC. ANY MODIFICATIONS MADE TO THIS DOCUMENT WITHOUT THE WRITTEN PERMISSION OF NORR INC. SHALL RENDER IT INVALID AND UNUSABLE.
THIS DRAWING HAS BEEN PREPARED SOLELY FOR THE USE OF PANERA BREAD AND THERE ARE NO REPRESENTATIONS OF ANY KIND MADE BY NORR INC. TO ANY PARTY WITH WHOM NORR INC. HAS NOT ENTERED INTO A CONTRACT.

| No. | Description | Date |
|-----|-------------------|----------|
| 1 | ENTITLEMENT DOCS. | 10/06/21 |
| | | |
| | | |
| | | |

PHOTOMETRIC PLAN

Project Number: _____ Sheet Number: _____

NICH20_0363

Drawn By: _____

NORR

Issue Date: _____

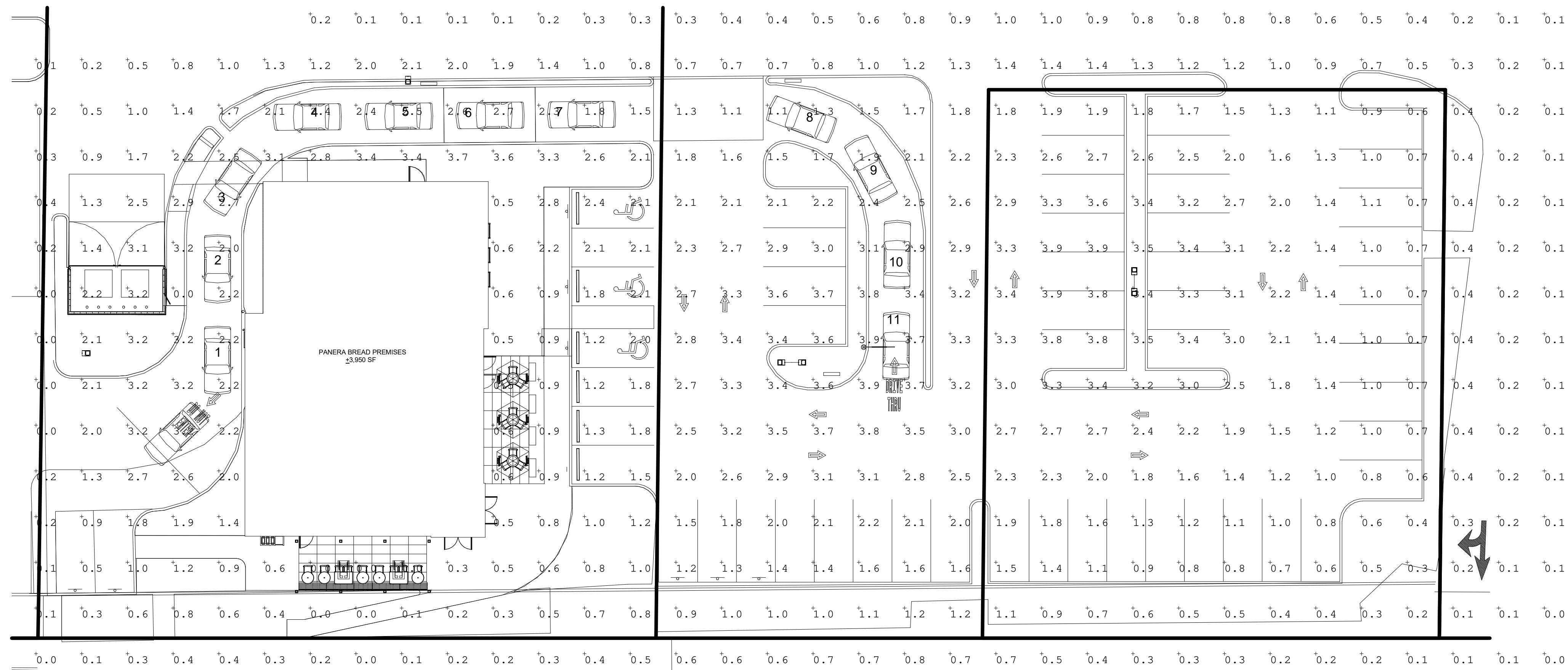
8.23.2021

PM DPM DM CPM:
DC JK IO CT

A5

| Symbol | Qty | Label | Arrangement | [MANUFAC] | Description | LLF | Luminaire Lumens | Luminaire Watts | Total Watts | Mounting Height |
|--------|-----|-----------|-------------|-------------------|--------------------------------------------------|-------|------------------|-----------------|-------------|-----------------|
| □ | 2 | EXT30 BLC | Single | Lithonia Lighting | DSX1 LED P4 40K BLC MVOLT SPA PIRH1FC3V DDBXD | 0.980 | 11877 | 125 | 250 | 25 |
| □-□ | 2 | EXT30 T5M | Back-Back | Lithonia Lighting | DSX1 LED P4 30K T5M MVOLT SPA PIRH1FC3V DDBXD | 0.980 | 13961 | 125 | 500 | 25 |

| Label | CalcType | Units | Avg | Max | Min |
|-------------|-------------|-------|------|-----|-----|
| Entire Site | Illuminance | Fc | 1.46 | 3.9 | 0.0 |



10/8/2021 4:41:42 PM