

---

# **Appendix B**

## Biological Resources Attachments



---

# **Appendix B-1**

## Site Photographs

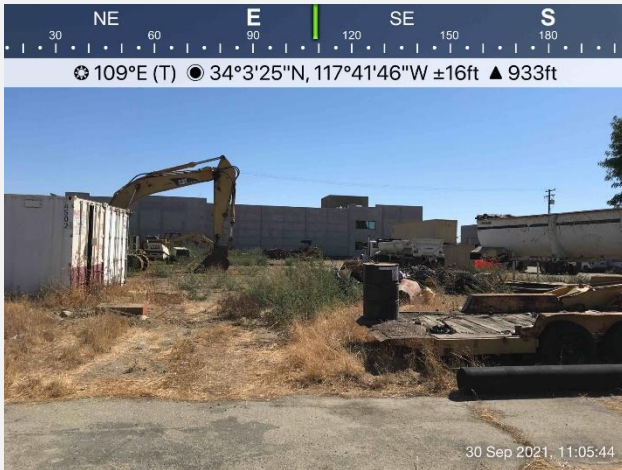




**Photo 1.** Developed pre-existing parking lot with ornamental trees in background.



**Photo 2.** Disturbed non-native annual grassland



**Photo 3.** Disturbed area along the northeastern portion of the project site.



**Photo 4.** Developed pre-existing building with ornamental trees adjacent.



---

## **Appendix B-2**

### Wildlife Potential to Occur





Scientific Name	Common Name	Status <sup>1</sup> (Federal/State/Other)	Habitat	Potential to Occur <sup>3</sup>
<b>Amphibians</b>				
<i>Anaxyrus californicus</i>	arroyo toad	FE/SSC	Semi-arid areas near washes, sandy riverbanks, riparian areas, palm oasis, Joshua tree, mixed chaparral and sagebrush; stream channels for breeding (typically third order); adjacent stream terraces and uplands for foraging and wintering	Not expected to occur. The Study Area lacks the suitable wetland habitat for this species to occur.
<i>Batrachoseps gabrieli</i>	San Gabriel slender salamander	None/None	Talus slopes in forested areas, often near streams	Not expected to occur. The Study Area lacks the suitable wetland habitat for this species to occur.
<i>Ensatina eschscholtzii klauberi</i>	large-blotched salamander	None/WL	Moist and shaded evergreen and deciduous woodlands	Not expected to occur. The Study Area lacks the suitable wetland habitat for this species to occur
<i>Rana boylei</i>	foothill yellow-legged frog	None/SSC, SE	Rocky streams and rivers with open banks in forest, chaparral, and woodland	Not expected to occur. The Study Area lacks the suitable wetland habitat for this species to occur
<i>Rana muscosa</i>	mountain yellow-legged frog	FE/SE, WL	Lakes, ponds, meadow streams, isolated pools, and open riverbanks; rocky canyons in narrow canyons and in chaparral	Not expected to occur. The Study Area lacks the suitable wetland habitat for this species to occur
<i>Spea hammondi</i>	western spadefoot	None/SSC	Primarily grassland and vernal pools, but also in ephemeral wetlands that persist at least 3 weeks in chaparral, coastal scrub, valley-foothill woodlands, pastures, and other agriculture	Not expected to occur. The Study Area lacks the suitable wetland habitat for this species to occur
<i>Taricha torosa</i> (Monterey Co. south only)	California newt	None/SSC	Wet forests, oak forests, chaparral, and rolling grassland	Not expected to occur. The Study Area lacks the suitable wetland habitat for this species to occur
<b>Reptiles</b>				

## APPENDIX B-2

## ASSESSMENT OF SPECIAL-STATUS WILDLIFE SPECIES POTENTIALLY OCCURRING IN THE STUDY AREA

Scientific Name	Common Name	Status <sup>1</sup> (Federal/State/Other)	Habitat	Potential to Occur <sup>3</sup>
<i>Actinemys marmorata</i>	western pond turtle	None/SSC	Slow-moving permanent or intermittent streams, ponds, small lakes, and reservoirs with emergent basking sites; adjacent uplands used for nesting and during winter	Not expected to occur. The Study Area lacks the suitable wetland habitat for this species to occur.
<i>Anniella stebbinsi</i>	southern California legless lizard	None/SSC	Coastal dunes, stabilized dunes, beaches, dry washes, valley-foothill, chaparral, and scrubs; pine, oak, and riparian woodlands; associated with sparse vegetation and moist sandy or loose, loamy soils	Not expected to occur. Although the Study Area contains sandy loam soils, it is highly disturbed with developed/urbanized adjacent areas.
<i>Arizona elegans occidentalis</i>	California glossy snake	None/SSC	Commonly occurs in desert regions throughout southern California. Prefers open sandy areas with scattered brush. Also found in rocky areas.	Not expected to occur. Although the Study Area contains sandy loamy soils; it is highly disturbed with developed/urbanized adjacent areas.
<i>Aspidoscelis hyperythra</i>	orange-throated whiptail	None/WL	Low-elevation coastal scrub, chaparral, and valley-foothill hardwood	Not expected to occur. No suitable habitat is found within the Study Area.
<i>Aspidoscelis tigris stejnegeri</i>	coastal whiptail	None/SSC	Hot and dry areas with sparse foliage, including chaparral, woodland, and riparian areas.	Not expected to occur. No suitable habitat is found within the Study Area.
<i>Coleonyx variegatus abbotti</i>	San Diego banded gecko	None/SSC	Rocky areas within coastal scrub and chaparral	Not expected to occur. No suitable habitat is found within the Study Area.
<i>Crotalus ruber</i>	red diamondback rattlesnake	None/SSC	Coastal scrub, chaparral, oak and pine woodlands, rocky grasslands, cultivated areas, and desert flats	Not expected to occur. No suitable habitat is found within the Study Area.

APPENDIX B-2

ASSESSMENT OF SPECIAL-STATUS WILDLIFE SPECIES POTENTIALLY OCCURRING IN THE STUDY AREA

Scientific Name	Common Name	Status <sup>1</sup> (Federal/State/Other)	Habitat	Potential to Occur <sup>3</sup>
<i>Phrynosoma blainvillii</i>	Blainville's horned lizard	None/SSC	Open areas of sandy soil in valleys, foothills, and semi-arid mountains including coastal scrub, chaparral, valley-foothill hardwood, conifer, riparian, pine-cypress, juniper, and annual grassland habitats	Not expected to occur. Although the Study Area contains sandy loamy soils; it is highly disturbed with developed/urbanized adjacent areas. Additionally, there is no suitable habitat for this species to occur.
<i>Salvadora hexalepis virgultea</i>	coast patch-nosed snake	None/SSC	Brushy or shrubby vegetation; requires small mammal burrows for refuge and overwintering sites	Not expected to occur. No suitable habitat is found within the Study Area. Additionally, no small mammal burrows were observed during the September 2021 site visit.
<i>Thamnophis hammondi</i>	two-striped gartersnake	None/SSC	Streams, creeks, pools, streams with rocky beds, ponds, lakes, vernal pools	Not expected to occur. No suitable habitat is found within the Study Area.
<b>Birds</b>				
<i>Accipiter cooperii</i> (nesting)	Cooper's hawk	None/WL	Nests and forages in dense stands of live oak, riparian woodlands, or other woodland habitats often near water	Not expected to occur. No suitable woodland or riparian habitat is found within the Study Area.
<i>Agelaius tricolor</i> (nesting colony)	tricolored blackbird	BCC/PSE, SSC	Nests near freshwater, emergent wetland with cattails or tules, but also in Himalayan blackberry; forages in grasslands, woodland, and agriculture	Not expected to occur. No suitable wetland habitat is found within the Study Area.
<i>Aimophila ruficeps canescens</i>	Southern California rufous-crowned sparrow	None/WL	Nests and forages in open coastal scrub and chaparral with low cover of scattered scrub interspersed with rocky and grassy patches	Not expected to occur. No suitable habitat is found within the Study Area.
<i>Ammodramus savannarum</i> (nesting)	grasshopper sparrow	<i>Ammodramus savannarum</i> (nesting)	Nests and forages in moderately open grassland with tall forbs or scattered shrubs used for perches	Not expected to occur. No suitable habitat is found within the Study Area.

APPENDIX B-2

ASSESSMENT OF SPECIAL-STATUS WILDLIFE SPECIES POTENTIALLY OCCURRING IN THE STUDY AREA

Scientific Name	Common Name	Status <sup>1</sup> (Federal/State/Other)	Habitat	Potential to Occur <sup>3</sup>
<i>Aquila chrysaetos</i> (nesting & wintering)	golden eagle	<i>Aquila chrysaetos</i> (nesting & wintering)	Nests and winters in hilly, open/semi-open areas, including shrublands, grasslands, pastures, riparian areas, mountainous canyon land, open desert rimrock terrain; nests in large trees and on cliffs in open areas and forages in open habitats	Not expected to occur. No suitable habitat is found within the Study Area.
<i>Artemisiospiza belli belli</i>	Bell's sage sparrow	BCC/WL	Nests and forages in coastal scrub and dry chaparral; typically in large, unfragmented patches dominated by chamise; nests in more dense patches but uses more open habitat in winter	Not expected to occur. No suitable habitat is found within the Study Area.
<i>Asio otus</i> (nesting)	long-eared owl	BCC/SSC	Nests in riparian habitat, live oak thickets, other dense stands of trees, edges of coniferous forest; forages in nearby open habitats	Not expected to occur. No suitable habitat is found within the Study Area.
<i>Athene cunicularia</i> (burrow sites & some wintering sites)	burrowing owl	BCC/SSC	Nests and forages in grassland, open scrub, and agriculture, particularly with ground squirrel burrows	Low potential to occur. Although the north western portion of the Study Area has a flat open grassland, the soils are highly disturbed with non-native vegetation. Additionally, no burrows were observed during the September 2021 site visit.

APPENDIX B-2

ASSESSMENT OF SPECIAL-STATUS WILDLIFE SPECIES POTENTIALLY OCCURRING IN THE STUDY AREA

Scientific Name	Common Name	Status <sup>1</sup> (Federal/State/Other)	Habitat	Potential to Occur <sup>3</sup>
<i>Buteo swainsoni</i> (nesting)	Swainson's hawk	BCC/ST	Nests in open woodland and savanna, riparian, and in isolated large trees; forages in nearby grasslands and agricultural areas such as wheat and alfalfa fields and pasture	Low potential to occur. The Study Area is within a highly urbanized area and the grassland on site provides marginal foraging habitat for the species. An observation was made 1.7 miles away at a nearby park (eBird 2021).
<i>Coccyzus americanus occidentalis</i> (nesting)	western yellow-billed cuckoo	FT, BCC/SE	Nests in dense, wide riparian woodlands and forest with well-developed understories	Not expected to occur. The Study Area lacks the riparian habitat suitable for this species to occur.
<i>Coturnicops noveboracensis</i>	yellow rail	BCC/SSC	Nesting requires wet marsh/sedge meadows or coastal marshes with wet soil and shallow, standing water	Not expected to occur. The Study Area lacks the suitable wetland habitat for this species to occur.
<i>Cypseloides niger</i> (nesting)	black swift	BCC/SSC	Nests in moist crevices, caves, and cliffs behind or adjacent to waterfalls in deep canyons; forages over a wide range of habitats	Not expected to occur. The Study Area lacks the suitable structures needed for this species to nest and lacks the habitat for this species to occur.
<i>Elanus leucurus</i> (nesting)	white-tailed kite	None/FP	Nests in woodland, riparian, and individual trees near open lands; forages opportunistically in grassland, meadows, scrubs, agriculture, emergent wetland, savanna, and disturbed lands	Not expected to occur. The Study Area is within a highly urbanized area and the grassland on site provides marginal foraging habitat for the species.
<i>Empidonax traillii extimus</i> (nesting)	southwestern willow flycatcher	FE/SE	Nests in dense riparian habitats along streams, reservoirs, or wetlands; uses variety of riparian and shrubland habitats during migration	Not expected to occur. The Study Area lacks the wetland habitat for this species to occur.

APPENDIX B-2

ASSESSMENT OF SPECIAL-STATUS WILDLIFE SPECIES POTENTIALLY OCCURRING IN THE STUDY AREA

Scientific Name	Common Name	Status <sup>1</sup> (Federal/State/Other)	Habitat	Potential to Occur <sup>3</sup>
<i>Eremophila alpestris actia</i>	California horned lark	None/WL	This subspecies of horned lark occurs on the state's southern and central coastal slope and in the San Joaquin Valley. Nests and forages in grasslands, disturbed lands, agriculture, and beaches.	Not expected to occur. The Study Area is within a highly urbanized area and the grassland on site provides marginal breeding and foraging habitat for the species.
<i>Falco columbarius</i> (wintering)	merlin	None/WL	Forages in semi-open areas, including coastline, grassland, agriculture, savanna, woodland, lakes, and wetlands	Not expected to occur. The Study Area is within a highly urbanized area and the grassland on site provides marginal foraging habitat for the species.
<i>Icteria virens</i> (nesting)	yellow-breasted chat	None/SSC	Nests and forages in dense, relatively wide riparian woodlands and thickets of willows, vine tangles, and dense brush	Not expected to occur. The Study Area lacks the suitable riparian habitat for this species to occur.
<i>Laterallus jamaicensis coturniculus</i>	California black rail	BCC/ST, FP	Tidal marshes, shallow freshwater margins, wet meadows, and flooded grassy vegetation; suitable habitats are often supplied by canal leakage in Sierra Nevada foothill populations	Not expected to occur. The Study Area lacks the suitable aquatic habitat for this species to occur.
<i>Polioptila californica californica</i>	coastal California gnatcatcher	FT/SSC	Nests and forages in various sage scrub communities, often dominated by California sagebrush and buckwheat; generally avoids nesting in areas with a slope of greater than 40%; majority of nesting at less than 1,000 feet above mean sea level	Not expected to occur. No suitable sage scrub habitat is found within the Study Area. The nearest CNDDDB occurrence is approximately 3.2 miles west of the Study Area from the early 1900's and is likely extirpated (CDFW 2021).

APPENDIX B-2

ASSESSMENT OF SPECIAL-STATUS WILDLIFE SPECIES POTENTIALLY OCCURRING IN THE STUDY AREA

Scientific Name	Common Name	Status <sup>1</sup> (Federal/State/Other)	Habitat	Potential to Occur <sup>3</sup>
<i>Setophaga petechia</i> (nesting)	yellow warbler	BCC/SSC	Nests and forages in riparian and oak woodlands, montane chaparral, open ponderosa pine, and mixed-conifer habitats	Not expected to occur. No suitable habitat is found within the Study Area.
<i>Vireo bellii pusillus</i> (nesting)	least Bell's vireo	FE/SE	Nests and forages in low, dense riparian thickets along water or along dry parts of intermittent streams; forages in riparian and adjacent shrubland late in nesting season	Not expected to occur. The Study Area lacks the suitable riparian habitat for this species to occur. The nearest CNDDDB occurrence is approximately 1 mile south of the Study Area within the Santa Ana River (CDFW 2021).
<b>Fishes</b>				
<i>Catostomus santaanae</i>	Santa Ana sucker	FT/None	Small, shallow, cool, clear streams less than 7 meters (23 feet) in width and a few centimeters to more than a meter (1.5 inches to more than 3 feet) in depth; substrates are generally coarse gravel, rubble, and boulder	Not expected to occur. The Study Area lacks the suitable aquatic habitat for this species to occur.
<i>Gila orcuttii</i>	arroyo chub	None/SSC	Warm, fluctuating streams with slow-moving or backwater sections of warm to cool streams at depths >40 centimeters (16 inches); substrates of sand or mud	Not expected to occur. The Study Area lacks the suitable aquatic habitat for this species to occur.
<i>Oncorhynchus mykiss irideus</i> pop. 10	southern steelhead - southern California DPS	FE/None	Clean, clear, cool, well-oxygenated streams; needs relatively deep pools in migration and gravelly substrate to spawn	Not expected to occur. The Study Area lacks the suitable aquatic habitat for this species to occur.
<i>Rhinichthys osculus</i> ssp. 3	Santa Ana speckled dace	None/SSC	Headwaters of the Santa Ana and San Gabriel Rivers; may be extirpated from the Los Angeles River system	Not expected to occur. The Study Area lacks the suitable aquatic habitat for this species to occur.
<b>Mammals</b>				

APPENDIX B-2

ASSESSMENT OF SPECIAL-STATUS WILDLIFE SPECIES POTENTIALLY OCCURRING IN THE STUDY AREA

Scientific Name	Common Name	Status <sup>1</sup> (Federal/State/Other)	Habitat	Potential to Occur <sup>3</sup>
<i>Aeorestes cinereus</i>	northern hoary bat	None/None	Forest, woodland riparian, and wetland habitats; also juniper scrub, riparian forest, and desert scrub in arid areas; roosts in tree foliage and sometimes cavities, such as woodpecker holes	Not expected to occur. No suitable habitat is found within the Study Area.
<i>Antrozous pallidus</i>	pallid bat	None/SSC	Grasslands, shrublands, woodlands, forests; most common in open, dry habitats with rocky outcrops for roosting, but also roosts in man-made structures and trees	Not expected to occur. No suitable habitat is found within the Study Area.
<i>Chaetodipus fallax fallax</i>	northwestern San Diego pocket mouse	None/SSC	Coastal scrub, mixed chaparral, sagebrush, desert wash, desert scrub, desert succulent shrub, pinyon-juniper, and annual grassland	Not expected to occur. The Study Area is within a highly urbanized area and the grassland is highly disturbed and composed of non-native species.
<i>Dasypterus xanthinus</i>	western yellow bat	None/SSC	Valley-foothill riparian, desert riparian, desert wash, and palm oasis habitats; below 2,000 feet above mean sea level; roosts in riparian and palms	Not expected to occur. Although there are palms within the Study Area, there is no suitable riparian or desert wash habitat needed for this species to occur.
<i>Dipodomys merriami parvus</i>	San Bernardino kangaroo rat	FE/SSC	Sparse scrub habitat, alluvial scrub/coastal scrub habitats on gravelly and sandy soils near river and stream terraces	Not expected to occur. Although there are sandy loam soils within the Study Area, there is no suitable alluvial or coastal scrub habitat present.
<i>Dipodomys stephensi</i>	Stephens' kangaroo rat	FE/ST	Annual and perennial grassland habitats, coastal scrub or sagebrush with sparse canopy cover, or in disturbed areas	Not expected to occur. The Study Area is within a highly urbanized area and the grassland on site provides marginal foraging habitat for the species.



APPENDIX B-2

ASSESSMENT OF SPECIAL-STATUS WILDLIFE SPECIES POTENTIALLY OCCURRING IN THE STUDY AREA

Scientific Name	Common Name	Status <sup>1</sup> (Federal/State/Other)	Habitat	Potential to Occur <sup>3</sup>
<i>Eumops perotis californicus</i>	western mastiff bat	None/SSC	Chaparral, coastal and desert scrub, coniferous and deciduous forest and woodland; roosts in crevices in rocky canyons and cliffs where the canyon or cliff is vertical or nearly vertical, trees, and tunnels	Not expected to occur. No suitable habitat is found within the Study Area.
<i>Lepus californicus bennettii</i>	San Diego black-tailed jackrabbit	None/SSC	Arid habitats with open ground; grasslands, coastal scrub, agriculture, disturbed areas, and rangelands	Low potential to occur. Although there is a small disturbed grassland found within the Study Area, it is isolated by development and lacks other natural open areas.
<i>Myotis yumanensis</i>	Yuma myotis	None/None	Riparian, arid scrublands and deserts, and forests associated with water (streams, rivers, tinajas); roosts in bridges, buildings, cliff crevices, caves, mines, and trees	Not expected to occur. No suitable habitat is found within the Study Area.
<i>Neotoma lepida intermedia</i>	San Diego desert woodrat	None/SSC	Coastal scrub, desert scrub, chaparral, cacti, rocky areas	Not expected to occur. No suitable habitat is found within the Study Area.
<i>Nyctinomops femorosaccus</i>	pocketed free-tailed bat	None/SSC	Pinyon-juniper woodlands, desert scrub, desert succulent shrub, desert riparian, desert wash, alkali desert scrub, Joshua tree, and palm oases; roosts in high cliffs or rock outcrops with drop-offs, caverns, and buildings	Not expected to occur. No suitable habitat is found within the Study Area and the onsite building does not provide roosting opportunities (holes into the interior or eaves).
<i>Nyctinomops macrotis</i>	big free-tailed bat	None/SSC	Rocky areas; roosts in caves, holes in trees, buildings, and crevices on cliffs and rocky outcrops; forages over water	Not expected to occur. No suitable habitat is found within the Study Area, there are few trees, and the onsite building does not provide roosting opportunities (holes into the interior or eaves).

APPENDIX B-2

ASSESSMENT OF SPECIAL-STATUS WILDLIFE SPECIES POTENTIALLY OCCURRING IN THE STUDY AREA

Scientific Name	Common Name	Status <sup>1</sup> (Federal/State/Other)	Habitat	Potential to Occur <sup>3</sup>
<i>Ovis canadensis nelsoni</i>	Nelson's bighorn sheep	None/FP	Steep slopes and cliffs, rough and rocky topography, sparse vegetation; also canyons, washes, and alluvial fans	Not expected to occur. The Study Area lacks suitable habitat for this species to occur and it is outside the montane range of the species.
<i>Perognathus longimembris brevinasus</i>	Los Angeles pocket mouse	None/SSC	Lower-elevation grassland, alluvial sage scrub, and coastal scrub	Not expected to occur. The grassland within the Study Area is extremely disturbed and composed of non-native species, and the Study Area is small and isolated from natural open space. The nearest CNDDDB occurrence is 9.7 miles east of the Study Area (CDFW 2021).
<i>Taxidea taxus</i>	American badger	None/SSC	Dry, open, treeless areas; grasslands, coastal scrub, agriculture, and pastures, especially with friable soils	Not expected to occur. There is no suitable habitat for this species to occur. The open areas within the Study Area are extremely disturbed and composed of non-native species, and the Study Area is small and isolated from natural open space. Additionally, no potential burrows were observed during the September 2021 site visit.
<b>Invertebrates</b>				
<i>Atractelmis wawona</i>	Wawona riffle beetle	None/None	Aquatic; found in riffles of rapid, small to medium clear mountain streams; 2,000 to 5,000 feet above mean sea level	Not expected to occur. There are no water resources within the area to support this species.
<i>Bombus crotchii</i>	Crotch bumble bee	None/PSE	Open grassland and scrub communities supporting suitable floral resources.	Not expected to occur. The Study Area is dominated by development. The minimal vegetation onsite does not contain suitable host plants preferred by this species.

APPENDIX B-2

ASSESSMENT OF SPECIAL-STATUS WILDLIFE SPECIES POTENTIALLY OCCURRING IN THE STUDY AREA

Scientific Name	Common Name	Status <sup>1</sup> (Federal/State/Other)	Habitat	Potential to Occur <sup>3</sup>
<i>Callophrys mossii hidakupa</i>	San Gabriel Mountains elfin butterfly	None/None	Endemic to San Gabriel and San Bernardino Mountains at elevations of 3,000 to 5,000 feet above mean sea level; southern mixed evergreen forest; foodplant is broadleaf stonecrop ( <i>Sedum spathulifolium</i> )	Not expected to occur. The Study Area is not within the adequate elevation range.
<i>Euchloe hyantis andrewsi</i>	Andrew's marble butterfly	None/None	Yellow pine forest; host plants are Laguna Mountains jewel-flower ( <i>Streptanthus bernardinus</i> ) and Holboell's rockcress ( <i>Boechera pinetorum</i> ( <i>Arabis holboellii</i> var. <i>pinetorum</i> ))	Not expected to occur. The Study Area is dominated by non-native vegetation and lacks the host plants preferred by this species.
<i>Euphydryas editha quino</i>	quino checkerspot butterfly	FE/None	Annual forblands, grassland, open coastal scrub and chaparral; often soils with cryptogamic crusts and fine-textured clay; host plants include <i>Plantago erecta</i> , <i>Antirrhinum coulterianum</i> , and <i>Plantago patagonica</i> (Silverado Occurrence Complex)	Not expected to occur. The grassland within the Study Area is extremely disturbed and lacks the host plants preferred by this species. The nearest CNDDDB occurrence is 1.76 miles north west of the Study Area (CDFW 2021).
<i>Rhaphiomidas terminatus abdominalis</i>	Delhi Sands flower-loving fly	FE/None	Delhi fine sandy soils and dunes, scrub and ruderal vegetation in the sand verbena series with <50% cover	Not expected to occur. This Study Area is just outside of its current geographic range (USFW 2021). Although there are sandy soils onsite, the Study Area lacks the Delhi fine sandy soils preferred by this species (USDA 2021). The nearest CNDDDB occurrence is east of the Study Area in a non-specified area that is likely extirpated (CDFW 2021).
<i>Streptocephalus woottoni</i>	Riverside fairy shrimp	FE/None	Vernal pools, non-vegetated ephemeral pools	Not expected to occur. No suitable habitat is found within the Study Area.

<sup>1</sup> Status Notes:  
FE: Federally Endangered

## APPENDIX B-2

### ASSESSMENT OF SPECIAL-STATUS WILDLIFE SPECIES POTENTIALLY OCCURRING IN THE STUDY AREA

---

FT: Federally Threatened  
FC: Federal Candidate  
BCC: U.S. Fish and Wildlife Service Bird of Conservation Concern  
SSC: California Species of Special Concern  
FP: California Fully Protected Species  
WL: California Watch List Species  
SE: State Endangered  
ST: State Threatened  
SS: List Special Animals List, but no other status  
H: High  
HM: High-Medium  
M: Medium  
LM: Low-Medium  
L: Low

## References

CDFW (California Department of Fish and Wildlife). 2021. California Natural Diversity Database (CNDDDB). RareFind, Version 5.2.14 (commercial subscription). Sacramento, California: CDFW, Biogeographic Branch. Accessed January 2021.  
<http://www.dfg.ca.gov/biogeodata/cnddb/rarefind.asp>.

eBird. 2021. An online database of bird distribution and abundance. eBird, Ithaca, New York. Accessed October 2021. <https://ebird.org/>

U.S Department of Agriculture (USDA) 2021. Natural Resource Conservation Service (NRCS) Web Soil Survey. Accessed October 2021.  
<https://websoilsurvey.sc.egov.usda.gov/App/WebSoilSurvey.aspx>.

USFWS (U.S Fish and Wildlife Service) 2021. Environmental Conservation Online System. (ECOS). Accessed January 2021.  
<https://ecos.fws.gov/ecp/species/1540>



---

# **Appendix B-3**

## Plant Potential to Occur





APPENDIX B-3

SPECIAL-STATUS PLANT SPECIES POTENTIAL TO OCCUR WITHIN THE STUDY AREA

Scientific Name	Common Name	Status <sup>1</sup> (Federal/State/CRPR/)	Primary Habitat Associations/ Life Form/ Blooming Period/ Elevation Range (feet)	Potential to Occur
<i>Abronia villosa</i> <i>var. aurita</i>	chaparral sand- verbena	None/None/1B.1	Chaparral, Coastal scrub, Desert dunes; sandy/annual herb/(Jan)Mar-Sep/246- 5,245	Not expected to occur. No suitable habitat is present for this species to occur.
<i>Androsace</i> <i>elongata ssp.</i> <i>acuta</i>	California androsace	None/None/4.2	Chaparral, Cismontane woodland, Coastal scrub, Meadows and seeps, Pinyon and juniper woodland, Valley and foothill grassland/annual herb/Mar-June/492- 4,280	Low potential to occur. No suitable habitat within the Study Area. Although there is a disturbed grassland, it is densely dominated by non- native species and not suitable for this species to occur.
<i>Arctostaphylos</i> <i>glandulosa ssp.</i> <i>gabrielensis</i>	San Gabriel manzanita	None/None/1B.2	Chaparral (rocky)/perennial evergreen shrub/Mar/1,950-4,920	Not expected to occur. The site is outside of the species' known elevation range and there is no suitable vegetation present.
<i>Asplenium</i> <i>vespertinum</i>	western spleenwort	None/None/4.2	Chaparral, Cismontane woodland, Coastal scrub; rocky/perennial rhizomatous herb/Feb- June/591-3,280	Not expected to occur. No suitable habitat is present for this species to occur.
<i>Astragalus</i> <i>brauntonii</i>	Braunton's milk- vetch	FE/None/1B.1	Chaparral, Coastal scrub, Valley and foothill grassland; recent burns or disturbed areas, usually sandstone with carbonate layers/perennial herb/Jan-Aug/13-2,095	Low potential to occur. No suitable habitat within the Study Area. Although there is a disturbed grassland, it is densely dominated by non- native species and not suitable for this species to occur. .

APPENDIX B-3

SPECIAL-STATUS PLANT SPECIES POTENTIAL TO OCCUR WITHIN THE STUDY AREA

Scientific Name	Common Name	Status <sup>1</sup> (Federal/State/CRPR/)	Primary Habitat Associations/ Life Form/ Blooming Period/ Elevation Range (feet)	Potential to Occur
<i>Atriplex coulteri</i>	Coulter's saltbush	None/None/1B.2	Coastal bluff scrub, Coastal dunes, Coastal scrub, Valley and foothill grassland; alkaline or clay/perennial herb/Mar–Oct/10–1,505	Low potential to occur. No suitable habitat within the Study Area. Although there is a disturbed grassland, it is densely dominated by non-native species and not suitable for this species to occur. .
<i>Berberis nevinii</i>	Nevin's barberry	FE/SE/1B.1	Chaparral, Cismontane woodland, Coastal scrub, Riparian scrub; sandy or gravelly/perennial evergreen shrub/(Feb)Mar–June/230–2,705	Not expected to occur. Although there are sandy soils present, there is no suitable habitat present for this species to occur.
<i>Brodiaea filifolia</i>	thread-leaved brodiaea	FT/SE/1B.1	Chaparral (openings), Cismontane woodland, Coastal scrub, Playas, Valley and foothill grassland, Vernal pools; often clay/perennial bulbiferous herb/Mar–June/82–3,670	Not expected to occur. No suitable habitat is present for this species to occur.
<i>Calochortus catalinae</i>	Catalina mariposa lily	None/None/4.2	Chaparral, Cismontane woodland, Coastal scrub, Valley and foothill grassland/perennial bulbiferous herb/(Feb)Mar–June/49–2,295	Not expected to occur. No suitable habitat is present for this species to occur.

APPENDIX B-3

SPECIAL-STATUS PLANT SPECIES POTENTIAL TO OCCUR WITHIN THE STUDY AREA

Scientific Name	Common Name	Status <sup>1</sup> (Federal/State/CRPR/)	Primary Habitat Associations/ Life Form/ Blooming Period/ Elevation Range (feet)	Potential to Occur
<i>Calochortus clavatus</i> var. <i>gracilis</i>	slender mariposa lily	None/None/1B.2	Chaparral, Coastal scrub, Valley and foothill grassland/perennial bulbiferous herb/Mar-June(Nov)/1,045-3,280	Not expected to occur. Although there is a grassland onsite, it is highly disturbed and dominated by non-native vegetation.
<i>Calochortus plummerae</i>	Plummer's mariposa lily	None/None/4.2	Chaparral, Cismontane woodland, Coastal scrub, Lower montane coniferous forest, Valley and foothill grassland; granitic, rocky/perennial bulbiferous herb/May-July/328-5,575	Not expected to occur. Although there is a grassland onsite, it is highly disturbed and dominated by non-native vegetation.
<i>Calochortus weedii</i> var. <i>intermedius</i>	intermediate mariposa lily	None/None/1B.2	Chaparral, Coastal scrub, Valley and foothill grassland; rocky, calcareous/perennial bulbiferous herb/May-July/344-2,805	Not expected to occur. Although there is a grassland onsite, it is highly disturbed and dominated by non-native vegetation.
<i>Calystegia felix</i>	lucky morning-glory	None/None/1B.1	Meadows and seeps (sometimes alkaline), Riparian scrub (alluvial); Historically associated with wetland and marshy places, but possibly in drier situations as well. Possibly silty loam and alkaline/annual rhizomatous herb/Mar-Sep/98-705	Not expected to occur. No suitable habitat is present for this species to occur.

APPENDIX B-3

SPECIAL-STATUS PLANT SPECIES POTENTIAL TO OCCUR WITHIN THE STUDY AREA

Scientific Name	Common Name	Status <sup>1</sup> (Federal/State/CRPR/)	Primary Habitat Associations/ Life Form/ Blooming Period/ Elevation Range (feet)	Potential to Occur
<i>Calystegia sepium</i> ssp. <i>binghamiae</i>	Santa Barbara morning-glory	None/None/1A	Marshes and swamps (coastal)/perennial rhizomatous herb/Aug/16-15	Not expected to occur. The site is outside of the species' known elevation range and there is no suitable vegetation present.
<i>Camissoniopsis lewisii</i>	Lewis' evening-primrose	None/None/3	Coastal bluff scrub, Cismontane woodland, Coastal dunes, Coastal scrub, Valley and foothill grassland; sandy or clay/annual herb/Mar-May(June)/0-985	Not expected to occur. Although there is a grassland onsite, it is highly disturbed and dominated by non-native vegetation.
<i>Castilleja gleasoni</i>	Mt. Gleason paintbrush	None/SR/1B.2	Chaparral, Lower montane coniferous forest, Pinyon and juniper woodland; granitic/perennial herb (hemiparasitic)/May-June(Sep)/2,180-7,115	Not expected to occur. The site is outside of the species' known elevation range and there is no suitable vegetation present.
<i>Centromadia pungens</i> ssp. <i>laevis</i>	smooth tarplant	None/None/1B.1	Chenopod scrub, Meadows and seeps, Playas, Riparian woodland, Valley and foothill grassland; alkaline/annual herb/Apr-Sep/0-2,095	Low potential to occur. Although there is a grassland onsite, it is highly disturbed and dominated by non-native vegetation. The nearest CNDDDB occurrence is 0.61 miles northeast of the Project Site.

APPENDIX B-3

SPECIAL-STATUS PLANT SPECIES POTENTIAL TO OCCUR WITHIN THE STUDY AREA

Scientific Name	Common Name	Status <sup>1</sup> (Federal/State/CRPR/)	Primary Habitat Associations/ Life Form/ Blooming Period/ Elevation Range (feet)	Potential to Occur
<i>Chorizanthe parryi</i> var. <i>parryi</i>	Parry's spineflower	None/None/1B.1	Chaparral, Cismontane woodland, Coastal scrub, Valley and foothill grassland; sandy or rocky, openings/annual herb/Apr–June/902–4,000	Not expected to occur. Although there is a grassland onsite, it is highly disturbed and dominated by non-native vegetation.
<i>Cladium californicum</i>	California sawgrass	None/None/2B.2	Meadows and seeps, Marshes and swamps Alkaline or Freshwater/perennial rhizomatous herb/June–Sep/197–5,245	Not expected to occur. No suitable habitat is present for this species to occur.
<i>Claytonia peirsonii</i> ssp. <i>peirsonii</i>	Peirson's spring beauty	None/None/1B.2	subalpine coniferous forest, upper montane coniferous forest; granitic, metamorphic, scree, talus/perennial herb/(Mar) May–June/4,950–9,005	Not expected to occur. The site is outside of the species' known elevation range and there is no suitable vegetation present.
<i>Convolvulus simulans</i>	small-flowered morning-glory	None/None/4.2	Chaparral (openings), Coastal scrub, Valley and foothill grassland; clay, serpentinite seeps/annual herb/Mar–July/98–2,425	Not expected to occur. Although there is a grassland onsite, it is highly disturbed and dominated by non-native vegetation.

APPENDIX B-3

SPECIAL-STATUS PLANT SPECIES POTENTIAL TO OCCUR WITHIN THE STUDY AREA

Scientific Name	Common Name	Status <sup>1</sup> (Federal/State/CRPR/)	Primary Habitat Associations/ Life Form/ Blooming Period/ Elevation Range (feet)	Potential to Occur
<i>Deinandra paniculata</i>	paniculate tarplant	None/None/4.2	Coastal scrub, Valley and foothill grassland, Vernal pools; usually vernal mesic, sometimes sandy/annual herb/(Mar)Apr–Nov(Dec)/82–3,080	Not expected to occur. Although there is a grassland onsite, it is highly disturbed and dominated by non-native vegetation.
<i>Diplacus johnstonii</i>	Johnston's monkeyflower	None/None/4.3	Lower montane coniferous forest (scree, disturbed areas, rocky or gravelly, roadside)/annual herb/(Apr)May–Aug/3,195–9,580	Not expected to occur. The site is outside of the species' known elevation range and there is no suitable vegetation present.
<i>Dodecahema leptoceras</i>	slender-horned spineflower	FE/SE/1B.1	Chaparral, Cismontane woodland, Coastal scrub (alluvial fan); sandy/annual herb/Apr–June/656–2,490	Not expected to occur. No suitable habitat is present for this species to occur.
<i>Dudleya densiflora</i>	San Gabriel Mountains dudleya	None/None/1B.1	Chaparral, Cismontane woodland, Coastal scrub, Lower montane coniferous forest, Riparian woodland; granitic, cliffs and canyon walls/perennial herb/Mar–June/801–2,000	Not expected to occur. No suitable habitat is present for this species to occur.

APPENDIX B-3

SPECIAL-STATUS PLANT SPECIES POTENTIAL TO OCCUR WITHIN THE STUDY AREA

Scientific Name	Common Name	Status <sup>1</sup> (Federal/State/CRPR/)	Primary Habitat Associations/ Life Form/ Blooming Period/ Elevation Range (feet)	Potential to Occur
<i>Dudleya multicaulis</i>	many-stemmed dudleya	None/None/1B.2	Chaparral, Coastal scrub, Valley and foothill grassland; often clay/perennial herb/Apr-July/49-2,590	Not expected to occur. Although there is a grassland onsite, it is highly disturbed and dominated by non-native vegetation.
<i>Eriastrum densifolium</i> ssp. <i>sanctorum</i>	Santa Ana River woollystar	FE/SE/1B.1	Chaparral, Coastal scrub (alluvial fan); sandy or gravelly/perennial herb/Apr-Sep/299-2,000	Not expected to occur. No suitable habitat is present for this species to occur.
<i>Eriogonum microthecum</i> var. <i>alpinum</i>	alpine slender buckwheat	None/None/4.3	Alpine dwarf scrub, Great Basin scrub; sometimes rocky or gravelly/perennial herb/July, Sep/8,200-10,825	Not expected to occur. The site is outside of the species' known elevation range and there is no suitable vegetation present.
<i>Eriogonum microthecum</i> var. <i>johnstonii</i>	Johnston's buckwheat	None/None/1B.3	Subalpine coniferous forest, Upper montane coniferous forest; rocky/perennial deciduous shrub/July-Sep/6,000-9,595	Not expected to occur. The site is outside of the species' known elevation range and there is no suitable vegetation present.
<i>Eriogonum umbellatum</i> var. <i>minus</i>	alpine sulfur-flowered buckwheat	None/None/4.3	Subalpine coniferous forest, Upper montane coniferous forest; gravelly/perennial herb/June-Sep/5,905-10,065	Not expected to occur. The site is outside of the species' known elevation range and there is no suitable vegetation present.

APPENDIX B-3

SPECIAL-STATUS PLANT SPECIES POTENTIAL TO OCCUR WITHIN THE STUDY AREA

Scientific Name	Common Name	Status <sup>1</sup> (Federal/State/CRPR/)	Primary Habitat Associations/ Life Form/ Blooming Period/ Elevation Range (feet)	Potential to Occur
<i>Eriophyllum lanatum</i> var. <i>obovatum</i>	southern Sierra woolly sunflower	None/None/4.3	Lower montane coniferous forest, Upper montane coniferous forest; sandy loam/perennial herb/June–July/3,650–8,200	Not expected to occur. The site is outside of the species' known elevation range and there is no suitable vegetation present.
<i>Fimbristylis thermalis</i>	hot springs fimbristylis	None/None/2B.2	Meadows and seeps (alkaline, near hot springs)/perennial rhizomatous herb/July–Sep/361–4,395	Not expected to occur. No suitable habitat is present for this species to occur.
<i>Fritillaria pinetorum</i>	pine fritillary	None/None/4.3	Chaparral, Lower montane coniferous forest, Pinyon and juniper woodland, Subalpine coniferous forest, Upper montane coniferous forest; granitic or metamorphic/perennial bulbiferous herb/May–July(Sep)/5,690–10,825	Not expected to occur. The site is outside of the species' known elevation range and there is no suitable vegetation present.
<i>Galium angustifolium</i> ssp. <i>gabrielense</i>	San Antonio Canyon bedstraw	None/None/4.3	Chaparral, Lower montane coniferous forest; granitic, sandy or rocky/perennial herb/Apr–Aug/3,935–8,690	Not expected to occur. The site is outside of the species' known elevation range and there is no suitable vegetation present.



APPENDIX B-3

SPECIAL-STATUS PLANT SPECIES POTENTIAL TO OCCUR WITHIN THE STUDY AREA

Scientific Name	Common Name	Status <sup>1</sup> (Federal/State/CRPR/)	Primary Habitat Associations/ Life Form/ Blooming Period/ Elevation Range (feet)	Potential to Occur
<i>Galium jepsonii</i>	Jepson's bedstraw	None/None/4.3	Lower montane coniferous forest, Upper montane coniferous forest; granitic, rocky or gravelly/perennial rhizomatous herb/July-Aug/5,050-8,200	Not expected to occur. The site is outside of the species' known elevation range and there is no suitable vegetation present.
<i>Galium johnstonii</i>	Johnston's bedstraw	None/None/4.3	Chaparral, Lower montane coniferous forest, Pinyon and juniper woodland, Riparian woodland/perennial herb/June-July/4,000-7,545	Not expected to occur. The site is outside of the species' known elevation range and there is no suitable vegetation present.
<i>Heuchera caespitosa</i>	urn-flowered alumroot	None/None/4.3	Cismontane woodland, Lower montane coniferous forest, Riparian forest (montane), Upper montane coniferous forest; rocky/perennial rhizomatous herb/May-Aug/3,785-8,690	Not expected to occur. The site is outside of the species' known elevation range and there is no suitable vegetation present.
<i>Horkelia cuneata</i> var. <i>puberula</i>	mesa horkelia	None/None/1B.1	Chaparral (maritime), Cismontane woodland, Coastal scrub; sandy or gravelly/perennial herb/Feb-July(Sep)/230-2,655	Not expected to occur. No suitable habitat is present for this species to occur.

APPENDIX B-3

SPECIAL-STATUS PLANT SPECIES POTENTIAL TO OCCUR WITHIN THE STUDY AREA

Scientific Name	Common Name	Status <sup>1</sup> (Federal/State/CRPR/)	Primary Habitat Associations/ Life Form/ Blooming Period/ Elevation Range (feet)	Potential to Occur
<i>Imperata brevifolia</i>	California satintail	None/None/2B.1	Chaparral, Coastal scrub, Mojavean desert scrub, Meadows and seeps (often alkali), Riparian scrub; mesic/perennial rhizomatous herb/Sep-May/0-3,985	Not expected to occur. No suitable habitat is present for this species to occur.
<i>Juglans californica</i>	Southern California black walnut	None/None/4.2	Chaparral, Cismontane woodland, Coastal scrub, Riparian woodland; alluvial/perennial deciduous tree/Mar-Aug/164-2,950	Not expected to occur. No suitable habitat is present for this species to occur.
<i>Juncus acutus ssp. leopoldii</i>	southwestern spiny rush	None/None/4.2	Coastal dunes (mesic), Meadows and seeps (alkaline seeps), Marshes and swamps (coastal salt)/perennial rhizomatous herb/(Mar)May-June/10-2,950	Not expected to occur. No suitable habitat is present for this species to occur.
<i>Juncus duranii</i>	Duran's rush	None/None/4.3	Lower montane coniferous forest, Meadows and seeps, Upper montane coniferous forest; mesic/perennial rhizomatous herb/July-Aug/5,800-9,195	Not expected to occur. The site is outside of the species' known elevation range and there is no suitable vegetation present.

APPENDIX B-3

SPECIAL-STATUS PLANT SPECIES POTENTIAL TO OCCUR WITHIN THE STUDY AREA

Scientific Name	Common Name	Status <sup>1</sup> (Federal/State/CRPR/)	Primary Habitat Associations/ Life Form/ Blooming Period/ Elevation Range (feet)	Potential to Occur
<i>Lathyrus splendens</i>	pride-of-California	None/None/4.3	Chaparral/perennial herb/Mar-June/656-5,000	Not expected to occur. No suitable habitat is present for this species to occur.
<i>Lepechinia fragrans</i>	fragrant pitcher sage	None/None/4.2	Chaparral/perennial shrub/Mar-Oct/66-4,295	Not expected to occur. No suitable habitat is present for this species to occur.
<i>Lepidium virginicum</i> var. <i>robinsonii</i>	Robinson's pepper-grass	None/None/4.3	Chaparral, Coastal scrub/annual herb/Jan-July/3-2,900	Not expected to occur. No suitable habitat is present for this species to occur.
<i>Lilium humboldtii</i> ssp. <i>ocellatum</i>	ocellated Humboldt lily	None/None/4.2	Chaparral, Cismontane woodland, Coastal scrub, Lower montane coniferous forest, Riparian woodland; openings/perennial bulbiferous herb/Mar-July(Aug)/98-5,905	Not expected to occur. No suitable habitat is present for this species to occur.
<i>Lilium parryi</i>	lemon lily	None/None/1B.2	Lower montane coniferous forest, Meadows and seeps, Riparian forest, Upper montane coniferous forest; mesic/perennial bulbiferous herb/July-Aug/4,000-9,005	Not expected to occur. The site is outside of the species' known elevation range and there is no suitable vegetation present.

APPENDIX B-3

SPECIAL-STATUS PLANT SPECIES POTENTIAL TO OCCUR WITHIN THE STUDY AREA

Scientific Name	Common Name	Status <sup>1</sup> (Federal/State/CRPR/)	Primary Habitat Associations/ Life Form/ Blooming Period/ Elevation Range (feet)	Potential to Occur
<i>Linanthus concinnus</i>	San Gabriel linanthus	None/None/1B.2	Chaparral, Lower montane coniferous forest, Upper montane coniferous forest; rocky, openings/annual herb/Apr-July/4,985-9,185	Not expected to occur. The site is outside of the species' known elevation range and there is no suitable vegetation present.
<i>Microseris douglasii</i> ssp. <i>platycarpa</i>	small-flowered microseris	None/None/4.2	Cismontane woodland, Coastal scrub, Valley and foothill grassland, Vernal pools; clay/annual herb/Mar-May/49-3,510	Not expected to occur. Although there is a grassland onsite, it is highly disturbed and dominated by non-native vegetation.
<i>Monardella australis</i> ssp. <i>jokerstii</i>	Jokerst's monardella	None/None/1B.1	Chaparral, Lower montane coniferous forest; Steep scree or talus slopes between breccia, secondary alluvial benches along drainages and washes./perennial rhizomatous herb/July-Sep/4,425-5,740	Not expected to occur. The site is outside of the species' known elevation range and there is no suitable vegetation present.

APPENDIX B-3

SPECIAL-STATUS PLANT SPECIES POTENTIAL TO OCCUR WITHIN THE STUDY AREA

Scientific Name	Common Name	Status <sup>1</sup> (Federal/State/CRPR/)	Primary Habitat Associations/ Life Form/ Blooming Period/ Elevation Range (feet)	Potential to Occur
<i>Monardella macrantha</i> ssp. <i>hallii</i>	Hall's monardella	None/None/1B.3	Broadleafed upland forest, Chaparral, Cismontane woodland, Lower montane coniferous forest, Valley and foothill grassland/perennial rhizomatous herb/June–Oct/2,395–7,200	Not expected to occur. The site is outside of the species' known elevation range.
<i>Muhlenbergia californica</i>	California muhly	None/None/4.3	Chaparral, Coastal scrub, Lower montane coniferous forest, Meadows and seeps; mesic, seeps and streambanks/perennial rhizomatous herb/June–Sep/328–6,560	Not expected to occur. No suitable habitat is present for this species to occur.
<i>Muhlenbergia utilis</i>	aparejo grass	None/None/2B.2	Meadows and seeps, marshes and swamps, chaparral, coastal scrub, cismontane woodland; sometimes alkaline, sometimes serpentinite/perennial rhizomatous herb/Mar–Oct/82–7,625	Not expected to occur. No suitable habitat is present for this species to occur.

APPENDIX B-3

SPECIAL-STATUS PLANT SPECIES POTENTIAL TO OCCUR WITHIN THE STUDY AREA

Scientific Name	Common Name	Status <sup>1</sup> (Federal/State/CRPR/)	Primary Habitat Associations/ Life Form/ Blooming Period/ Elevation Range (feet)	Potential to Occur
<i>Navarretia prostrata</i>	prostrate vernal pool navarretia	None/None/1B.2	Coastal scrub, Meadows and seeps, Valley and foothill grassland (alkaline), Vernal pools; Mesic/annual herb/Apr-July/10-3,965	Not expected to occur. Although there is a grassland onsite, it is highly disturbed and dominated by non-native vegetation.
<i>Oreonana vestita</i>	woolly mountain-parsley	None/None/1B.3	Lower montane coniferous forest, Subalpine coniferous forest, Upper montane coniferous forest; gravel or talus/perennial herb/Mar-Sep/5,295-11,480	Not expected to occur. The site is outside of the species' known elevation range and there is no suitable vegetation present.
<i>Orobanche valida ssp. valida</i>	Rock Creek broomrape	None/None/1B.2	Chaparral, Pinyon and juniper woodland; granitic/perennial herb (parasitic)/May-Sep/3,375-6,560	Not expected to occur. The site is outside of the species' known elevation range and there is no suitable vegetation present.
<i>Phacelia hubbyi</i>	Hubby's phacelia	None/None/4.2	Chaparral, Coastal scrub, Valley and foothill grassland; gravelly, rocky, talus/annual herb/Apr-July/0-3,280	Not expected to occur. Although there is a grassland onsite, it is highly disturbed and dominated by non-native vegetation.

APPENDIX B-3

SPECIAL-STATUS PLANT SPECIES POTENTIAL TO OCCUR WITHIN THE STUDY AREA

Scientific Name	Common Name	Status <sup>1</sup> (Federal/State/CRPR/)	Primary Habitat Associations/ Life Form/ Blooming Period/ Elevation Range (feet)	Potential to Occur
<i>Phacelia mohavensis</i>	Mojave phacelia	None/None/4.3	Cismontane woodland, Lower montane coniferous forest, Meadows and seeps, Pinyon and juniper woodland; sandy or gravelly/annual herb/Apr–Aug/4,590–8,200	Not expected to occur. The site is outside of the species' known elevation range and there is no suitable vegetation present.
<i>Phacelia stellaris</i>	Brand's star phacelia	None/None/1B.1	Coastal dunes, Coastal scrub/annual herb/Mar–June/3–1,310	Not expected to occur. No suitable habitat is present for this species to occur.
<i>Pseudognaphalium leucocephalum</i>	white rabbit-tobacco	None/None/2B.2	Chaparral, Cismontane woodland, Coastal scrub, Riparian woodland; sandy, gravelly/perennial herb/(July)Aug–Nov(Dec)/0–6,885	Not expected to occur. No suitable habitat is present for this species to occur.
<i>Quercus engelmannii</i>	Engelmann oak	None/None/4.2	Chaparral, Cismontane woodland, Riparian woodland, Valley and foothill grassland/perennial deciduous tree/Mar–June/164–4,265	Not expected to occur. Although there is a grassland onsite, it is highly disturbed and dominated by non-native vegetation.
<i>Romneya coulteri</i>	Coulter's matilija poppy	None/None/4.2	Chaparral, Coastal scrub; Often in burns/perennial rhizomatous herb/Mar–July(Aug)/66–3,935	Not expected to occur. No suitable habitat is present for this species to occur.

APPENDIX B-3

SPECIAL-STATUS PLANT SPECIES POTENTIAL TO OCCUR WITHIN THE STUDY AREA

Scientific Name	Common Name	Status <sup>1</sup> (Federal/State/CRPR/)	Primary Habitat Associations/ Life Form/ Blooming Period/ Elevation Range (feet)	Potential to Occur
<i>Sagittaria sanfordii</i>	Sanford's arrowhead	None/None/1B.2	Marshes and swamps (assorted shallow freshwater)/perennial rhizomatous herb (emergent)/May–Oct(Nov)/0–2,130	Not expected to occur. No suitable habitat is present for this species to occur.
<i>Senecio aphanactis</i>	chaparral ragwort	None/None/2B.2	Chaparral, Cismontane woodland, Coastal scrub; sometimes alkaline/annual herb/Jan–Apr(May)/49–2,620	Not expected to occur. No suitable habitat is present for this species to occur.
<i>Senecio astephanus</i>	San Gabriel ragwort	None/None/4.3	Coastal bluff scrub, Chaparral; rocky slopes/perennial herb/May–July/1,310–4,920	Not expected to occur. The site is outside of the species' known elevation range and there is no suitable vegetation present.
<i>Sidalcea neomexicana</i>	salt spring checkerbloom	None/None/2B.2	Chaparral, Coastal scrub, Lower montane coniferous forest, Mojavean desert scrub, Playas; alkaline, mesic/perennial herb/Mar–June/49–5,015	Not expected to occur. No suitable habitat is present for this species to occur.
<i>Streptanthus bernardinus</i>	Laguna Mountains jewelflower	None/None/4.3	Chaparral, Lower montane coniferous forest/perennial herb/May–Aug/2,195–8,200	Not expected to occur. The site is outside of the species' known elevation range and there is no suitable habitat present.



APPENDIX B-3

SPECIAL-STATUS PLANT SPECIES POTENTIAL TO OCCUR WITHIN THE STUDY AREA

Scientific Name	Common Name	Status <sup>1</sup> (Federal/State/CRPR/)	Primary Habitat Associations/ Life Form/ Blooming Period/ Elevation Range (feet)	Potential to Occur
<i>Symphotrichum defoliatum</i>	San Bernardino aster	None/None/1B.2	Cismontane woodland, Coastal scrub, Lower montane coniferous forest, Meadows and seeps, Marshes and swamps, Valley and foothill grassland (vernally mesic); near ditches, streams, springs/perennial rhizomatous herb/July–Nov(Dec)/7–6,690	Not expected to occur. Although there is a grassland onsite, it is highly disturbed and dominated by non-native vegetation.
<i>Symphotrichum greatae</i>	Greata's aster	None/None/1B.3	Broadleafed upland forest, Chaparral, Cismontane woodland, Lower montane coniferous forest, Riparian woodland; mesic/perennial rhizomatous herb/June–Oct/984–6,590	Not expected to occur. No suitable habitat is present for this species to occur.
<i>Thelypteris puberula</i> var. <i>sonorensis</i>	Sonoran maiden fern	None/None/2B.2	Meadows and seeps (seeps and streams)/perennial rhizomatous herb/Jan–Sep/164–2,000	Not expected to occur. No suitable habitat is present for this species to occur.
<i>Thysanocarpus rigidus</i>	rigid fringe pod	None/None/1B.2	Pinyon and juniper woodland; Dry rocky slopes/annual herb/Feb–May/1,965–7,215	Not expected to occur. The site is outside of the species' known elevation range and there is no suitable vegetation present.

APPENDIX B-3

SPECIAL-STATUS PLANT SPECIES POTENTIAL TO OCCUR WITHIN THE STUDY AREA

Scientific Name	Common Name	Status <sup>1</sup> (Federal/State/CRPR/)	Primary Habitat Associations/ Life Form/ Blooming Period/ Elevation Range (feet)	Potential to Occur
<i>Viola pinetorum</i> <i>ssp. grisea</i>	grey-leaved violet	None/None/1B.2	Meadows and seeps, Subalpine coniferous forest, Upper montane coniferous forest/perennial herb/Apr-July/4,920- 11,150	Not expected to occur. The site is outside of the species' known elevation range and there is no suitable vegetation present.
<i>Yucca brevifolia</i>	western Joshua tree	None/SC/None	Great Basin grassland, Great Basin scrub, Joshua tree woodland, Mojavean desert scrub, Pinyon and juniper woodland, Sonoran desert scrub, Valley and foothill grassland/perennial leaf succulent/Apr- May/1,310-6,560	Not expected to occur. The site is outside of the species' known elevation range.

<sup>1</sup> Status Legend:

FE: Federally listed as endangered

FT: Federally listed as threatened

FC: Federal Candidate for listing

DL: Delisted

CE: State listed as endangered

CT: State listed as threatened

CR: State Rare

CRPR 1A: Plants Presumed Extirpated in California and Either Rare or Extinct Elsewhere

CRPR 1B: Plants Rare, Threatened, or Endangered in California and Elsewhere

CRPR 2A: Plants Presumed Extirpated in California, But More Common Elsewhere

CRPR 2B: Plants Rare, Threatened, or Endangered in California, But More Common Elsewhere

CRPR 3: Plants About Which More Information is Needed - A Review List

CRPR 4: Plants of Limited Distribution - A Watch List

.1 Seriously threatened in California (over 80% of occurrences threatened / high degree and immediacy of threat)

.2 Moderately threatened in California (20-80% occurrences threatened / moderate degree and immediacy of threat)

.3 Not very threatened in California (<20% of occurrences threatened / low degree and immediacy of threat or no current threats known)

## REFERENCES

California Native Plant Society (CNPS). 2021. Inventory of Rare and Endangered Plants (online edition, v8-03 0.39). California Native Plant Society. Sacramento, CA. Accessed on September 2021.

CDFW (California Department of Fish and Wildlife). 2021. California Natural Diversity Database (CNDDDB). RareFind, Version 5.2.14 (commercial subscription). Sacramento, California: CDFW, Biogeographic Branch. Accessed September 2021.  
<http://www.dfg.ca.gov/biogeodata/cnddb/rarefind.asp>.

USFWS (U.S. Fish and Wildlife). 2021. Occurrence Database. GIS Data.

