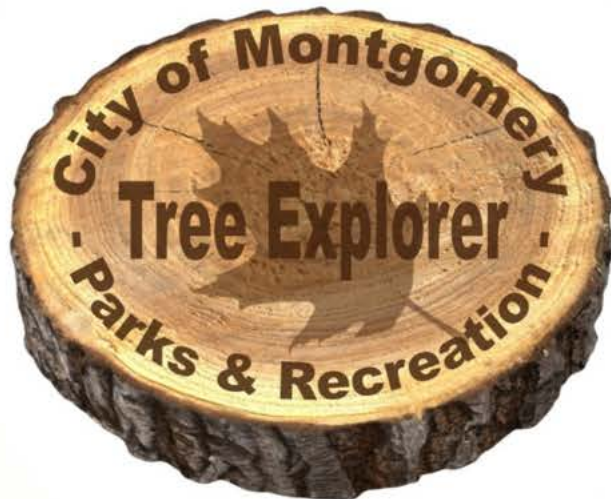


Montgomery Tree Explorer



Ages 2-5

This workbook belongs to:

Welcome Tree Explorers

Dear Parents,

We are pleased to have your family participating in the Montgomery Tree Explorer program. This program was developed by the City of Montgomery Recreation Department and the Montgomery Parks and Recreation Commission to encourage youth to explore Montgomery parks and learn about our various local trees.

The Montgomery Tree Explorer program is designed for all ages. We have two workbooks; one for preschool ages 2-5 and the other workbook for ages 6 and up. Throughout these workbooks you will find a variety of age appropriate activities that will engage your family in learning about various trees within the parks in a fun and active way. This is a great program to enjoy as a family, as younger children may need assistance in completing their activities. To assist in finding the locations of each of our parks we have included a map on the back of the workbook of the city as well as the street location of each park.

We look forward to helping your family become Montgomery Tree Explorers. Please bring your completed workbook to City Hall located at 10101 Montgomery Road. A member of our recreation team will review the workbook and call to inform you when your explorer certificate and patch are ready. Your completed workbook will be returned to you to keep with your certificate and patch. This program will be ongoing, so invite your family, friends and neighbors to become a Montgomery Tree Explorer with you.

City of Montgomery, Parks & Recreation Staff



Montgomery's Arborist

The beauty of Montgomery's streets and parks is due in great part to having a staff arborist. For over 30 years that person has been Terry Willenbrink, Montgomery's arborist.

An arborist is a person who is trained to know all about trees - planting trees, landscaping, designing parks, keeping trees healthy as well as trimming and shaping trees. Few communities of our size are lucky enough to have an arborist.

Because of his work, Montgomery has been awarded Tree City USA status by the National Arbor Day Foundation every year since 1997 for its excellence in urban forestry management.

Terry leads educational walks in Montgomery parks on Arbor Day and during the annual fall tree color changes.

Arborist related questions can be sent to Terry at
twillenbrink@montgomeryohio.org





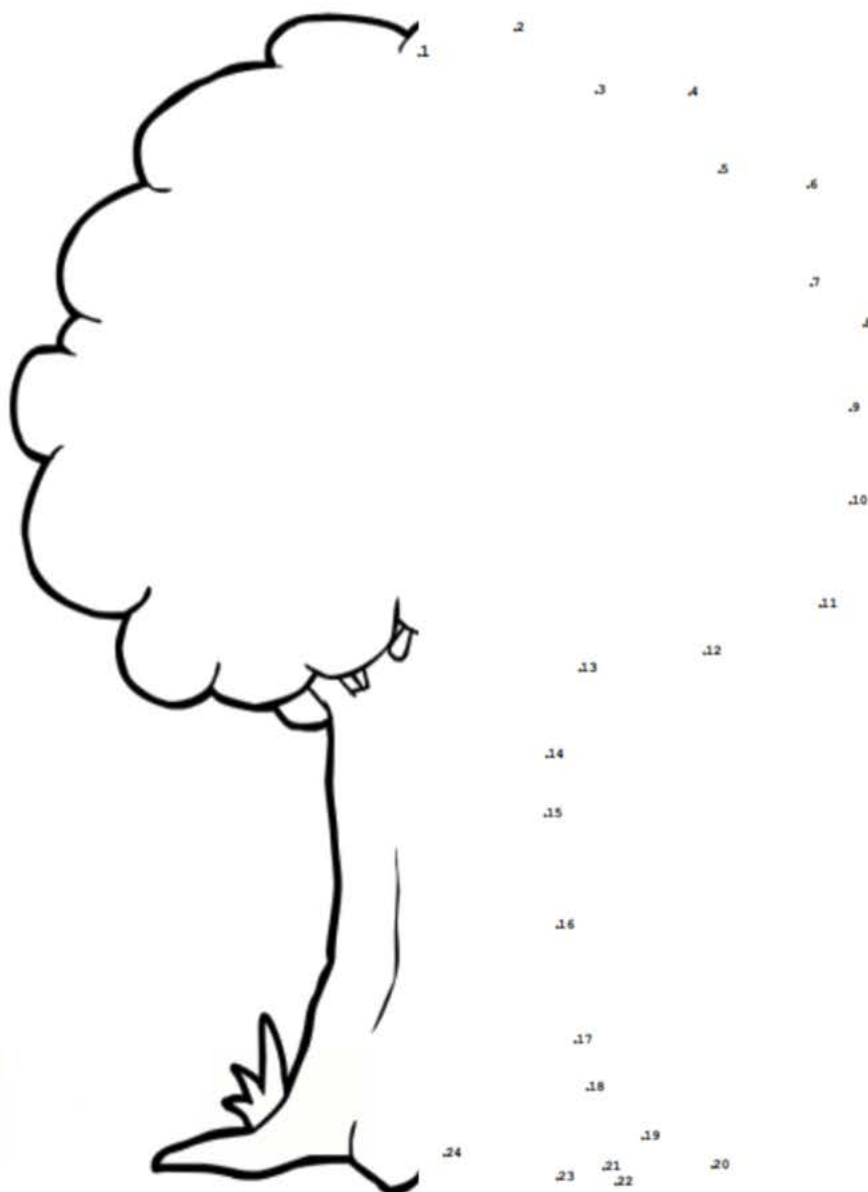
Johnson Nature Preserve

10840 Deerfield Road
7.2 Acres

CONNECT THE DOTS

Connect the dots to complete the image and then color the picture.

The completed image is a



The leaves on a Sassafras tree come in three different shapes on one branch. Can you find one at Johnson Nature Preserve?

JOHNSON NATURE WALK - Complete as a family

The Johnson Nature Walk offers an educational experience highlighting the animals, plants, and history of Johnson Nature Preserve. Walking along the trail, you can read and learn from the signposts throughout the park.

For an audio tour and more detailed information about each topic, scan the QR code here or on the first post for the free JNP mobile app. or enter <http://www.montgomeryohio.org/things-to-do/parks/johnson-nature-preserve/>





Dulle Park

10530 Deerfield Road
15 Acres

Follow the trail and explore the creek and trees around you.
As you explore check off the items you find.

☐ Water



☐ Butterfly



☐ Dirt



☐ Grass



☐ Brown Leaf



☐ Birds



☐ Tree



☐ Birds Nest



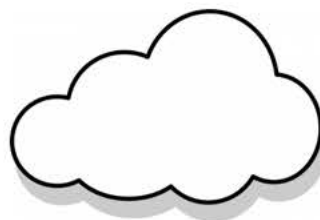
☐ Stick



☐ Green leaf



☐ Clouds



☐ Flag



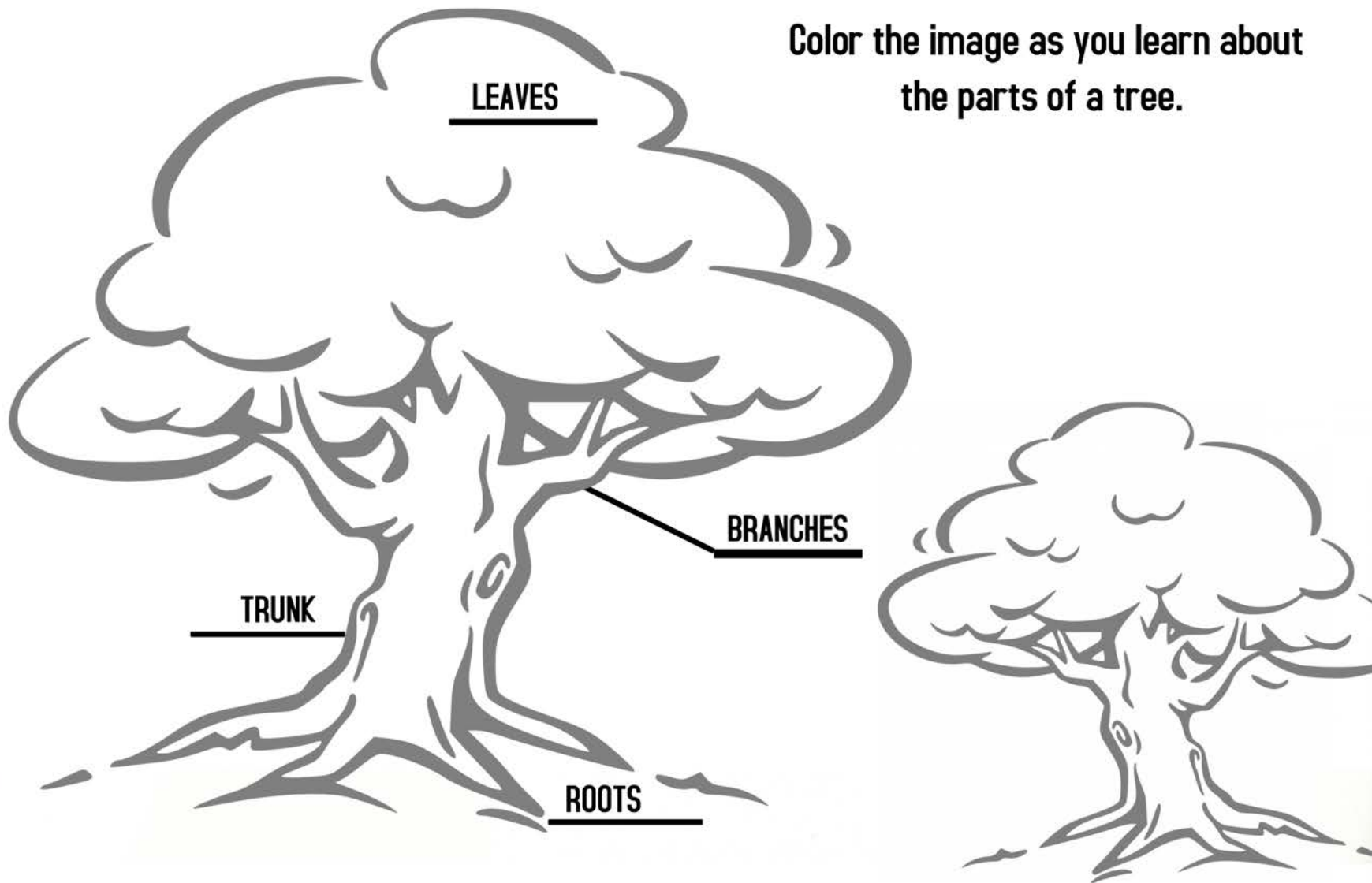


Pioneer Park

10505 Deerfield Road
20 Acres

The trees you see have 4 different parts to them. The leaves, branches, trunk and roots.

Color the image as you learn about
the parts of a tree.



Follow the path throughout the park and show us what you see.
Draw in the space below what you like most about the trees and landscape you explore.



Weller Park

8832 Weller Road

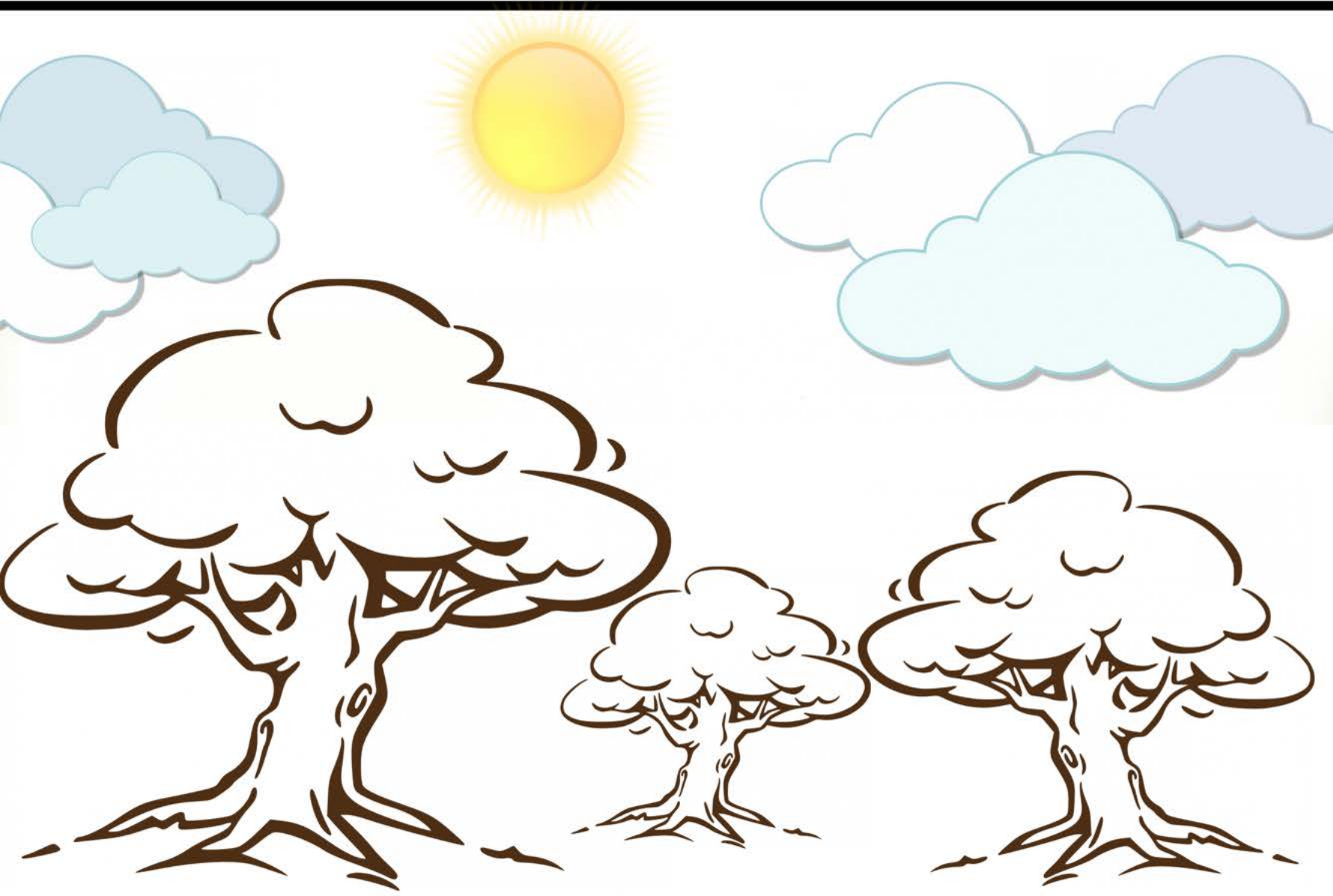
20 Acres

As you visit the playground to laugh and play, look at all the trees you see.

How many trees can you count inside the playground?



Color the image below.





Pfeiffer Park

10391 Montgomery Road

WHITE PINE (*Pinus strobus*)

The Eastern White Pine is easy to find. It has long thin needles in clusters of 5. Branches are spaced about on the trunk with 5-6 branches appearing like spokes on a bicycle wheel.



Can you find pine needles that have fallen to the ground?
Glue the pine needles you gather in the box above.

Pfeiffer Park is known for its bike sculpture. Follow the path through the maze to get to the bike sculpture.



START





Montgomery Park

10101 Montgomery Road
6 Acres

Montgomery Park is filled with a lot of different and beautiful trees. As you explore the trees around you, collect the different types of leaves you find.

In the box below, glue the leaves you found.

How many leaves did you collect? _____

What colors are they? _____



Swaim Park

Corner of Zig Zag and Cooper Roads

13.3 Acres

SWAMP WHITE OAK

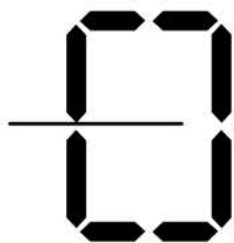


Located in and around the playground at Swaim Park are Swamp White Oak trees. Color the image below, trace the letters, and then practice writing the letters to spell out Oak Tree in the space provided below.



OAK

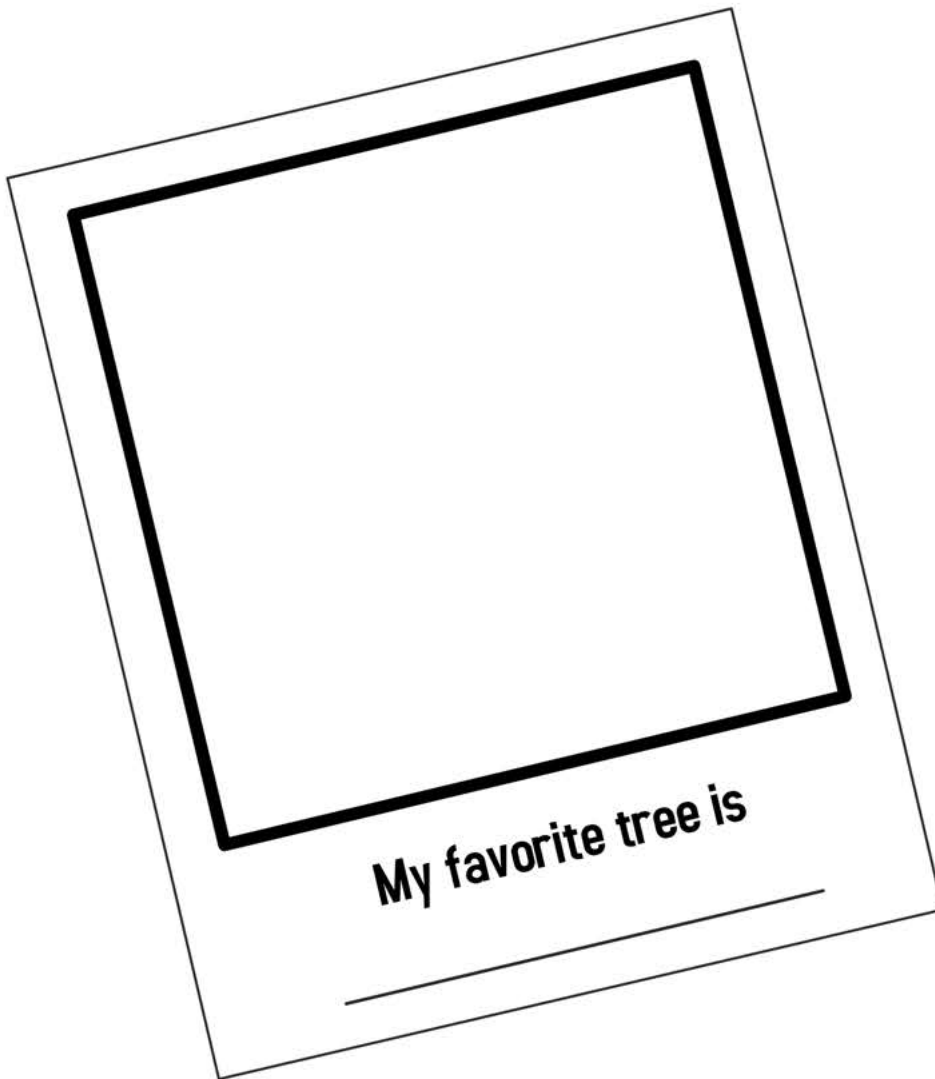
TREE



Leaf Rubbing

As you explore the trees around you, collect different leaves that you find. In the box below, place the leaf behind the paper and rub a crayon over the box to reveal the features of the leaves.

Completion Checklist



Activity Checklist

- Johnson Nature Preserve
 - Dulle Park
 - Pioneer Park
 - Weller Park
 - Pfeiffer Park
 - Montgomery Park
 - Swaim Park
 - Leaf Rubbing
- In the picture box to the left draw picture of your favorite tree.

Child's Name

Child's Age

Phone Number

Email Address

Bring your completed workbook to City Hall. City Hall is located at 10101 Montgomery Road, Montgomery, Ohio 45242. A member of our recreation team will review the workbook and call you when your certificate and badge is ready. Your completed workbook will be given back to you to keep with your certificate and badge.

Recreation Staff Signature

Date

Montgomery Parks Map

