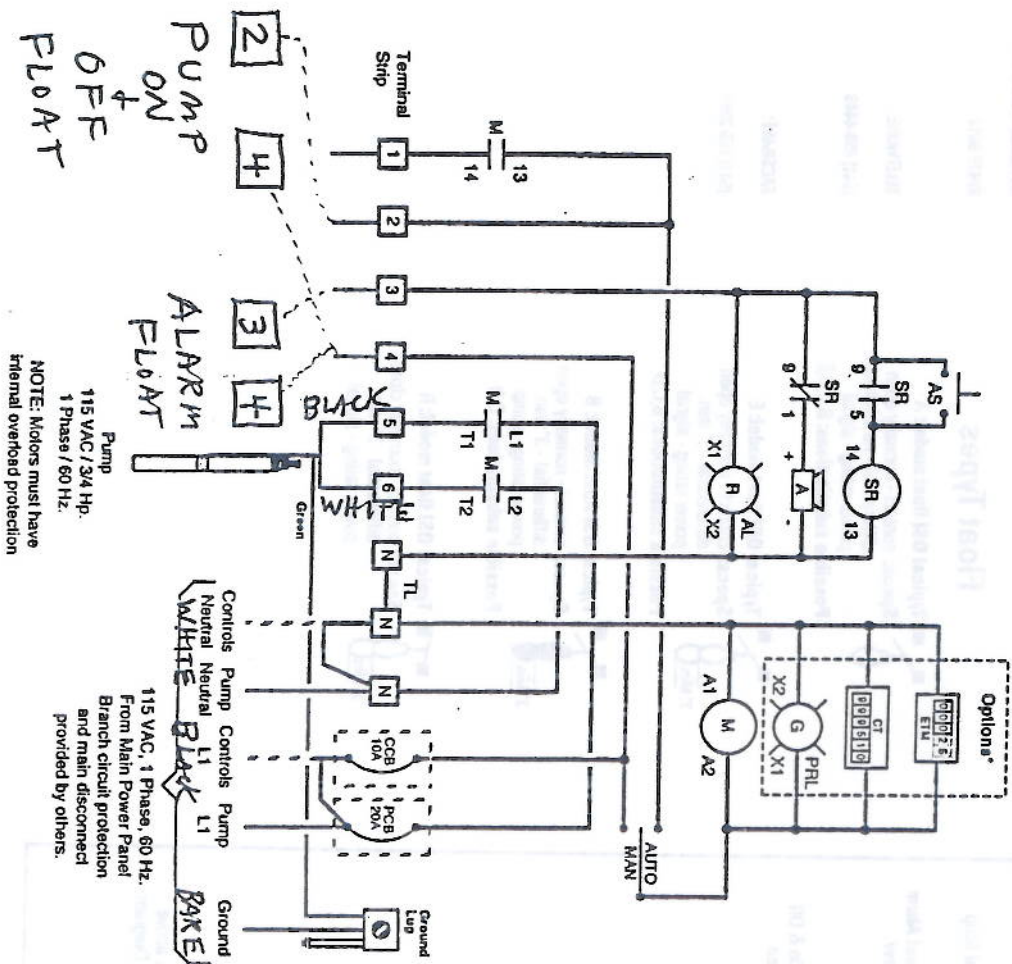


Panel Wiring Diagram Model S1



NOTE: Motors must have
115 VAC / 3/4 Hp.
1 Phase / 60 Hz.
Intrinsic overload protection

NOTE: TIE BLACK FLOAT WIRES
TOGETHER & PLACE UNDER
TERMINAL 4

Simplex Operation

High Level Alarm: This float activates the alarm light and audible alarm when lifted. The audible alarm may be silenced by pressing the illuminated PUSH TO SILENCE button on the front of the control panel. The alarm light will remain on until the float is lowered.

Pump On: This float turns on the pump when lifted. The pump will continue to run until the pump off float is lowered.

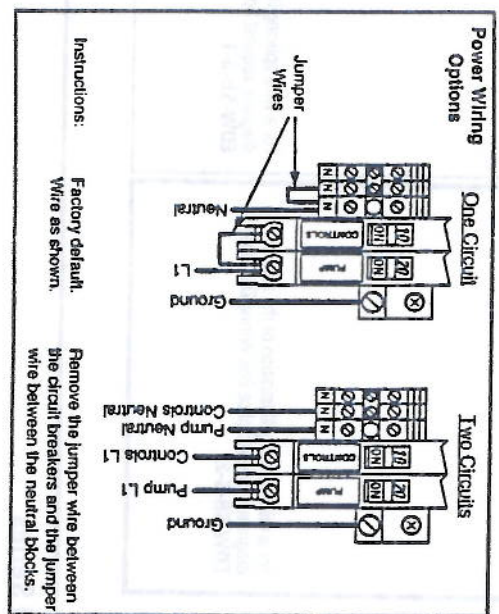
Pump Off: This float shuts off the pump when lowered.

Remote Alarm Connections



Key

- = Factory Wire
 - - - = Field Wire
 - ~ = Alternate Field Wire
 - A = Audio Alarm, 115 VAC
 - AL = Alarm Light
 - AS = Audio Silence Switch
 - CCB = Controls Circuit Breaker
 - M = Motor Contactor
 - PCB = Pump Circuit Breaker
 - SR = Silence Control Relay (1P)
 - TL = Terminal Link
- *Options
 ETM = Elapsed Time Meter
 CT = Cycle Counter
 PRL = Pump Run Light



814 AIRWAY AVENUE
 SHERBORN, OREGON
 503 672 5012
 TEL/FAX: (503) 672 4419
 FACSIMILE: (503) 672 2884