



MUNFORD, TN

Parks and Recreation Master Plan

2021 - 2033



ACKNOWLEDGMENTS

Dwayne Cole, Mayor

Griff Fisher, Parks and Recreation Director

Parks and Recreation Committee Members:

Sue Arthur

Lonnie Glass

Glenn Turner

Jack Bomar

Deborah Reed

Ray Deneka

Prepared By:



ENGINEERS · ARCHITECTS · PLANNERS

TABLE OF CONTENTS

Executive Summary.....5

Background Information

Munford Demographics.....8
Regional Context.....9
Community Comparison.....10
Park Access.....12
Strategic Planning - SWOT Analysis.....14
Community Needs Assessment Survey.....16
Public Input Meetings.....20

Parks and Recreation Community Programming

Munford Parks and Recreation Community Offerings.....26

Parks and Recreation Inventory & Evaluation

Hope Park.....30
Parks and Recreation Community Center.....32
Regions Bank Building (Gym).....34
Senior Center.....36
Poplar Park.....38
Centennial Park.....40
City Park.....42
Valentine Park.....44

Multimodal Connectivity

Sidewalks.....48
Bike Lanes - Future Connectivity.....49

Other Community Recreation Offerings

Munford School System52

Future Park Improvements

Veterans Plaza.....56
Valentine Park Master Plan.....58

Park Improvement Priorities and Phasing

Park Improvements and Timelines.....62
Funding Resources.....63

THIS PAGE LEFT BLANK INTENTIONALLY



Image of Tipton County, TN

Parks and recreation are more important now than ever before. Parks and recreation provide an essential service to community members by giving citizens a destination to exercise, relax, learn, socialize and more.

Given Munford's proximity to the Metro Memphis area, the City should anticipate significant growth over the next 10 years (approximately 8%-10% based on the UT Boyd Center projections). The projected population increase should be planned for as proactively as possible. Ensuring the city has quality amenities will provide Munford the ability to be a central place maker in South Tipton County.

Munford has laid the groundwork for providing close to home amenities for local citizens. The city currently has five parks within town limits.

The parks differ in size and have a variety of scenic interests as well as amenities. All of the parks are close to residential neighborhoods which provides important connectivity and accessibility for all users. Most of the parks have dated amenities and lack ADA accessibility.

With some improvements Munford will be able to continue to provide amenities and programming that make Munford a great place to live, work, and play.

This document will review the City's demographics, strategically analyze the parks strengths, weaknesses, opportunities and threats, and explore the community's desired needs. This document also inventories and assesses the parks' existing amenities and future plans for improvement. A twelve-year implementation schedule will prioritize and phase the necessary work to be completed for the park improvements.



BACKGROUND INFORMATION

- MUNFORD DEMOGRAPHICS
- REGIONAL CONTEXT
- COMMUNITY COMPARISON
- PARK ACCESS
- STRATEGIC PLANNING - SWOT ANALYSIS
- COMMUNITY NEEDS ASSESSMENT SURVEY
- PUBLIC INPUT MEETINGS

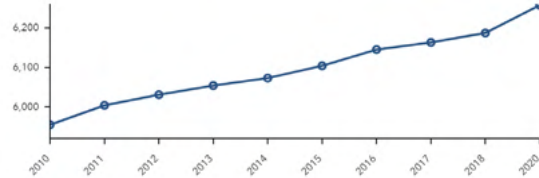
MUNFORD DEMOGRAPHICS

Munford's current and projected demographics will play a large role in determining suitable parks and recreation amenities for the community. In recent years Munford has experienced significant growth due to its proximity to the Memphis metro region. Munford can continue to expect consistent population growth over the next 20 years. The Boyd Center at UT Knoxville predicts that Tipton County's population will increase approximately 8% by 2040. The majority of this growth will occur in the age group of 20 to 64. Ensuring that Munford is providing parks and recreation amenities for this age group will be important.

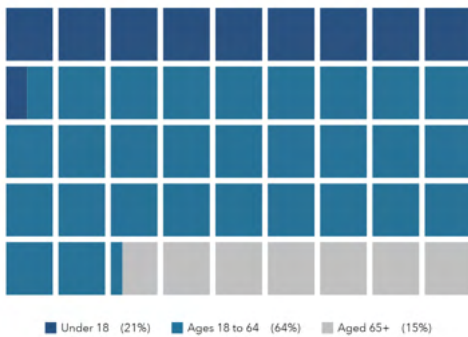
KEY FACTS



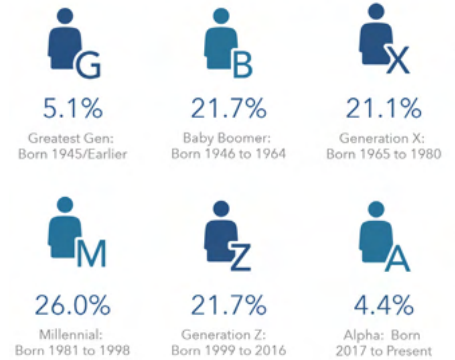
POPULATION TRENDS



POPULATION BY AGE

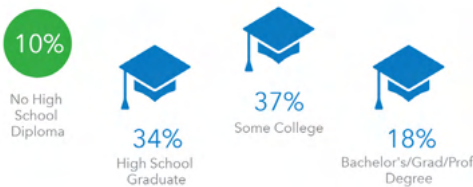


POPULATION BY GENERATION

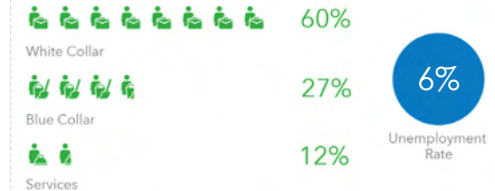


Approximately 34% of Munford's residents have a high school degree compared to the Tennessee's overall rate of 32%. Tennessee's overall percentage of citizens who hold a Bachelor's degree or higher is 28% while Munford is 18%. Median household income for Munford residents is \$75,000 compared to Tennessee's \$53,346.

EDUCATION



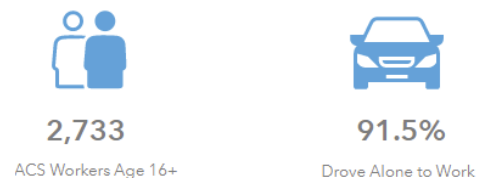
EMPLOYMENT



INCOME



WORKERS



esri THE SCIENCE OF WHAT'S POSSIBLE. This infographic contains data provided by American Community Survey (ACS), Esri, Esri and Bureau of Labor Statistics. The vintage of the data is 2014-2018, 2019, 2024. © 2020 Esri

REGIONAL CONTEXT

Munford is located near the southern border of Tipton County. There are several parks and recreation amenities outside of the city limits available for residents and visitors alike. Tipton County Parks and Recreation amenities include the Lower Hatchie River National Wildlife Refuge, Glenn Springs Lake and several other local parks. Within a short drive, Munford residents can seek out a variety of recreational experiences.



Lower Hatchie River National Wildlife Refuge



Drummonds Park - Level 1 Arboretum



Sugar Creek ATV Park

2020 NRPA Agency Performance Review Key Findings



Agencies that ban the use of tobacco products at parks and facilities

76%

Full-Time Equivalent Employees (FTES) Per 10,000 Residents:

8.1



Operating Expenditures Per Capita:

\$81.19/year



54%

of park and recreation agencies deliver STEM programming to children and young adults

Manages **11.0** miles of walking, hiking, running and biking trails



88%

of park and recreation agencies offer themed special events to the public

Residents Per Park:

2,281



Revenue-to-Operating Expenditures:

25.9%



COMMUNITY COMPARISON

NRPA AGENCY REPORTING

The National Recreation and Park Association (NRPA) is the leading non-profit organization dedicated to the advancement of public parks, recreation and conservation.

Park and recreation agencies are as diverse as the communities that they serve, and what works well for one agency may not be best for another agency. Therefore, benchmark data helps to identify the best practices to optimally serve the community.

NRPA Park Metrics are the most comprehensive source of data standards and insights for park and recreation agencies. Launched in 2009 and previously known as PRORAGIS, the agency performance resource assists park and recreation professionals in the effective management and planning of their operating resources and capital facilities.

The suite of tools allows park and recreation agencies to build customized reports that allow for comparisons with peer agencies. Park and recreation professionals can use this benchmark data to gain more funding support, improve operations, and better serve their communities.

The following parameters were set within NRPA Park Metrics to determine the NRPA Agency Average shown in the table below.

Budget - Up to \$900,000

NRPA Agency Summary Reporting - 2020	Agencies Reported	Median Figure	Munford
Operating expenditures per capita	65	\$49	\$129
Acres of Park per 1,000 residents	52	10.4	23
Number of residents per park	53	2,250	1,222

Outdoor Park & Recreation Facilities By Population - 2020	Agencies Reported	Median Figure	Munford
Residents per Playgrounds	51	3,000	1,222
Residents per Recreation Center	21	11,000	5,927
Residents per Tennis Courts	35	3,250	3,055
Residents per Baseball Field	38	3,423	1,222
Residents per Skate Park	11	9,587	6,109

Comparatively, even with the low numbers reported by other agencies, Munford is averaging the same or better amenity wise with communities of the same size and budget.

PARK ACCESS

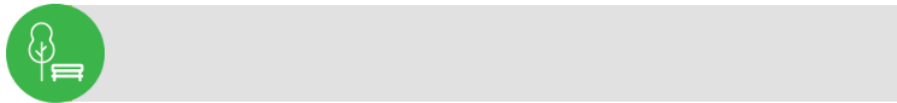
We're working to ensure there's a park within a 10-minute walk of home of every person, in every neighborhood, in every city across America.

Is Munford meeting that goal?

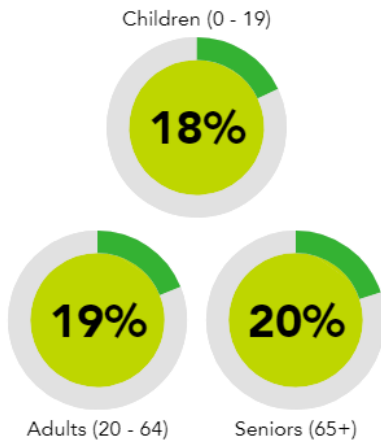
19% of residents live within a 10 minute walk of a park.



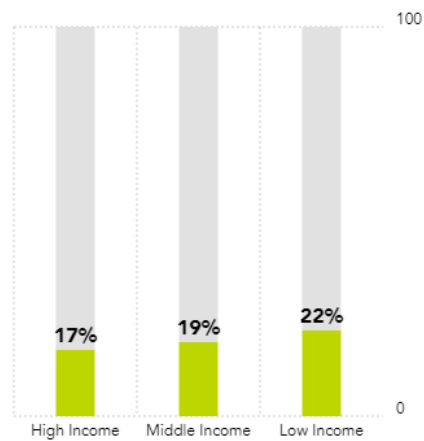
2% of Munford's city land is used for parks and recreation.



PERCENT OF RESIDENTS WITHIN A 10-MINUTE WALK OF A PARK BY AGE



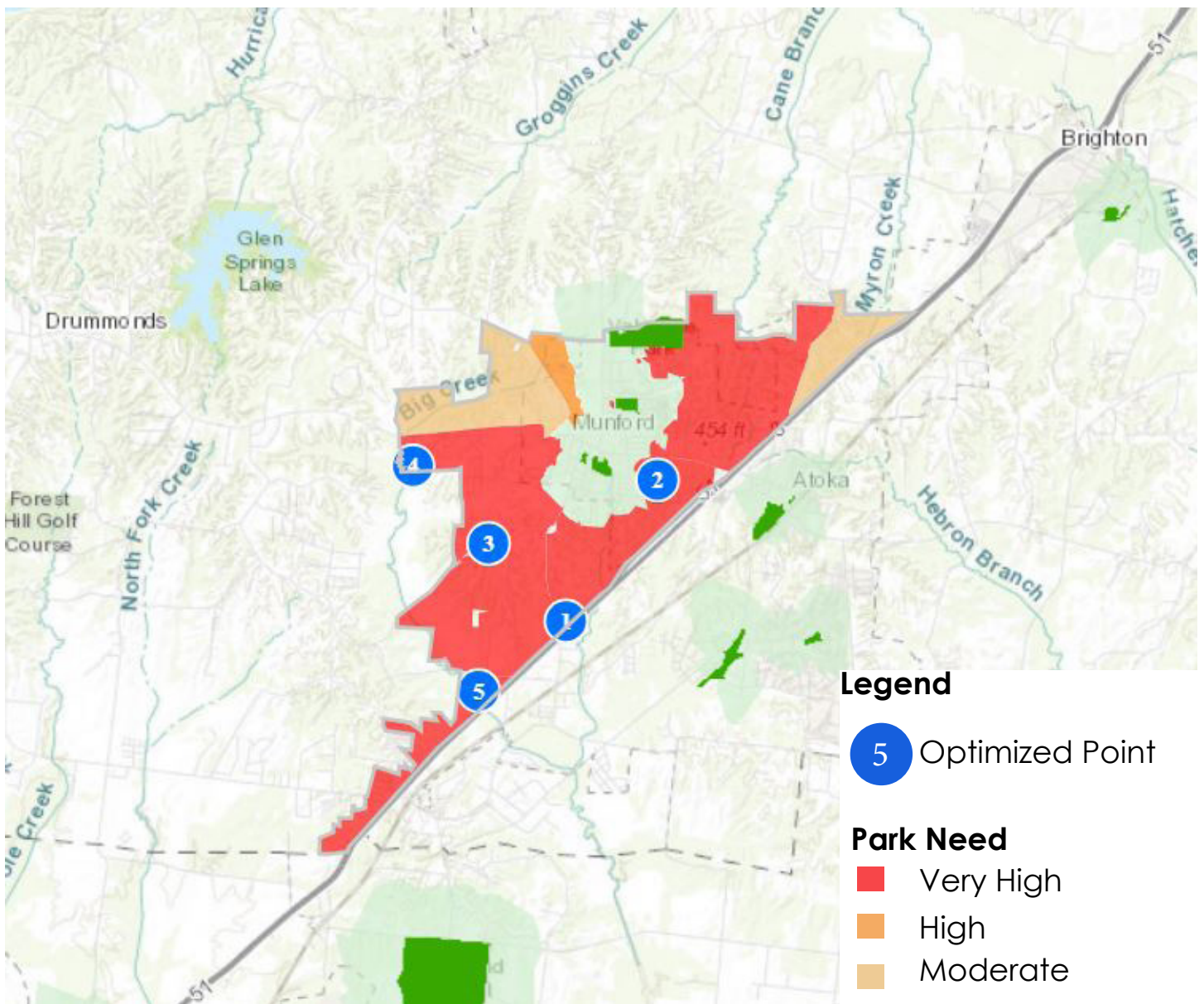
PERCENT OF RESIDENTS WITHIN A 10-MINUTE WALK OF A PARK BY INCOME



PARK ACCESS

Munford offers 5 parks and a community center to local residents. One marker for park access is a 10 minute walk for every citizen in Munford. The map below reflects where the parks are located and their proximity to people within a 10 minute walk. Areas in red show where citizens are not located within a 10 minute walk to a park. The numbered blue circles indicate possible park locations to maximize the number of users within a 10 minute walk. If park additions are considered in the future, this criteria could be taken into consideration.

Note: Hope Park was not located within ParkServe’s mapping system at the time this map was printed. The circle numbered 4 would be in the approximate location of Hope Park.



SWOT ANALYSIS

The City of Munford conducted a virtual strategic planning meeting in the winter of 2021 with their Parks and Recreation Board. A SWOT analysis was conducted and the results are shown below.

S

STRENGTHS

Number of parks in town

Quality Parks and Recreation staff

Parks and Recreation commitment to providing a variety of programs and activities

Parks and Recreation does a good job listening to community requests and comments

One of the best baseball parks in the area

Strong senior citizens' community and programming

SNAG Program (Special Needs Athletic Group)

W

WEAKNESSES

Lack of facility types (i.e. - multi-use building)

Cost to rent gym at local school for sports events

Accessibility / Play Equity / Inclusiveness

Lighting at soccer field

Capacity at existing facilities is maxed out

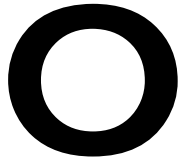
Limited parking

Need more biking and hiking trails

Priorities related to Strengths and Weaknesses

1. Improve existing facilities and start planning for new facilities to help meet capacity.
2. Continue to provide citizens with quality programming and activities.
3. Ensure that Parks and Recreation budget generates adequate revenue to continue to provide services to the community.

Over the next 5 - 10 years, the City of Munford's greatest focus affecting the future of their Parks & Recreation department is funding for amenity improvements, programming and accessibility. Improving and building new facilities to replace aging and capacity loaded facilities will be essential for the success of the department.



OPPORTUNITIES

- Land availability for expansion
- Anticipated increase in population
- Programming
- Awareness of health and sports trends
- Grant funding opportunities
- Pandemic (more people are using parks)



THREATS

- Staff retention
- Competitive city programs
- Funding
- Pandemic (public perception and programming)
- Facility partnerships
- Aging facilities

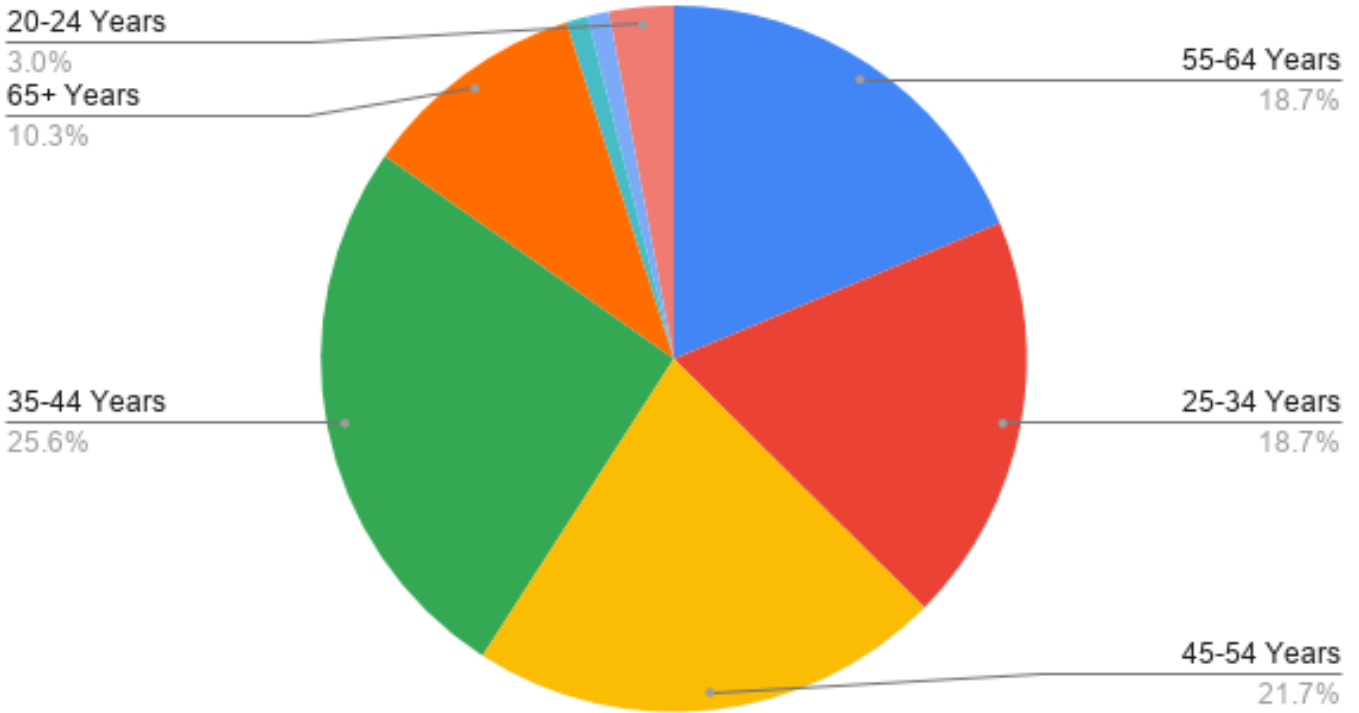
Priorities related to Opportunities and Threats

1. Continue to seek out funding opportunities to improve facilities and amenities.
2. Monitor parks and recreation trends to provide current program and amenity offerings.
3. Continue to educate citizens on benefits of parks and recreation.
4. Ensure quality staff retention.

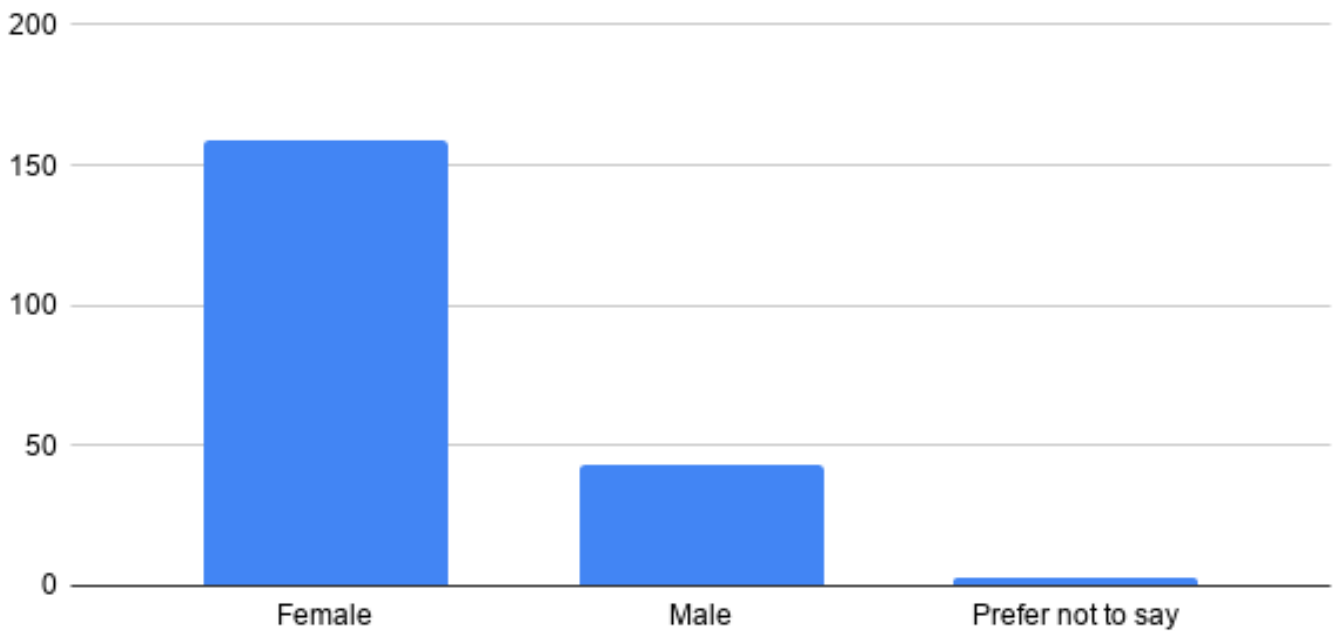
COMMUNITY NEEDS ASSESSMENT SURVEY

Munford conducted an on-line survey via social media to gauge the community’s feelings and views toward parks and recreation. The survey asked respondents about existing parks and recreation facilities and activities. The survey also asked questions in regards to future parks and recreation improvements. In total, 206 responses were received to the survey. Below are the survey results and major findings:

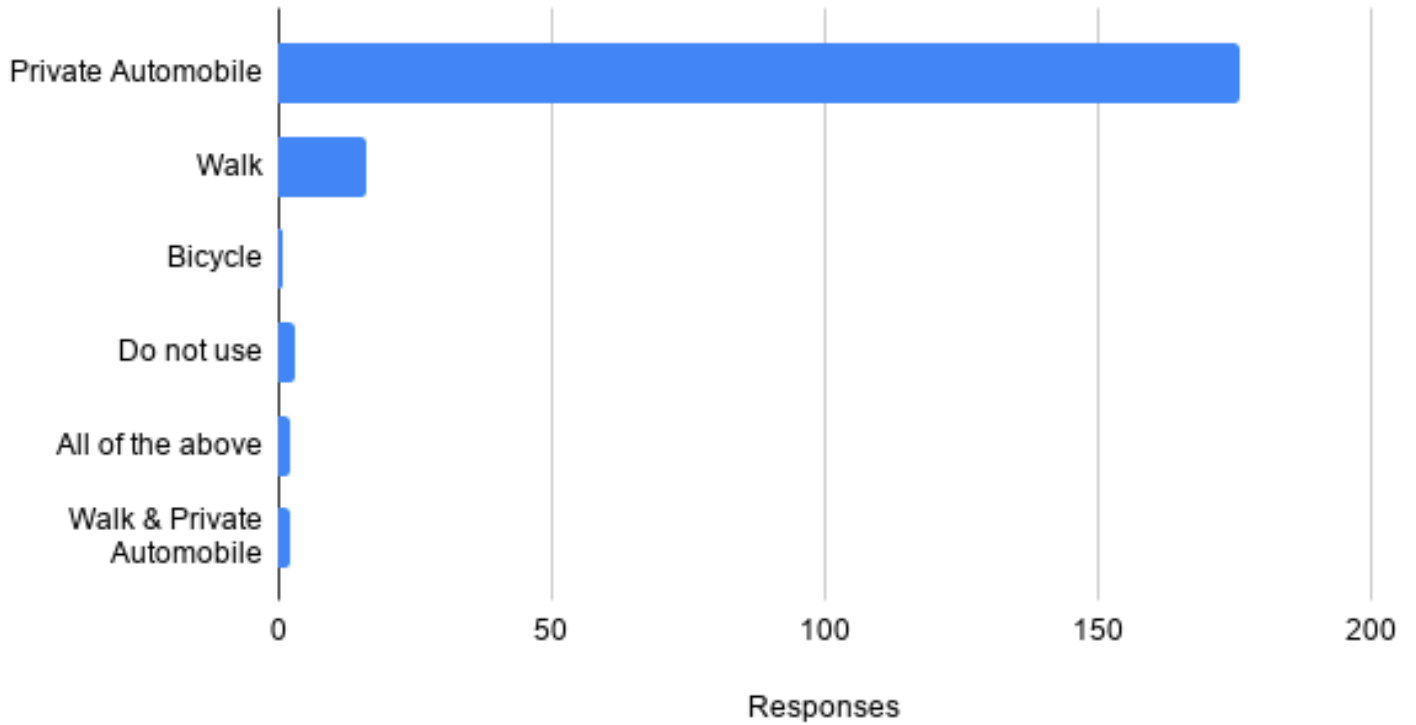
What is your age?



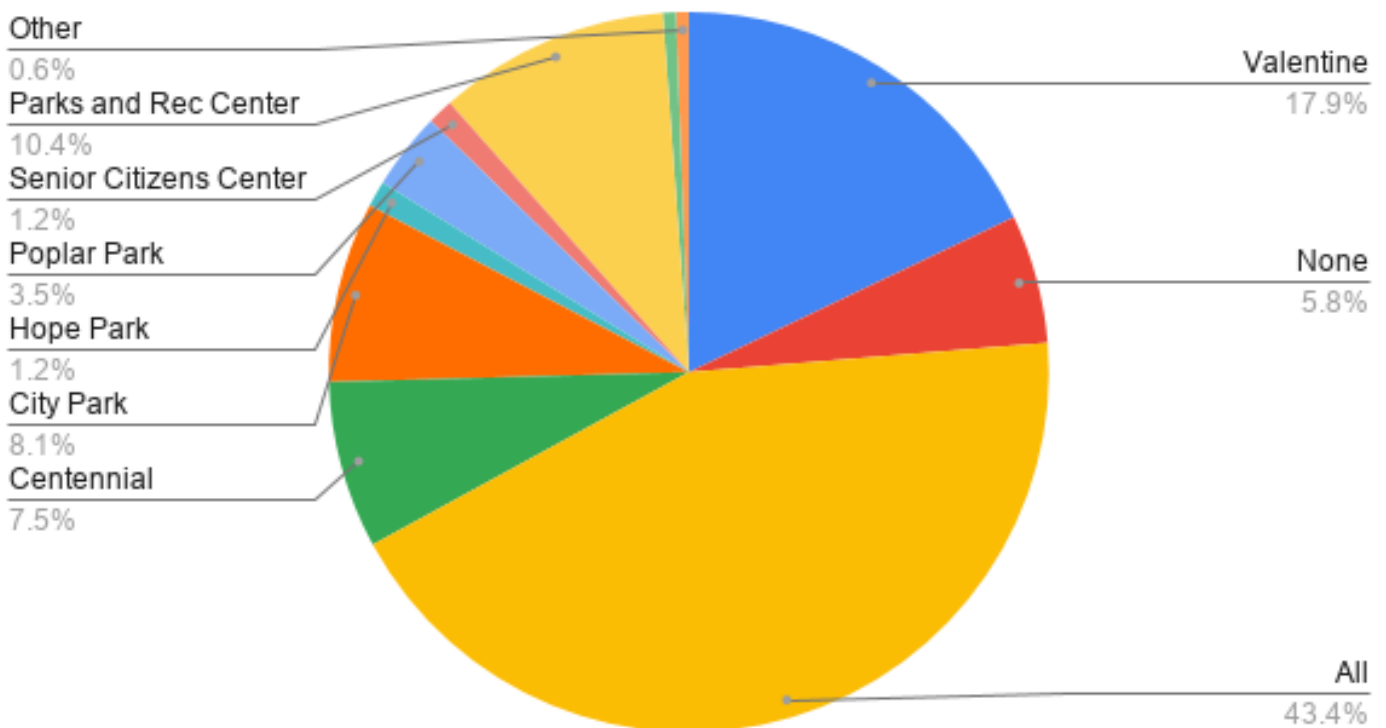
What is your gender?



How do you get to existing parks or facilities?

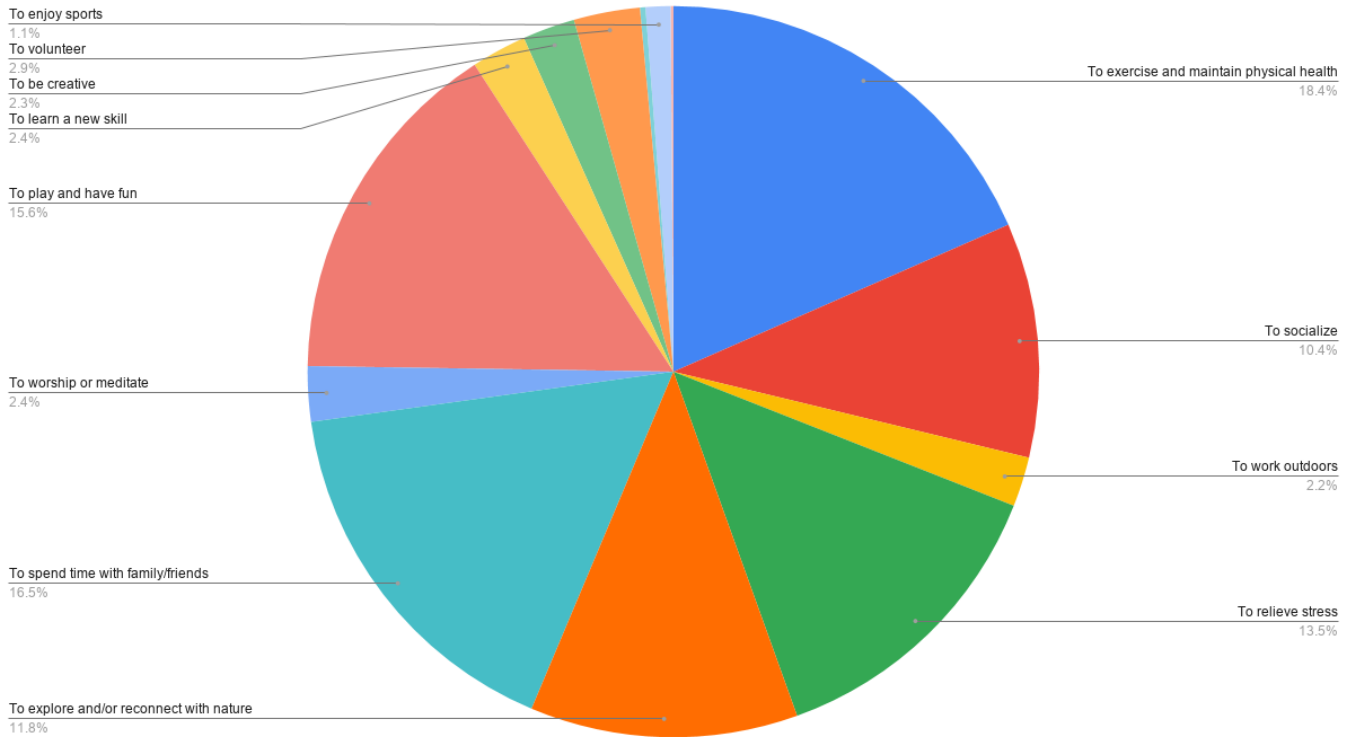


Which parks do you visit?

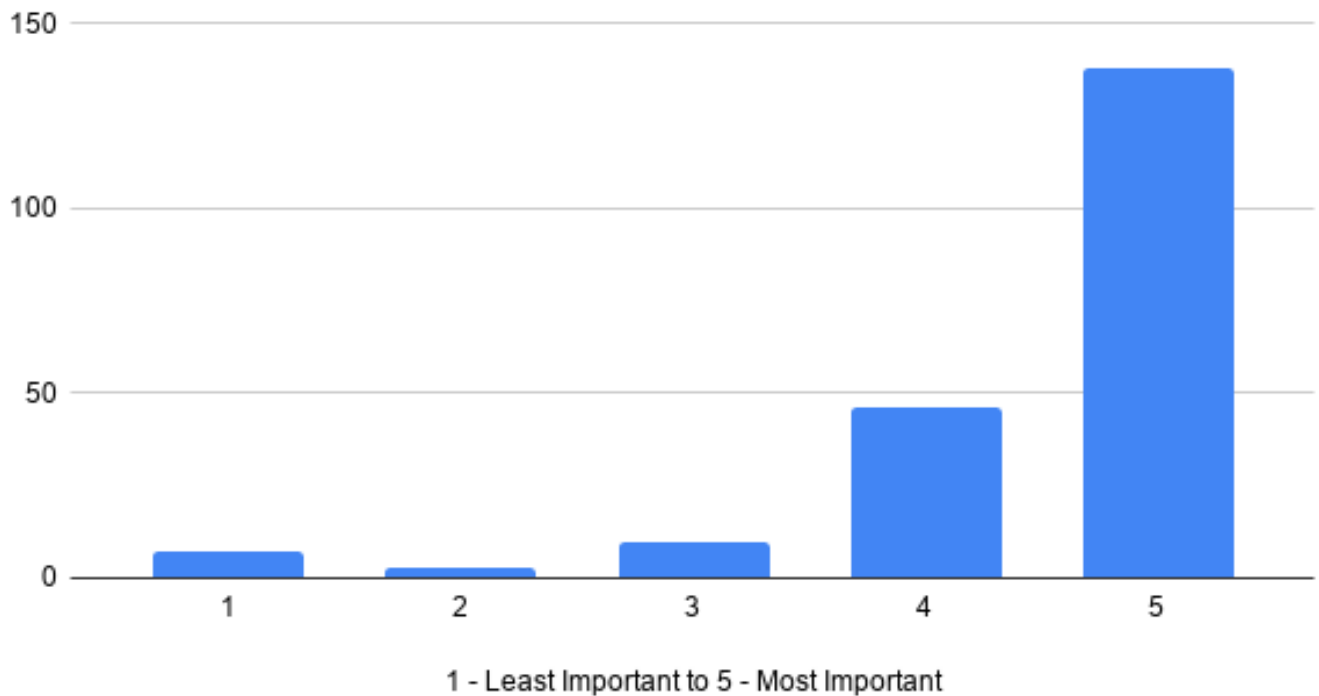


COMMUNITY NEEDS ASSESSMENT SURVEY

What are all the reasons you use local parks for?



How important are Parks and Recreation to your quality of life?



COMMUNITY NEEDS ASSESSMENT SURVEY

Some of the general feedback received when asked, “What do you like or dislike about Munford’s existing parks and recreation facilities?” are listed below:

“Some are kept up better than others. (City always looks great, Poplar is run down looking)”

“We typically use the parks to walk, and each park has different paths/walkways which makes it nice to mix it up. The only issue is sometimes at Valentine Park people are traveling too fast when walking.”

“The dog park needs more park benches for owners to sit during their pets playtime. Somehow add to the parking at centennial baseball park.”

“I’m happy to have a walking path so close and convenient”

“They are old and need updating. Add parking to Valentine Park. Add lights to Valentine Park for multiple uses. Cleaner bathrooms for all the parks. An indoor gym would be nice to be able to play MPR sports indoors and not be dependent on the school gyms.”

“Playground equipment is outdated”

“Wish we had our own basketball gym where we didn’t have to depend on the surrounding schools and their schedules for usage.”

Responses below for “What activities would you like to see updated/added to the park system?”:

“City recreation center that offered racket ball and fitness center”

“An amphitheater for outdoor music festivities”

“More shade and benches”

“Restrooms”

“More walking trails”

“Community pool or splash pad”

“Updated playgrounds”

“Shaded playground areas, special needs playground equipment, restroom access, dedicated bike paths”

“Basketball courts”

PUBLIC INPUT MEETINGS

In a continuation of the input from the general public, pop-up input sessions were held at several sports practices (baseball and soccer) and at a runner's club weekly meetup. Large size maps were printed for participants to make notes of their recommended improvements.



A2H ENGINEERS ARCHITECTS PLANNERS

MUNFORD ROCKS!! *Rain for Cerritos*

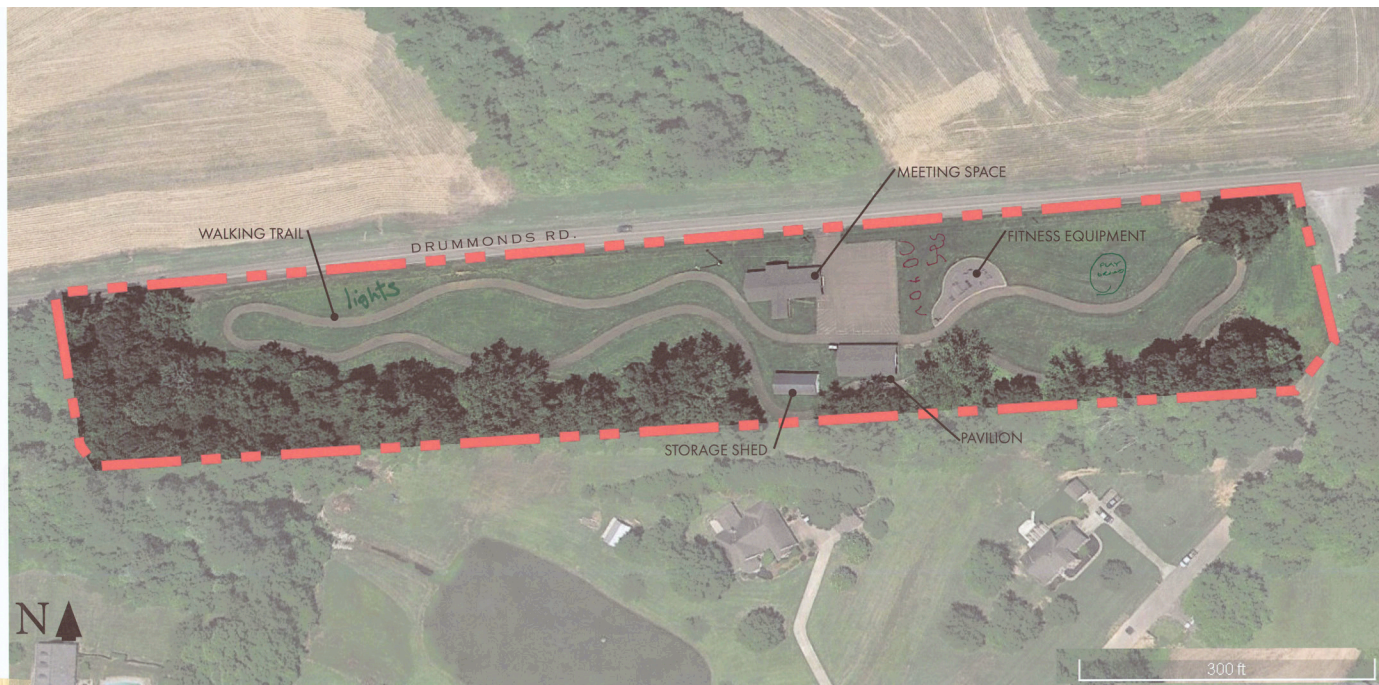
CITY PARK / REC CENTER / SENIOR CENTER
MUNFORD, TN - PARKS AND REC MASTER PLAN
 MARCH 2021



A2H ENGINEERS ARCHITECTS PLANNERS

use tarps *Field Drainage* *Turf Fields* *Dirt Fill* *More Parkways!!* *Shuttle Dirt* *Ball Fields* *Orange* *bike trails* *bike train* *Parking* *use tarps* *field drainage?* *little hikes day care*

CENTENNIAL PARK
MUNFORD, TN - PARKS AND REC MASTER PLAN
 MARCH 2021



A2H

ENGINEERS ARCHITECTS PLANNERS

Splash Pad x2

HOPE PARK
MUNFORD, TN - PARKS AND REC MASTER PLAN
MARCH 2021



A2H

ENGINEERS ARCHITECTS PLANNERS

WATER SLIDE!

*another vent./exit
- Upgrade
waterslide*

*- More Events
Such as Rock the
Block*

POPLAR PARK
MUNFORD, TN - PARKS AND REC MASTER PLAN
MARCH 2021



Some of the suggestions for each park are summarized below.

City Park: playground upgrades

Centennial Park: batting cages, trail repairs, additional window at concessions, playground upgrades, additional ball fields, field drainage improvements

Hope Park: playground, splash pad, lighting for trail and amenities

Poplar Park: additional vehicular circulation (2nd access), more park events, water play, tennis court improvements (repave court and replace lights), lighting for trail and amenities

Valentine Park: paved parking area at soccer fields, restroom near soccer fields, walking / hiking / biking trails, playground upgrades, indoor recreation center facility, restrooms near easternmost playground

In order to make sure everyone who was interested had an opportunity to express their views on the city of Munford's parks and recreation, a virtual meeting was held in April 2021. The meeting date was published in the local paper, on the city's web page, and on social media channels. The meeting discussed the town's existing parks, their strengths and weaknesses, the survey results, as well as plans for improvements going forward. No additional comments from participants were given.

Public Input Meeting: April 6, 2021



6:00 pm

Share

Add to calendar

Agenda

Contact Information

NOTICE OF PUBLIC MEETING

The City of Munford, Tennessee, Equal Opportunity, Affirmative Action Employers, and planning consultant, A@H, Inc. are pleased to announce the date and time of a Parks and Recreation Master Plan community input meeting.

The public is encouraged to participate in this exciting and important planning project. The input received from the community will support the preparation of a Parks and Recreation Master Plan that will guide the revitalization and enhancement of the public park system amenities and recreation opportunities for many years to come.

The community input meeting will be hosted virtually and anyone with an interest is invited to attend.

When: Tuesday, April 6, 2021 from 6:00 pm to 7:00 pm

Please join my meeting from your computer, tablet, or smartphone.

<https://www.gotomeet.me/A2HMeetings/munford>

You can also dial in using your phone.

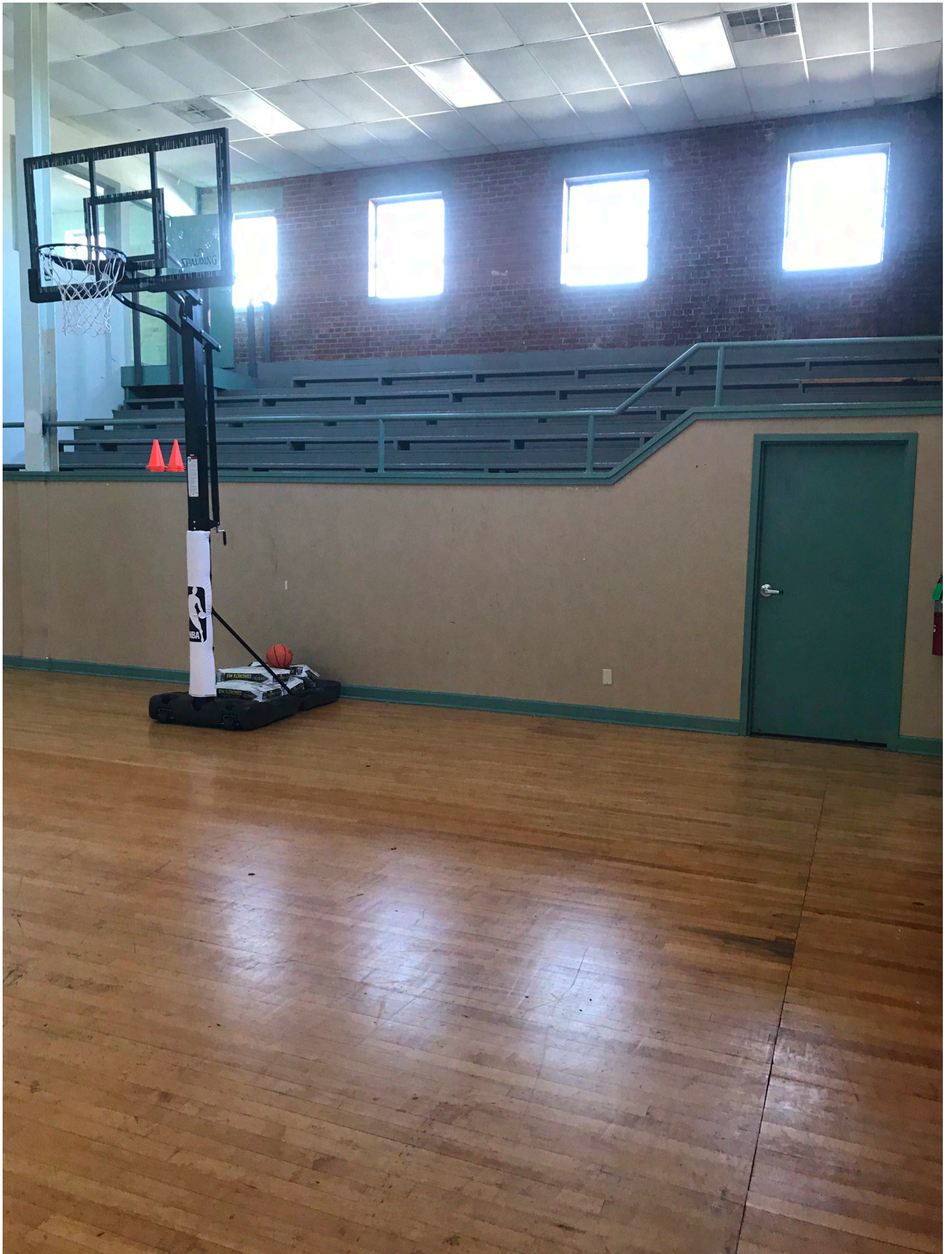
United States: +1 (312) 757-3121

Access Code: 532-292-981

Persons with a disability, who require aids or services to participate at the meeting, may contact Sherry Yelvington at the following email or phone number no less than ten (10) days prior to the date of the meeting.

Email: syelvington@munford.com

Phone: (901) 837-0171



PARKS AND RECREATION COMMUNITY PROGRAMMING

- MUNFORD PARKS AND RECREATION OFFERINGS

MUNFORD PARKS AND RECREATION OFFERINGS

The City of Munford offers a variety of programming and activities for citizens of all ages. Below is a list of the departments programming offerings and activities.

Sports Programs

- Baseball
- Basketball
- Soccer
- Flag football

Senior Center

- Game days
- Meal days
- Rental reservation space
- Meal deliveries
- Driving classes

Summer Camps

- YMCA partnership - after school / summer
- Cake decorating camp
- Slime camp

Parades

- Celebrate Munford
- Celebrate Christmas

5K races (1 per quarter)

Outdoor Movies

Skating Rink

Corn Hole League

Pickleball League

Cheer leading Camp

Zumba Classes

Line Dancing

SRVS - Partnership for activities for people with disabilities

SNAG - Special Needs Athletic Program

Hunter Education

Health Screening (partnership through Lifeline)

Flu Shots

MUNFORD PARKS AND RECREATION OFFERINGS





PARKS AND RECREATION INVENTORY & EVALUATION

- HOPE PARK
- PARKS AND RECREATION COMMUNITY CENTER
- REGIONS BANK BUILDING (GYM)
- SENIOR CENTER
- POPLAR PARK
- CENTENNIAL PARK
- CITY PARK
- VALENTINE PARK

HOPE PARK

Location:

1425 Drummonds Rd.

Park Type:

Community

Size:

6.5 Acres

Amenities:

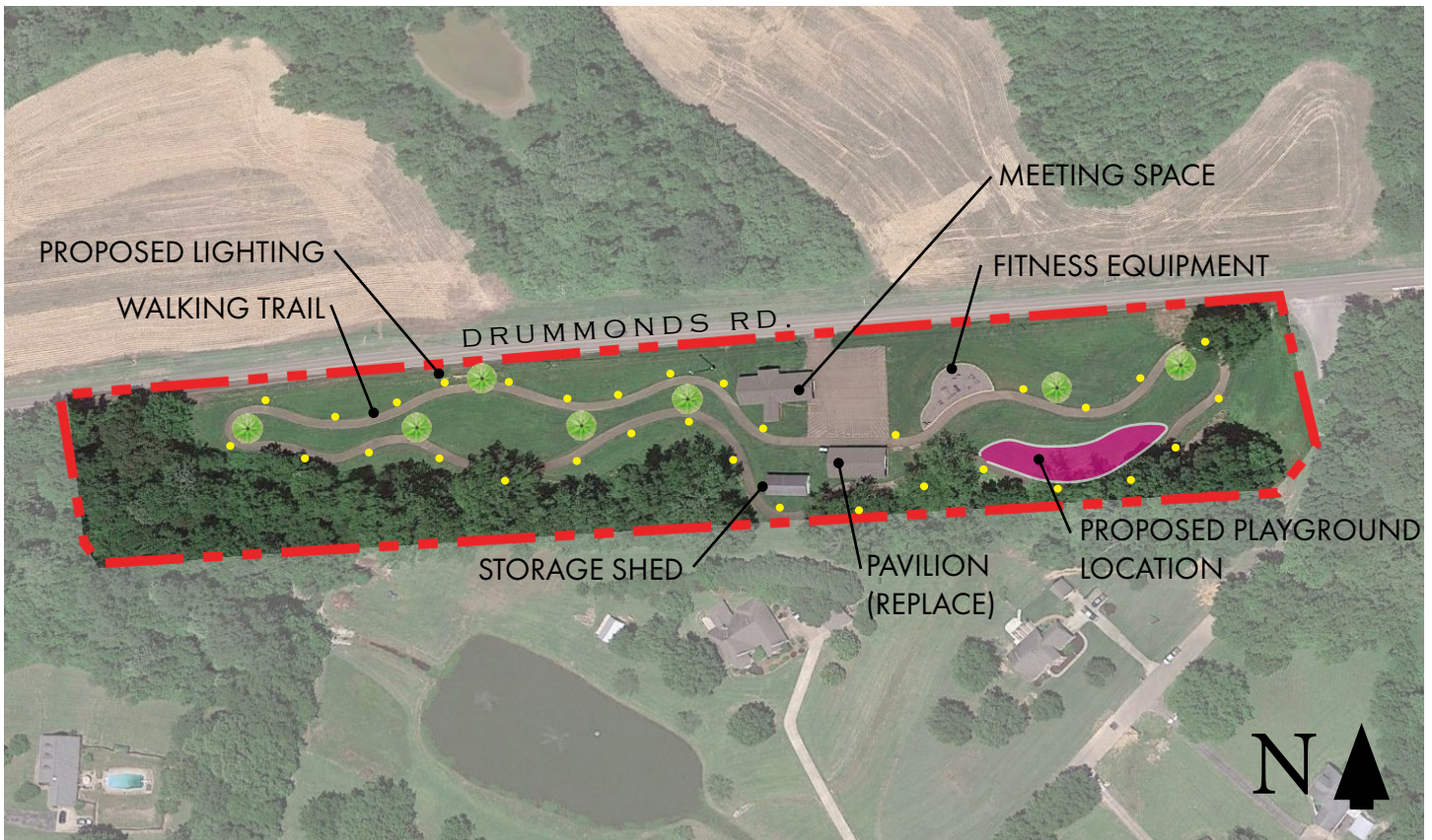
Fitness Area, benches, 1/4 mile walking track, community building (currently being utilized as a local group meeting space), storage shed, pavilion

Notes:

All structures and amenities appear to be in good shape. Pavilion is structurally sound but is dated and could use replacement in the next 10 - 15 years. Walking trail, fitness equipment, and parking lot overlay were funded through a prior LPRF grant project and are ADA compliant.

Desired Improvements:

Additional landscaping, new pavilion, new playground, lighting





PARKS AND RECREATION COMMUNITY CENTER

Location:

63 College St.

Park Type:

Special Use

Size:

2.5 Acres (This includes the regions bank site behind the Rec. Center)

Amenities:

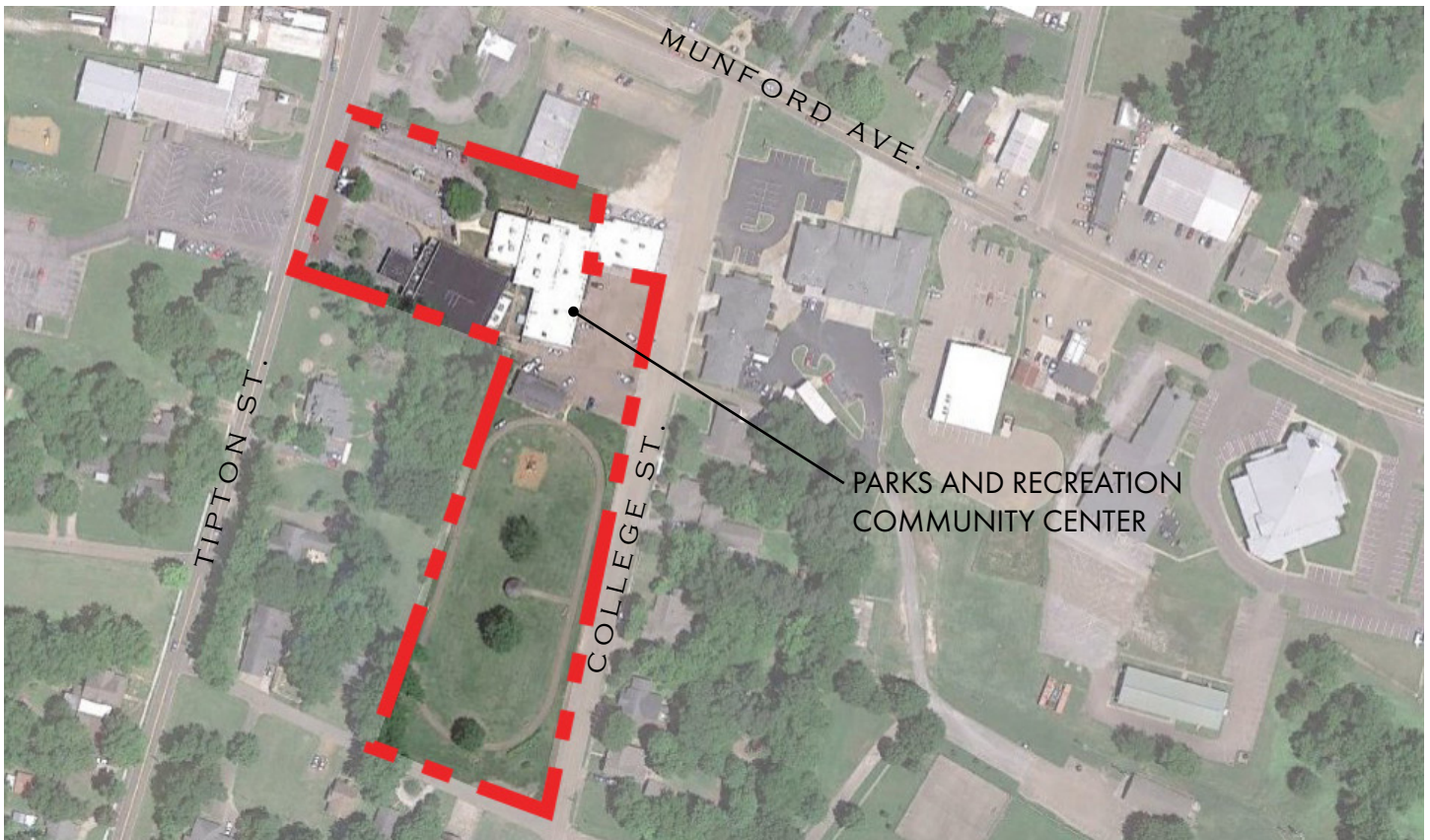
Skating rink, concessions, restrooms, exercise classes, private parties, cheer practice, wrestling practice, office, meeting spaces, arcade games

Notes:

The existing Parks and Recreation office and facility was the former high school cafeteria and was converted to a skating rink. The building is dated and needs significant ADA improvements.

Desired Improvements:

ADA improvements, new finishes, interior renovations, office relocation



PARKS AND RECREATION COMMUNITY CENTER



REGIONS BANK BUILDING (GYM)

Location:

86 Tipton St.

Park Type:

Special Use

Size:

2.5 Acres (This includes the parks and rec community center)

Amenities:

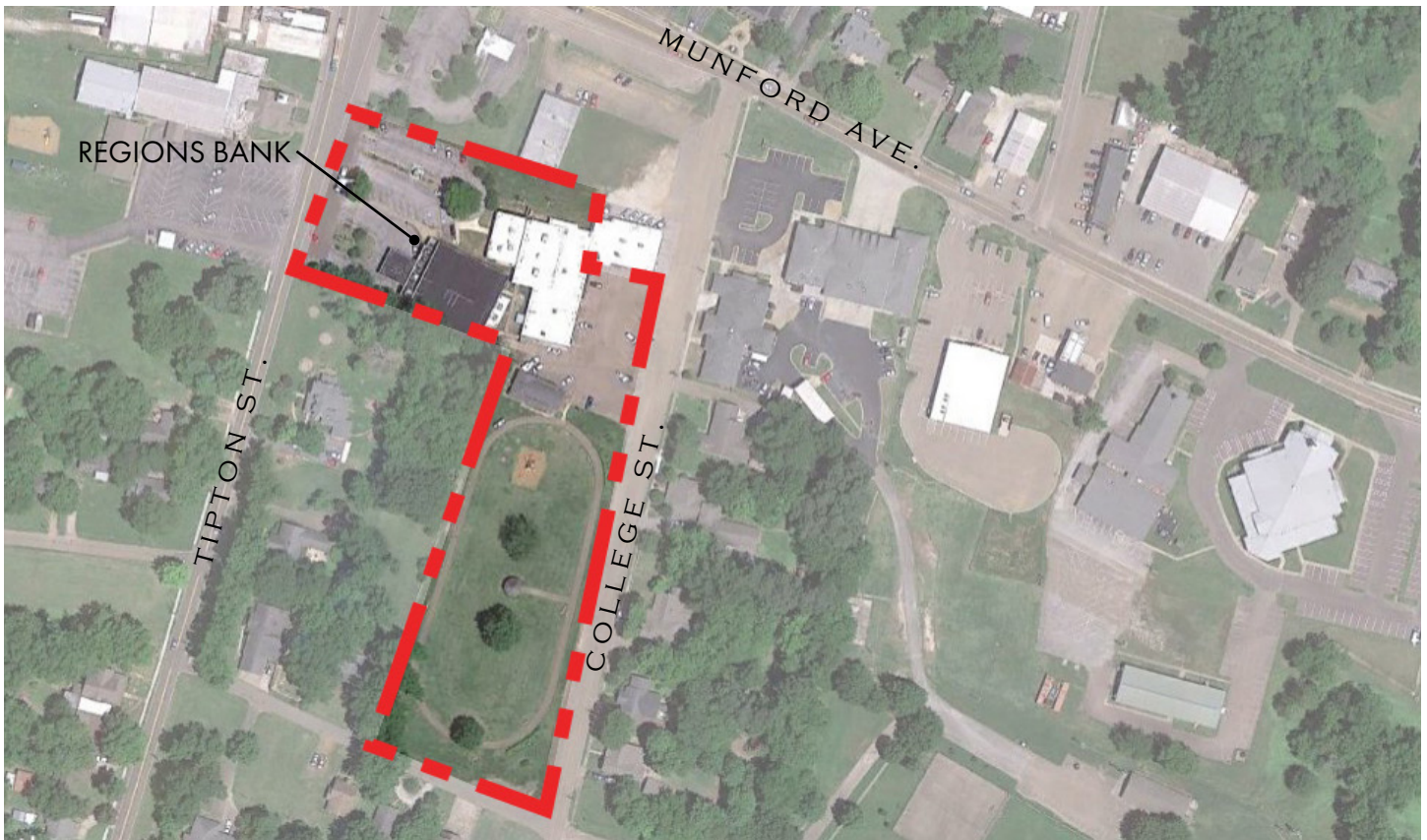
Gym and restroom facilities, kitchen

Notes:

The Regions Bank building is the former high school building and gymnasium. It is owned by the city and leased to Regions Bank for office space. At the rear of the building the gymnasium is still used for basketball and other sports practice.

Desired Improvements:

ADA improvements, kitchen upgrades



REGIONS BANK BUILDING (GYM)



SENIOR CENTER

Location:

63 College St.

Park Type:

Special Use

Size:

2.5 Acres (Senior Center is located on the City Park parcel)

Amenities:

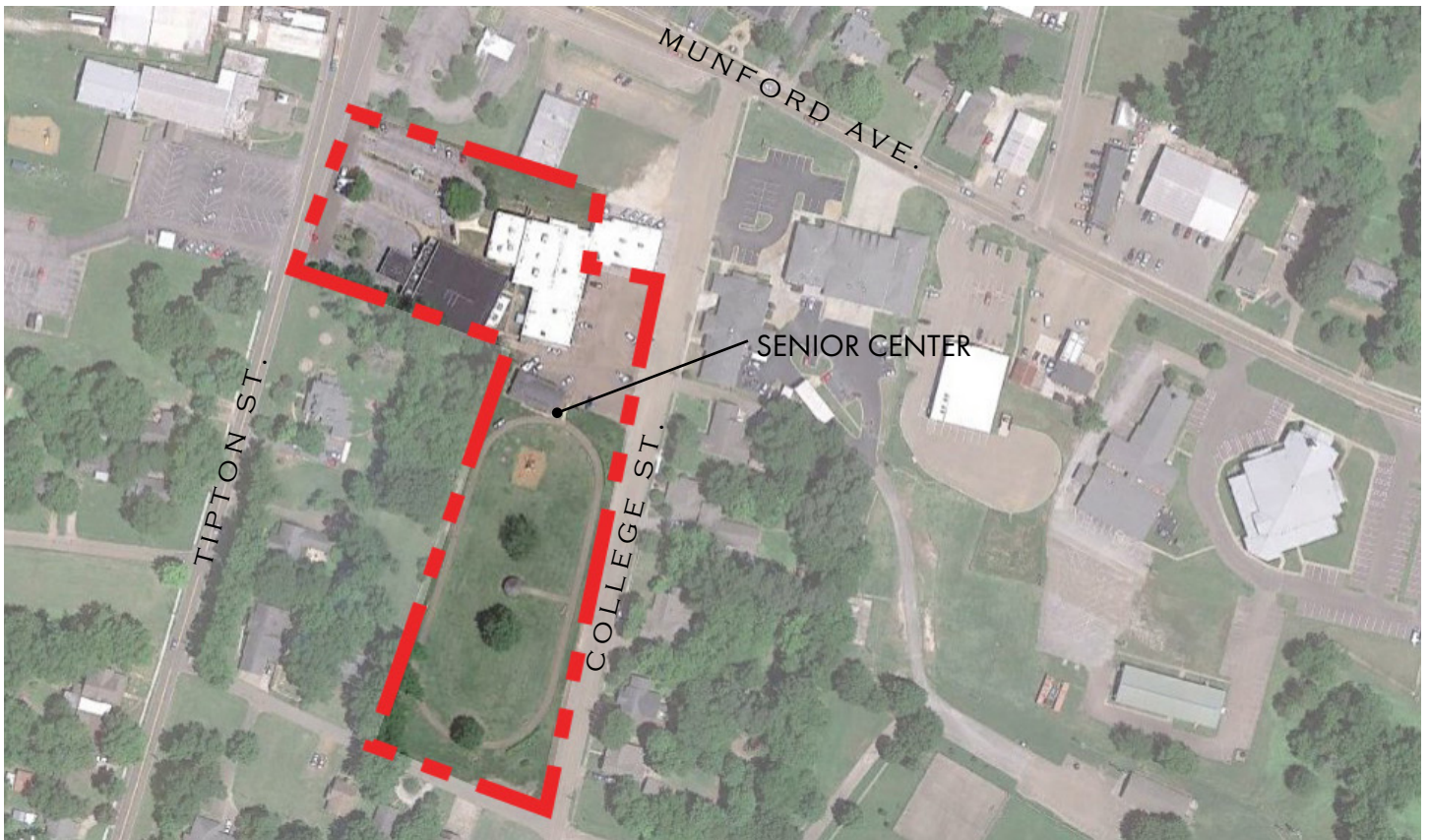
Meeting space, kitchen, restrooms, private parties (up to 50 people)

Notes:

The Senior Center was remodeled recently. It was used as the high school band room prior to the new high school being built. It is in good condition and has some ADA accessibility (ex. exterior ramp entry).

Desired Improvements:

ADA upgrades





POPLAR PARK

Location:

63 College St.

Park Type:

Regional (Used by all of Tipton Co. for youth football)

Size:

6 Acres

Amenities:

Football field, concessions and restrooms, tennis courts, playground, skate park, walking trail, pavilions, picnic tables, benches, open programmed play space

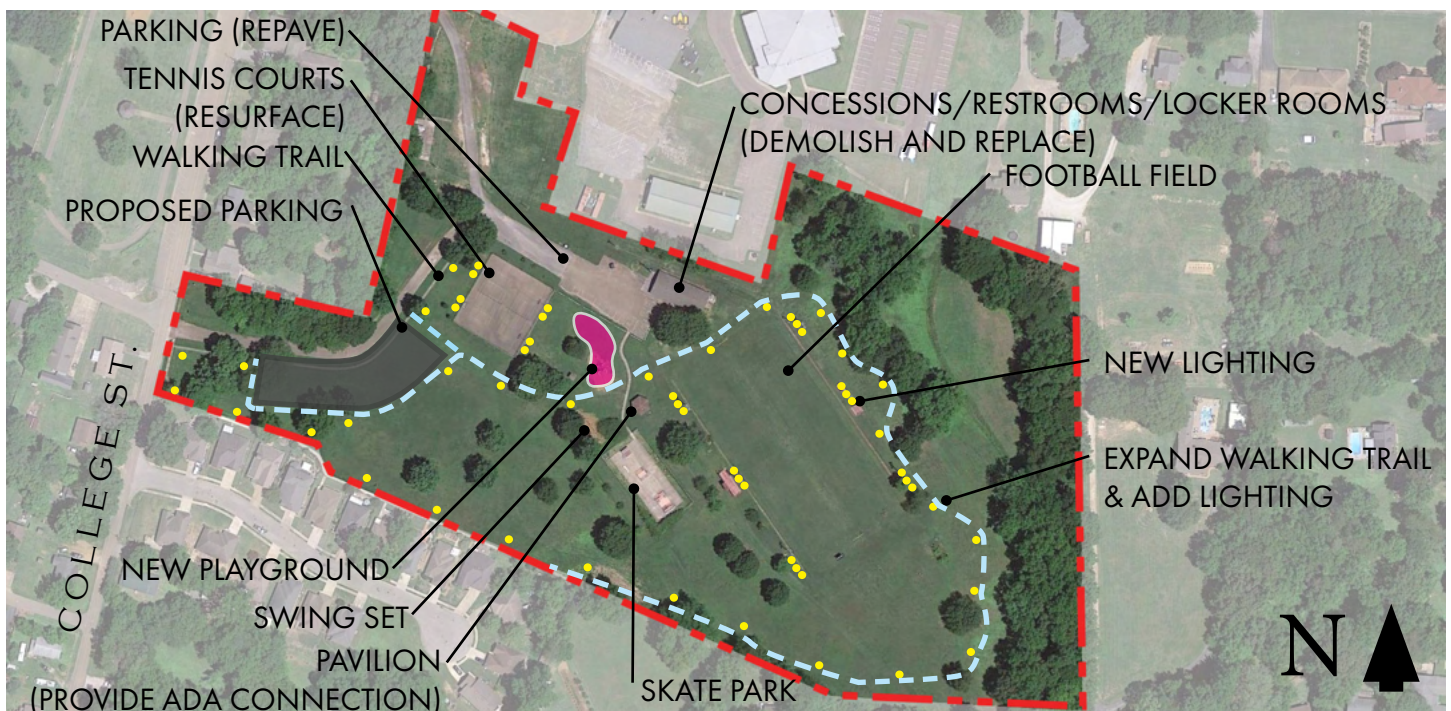
Notes:

Poplar Park was the location of the former high school football field. Given the park's central location, several events are hosted at this park each year (Easter egg drop, July 4th fireworks, baseball and softball practices).

The existing restrooms and concessions are in fair to poor condition and are in need of ADA improvements. The existing playground is not ADA compliant. Pavilions/picnic tables do not have accessible routes.

Desired Improvements:

ADA upgrades, new / remodeled restrooms and concessions, resurface tennis court and add pickleball courts, lighting improvements, vehicular circulation / parking lot improvements, new playground area, new ball field amenities (bleachers, goal posts, score boards, etc.), walking trail





CENTENNIAL PARK

Location:

44 Dacus Dr.

Park Type:

Regional / Special Use

Size:

17 Acres

Amenities:

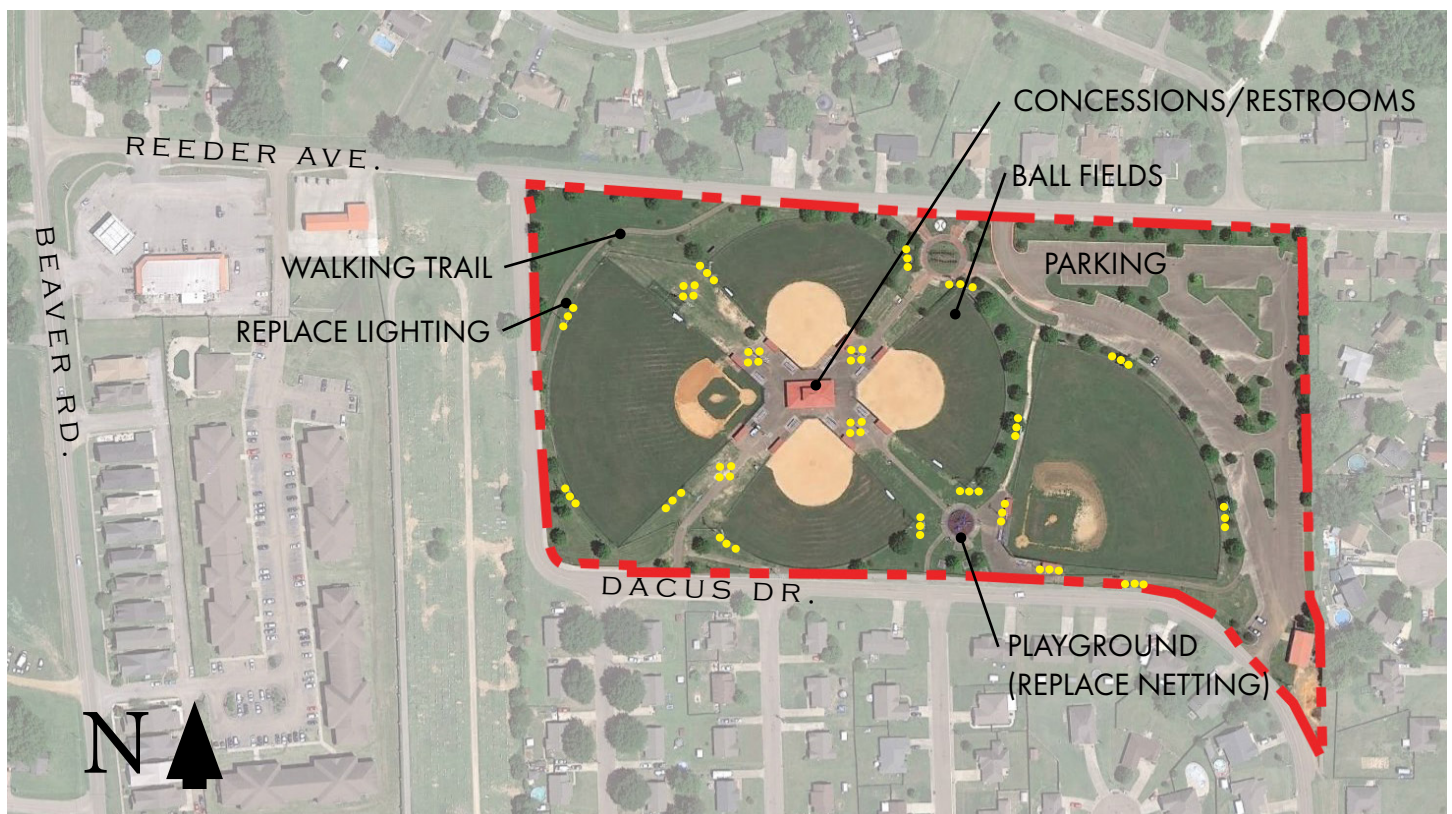
Ball fields (5 total), restrooms and concessions, playground, picnic tables, walking track

Notes:

Centennial Park opened in April of 2006 and is in great condition. The park hosts ball tournaments regularly and hosts on average four 5k races per year.

Desired Improvements:

ADA improvements, new shade netting over playground, playground upgrades, fencing upgrades, artificial turf to replace existing turf, lighting upgrades, batting cages





CITY PARK

Location:

101 College St.

Park Type:

Community

Size:

2 Acres

Amenities:

Walking trail (1/5th mile), gazebo, playground, seating

Notes:

City Park is centrally located and is a mostly passive use park. The walking trail was repaved in 2012 and is in good condition. The park gazebo is a popular destination for weddings. The local car show is also hosted here each September and October.

Desired Improvements:

ADA improvements, playground renovation, lighting upgrades, gazebo improvements, new site amenities





VALENTINE PARK

Location:

1007 Beaver Rd.

Park Type:

Regional

Size:

107 Acres

Amenities:

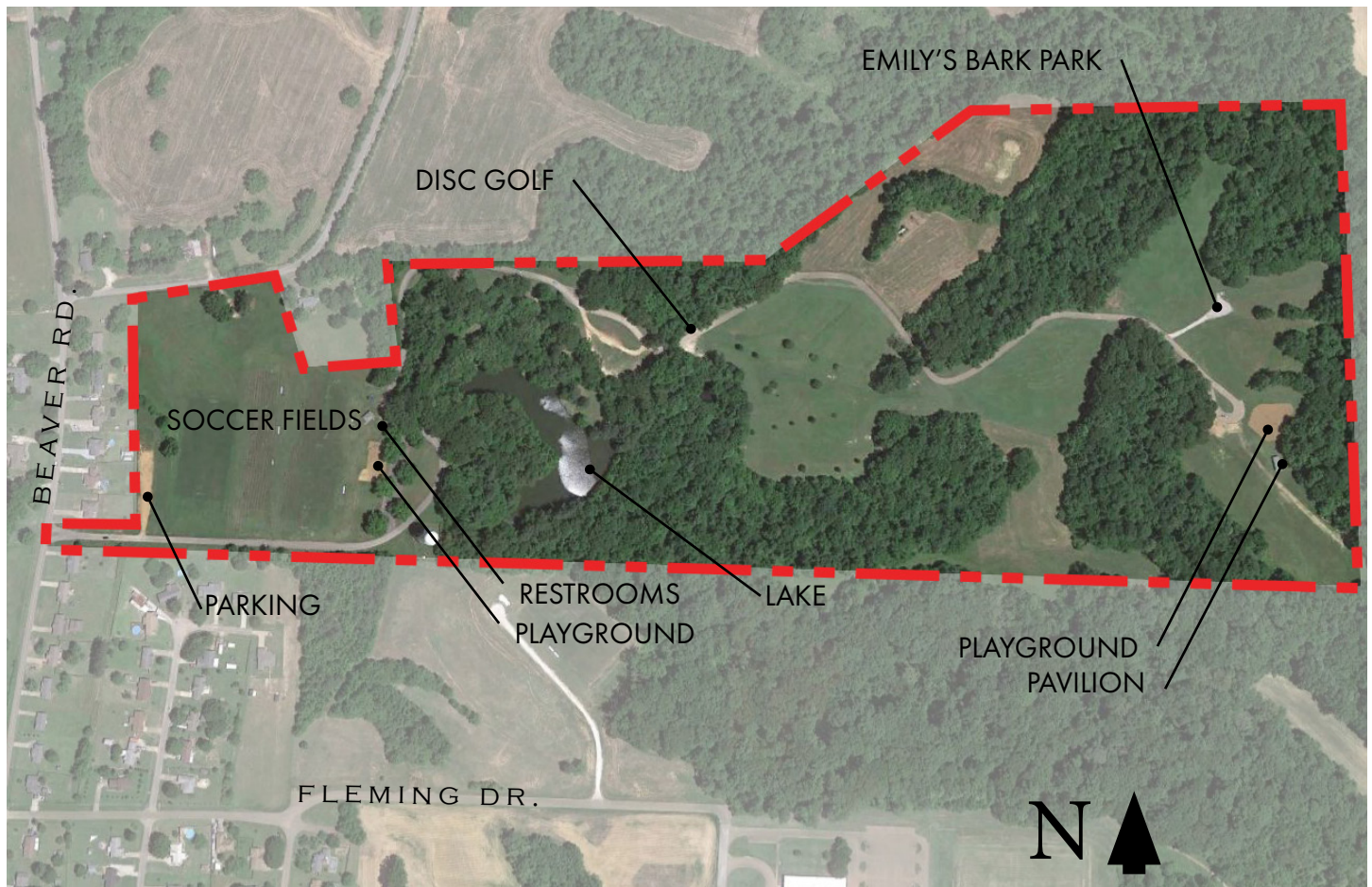
Soccer fields (5 total), restrooms and concessions, playgrounds (2 total), Emily's Bark Park, disc golf (2 18-hole courses), picnic tables, walking trail (shared pedestrian and vehicular way), pavilion, lake

Notes:

Valentine Park is Munford's largest park and has a variety of site amenities to offer citizens. Most of the amenities are in good to great shape. This park is used heavily for soccer games and private rentals.

Desired Improvements - Refer to page 58 for park master plan:

ADA improvements, playground equipment upgrades, vehicular and parking improvements, soccer field renovations, hiking / biking trails, site amenities, lighting improvements, new pavilion, and additional restrooms at northern area of park



VALENTINE PARK





Ritter
COMMUNICATIONS

PHONE
HIGH SPEED
INTERNET
CABLE TV
SECURITY

Library
1476
Market Avenue
901.877.2100 (2465)

ADDITIONAL LIBRARY
PARKING IN THE REAR

Ritter

SECURITY

Ritter

CABLE TV

Ritter

INTERNET

Ritter

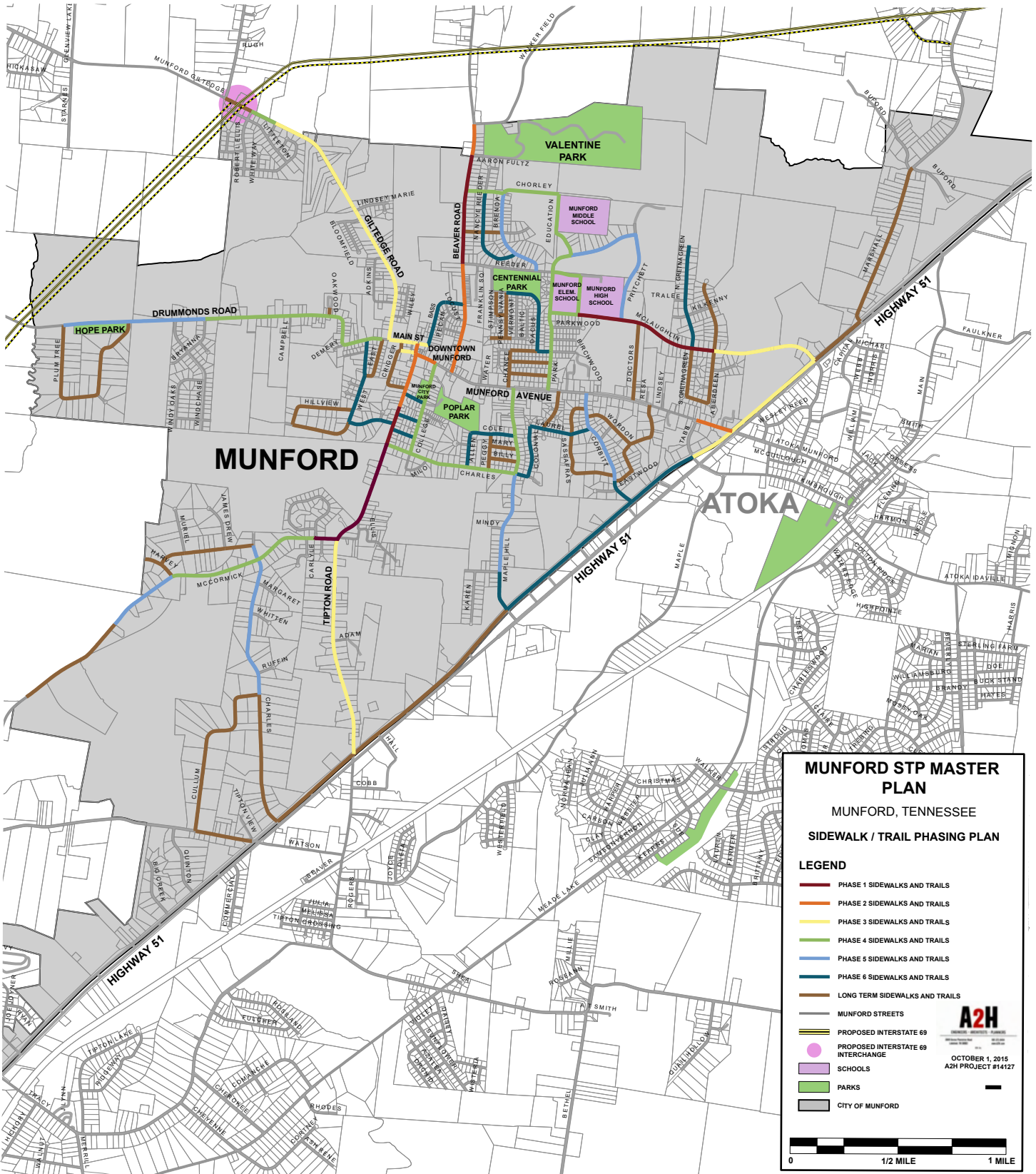
PHONE

MULTIMODAL CONNECTIVITY

- SIDEWALKS
- BIKE LANES - FUTURE CONNECTIVITY

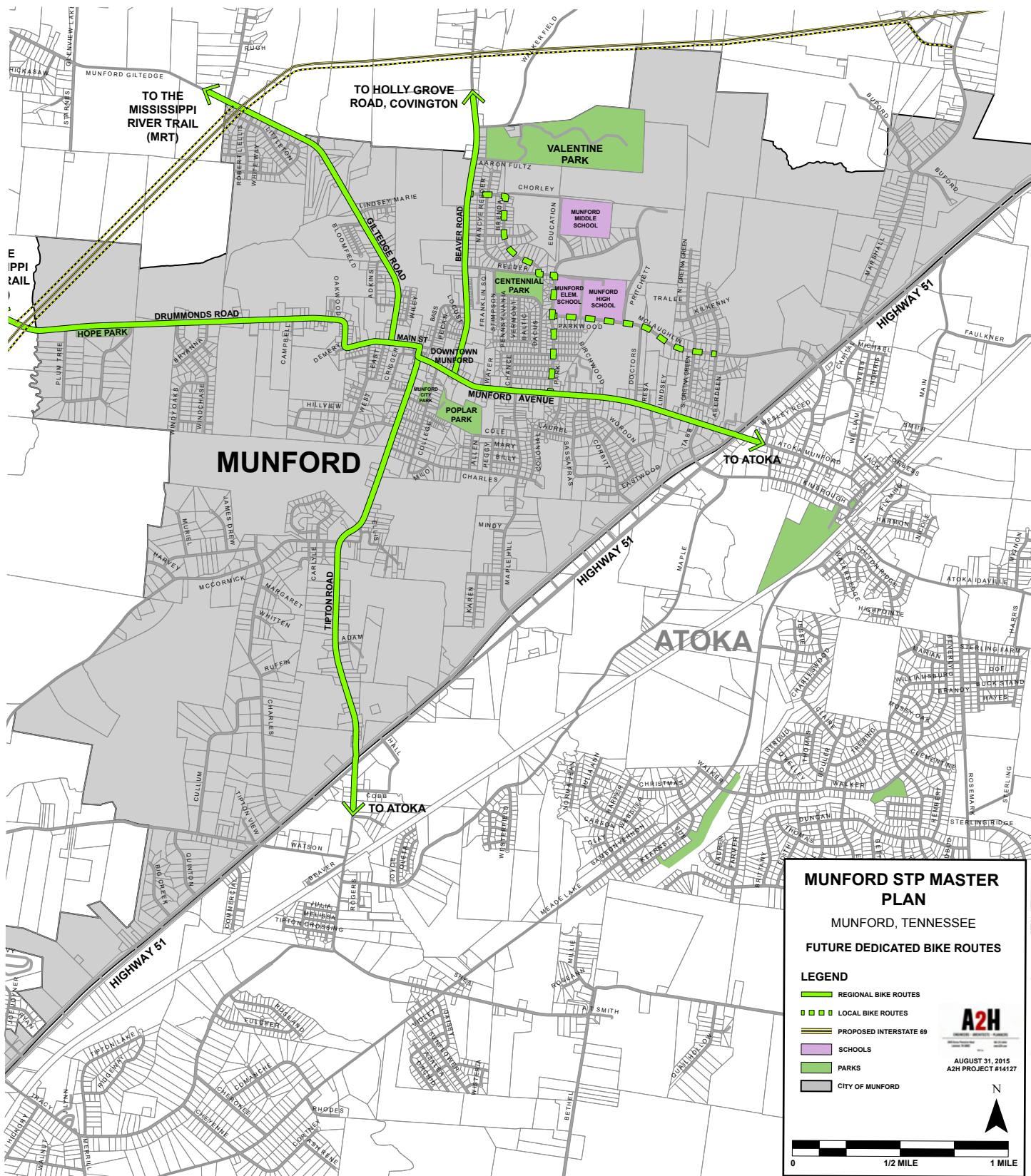
SIDEWALKS

In conjunction with the City's goal of providing a park within a 10 minute walk to every citizen, sidewalks play a critical role in proving safe connectivity and access to all parks. Munford has approximately 13 miles of sidewalks that provide safe pedestrian connections to parks, schools, and businesses. The plan below shows phasing priorities to provide pedestrian connections in the future.



BIKE LANES - FUTURE CONNECTIVITY

Multimodal connections such as bike lanes are an increasingly popular amenity and provide a healthy and sustainable mode of transportation. The plan below shows possible bike lane corridors (both dedicated and shared pathways).





OTHER COMMUNITY RECREATION OFFERINGS

- MUNFORD SCHOOL SYSTEM

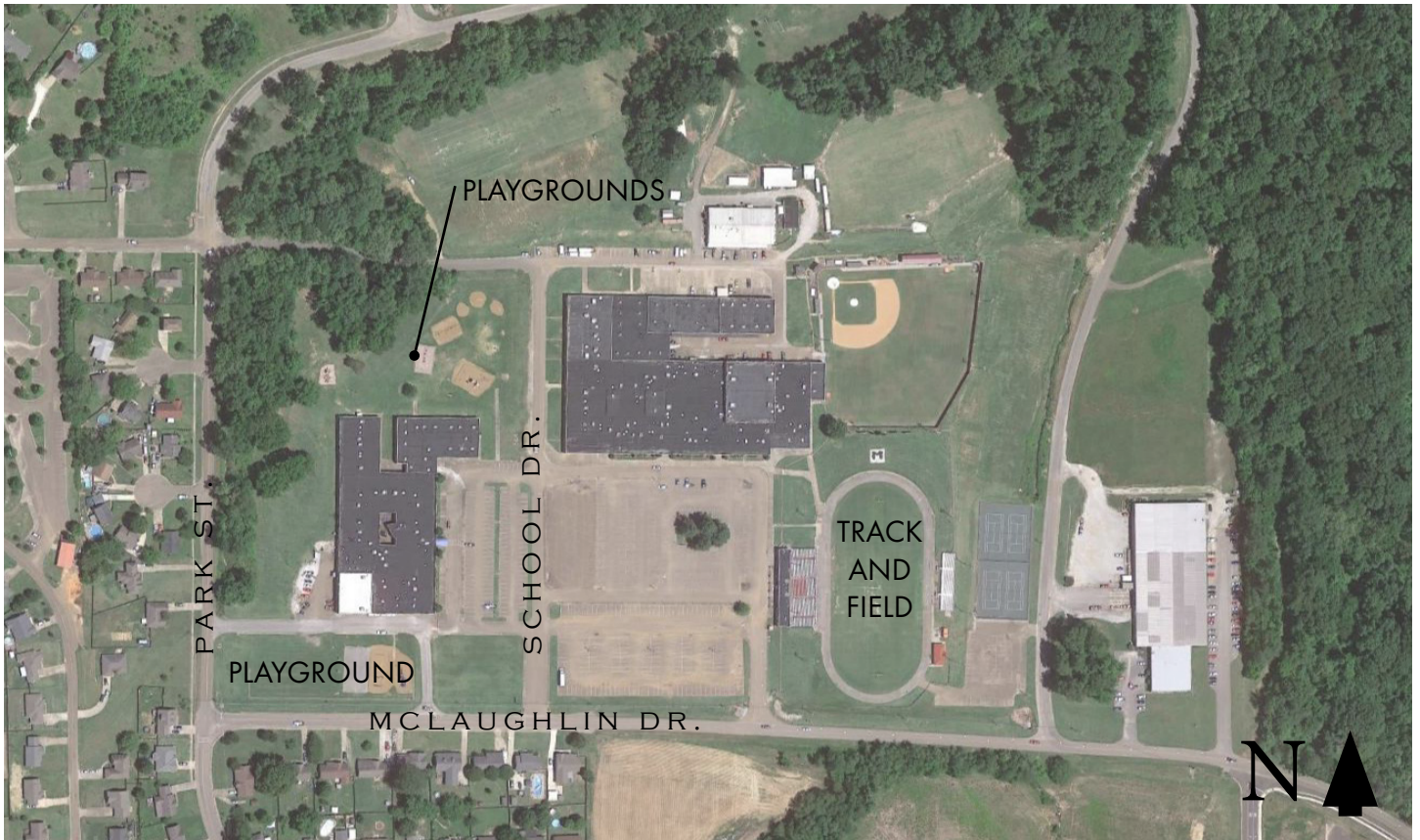
MUNFORD SCHOOL SYSTEM

Location:

1200 McLaughlin Dr.

Notes:

Munford Schools are operated by the Tipton County School district. There are playgrounds on-site that are technically not open for public use. However, they are used by nearby residents and are a recreational asset nonetheless. The high school is also located on the same site, but the football and track are fenced off and not accessible to the public.







FUTURE PARK IMPROVEMENTS

- VETERANS PLAZA
- VALENTINE PARK MASTER PLAN

VETERANS PLAZA

Location:

Southeast Corner of Munford Ave. and Tipton St.

Park Type:

Community

Size:

.93 Acres

Amenities:

Veterans Flag memorial, restrooms, pavilions, stage

Notes:

Veterans Park is unique in that it is centrally located in Munford’s downtown core, providing a convenient and accessible outdoor plaza for people to gather for live music, farmers markets, food truck vendors, outdoor movie nights, and other large gatherings.





VALENTINE PARK MASTER PLAN



SCULPTURAL ENTRYWAY



INCLUSIVE PLAYGROUNDS



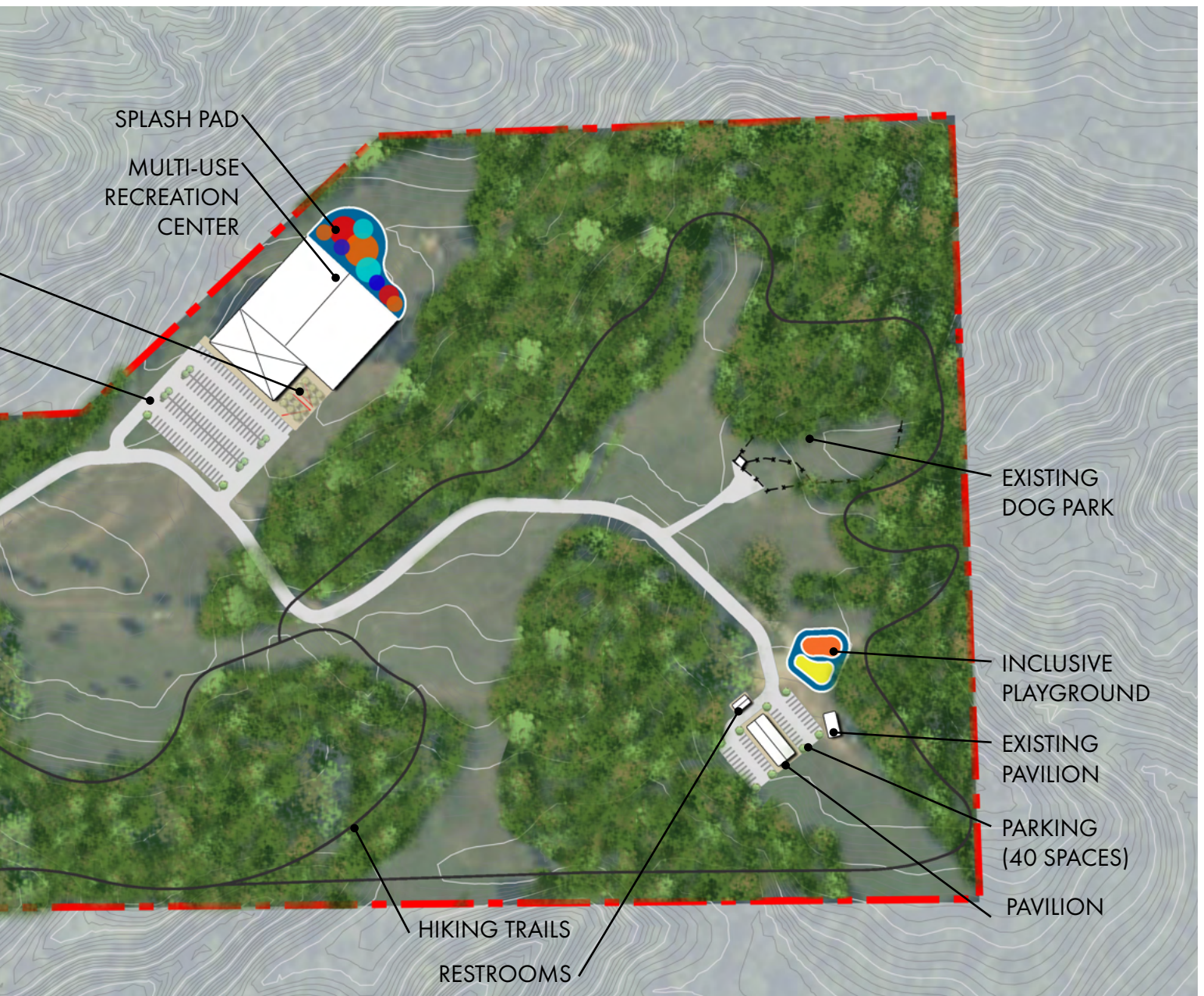
VALENTINE PARK MASTER PLAN



LARGE PAVILION



SPLASH PAD





PARK IMPROVEMENT PRIORITIES AND PHASING

- PARK IMPROVEMENTS TIMELINE
- FUNDING RESOURCES

PARK IMPROVEMENTS TIMELINE

The park and recreation needs of Munford are described in the previous chapters of this report. This chapter recommends a series of actions to begin to address those needs. These are recommendations to guide the staff and city council over the next twelve years, and should be revisited and updated on a regular basis.

The prioritization is based on information received from public input as well as from the community needs assessment. The criteria used to prioritize the park facilities needs in Munford are as follows:

- Level of need based on direct citizen input from public comments;
- Level of need based on standards level of service;
- Opportunities for recreation facilities based on existing physical conditions in or near Munford.
- Condition of existing park facilities.

Needs meeting all or most of the criteria shown above were ranked as high priority elements to receive the highest level of attention over the next twelve years.

The following implementation strategy is recommended to address the highest priorities over the next twelve years.

Short Term - 2021 - 2025

- Construction of the new Veterans Plaza
- Valentine Park - Soccer fields and lighting improvements
- Inclusive playground at Valentine Park near soccer field
- Valentine Park hiking trails
- Ensure all parks have accessible parking and access to amenities (restrooms, picnic tables, gazebos, pavilions, water fountains, etc.)

Mid-Term - 2025-2029

- Multi-use recreation facility
- Poplar Park lighting improvements (football field and tennis court)
- Continue ADA improvements at all parks
- Reconfigure parking lot at Poplar Park
- Asphalt overlay at all parks with asphalt walking trails (City Park, Hope Park, Centennial Park)

Long Term - 2029 - 2033

- Playground renovations - Centennial Park, City Park, Valentine Park (playground by pavilions and restrooms)
- Pavilion and restrooms at Valentine Park
- Centennial Park batting cages and ball fields (artificial turf)
- Lighting improvements at Hope Park
- Concession/restrooms/locker room renovation at Poplar Park
- Renovations to Parks and Rec building

Different parks will require different funding strategies. While improvements to existing parks and most trails can be built with local funds, other park, open space, and trail projects may be able to contend for federal and state funds.

Key City-Generated Funding Sources

General Fund Expenditures

General fund expenditures are primarily used for improvements to existing parks and facilities. Some funding should be set aside annually to cover upgrades to at least one park.

Bond Funds

Consider a bond program to support park improvements within the next five years.

Park Facility Funding through Parkland Dedication Ordinance

Implement a parkland dedication ordinance and/or payment in-lieu of parkland dedication so that it provides some land and/or funding for the development of parks.

Grant Funds

Opportunities to apply for state and federal grants include:

TDOT: Transportation Alternatives Program

Eligible Projects: Bicycle and Pedestrian Infrastructure and some education

Funding available: Approximately \$7.5 million

Funding Match: 20% cash

Tennessee Department of Environment and Conservation, Recreation Educational Services Division:

Local Parks and Recreation Fund (LPRF)

Eligible Projects: Indoor/Outdoor Park and Recreation facilities and Greenways and Trails

City and County governments

Biannual cycle generally in even numbered years

State funding as approved by the Governor

Funding Match: 50% grant to 50% cash or in-kind match, cash/general fund best source

Recreational Trails Program (RTP)

Eligible Projects: Trail construction (hard and natural surfaced), trail head and trail side facilities

Local, State and Federal agencies and Non Profit Organizations with written agreement for trail

management

Grant cycle concurrent with LPRF

Funding Match: 80% grant to 20% match (cash or in-kind match)

Check TDOT, your MPO or RPO and the TDEC websites for up to date information.

