

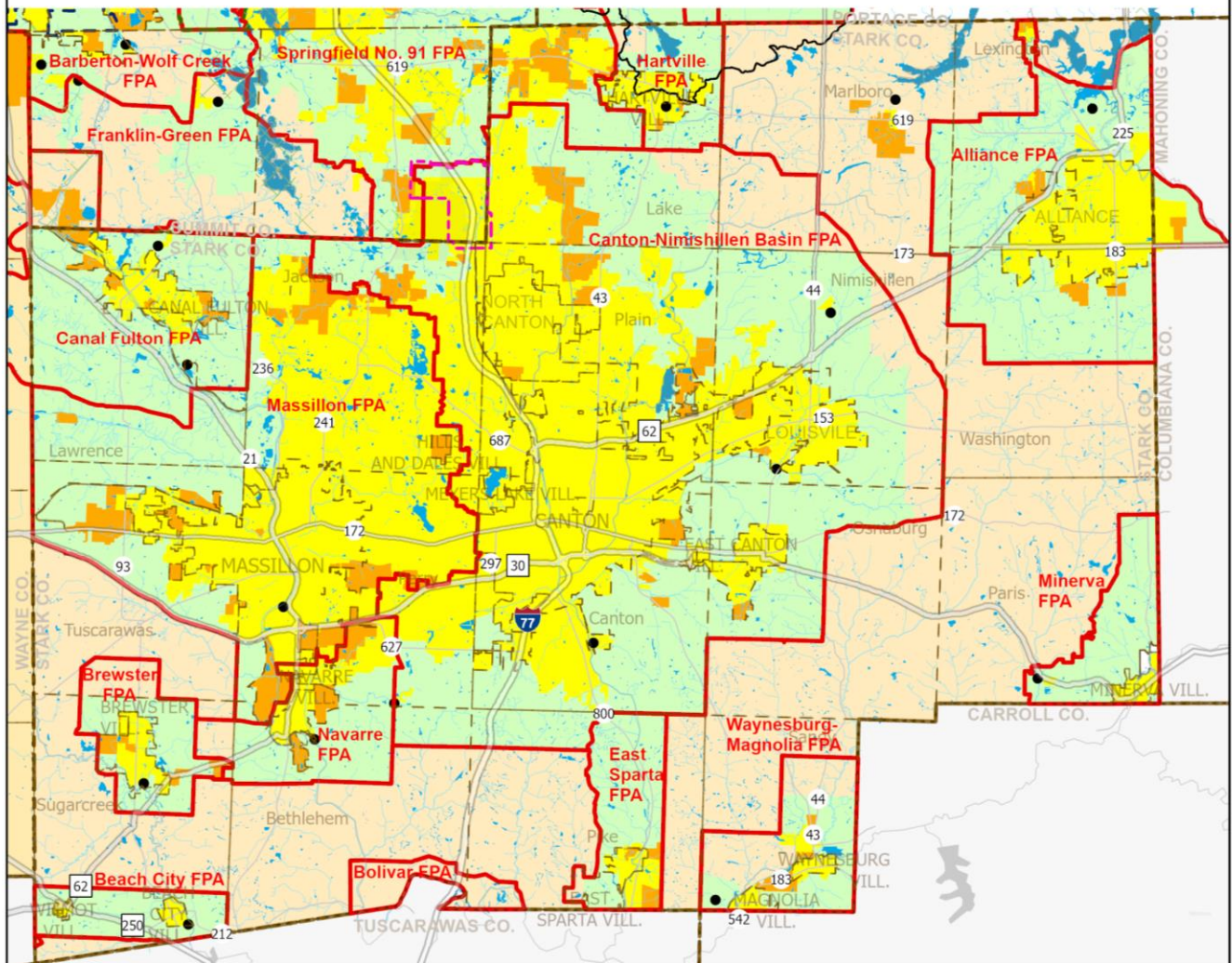
Appendix 3-13

Stark County Facilities Planning Areas (FPA)

Approved by the NEFCO General Policy Board 12/18/2024. This date reflects the latest Board approval of an update or amendment to a portion or all of this FPA.

Stark County Facilities Planning Areas

Clean Water (208) Plan



- Areas Currently Served with Sanitary Sewer
- Areas Expected to be Served with Sanitary Sewers within the next 20 Years
- Areas that will be Served by Home Sewage and Semi-Public Sewage Disposal Systems
- Areas that will be Served by a POTW or by Home Sewage and Semi-Public Sewage Disposal Systems
- Areas Without a Wastewater Treatment Planning Prescription
- Stark-Summit Service Area
- Lakes and Ponds

- Name** FPA Boundary
- Lake Erie Basin-Ohio River Basin Divide
- Name** Community Boundary
- Name** County Boundary
- Numbered Route
- Other Road
- Streams and Rivers
- Publicly Owned Wastewater Treatment Works (POTW)

0 2 4
Miles



Northeast Ohio Four County Regional Planning and Development Organization, 2024

Sources: Stark County GIS; Summit County GIS; Portage County GIS; Ohio EPA; National Hydrologic Database; AMATS; NEFCO; ESRI Human Geography base map

* Please see the FPA Reference Map (Appendix 3-1) for names of adjacent FPAs.

* Please see Clean Water Plan text for a complete explanation of the mapping categories.

Approved by the NEFCO General Policy Board 12/18/2024. This date reflects the latest Board approval of an update or amendment to a portion or all of this FPA.