

Appendix 3-27

Summit County Facilities Planning Areas (FPA)

Approved by the NEFCO General Policy Board 12/18/2024. This date reflects the latest Board approval of an update or amendment to a portion or all of this FPA.

Summit County Facilities Planning Areas

Clean Water (208) Plan

- Areas Currently Served with Sanitary Sewer
- Areas Expected to be Served with Sanitary Sewers within the Next 20 Years
- Areas that will be Served by Home Sewage and Semi-Public Sewage Disposal Systems
- Areas that will be Served by a POTW or by Home Sewage and Semi-Public Sewage Disposal Systems
- Areas Without a Wastewater Treatment Planning Prescription
- Akron Joint Economic Development District Contract Areas
- Barberton-Norton Joint Economic Development District Contract Areas
- Bath Township Water and Sewer District
- Stark-Summit Service Area
- Parks and Natural Areas
- Lakes and Ponds
- FPA Boundary**
- Municipal/Township Boundary**
- County Boundary**
- Numbered Route**
- Streams and Rivers**
- Publicly Owned Wastewater Treatment Works (POTW)**

* Please see Clean Water Plan text for a complete explanation of the mapping categories.

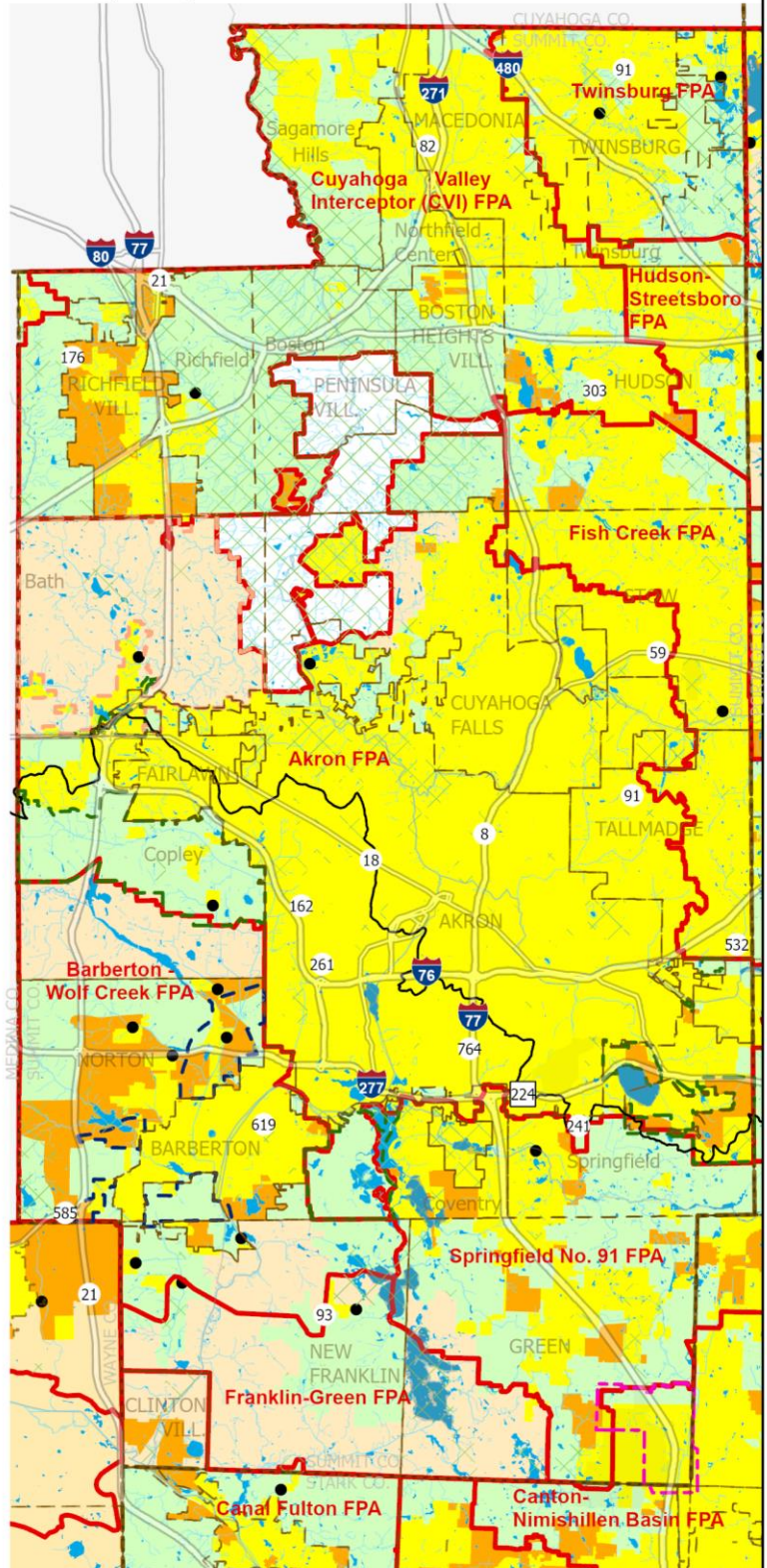
* Please see the FPA Reference Map (Appendix 3-1) for names of adjacent FPAs.



0 2 4
Miles

Northeast Ohio Four County Regional Planning and Development Organization, 2024

Sources: City of Akron; Summit County GIS; Portage County GIS; Stark County GIS; Wayne County GIS; Ohio EPA; National Hydrologic Database; AMATS; NEFCO; ESRI Human Geography base map



Approved by the NEFCO General Policy Board 12/18/2024. This date reflects the latest Board approval of an update or amendment to a portion or all of this FPA.