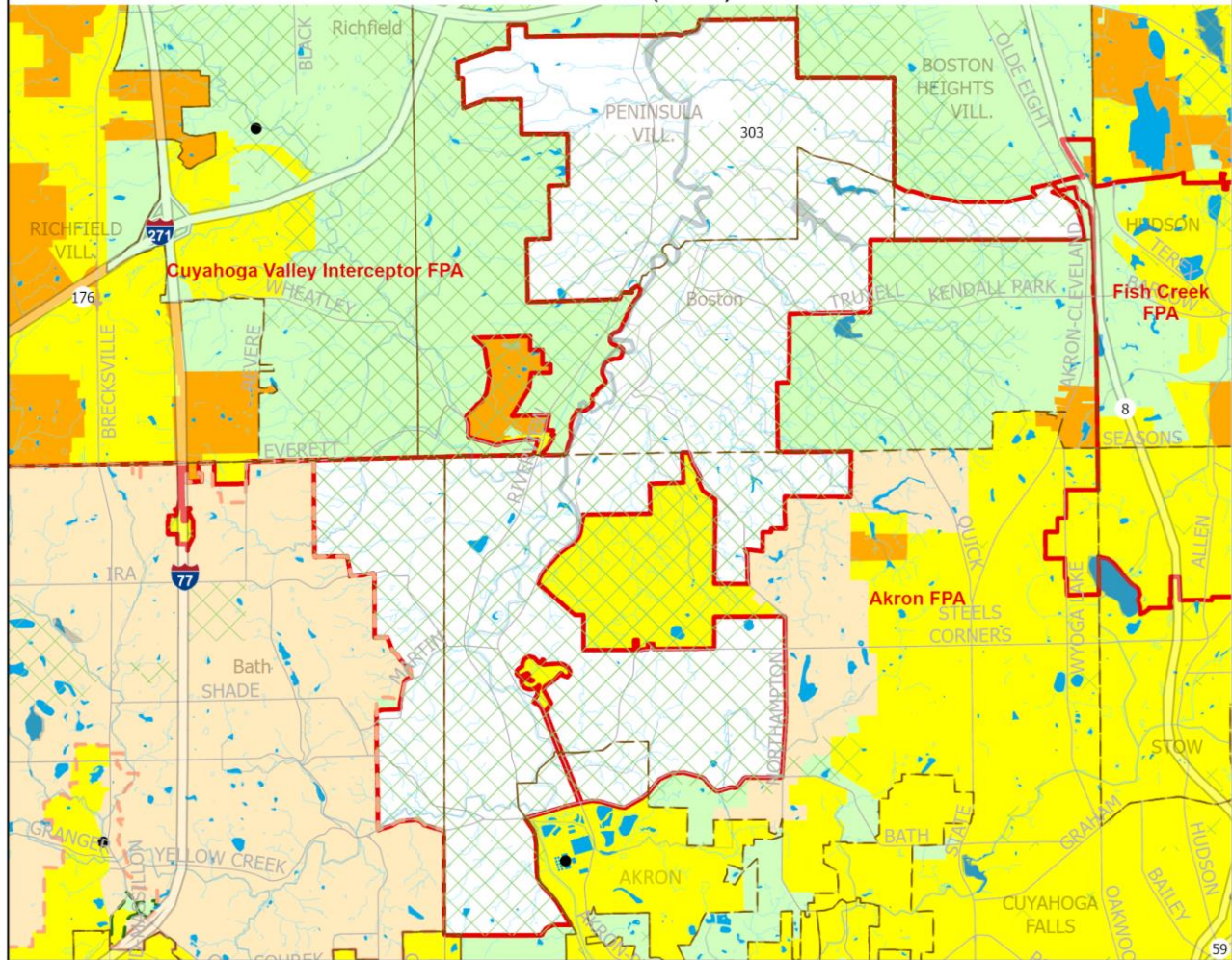


Appendix 3-35

Summit County Metropolitan Sewer District Jurisdiction Areas not part of an FPA

Approved by the NEFCO General Policy Board 12/18/2024. This date reflects the latest Board approval of an update or amendment to a portion or all of this FPA.

Summit County Metropolitan Sewer District Jurisdiction Areas not part of an FPA Clean Water (208) Plan



- Areas Currently Served with Sanitary Sewer
- Areas Expected to be Served with Sanitary Sewers within the next 20 Years
- Areas that will be Served by Home Sewage and Semi-Public Sewage Disposal Systems
- Areas that will be Served by a POTW or by Home Sewage and Semi-Public Sewage Disposal Systems
- Areas Without a Wastewater Treatment Planning Prescription
- Akron Joint Economic Development District Contract Areas
- Bath Township Water and Sewer District
- Parks and Natural Areas
- Lakes and Ponds

- Name** FPA Boundary
- Lake Erie Basin-Ohio River Basin Divide (NHD 2016)
- Name** Municipal/Township Boundary
- Name** County Boundary
- Numbered Route
- Other Road
- Streams and Rivers
- Publicly Owned Wastewater Treatment Works (POTW)

0 0.5 1
Miles



* Please see Clean Water Plan text for a complete explanation of the mapping categories.

* Please see the FPA Reference Map (Appendix 3-1) for names of adjacent FPAs.

Northeast Ohio Four County Regional Planning and Development Organization, 2024
Sources: Summit County GIS; Ohio EPA; National Hydrologic Database; AMATS; NEFCO; ESRI Human Geography base map.

Approved by the NEFCO General Policy Board 12/18/2024. This date reflects the latest Board approval of an update or amendment to a portion or all of this FPA.