



Map Review Tips from Interactive Public Review Map

NEFCO CWP Update 2024

CWP Update 24 Review Mapping Intro

- Review mapping: Static .PDF maps and interactive map

Proposed updates range from single parcel or smaller to large areas/parcel clusters.

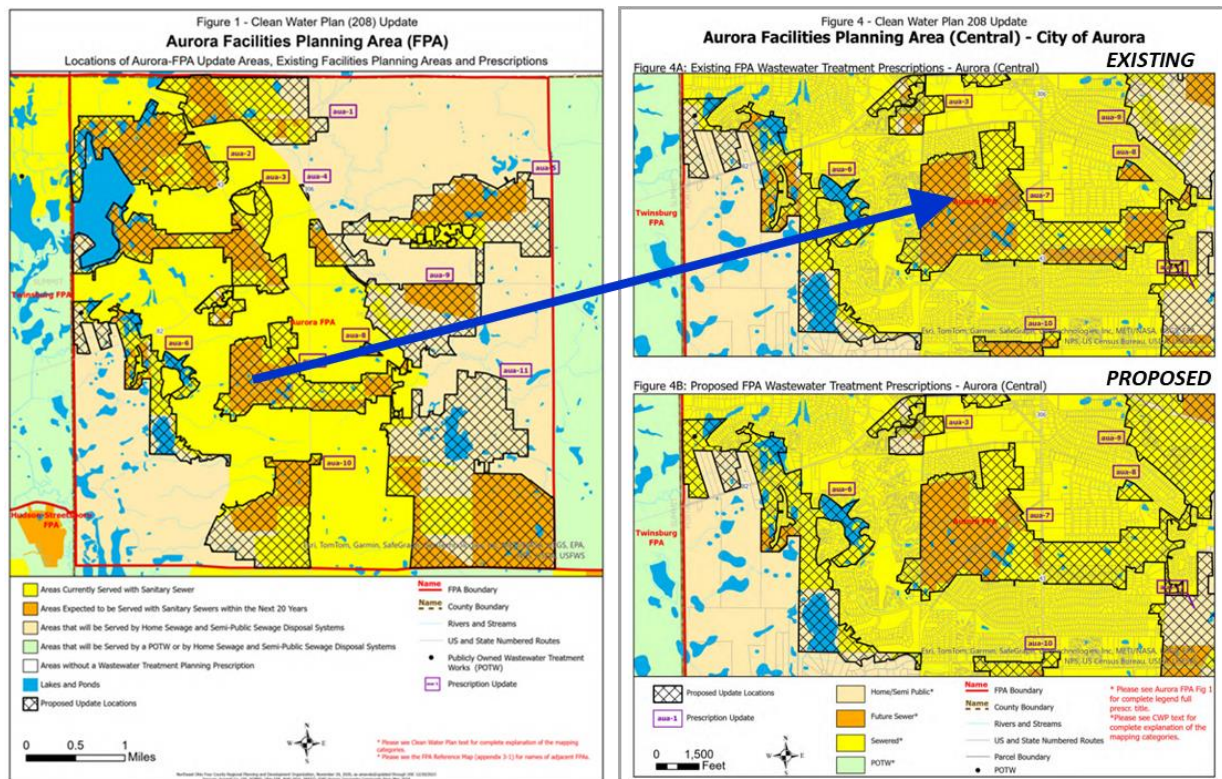
Update maps shown in two map formats – use them together:

- *Static .PDF maps* - overview, larger proposed updates.
- *Interactive map* - zoom in, view small (parcel) proposed updates, turn layers off/on, find information, and insert comments.

Static .PDF Maps - good starting point/reference.

- Links to .PDF maps by county at:
 - CWP Update webpage <https://www.nefcoplanning.org/annual-fpa-update/>; top of the interactive map; Update Area pop-up boxes.
- PDF maps are alphabetical by FPA within each county.
- Each FPA group has a location map and figures of existing and proposed prescription/FPA updates, grouped by hatched Update Areas.

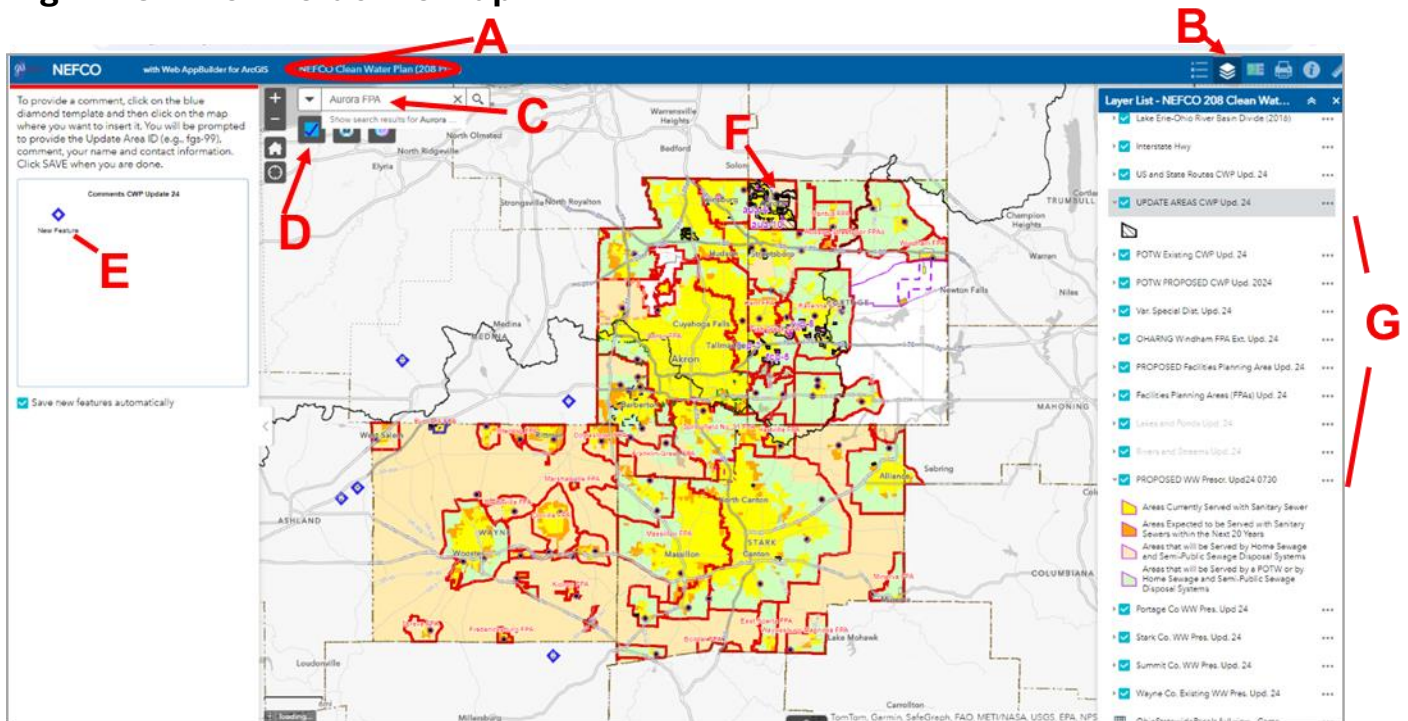
Fig. 1 Static PDF Maps on CWP Update Webpage



- Proposed updates may be interspersed with areas not changing.
- To see small proposed updates – use interactive map and zoom in.

Interactive map - zoom, query info, turn layers off/on.

Fig. 2 – On the Interactive Map

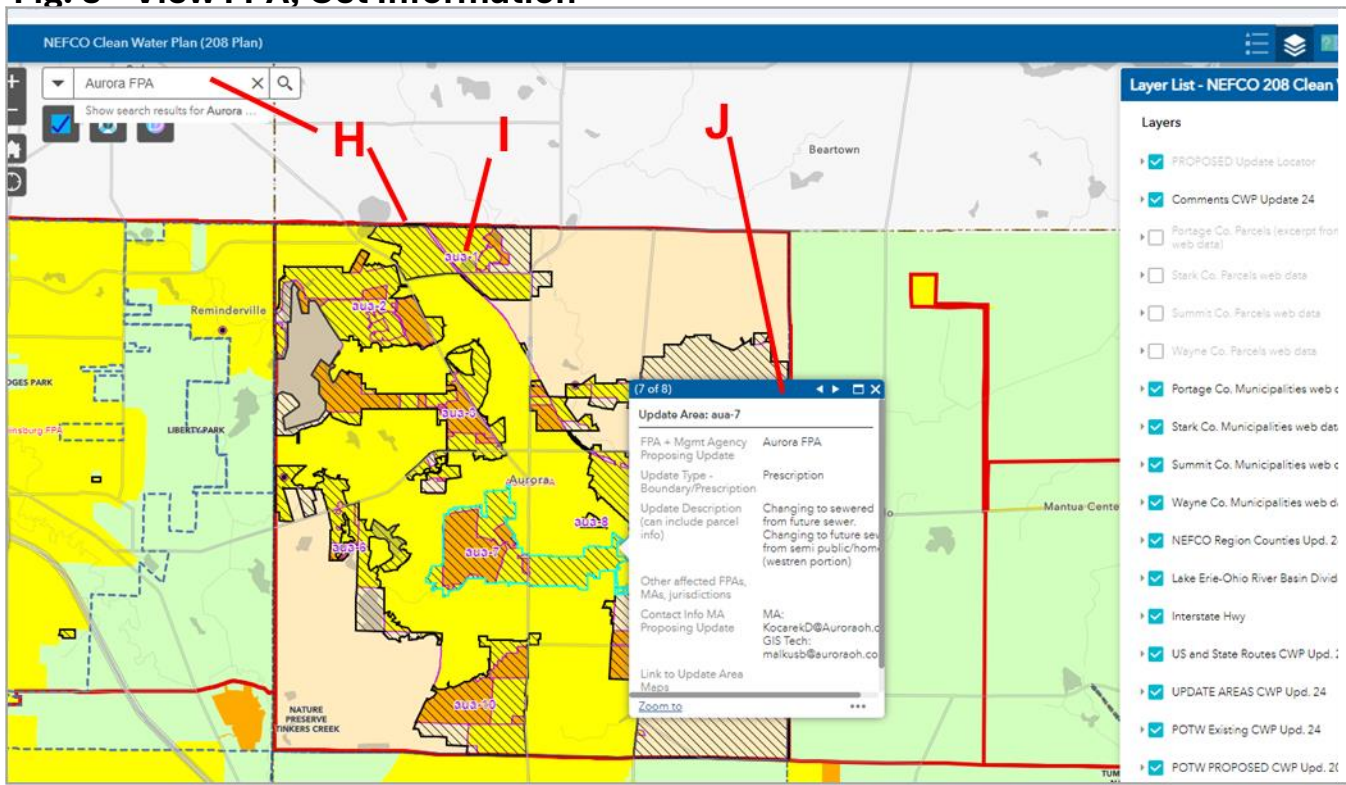


- A. Link to update webpage, .PDF maps
- B. Layers tool (click to show layers)
- C. Search: FPA, parcel, address, Update Area ID
- D. Displays "Map Review Tips"
- E. Comment tool
- F. Update Areas, labels display when zoomed in.
- G. Using Layers
 - Click triangle ► to show symbols.
 - Check box ☒ to turn layer off/on
 - Greyed-out layers will show when zoomed in.

Using the Interactive Map - Zoom, Info, Existing/Proposed, Update Locators

Find area to review - Zoom or search on FPA, Update Area, parcel, address.

Fig. 3 – View FPA, Get Information



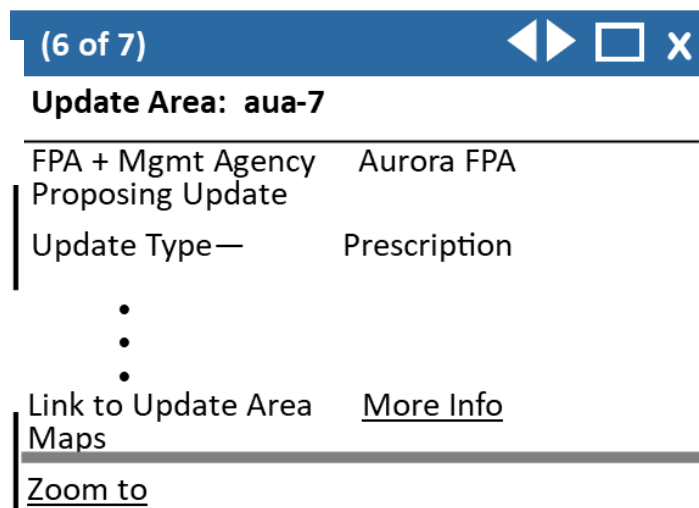
H. Zoomed in to Aurora FPA.

I. Update areas and labels show when zoomed in.

J. Click map to show pop-up boxes with info about layers at that location.

- Click white triangle to see pop-up box for each layer.
- Example: Box 6 of 7 has Update Area info.

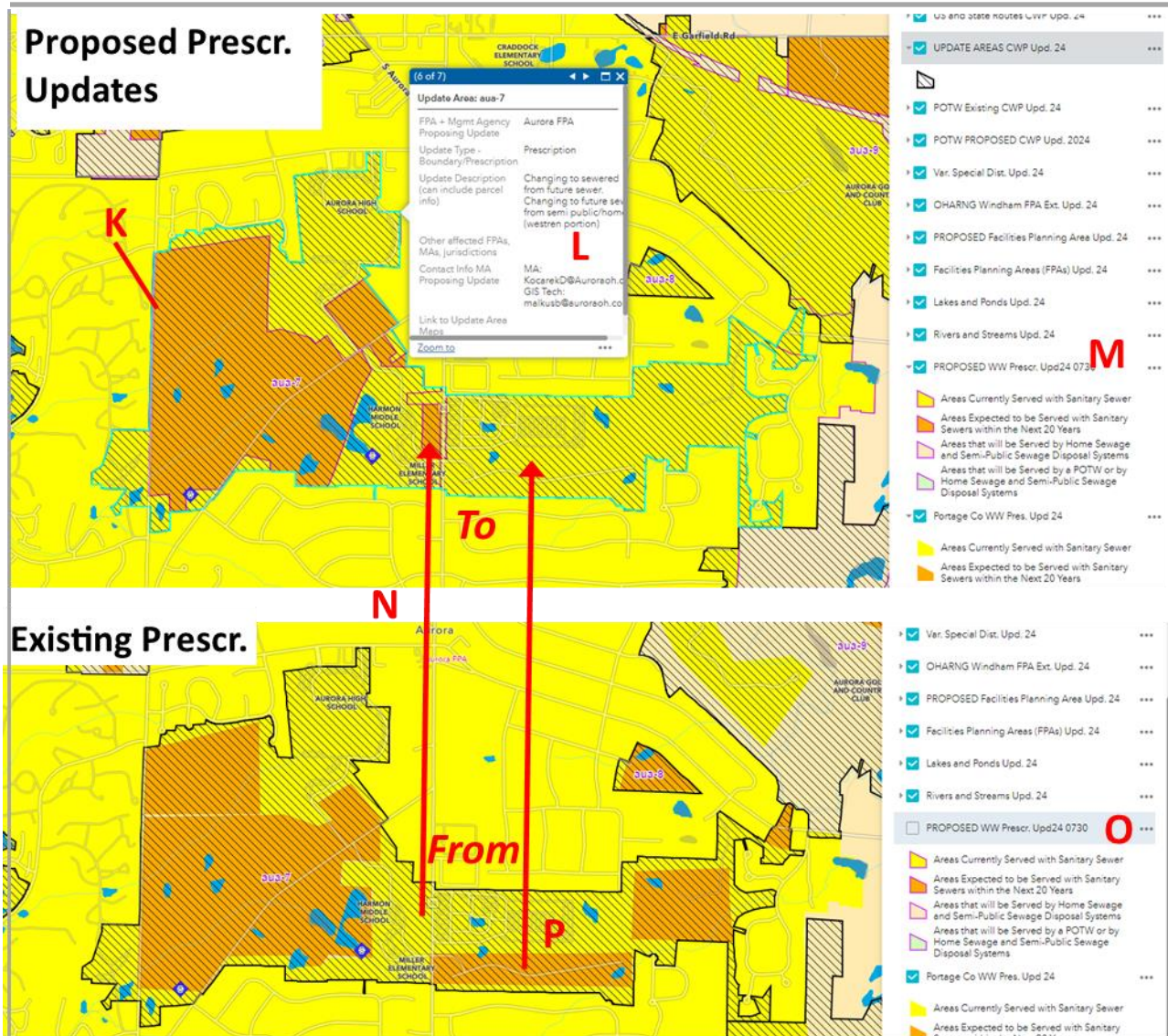
**Fig. 4 – Pop-Up Box
Update Area aua-7**



- More Info - link to .PDF maps.
- Zoom to - zoom to **aua** highlighted feature.

Zoom in Further - More detail, compare existing/proposed, add comments

Fig. 5 – Zoom to Update Area, Compare Prescriptions (Proposed-Existing)



K - Zoomed to Update Area aua-7, cross-hatched, labeled, proposed updates outlined in magenta.

L - Layer pop-up boxes include Update Area, proposed, existing info.

M - PROPOSED layer is on *TOP* of Existing. PROPOSED is **on**, visible.

N - Prescription would change *to* TOP (proposed) *from* BOTTOM (existing).

O - Turn *OFF* Proposed to see Existing.

P - Why is there so much area without change?? Zoom to parcel level (Fig. 6) to see the most detail.

-> Add comments at appropriate zoom for precision (see Fig 6).

T - EXISTING prescription color is **orange** in *part* of the update (Fig. 5 "P"), highlighted in a **blue outline** in Fig. 6. The PROPOSED update prescription color is **yellow** and includes *all the parcels* that would be partially or completely affected.

- Turn PROPOSED prescription layer off/on to see EXISTING/PROPOSED (Fig. 5)
- Click map to see pop-up box, scroll to EXISTING Prescription. A **blue outline** shows the location of the EXISTING orange prescription color (Fig 5, "P"). The EXISTING orange is only a *portion* of the entire update (**magenta-outlined**).
- The areas within the blue highlights would *change* from EXISTING **orange** to PROPOSED **yellow** (Fig. 5 "P" and Fig. 6) The other areas would *remain yellow*. The entire area is included in the update (**magenta-outlined**), because *all the parcels* in the area are at least partially affected.

NOTE:

Unchanged parcels may be interspersed with proposed updates to simplify graphics.

- Zoom in to parcels, use **magenta outlines** and locators **▲** to see updates.

U - Add a comment. **U1** - Click on blue diamond New Feature **◆**. **U2** - Hover over the area where you would like the comment, then click to insert comment.

V - After you insert the comment you can fill in the comment form.

W - The blue dot is the temporary comment symbol. You can move the comment icon and edit the comments when the symbol is a blue dot.

X - When you are done, click *Save* to save the data to the database. The comment icon becomes the blue diamond. **◆** The comment and point are now part of the database.

If you wish to discard the comment and point, click on *Close* without saving.