

# **Appendix 3-27**

## **Summit County Facilities Planning Areas (FPA)**

Approved by the NEFCO General Policy Board 11/19/2025. This date reflects the latest Board approval of an update or amendment to a portion or all of this FPA.

# Summit County Facilities Planning Areas

## Clean Water (208) Plan

- Areas Currently Served with Sanitary Sewer
- Areas Expected to be Served with Sanitary Sewers within the Next 20 Years
- Areas that will be Served by Home Sewage and Semi-Public Sewage Disposal Systems
- Areas that will be Served by a POTW or by Home Sewage and Semi-Public Sewage Disposal Systems
- Areas Without a Wastewater Treatment Planning Prescription
- Akron Joint Economic Development District Contract Areas
- Barberton-Norton Joint Economic Development District Contract Areas
- Bath Township Water and Sewer District
- Stark-Summit Service Area
- Parks and Natural Areas
- Lakes and Ponds
- Name** FPA Boundary
- NAME** Municipal Boundary (City, Village)
- Name** Township Boundary
- NAME** County Boundary
- Numbered Route
- Streams and Rivers
- Publicly Owned Wastewater Treatment Works (POTW)

\* Please see Clean Water Plan text for a complete explanation of the mapping categories.

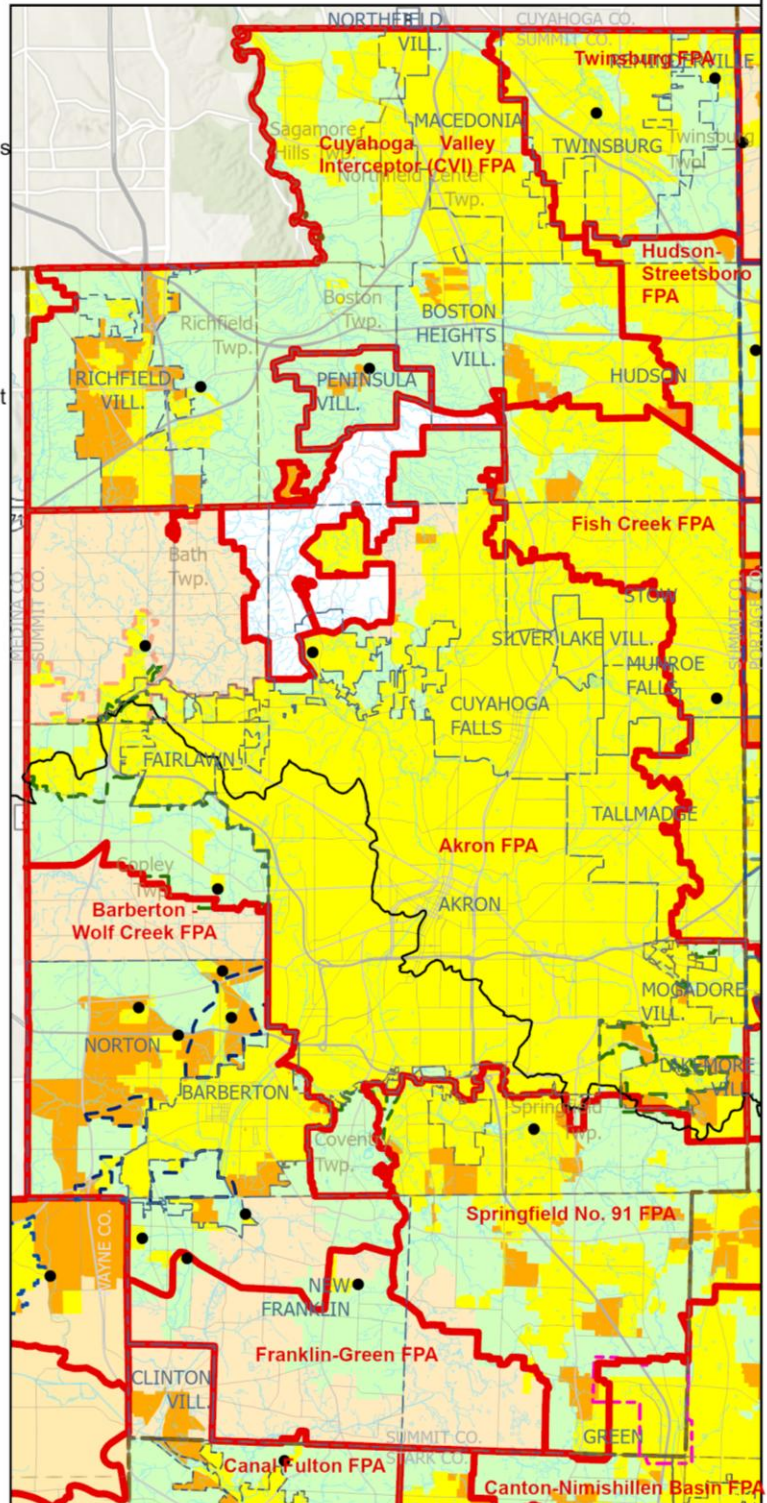
\* Please see the FPA Reference Map (Appendix 3-1) for names of adjacent FPAs.



0 2 4  
Miles

Northeast Ohio Four County Regional Planning and Development Organization, 2025

Sources: City of Akron; Summit County GIS; Portage County GIS; Stark County GIS; Wayne County GIS; Ohio EPA; National Hydrologic Database; AMATS; NEFCO; ESRI Human Geography base map



Approved by the NEFCO General Policy Board 11/19/2025. This date reflects the latest Board approval of an update or amendment to a portion or all of this FPA.