

Appendix 3-31

Fish Creek
Facilities Planning Area

Approved by the NEFCO General Policy Board
7/20/2022

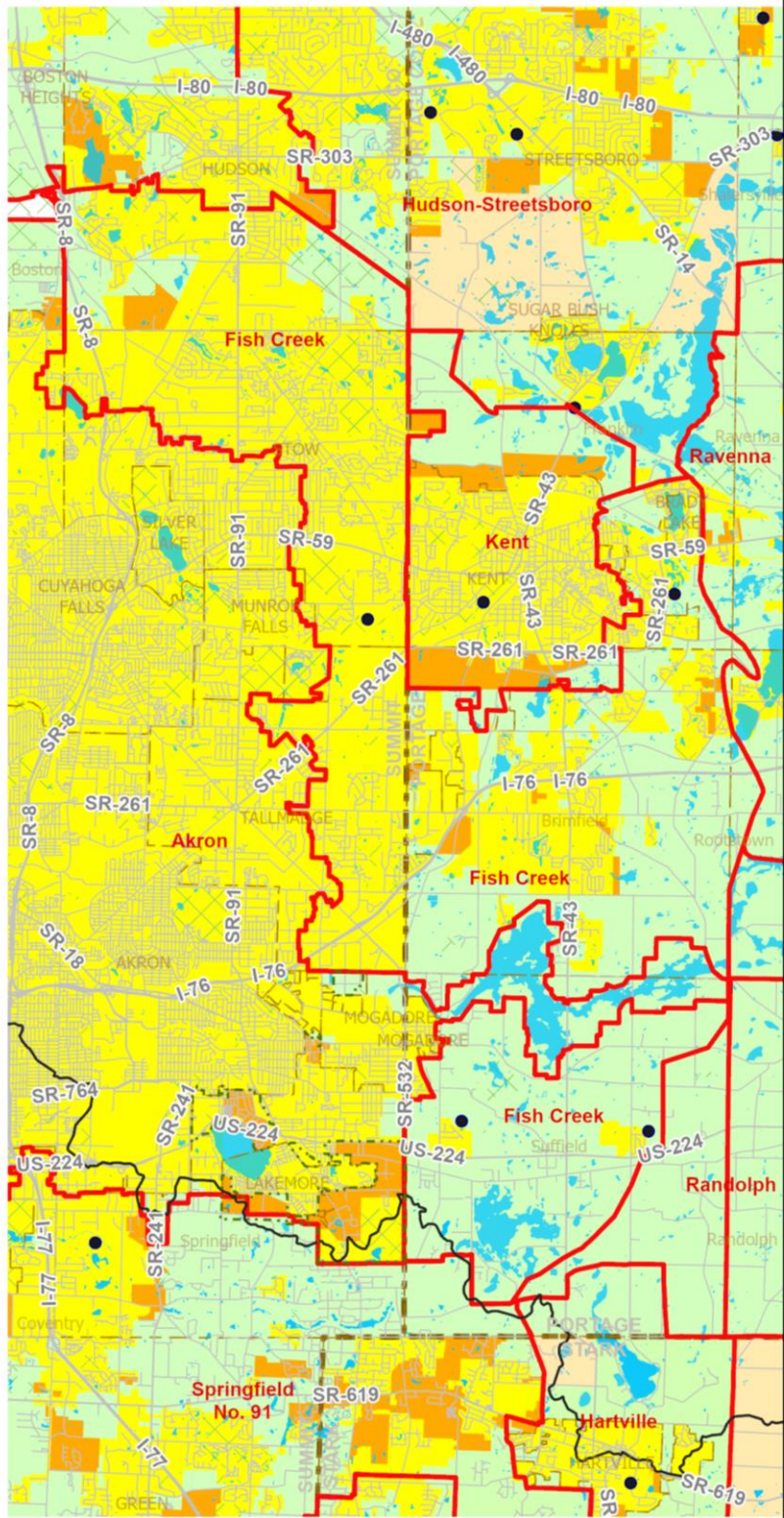
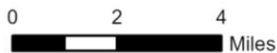
Fish Creek Facilities Planning Area

208 Clean Water Plan

- Areas Currently Served with Sanitary Sewer
- Areas Expected to be Served with Sanitary Sewers within the Next 20 Years
- Areas that will be Served by Home Sewage and Semi-Public Sewage Disposal Systems
- Areas that will be Served by a POTW or by Home Sewage and Semi-Public Sewage Disposal Systems
- Areas Without a Wastewater Treatment Planning Prescription
- Akron Joint Economic Development District Contract Areas
- Parks and Conservation Areas
- Lakes and Ponds
- FPA Boundary
- Lake Erie Basin-Ohio River Basin Divide (NHD 2016)
- Stream
- Community Boundary
- County Boundary
- Numbered Route
- Other Road
- Publicly Owned Wastewater Treatment Works (POTW)

* Please see Clean Water Plan text for a complete explanation of the mapping categories.

* Please see the FPA Reference Map (Appendix 3-1) for names of adjacent FPAs .



Northeast Ohio Four County Regional Planning and Development Organization, 2022. Sources: City of Akron; Summit County GIS; Portage County GIS; Ohio EPA; National Hydrologic Database; AMATS; NEFCO; ESRI base map.

Approved by the NEFCO General Policy Board
7/20/2022

Fish Creek Facilities Planning Area

I. Existing Situation

A. County/Basin:

Summit/Lake Erie

B. Facilities Planning Area:

Fish Creek

C. Management Agency (MA):

I. Primary MA

- a) Summit County Department of Sanitary Sewer Services

II. Secondary MAs

- a) Portage County Water Resources Department (Portage County Regional Sewer District)
- b) Summit County Metropolitan Sewer District SCMSD (Dept. of Sanitary Sewer Services)
- c) City of Hudson
- d) City of Tallmadge
- e) City of Cuyahoga Falls

D. Publicly-Owned Treatment Works:

- a) Fish Creek WWTP, 8.000 MGD
- b) Franklin Hills WWTP, 1.000 MGD
- c) Portage County Regional Sewer District - Fairlane Estates, 0.0520 MGD
- d) Portage County Regional Sewer District - Rivermoor Estates, 0.0430 MGD

E. Facilities Plan:

John David Jones & Associates, Inc., Fish Creek Facilities Plan, March 1975

F. Area Served:

City of Hudson (part), City of Stow (part), City of Munroe Falls (part), City of Tallmadge (part), Brimfield Township (part), Suffield Township (part), Rootstown Township (part), Franklin Township (part), City of Cuyahoga Falls (part)

G. Receiving Stream:

- a) Cuyahoga River
- b) Breakneck Creek

H. Contact Person/Address/Phone/Fax:

Summit County

Michael Vinay, Director

Summit County Department of Sanitary Sewer Services

1180 South Main Street, Suite 201

Akron OH 44301

Phone: (330) 926-2400

Fax: (330) 926-2471

Approved by the NEFCO General Policy Board

7/20/2022

Portage County

Portage County Water Resources Director/Sanitary Engineer
Portage County Water Resources Department
8116 Infirmery Road
Ravenna, Ohio 44266
Phone: (330) 297-3670
Fax: (330) 297-3680

I. Population Served:

The population projections (in thousands for governmental entities) used in the 201 Plan and those in the NEFCO 208 Clean Water Plan are compared below.

<u>Stow</u>	<u>1990</u>	<u>1995</u>	<u>2000</u>	<u>2005</u>	<u>2010</u>	<u>2015</u>	<u>2020</u>	<u>2025</u>
201	32.5	34.0	35.0	----	----	----	----	----
Approved 208	32.5	35.6	38.0	----	----	----	----	----
<u>Tallmadge</u>								
201	21.0	22.3	24.0	----	----	----	----	----
Approved 208	18.3	19.5	20.5	----	----	----	----	----
<u>Brimfield</u>								
201	13.5	14.6	15.8	----	----	----	----	----
Approved 208	9.5	11.2	12.4	----	----	----	----	----
<u>Franklin</u>								
201	11.0	13.1	15.3	----	----	----	----	----
Approved 208	7.9	8.9	9.8	----	----	----	----	----

The above population projections (Approved 208) were prepared in 1990. Updated projections are scheduled to be prepared after county population projections are produced by the Ohio Department of Development Office of Strategic Research.

II. Wastewater Treatment Planning Prescriptions and Wastewater Planning Options

Original source information provided by the Summit County Department of Sanitary Sewer Services, May 1, 2000 and Portage County Water Resources (Portage County Regional Sewer District), June 30, 2000.

Summit County Department of Sanitary Sewer Services Jurisdiction:

Areas Currently Served with Sanitary Sewers (yellow):

These areas are currently served with sanitary sewers that have been constructed and are currently in operation. However, there are undeveloped tracts of land and vacant lots subject to improvement. All new development and construction in the yellow areas of this facilities planning area will be required to connect and/or provide sanitary service to ensure that wastewater will be treated and discharged at an existing publicly-owned treatment works (POTW). Existing non-single-family private treatment systems which fail to operate properly will be required to connect to and/or provide sanitary service to ensure that wastewater will be treated at an existing POTW. Failing home sewage treatment systems (HSTSs) serving single-family homes shall be abandoned and the home connected to sanitary sewer service in accordance with Ohio Administrative Code (OAC) 3701-29-02(M) unless sewer service is not accessible, in which case the HSTS must be repaired or replaced to meet the standards found within OAC 3701-29.

**Approved by the NEFCO General Policy Board
7/20/2022**

Areas Expected to be Served with Sanitary Sewers within the next 20 Years (orange):

These areas are projected to receive sewers but are not yet sewered. Projected wastewater flow from these areas has been accounted for within the system. All new wastewater generated by residential subdivisions, commercial, industrial, and institutional development will be required to connect to the sanitary sewer system for the removal of sanitary wastewater.

Areas that will be Served by a POTW or by Home Sewage and Semi-Public Sewage Disposal Systems (green):

Stow - Stow is aggressively interested in assuring all parts of the City of Stow are served with sanitary sewers. All new subdivision development, whether residential or non-residential, and all other new non-residential, and new multi-family residential development, will be required to connect to and/or provide sanitary service to ensure that wastewater will be treated at an existing POTW. Vacant lots within existing HSTS-served subdivisions and remote metes-and-bounds residentially-zoned parcels may be so improved with new HSTSs provided the local health department finds that the soils are suitable to assure there will be no off-lot discharge of effluent and there is no conflict with OAC 3701-29-02. Existing non-single-family private treatment systems which fail to operate properly will be required to connect and/or provide sanitary service to ensure that wastewater will be treated at an existing POTW. Failing home sewage treatment systems (HSTSs) serving single-family homes shall be abandoned and the home connected to sanitary sewer service in accordance with Ohio Administrative Code (OAC) 3701-29-02(M) unless sewer service is not accessible, in which case the HSTS must be repaired or replaced to meet the standards found within OAC 3701-29.

Hudson - These are rural areas with large undeveloped tracts of land and vacant lots subject to improvement. All new subdivision development, whether residential or non-residential, and all other new non-residential, and new multi-family residential development, will be required to connect and/or provide sanitary service to ensure that wastewater will be treated at an existing POTW. Vacant lots within existing HSTS-served subdivisions and remote metes-and-bounds residentially-zoned parcels may be so improved with new HSTSs provided the local health department finds that soils are suitable to assure there will be no off-lot discharge of effluent. Existing non-single-family private treatment systems which fail to operate properly will be required to connect and/or provide sanitary service to ensure that wastewater will be treated at an existing POTW. Exceptions may be (granted/requested) based on sewer availability, soil conditions, extent of failure, and cost of repair. Failing home sewage treatment systems (HSTSs) serving single-family homes shall be abandoned and the home connected to sanitary sewer service in accordance with Ohio Administrative Code (OAC) 3701-29-02(M) unless sewer service is not accessible, in which case the HSTS must be repaired or replaced to meet the standards found within OAC 3701-29.

Portage County Water Resources Department (Portage County Regional Sewer District)
Jurisdiction:

Areas Currently Served with Sanitary Sewers (yellow):

Brimfield, Suffield, Rootstown, and Franklin Township - These areas are currently served with sanitary sewers that have been constructed and are currently in operation. However, there may be undevelopable tracts of land and vacant lots subject to improvement. All new development and construction in the yellow areas of this facility planning area will be required to connect and/or provide sanitary service to ensure that wastewater will be treated at an existing publicly-owned treatment works (POTW) with modifications or expansions as required to handle the flow. Existing non-residential private treatment systems (semi-public), which cease to operate properly, shall be abandoned and connection made to the existing sanitary sewer system. Failing HSTSs serving single family homes shall be abandoned in accordance with Ohio Administrative Code 3701-29-02.

Areas that will be Served by a POTW or by Home Sewage and Semi-Public Sewage Disposal Systems (green):

Brimfield, Suffield, Rootstown, and Franklin Township - Future development will be served by an existing POTW modified or expanded as required to handle the flow or a non-discharging sewage disposal system. Non-discharging systems including on-site septic systems and systems in which the effluent is applied to the land are locally permitted at this time. New discharging systems are only permitted for repair of existing systems in cases where both central sewer and non-discharging systems are not available.