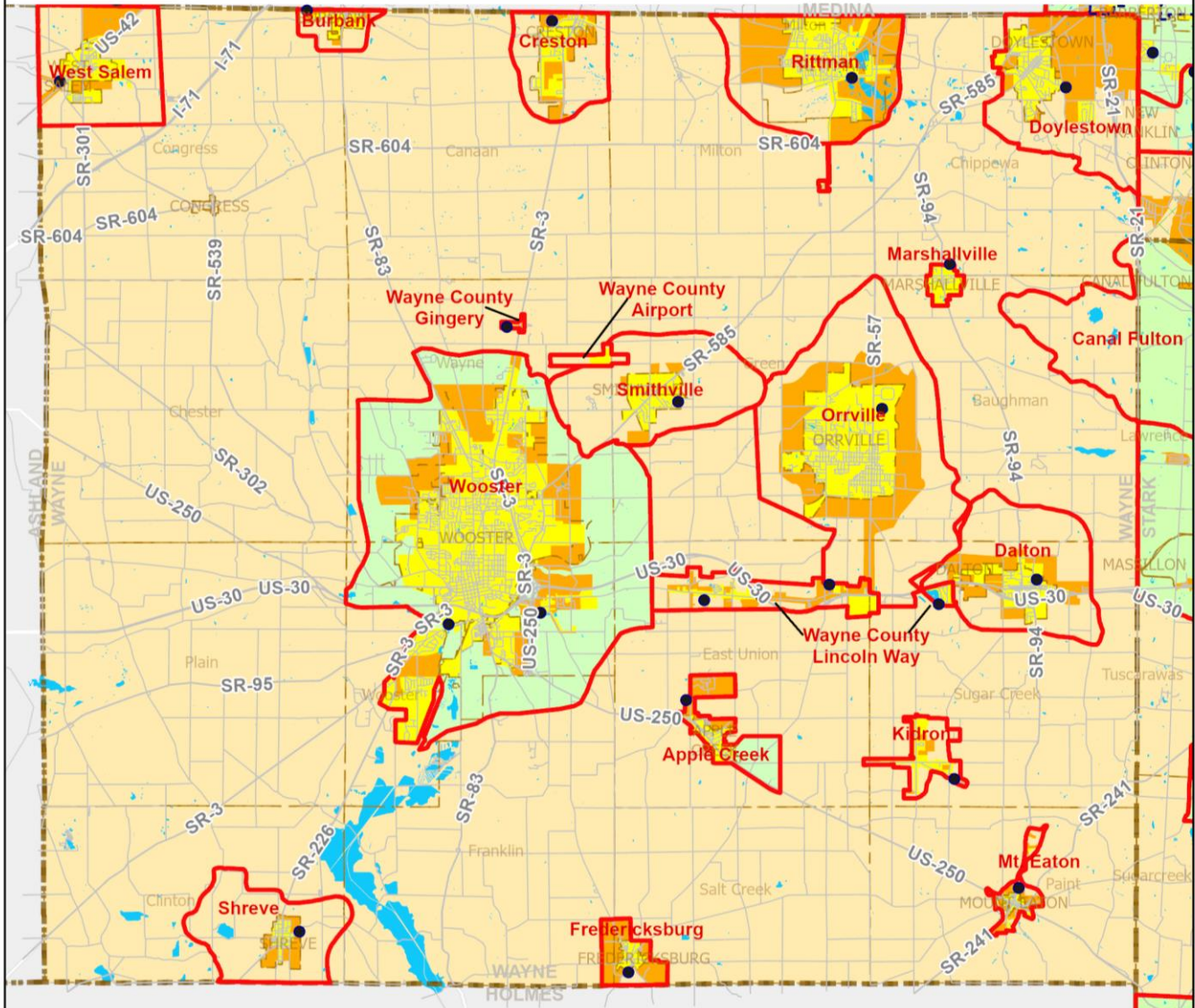


Appendix 3-36

Wayne County Facilities Planning Areas (FPA)

Wayne County Facilities Planning Areas

208 Clean Water Plan



- Areas Currently Served with Sanitary Sewer
- Areas Expected to be Served with Sanitary Sewers within the next 20 Years
- Areas that will be Served by Home Sewage and Semi-Public Sewage Disposal Systems
- Areas that will be Served by a POTW or by Home Sewage and Semi-Public Sewage Disposal Systems
- Areas Without a Wastewater Treatment Planning Prescription
- Lakes and Ponds

- Name** FPA Boundary
- Name Municipal/Township Boundary
- County Boundary
- Numbered Route
- Other Road
- Publicly Owned Wastewater Treatment Works (POTW)



* Please see Clean Water Plan text for a complete explanation of the mapping categories.
 * Please see the FPA Reference Map (Appendix 3-1) for names of adjacent FPAs.

Northwest Ohio Four County Regional Planning and Development Organization, 2022
 Sources: Wayne County GIS; Stark Co. GIS; Summit Co. GIS; Ohio EPA; National Hydrologic Database; AMATS; NEFCO; ESRI base map.

Approved by the NEFCO General Policy Board
3-36-2 **5/18/2022**