

**Little Cuyahoga River  
Balanced Growth Plan Meeting**

Friday, February 15, 2013  
10:30 a.m.

Goodyear Branch Library  
60 Goodyear Boulevard  
Akron, OH 44305

**Agenda**

- I. Welcome and Introductions**
  - Meeting Goals
  
- II. Ohio's Balanced Growth Program**
  - Sandra Kosek-Sills, Ohio Lake Erie Commission
  - Overview of the Program
  - Community Benefits of Participating
  
- III. Summary of Work Completed**
  - Previous Planning Efforts
  - Mapping
  - Water Quality Monitoring
  
- IV. Community Conservation & Development Priorities**
  - Cuyahoga River Community Planning Organization (CRCPO)  
Methodology
  - Community Survey
  - Survey Distribution
  - Used to Help Determine Priority Conservation Areas (PCAs) and Priority  
Development/Redevelopment Areas (PDAs)
  
- V. Watershed Updates**
  - Akron's Combined Sewer Overflow Long Term Control Plan
  - U.S. Army Corps of Engineering Report and Assessment
  - Watershed Updates from Members
  
- VI. Next Meeting**

**Little Cuyahoga River  
Balanced Growth Plan Meeting**  
Friday, February 15, 2013

Goodyear Branch Library  
60 Goodyear Boulevard  
Akron, OH 44305

**Meeting Summary**

**I. Welcome and Introductions – Eric Akin, NEFCO**

- The meeting began with an overview of the Little Cuyahoga River Watershed.
- The Little Cuyahoga River is 17.4 miles in length and drains 61.7 mi<sup>2</sup> of Portage and Summit Counties.
- The watershed includes four HUC 12 watersheds, two cities, two villages, and four townships.
- The basin also includes Springfield Lake, Wingfoot Lake, Mogadore Reservoir.
- Introduction of the meeting attendees followed.

**II. Ohio's Balanced Growth Program – Sandra Kosek-Sills, Ohio Lake Erie Commission**

- Ms. Kosek-Sills gave a presentation on the Ohio Balanced Growth Program.
- The program links land use and water resources.
- It was designed to improve environmental, recreational, and economic resources within the Lake Erie Basin. It has since been adopted state-wide.
- Balanced growth watershed planning is voluntary, locally led, and incentive-based. It is supported by the state through alignment of policies and program with balanced growth plans.
- Balanced growth is a geographic information system (GIS) based process that requires local government buy-in.
- Significant local support is needed for state endorsement. Support from 75 percent of the population, land area, and watershed communities are needed.
- The Plan identifies priority conservation areas, priority development/redevelopment areas, and can include priority agricultural areas.
- Ms. Kosek-Sills provided examples of these different types of priority areas.
- The general plan development process consists of creating maps showing these priority areas. Typically the maps are developed with assistance from a technical committee with oversight from a steering committee consisting of members from the various watershed communities.
- Examples of the maps created by other balanced growth planning efforts in Ohio were shown.
- The special incentives available to communities that support a balanced growth plan were discussed. The special incentives range from technical assistance from state agencies to extra points on funding applications to percentage points discounts on certain loan programs.
- The incentives are for both economic development and water resource protection/restoration.

- The Ohio Balanced Growth Program also has information for local communities on best local land use practices.
- More information on the Balanced Growth Program can be found at [www.balancedgrowth.ohio.gov](http://www.balancedgrowth.ohio.gov).

### **III. Summary of Work Completed – Eric Akin, NEFCO**

#### Previous Planning Efforts:

- NEFCO previously completed a Phase I Preliminary Assessment Report for the Little Cuyahoga River to determine the need and acceptance of a watershed planning effort.
- The report included preliminary mapping of the watershed including jurisdictions, 2005 land use, impervious area, and aerial photos.
- The conclusion was that time was right for a watershed planning effort.
- In 2012 NEFCO held a public meeting to discuss watershed planning options. There are two state-endorsed watershed planning methods in Ohio: Watershed Action Plans and Balanced Growth Plans.
- At the 2012 meeting it was agreed that NEFCO should initiate a Balanced Growth Plan for the Little Cuyahoga River Watershed. The two primary reasons for selecting the planning approach was funding and consistency with the Cuyahoga River Community Planning Organization's (CRCPO) previous watershed planning efforts. Watershed Action Plans are significantly more costly due to the time needed to acquire, process, and utilize the required data to develop water quality improvement actions. Without a dedicated funding source like a watershed coordinator grant, NEFCO did not have the resources available to complete a watershed action plan in a reasonable timeframe. Second, the CRCPO has already completed Balanced Growth Plans in other Cuyahoga River tributaries in Summit, Medina, and Cuyahoga Counties. This will benefit NEFCO by utilizing the CRCPO as a resource in the development of the Little Cuyahoga River plan.

#### Balanced Growth Mapping:

- NEFCO has been working on creating maps to assist the watershed communities in determining priority conservation and (re)development areas.
- NEFCO has already completed 17 draft watershed maps for use by communities. These maps can be found at: [http://www.nefcoplanning.org/little\\_cuy.html](http://www.nefcoplanning.org/little_cuy.html).
- Maps will be posted on this webpage as they are created and/or updated for the Balanced Growth Plan.

#### Water Quality Monitoring:

- NEFCO has been working with the Sierra Club – Portage Trail Group to establish a volunteer monitoring program in the Little Cuyahoga River.
- The Sierra Club has a state-wide initiative to increase volunteer monitoring of local water resources.
- Sierra Club volunteer sample 36 sites in the Little Cuyahoga River quarterly.
- The volunteers collect or document various chemical and physical features of the River, including temperature, total dissolved solids, conductivity, pH, phosphate, and nitrate.
- The Sierra Club is working with Ohio EPA to get their program approved by Ohio EPA as a credible data program.

- The information will be mapped and presented to the communities as another tool in determining areas for conservation and (re)development.

#### **IV. Community Conservation & Development Priorities**

- The Balanced Growth Plan is locally driven, so the watershed communities determine what conservation and (re)development priorities are.
- To assist the communities, NEFCO is developing a community survey aimed at helping determine these priority areas.
- NEFCO is following the methods used by the Cuyahoga River Community Planning Organization (CRCPO) in creating Balanced Growth Plans for other Cuyahoga River tributaries.
- The development of the survey will be the focus of the next Little Cuyahoga River meeting.

#### **V. Watershed Updates**

##### Akron's Combined Sewer Overflow Long-Term Control Plan:

- Akron's plan is still being reviewed by the Federal Judge presiding over the case.
- The plan calls for zero untreated overflows during a typical year precipitation.
- The projects include two underground storage tunnels, several above ground storage basins, and the separation of sanitary sewers from storm sewer in select locations.
- The current cost is over \$800 million to be paid by rate payers to the system in Akron and surrounding communities.
- It is not known when the Judge will rule on the proposed agreement.

##### Little Cuyahoga Aquatic Ecosystem Restoration Project:

- U.S. Army Corps of Engineers and URS is conducting an ecosystem restoration feasibility study which will address restoring an eight-mile section of degraded riverside habitat along the Little Cuyahoga River.
- The City of Akron is the project sponsor.
- The focus area is from river miles 8 to 2 along the Little Cuyahoga River in Akron.
- The funding is from the Army Corps of Engineers and the Great Lakes Restoration Initiative (GLRI).
- The feasibility study will be completed in 2013.

##### Other Watershed Updates:

- The City of Akron is in the process of lowering the dam at Kelly Avenue by the Goodyear Headquarters.
- This is the second phase of Akron's Little Cuyahoga River Restoration project.
- The lowering of the dam will reduce stagnate water and improve sediment transport along the River.
- The project will also create functional floodplains.

#### **VI. Next Meeting**

The next meeting will be in March. Date, time and location to be determined.

# Little Cuyahoga River



Little Cuyahoga River – Balanced Growth Meeting  
Friday, February 15, 2013

# Little Cuyahoga River Watershed Plan – Phase I Preliminary Report

- Completed October 2010
- [www.nefcoplanning.org](http://www.nefcoplanning.org)
- Information Included:
  - Watershed Mapping
  - Land Use
  - Impervious Area
  - Aerial Photos
  - Public Meeting

# Watershed Characteristics

- Little Cuyahoga River is 17.4 Miles Long
- Drains 61.7 mi<sup>2</sup>
- Springfield Lake, Wingfoot Lake, and Mogadore Reservoir.
- Primary Tributaries:
  - Ohio Canal\*
  - Camp Brook
  - Springfield Lake Outlet
  - Roosevelt Ditch
  - Union Oil Tributary
  - Wingfoot Lake Outlet

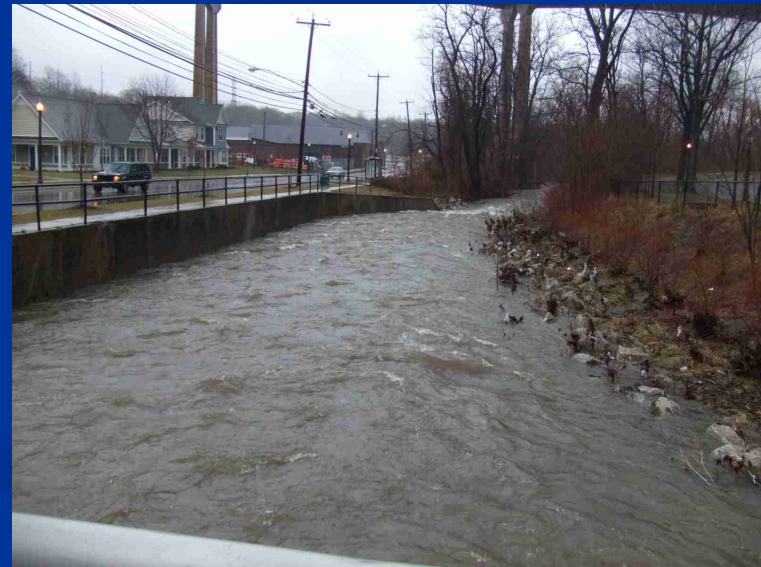
# Watershed Characteristics

- Four HUC 12 Watersheds
- Two Counties
- Two Cities
- Two Villages
- 4 Townships
- “The Little Cuyahoga River subwatershed drains the Akron metropolitan area and is among the most urbanized and densely populated in the state.” – *Ohio EPA, Cuyahoga River TMDL*



# Impervious Analysis

- Watershed is 24% Impervious
  - Mogadore Reservoir = 3.1%
  - Wingfoot Lake to Springfield Lake Outlet = 17.6%
  - Springfield Lake Outlet = 26.8%
  - Springfield Lake Outlet to Mouth = 43.6%



# Little Cuyahoga River Watershed Planning Meeting

- Held in 2012
- Determine Direction of Planning Efforts
- Balanced Growth Plan vs. Watershed Action Plan
- Balanced Growth Selected
- Collect and Map Data to Use in Both Planning Processes

# Water Quality Attainment

- Not In Attainment for Biological and Recreational Use Standards.
- Reasons: CSOs, Habitat Loss, Polluted Runoff, Legacy Pollution, Dams, Dredging, Organic Enrichment
- Signs of Improvement!



# Little Cuyahoga River Watershed Mapping

15 Maps to Be Used to Develop a  
Balanced Growth Plan

**DRAFT**

# The Little Cuyahoga River Watershed Jurisdictions

CUYAHOGA FALLS

KENT

Rootstown Township

TALLMADGE

AKRON

Brimfield Township

MOGADORE



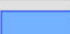
Springfield Township

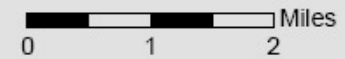
Suffield Township

Randolph Twp.

LAKEMORE

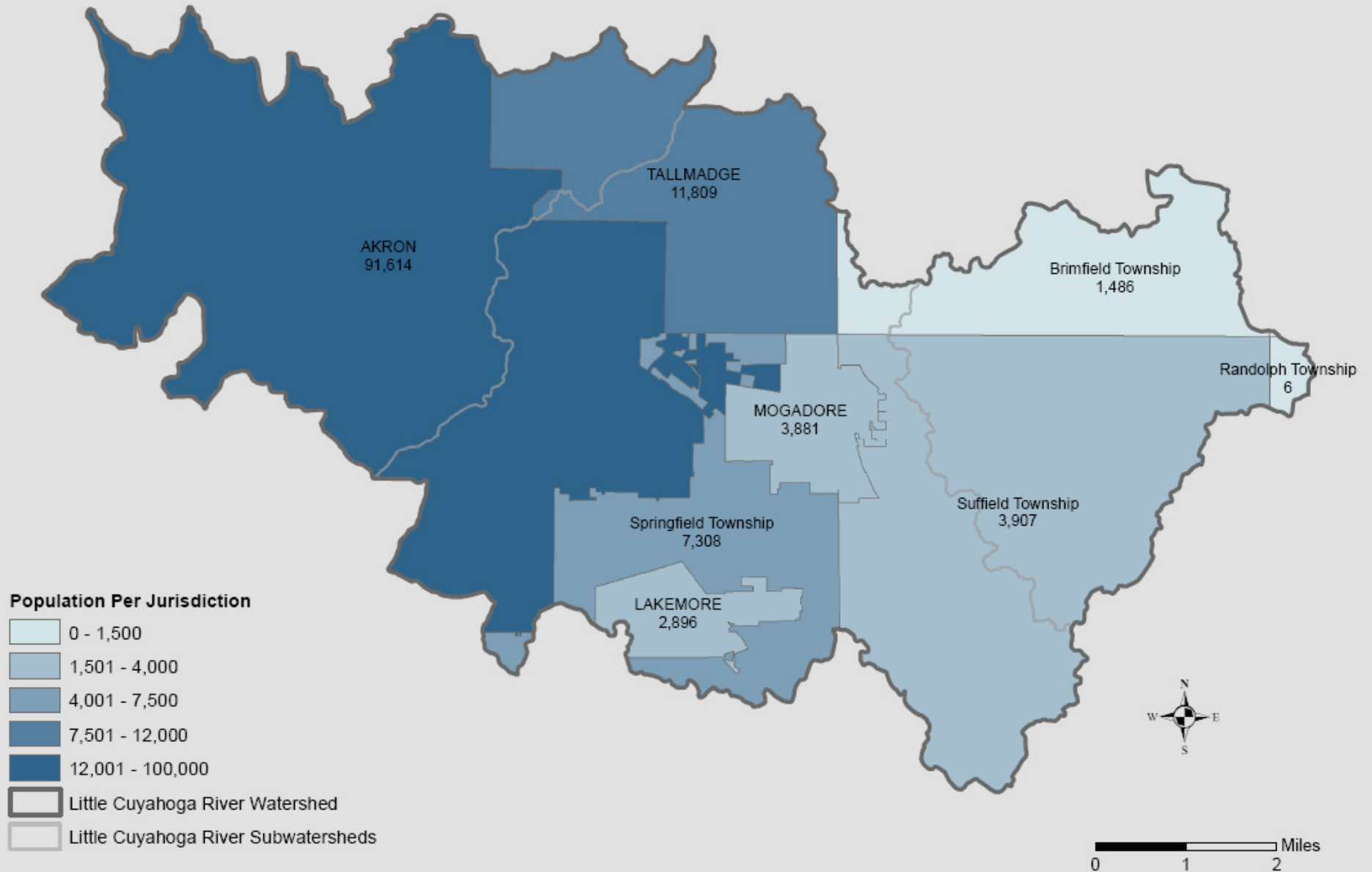
## Watershed Jurisdictions

-  Akron
-  Brimfield Township
-  Lakemore
-  Mogadore
-  Randolph Township
-  Springfield Township
-  Suffield Township
-  Tallmadge
-  Little Cuyahoga River Watershed
-  Lake/Pond
-  Stream/River



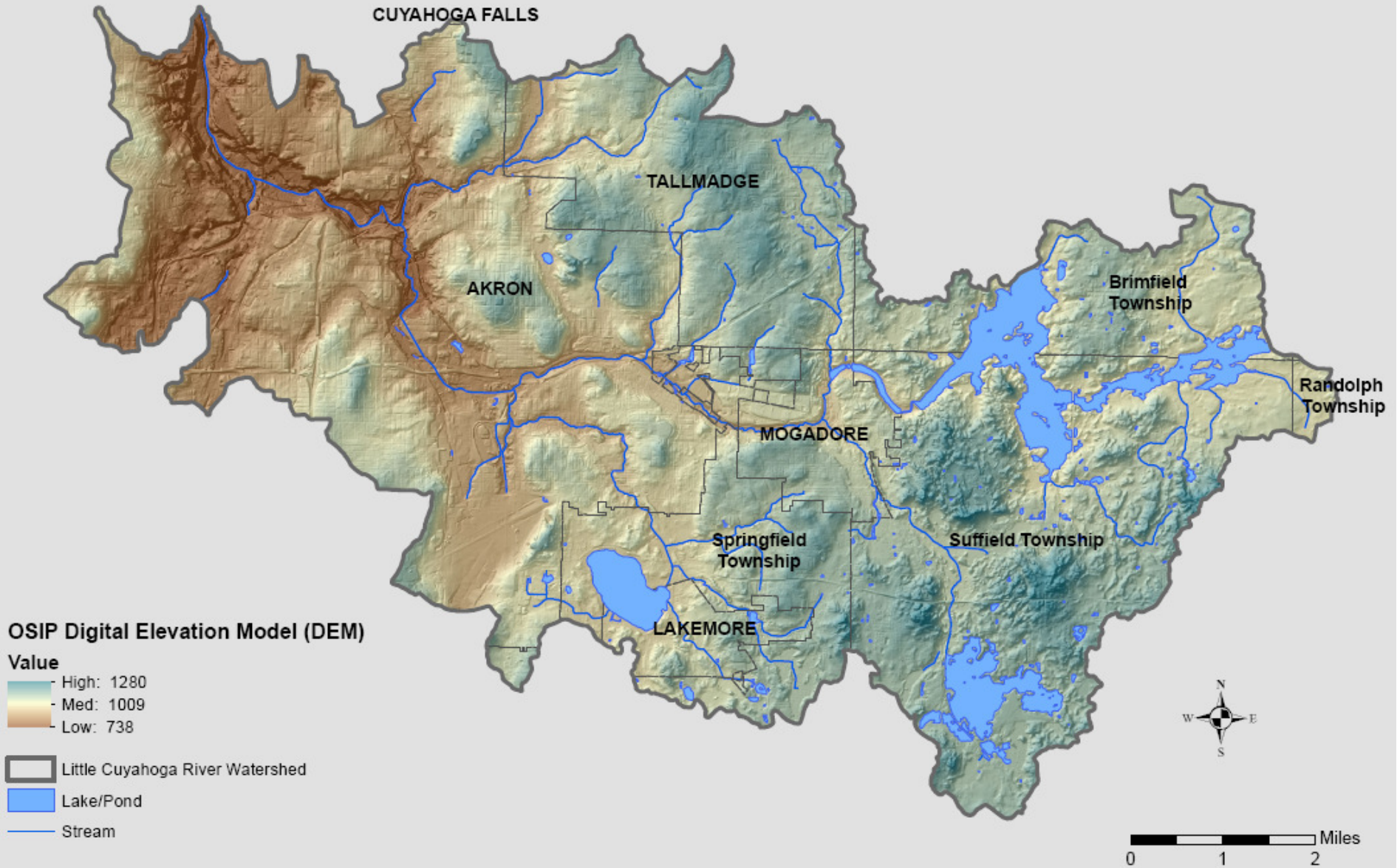
**DRAFT**

# The Little Cuyahoga River Watershed Jurisdiction Population



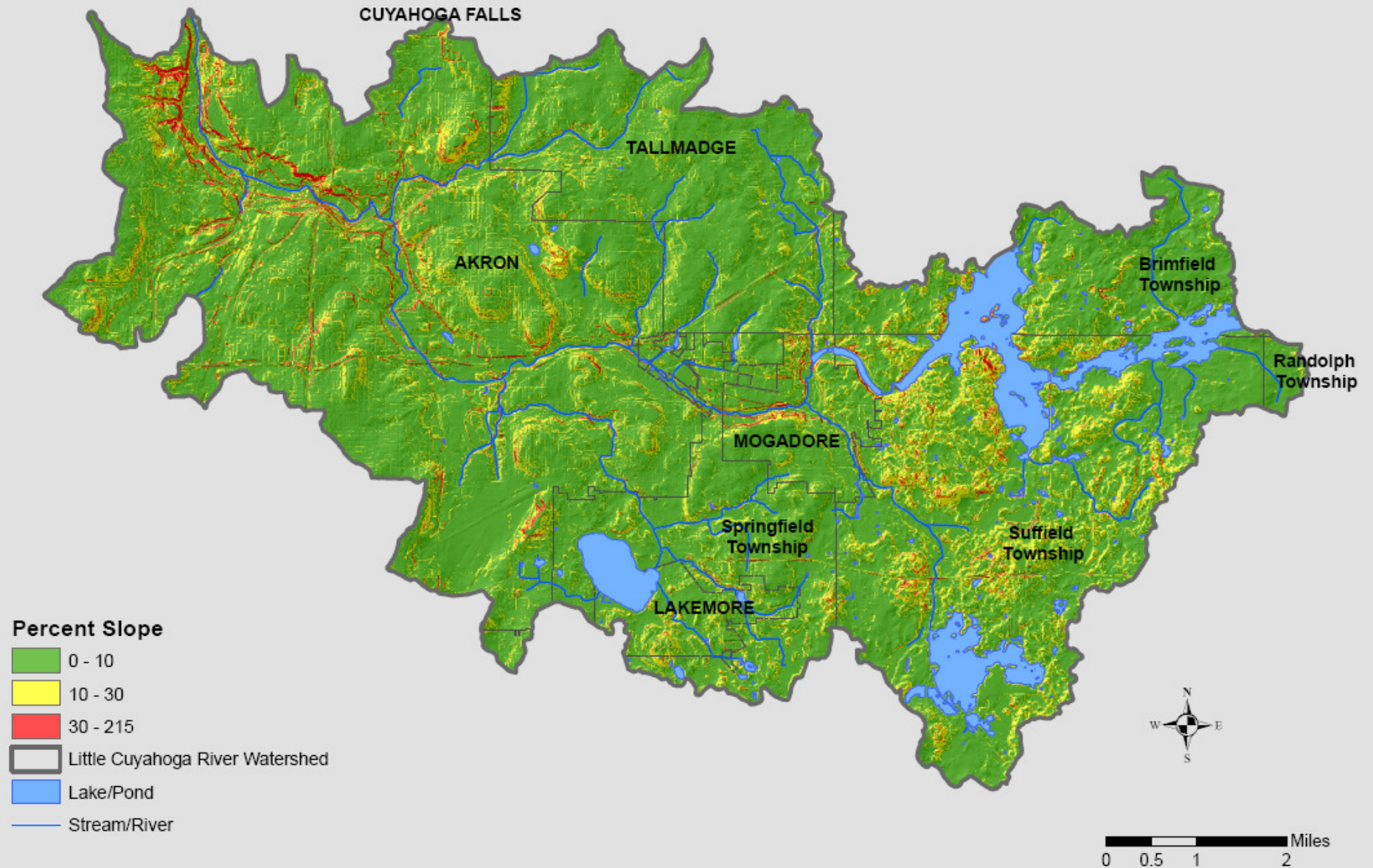
**DRAFT**

# The Little Cuyahoga River Watershed Shaded Relief using Digital Elevation Model (DEM) and Hillshade



**DRAFT**

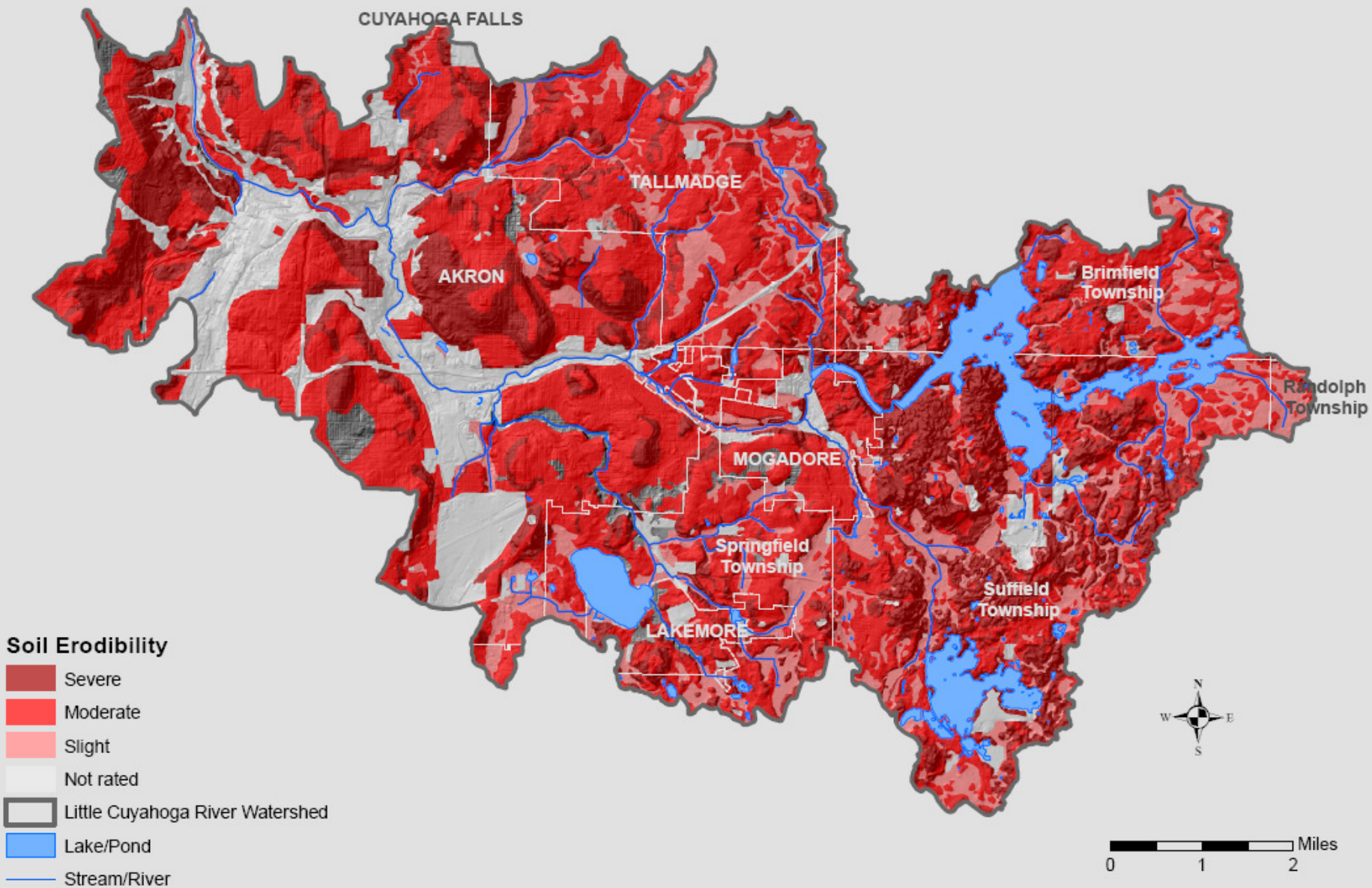
# The Little Cuyahoga River Watershed Percent Slope





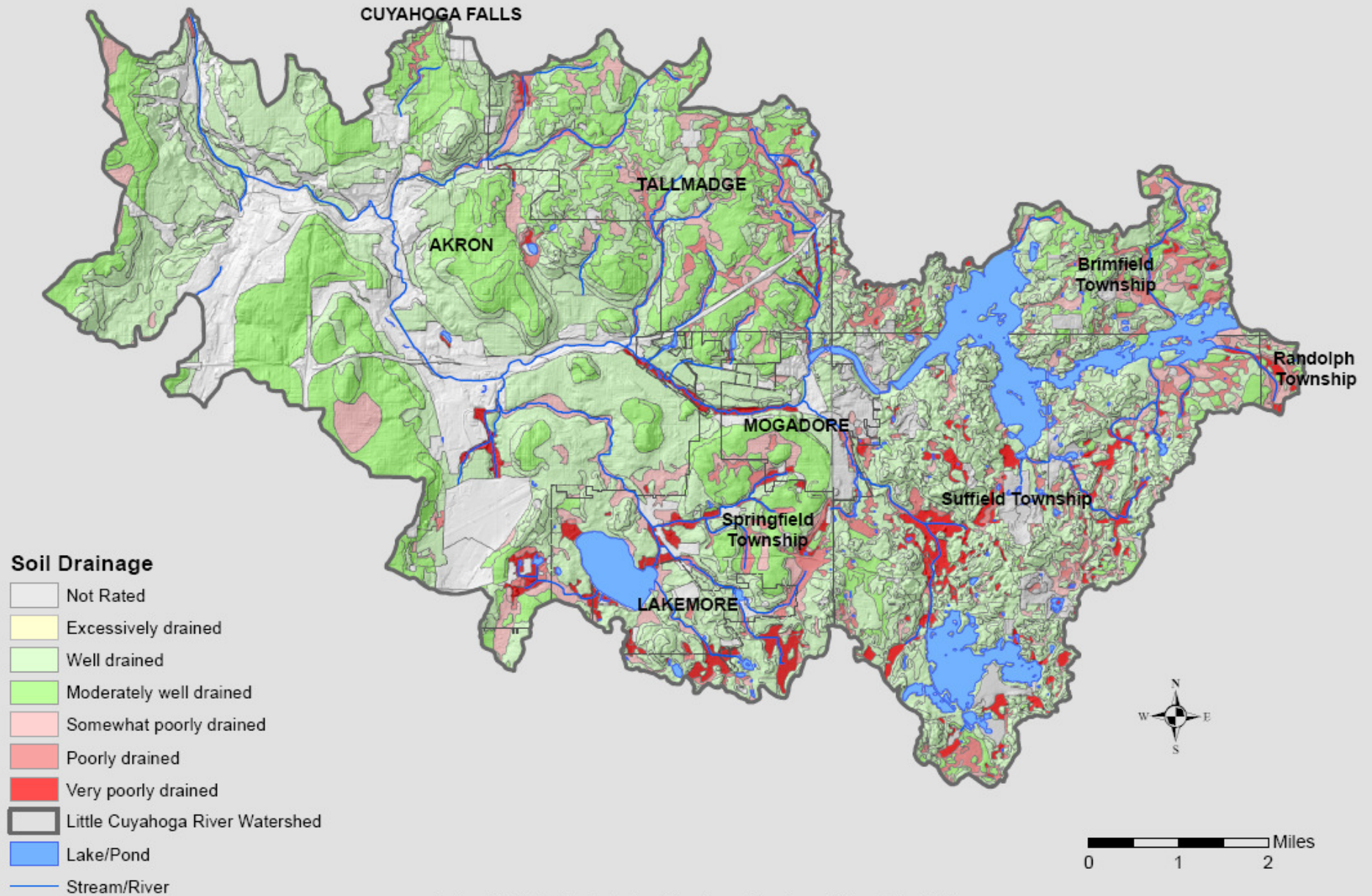
**DRAFT**

# The Little Cuyahoga River Watershed Soil Erodibility



**DRAFT**

# The Little Cuyahoga River Watershed Soil Drainage

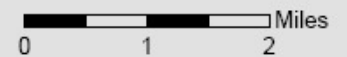
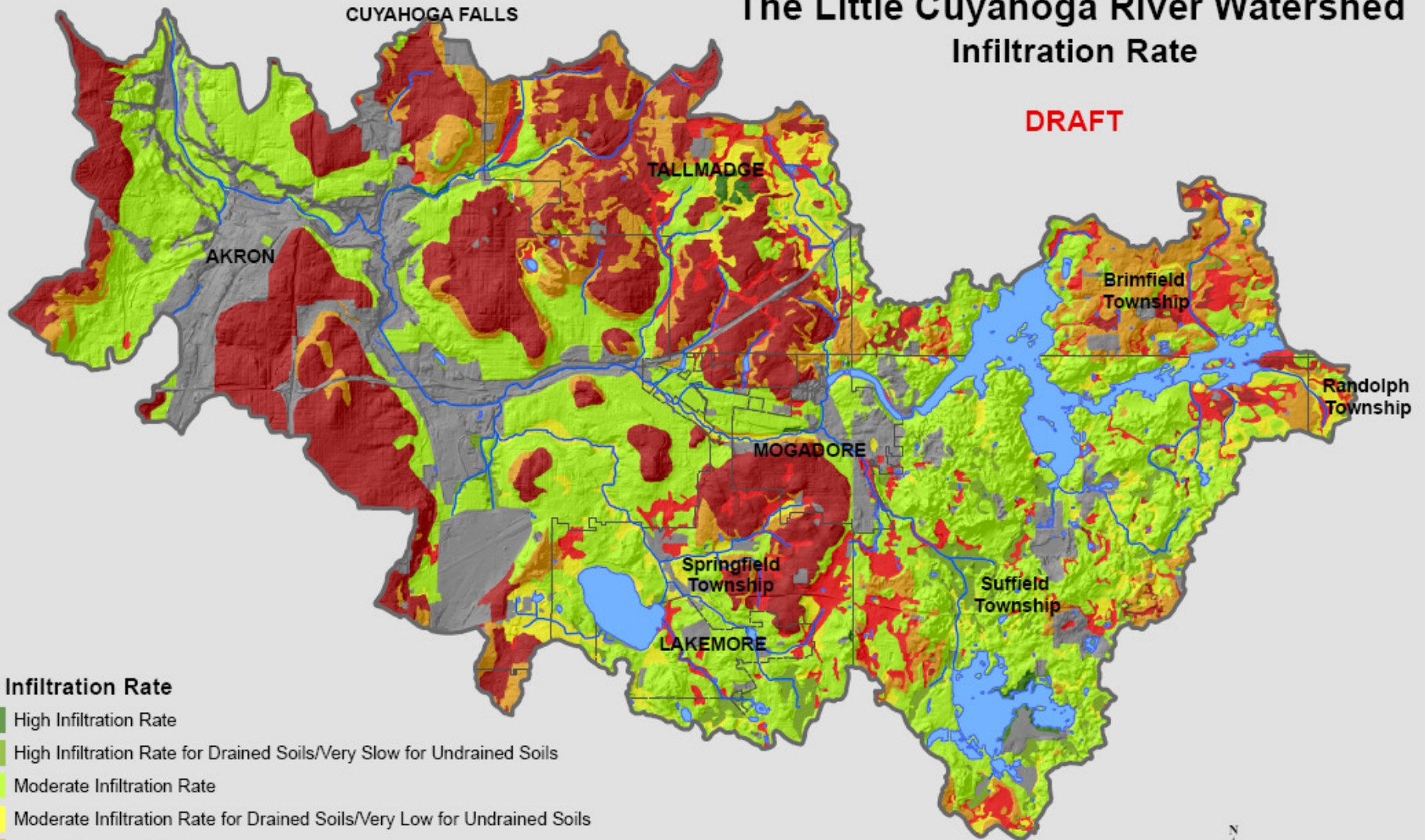


# The Little Cuyahoga River Watershed Infiltration Rate

**DRAFT**

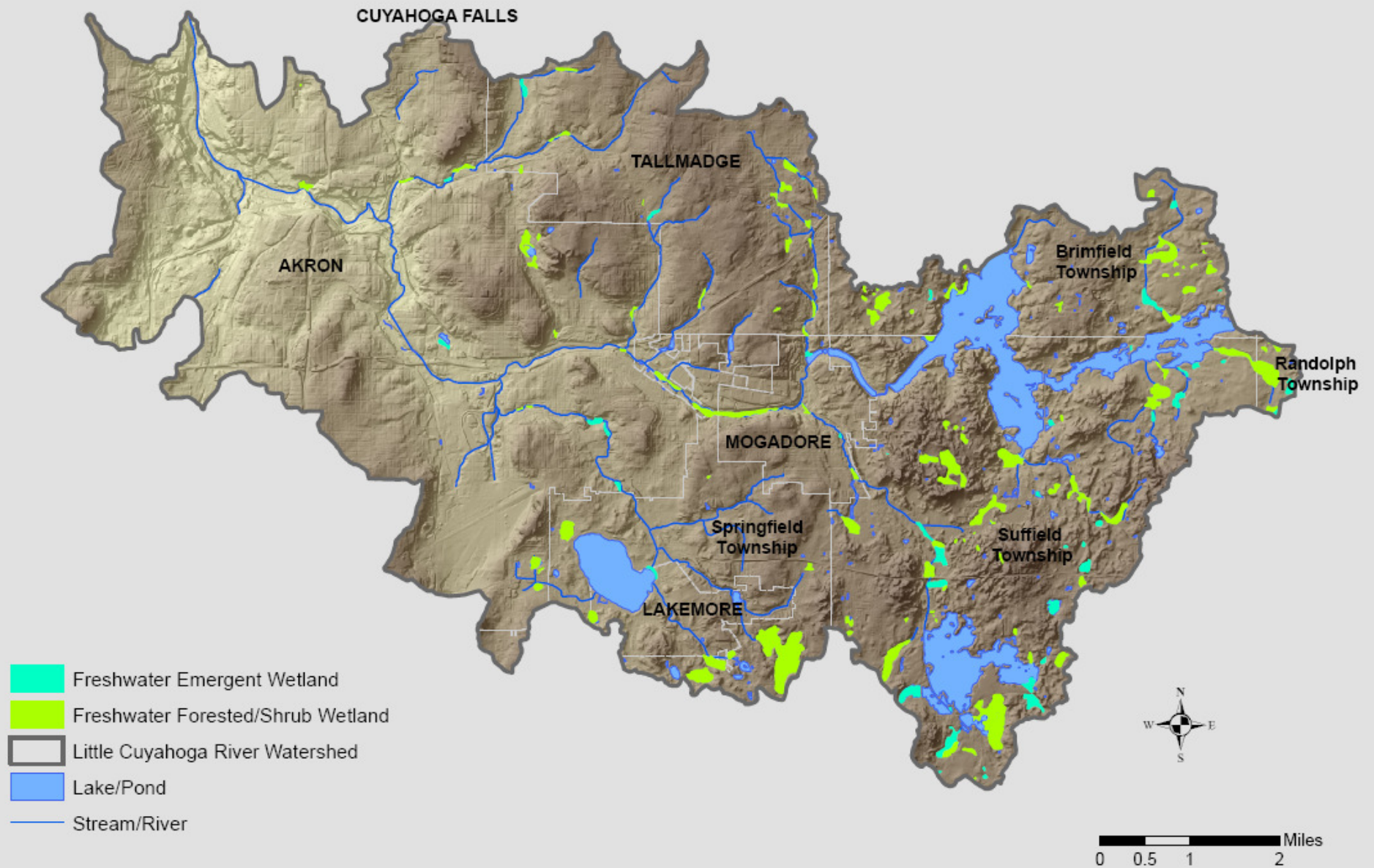
## Soil Infiltration Rate

-  High Infiltration Rate
-  High Infiltration Rate for Drained Soils/Very Slow for Undrained Soils
-  Moderate Infiltration Rate
-  Moderate Infiltration Rate for Drained Soils/Very Low for Undrained Soils
-  Slow Infiltration Rate
-  Slow Infiltration Rate for Drained Soils/Very Slow for Undrained Soils
-  Very Slow Infiltration Rate
-  Not Rated
-  Little Cuyahoga River Watershed
-  Lake/Pond
-  Stream/River



**DRAFT**

# The Little Cuyahoga River Watershed Wetlands



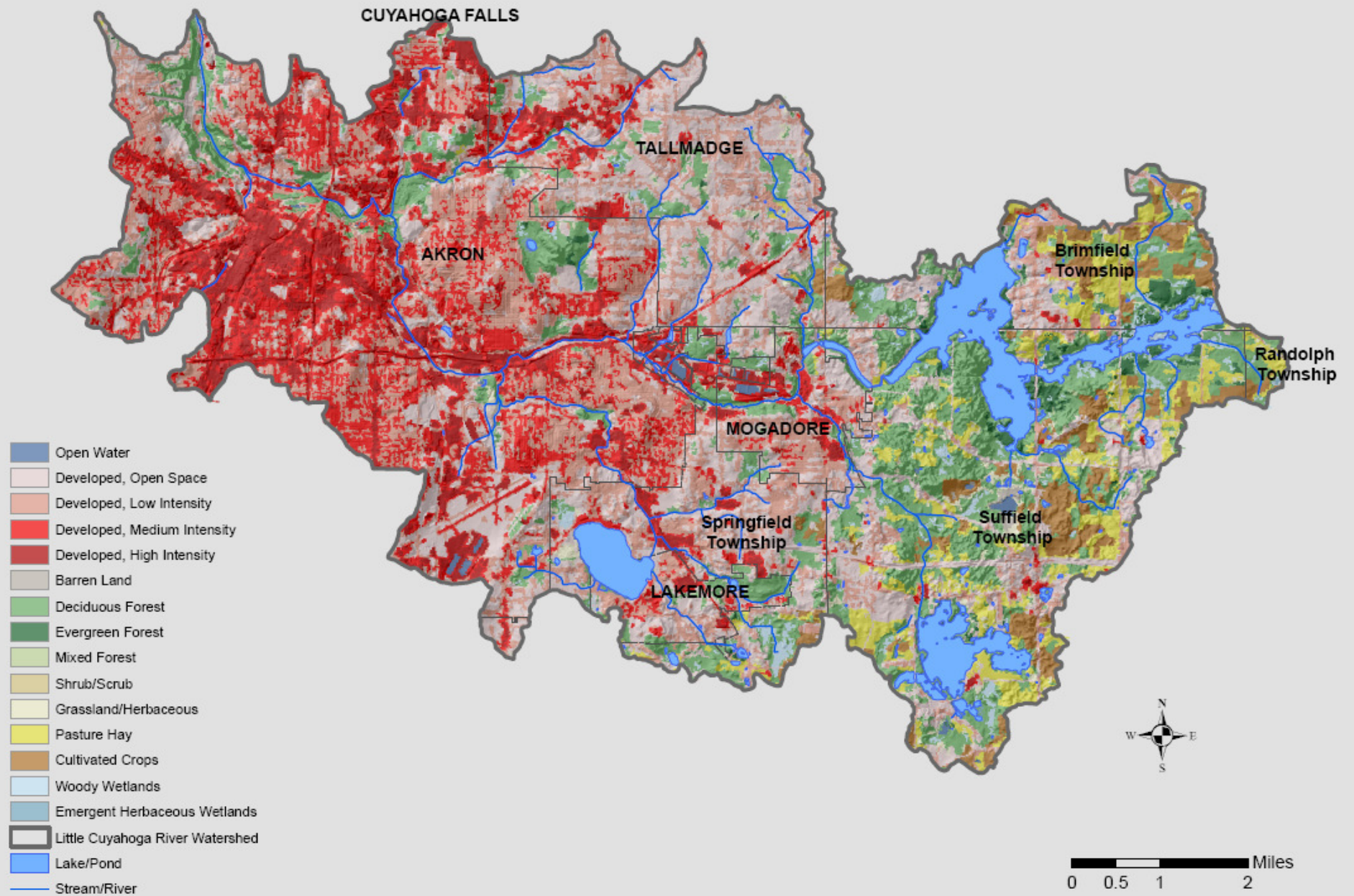
**DRAFT**

# The Little Cuyahoga River Watershed Riparian Setback



**DRAFT**

# The Little Cuyahoga River Watershed Land Cover



**DRAFT**

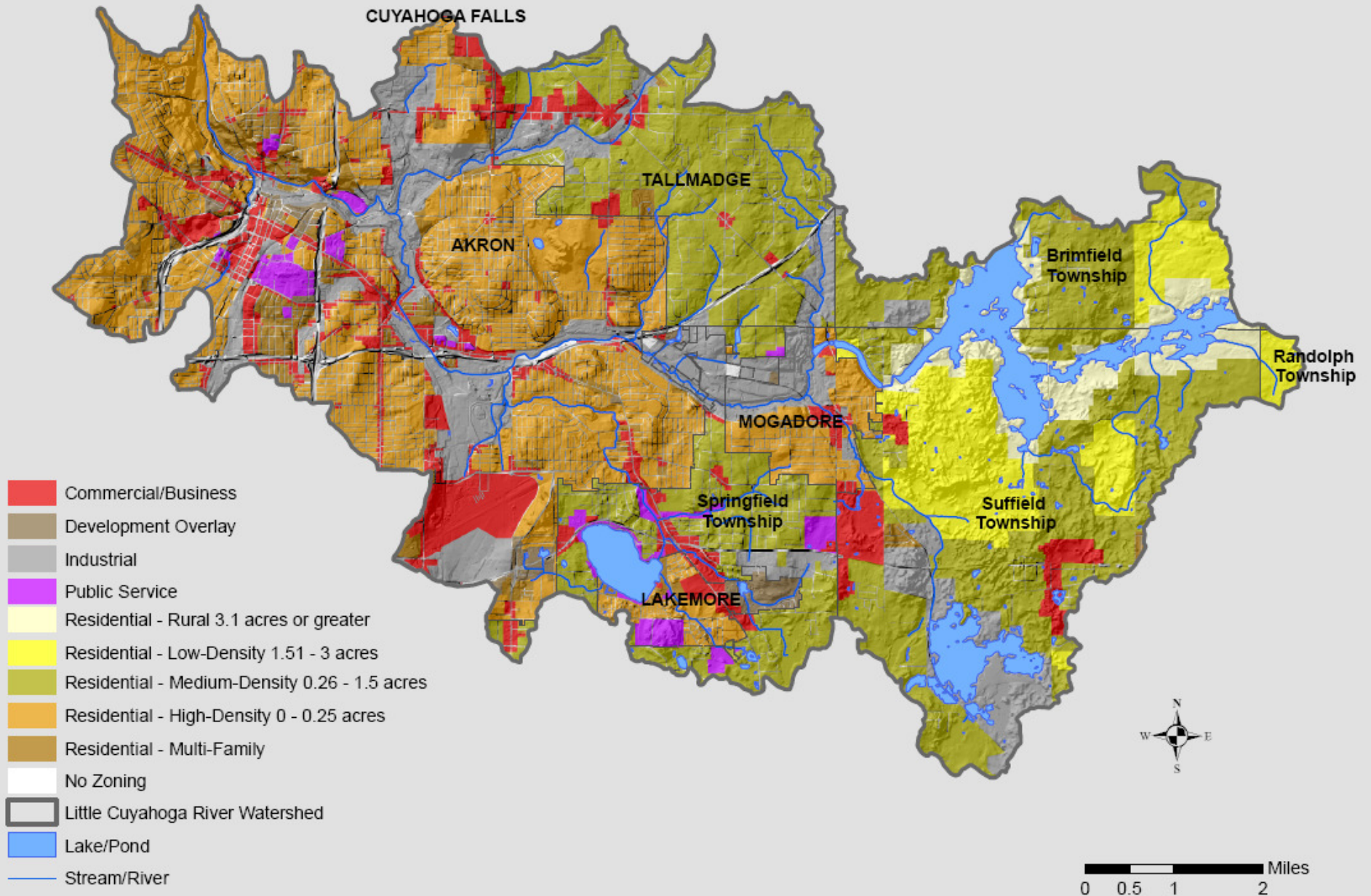
# The Little Cuyahoga River Watershed

## Changes in Land Cover From 2001 - 2006



**DRAFT**

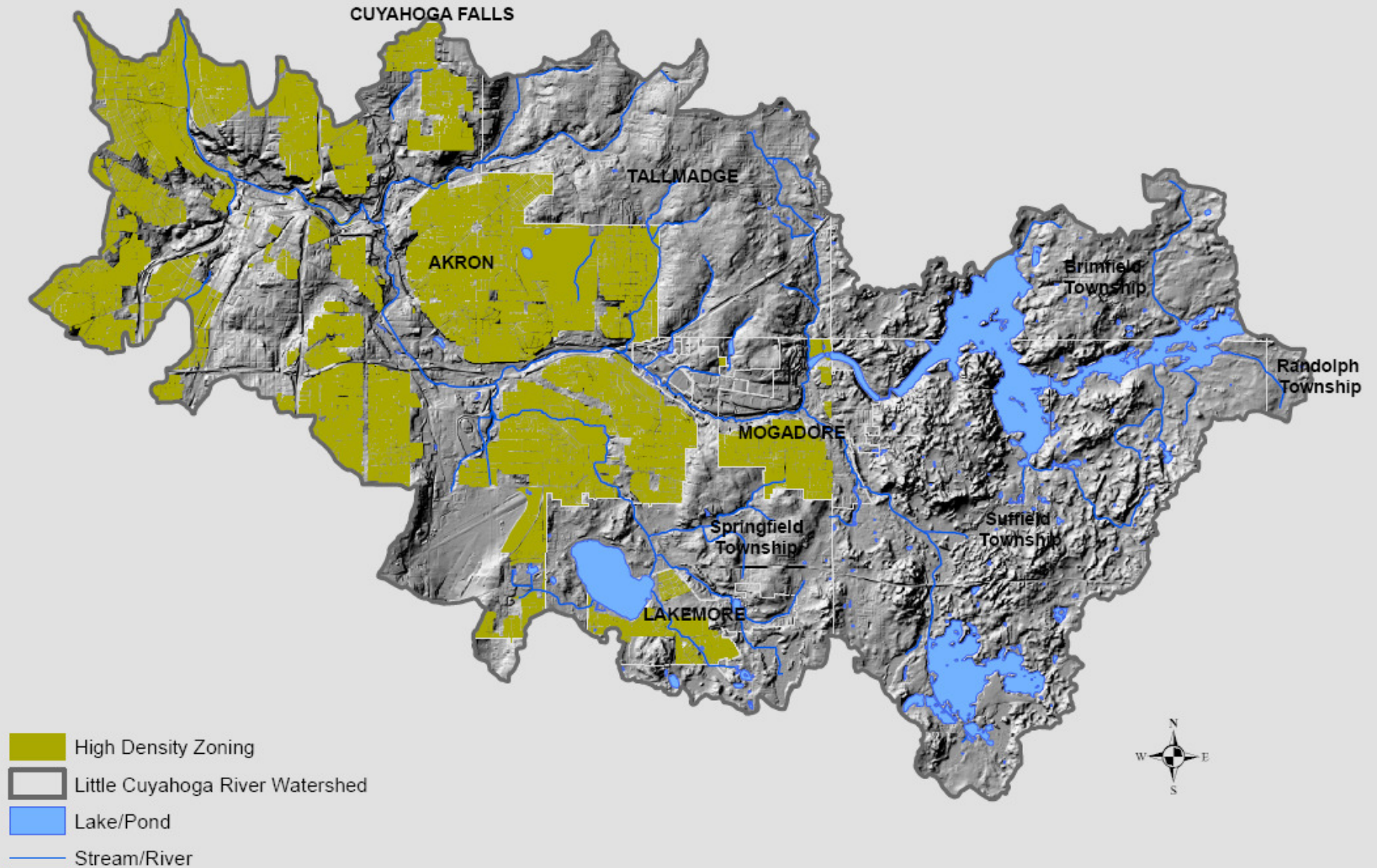
# The Little Cuyahoga River Watershed Zoning





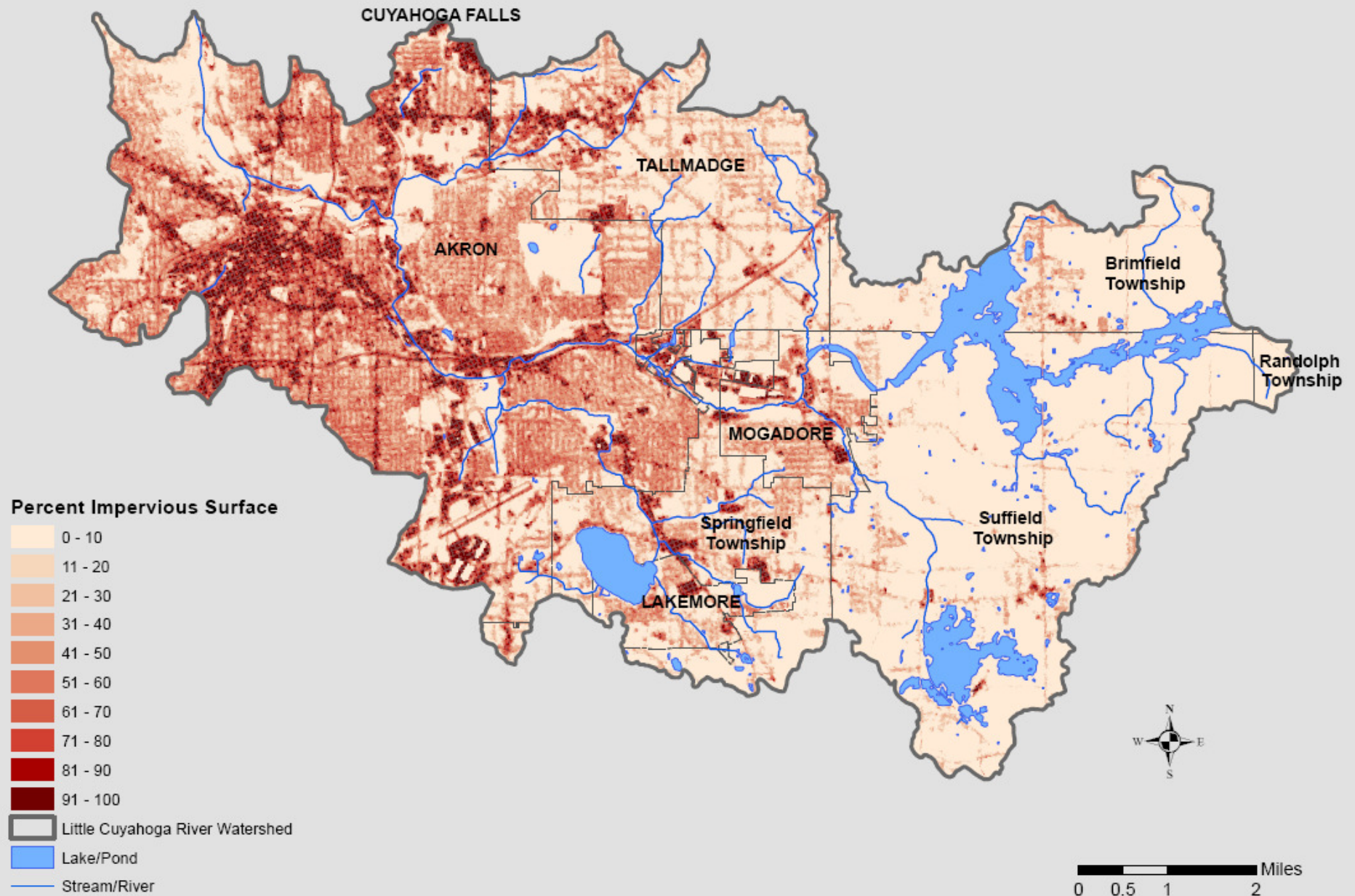
**DRAFT**

# The Little Cuyahoga River Watershed High - Density Zoning



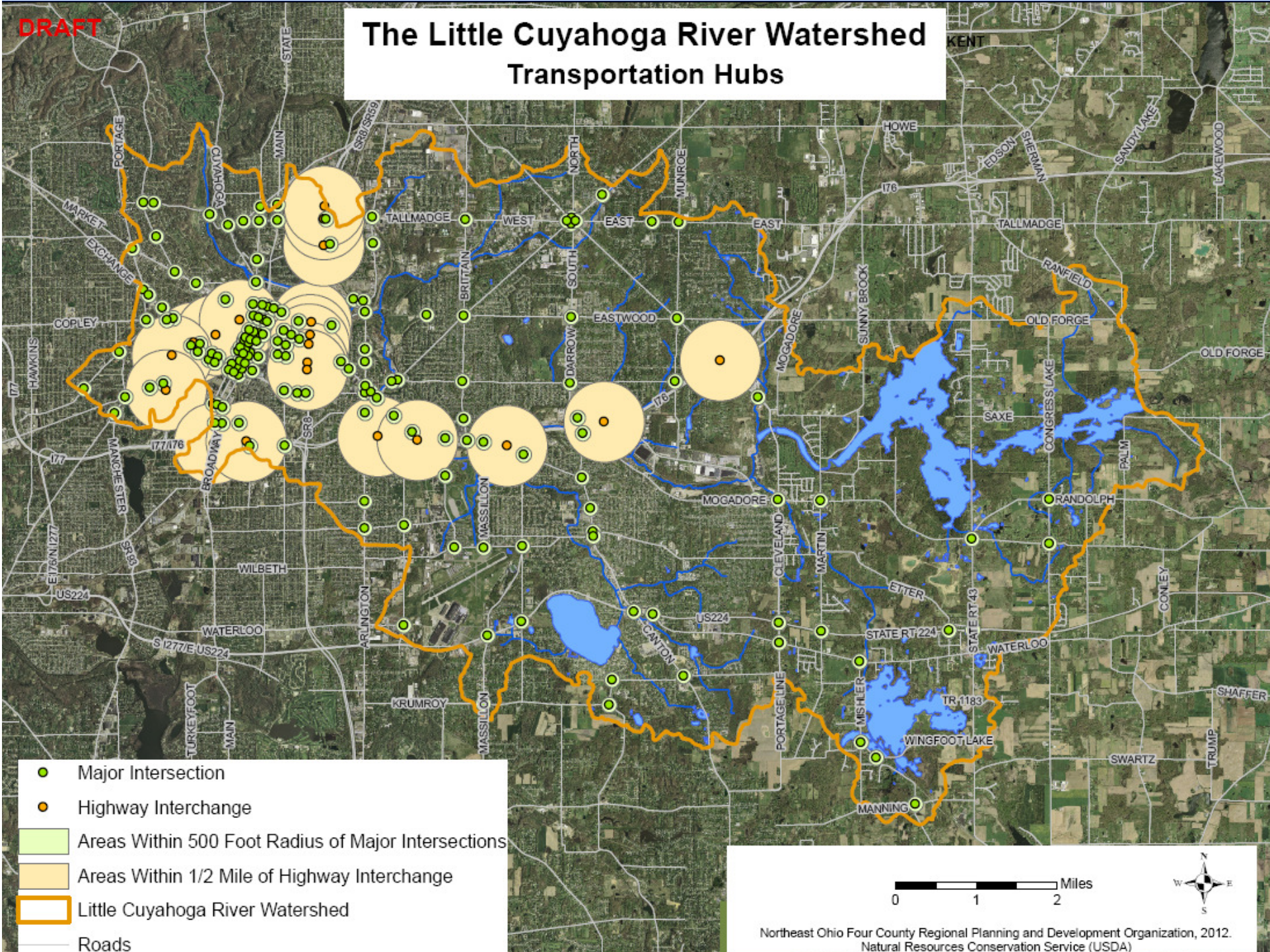
**DRAFT**

# The Little Cuyahoga River Watershed Percent Developed Imperviousness, 2006



DRAFT

# The Little Cuyahoga River Watershed Transportation Hubs

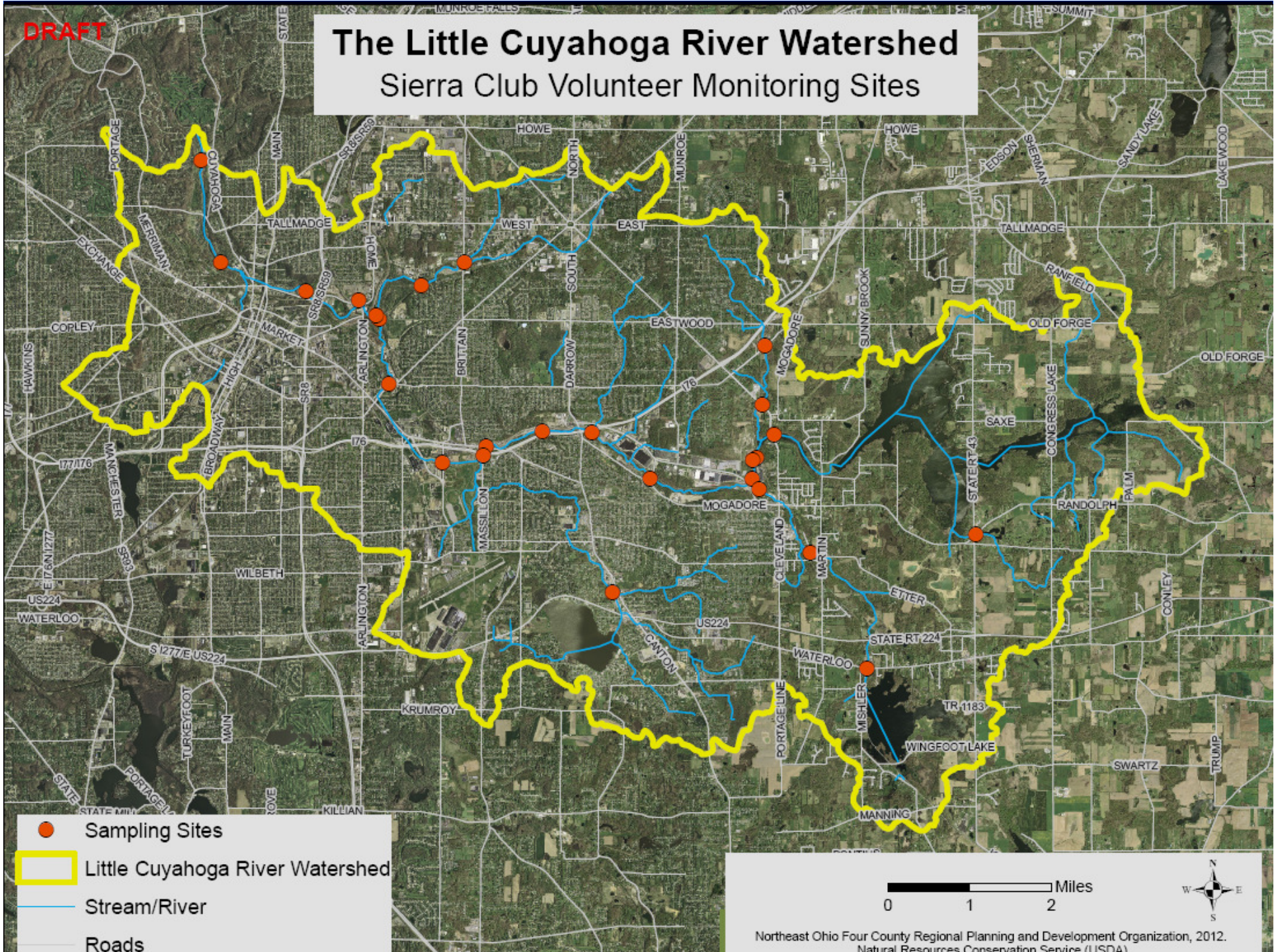


# Volunteer Monitoring

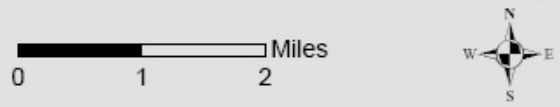
- Sierra Club – Portage Trails Group
- Surface Water Monitoring
- Part of a Statewide Effort
- Equipment Funded by Aveda
- Quarterly Monitoring @ 36 Locations
- Locations Mirror Ohio EPA Sample Locations with Additional Sites Added
- Working with Ohio EPA on Creditable Data Certification

DRAFT

# The Little Cuyahoga River Watershed Sierra Club Volunteer Monitoring Sites



- Sampling Sites
- ▭ Little Cuyahoga River Watershed
- Stream/River
- Roads



Northeast Ohio Four County Regional Planning and Development Organization, 2012.  
Natural Resources Conservation Service (USDA)

# Volunteer Monitoring – Data Collected

- Visual Assessments
- Temperature
- TDS
- Conductivity
- Salinity
- Total Hardness
- Total Chlorine
- Free Chlorine
- Total Alkalinity
- pH
- Nitrate
- Nitrite
- Phosphate
- Observations

➤ Future Meeting Topic

# Balanced Growth Planning

- Voluntary, incentive based strategy
- Goal: Long-term Economic Competitiveness, Ecological Health, and Quality of Life
- Reducing Urban Sprawl
- Protecting Natural Resources
- Encouraging Redevelopment
- Watershed Planning Partnerships
- **FUNDING INCENTIVES** for Endorsed Plans

# Balanced Growth Planning – Priority Conservation Areas (PCAs)

- Locally Designated Areas for Protection and Restoration
- No Change in the Owner's Property Rights
- Property is Still Subject to Local Land-Use Regulations.
- State Policy Decisions would Recognize the Property as a Conservation Area
- State Would NOT Encourage or Provide Funding for Development of the Area



# Balanced Growth Planning – Priority Development Areas (PDAs)

- Locally Designated Areas for Growth and/or Redevelopment
- Maximize Development Potential
- Efficient Use of Infrastructure
- Promote Revitalization of Existing Cities and Towns
- Contribute to the Restoration of Ohio's Waters
- Land May Be Eligible for State Policy and Funding Incentives
- Not Like an Urban Growth Boundary – Development Can Occur Outside of the PDA, But Would NOT Be Encouraged Through State Investments

# Community Survey

- The Watershed Community Determines what is Important in the Watershed
- Survey is to Assist NEFCO in Determining these Priorities
- What Are the Conservation and Development Priorities?
- NEFCO will Map Results for Use in Determining PCAs and PCDs

# Community Survey

- Conservation Priorities?
  - Open Space, Riparian Areas, Wetlands, Stream Bank Erosion, Stream Restoration, Floodplains, Recreation, Storm Water Runoff, Etc.
- Development Priorities?
  - Brownfields, Public Water/Sewer, Population Density, Highway Interchanges, Recreation, Reduced Flood Hazards, Land Availability, Redevelopment, etc.

# Community Survey

## ■ Survey Review

- Reviewed by the Stakeholder Group before distribution

## ■ Distribution

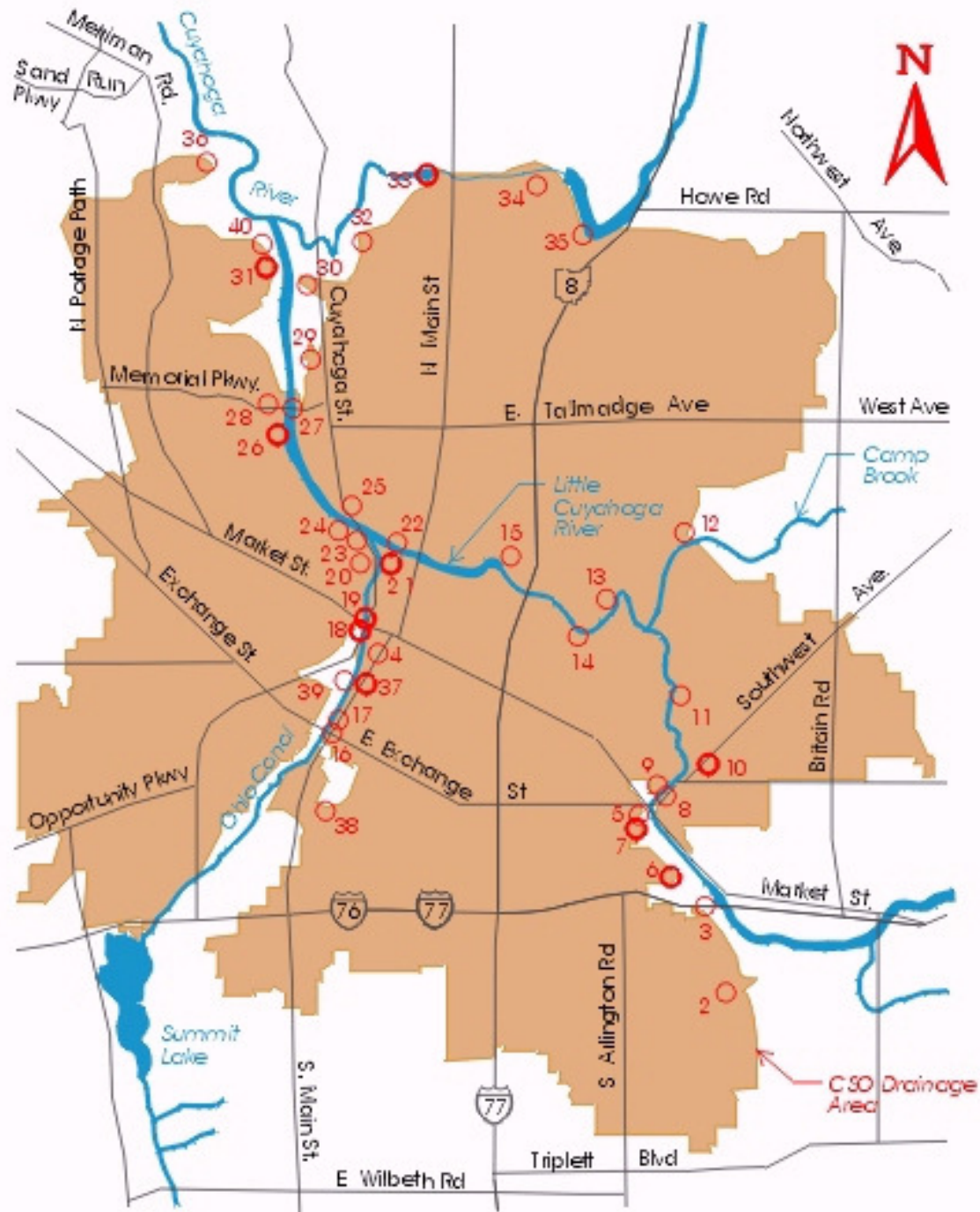
- Internet
- Meetings
- How Large of a Sample Size

# Combine Sewer Overflow

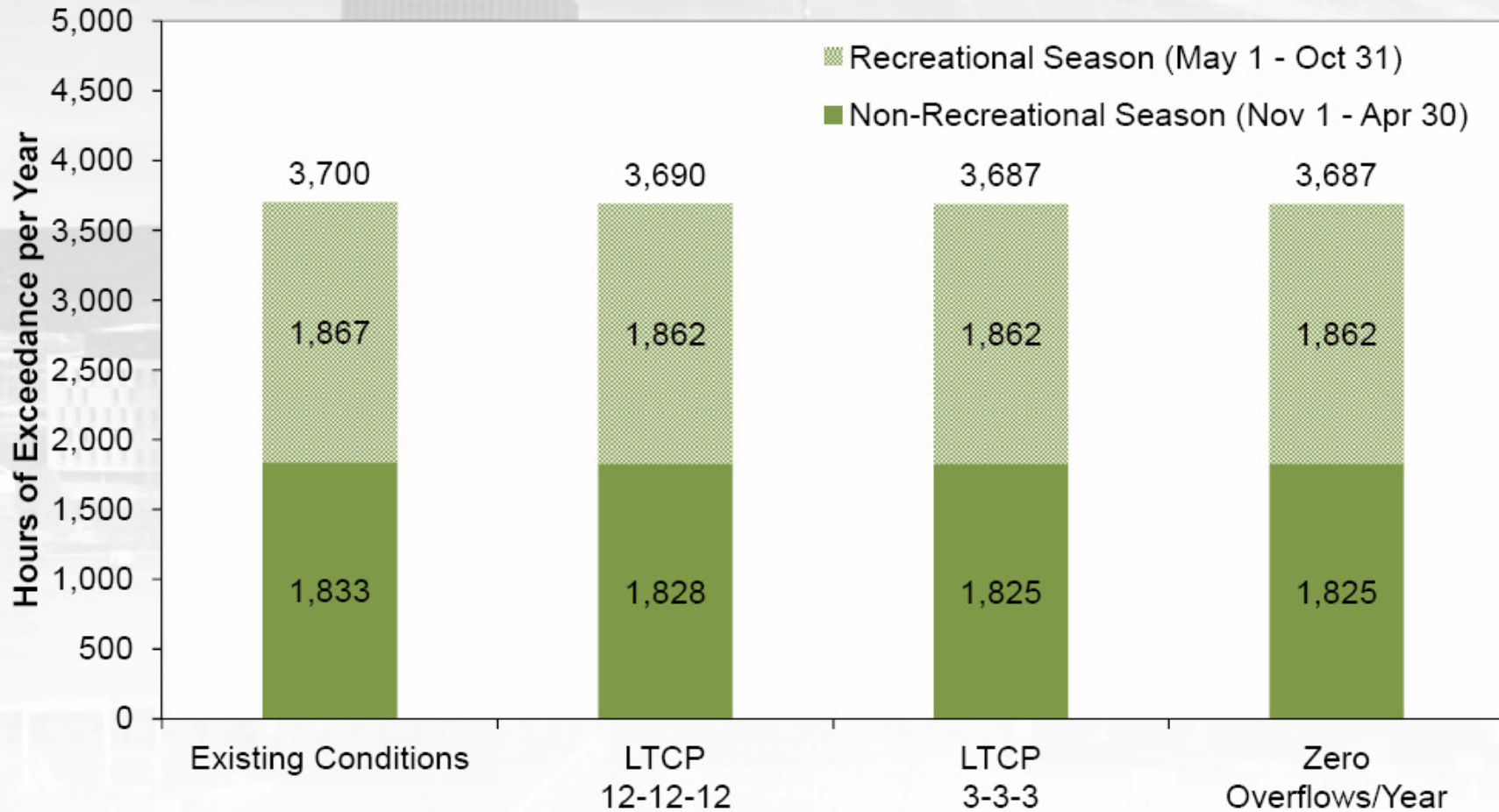
- Introduces nutrients, bacteria, and pathogens into the Little Cuyahoga
- 29 CSOs in the Little Cuyahoga River Watershed Long Term Control Plan – Implemented Over the Next 15 Years
- Approved by Key Stakeholders
- Judge Adams Reviewing
- 0 Untreated Overflows During a Normal Year

# CSO Control Measures

- 10 Wet Weather Storage Basins
- Sewer Separation Projects
- 2 Large Diameter Underground Storage Tunnels
- Improvements to the Wastewater Treatment Plant
- Interceptor Relief Sewer
- Sewer Inspection and Cleaning
- Mud Run Pump Station
- Over \$800 Million Price Tag



# Hours Exceeding E. coli Standard Systemwide





# Group Discussion



Eric Akin

[EAkin@nefcoplanning.org](mailto:EAkin@nefcoplanning.org)

[www.nefcoplanning.org](http://www.nefcoplanning.org)

330-252-0337

# Ohio Balanced Growth Program

February 15, 2013

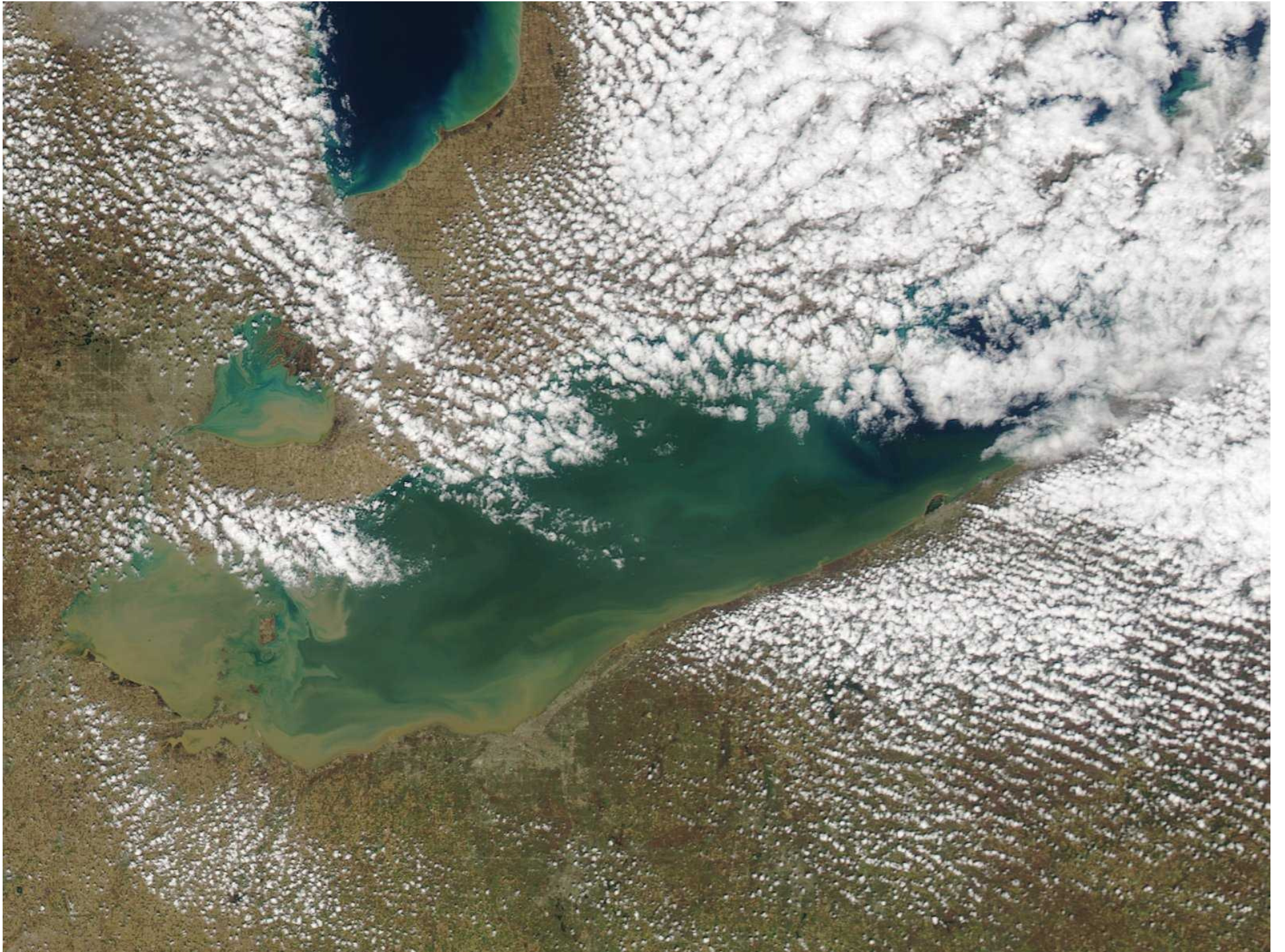
Sandra Kosek-Sills PhD

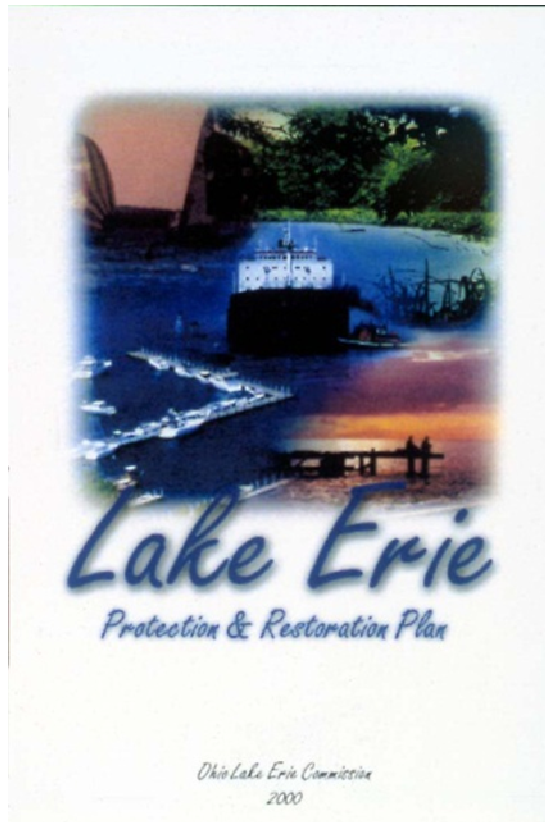
Ohio Lake Erie Commission

# Balanced Growth in Ohio

- Linking Land Use and Water Resources
- Planning Framework
  - Planning Process
  - Projects
- Best Local Land Use Practices
  - Practices List
  - Resources







## Lake Erie Protection & Restoration Plan 2008



**LEPR 2008**

---

Prepared by

Ohio Lake Erie Commission  
One Maritime Plaza, 4<sup>th</sup> Floor  
Toledo, OH 43604  
(419) 245-2514

# Linking Land Use and Water Resources

## Best Local Land Use Practices

### Ohio Balanced Growth Strategy 2011

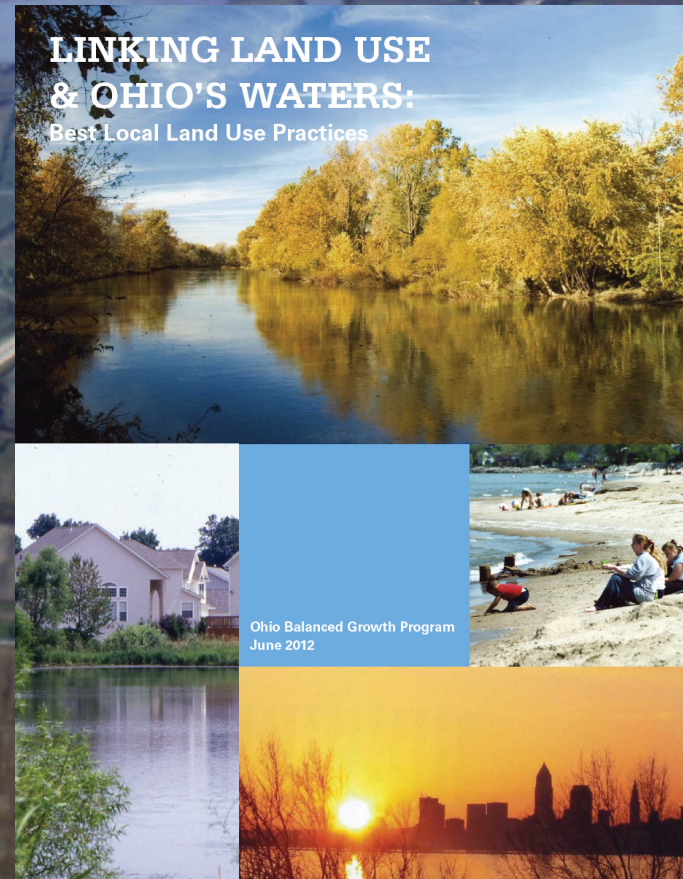


*Adopted by the Ohio Lake Erie Commission 12-21-2011  
Adopted by the Ohio Water Resources Council 2-21-2012*

Prepared by:

Ohio Lake Erie Commission  
111 E. Shoreline Drive  
Sandusky, Ohio 44870  
(419) 621-2040

Ohio Water Resources Council  
P.O. Box 1049  
Columbus, Ohio 43216  
(614) 644-2039



### LINKING LAND USE & OHIO'S WATERS: Best Local Land Use Practices

Ohio Balanced Growth Program  
June 2012

## Planning Framework

# Balanced Growth Watershed Planning

- voluntary
- locally led
- incentive-based
- support through alignment of state policies and programs



## Project Components

- GIS-based decision support system
- Local government buy-in
- State agency coordination
- Review and endorsement process
  - “significant” local support prior to endorsement: 75% of...
    - population
    - land area
    - number of communities

## What does a plan contain?

- Designation of Priority Conservation Areas
- Designation of Priority Development Areas
- Designation of Priority Agricultural Areas (where applicable)
- Local and state participation and approval
- Process for maintaining and updating the plan
  - Full Table of Contents available online

## Priority Development Area

- Locally designated areas targeted for development or redevelopment
- Maximize development potential and efficient use of infrastructure
- Promote revitalization of existing urban areas



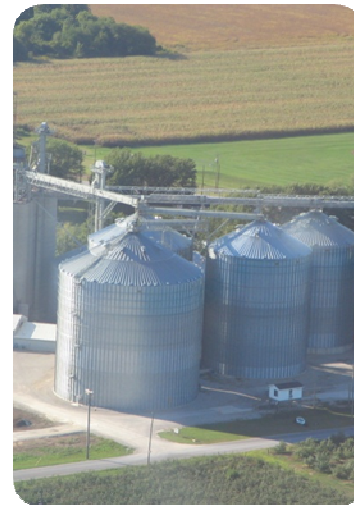
## Priority Conservation Area

- Locally designated areas targeted for protection and restoration
- Identify critically important ecological, recreational, heritage, *agricultural*, and public access areas



# Priority Agricultural Area

- Locally designated areas targeted for agriculture
- Protect critical farmland and efficiently use infrastructure
- Optional designation based on local desire





**PCA: Priority Conservation Area**

Proximity to protected properties

Proximity to open space

Proximity to shoreline

Is part of a larger parcel (20 ac.) or is in top 20% in size of all parcels in study

Presence of a Coastal Erosion Area (CEA)

Steep slope (> 12 %)

Floodplain / floodways

Amount forest via Riparian corridor width

Riparian setback present

Wetland characteristics

Stream habitat quality

Watershed quality

12

**PAA: Priority Agricultural Area**

Agricultural Land use

Located within an Agricultural District

Land located with preservation easements

Enrolled in Current Agricultural Use Value (CAUV)

USDA Prime Soil

5

**PDA: Priority Development Area**

Land use

Existing zoning

Comprehensive plan designation

Soil Limitations

Located within economic development area (*JEDD, CEDA, TIFF, Enterprise zone,...*)

Adjacent to Laketran fixed route

Planned for or adjacent to existing development

Served by sanitary sewer

Served by public water

Located near an intersection

10



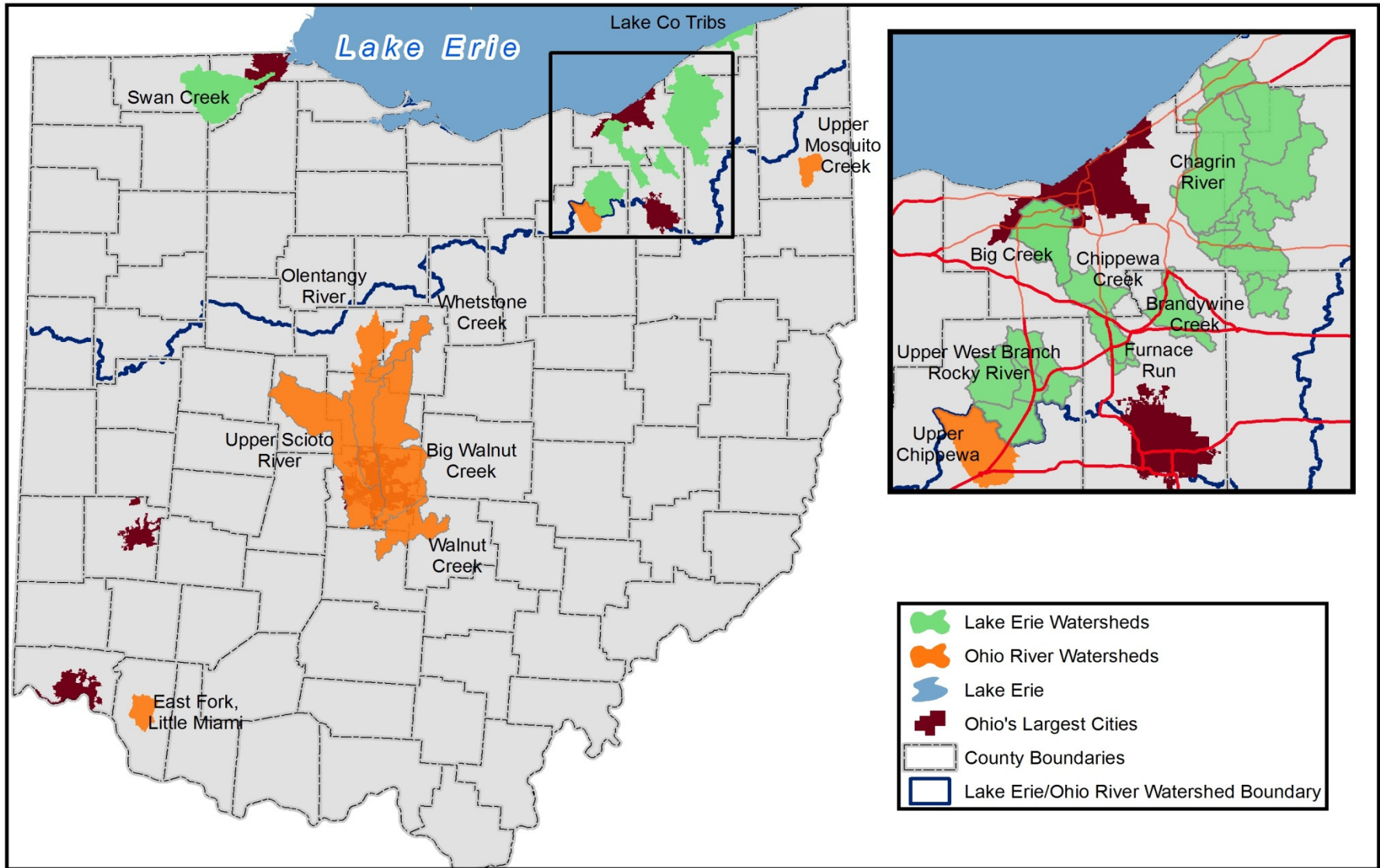
# Priority Area Mapping Process

- Technical cmtes produced draft maps based on criteria
- Review by Steering cmte/WPP
- Final draft maps presented to local communities
- Don't underestimate the importance of one-on-one local contact

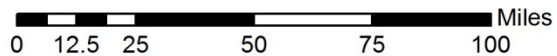
# Community Support

- Draft maps revised based on community input
- If the process meets the requirements of the BG Program, the final result is up to the WPP
  - High flexibility in final maps, local reasons
  - Communities satisfied with maps usually pass resolutions
- Comprehensive plan updates follow at discretion of local community
- Awareness raising for officials and public

# Balanced Growth Planning Partnership Watersheds



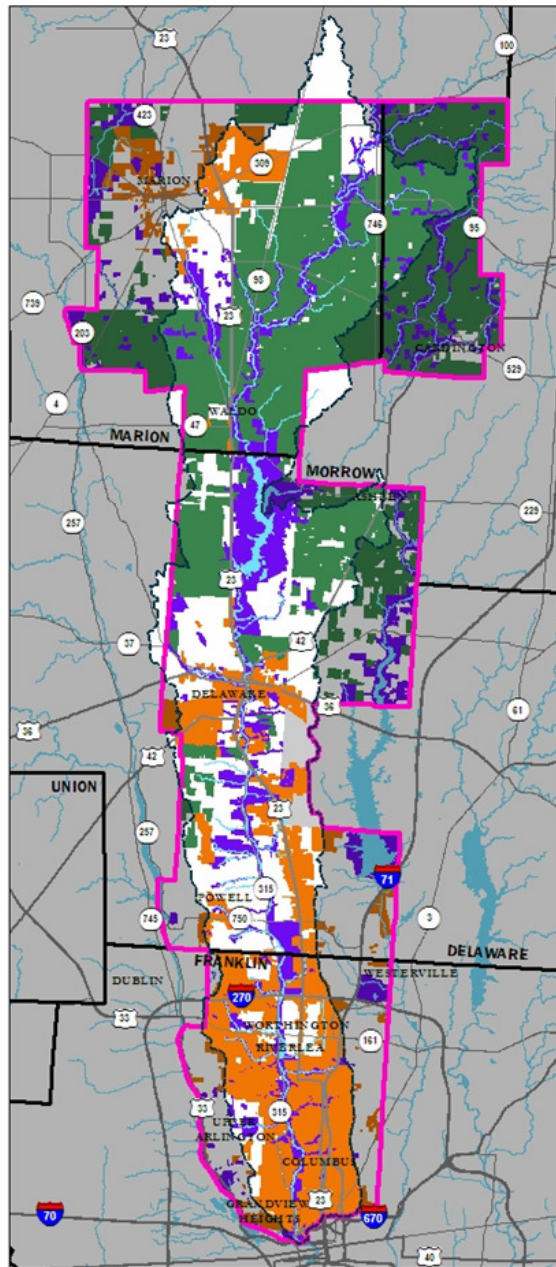
Map created with the assistance of ODNR - Office of Coastal Management and ODNR - Division of Soil and Water Resources. March 2012.



[balancedgrowth.ohio.gov](http://balancedgrowth.ohio.gov)

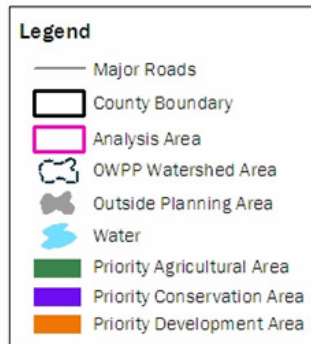






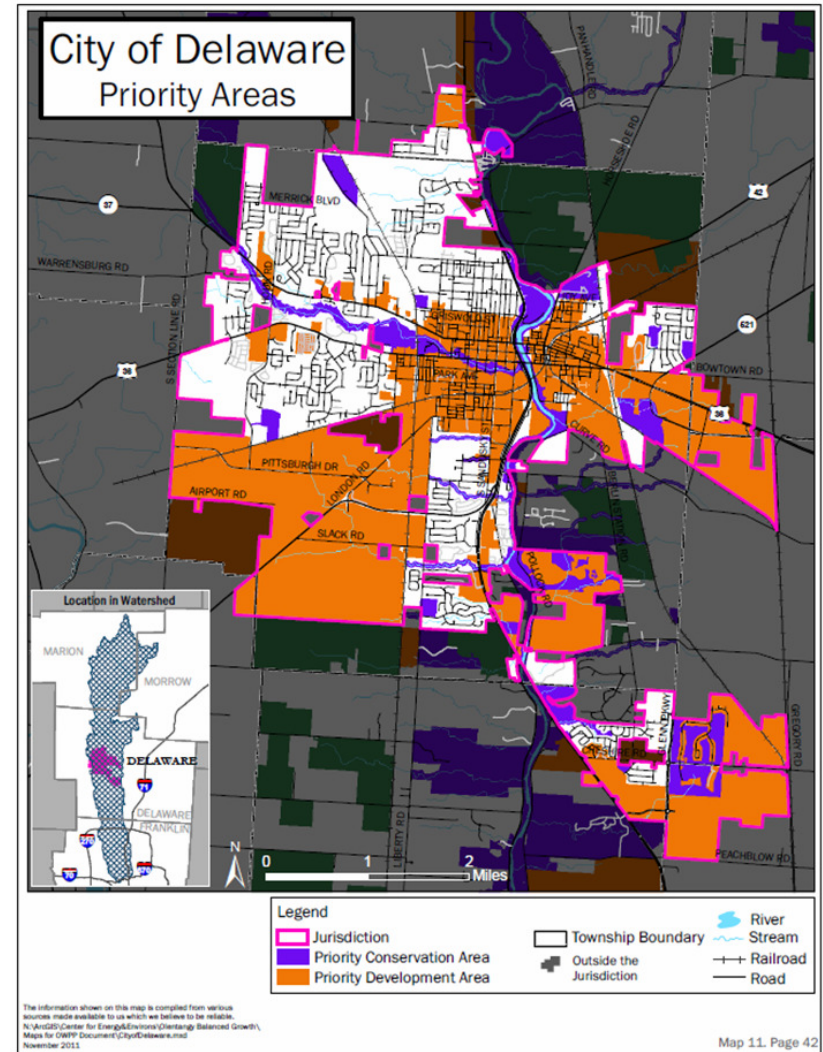
# Olentangy Watershed

## Priority Area Designations



The information shown on this map is compiled from various sources made available to us which we believe to be reliable. N/AUGS/Center for Energy/Environment/Olentangy Balanced Growth/ Maps for OWPP Document/01/11/2012/01/11/2012

Map 9, Page 40



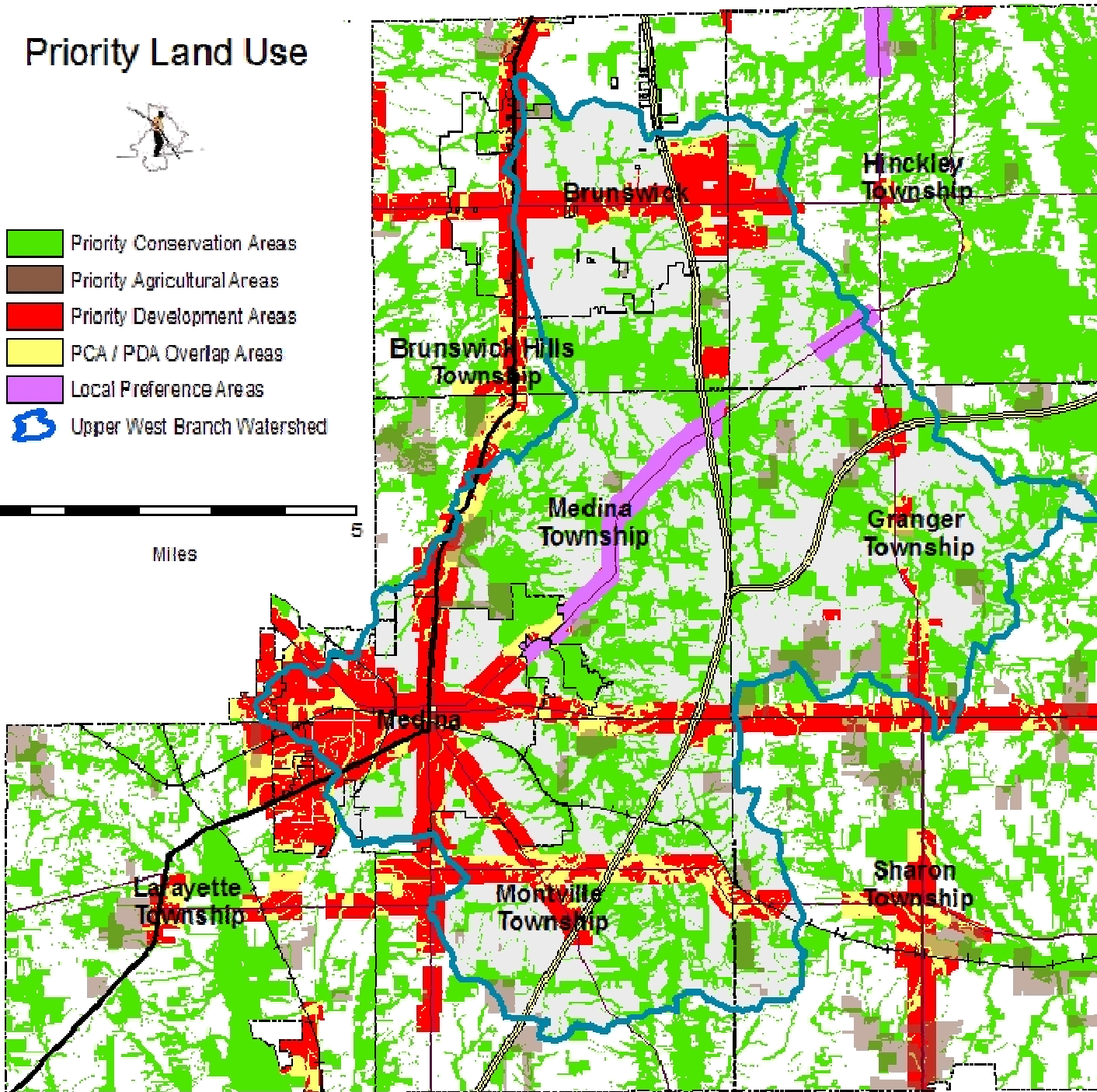
The information shown on this map is compiled from various sources made available to us which we believe to be reliable. N/AUGS/Center for Energy/Environment/Olentangy Balanced Growth/ Maps for OWPP Document/01/11/2012/01/11/2012

Map 11, Page 42

# Priority Land Use



- Priority Conservation Areas
- Priority Agricultural Areas
- Priority Development Areas
- PCA / PDA Overlap Areas
- Local Preference Areas
- Upper West Branch Watershed



## Special Incentives (January 2013)

**These programs contain specific special incentives for Balanced Growth participating communities.**

**Red:** extra points on applications

**Blue:** special consideration in review process

**Gray:** percentage point discounts

**Green:** priority technical assistance

**Underline:** Grant programs

- [Clean Ohio Agricultural Easement Purchase Program](#)
- [Recreation Harbor Evaluation Program](#)
- [CWA Section 319 Implementation Grants](#)
- [Water Supply Revolving Loan Account](#)
- [Water Pollution Control Loan Fund](#)
- [Ohio Coastal Mgmt Assistance Grants](#)
- [Land & Water Conservation Fund](#)
- [Nature Works](#)
- [Watershed Coordinator Grant Program](#)
- [Market Development Grant](#)
- [Lake Erie Protection Fund](#)

- [Scrap Tire Grant](#)
- [Section 208 \(State Water Qual. Mgmt Plan\)](#)
- [Ohio Lake Erie Conservation Reserve Enhancement Program \(CREP\) and Scioto River Watershed CREP](#)
- [Transportation Review Advisory Council \(TRAC\) Funds](#)
- [Dam Safety Loan Program](#)
- [Fresh Water Loan Group](#)
- [Community Assistance Loan Program](#)
- [National Flood Insurance Program Community Rating System](#)
- [Redevelopment Technical Assistance](#)
- [Agricultural Security Area](#)
- [Streams & Storm Water Program](#)
- [Statewide Geologic Mapping Program](#)
- [Dam Safety Technical Assistance](#)
- [Floodplain Mgmt. Tech Asst. Program](#)
- [Ohio Community Services Agency Technical Support](#)

eInventory of State Programs

- Balanced Growth Home
- Balanced Growth Strategy
- Balanced Growth Planning
- Best Local Land Use Practices
- Fact Sheets
- Upcoming Events
- Ohio Lake Erie Commission
- Ohio Water Resources Council
- Frequently Asked Questions
- News

**Welcome to the eInventory of State Programs**

This Inventory of State Programs is a resource for local communities and others to help identify existing state programs that will support local conservation and development or redevelopment activities. The Inventory of State Programs is organized by programs supporting Priority Agricultural Areas, Priority Conservation Areas, or programs supporting Priority Development Areas. The online inventory sorts the programs into clusters that allow users to identify potentially relevant programs based on land use type. Click on one of the links below to get started:

- [Programs Supporting Priority Agricultural Areas \(PAAs\)](#)
- [Programs Supporting Priority Conservation Areas \(PCAs\)](#)
- [Programs Supporting Priority Development Areas \(PDAs\)](#)

The Balanced Growth Inventory of State Programs is in Appendix C of the Balanced Growth Strategy. Click on Balanced Growth Strategy in the left hand column to access the full document.

Programs which provide a special incentive to local communities participating in state endorsed Balanced Growth Plans are marked with the tag **SPECIAL INCENTIVE**. For details, see the Special Incentives document.

This portion of the Balanced Growth web site was prepared by the Ohio Lake Erie Commission under award NA11ONDS4190182 from the National Oceanic and Atmospheric Administration, U.S. Department of Commerce through the Ohio Department of Natural Resources, Office of Coastal Management. The statements, findings, conclusions, and recommendations are those of the author(s) and do not necessarily reflect the views of the National Oceanic and Atmospheric Administration, Department of Commerce, Ohio Department of Natural Resources, or the Office of Coastal Management.

- Navigator
- [eInventory Home](#)
  - [PAA Home](#)
  - [PCA Home](#)
  - [PDA Home](#)

PriorityDevelopmentAreas - Mozilla Firefox

http://balancedgrowth.ohio.gov/BalancedGrowthStrategy/eStateProgramsInventory/PriorityDevelopmentAreas.a

Ohio.gov | Ohio Balanced Growth Program

Home | Balanced Growth Strategy | Balanced Growth Planning | Best Local Land Use Practices | News

eInventory of State Programs

Balanced Growth Home  
Balanced Growth Strategy  
Balanced Growth Planning  
Best Local Land Use Practices  
Fact Sheets  
Upcoming Events  
Ohio Lake Erie Commission  
Ohio Water Resources Council  
Frequently Asked Questions  
News

**Priority Development Areas (PDAs)**

Find programs supporting Priority Development Areas by land use or infrastructure type:

Airports	Solid Waste Systems
Brownfields	Storm Water Utilities
Residential	Transportation
Agriculture	Wastewater Treatment
Commercial/Industrial	Drinking Water Utilities
Lake Erie Shore	Dams

Return to [eInventory of State Programs Home](#)

Navigator

- [eInventory Home](#)
- [PAA Home](#)
- [PCA Home](#)
- [PDA Home](#)

PDA Drinking Water Utilities - Mozilla Firefox

http://balancedgrowth.ohio.gov/BalancedGrowthStrategy/eStateProgramsInventory/PriorityDevelopmentAreas/DrinkingWaterUtilities.a

Ohio.gov | Growth Program

Home | Balanced Growth Strategy | Balanced Growth Planning | Best Local Land Use Practices | News

Balanced Growth eInventory of State Programs

Balanced Growth Home  
Balanced Growth Strategy  
Balanced Growth Planning  
Best Local Land Use Practices  
Fact Sheets  
Upcoming Events  
Ohio Lake Erie Commission  
Ohio Water Resources Council  
Frequently Asked Questions  
News

**Programs supporting development or redevelopment of Drinking Water utilities:**

There are 12 programs on this page, please scroll down to view complete list. For complete details on each program, including agency contacts, please see the listing in the printed [Inventory of State Programs, Appendix C of the Balanced Growth Strategy](#) or click the program website link.

Program Name and Type of Assistance	Program Link	Special Incentive	Agency
Drinking Water Assistance Fund - Water Supply Revolving Loan Account <small>(Financial Assistance: Loans)</small>	<a href="#">Program Website</a>	SPECIAL INCENTIVE	Ohio EPA and Ohio Water Development Authority
Provides low interest loans and principal forgiveness to eligible public water systems to fund improvements to eliminate public health threats and ensure compliance with federal and state drinking water laws and regulations.			

Navigator

- [eInventory Home](#)
- [PAA Home](#)
- [PCA Home](#)
- [PDA Home](#)

# Linking Land Use and Water Resources

## Best Local Land Use Practices

### Ohio Balanced Growth Strategy 2011

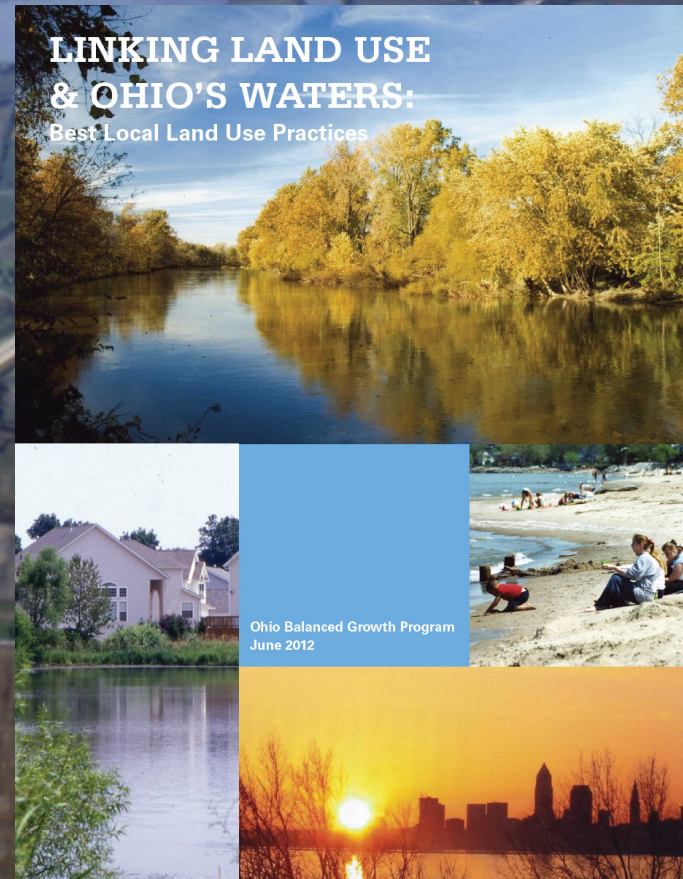


*Adopted by the Ohio Lake Erie Commission 12-21-2011  
Adopted by the Ohio Water Resources Council 2-21-2012*

Prepared by:

Ohio Lake Erie Commission  
111 E. Shoreline Drive  
Sandusky, Ohio 44870  
(419) 621-2040

Ohio Water Resources Council  
P.O. Box 1049  
Columbus, Ohio 43216  
(614) 644-2039



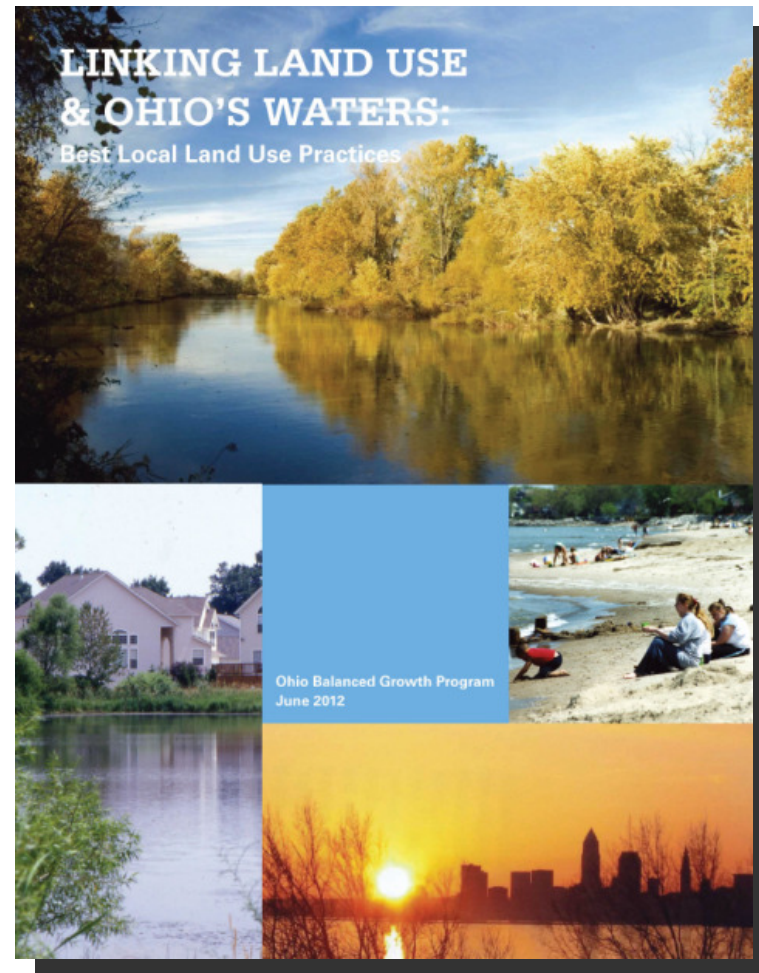
### LINKING LAND USE & OHIO'S WATERS: Best Local Land Use Practices

Ohio Balanced Growth Program  
June 2012

## Planning Framework

# Ohio Best Local Land Use Practices: Information For Local Communities

- Comprehensive Planning
- Compact Development
- Conservation Development
- Transfer of Development Rights
- Brownfields Redevelopment
- Source Water Protection
- Storm Water Management
- Stream, Floodplain, Wetland Protection
- Steep Slope Protection
- Scenic Protection
- Historic Protection
- Agricultural Protection
- Natural Areas Management
- Woodland Protection
- Access Management



## Best Local Land Use Practices: Resources

- Web site [balancedgrowth.ohio.gov](http://balancedgrowth.ohio.gov)
- Best Local Land Use Practices document – issues, guidance, recommendations
  - Example regulations
- Education and technical workshops
  - Regional meeting in March/April 2013
- Ongoing technical assistance
- DVD for elected officials and business interests ([see video on web](#))

Ohio

# Tools: Video

Now on  
YouTube!

## Best Local Land Use Practices Video

Balanced Growth Home  
Balanced Growth Strategy  
Balanced Growth Planning  
Best Local Land Use Practices  
Community Technical Assistance  
Fact Sheets  
Upcoming Events  
Ohio Lake Erie Commission  
Ohio Water Resources Council  
Frequently Asked Questions  
News



Username:  
OhioLakeErie



# Ohio | Balanced Growth

**Ohio** | Lake Erie  
Commission

**Gail Hesse**

Executive Director

419.621.2040

[gail.hesse@lakeerie.ohio.gov](mailto:gail.hesse@lakeerie.ohio.gov)

**Sandra Kosek-Sills PhD**

Balanced Growth Coordinator

419.357.2775

[sandra.kosek-sills@lakeerie.ohio.gov](mailto:sandra.kosek-sills@lakeerie.ohio.gov)

**Ohio** | Water Resources  
Council

**Brian Hall**

OWRC Administrator

**Ashley Ward**

Environmental Specialist, Ohio EPA

[ashley.ward@epa.state.oh.us](mailto:ashley.ward@epa.state.oh.us)

**Cleveland State  
University**  
Maxine Goodman Levin  
College of Urban Affairs

**Kirby Date, AICP**

Best Local Land Use Practices

Program Manager

216.687.5477

[k.date@csuohio.edu](mailto:k.date@csuohio.edu)

## Little Cuyahoga River Proposed Balanced Growth Initiative Frequently Asked Questions

### What is a Balanced Growth Planning?

Adopted in 2009, Ohio's Balanced Growth Program is a **voluntary, incentive-based** strategy to protect and restore Lake Erie, the Ohio River, and Ohio's watersheds to assure long-term economic competitiveness, ecological health, and quality of life. The recommendations focus on reducing urban sprawl, protecting natural resources and encouraging redevelopment in urban areas.

### Why Participate in Balanced Growth Program?

**Financial incentives** - There are 26 environmental and economic development state programs that include special consideration for Balanced Growth participating communities. A participating community is one that has passed a resolution of support for a Watershed Balanced Growth Plan that will be or has been endorsed by the state. Please refer to the handout titled "Ohio Balanced Growth Program Fact Sheet: Special Incentives" for details what programs are linked to the program.

### Why the Little Cuyahoga River?

The timing is right for a Little Cuyahoga River Balanced Growth Plan, according to attendees at two watershed meetings held in 2010 and 2012. Several projects have been recently completed, are on-going, or are planned over the next several years. These projects include stream restoration work near the Goodyear World Headquarters development, the City of Akron's Long Term Control Plan for nearly eliminating combined sewer overflows, and storm water programs throughout the watershed. A Balanced Growth Plan would provide a uniform vision of development and natural resource protection for the watershed. In addition, financial incentives linked to the Balanced Growth Program could help communities fund future stream restoration and economic development projects.

### What is Needed from Little Cuyahoga River Watershed Communities?

**Participation and a Resolution of Support** - For a Balanced Growth Plan to be approved and successful, local government representatives must be involved with the plan's development and implementation. Local input is needed to determine priority areas for development, re-development, conservation, and agriculture. In order to be endorsed by the state thereby making the watershed communities eligible for special financial incentives, local governments representing 75% of the watershed's area **and** population must pass a resolution of support for the Balanced Growth Plan once completed.

### How is the Balanced Growth Plan Development Funded?

NEFCO currently is using funds received from Ohio EPA and membership due to address water quality issues in Portage, Summit, Stark, and Wayne Counties. NEFCO is not requesting any additional funds from local watershed communities to develop the Balanced Growth Plan.

## Little Cuyahoga River Proposed Balanced Growth Initiative Watershed Characteristics

### **Watershed Size**

Watershed Size = 63.3 square miles

City of Akron = 41.3%  
Suffield Township = 23.3%  
City of Tallmadge = 12.4%  
Springfield Township = 8.8%  
Brimfield Township = 7.9%  
Village of Mogadore = 3.4%  
Village of Lakemore = 2.4%  
Randolph Township = less than 1%

*(NEFCO, 2012)*

### **Watershed Land Cover**

Open Water = 5.0%  
Developed, Open Space = 21.5%  
Developed, Low Intensity = 23.5%  
Developed, Med. Intensity = 14.6%  
Developed, High Intensity = 6.8%  
Barren Land = 0.1%  
Deciduous Forest = 16.2%  
Evergreen Forest = 1.1%  
Grassland = 1.2%  
Pasture Hay = 4.7%  
Cultivated Crops = 3.8%  
Woody Wetlands = 1.4%

*(National Land Cover Data, 2006)*

### **Watershed Impervious Area**

Entire Watershed = 24.0%

### **Subwatershed Impervious Areas**

Mogadore Reservoir Subwatershed = 3.1%  
Wingfoot Lake to Springfield Lake Outlet Subwatershed = 17.6%  
Springfield Lake Outlet Subwatershed = 26.8%  
Springfield Lake Outlet to Mouth Subwatershed = 43.6%

*(NEFCO, 2010)*

### **Little Cuyahoga River Water Quality Summary**

- Not Attaining Biological (fish & macroinvertebrates) and Recreational (bacteria) Use Standards
- Reasons: Combined Sewer Overflows, Habitat Loss, Polluted Storm Water Runoff, Legacy Pollution, Dams, Dredging, and Organic Enrichment
- Harmful Algal Blooms in Wingfoot Lake
- Poor Water Quality Throughout the Watershed

*(Ohio EPA, 2010 Integrated Water Quality Monitoring and Assessment Report)*

### **Watershed Population**

Watershed Population = 122,907

City of Akron = 74.5%  
City of Tallmadge = 9.6%  
Springfield Township = 5.9%  
Suffield Township = 3.2%  
Village of Mogadore = 3.2%  
Village of Lakemore = 2.4%  
Brimfield Township = 1.2%  
Randolph Township = less than 1%

*(US Census, 2010)*

### **Watershed Land Use**

Vacant Land = 35.5%  
Residential = 30.3%  
Transportation Facilities = 12.8%  
Public Open Space = 7.2%  
Manufacturing = 3.7%  
Public Buildings = 3.4%  
Service Industry = 2.8%  
Wholesale = 1.9%  
Retail Goods = 1.3%  
Transportation Terminals/Utility Facilities = 0.7%  
Other = 0.4%

*(AMATS, 2005)*