

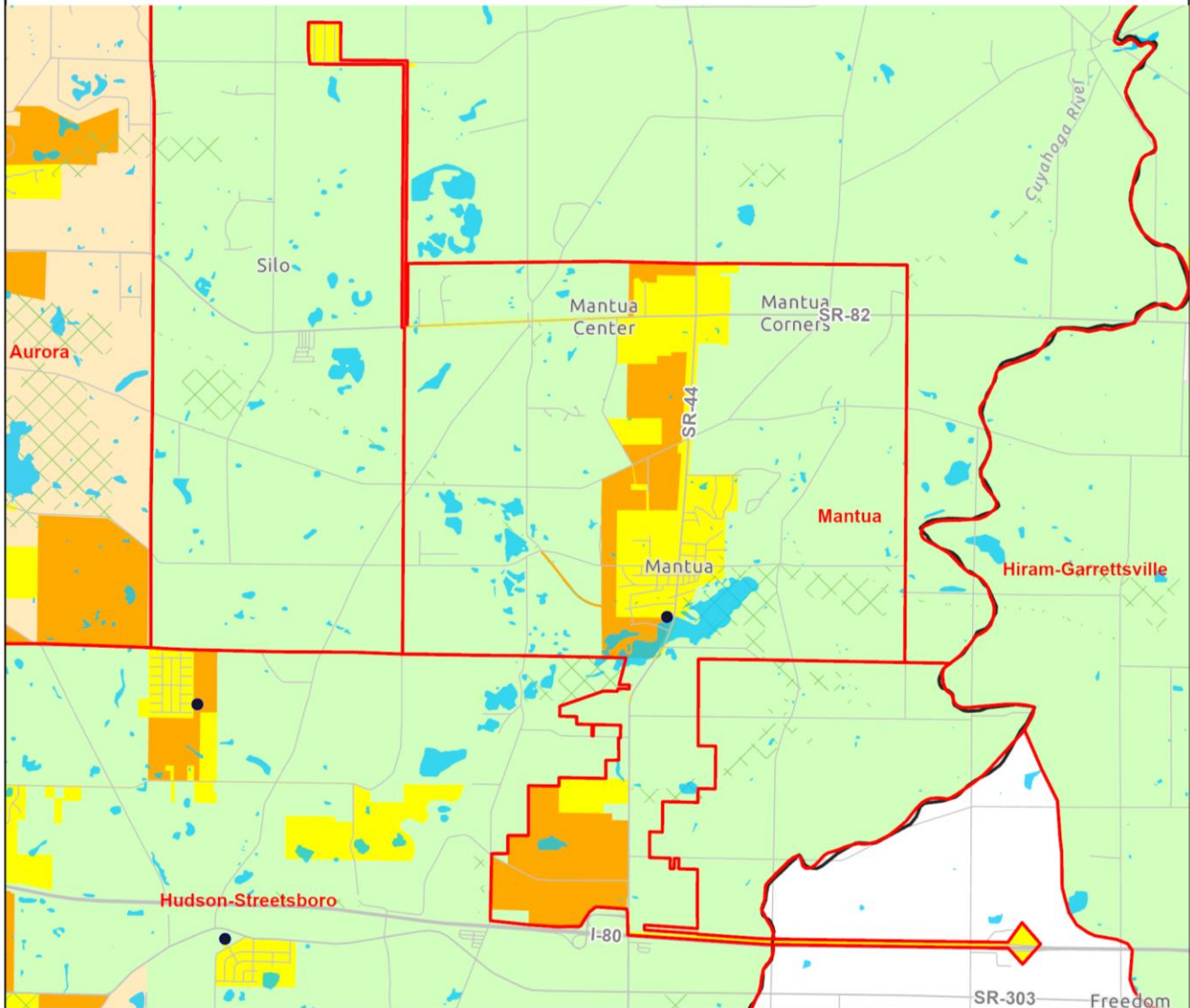
Appendix 3-8

Mantua Facilities Planning Area

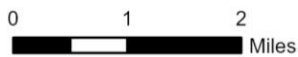
**Approved by the NEFCO General Policy Board
2/16/2022**

Mantua Facilities Planning Area

208 Clean Water Plan



- | | |
|---|--|
| Areas Currently Served with Sanitary Sewer | FPA Boundary |
| Areas Expected to be Served with Sanitary Sewers within the next 20 Years | Lake Erie Basin-Ohio River Basin Divide (NHD 2016) |
| Areas that will be Served by Home Sewage and Semi-Public Sewage Disposal Systems | Stream |
| Areas that will be Served by a POTW or by Home Sewage and Semi-Public Sewage Disposal Systems | Municipal Boundary |
| Areas Without a Wastewater Treatment Planning Prescription | County Boundary |
| Parks and Conservation Areas | Numbered Route |
| Lakes and Ponds | Other Road |
| | Publicly Owned Wastewater Treatment Works (POTW) |



* Please see Clean Water Plan text for a complete explanation of the mapping categories.
 * Please see the FPA Reference Map (Appendix 3-1) for names of adjacent FPAs .

Northeast Ohio Four County Regional Planning and Development Organization, 2022
 Sources: Portage County GIS; Ohio EPA; National Hydrologic Database; AMATS; NEFCO; ESRI base map.

Approved by the NEFCO General Policy Board
 2/16/2022

Mantua Facilities Planning Area

I. Existing Situation

A. County/Basin:

Portage/Lake Erie

B. Facilities Planning Area:

Mantua

C. Management Agency (MA):

I. Primary MA

a) Portage County Water Resources Department (Portage County Regional Sewer District)

II. Secondary MAs

a) Portage County Water Resources Department (Portage County Regional Sewer District)

D. Publicly-Owned Treatment Works:

Mantua WWTP, .5000 MGD

E. Facilities Plan:

Unknown

F. Area Served:

Village of Mantua, Mantua Township (part), Freedom Township (part), Shalersville Township (part)

G. Receiving Stream:

Cuyahoga River

H. Contact Person/Address/Phone/Fax:

a) Portage County Water Resources Director/Sanitary Engineer
Portage County Water Resources Department
8116 Infirmery Road
Ravenna, Ohio 44266
Phone: (330) 297-3670
Fax: (330) 297-3680

I. Population Served:

The population projections used in the 201 Plan and those in the NEFCO 208 Clean Water Plan are compared below.

a) Mantua	<u>1990</u>	<u>1995</u>	<u>2000</u>	<u>2005</u>	<u>2010</u>	<u>2015</u>	<u>2020</u>	<u>2025</u>
201	----	----	-----	----	----	----	----	----
Approved 208	2,628	2,734	2,846	2,948	----	----	----	----

**Approved by the NEFCO General Policy Board
2/16/2022**

The above population projections (Approved 208) were prepared in 1990. Updated projections are scheduled to be prepared after county population projections are produced by the Ohio Department of Development Office of Strategic Research.

II. Wastewater Treatment Planning Prescriptions and Wastewater Planning Options

Original source information provided by the Village of Mantua, December 4, 2000 and Portage County Water Resources Department (Portage County Regional Sewer District), June 30, 2000.

Mantua Jurisdiction

Areas Currently Served with Sanitary Sewers (yellow):

These areas are currently served with sanitary sewers that have been constructed and are currently in operation. All new development and construction in this area will be required to connect to and/or provide sanitary sewer service to ensure that wastewater will be treated at the existing Village of Mantua's Wastewater Treatment Plant. Any existing private treatment systems, which cease to operate properly, shall be abandoned and connection made to the existing sanitary sewer system.

Areas Expected to be Served with Sanitary Sewers within the next 20 Years (orange):

All future sanitary sewers constructed in this area will be connected to the Village of Mantua's Wastewater Treatment Plant. These areas will be served by sanitary sewers upon request and at the applicant's expense. If applicable, the extension of sanitary sewer service to properties outside the corporation limits of the Village of Mantua shall abide by any intergovernmental agreement in place between the Village of Mantua and the Portage County Board of Commissioners.

Existing household sewage disposal systems must be abandoned when sanitary sewers are available to the property and in accordance with the requirements of the Ohio Administrative Code. New on-site sewage disposal systems must comply with the regulations and guidelines of the Portage County Health Department. Off-lot discharging systems in this area will not be permitted.

Portage County Water Resources Department (Portage County Regional Sewer District) Jurisdiction

Areas Currently Served with Sanitary Sewers (yellow):

Mantua Township - These areas are currently served with sanitary sewers that have been constructed and are currently in operation. However, there may be undeveloped tracts of land and vacant lots subject to improvement. All new development and construction in the yellow areas of this facility planning area will be required to connect to and/or provide sanitary service to ensure that wastewater will be treated at an existing publicly-owned treatment works (POTW) with modifications or expansions as required to handle the flow. Existing non-residential private treatment systems (semi-public), which cease to operate properly, shall be abandoned and connection made to the existing sanitary sewer system. Failing HSDSs serving single family homes shall be abandoned in accordance with Ohio Administrative Code 3701-29-02.

**Approved by the NEFCO General Policy Board
2/16/2022**

The Ohio Turnpike Brady's Leap Rest Stop was previously approved to be pumped to the Village of Mantua in a 201 update and is part of the area currently sewered. By agreement with the Portage County Board of Commissioners, Mantua provides sewage service to the Ohio Turnpike at Brady's Leap Plaza. The turnpike plaza, located near Limeridge Road in Freedom Township, is serviced by a pump station and force main routed west along the turnpike to S.R. 44 and north along S.R. 44 to the Village's sewer system. Further information is available from the Village of Mantua.

Areas that will be Served by a POTW or by Home Sewage and Semi-Public Sewage Disposal Systems (green):

Mantua Township - Future development will be served by an existing POTW modified or expanded as required to handle the flow or a non-discharging sewage disposal system. Non-discharging systems including on-site septic systems and systems in which the effluent is applied to the land are locally permitted at this time. New discharging systems are only permitted for repair of existing systems in cases where both central sewer and non-discharging systems are not available.