

MEMORANDUM

DATE: June 14, 2024

TO: Michelle Heit, Supervisor, New Buffalo Township

Darwin Watson, City Manager, City of New Buffalo

FROM: Eric Engel, Staff Engineer

RE: New Buffalo Township Marquette Greenway Trail Project Update- **Week of June 10, 2024**

Project Overview

This project implements the first phase of the Marquette Greenway Trail in Michigan. The project encompasses a City of New Buffalo trailhead with parking, picnic area and bike repair station at Smith and Mechanic Streets and a 10-foot-wide paved path along US-12 from Willard Street to the railroad crossing at Grand Beach Road. The project was awarded to Kalin Construction.

Marquette Greenway Trail Project

This week, Kalin Construction completed paving the shared-use hot mix asphalt (HMA) path from N Monroe Street to the retaining wall location along US-12. The contractor also completed paving the diagonal parking spaces on Mechanic Street and the trailhead parking lot located at the W Mechanic Street and N Smith Street intersection. The path transitions from concrete to asphalt at the N Monroe Street and US-12 intersection. Please see Figure 1.

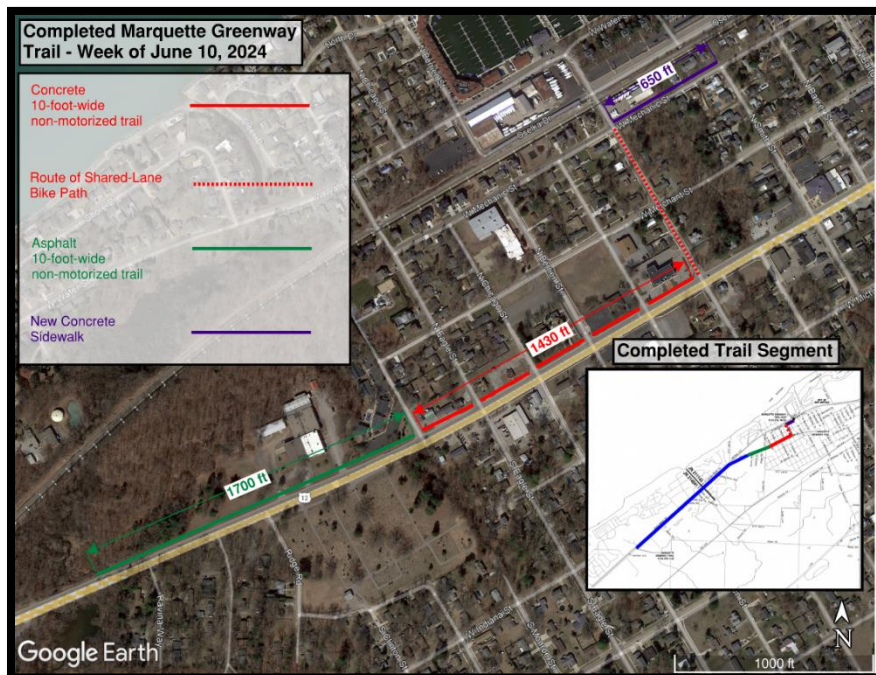


Figure 1. Completed Marquette Greenway Trail- Week of June 10, 2024

Anlaan Corporation Pouring Concrete for Retaining Wall along US-12



Anlaan Corporation, Inc. continued construction of the retaining wall north of the boardwalk location along US-12. The vertical portion of the retaining wall will be constructed in three segments. The contractor must set wall forms, pour concrete for the retaining wall, remove the forms, and reset them for the next segment. Anlaan Corporation is scheduled to pour the remainder of the retaining wall next week.

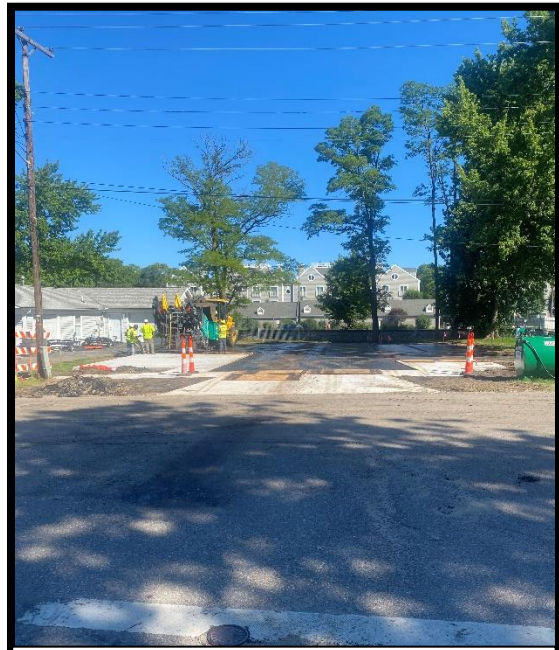
Next week, Kalin Construction is scheduled to complete laying topsoil within the city limits of New Buffalo in preparation for NERC to complete seeding and restoration for properties impacted by the trail. PK Contracting Inc. will complete pavement markings distinguishing the trail and Give 'Em A Brake Safety will install permanent signage for the Marquette Greenway Trail.

Kalin Construction received their permit to begin work within Amtrak's right-of-way. The contractor placed silt fence 26 ft from the Amtrak right-of-way for soil erosion and sedimentation control. Work within Amtrak's right-of-way is scheduled to begin in the next couple of weeks.

A double-lane closure is in place on US-12 for traffic control. This closure is scheduled to remain until the completion of the boardwalk, part of the non-motorized path along US-12.



Kalin Construction Paving Diagonal Parking Spaces on N Mechanic Street



Kalin Construction Paving Marquette Greenway Trailhead

If you have any project questions or would like to be added to the email list for project updates, please contact Eric Engel of the project team at eengel@abonmarche.com or (269) 281-6602.

