

## MEMORANDUM

DATE: June 21, 2024

TO: Michelle Heit, Supervisor, New Buffalo Township

Darwin Watson, City Manager, City of New Buffalo

FROM: Eric Engel, Staff Engineer

RE: New Buffalo Township Marquette Greenway Trail Project Update- **Week of June 17, 2024**

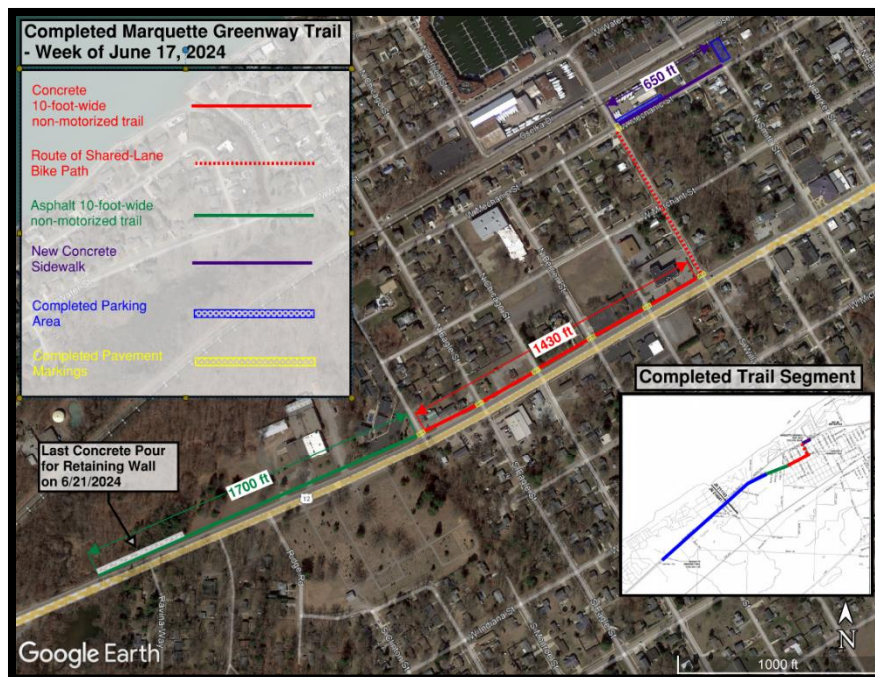
### Project Overview

This project implements the first phase of the Marquette Greenway Trail in Michigan. The project encompasses a City of New Buffalo trailhead with parking, picnic area and bike repair station at Smith and Mechanic Streets and a 10-foot-wide paved path along US-12 from Willard Street to the railroad crossing at Grand Beach Road. The project was awarded to Kalin Construction.

### Marquette Greenway Trail Project

This week, Kalin Construction completed laying topsoil and NERC completed spreading seed, fertilizer, and straw erosion control blanket to finalize restoration for properties impacted by trail construction within the city limits of New Buffalo. Straw erosion control blanket placed, will biodegrade, and should not be removed. To establish good grass growth, property owners should water their lawn at least twice per week and wait until the grass reaches 3 inches in height to mow.

Additionally, PK Contracting Inc. completed pavement markings distinguishing the trail within the city limits. These markings included striping for crosswalks, stop bars, and sharrows. Please see Figure 1.



**Figure 1. Completed Marquette Greenway Trail- Week of June 10, 2024**

Anlaan Corporation, Inc. continued construction of the retaining wall north of the boardwalk location along US-12. The vertical portion of the retaining wall will be constructed in three segments. The contractor must set wall forms, pour concrete for the retaining wall, remove the forms, and reset them for the next segment.

The contractor is scheduled to complete pouring concrete for the retaining wall on **June 21, 2024**. Upon completion, Anlaan is scheduled to backfill and perform site restoration at the retaining wall location.



**2<sup>nd</sup> Segment of Retaining Wall  
Concrete Pour**



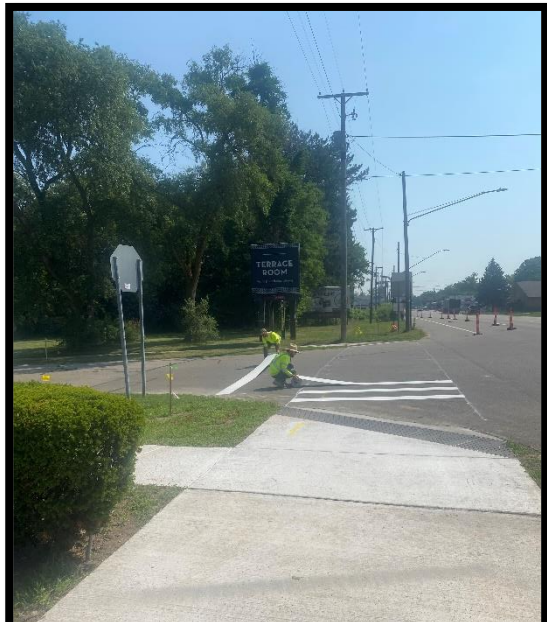
**Anlaan Corporation Setting  
Retaining Wall Forms**

Next week, Kalin Construction is scheduled to complete installing silt fence along Amtrak's corridor for soil erosion and sedimentation control starting at the Grand Beach railroad crossing. The contractor is also scheduled to complete path grading for the Marquette Greenway Trail, southwest of the retaining wall location along US-12.

Give 'Em A Brake Safety is scheduled to install permanent signage within the city limits of New Buffalo.

A double-lane closure is in place on US-12 for traffic control. This closure is scheduled to remain until the completion of the boardwalk, part of the non-motorized path along US-12.

If you have any project questions or would like to be added to the email list for project updates, please contact Eric Engel of the project team at [eengel@abonmarche.com](mailto:eengel@abonmarche.com) or (269) 281-6602.



**PK Contracting Inc. Installing  
Crosswalk Striping and Stop Bar**

