

Notary's Office
 Berrien County, Mich.
 at the office of Division of Tolls
 555 etc of Virginia Ad.
 A.D. 27 10
 Don R. Rosner
 Notary Public

**SUBDIVISION OF ENTIRE BLOCKS 355 AND 359
 AND PART OF BLOCK 363
 VIRGINIA
 ADDITION
 TO THE VILLAGE OF NEW BUFFALO
 BERRIEN COUNTY, MICHIGAN**

DEDICATION.

KNOW ALL MEN BY THESE PRESENTS, That we, George Rosner, bachelor, and August Rosner and Freda Rosner, his wife, and Willard Palen and Pearl S. Palen, his wife, and James F. McClinochy and Miriam McClinochy, his wife,

as proprietors, have caused the land embraced in the annexed plat to be surveyed, laid out and platted, to be known as "SUBDIVISION OF ENTIRE BLOCKS 355 and 359 and PART OF BLOCK 363 VIRGINIA ADDITION" to the VILLAGE OF NEW BUFFALO BERRIEN COUNTY MICHIGAN and that the streets and alleys as shown on said plat are hereby dedicated to the use of the public.

- George Rosner.....(L.S.)
- August Rosner.....(L.S.)
- Freda Rosner.....(L.S.)
- Willard Palen.....(L.S.)
- Pearl S. Palen.....(L.S.)
- James F. McClinochy.....(L.S.)
- Miriam McClinochy.....(L.S.)

Signed and Sealed in Presence of
 G. V. O'Connell
 G. B. O'Connell

STATE OF MICHIGAN } s.s.
 County of Berrien }

On this Twenty First day of December, 1926 before me a Notary Public in and for said County, personally came the above named George Rosner, bachelor,

and August Rosner and Freda Rosner, his wife, and Willard Palen and Pearl S. Palen, his wife, and James F. McClinochy and Miriam McClinochy, his wife,

known to me to be the persons who executed the above dedication, and acknowledged the same to be their free act and deed.

My Commission expires, Aug. 7, 1928
 Charles V. O'Connell
 Notary Public, Berrien Co. Mich.

CERTIFICATE OF MUNICIPAL APPROVAL.

This plat was approved by the Village Council of the Village of New Buffalo, at a meeting held December 23, 1926
 G. V. O'Connell
 Clerk.

SURVEYOR'S CERTIFICATE.

I hereby certify that the plat hereon delineated is a correct one and that permanent metal monuments of not less than one inch in diameter and fifteen inches in length set in a concrete base at least four inches in diameter and forty-eight inches in depth have been placed at points marked thus "O" as thereon shown at all angles in the boundaries of the land platted, at all the intersections of streets, intersections of alleys, or of streets and alleys, and at the intersections of streets and alleys with the boundaries of the plat as shown on said plat.

A. H. Doney
 Registered Civil Engineer.

COUNTY TREASURER'S CERTIFICATE.

Office of County Treasurer, Berrien County Mich.
 I hereby certify, That there are no tax liens or titles held by the State on the lands described below, and that there are no tax liens or titles held by individuals on said lands, for the five years preceding the 10th day of January, 1927, and that the taxes for said period of five years are paid, as shown by the records of this office. This certificate does not apply to taxes, if any, now in process of collection by township, city or village collecting officers.

George Heid
 County Treasurer.

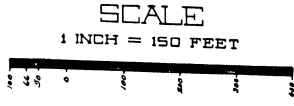
DESCRIPTION.

The land embraced in the annexed plat of "SUBDIVISION OF ENTIRE BLOCKS 355 and 359 and PART OF BLOCK 363 VIRGINIA ADDITION" to the VILLAGE OF NEW BUFFALO BERRIEN COUNTY MICHIGAN is described as follows:
 Begin at the Northeast Corner of Block 359 Virginia Company's Addition to the Village of New Buffalo, Berrien County, Michigan; thence South 60° West 264 feet; thence South 30° East 396 feet; thence North 60° East 264 feet; thence North 30° West 396 feet to the place of beginning, including all of Block 359.
 Also begin at the Southeast Corner of Block 363 of said Addition; thence North 30° West 264 feet; thence South 60° East 264 feet; thence South 30° East 264 feet; thence North 60° East 264 feet to the place of beginning, including part of Block 363.
 Also begin at the Northeast Corner of Block 355 of said Addition; thence South 60° West 264 feet; thence South 30° East 396 feet; thence North 60° East 264 feet; thence North 30° West 396 feet to the place of beginning, including all of Block 355.

CERTIFICATE OF APPROVAL BY COUNTY BOARD.

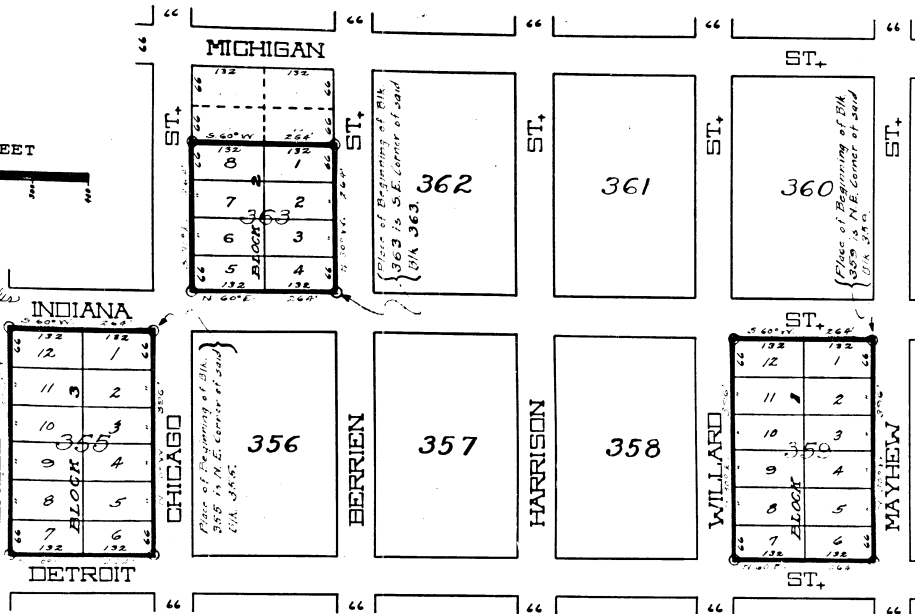
This plat was approved on the 10th day of January, 1927.
 William H. Andrews
 Judge of Probate.
 W. D. Wagner
 County Clerk.
 George Heid
 County Treasurer.

6401
125-27

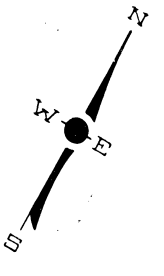


Recorder's Office
Dearborn Court House
Subdivision of Block 355 etc of Virginia Addn
Filed for Record 27-10-27
Don R. Rosner

Jan 25-1927
D. L. Harris



Jan 25-1927
D. L. Harris



SUBDIVISION OF ENTIRE BLOCKS 355 AND 359 AND PART OF BLOCK 363 VIRGINIA ADDITION TO THE VILLAGE OF NEW BUFFALO, BERRIEN COUNTY, MICHIGAN

DEDICATION.

KNOW ALL MEN BY THESE PRESENTS, That we, George Rosner, bachelor, and August Rosner and Freda Rosner, his wife, Willard Palen and Pearl S. Palen, his wife, and James F. McClinchy and Miriam McClinchy, his wife,

as proprietors, have caused the land embraced in the annexed plat to be surveyed, laid out and platted, to be known as "SUBDIVISION OF ENTIRE BLOCKS 355 AND 359 AND PART OF BLOCK 363 VIRGINIA ADDITION" to the VILLAGE OF NEW BUFFALO, BERRIEN COUNTY, MICHIGAN and that the streets and alleys as shown on said plat are hereby dedicated to the use of the public.

- George Rosner (L.S.) James F. McClinchy (L.S.)
August Rosner (L.S.) Miriam McClinchy (L.S.)
Freda Rosner (L.S.)
Willard Palen (L.S.)
Pearl S. Palen (L.S.)

Signed and Sealed in Presence of

G. V. O'Connell
G. B. O'Connell

STATE OF MICHIGAN } s a
County of Berrien }

On this Twenty First day of December, 1926 before me a Notary Public in and for said County, personally came the above named George Rosner, bachelor,

and August Rosner and Freda Rosner, his wife, and Willard Palen and Pearl S. Palen, his wife, and James F. McClinchy and Miriam McClinchy, his wife,

known to me to be the persons who executed the above dedication, and acknowledged the same to be their free act and deed.

Charles V. O'Connell
Notary Public, Berrien Co. Mich.

My Commission expires, Aug. 7, 1928

CERTIFICATE OF MUNICIPAL APPROVAL.

This plat was approved by the Village Council of the Village of New Buffalo, at a meeting held, December 23, 1926

G. V. O'Connell
Clerk.

SURVEYOR'S CERTIFICATE.

I hereby certify that the plat hereon delineated is a correct one and that permanent metal monuments of not less than one inch in diameter and fifteen inches in length set in a concrete base at least four inches in diameter and forty-eight inches in depth have been placed at points marked thus "C" as thereon shown at all angles in the boundaries of the land platted, at all the intersections of streets, intersections of alleys, or of streets and alleys, and at the intersections of streets and alleys with the boundaries of the plat as shown on said plat.

W. H. Perrey
Registered Civil Engineer.

COUNTY TREASURER'S CERTIFICATE.

Office of County Treasurer, Berrien County Mich. I hereby certify, That there are no tax liens or titles held by the State on the lands described below, and that there are no tax liens or titles held by individuals on said lands, for the five years preceding the day of January, 1927, and that the taxes for said period of five years are paid, as shown by the records of this office. This certificate does not apply to taxes, if any, now in process of collection by township, city or village collecting officers.

George Haid
County Treasurer.

DESCRIPTION.

The land embraced in the annexed plat of "SUBDIVISION OF ENTIRE BLOCKS 355 AND 359 AND PART OF BLOCK 363 VIRGINIA ADDITION" to the VILLAGE OF NEW BUFFALO, BERRIEN COUNTY, MICHIGAN is described as follows:

Begin at the Northeast Corner of Block 359 Virginia Company's Addition to the Village of New Buffalo, Berrien County, Michigan; thence South 60° West 264 feet; thence South 30° East 396 feet; thence North 60° East 264 feet; thence North 30° West 396 feet to the place of beginning, including all of Block 359.

Also begin at the Southeast Corner of Block 363 of said Addition; thence North 30° East 264 feet; thence South 60° West 264 feet; thence South 30° East 264 feet; thence North 60° East 264 feet to the place of beginning, including part of Block 363.

Also begin at the Northeast Corner of Block 355 of said Addition; thence South 60° West 264 feet; thence South 30° East 396 feet; thence North 60° East 264 feet; thence North 30° West 396 feet to the place of beginning, including all of Block 355.

CERTIFICATE OF APPROVAL BY COUNTY BOARD.

This plat was approved on the day of January, 1927.

William H. Andrews
Judge of Probate.
Ira P. Wagner
County Clerk.
George Haid
County Treasurer.