

The land embraced in the annexed plat of subdivision of block 218 Virginia Addition, New Buffalo, Berrien County, Michigan is described as follows: Begin at the northwest corner of said block 218, Virginia Addition, New Buffalo, Berrien County, Michigan; thence North 30° East 396 feet to the place of beginning.

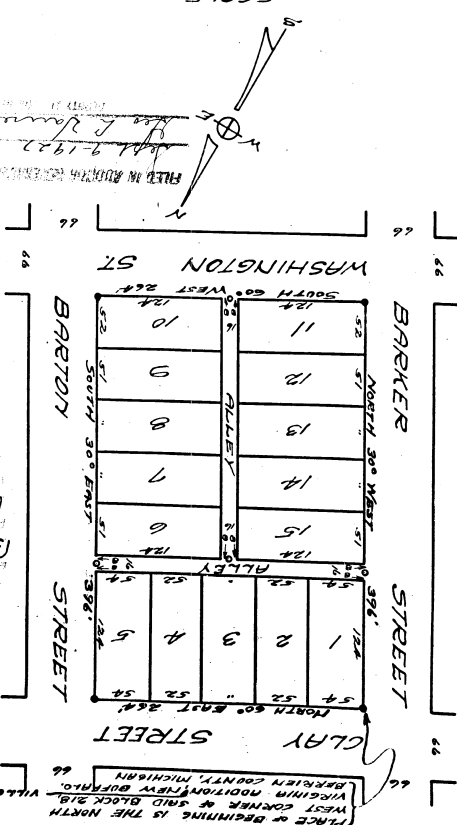
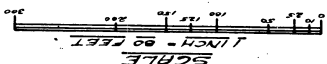
STATE OF MICHIGAN)
 County of Berrien) ss.
 on this 11th day of April, 1927 before me,
 a Notary Public in and for said county, personally came the
 above named Mary A. Krueger, widow, known to me to be the person
 who executed the above dedication, and acknowledged the same to
 her free act and deed.
 My Commission expires.....
 Notary Public, Berrien County, Mich.

Signed and sealed in Presence of

are hereby dedicated to the use of the public.
 MICHIGAN, and that the streets and alleys as shown on said plat
 OF BLOCK 218 VIRGINIA ADDITION, NEW BUFFALO, BERRIEN COUNTY,
 to be surveyed, laid out and platted, to be known as "SUBDIVISION
 OF
 as proprietor, has caused the land embraced in the annexed plat
 KNOWN ALL MEN BY THESE PRESENTS, That I, Mary A. Krueger, widow,
 DO hereby certify that the plat hereon delineated

DEDICATION.

**SUBDIVISION OF
 BLOCK 218
 VIRGINIA ADDITION
 NEW BUFFALO
 BERRIEN COUNTY
 MICHIGAN**



I hereby certify that the plat hereon delineated
 is a correct one and that permanent metal monuments
 of not less than one inch in diameter and fifteen
 inches in length are set in a concrete base at least four
 inches in diameter and forty-eight inches in length
 have been placed at all points marked thus O as
 shown on the plat, at all the intersections of streets
 and alleys, or of streets and alleys, and
 at the intersections of streets and alleys with
 the boundaries of the plat as shown on said plat.
 Registered Civil Engineer.

SURVEYOR'S CERTIFICATE
 I, Wm. A. Krueger,
 County Clerk,
 do hereby certify that the plat hereon delineated
 is a correct one and that permanent metal monuments
 of not less than one inch in diameter and fifteen
 inches in length are set in a concrete base at least four
 inches in diameter and forty-eight inches in length
 have been placed at all points marked thus O as
 shown on the plat, at all the intersections of streets
 and alleys, or of streets and alleys, and
 at the intersections of streets and alleys with
 the boundaries of the plat as shown on said plat.
 County Treasurer.
 This plat was approved on the 23rd day of April, 1927.
 CERTIFICATE OF APPROVAL BY COUNTY BOARD.

Office of County Treasurer, Berrien County.
 Dated April 23rd, 1927.
 I hereby certify that there are no
 tax liens or titles held by the State on the lands
 described hereon, and that there are no
 tax liens or titles held by individuals on said
 lands, for the five years preceding the
 day of April, 1927 and that the
 taxes for said period of five years are
 paid, as shown by the records of this office.
 This certificate does not apply to taxes, if
 any, now in process of collection by township,
 city or village collecting officers.
 County Treasurer.

CERTIFICATE OF MUNICIPAL APPROVAL
 This plat was approved by the Village Council
 of the Village of New Buffalo at a meeting held
 on April 23rd, 1927.
 Village Clerk.
COUNTY TREASURER'S CERTIFICATE
 Office of County Treasurer, Berrien County.
 Dated April 23rd, 1927.
 I hereby certify that there are no
 tax liens or titles held by the State on the lands
 described hereon, and that there are no
 tax liens or titles held by individuals on said
 lands, for the five years preceding the
 day of April, 1927 and that the
 taxes for said period of five years are
 paid, as shown by the records of this office.
 This certificate does not apply to taxes, if
 any, now in process of collection by township,
 city or village collecting officers.
 County Treasurer.

23596

11/12/27

The land embraced in the annexed plat of subdivision of Block 218 Virginia Addition, New Buffalo, Berrien County, Michigan, is described as follows: Begin at the Northwest corner of said Block 218 Virginia Addition, New Buffalo, Berrien County, Michigan; thence North 30° East 396 feet to the place of beginning; thence North 30° East 396 feet to the place of beginning.

DESCRIPTION OF LAND PLATTED

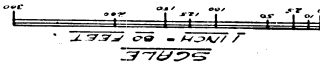
STATE OF MICHIGAN
 County of Berrien) ss.
 On this _____ day of _____, 1927 before me, a Notary Public in and for said county, personally came the above named Mary A. Krueger, widow, known to me to be the person who executed the above dedication, and acknowledged the same to her free act and deed.
 My Commission expires _____
 Notary Public, Berrien County, Mich.

Signed and sealed in presence of _____
 _____ (L.S.)

are hereby dedicated to the use of the public.
 Michigan, and that the streets and alleys as shown on said plat of Block 218 Virginia Addition, New Buffalo, Berrien County, Michigan, to be surveyed, laid out and platted, as is known as subdivision as hereinafter described, has caused the land embraced in the annexed plat to be surveyed, laid out and platted, as is known as subdivision as hereinafter described, that I, Mary A. Krueger, widow,

REVISION

**SUBDIVISION OF
 BLOCK 218
 VIRGINIA ADDITION
 NEW BUFFALO
 BERRIEN COUNTY
 MICHIGAN**

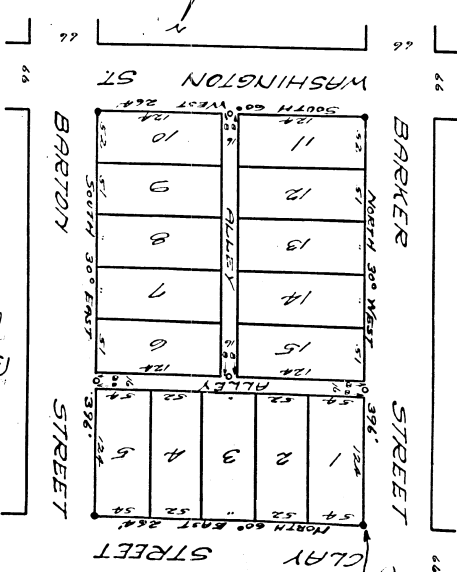


I hereby certify that the plat hereon delineated is a correct one and that permanent metal monuments in length not less than one inch in diameter and fifteen inches in length set in a concrete base at least four feet in diameter and forty feet in length have been placed at all points marked thus on the plat, and that the corners of the lots are marked with iron pins at least one inch in diameter and fifteen inches in length set in a concrete base at least four feet in diameter and forty feet in length. The boundaries of the plat as shown on said plat, and at the intersections of streets and alleys, and at the intersections of alleys, are marked with iron pins at least one inch in diameter and fifteen inches in length set in a concrete base at least four feet in diameter and forty feet in length. The boundaries of the plat as shown on said plat, and at the intersections of streets and alleys, and at the intersections of alleys, are marked with iron pins at least one inch in diameter and fifteen inches in length set in a concrete base at least four feet in diameter and forty feet in length.

Office of County Treasurer, Berrien County, Michigan
 I hereby certify that there are _____ tax liens on titles held by the State of Michigan, and that there are _____ tax liens on titles held by individuals on said _____ for the five years preceding the _____ of this period of five years and that the _____ as shown by the records of this office. This certificate does not apply to taxes, if any, now in process of collection by township, city or village collecting officers.
 _____ County Treasurer

CERTIFICATE OF APPROVAL BY COUNTY BOARD
 This plat was approved on the _____ day of _____, 1927.
 _____ County Treasurer

CERTIFICATE OF MUNICIPAL APPROVAL
 This plat was approved by the Village Council of the Village of New Buffalo at a meeting held _____, 1927.
 _____ Village Clerk



PRICE OF BEGINNING IS THE NORTH WEST CORNER OF SAID BLOCK 218, BERRIEN COUNTY, MICHIGAN

23596

1073
 1077-1927

24973

1073

1073