

The land embraced in the annexed plat of SUBDIVISION OF BLOCK 341 VIRGINIA ADDITION to the Village of New Buffalo, Berrien County Michigan is described as follows: Begin at the Southwest corner of Block 341, Virginia Addition to the Village of New Buffalo, Berrien County, Michigan; thence North 30° West 396 feet; thence North 60° East 64 feet; thence South 30° East 396 feet; thence South 60° West 396 feet to the place of beginning.

DESCRIPTION OF LAND PLATTED.

=====

This plat was approved by the Village Council of the Village of New Buffalo at a meeting held on the 12th day of August, 1927.

County Treasurer: *W.C. Gorman*

Village Clerk: *W.C. Gorman*

This plat was approved on the 12th day of August, 1927.

County Treasurer: *W.C. Gorman*

Judge of Probate: *W.C. Gorman*

County Clerk: *W.C. Gorman*

I hereby certify, that there are no tax liens or titles held by the State on the lands described below, and that there are no tax liens or titles held by the State on the lands described below, and that there are no tax liens or titles held by the State on the lands described below.

Dated: *August 12, 1927*

Office of County Treasurer, Berrien County, Michigan.

Notary Public, Berrien Co., Mich. *W.C. Gorman*

Commission expires: *August 12, 1928*

On this 12th day of August, 1927 before me, a Notary Public in and for said county, personally came the above named George Neuman and Mary Neuman, his wife, and acknowledged the same to me to be the persons who executed the above dedication, and acknowledged the same to be their free act and deed.

COUNTY TREASURER'S CERTIFICATE.

Office of County Treasurer, Berrien County, Michigan.

STATE OF MICHIGAN } ss.

County of Berrien } ss.

I hereby certify that the plat hereon delineated is a correct one and that permanent actual monuments of not less than one inch in diameter and eight inches in length set in a concrete base at least four inches in diameter and forty eight inches in depth have been placed at points marked thus O as shown shown at all angles in the boundaries of the land platted, at all the intersections of streets, intersections of alleys, or of streets and alleys, and at the intersections of the plat with the boundaries of the plat as shown on said plat.

REGISTERED CIVIL ENGINEER

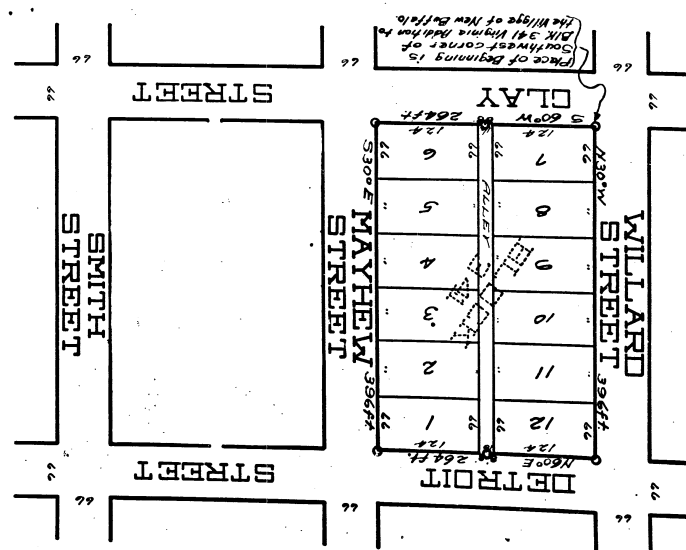
Signed and Sealed in presence of *W.C. Gorman*

on said plat are hereby dedicated to the use of the public.

341 VIRGINIA ADDITION to the Village of New Buffalo, Berrien County Michigan and that the streets as shown on said plat are hereby dedicated to the use of the public.

KNOW ALL MEN BY THESE PRESENTS, That we, George Neuman and Mary Neuman, his wife, as prople- have caused the land embraced in the annexed plat to be surveyed, laid out and platted to be known as SUBDIVISION OF BLOCK 341, VIRGINIA ADDITION to the Village of New Buffalo, Berrien County Michigan and that the streets as shown on said plat are hereby dedicated to the use of the public.

SUBDIVISION - OF - BLOCK - 341
 TO - THE
 VIRGINIA - ADDITION
 OF - NEW - BUFFALO
 BERRIEN - COUNTY
 MICHIGAN



Aug 24 1927

W.C. Gorman

Aug 24 1927

W.C. Gorman

Aug 24 1927

W.C. Gorman

Aug 24 1927

W.C. Gorman

Aug 24 1927

W.C. Gorman

Aug 24 1927

W.C. Gorman

23597

Examined and approved *Aug 24 1927*

2474

The land embraced in the annexed plat of SUBDIVISION OF BLOCK 341 VIRGINIA ADDITION to the Village of New Buffalo, Berrien County Michigan is described as follows: Begin at the southeast corner of Block 341, Virginia Addition to the Village of New Buffalo, Berrien County, Michigan; thence North 30° East 396 feet; thence South 60° West 867 feet to the place of beginning.

DESCRIPTION OF LAND PLATED.

Village Clerk.

This plat was approved by the Village Council of New Buffalo at a meeting held on the 19th day of August, 1927.

CERTIFICATE OF MUNICIPAL APPROVAL.

County Treasurer.

I hereby certify that there are no taxes or liens on titles held by the State on the lands described above, and that there are no tax liens or states held by individuals on said lands, for the five years preceding the date of this plat, and that the taxes for said period of five years are paid as shown by the records of this office. This certificate does not apply to taxes, if any, now in process of collection by township, city or village collecting officers.

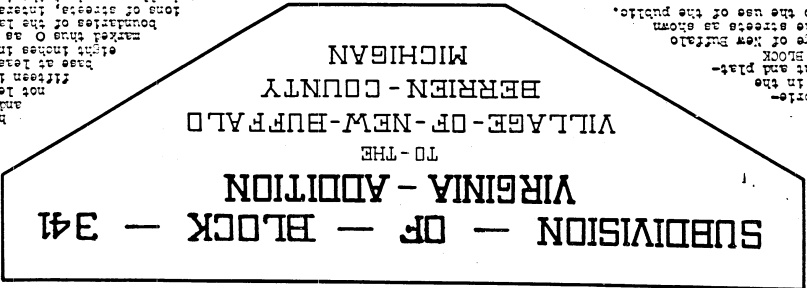
Office of County Treasurer, Berrien County, Michigan, August 19, 1927.

COUNTY TREASURER'S CERTIFICATE.

Registered Civil Engineer.

I hereby certify that the plat hereon delineated is a correct one and that permanent metal monuments of not less than one inch diameter and fifteen inches in length set in a concrete base at least four inches in diameter and forty eight inches in depth have been placed at points marked thus O as thereon shown at all angles in the boundaries of the land platted, at all the intersections of streets, alleys and ways, and at the intersections of streets and alleys with the boundaries of the plat as shown on said plat.

SURVEYOR'S CERTIFICATE.



This plat was approved on the 19th day of August, 1927.

CERTIFICATE OF APPROVAL BY COUNTY BOARD.

My Commission expires.....

On this 19th day of August, 1927 before me, a Notary Public in and for said county, personally came George Newman and Mary Newman, his wife, and acknowledged the same to be the true and legal act and deed of the persons who executed the above dedication, and acknowledged the same to be the true and legal act and deed of the persons who executed the above dedication, and acknowledged the same to be the true and legal act and deed of the persons who executed the above dedication.

Notary Public, Berrien County, Michigan.

KNOW ALL MEN BY THESE PRESENTS, that we, George Newman and Mary Newman, his wife, as parties annexed, have caused the land embraced in the above plat to be surveyed, laid out and platted to be known as SUBDIVISION OF BLOCK 341, VIRGINIA ADDITION TO THE VILLAGE OF NEW BUFFALO BERRIEN COUNTY MICHIGAN and that the streets shown on said plat are hereby dedicated to the use of the public.

DEEDITION.

Handwritten notes and signatures on the right side of the page, including a scale bar (1 inch = 100 feet) and various dates and names like 'Aug 24/1927', 'George Newman', and 'Mary Newman'. There are also some illegible signatures and dates.

23597

Handwritten notes and signatures at the bottom left, including 'Aug 22-1927' and 'George Newman'.