

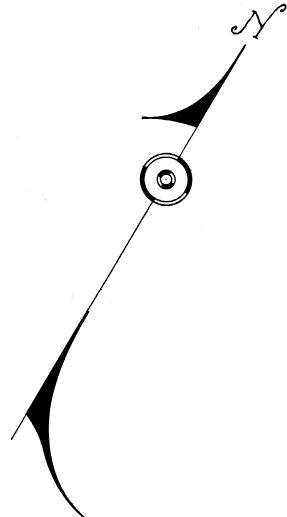
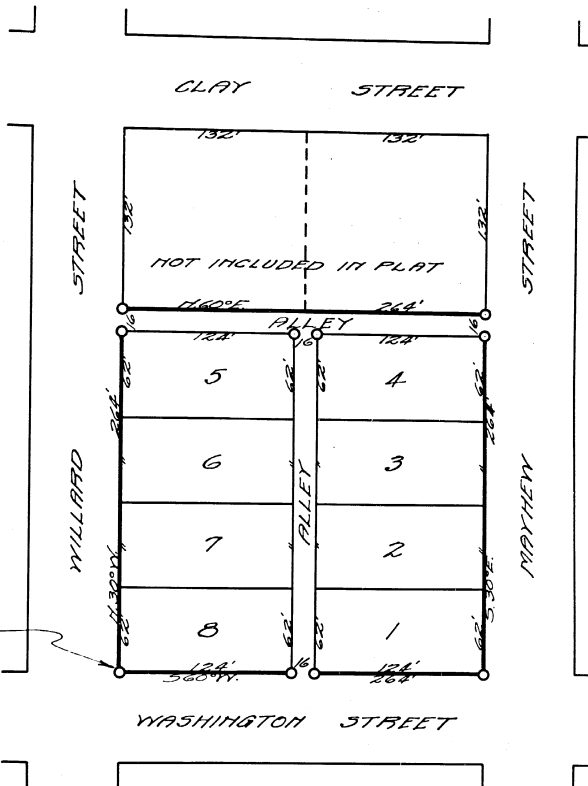
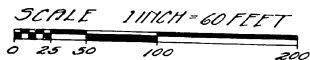
Oct 24-1929  
J. S. Hume

64 OK  
0/23/24  
Berrien  
Subdivision of part of  
Block 221 Virginia  
25"  
3rd 27 9  
8 Plate  
72  
Don R. Rear

# SUBDIVISION OF PART OF BLOCK 221 VIRGINIA ADDITION" TO THE VILLAGE OF NEW BUFFALO BERRIEN COUNTY, MICHIGAN.

Oct 24-1929  
J. S. Hume

Oct 28-1929  
J. S. Hume



Place of Beginning is  
Southwest corner of  
Blk 221, Virginia Addition  
to Village of New Buffalo.

**DESCRIPTION**

The land embraced in the annexed plat is described as follows: Begin at the Southwest corner of Block 221 of Virginia Addition to the Village of New Buffalo, Berrien County, Michigan; Thence N. 30° W. 264 feet; Thence N. 60° E. 264 feet; Thence S 30° E. 264 feet; Thence S 60° W. 264 feet to the place of Beginning.

**COUNTY TREASURER'S CERTIFICATE**

OFFICE OF COUNTY TREASURER OF BERRIEN COUNTY  
St. Joseph, Michigan - This 24 DAY OF SEPT. 1929  
I hereby certify that there are no tax liens or titles held by the State on the lands described above and that there are no tax liens or titles held by individuals on said lands for the five years preceding the 24th day of July, 1929, and that the taxes for said period of five years are paid as shown by the records of this office.  
This certificate does not apply to taxes, if any, now in process of collection by township, city or village collecting officers.

Kittie H. Fuller  
County Treasurer.

**SURVEYOR'S CERTIFICATE**

I hereby certify that the plat herein delineated is a correct one and that permanent metal monuments of not less than one inch in diameter and fifteen inches in length set in a concrete base not less than four inches in diameter and forty eight inches in depth have been placed at all points marked thus as shown, at all the angles in the boundaries of the land platted and at all the intersections of streets as shown on said plat.

James Hampton  
Reg. Civil Engineer.

**DEDICATION**

KNOW ALL MEN BY THESE PRESENTS: That I, Rosa Muscia, a widow, as proprietor have caused the land embraced in the annexed plat to be surveyed, laid out and platted to be known as "SUBDIVISION OF PART OF BLOCK 221-VIRGINIA ADDITION" TO THE VILLAGE OF NEW BUFFALO-BERRIEN COUNTY-MICHIGAN and that the alleys as shown on said plat are hereby dedicated to the use of the public.

Signed and Sealed  
in the Presence of  
J. E. Ferrara  
John Cole

Rosa Muscia (Seal)

STATE OF MICHIGAN } 55  
COUNTY OF BERRIEN }

On this 24th day of July 1929 before me, a Notary Public in and for said County, personally appeared the above named Rosa Muscia, known to me to be the person who executed the above dedication and acknowledged the same to be her free act and deed.

Albert Wing  
Notary Public.

My Commission expires March 28, 1930.

**CERTIFICATE OF MUNICIPAL APPROVAL**

This plat was approved by the Village Council of the Village of New Buffalo on the 16th day of Sept. 1929.

Charles V. O'Conner  
Village Clerk.

**CERTIFICATE OF APPROVAL BY COUNTY BOARD**

This plat was approved by the County Board of Examiners of Berrien County this 24th day of Sept. 1929.

William H. Andrews - Judge of Probate  
Benjamin H. Bittner - County Clerk.  
Kittie H. Fuller - County Treasurer.