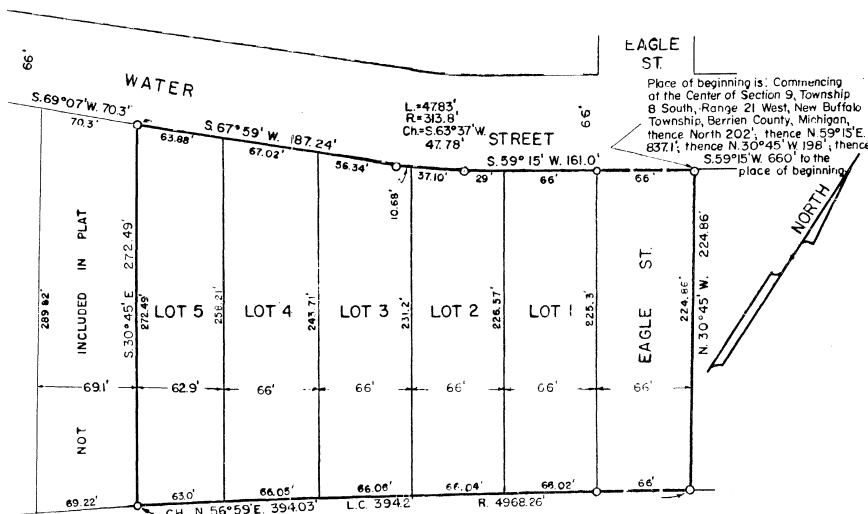


# "SUNSET SHORES NO. 4"

BEING A SUBDIVISION IN PART OF SECTION 9, TOWNSHIP 8 SOUTH, RANGE 21 WEST, IN THE VILLAGE OF NEW BUFFALO, BERRIEN COUNTY, MICHIGAN.

Scale 1" = 60'



NOTE: All Dimensions are in feet or decimals thereof.

### DEDICATION

KNOW ALL MEN BY THESE PRESENTS, That we, PETER M. KERHULAS and BERTHA KERHULAS, husband and wife, as proprietors, have caused the land embraced in the annexed plat to be surveyed, laid out, and platted, to be known as "SUNSET SHORES NO. 4", being a subdivision in part of Section 9, Township 8 South, Range 21 West in the Village of New Buffalo, Berrien County, Michigan, and that the streets as shown on said plat are hereby dedicated to the use of the public.

*Peter M. Kerhulas* *Bertha Kerhulas*  
PETER M. KERHULAS BERTHA KERHULAS

Signed and sealed in the presence of:

*Raymond E. Padgett* *Howard Van Hartesvelt*  
RAYMOND E. PADGETT HOWARD VAN HARTESVELT

State of Michigan), ss  
County of Berrien)

On this 11th day of September, 1958, before me Notary Public in and for said County, personally came the above named PETER M. KERHULAS and BERTHA KERHULAS, husband and wife, known to me to be the persons who executed the above dedication and acknowledged the same to be their free act and deed.

*Raymond E. Padgett*  
RAYMOND E. PADGETT

My Commission Expires April, 28, 1961  
Notary Public, Berrien County, Michigan

### DESCRIPTION

The land embraced in the annexed plat of "SUNSET SHORES NO. 4" being a subdivision in part of Section 9, Township 8 South, Range 21 West, in the Village of New Buffalo, Berrien County, Michigan, is described as follows: Commencing at the Center of Section 9, Township 8 South, Range 21 West, New Buffalo Township, Berrien County, Michigan; thence North 202 ft, thence N. 59° 15' E. 837.10 ft, thence N. 30° 45' W. 198.0 ft, thence S. 59° 15' W. 660.0 ft, to the place of beginning; thence S. 59° 15' W. 161.0 ft, thence around a 313.8 foot radius curve to the right a chord distance of S. 63° 37' W. 47.78 ft, thence S. 67° 59' W. 187.24 ft, thence S. 30° 45' E. 272.49 ft, thence around a 4968.26 ft radius curve to the right a chord distance of N. 56° 59' E. 394.03 ft, thence N. 30° 45' W. 224.86 ft to the place of beginning. Containing 5 lots.

### TREASURER'S CERTIFICATE

Office of the County Treasurer, Berrien County, Michigan.  
I hereby certify that there are no tax liens or titles held by the State on the land described hereon, and that there are no tax liens or titles held by individuals on said land for the five years preceding the 11th day of September, 1959, and that taxes for said period of five years are paid as shown by the records of this office.

This certificate does not apply to taxes, if any, now in the process of collection by the Township, City, or Village collecting officers.

*Wm. H. Bartz*  
Wm. H. BARTZ, COUNTY TREASURER.

### CERTIFICATE OF MUNICIPAL APPROVAL

This Plat was approved by the Village Board of the Village of New Buffalo, at a meeting on September 11, 1958, 1959.

*Burnette Nichols*  
BURNETTE NICHOLS Village Clerk.

### CERTIFICATE OF APPROVAL BY COUNTY BOARD

This Plat was approved on the 4th day of March, 1959.

*Catherine Weber* *Frank X. Duerr Jr.* *Wm. H. Bartz* *Hazen Harnier*  
CATHERINE WEBER FRANK X. DUERR JR. Wm. H. BARTZ HAZEN HARNIER  
Register of Deeds County Clerk County Treasurer Drain Commissioner

### SURVEYOR'S CERTIFICATE

I hereby certify that the plat hereon delineated is a correct one and that permanent metal monuments consisting of bars not less than one-half inch in diameter and 36 inches in length, or shorter bars of not less than one-half inch in diameter lapped over each other at least six inches with an overall length of not less than 36 inches encased in a concrete cylinder at least 4 inches in diameter and 36 inches in depth have been placed at points marked thus "O", as there on shown at all angles in the boundaries of the land platted, at all the intersections of streets, intersections of alleys, or of streets and alleys, and at the intersections of streets and alleys with the boundaries of the plat as shown on said plat.

*G. L. Wightman*  
G. L. WIGHTMAN, REG. C. E. N° 5289

COPY  
Register's Office  
Berrien County, Michigan

Filed  
*Catherine Weber*  
Recorded this 12th day of March, A.D. 1959  
M. in Liber 1959-12  
on Page 31  
*Catherine Weber*  
Register of Deeds

I hereby certify this copy is a true copy of said plat forwarded the Register at cause for recording.  
Date March 9, 1959  
FILED IN AUDITOR GENERAL'S DEPT.  
Date March 12, 1959  
EXAMINED AND APPROVED  
Date March 7, 1959  
*Frank X. Duerr Jr.*  
Auditor General  
*D. C. Hays*  
Notary Public