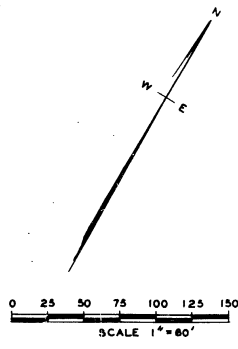


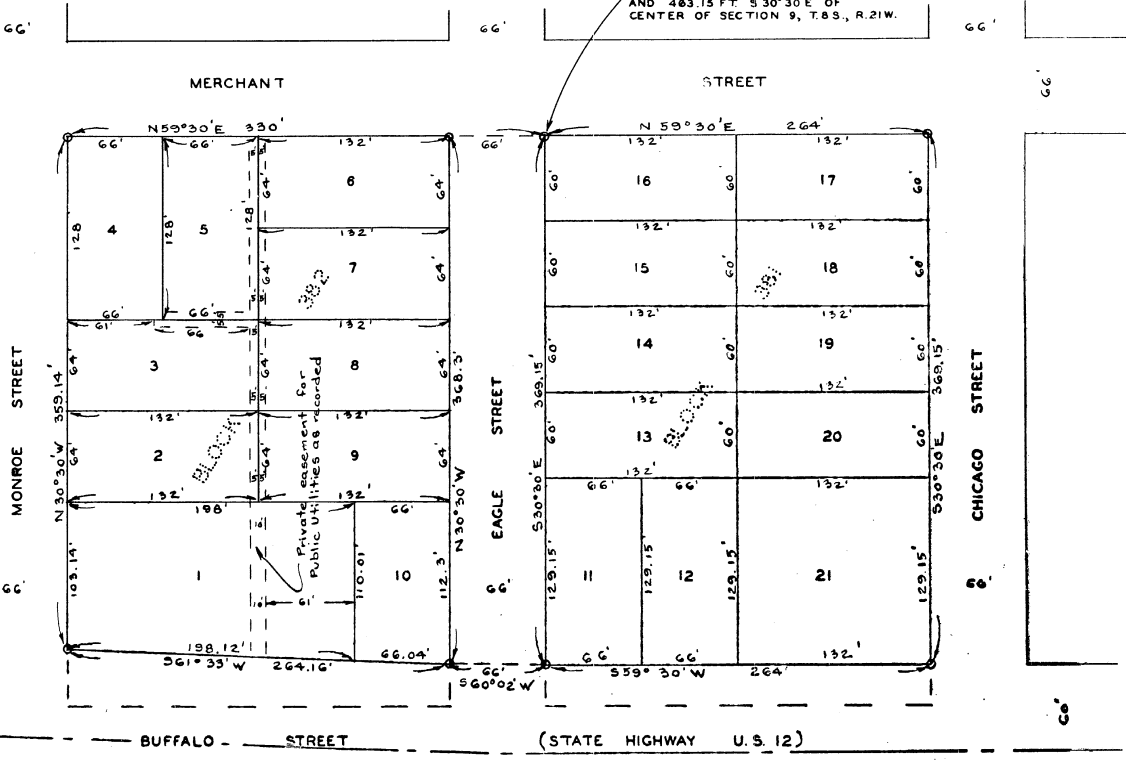
ASSESSORS PLAT OF SLECHTA SUBDIVISION OF
PART OF BLOCKS 381 AND 382, VIRGINIA ADDITION
PART OF SECTION 9, T. 8 S., R. 21 W.
VILLAGE OF NEW BUFFALO
BERRIEN COUNTY, MICHIGAN

45474

PLACE OF BEGINNING:
70 FT. SOUTH, 315.7 FT. N 59°30'E
AND 463.15 FT. S 30°30'E OF
CENTER OF SECTION 9, T. 8 S., R. 21 W.



COPY
Register's Office
Berrien County, Mich. S.S.
Plat of Assessors Plat
of Slechta Subdivision
was recorded on the 13th day of
March A.D. 1963 at 2:40 o'clock
A.M. in Liber 19 of plats
on Page 14
Beatrice Tiefenbach
Notary Public



Notes:
All dimensions are
given in feet and
decimals thereof

March 12, 1963
March 18, 1963
March 12, 1963
Richard E. Lemp

APPROVAL BY COUNTY BOARD

This plat was approved on the 14th day of
February 1963 by the Berrien County Plat
Board.

Beatrice Tiefenbach Beatrice Tiefenbach
Register of Deeds
Frank X. Duerr, Jr. Frank X. Duerr, Jr.
County Clerk
Wm. H. Bartz _____
County Treasurer
Hazen Harner Hazen Harner
County Drain Commissioner

CERTIFICATE OF MUNICIPAL APPROVAL

This plat was approved by the Common Council of the
Village of New Buffalo at a meeting held the 1st
day of February 1963, and is in compliance with Section
19a and that the width of lots conform with the re-
quirements of Section 30, Act 172 of Public Acts of 1929,
as amended.

Burnette Nichols Burnette Nichols
Village Clerk

SURVEYOR'S CERTIFICATE

I hereby certify that the plat hereon delineated is a
Correct one and that permanent metal monuments
consisting of bare not less than one-half inch in di-
ameter and 36 inches in length, encased in a concrete
cylinder at least 4 inches in diameter and 36 inches in
depth have been placed at points marked thus (O) as
thereon shown at all angles in the boundaries of the
land platted, at all the intersections of streets,
intersections of alleys, or of streets and alleys, and
at the intersection of streets and alleys with the
boundaries of the plat as shown on said plat.

H.L. Dreher H.L. Dreher
Registered Civil Engineer No. 3297

DEDICATION

KNOW ALL MEN BY THESE PRESENTS, That I, Raymond
E. Fadgett, Assessor of the Village of New Buffalo,
Buffalo of Berrien County, State of Michigan, by virtue
of authority in me vested by Section 51, Act 172 of 1929,
having been duly authorized by the Village Council, have
caused the land described in the annexed plat to be sur-
veyed, laid out and platted to be known as "ASSESSORS
PLAT OF SLECHTA SUBDIVISION OF PART OF BLOCKS 381 AND
382, VIRGINIA ADDITION", Part of Section 9, T. 8 S., R. 21 W.,
Village of New Buffalo, Berrien County, Michigan and that
the public streets as shown on said plat are now being
used for such purposes and that the plat conforms with
the requirements of Section 51, Act 172, of Public Acts of 1929,
as amended. Private easements as shown on said plat are
hereby reserved for installation and maintenance of public
utilities and no permanent structures are to be located
within said easements.

Raymond E. Fadgett Raymond E. Fadgett
Assessor of Village of New Buffalo
Witnesses:
John Brejcha John Brejcha
Michael T. Kerhoulas Michael T. Kerhoulas

STATE OF MICHIGAN
County of Berrien
On this 30th day of January 1963, before me a Notary
Public in and for said County, personally came the above
named Raymond E. Fadgett, Assessor of the Village
of New Buffalo, known to me to be the person who executed
the above dedication and acknowledged the same to be his
free act and deed.
Michael T. Kerhoulas Michael T. Kerhoulas
Notary Public in and for Berrien County
My Commission expires December 31, 1964

CERTIFICATE AS TO STATE TRUNK
LINE OR FEDERAL AID ROADS

We hereby certify that said plat appears to include land
located on a state trunk line or federal aid road.
County Plat Board
Beatrice Tiefenbach Beatrice Tiefenbach
Frank X. Duerr, Jr. Frank X. Duerr, Jr.
Wm. H. Bartz _____
Hazen Harner Hazen Harner

DESCRIPTION OF LAND PLATTED

The land embraced in the annexed plat of "ASSESSORS PLAT
OF SLECHTA SUBDIVISION OF PART OF BLOCKS 381 AND 382,
VIRGINIA ADDITION", Part of Section 9, T. 8 S., R. 21 W., Village of
New Buffalo, Berrien County, Michigan is described as follows:
Commencing 70 ft. South, 315.7 ft. N 59°30'E and 463.15 ft.
S 30°30'E of Center of Section 9, T. 8 S., R. 21 W., thence N 59°30'E
264 feet, thence S 30°30'E 369.15 feet, thence S 59°30'W 264
feet, thence S 60°02'W 66 feet, thence S 61°33'W 264.16 feet,
thence N 30°30'W 359.14 feet, thence N 59°30'E 330 feet
to the place of beginning, containing 21 lots.

APPROVED 3-9-63
DATE
AS TO ACQUIRED RIGHT-OF-WAY ONLY
John C. Mackie
JOHN C. MACKIE
STATE HIGHWAY COMMISSIONER

COPY