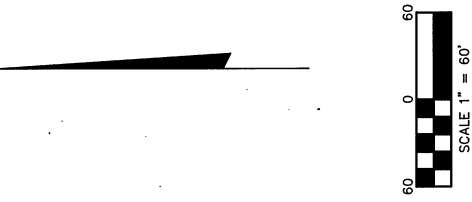


SPECIAL MEANDER CORNER
 AND CORNER RECORDATION
 CERTIFICATE L. 6, P. 122

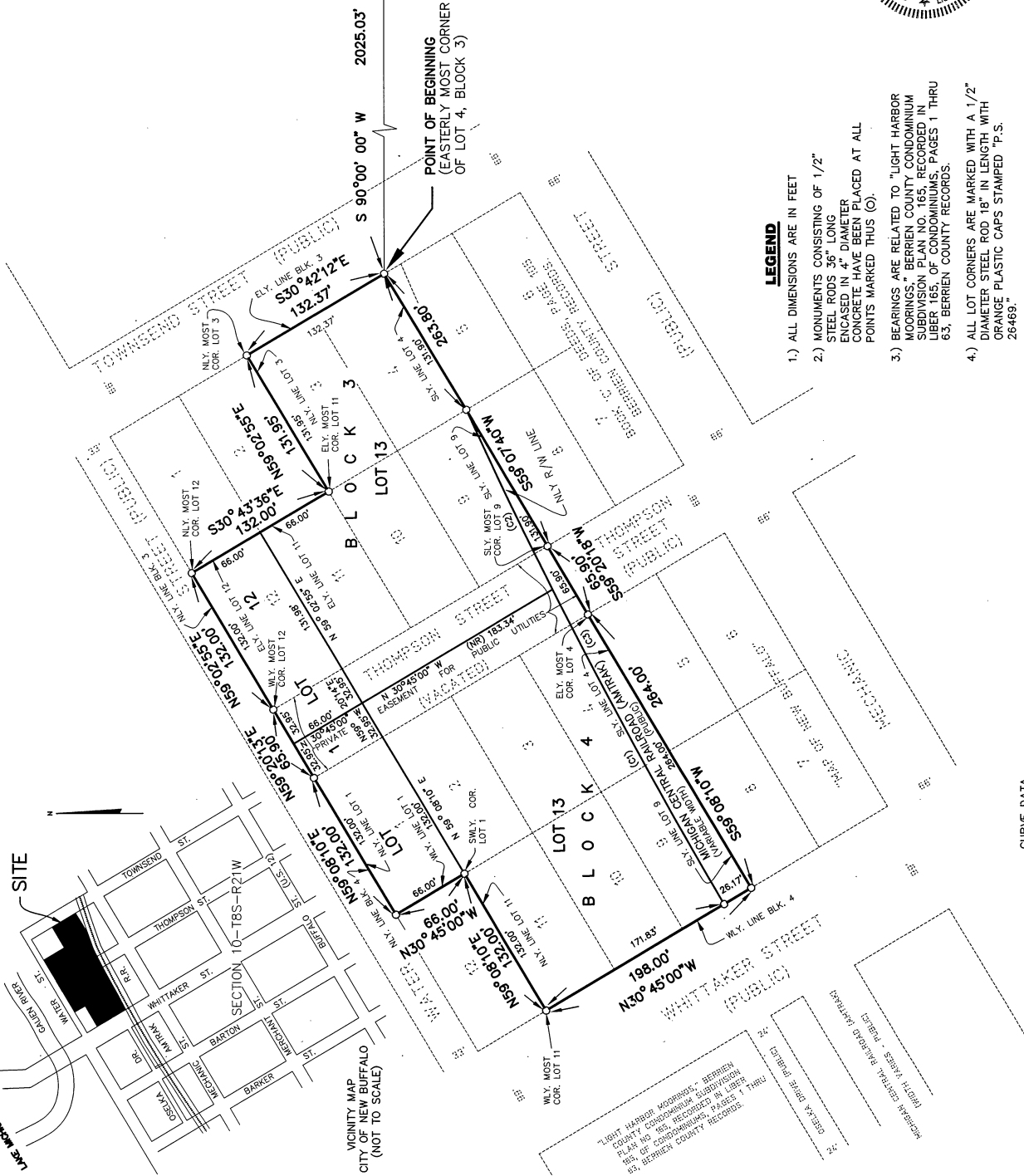


573.67' S 00° 17' 23" W
 2039.29' S 00° 17' 23" W

NORTH & SOUTH 1/4 LINE, F.R.L. SEC. 10-8-21

CENTER OF
 F.R.L. SEC. 10, T. 8 S., R. 21 W.
 LAND CORNER RECORDATION
 CERTIFICATE L. 6, P. 02

"AMENDED PLAT OF LOTS 3, 4, 9, 10, 11 AND 12, BLOCK 3 AND LOTS 1, 2, 3, 4, 9, 10 AND 11, BLOCK 4, AND VACATED PORTION OF THOMPSON STREET, MAP OF NEW BUFFALO,"
 THE VILLAGE (NOW CITY) OF NEW BUFFALO IS SITUATED IN SECTIONS 9 AND 10 IN TOWN 8 SOUTH, RANGE 21 WEST AT THE MOUTH OF THE GALIEN RIVER, BERRIEN COUNTY, MICHIGAN.



POINT OF BEGINNING
 (EASTERLY MOST CORNER
 OF LOT 4, BLOCK 3)

LEGEND

- 1.) ALL DIMENSIONS ARE IN FEET
- 2.) MONUMENTS CONSISTING OF 1/2" STEEL RODS 36" LONG ENCASED IN 4" DIAMETER CONCRETE HAVE BEEN PLACED AT ALL POINTS MARKED THUS (O).
- 3.) BEARINGS ARE RELATED TO "LIGHT HARBOR MOORINGS," BERRIEN COUNTY CONDOMINIUM SUBDIVISION PLAN NO. 65, AS RECORDED IN THE PUBLIC RECORDS, PAGES 1 THRU 65, BERRIEN COUNTY RECORDS.
- 4.) ALL LOT CORNERS ARE MARKED WITH A 1/2" DIAMETER STEEL ROD 18" IN LENGTH WITH ORANGE PLASTIC CAPS STAMPED "P.S. 26469."

(R) = RADIAL LINE, (NR) = NONRADIAL LINE

CURVE DATA

NUMBER	DELTA	TANGENT	RADIUS	LENGTH	BEARING	CHORD
C1	02°03'19"	82.715	4813.19	265.49	S24°15'05" W	265.49
C2	05°24'48"	1231.54	4813.19	462.70	S62°24'20" W	1021.50



John G. Kamer
 JOHN G. KAMER P.S. 27449

V.J. Strebs
 V.J. STREBS P.S. 26469

67783

