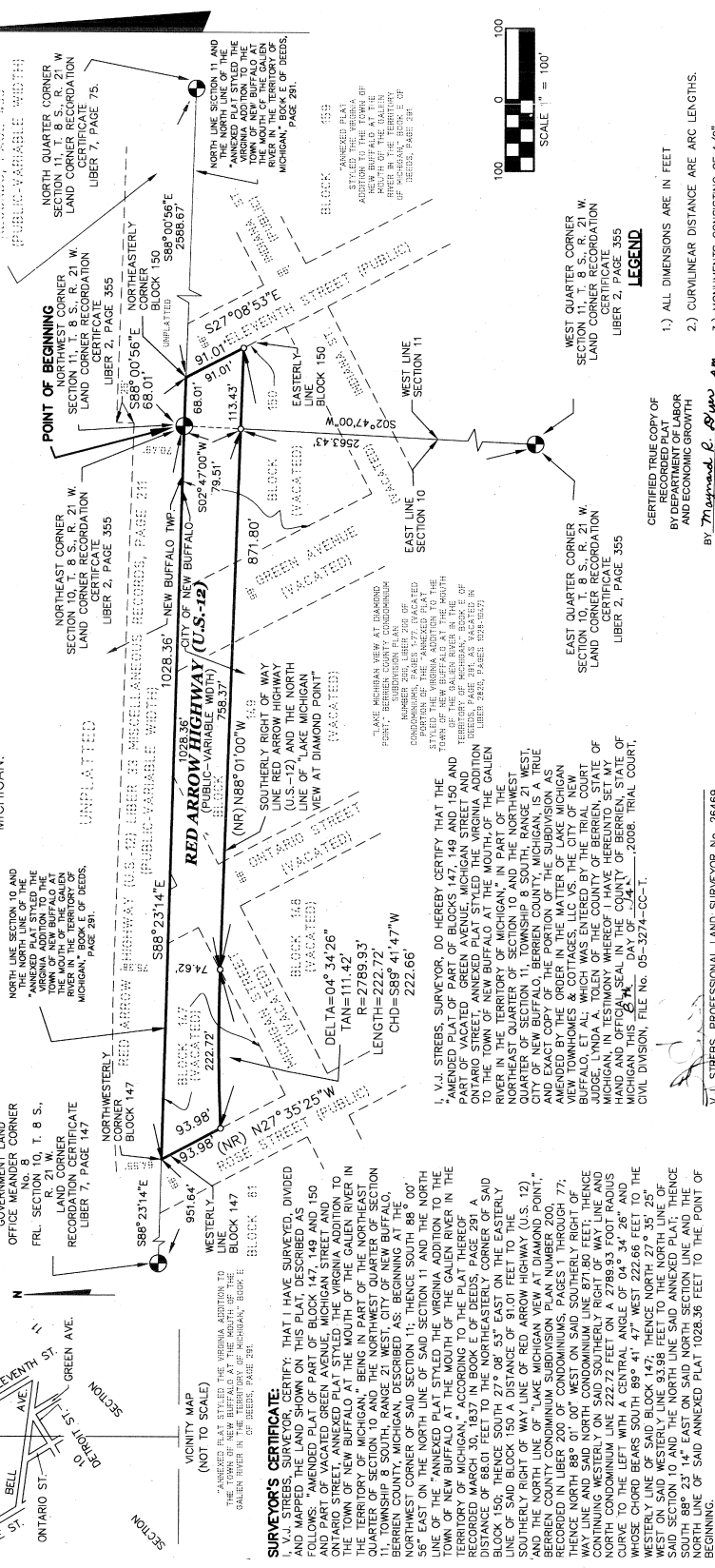


"AMENDED PLAT OF PART OF BLOCK 147, 149 AND 150 AND PART OF VACATED GREEN AVENUE, MICHIGAN STREET AND ONTARIO STREET, ANNEXED PLAT STYLED THE VIRGINIA ADDITION TO THE TOWN OF NEW BUFFALO AT THE MOUTH OF THE GALLEN RIVER IN THE TERRITORY OF MICHIGAN,"

IN PART OF THE NORTHEAST QUARTER OF SECTION 10 AND THE NORTHWEST QUARTER OF SECTION 11, TOWNSHIP 8 SOUTH, RANGE 21 WEST, CITY OF NEW BUFFALO, BERRIEN COUNTY, MICHIGAN.



SURVEYOR'S CERTIFICATE:
 THAT I, V.J. STREBS, SURVEYOR, DO HEREBY CERTIFY THAT THE "AMENDED PLAT STYLED THE VIRGINIA ADDITION TO THE TOWN OF NEW BUFFALO AT THE MOUTH OF THE GALLEN RIVER IN THE TERRITORY OF MICHIGAN," BOOK E OF DEEDS, PAGE 291, AND MAPS SHOWING THE NORTH LINE OF SAID SECTION 11 AND THE NORTH LINE OF SAID SECTION 10, THE WEST LINE OF SAID SECTION 10, THE WEST LINE OF SAID SECTION 11, THE EAST LINE OF SAID SECTION 10, THE EAST LINE OF SAID SECTION 11, THE SOUTHERLY RIGHT OF WAY LINE OF RED ARROW HIGHWAY (U.S. 12) AND THE NORTH LINE OF "LAKE MICHIGAN VIEW AT DIAMOND POINT," BERRIEN COUNTY CONDOMINIUM SUBDIVISION PLAN NUMBER 200, RECORDED IN LIBER 200 OF CONDOMINIUMS, PAGES 11 THROUGH 77, WAY LINE AND SAID NORTH CONDOMINIUM LINE 871.80 FEET, THENCE CONTINUING WESTERLY ON SAID SOUTHERLY RIGHT OF WAY LINE AND NORTH CONDOMINIUM LINE 222.72 FEET ON A 2789.93 FOOT RADIUS CURVE TO THE LEFT WITH A CENTRAL ANGLE OF 04° 34' 26" AND WESTERLY LINE 88° 00' 00" 147", THENCE N08° 01' 00" 149" WEST ON SAID WESTERLY LINE 93.98 FEET TO THE NORTH LINE OF SAID SECTION 10 AND THE NORTH LINE SAID ANNEXED PLAT; THENCE SOUTH 88° 23' 14" EAST ON SAID NORTH SECTION LINE AND THE SOUTH LINE OF SAID ANNEXED PLAT 1028.36 FEET TO THE POINT OF BEGINNING.

LEGEND
 1.) ALL DIMENSIONS ARE IN FEET
 2.) CURVILINEAR DISTANCE ARE ARC LENGTHS.
 3.) MONUMENTS CONSISTING OF 1/2" STEEL RODS 36" LONG ENCASED IN ASBESTOS PIPE POINTS MARKED THUS (O).
 4.) BEARINGS ARE RELATED TO THE MICHIGAN DEPARTMENT OF TRANSPORTATION HIGHWAY PLANS CONTROLLED BY THE MICHIGAN DEPARTMENT OF TRANSPORTATION, CONTROL SHEET NUMBERS 107 AND 108, LAST REVISION JANUARY 8, 2001.
 (R) = RADIAL LINE, (NR) = NONRADIAL LINE

RECORDING CERTIFICATE
 STATE OF MICHIGAN
 BERRIEN COUNTY
 THIS PLAT WAS RECEIVED FOR RECORD ON THE 28th DAY OF February, 2008, AT 11:51 A.M. AND RECORDED IN LIBER 271 OF PLATS ON PAGE 19

BY *V.J. Strebs*
 V.J. STREBS, PROFESSIONAL LAND SURVEYOR No. 26469
 DATE 3-11-2009

BY *Lori D. Jarvis*
 LORI D. JARVIS, REGISTER OF DEEDS

BY *M. Louise Stine*
 M. LOUISE STINE, CLERK OF THE COUNTY OF BERRIEN, DO HEREBY CERTIFY THAT THE "AMENDED PLAT OF PART OF BLOCKS 147, 149 AND 150 AND PART OF VACATED GREEN AVENUE, MICHIGAN STREET AND ONTARIO STREET, ANNEXED PLAT STYLED THE VIRGINIA ADDITION TO THE TOWN OF NEW BUFFALO AT THE MOUTH OF THE GALLEN RIVER IN THE TERRITORY OF MICHIGAN," IN PART OF THE NORTHEAST QUARTER OF SECTION 10 AND THE NORTHWEST QUARTER OF SECTION 11, TOWNSHIP 8 SOUTH, RANGE 21 WEST, CITY OF NEW BUFFALO, BERRIEN COUNTY, MICHIGAN, IS A TRUE AND EXACT COPY OF THE MATTER OF THE SUBDIVISION AS AMENDED BY THE ORDER IN THE MATTER OF LAKE MICHIGAN VIEW TOWNHOMES & COTTAGES, LLC VS. TRIAL COURT NORTHERN DISTRICT OF THE COUNTY OF BERRIEN, STATE OF MICHIGAN, IN TESTIMONY WHEREOF I HAVE HERETO SET MY HAND AND OFFICIAL SEAL IN THE COUNTY OF BERRIEN, STATE OF MICHIGAN, THIS 27th DAY OF March, 2008. TRIAL COURT, CIVIL DIVISION, FILE NO. 05-3274-CC-1.

88193