

LEGEND

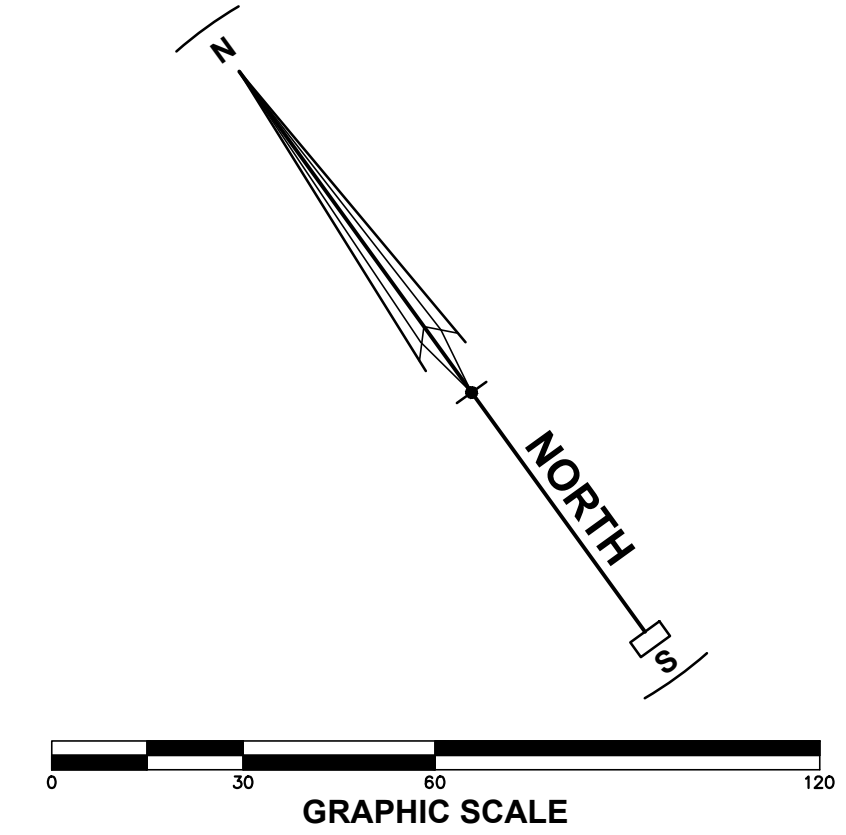
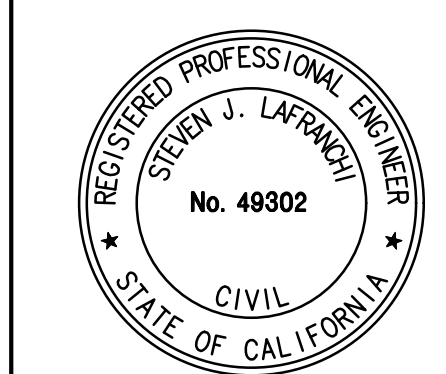
EXISTING	PROPOSED	DESCRIPTION
[Symbol]	[Symbol]	TOE/TOP OF SLOPE
[Symbol]	[Symbol]	FENCE
[Symbol]	[Symbol]	EXTERIOR PROPERTY LINE
[Symbol]	[Symbol]	LOT LINE
[Symbol]	[Symbol]	CONCRETE
[Symbol]	[Symbol]	CURB & GUTTER
[Symbol]	[Symbol]	ASPHALT CONCRETE
[Symbol]	[Symbol]	STORM DRAIN
[Symbol]	[Symbol]	STORM DRAIN MANHOLE
[Symbol]	[Symbol]	DROP INLET/TURNING STRUCTURE
[Symbol]	[Symbol]	WATER LINE
[Symbol]	[Symbol]	JOINT TRENCH
[Symbol]	[Symbol]	SANITARY SEWER MANHOLE
[Symbol]	[Symbol]	CATCH BASIN
[Symbol]	[Symbol]	WATER METER
[Symbol]	[Symbol]	DOUBLE CHECK VALVE
[Symbol]	[Symbol]	CANOPY (SEE ARBORIST REPORT DATED JULY 26, 2022 FOR TREE INFORMATION)
[Symbol]	[Symbol]	TREE TO BE REMOVED
[Symbol]	[Symbol]	BASIN AREA (BASMAA TREATMENT)
[Symbol]	[Symbol]	50FT SETBACK FROM TOP OF BANK
[Symbol]	[Symbol]	APPROXIMATE TOP OF BANK FOR ADOBE CREEK
[Symbol]	[Symbol]	APPROXIMATE CHW PER MONTROSE BIOLOGICAL SURVEY
[Symbol]	[Symbol]	RIPARIAN CORRIDOR (SEE EXISTING CONDITIONS EXHIBIT FOR INFORMATION)
[Symbol]	[Symbol]	OVERLAND FLOW ROUTING, SEE UTILITY PLAN FOR OVERVIEW OF STORM DRAIN SYSTEM
[Symbol]	[Symbol]	FEMA FLOOD PLAIN EFFECTIVE SEPTEMBER 25, 2023 PER CDMR PERFORMED BY BALANCE HYDROLOGICS
[Symbol]	[Symbol]	SEE FOCUSED PLAN AND PROFILE LAYOUT FOR PROPOSED BRIDGE CROSSING ADOBE CREEK SHEET C-12 FOR ADDITIONAL DETAIL
[Symbol]	[Symbol]	UP TO 5FT RETAINING WALL AT EASTERLY LIMITS OF BUILDING PADS ADJACENT TO NORTHERN BIORETENTION BASIN AREAS
[Symbol]	[Symbol]	FLOOD PLAIN PER MODELING BY WEST CONSULTANTS JULY 2023
[Symbol]	[Symbol]	LIMIT OF RIPARIAN HABITAT BIOLOGICAL STUDY AREA BY MONTROSE
[Symbol]	[Symbol]	APPROXIMATE BOUNDARY OF RIPARIAN HABITAT, BY MONTROSE
[Symbol]	[Symbol]	MAJOR FILL CONTOUR - 1.0' INTERVAL
[Symbol]	[Symbol]	MINOR FILL CONTOUR - 0.2' INTERVAL
[Symbol]	[Symbol]	MAJOR CUT CONTOUR - 1.0' INTERVAL
[Symbol]	[Symbol]	MINOR CUT CONTOUR - 0.2' INTERVAL
[Symbol]	[Symbol]	ZERO CUT/FILL CONTOUR

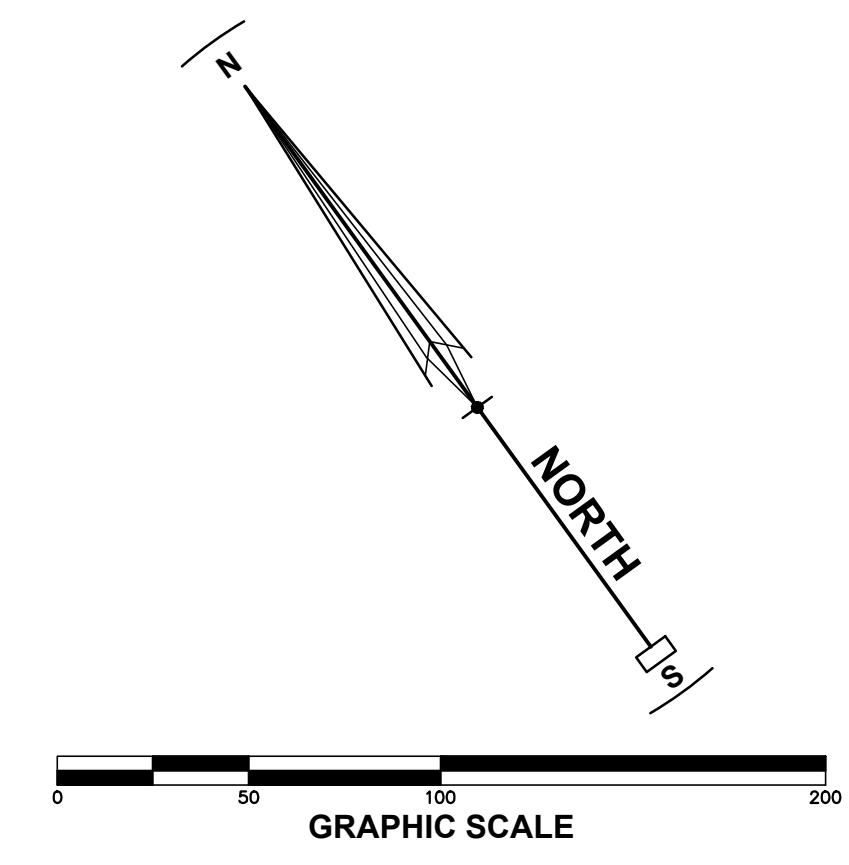
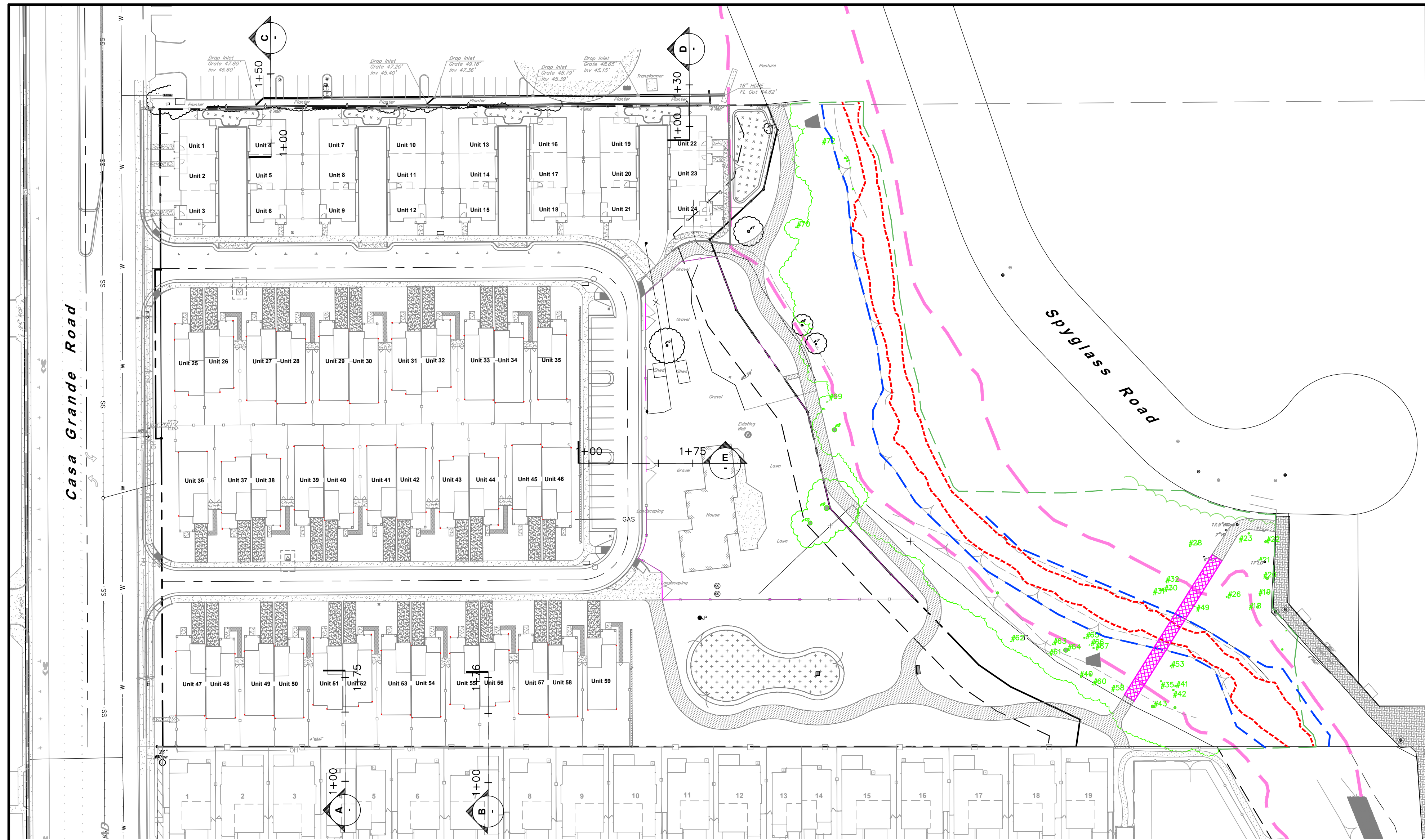
REVISIONS BY	DATE	DESCRIPTION

CUT AND FILL PLAN
CREEKWOOD CONDOMINIUM PROJECT
270 & 280 CASA GRANDE ROAD APN 017-040-051 & -016
PETALUMA CALIFORNIA

STEVEN J. LAFRANCHI & ASSOCIATES, INC.
 CIVIL ENGINEERS - LAND SURVEYORS
 LAND PLANNERS - LANDSCAPE ARCHITECTS
 140 SECOND STREET, SUITE 312
 PETALUMA, CALIFORNIA 94952
 (707) 762-3122 FAX (707) 762-3239

DATE: 2023.12.20
 SCALE: 1" = 30'
 DESIGN: S.J.L./C.A.J.
 DRAWN: GRK
 CHECK: S.J.L.
 JOB: CREEKWOOD
 JOB No: 192119
 SHEET
EX-1
 OF 2 SHEETS

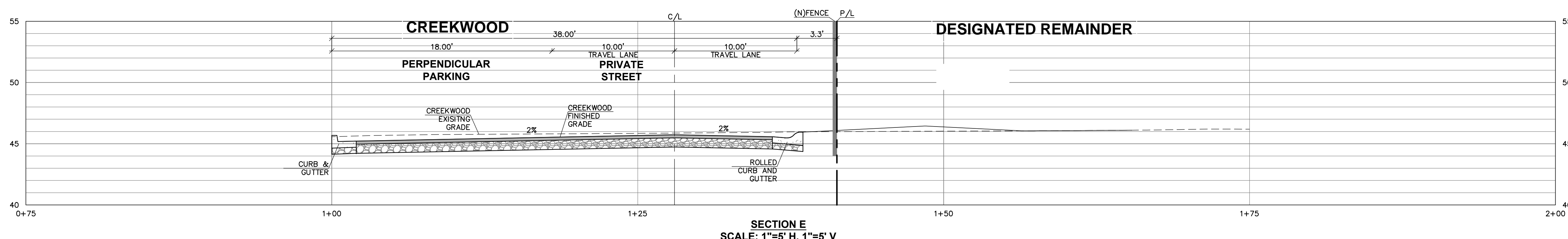
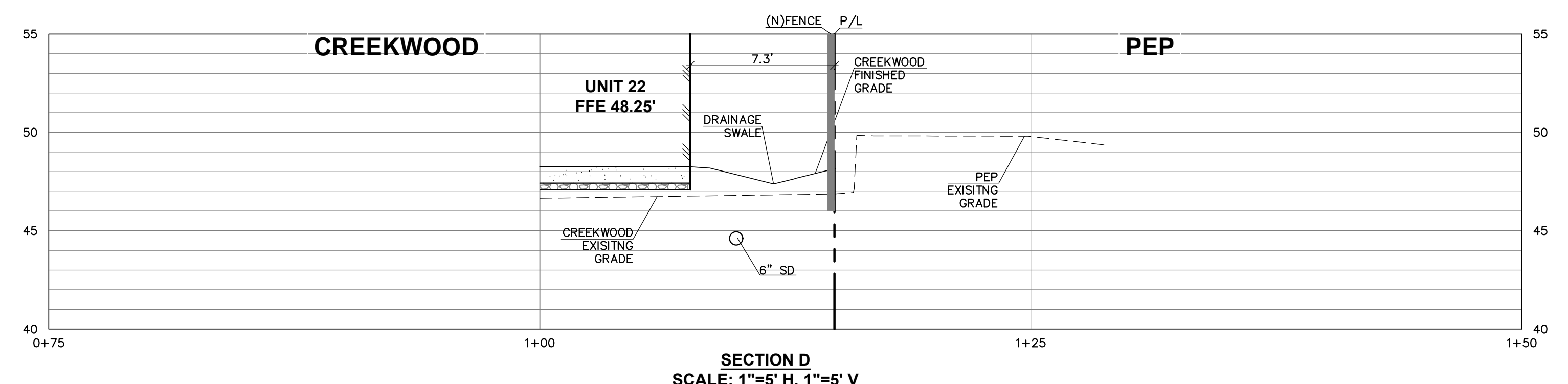
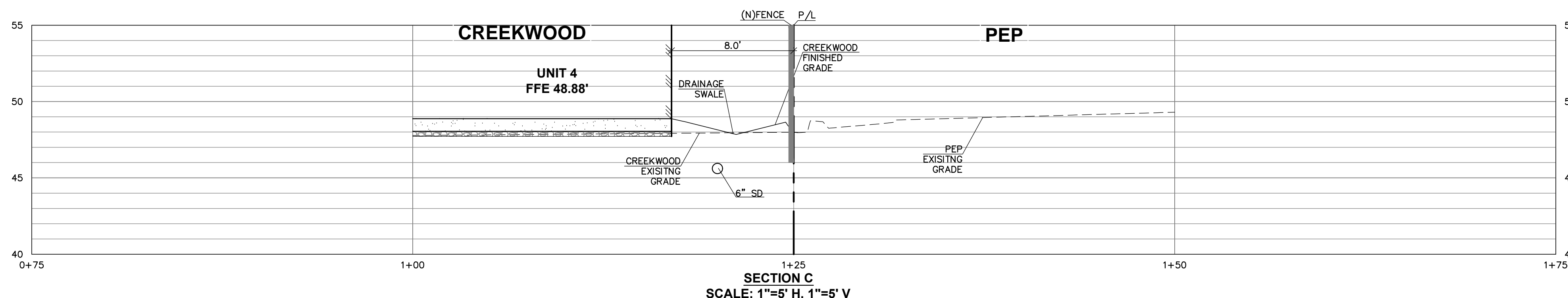
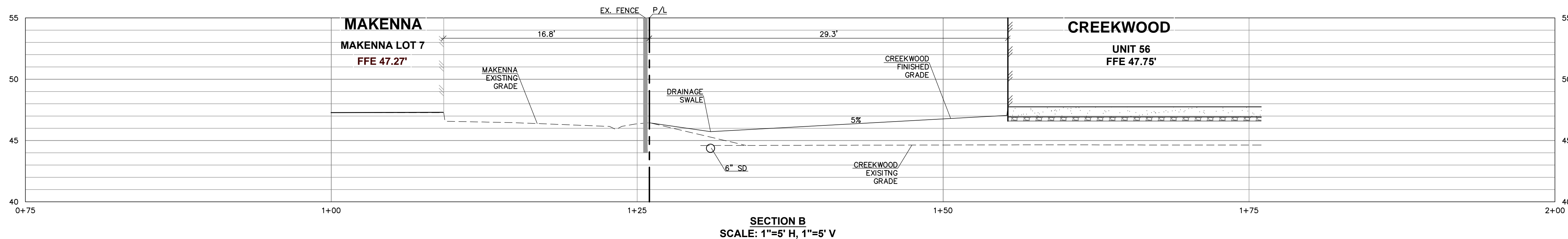
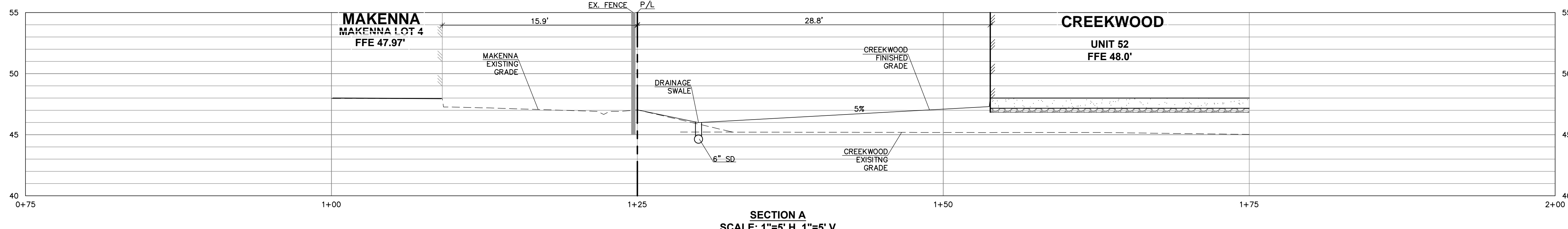




LEGEND	
	EXISTING
	PROPOSED
	TOE/TOP OF SLOPE
	FENCE
	EXTERIOR PROPERTY LINE
	LOT LINE
	CONCRETE
	CURB & GUTTER
	ASPHALT CONCRETE
	STORM DRAIN
	STORM DRAIN MANHOLE
	DROP INLET/TURNING STRUCTURE
	WATER LINE
	JOINT TRENCH
	SANITARY SEWER MANHOLE
	CATCH BASIN
	WATER METER
	DOUBLE CHECK VALVE
	CANOPY (SEE ARBORIST REPORT DATED JULY 26, 2022 FOR TREE INFORMATION)
	TREE TO BE REMOVED
	BASIN AREA (BASMAA TREATMENT)
	50FT SETBACK FROM TOP OF BANK
	APPROXIMATE TOP OF BANK FOR ADOBE CREEK
	APPROXIMATE OHW PER MONTROSE BIOLOGICAL SURVEY
	RIPARIAN CORRIDOR SEE EXISTING CONDITIONS EXHIBIT FOR INFORMATION.
	OVERLAND FLOW ROUTING, SEE UTILITY PLAN FOR OVERVIEW OF STORM DRAIN SYSTEM
	FEMA FLOOD PLAIN EFFECTIVE SEPTEMBER 25, 2023 PER CLOMR PERFORMED BY BALANCE HYDROLOGICS
	SEE FOCUSED PLAN AND PROFILE LAYOUT FOR PROPOSED BRIDGE CROSSING ADOBE CREEK SHEET C-12 FOR ADDITIONAL DETAIL.
	UP TO 5FT RETAINING WALL AT EASTERLY LIMITS OF BUILDING PADS ADJACENT TO NORTHERN BIORETENTION BASIN AREAS.
	FLOOD PLAIN PER MODELING BY WEST CONSULTANTS
	LIMIT OF RIPARIAN HABITAT BIOLOGICAL STUDY AREA BY MONTROSE.
	APPROXIMATE BOUNDARY OF RIPARIAN HABITAT, BY MONTROSE.

REVISIONS	BY

SECTIONS
 CREEKWOOD CONDOMINIUM PROJECT
 270 & 280 CASA GRANDE ROAD APN 017-040-051 & -016
 PETALUMA CALIFORNIA



STEVEN J. LAFRANCHI & ASSOCIATES, INC.
 CIVIL ENGINEERS - LAND SURVEYORS
 LAND PLANNERS - LANDSCAPE ARCHITECTS
 PETALUMA THEATRE SQUARE
 PETALUMA, CALIFORNIA 94952
 (707) 762-3122 FAX (707) 762-3239



DATE: 2023.12.20
 SCALE: 1" = 30'
 DESIGN: S.JL,CRK,AJC
 DRAWN: CRK
 CHECK: S.JL
 JOB: CREEKWOOD
 JOB No: 192119
 SHEET
EX-2
 OF 2 SHEETS