

GRADING QUANTITIES

CUT: 57,000 CUBIC YARDS
 FILL: 31,300 CUBIC YARDS
 NET: 25,700 CUBIC YARDS

- PROPOSED FINISH GRADE IS DEFINED AS THE FINAL GRADE AS INDICATED ON THE GRADING PLAN.
- THE EARTHWORK QUANTITIES ABOVE HAVE NOT BEEN ADJUSTED TO ACCOUNT FOR:
 - FOOTINGS
 - TRENCH SPOILS
 - CLEARING AND GRUBBING INCLUDING REMOVAL OF EXISTING PAVEMENT SECTIONS OR UNACCEPTABLE SOILS
 - BULKING OR SHRINKAGE
 - OVER-EXCAVATION AND RE-COMPACTION
 - TOPSOIL
- THE EARTHWORK QUANTITIES ABOVE HAVE BEEN ADJUSTED TO ACCOUNT FOR:
 - THICKNESS OF THE PAVEMENT SECTION (14,700 CY LESS FILL)
 - SLABS (10,800 CY LESS FILL)

RIVER TRAIL GRADING

CUT: 1,200 CUBIC YARDS (ALLOW)
 FILL: 0 CUBIC YARDS
 NET: 1,200 CUBIC YARDS

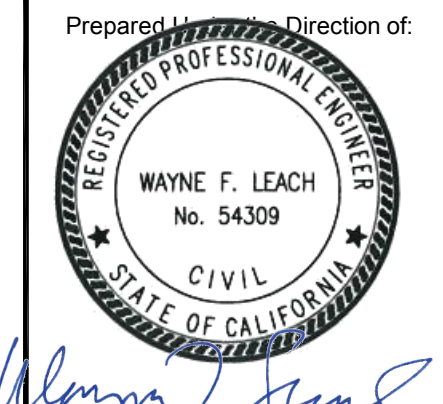
- RIVER TRAIL GRADING IS LIMITED TO EXCAVATION BELOW EXISTING GRADE FOR CONSTRUCTION OF THE PROPOSED TRAIL SECTION.
- TRAIL SECTION IS PROPOSED AS 6" CONCRETE OVER 4" CLASS 2 AGGREGATE BASE WITH 2' WIDE SHOULDERS EACH SIDE.
- FINISH GRADE FOR THE TO FOLLOW EXISTING GRADE. TRAIL CROSS SLOPE 1.5% MAXIMUM, LONGITUDINAL SLOPE 5% MAXIMUM FOR ACCESSIBILITY.

Rev	Date	Description	Designed	Drawn	Checked
03/22/2024		SPAR SUBMITTAL			

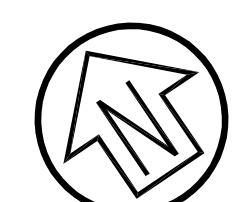
CSW ST2
 CSW/Stuber-Stroeh Engineering Group, Inc.
 Civil Engineering · Planning · Land Surveying & Mapping
 504 Redwood Blvd., Ste 310 Novato, CA 94947
 tel.: 415.883.9850 fax: 415.883.9835
 http://www.cswst2.com © 2023

City: Petaluma
 County: Sonoma
 State: California

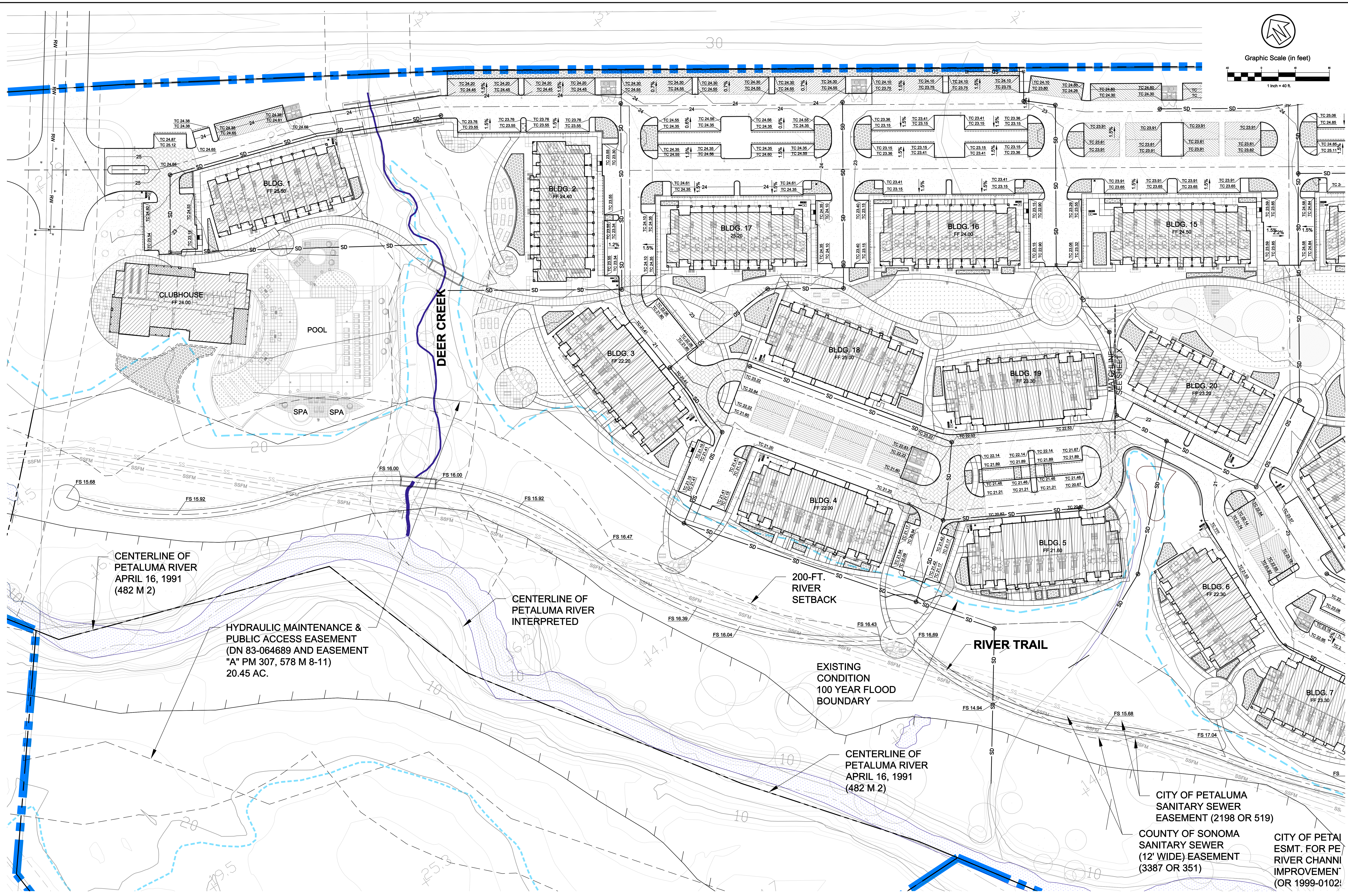
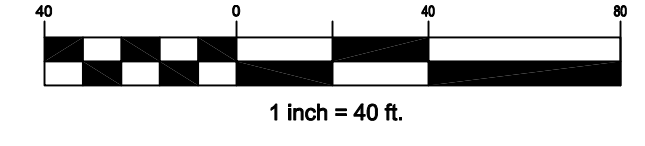
DEER CREEK APARTMENTS
 PRELIMINARY GRADING & DRAINAGE PLAN - OVERALL
 ACCLAIM COMPANIES



Sheet: **C3.0**
 Scale: 1" = 80'
 Date: 12/11/2023
 Project Number: 23.00.128
 Plan File:



Graphic Scale (in feet)



CENTERLINE OF PETALUMA RIVER
APRIL 16, 1991
(482 M 2)

HYDRAULIC MAINTENANCE &
PUBLIC ACCESS EASEMENT
(DN 83-064689 AND EASEMENT
"A" PM 307, 578 M 8-11)
20.45 AC.

CENTERLINE OF PETALUMA RIVER
INTERPRETED

200-FT.
RIVER
SETBACK

EXISTING
CONDITION
100 YEAR
FLOOD
BOUNDARY

CENTERLINE OF PETALUMA RIVER
APRIL 16, 1991
(482 M 2)

RIVER TRAIL

CITY OF PETALUMA
SANITARY SEWER
EASEMENT (2198 OR 519)

COUNTY OF SONOMA
SANITARY SEWER
(12' WIDE) EASEMENT
(3387 OR 351)

CITY OF PETALUMA
ESMT. FOR PE
RIVER CHANNEL
IMPROVEMENT
(OR 1999-0102)

Rev	Date	Description	Designed	Drawn	Checked

CSW ST2
CSW/Stuber-Stroeh Engineering Group, Inc.
 Civil Engineering • Planning • Land Surveying & Mapping
 504 Redwood Blvd., Ste 310
 Novato, CA 94947
 tel.: 415.883.9850
 fax: 415.883.9835
 www.cswst2.com

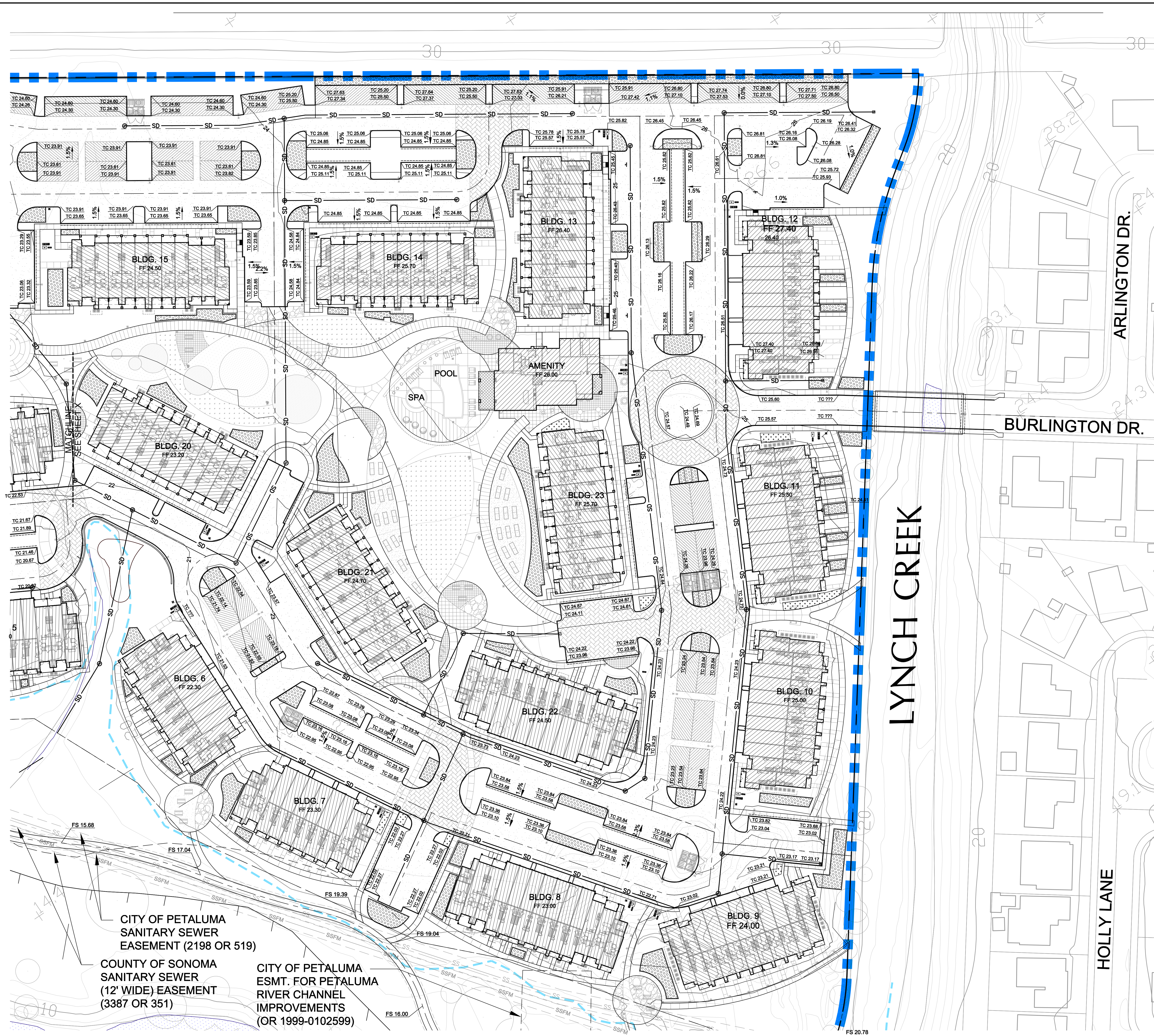
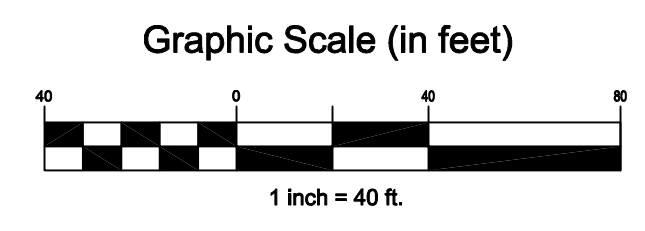
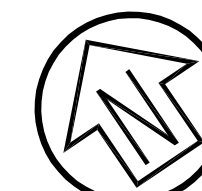
City	Petaluma
County	Sonoma
State	California

DEER CREEK APARTMENTS
 PRELIMINARY GRADING & DRAINAGE PLAN - WEST
 ACCLAIM COMPANIES

Prepared by: *Wayne F. Leach*
 Director of:

 WAYNE F. LEACH
 No. 54309
 CIVIL
 STATE OF CALIFORNIA

Sheet	C3.1
Scale:	1" = 40'
Date:	12/11/2023
Project Number:	23.00.128
Plan File:	



CITY OF PETALUMA
SANITARY SEWER
EASEMENT (2198 OR 519)

COUNTY OF SONOMA
SANITARY SEWER
(12' WIDE) EASEMENT
(3387 OR 351)

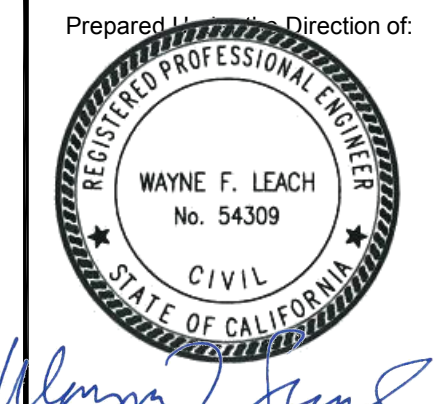
CITY OF PETALUMA
ESMT. FOR PETALUMA
RIVER CHANNEL
IMPROVEMENTS
(OR 1999-0102599)

Rev	Date	Description	Designed	Drawn	Checked
03/22/2024		SPAR SUBMITTAL			

CSW ST2
CSW/Stuber-Stroeh Engineering Group, Inc.
 Civil Engineering · Planning · Land Surveying & Mapping
 504 Redwood Blvd., Ste 310 tel.: 415.883.9850
 Novato, CA 94947 fax: 415.883.9835
 http://www.cswst2.com © 2023

City	Petaluma
County	Sonoma
State	California

DEER CREEK APARTMENTS
 PRELIMINARY GRADING & DRAINAGE PLAN - EAST
 ACCLAIM COMPANIES



Sheet	C3.2
Scale:	1" = 40'
Date:	12/11/2023
Project Number:	23.00.128
Plan File:	

Wayne F. Leach