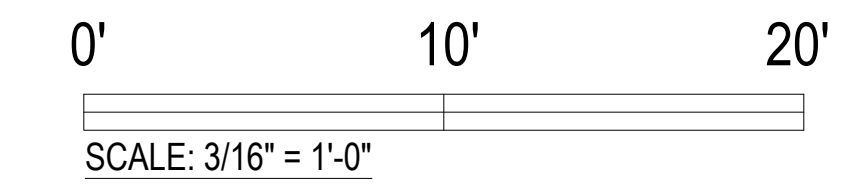
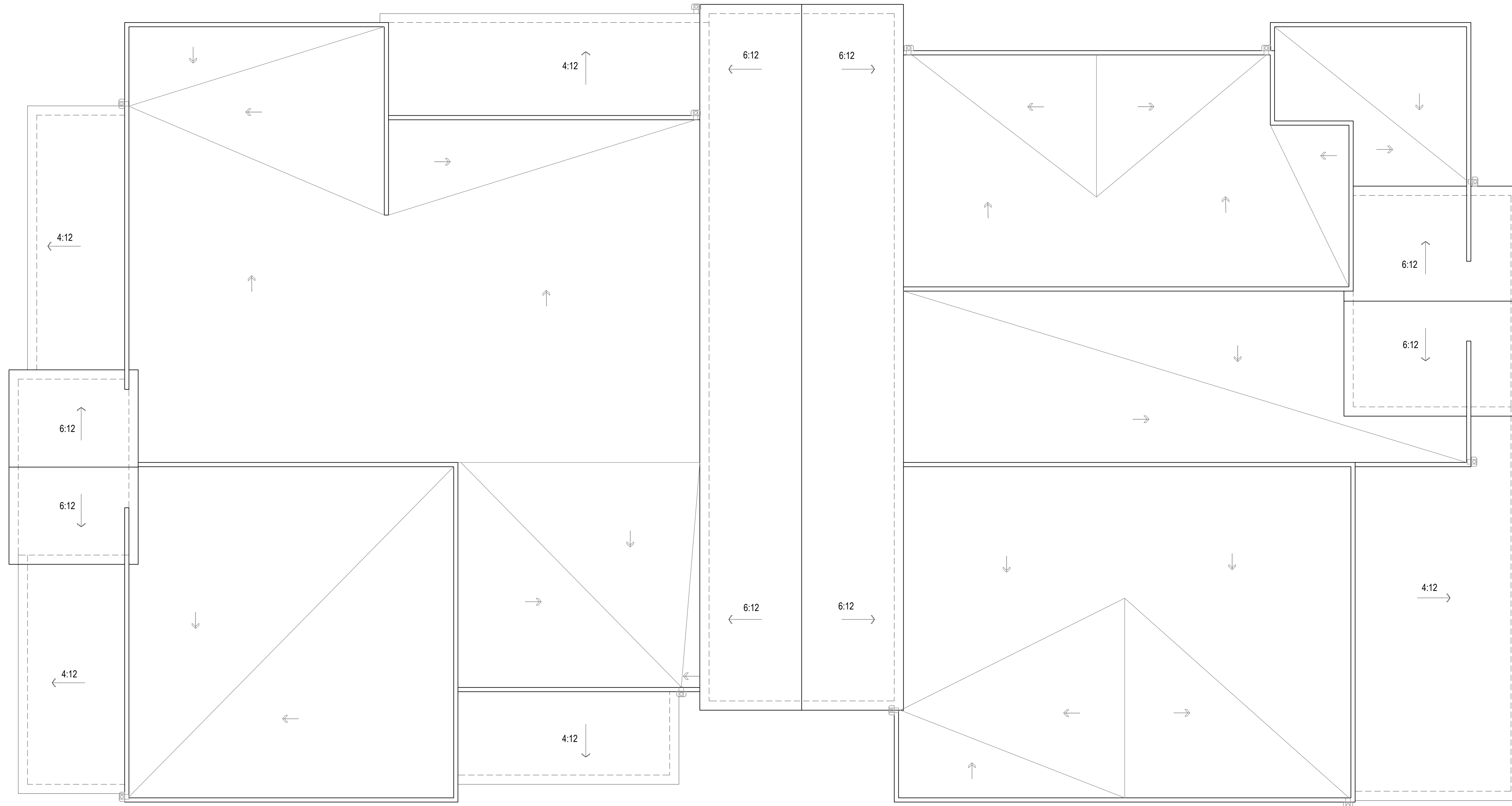


**CLUBHOUSE-1 PLAN**

NET AREA : 10,899 S.F.  
 PATIOS : 1,996 S.F.  
 TOTAL GROSS : 12,895 S.F.

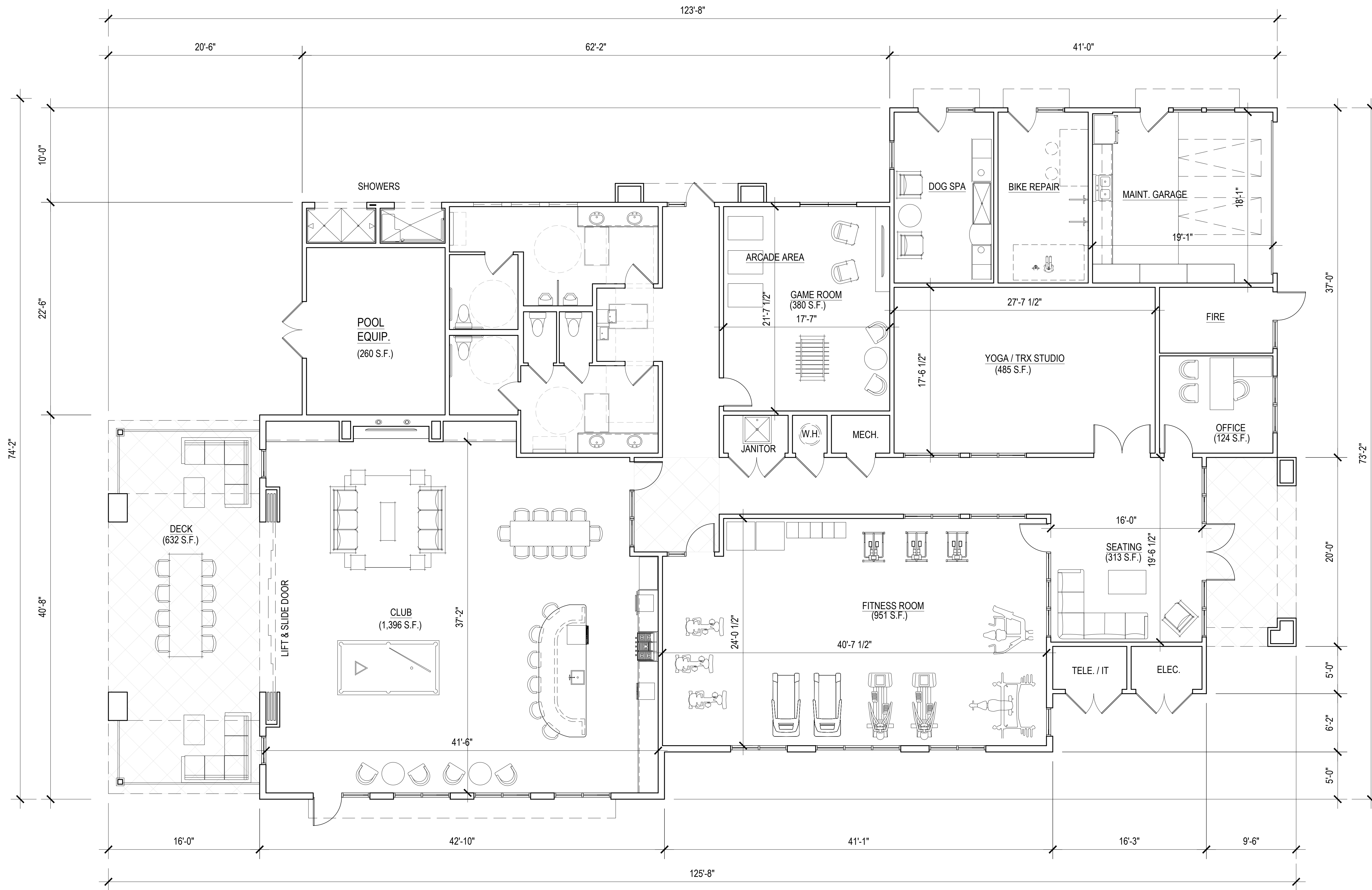




CLUBHOUSE-1 ROOF PLAN  
 0' 10' 20'  
 SCALE: 3/16" = 1'-0"

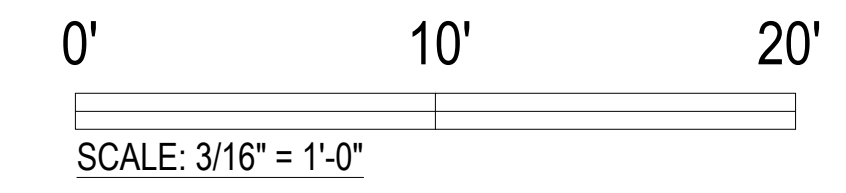


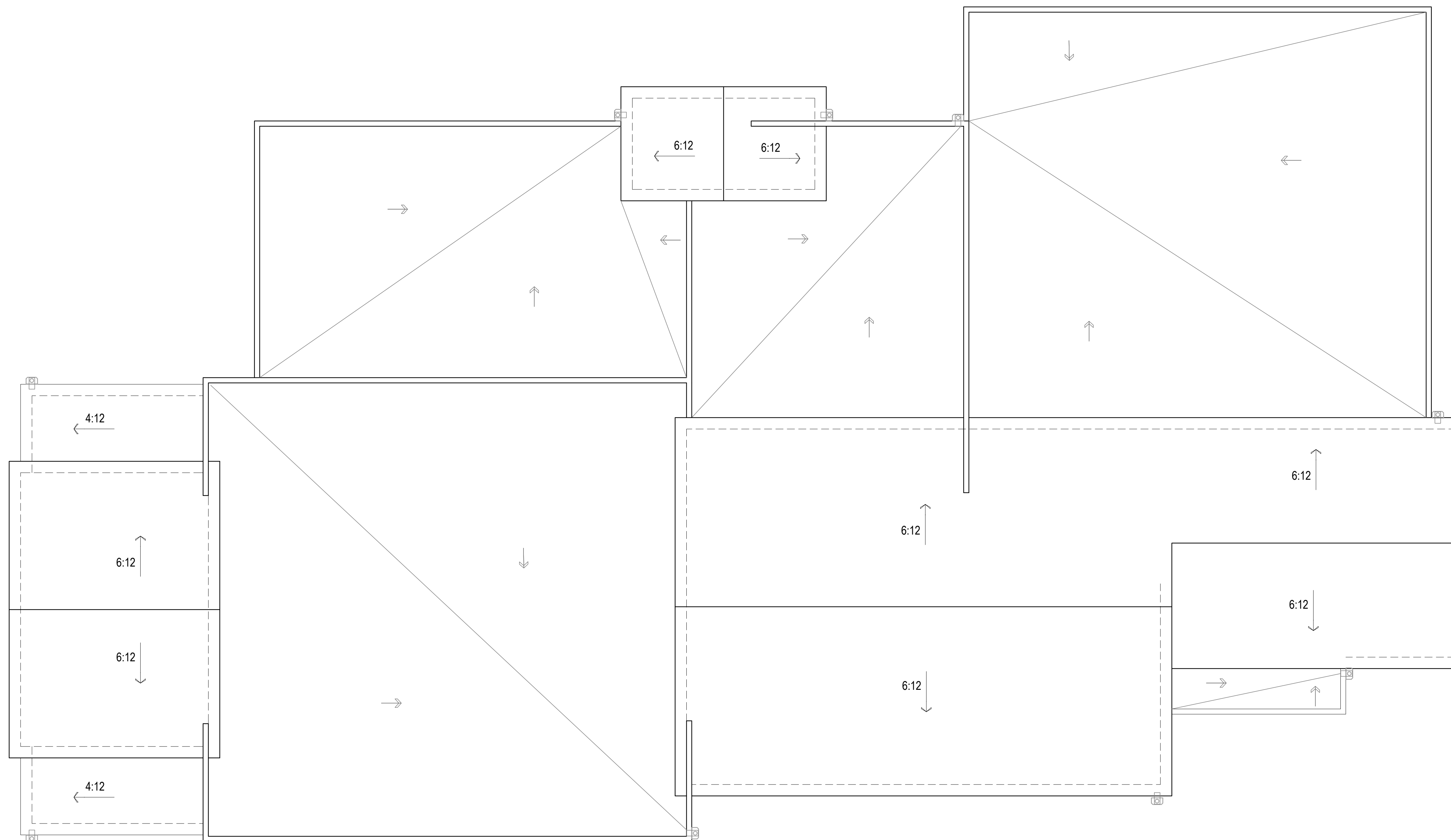




**CLUBHOUSE-2 PLAN**

NET AREA : 6,674 S.F.  
 DECK : 632 S.F.  
 TOTAL GROSS : 7,306 S.F.





CLUBHOUSE-2 ROOF PLAN  
 0' 10' 20'  
 SCALE: 3/16" = 1'-0"







CLUBHOUSE-1 FRONT ELEVATION



CLUBHOUSE-1 RIGHT ELEVATION

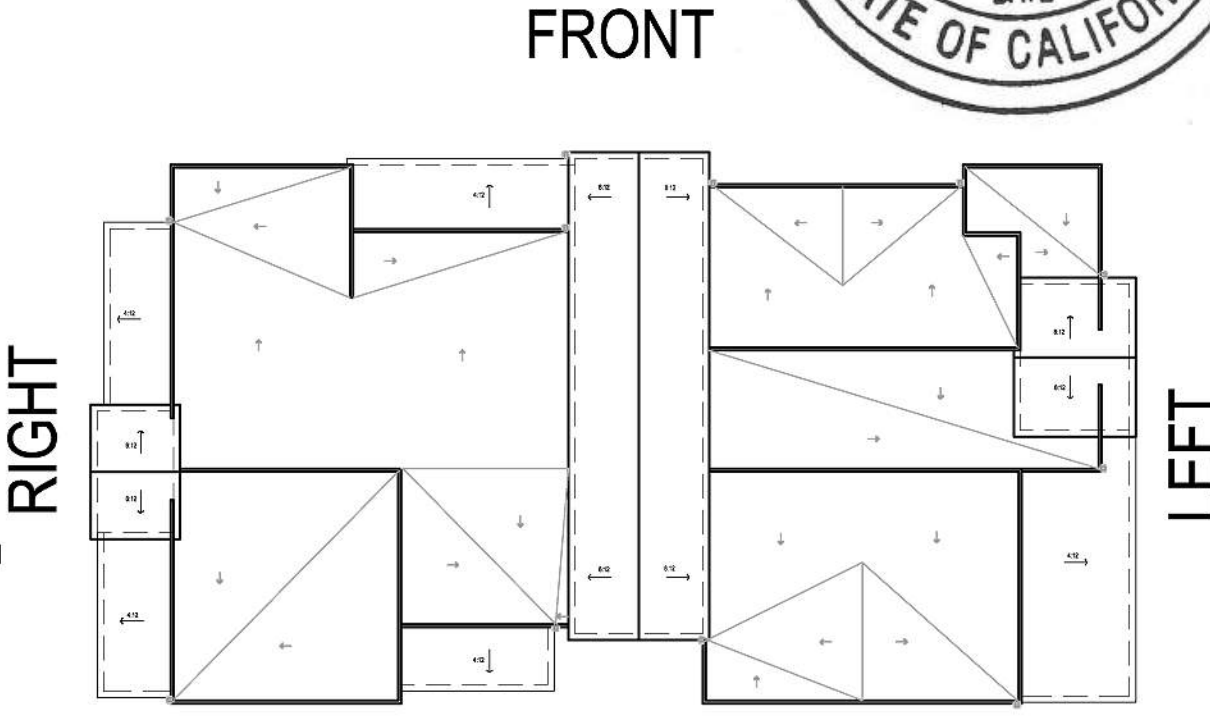
CLUBHOUSE-1 LEFT ELEVATION



CLUBHOUSE-1 REAR ELEVATION

0' 10' 20'  
SCALE: 3/16" = 1'-0"

- MATERIAL & COLOR**
- 1. BOARD AND BATTEN
  - 2. HORIZONTAL SIDING
  - 3. METAL ROOF  
COLOR: GRAY
  - 4. CORRUGATED METAL  
COLOR: GREY
  - 5. METAL AWNING
  - 6. PAINTED GARAGE DOOR
  - 7. PAINTED POST
  - 8. COMPOSITE WOOD RAILING
  - 9. STOREFRONT BRONZE
- A. SHERWIN WILLIAMS  
CYBERSPACE SW7076
  - B. SHERWIN WILLIAMS  
ELLIE GRAY SW7650
  - C. SHERWIN WILLIAMS  
ICE CUBE SW6252



REAR

© 2024 by HUMPHREYS & PARTNERS ARCHITECTS, LP. The arrangements depicted herein are the sole property of Humphreys & Partners Architects, LP and may not be reproduced in any form without its written permission. Architectural conceptual site plans are for feasibility purpose only. Revisions may occur due to further investigation from regulatory authorities and building code analysis. Dimensions shown are of a strategic intent only. Refer to surveys and civil drawings for technical information and measurements.





CLUBHOUSE-2 REAR ELEVATION

CLUBHOUSE-2 FRONT ELEVATION



CLUBHOUSE-2 LEFT ELEVATION



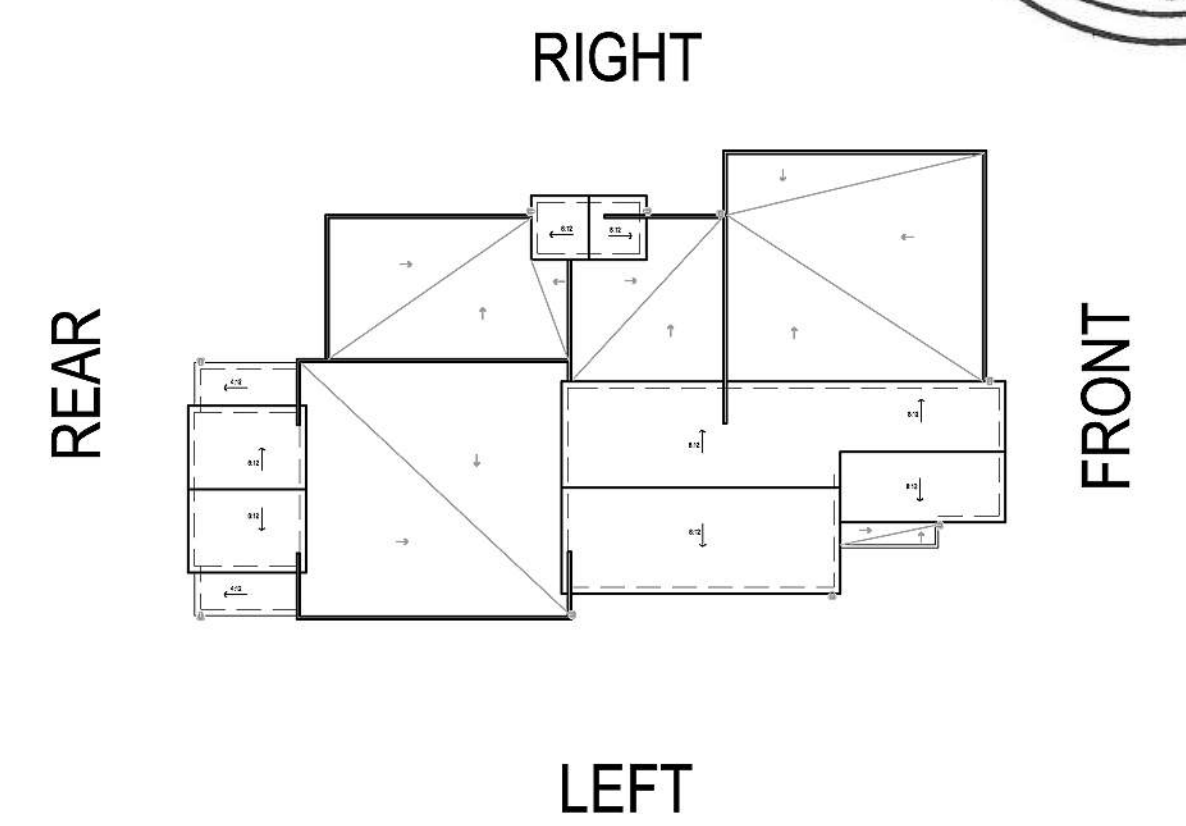
CLUBHOUSE-2 RIGHT ELEVATION

0' 10' 20'  
SCALE: 3/16" = 1'-0"

**MATERIAL & COLOR**


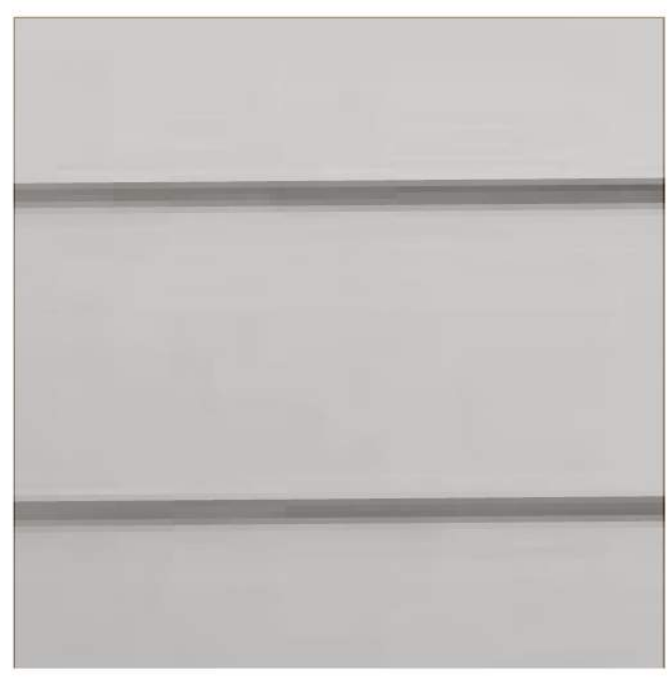


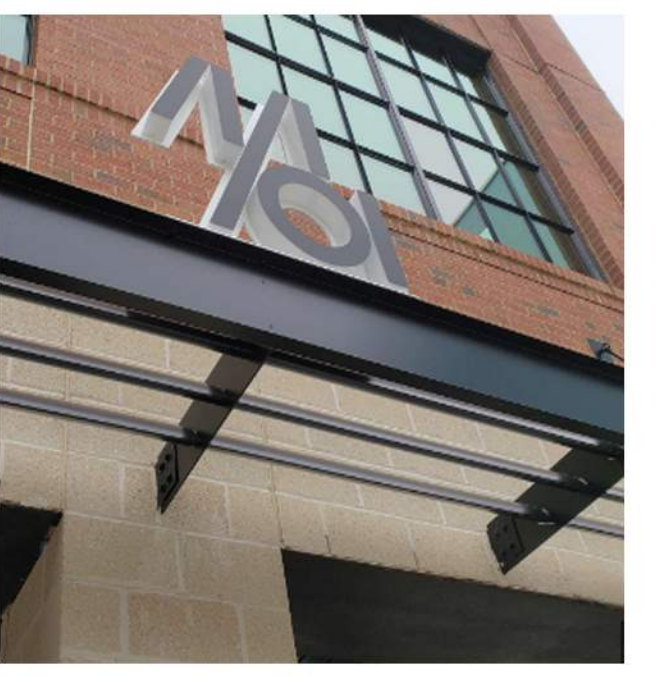
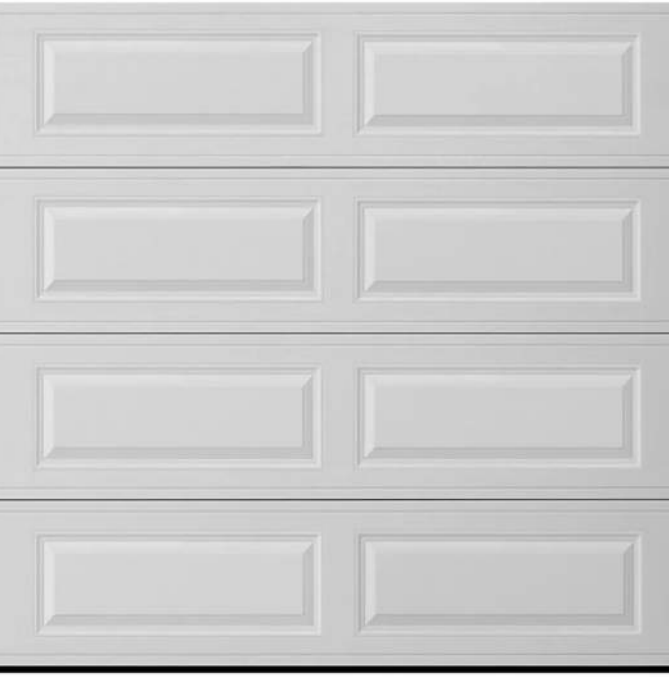



- 1. BOARD AND BATTEN
- 2. HORIZONTAL SIDING
- 3. METAL ROOF  
COLOR: GRAY
- 4. CORRUGATED METAL  
COLOR: GREY
- 5. METAL AWNING
- 6. PAINTED GARAGE DOOR
- 7. PAINTED POST
- 8. COMPOSITE WOOD RAILING
- 9. STOREFRONT BRONZE

- A. SHERWIN WILLIAMS  
CYBERSPACE SW7076
- B. SHERWIN WILLIAMS  
ELLIE GRAY SW7650
- C. SHERWIN WILLIAMS  
ICE CUBE SW6252



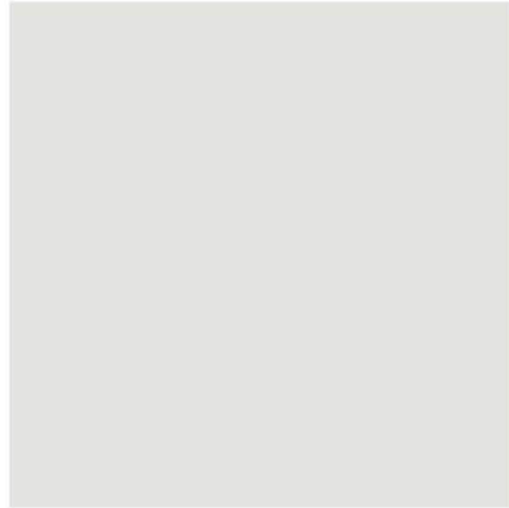




NUMBERS DENOTE MATERIALS

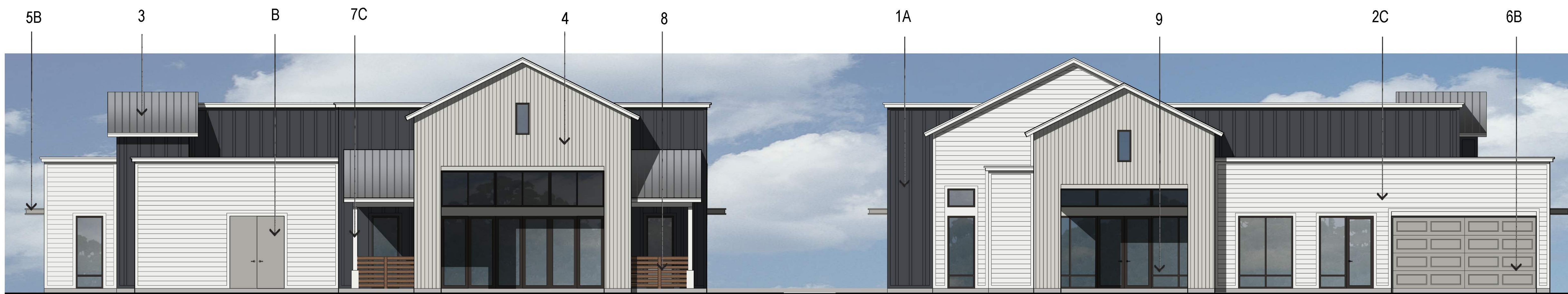
				
1. BOARD AND BATTEN JAMES HARDIE FINISH: TBD COLOR: VARIES, SEE LEGEND	2. FIBER CEMENT HORIZONTAL SIDING JAMES HARDIE FINISH: TBD COLOR: VARIES, SEE LEGEND	3. METAL ROOF ATAS STANDING SEAM COLOR: DOVE GREY OR SIMILAR	4. CORRUGATED METAL COLOR: GREY	5. METAL AWNING
				
6. PAINTED GARAGE DOOR	7. PAINTED POST	8. COMPOSITE WOOD RAILING	9. ALUMINUM STOREFRONT COLOR: BRONZE	

LETTERS DENOTE COLORS

		
A. EXTERIOR PAINT SHERWIN WILLIAMS 235-C7 CYBERSPACE SW7076	B. EXTERIOR PAINT SHERWIN WILLIAMS 239-C6 ELLIE GRAY SW7650	C. EXTERIOR PAINT SHERWIN WILLIAMS 257-C3 ICE CUBE SW6252



CLUBHOUSE-1 FRONT ELEVATION



CLUBHOUSE-2 REAR ELEVATION

CLUBHOUSE-2 FRONT ELEVATION

