

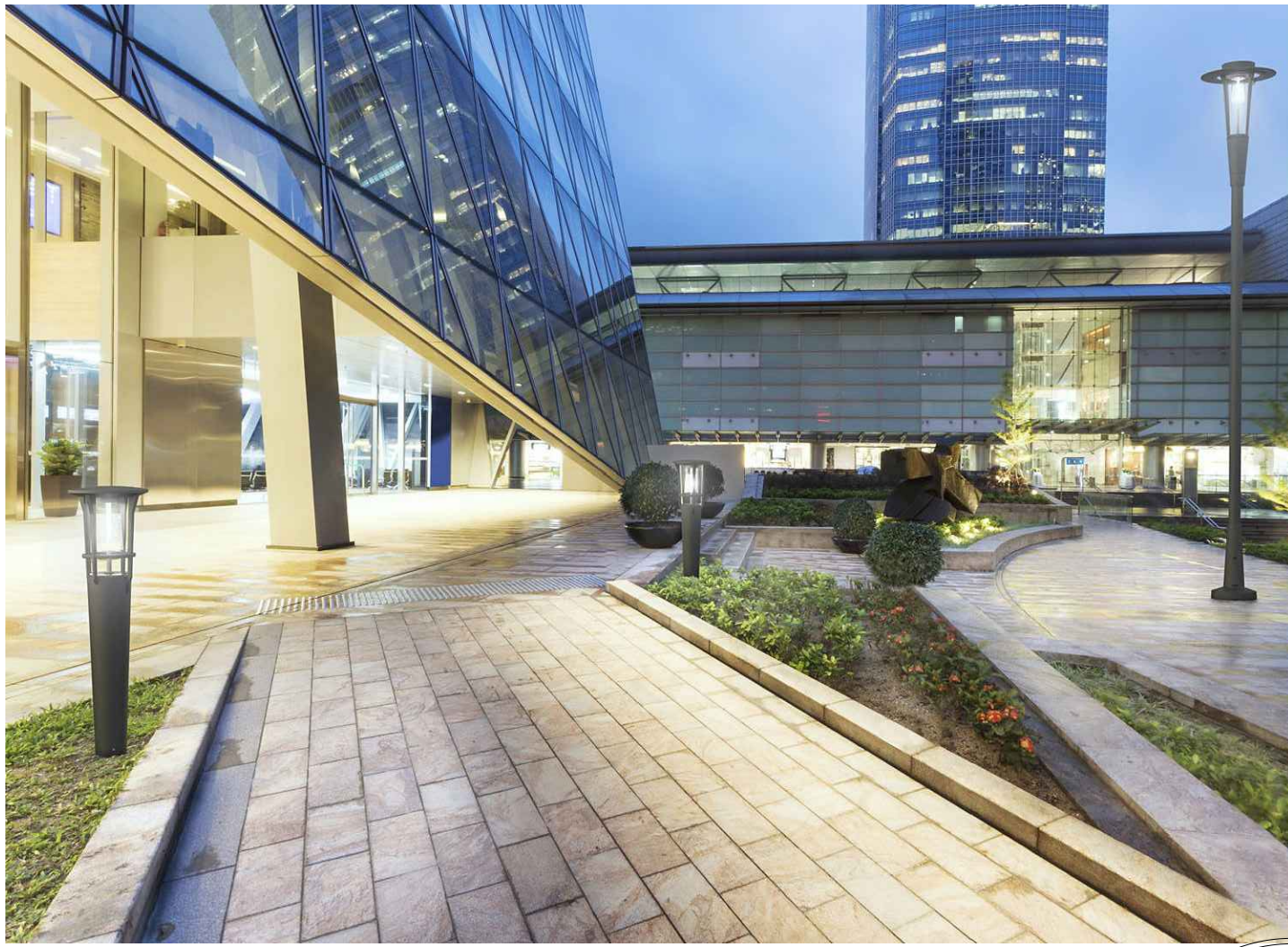


LIGHTING LEGEND

- Street Scale Pole Light
- Pedestrian Scale Pole Light
- Accent Pole Light
- Bollard Light
- Tree Down Light / Moon Light
- Tree String Light
- Carport Light, S.A.D.
- Bldg Wall Light, S.A.D.

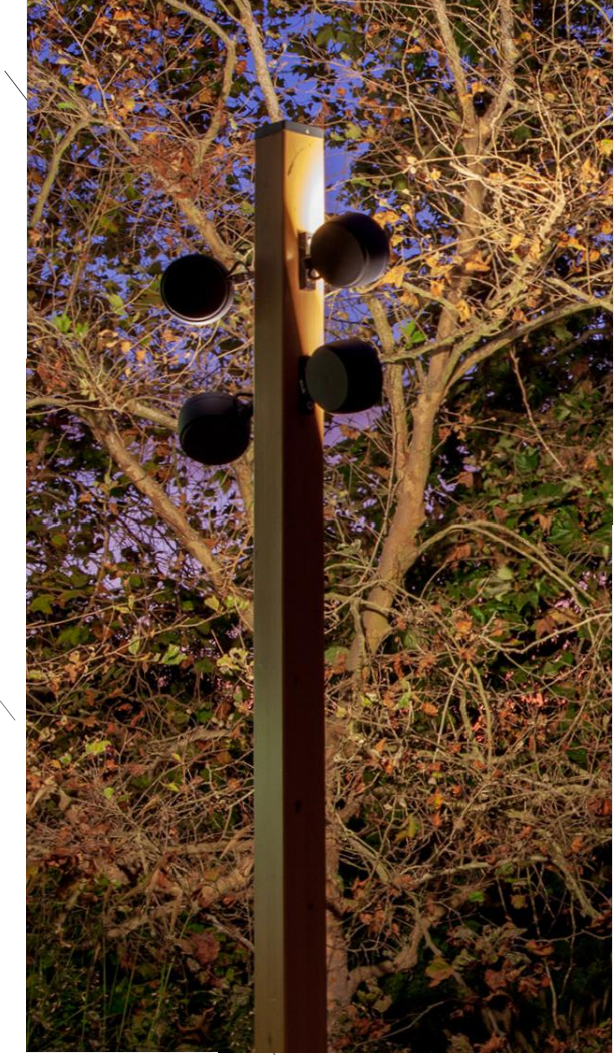


Street Scale Pole Light by Gardco: OptiForm Medium LED @ 22' on pole



Street and Pedestrian Scale Pole Light by Lumec: SleekVision Post Top LED @ 14'-8" on pole

Bollard Light by Lumec: SleekVision Post Top LED (2'-9" total height)



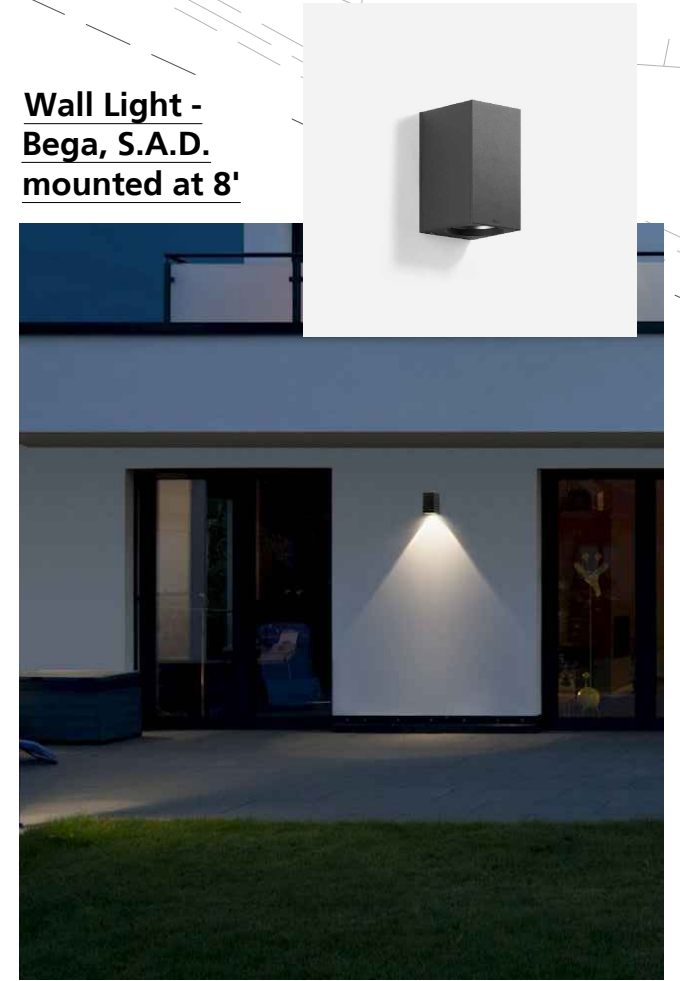
Accent Pole Light by Structura w/ Bega multi-head pole attachment (20' tall pole), 14', 16' and 18' attachment heights



Tree Downlight / Moonlight by BK Lighting - Nite Star II with tree mounting strap, decorative



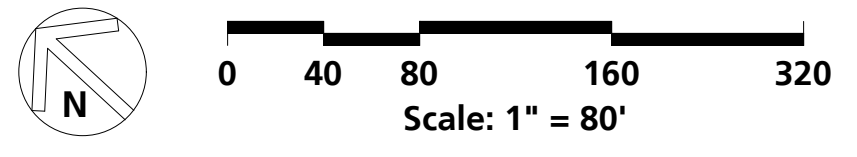
Tree String Light - Tokistar lights, decorative

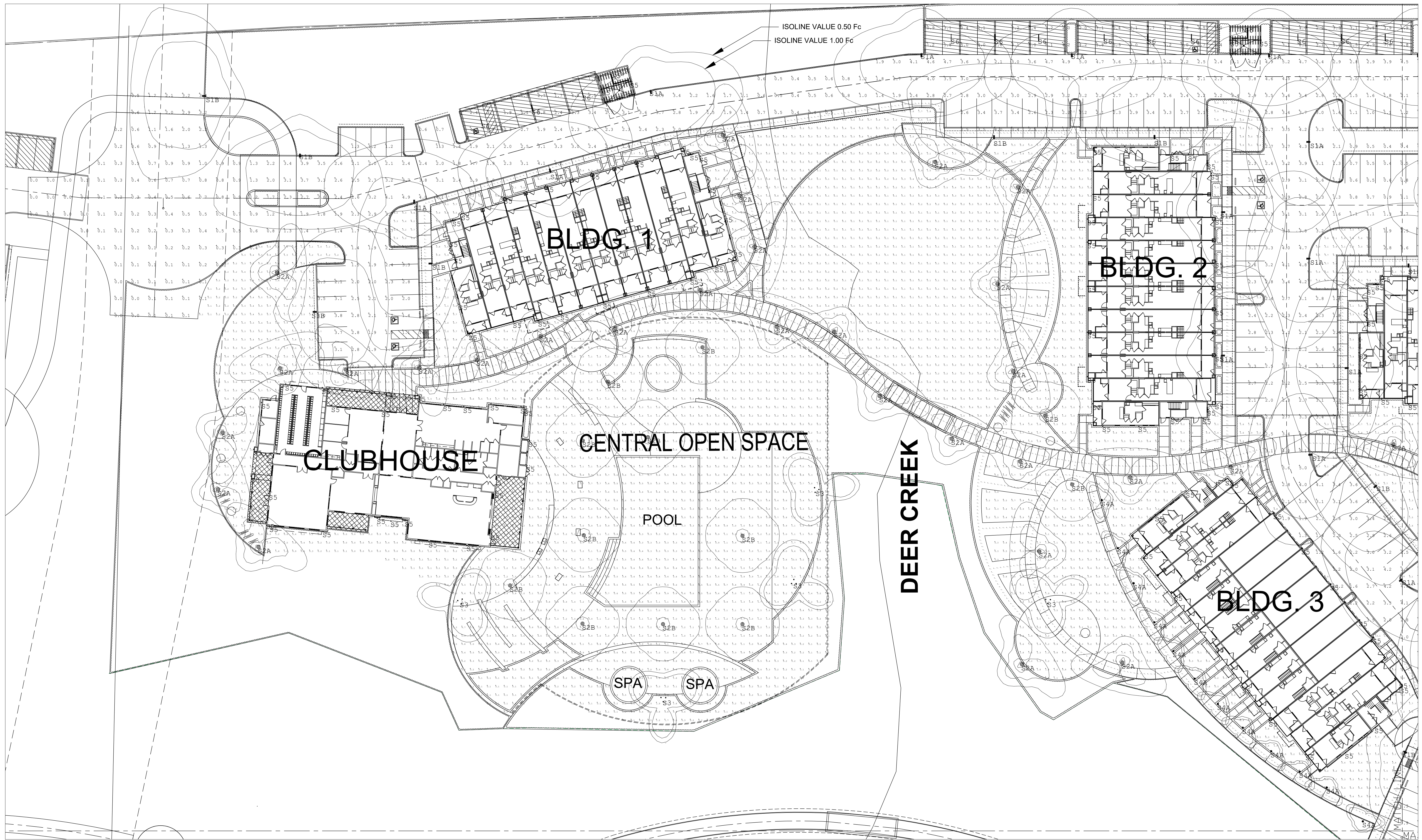


Wall Light - Bega, S.A.D. mounted at 8'



Carport Light - Fluxstream, mounted at 10'





SCALE: 1" = 20'-0"

PLAN VIEW

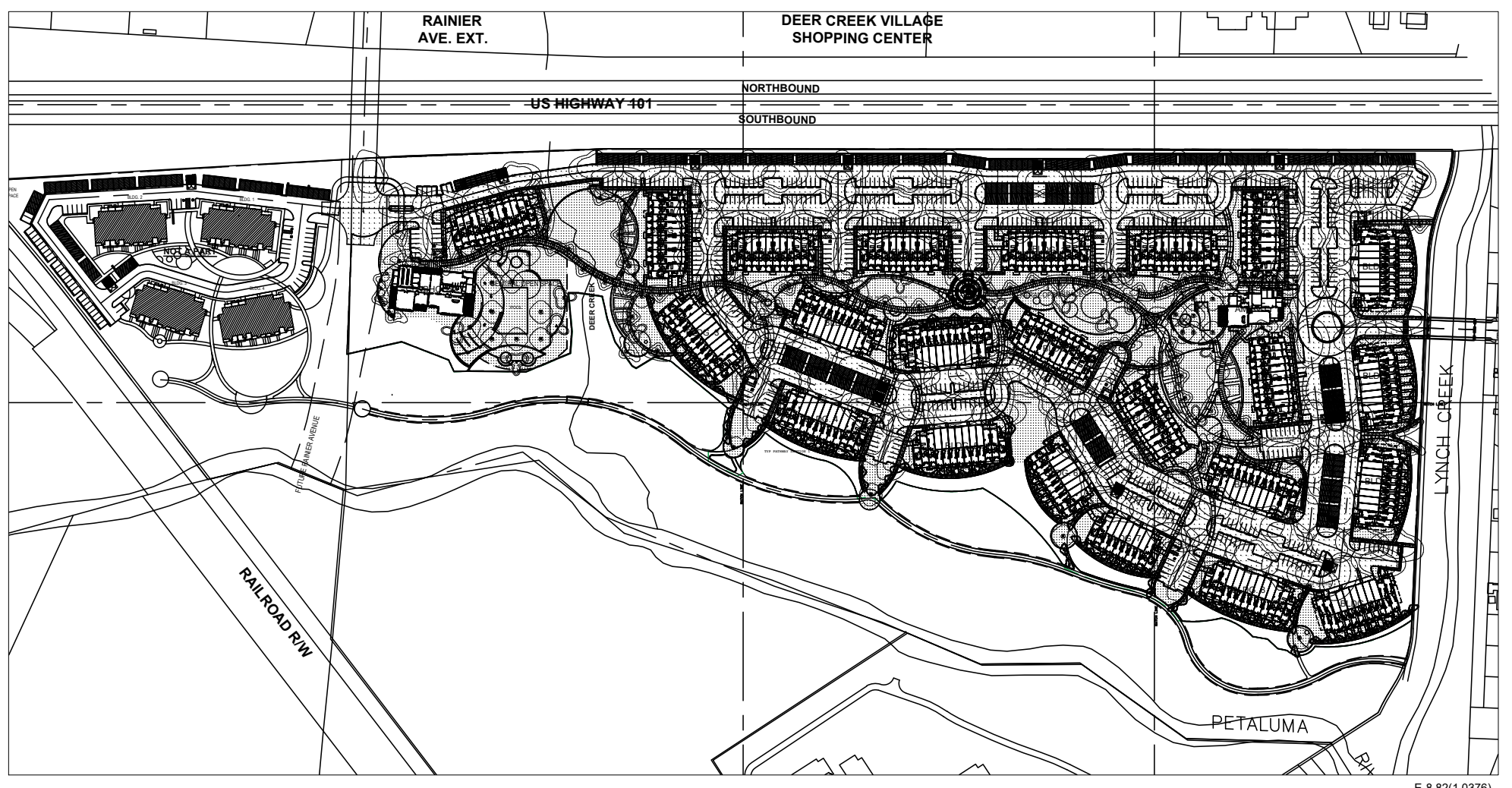
Symbol	Qty	Label	Arrangement	Description	UDF *	LLF	Lum. Lumens	Lim. Watts	Tot. Watts	Data Source Filename
107	21A	Single	GARDCO OFF-M-A08-R30-T2M - 22' M.R.		N.A.	0.850	11507	74.41	7961.87	OFF-M-A08-R30-T2M.Les
29	21B	Single	GARDCO OFF-M-A08-R30-T3M - 22' M.R.		N.A.	0.850	11415	74.41	2157.89	OFF-M-A08-R30-T3M.Les
4	21C	Single	GARDCO OFF-M-A08-R30-T4M - 22' M.R.		N.A.	0.850	11568	74.41	297.64	OFF-M-A08-R30-T4M.Les
81	22A	Single	LZMCO V2C-2RL350W-G1-3-CAGE - 14'-8" L.C.		N.A.	0.850	2755	33	2673	vic-291350w-g1-3-cage (crt1508171449-005-099m).Les
34	22B	Single	LZMCO V2C-30L350W-G1-5-CAGE - 14'-8" L.C.		N.A.	0.850	3007	35	1190	vic-30L350w-g1-5-cage (e1506063m).Les
12	23	GROUP	BEGA 84 217-R3 2 14' M.R. - 84 216-R3 2 16' - 84 215-R3 2 18'		N.A.	0.850	5044	62	744	84219R3_BEGA_18S.Les/84218R3_BEGA_18S.Les/84217R3_BEGA_18S.Les
144	24A	Single	LZMCO VNC-15L350W-G1-3-CAGE - 2'-9" L.C.		N.A.	0.850	1068	18.1	2552.1	VNC-15L350w-g1-3-cage (crt1508171449-006-099m).Les
8	24B	Single	LZMCO VNC-15L350W-G1-5-CAGE - 2'-9" L.C.		N.A.	0.850	1314	18.29	146.32	VNC-15L350w-g1-5-cage (e1506111m).Les
560	25	Single	BEGA 33 581-R3 - M.R. VAR182		N.A.	0.850	747	10.9	6104	33581_BEGA_18S.Les
81	26	Single	DAY-BRITE FSX440L830-UNV-DIM - 10' M.R.		0.950	0.807	3955	32.4	2624.4	FSX440L840-UNV.Les

* UDF FACTOR PROPORTED TO SIMULATE 3000K CCT OPTION

Label	CalcType	Units	Avg	Max	Min	Avg/Min	Max/Min
TYP PARKING SECTION 1	Illuminance	Fc	2.02	8.3	0.4	5.05	20.75
TYP PARKING SECTION 2	Illuminance	Fc	2.50	8.3	0.5	5.00	16.60
TYP PARKING SECTION 3	Illuminance	Fc	2.15	3.7	0.9	2.39	4.11
TYP PARKING SECTION 4	Illuminance	Fc	2.99	9.2	0.6	4.98	15.33
TYP PATHWAY SECTION 1	Illuminance	Fc	2.68	5.6	0.5	5.36	11.20
TYP PATHWAY SECTION 2	Illuminance	Fc	1.97	2.7	0.6	2.45	4.50
TYP PATHWAY SECTION 3	Illuminance	Fc	2.33	3.1	1.8	1.29	1.72
TYP PATHWAY SECTION 4	Illuminance	Fc	3.28	4.6	1.7	1.93	2.71

Note: Unless otherwise specified - the lamp lumen depreciation (LLD) for legacy sources used in these calculations is based on published mean lumen ratings by major lamp manufacturers; 0.80 LLD for pulse start metal halide; 0.90 LLD for high pressure sodium; 0.95 LLD for linear T8 and T5 fluorescent; 0.86 LLD for compact fluorescent and induction; 0.88 LLD for Cosmo and Elite lamps. 0.94 LLD for all LED sources. Unless otherwise noted - 0.90 luminaire dirt depreciation (LDD) is commonly applied. In cases where appropriate - ballast factor (BF) is applied. Additional user defined factors (UDF) may be applied if necessary to represent luminaire performance to a higher degree of accuracy. Total light loss factor (LLF) is the product of all multiplied loss factors.

LIGHTING PLAN - PHOTOMETRIC ANALYSIS - LAYOUT VERIFICATION
(ALL VALUES SHOWN ARE MAINTAINED HORIZONTAL FOOTCANDLES AT FINISHED GRADE, U.O.N.)



PRELIMINARY - NOT FOR CONSTRUCTION
NOT FOR QUOTING PURPOSES

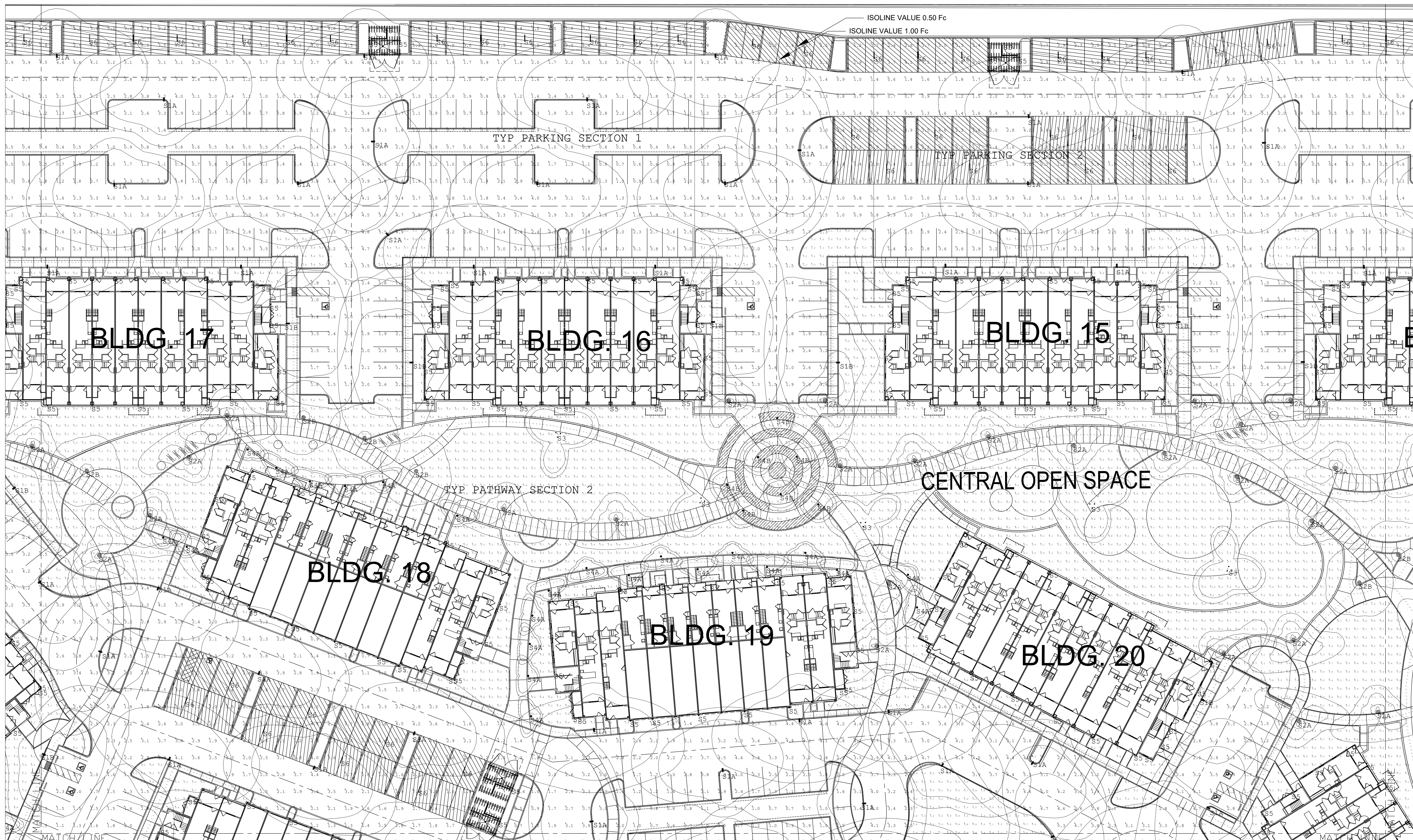
AR Associated Lighting Representatives, Inc.
10000 Wilshire Blvd, Suite 1000
Beverly Hills, CA 90210
Tel: 310.274.1111
Fax: 310.274.1112
www.arlighting.com

THIS DOCUMENT IS A PRELIMINARY DESIGN AND SHOULD NOT BE USED FOR CONSTRUCTION OR FOR ANY OTHER PURPOSES WITHOUT THE WRITTEN PERMISSION OF THE DESIGNER. THE DESIGNER ASSUMES NO LIABILITY FOR ANY ERRORS OR OMISSIONS IN THIS DOCUMENT. THE USER SHALL BE RESPONSIBLE FOR OBTAINING ALL NECESSARY PERMITS AND APPROVALS FROM THE APPROPRIATE AGENCIES. THE USER SHALL BE RESPONSIBLE FOR OBTAINING ALL NECESSARY INFORMATION FROM THE FIELD AND FOR VERIFYING THE ACCURACY OF ALL DATA PROVIDED TO THE DESIGNER. THE DESIGNER SHALL NOT BE RESPONSIBLE FOR ANY CONSTRUCTION DEFECTS OR FOR ANY OTHER DAMAGES ARISING FROM THE USE OF THIS DOCUMENT.

Lighting Analysis
SOFTWARE FOR LIGHTING DESIGNERS
AGI 32 LIGHTING ANALYSIS SOFTWARE
8800 BAYMEADOWS WAY WEST, SUITE 500, JACKSONVILLE, FL 32256

PROJECT FOR: ACCENTSCAPES
DEER CREEK APARTMENTS
PETALUMA, CA
DRAWING NO. / PRINT FILE: 22487HAL-R2 DWG/A32
SCALE: 1" = 20'-0"
DATE: 03-21-2024
SHEET: 1 OF 5
PROJECT NO.: 22487HAL-R2





SCALE: 1" = 20'-0"

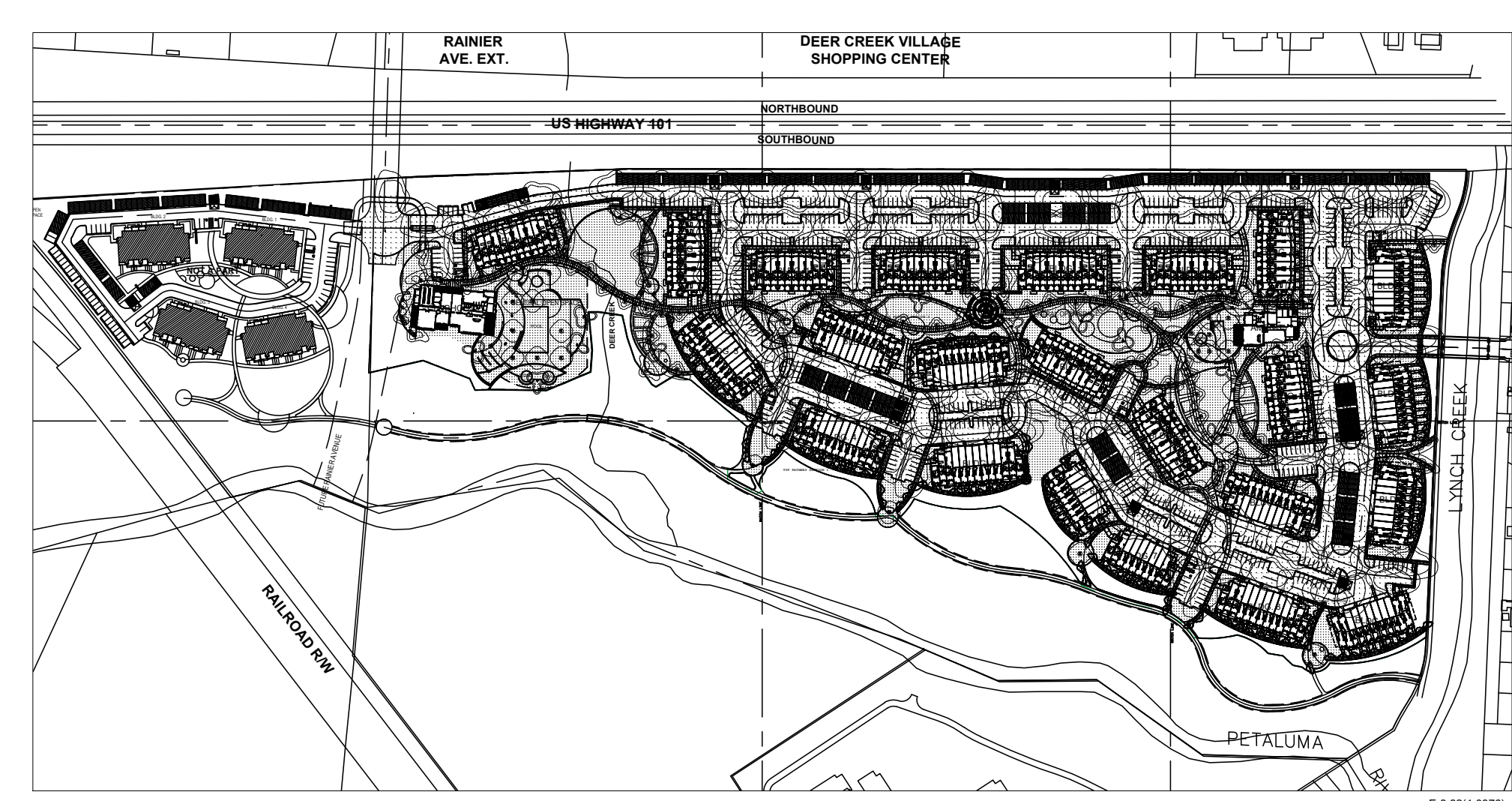
PLAN VIEW

Symbol	Qty	Label	Arrangement	Description	UDF**	LLF	Lum. Lumens	Lum. Watts	Tot. Watts	Data Source Filename
107	1	S1A	Single	OSRAM OPP-M-A08-R30-TM = 22" M.H.	N.A.	0.850	11507	74.41	7961.87	OPP-M-A08-R30-TM.lse
29	1	S1B	Single	OSRAM OPP-M-A08-R30-TM = 22" M.H.	N.A.	0.850	11415	74.41	7517.89	OPP-M-A08-R30-TM.lse
4	1	S1C	Single	OSRAM OPP-M-A08-R30-TM = 22" M.H.	N.A.	0.850	11568	74.41	297.64	OPP-M-A08-R30-TM.lse
81	2	S2A	Single	LUMEC VLC-291350W-G1-3-CAGE - 14"-8" L.C.	N.A.	0.850	2755	33	2673	vlc-291350w-g1-3-cage (crt1508171449-005-009m).lse
34	2	S2B	Single	LUMEC VLC-301350W-G1-3-CAGE - 14"-8" L.C.	N.A.	0.850	3007	35	1190	vlc-301350w-g1-3-cage (s1506063m).lse
12	1	S3	GROUP	BEGA 84 217-K3 8 14" M.H. - 84 216-K3 8 16" - 84 215-K3 8 18"	N.A.	0.850	5064	62	744	84215K3_BEGA_IS.lse/84216K3_BEGA_IS.lse/84217K3_BEGA_IS.lse
141	1	S4A	Single	LUMEC VBC-151350W-G1-3-CAGE - 2"-9" L.C.	N.A.	0.850	1068	18.1	2552.1	vbc-151350w-g1-3-cage (crt1508171449-006-009m).lse
8	1	S4B	Single	LUMEC VBC-151350W-G1-3-CAGE - 2"-9" L.C.	N.A.	0.850	1314	18.29	146.32	vbc-151350w-g1-3-cage (s1506111m).lse
340	1	S5	Single	BEGA 33 301-K3 - M.H. HARKES	N.A.	0.850	747	10.9	6104	33501_BEGA_IS.lse
81	1	S6	Single	DAY-BRITE FSX40CL830-DIM-DIM - 10" M.H.	0.950	0.807	3955	32.4	2424.4	FSX40CL830-DIM.lse

Note: Unless otherwise specified - the lamp lumen depreciation (LLD) for legacy sources used in these calculations is based on published mean lumen ratings by major lamp manufacturers: 0.90 LLD for pulse start metal halide; 0.90 LLD for high pressure sodium; 0.95 LLD for linear T8 and T5 fluorescent; 0.85 LLD for compact fluorescent and induction; 0.88 LLD for Cosmo and Elite lamps. 0.94 LLD for all LED sources. Unless otherwise noted - 0.90 luminaire dirt depreciation (LDD) is commonly applied. In cases where appropriate - ballast factor (BF) is applied. Additional user defined factors (UDF) may be applied if necessary to represent luminaire performance to a higher degree of accuracy. Total light loss factor (LLF) is the product of all multiplied loss factors.

Label	CalcType	Units	Avg	Max	Min	Avg/Min	Max/Min
TYP PARKING SECTION 1	ILLUMINANCE	Fc	2.02	8.3	0.4	5.05	20.75
TYP PARKING SECTION 2	ILLUMINANCE	Fc	2.50	8.3	0.5	5.00	16.60
TYP PARKING SECTION 3	ILLUMINANCE	Fc	2.15	9.7	0.9	2.39	4.11
TYP PARKING SECTION 4	ILLUMINANCE	Fc	2.99	9.2	0.6	4.98	15.33
TYP PATHWAY SECTION 1	ILLUMINANCE	Fc	2.68	5.6	0.5	5.36	11.20
TYP PATHWAY SECTION 2	ILLUMINANCE	Fc	1.47	2.7	0.6	2.45	4.50
TYP PATHWAY SECTION 3	ILLUMINANCE	Fc	2.33	3.1	1.8	1.29	1.72
TYP PATHWAY SECTION 4	ILLUMINANCE	Fc	3.28	4.6	1.7	1.93	2.71

LIGHTING PLAN - PHOTOMETRIC ANALYSIS - LAYOUT VERIFICATION
(ALL VALUES SHOWN ARE MAINTAINED HORIZONTAL FOOTCANDLES AT FINISHED GRADE, U.O.N.)



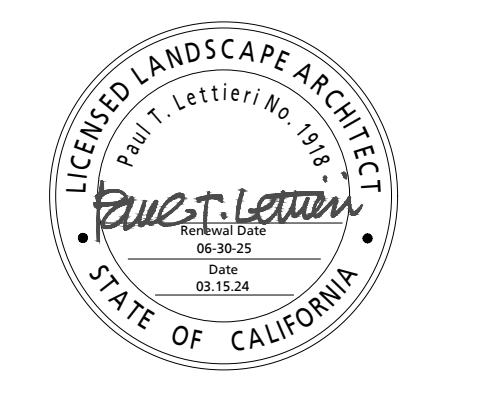
PRELIMINARY - NOT FOR CONSTRUCTION
NOT FOR QUOTING PURPOSES

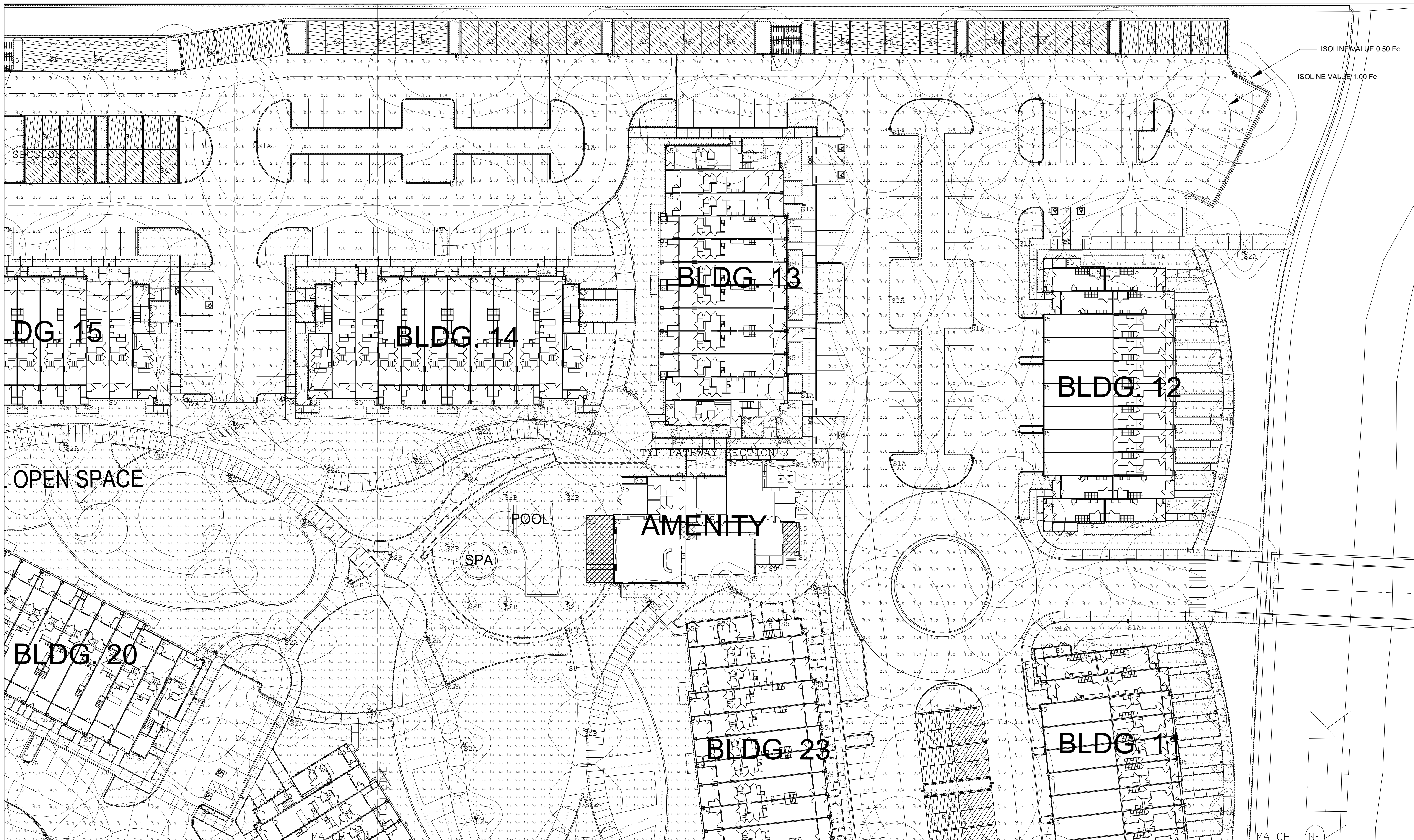
AIR Associated Lighting Representatives, Inc.
10000 Wilshire Blvd, Suite 1000, Beverly Hills, CA 90210
310.277.1000

Calculations have been performed according to IESNA standards and good practice. Photometric data used as input for these calculations is based on published data from manufacturers. The actual lighting conditions may vary from those shown on this plan due to site conditions, weather, and other factors. The lighting design is based on the best available information and is not a guarantee of performance. The lighting design is based on the best available information and is not a guarantee of performance.

Lighting Analysis
AG32 VERSION 20.0
AG32 LIGHTING ANALYSIS, INC. FROM REVOLVE SOFTWARE
888 UNIVERSITY AVENUE, SUITE 500, ARDENVILLE, LA 70705

PROJECT LOCATION: DEER CREEK APARTMENTS, PETALUMA, CA
DRAWING / INPUT FILE: 22487HAL-R2 DWG/A32
DATE: 03-21-2024
SCALE: 1" = 20'-0"
SHEET: 2 OF 5
APPLICATOR ENGINEERS: HUNTER SIMMERS, ASSOCIATED LIGHTING REPRESENTATIVES, INC.





SCALE: 1" = 20'-0"

PLAN VIEW

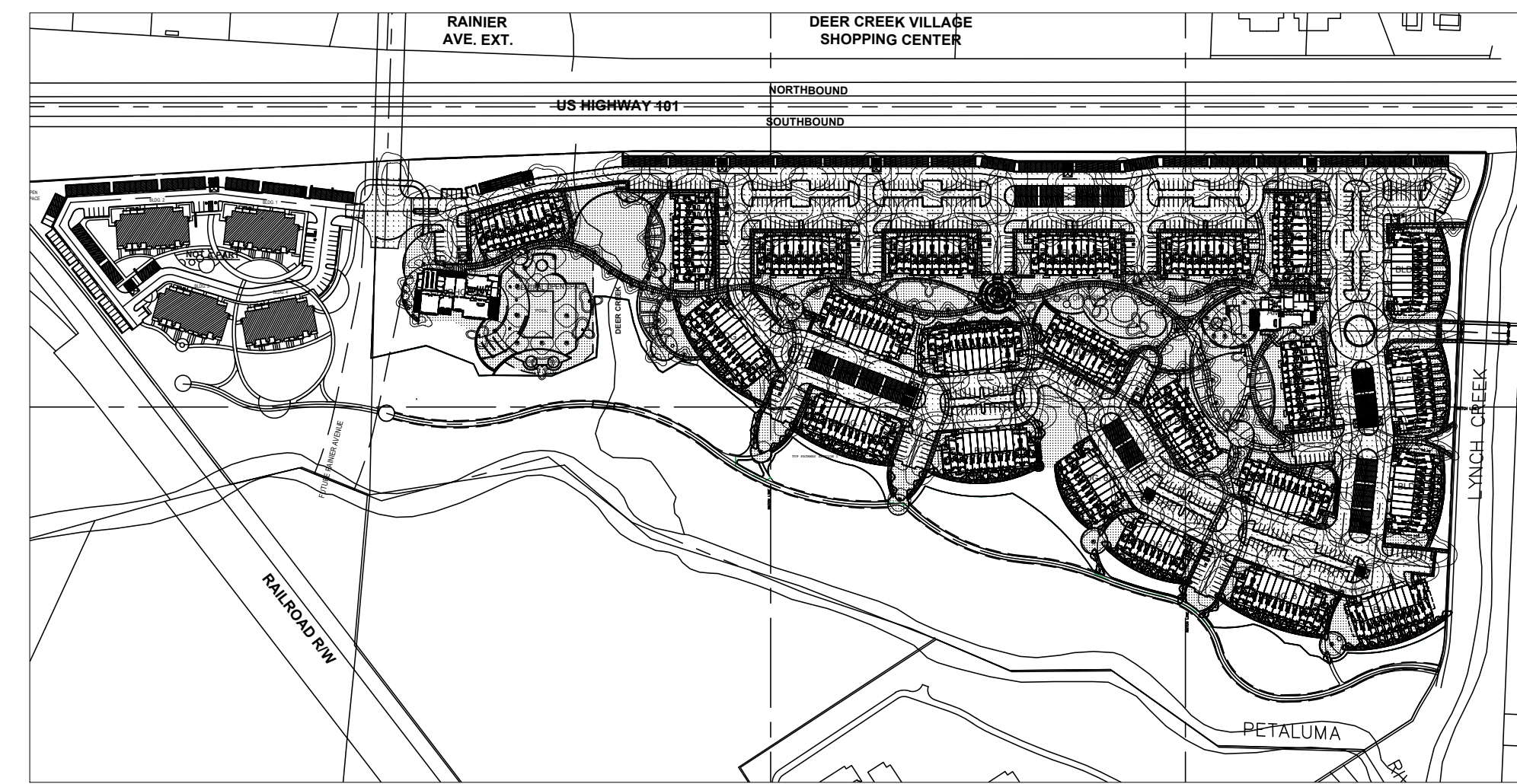
Symbol	Qty	Label	Arrangement	Description	UDF *	LLF	Lum. Lumens	Lum. Watts	Tot. Watts	Data Source Filename
■	107	S1A	Single	GARDCO OFF-M-A08-R30-T2M - 22" M.H.	N.A.	0.850	11507	74.41	7961.87	OFF-M-A08-R30-T2M.ies
■	29	S1B	Single	GARDCO OFF-M-A08-R30-T2M - 22" M.H.	N.A.	0.850	11415.8	74.41	2157.89	OFF-M-A08-R30-T2M.ies
■	4	S1C	Single	GARDCO OFF-M-A08-R30-T4M - 22" M.H.	N.A.	0.850	11468	74.41	297.64	OFF-M-A08-R30-T4M.ies
○	91	S2A	Single	LUMEC V1C-29L350W-G1-3-CAGE - 14"×8" L.C.	N.A.	0.850	2755	33	2673	v1c-29l350w-g1-3-cage (crr1508171449-005-009em).ies
○	34	S2B	Single	LUMEC V1C-29L350W-G1-3-CAGE - 14"×8" L.C.	N.A.	0.850	3007	35	1190	v1c-29l350w-g1-3-cage (e1506063m).ies
○	12	S3	GROUP	BEGA 84 217-K3 8 14" M.H. - 84 216-K3 8 16" - 84 215-K3 8 18"	N.A.	0.850	5064	62	744	84215K3_BEGA_ISB.ies; 84216K3_BEGA_ISB.ies; 84217K3_BEGA_ISB.ies
○	141	S4A	Single	LUMEC V1C-15L350W-G1-3-CAGE - 2'×9" L.C.	N.A.	0.850	1068	18.1	2552.1	v1c-15l350w-g1-3-cage (crr1508171449-006-009fm).ies
○	8	S4B	Single	LUMEC V1C-15L350W-G1-3-CAGE - 2'×9" L.C.	N.A.	0.850	1334	18.29	146.32	v1c-15l350w-g1-3-cage (e150611m).ies
○	58	S5	Single	BEGA 33 581-K3 - W.H. VARIOS	N.A.	0.850	747	10.9	6104	33581_BEGA_ISB.ies
○	11	S6	Single	DAY-BRITE 82X40L830-DW-DIM - 10" M.H.	0.950	0.807	3955	32.4	2624.4	PSX40L830-DWV.ies

Note: Unless otherwise specified - the lamp lumen depreciation (LLD) for legacy sources used in these calculations is based on published mean lumen ratings by major lamp manufacturers: 0.80 LLD for pulse start metal halide; 0.90 LLD for high pressure sodium; 0.95 LLD for linear 18 and T5 fluorescent; 0.86 LLD for compact fluorescent and induction; 0.88 LLD for Cosmo and Etic lamps; 0.94 LLD for all LED sources. Unless otherwise noted - 0.90 luminaire dirt depreciation (LDD) is commonly applied. In cases where appropriate - ballast factor (BF) is applied. Additional user defined factors (UDF) may be applied if necessary to represent luminaire performance to a higher degree of accuracy. Total light loss factor (LLF) is the product of all multiplied loss factors.

Label	CalcType	Units	Avg	Max	Min	Avg/Min	Max/Min
TYP PARKING SECTION 1	Illuminance	Fc	2.02	8.3	0.4	5.05	20.75
TYP PARKING SECTION 2	Illuminance	Fc	2.50	8.3	0.5	5.00	16.60
TYP PARKING SECTION 3	Illuminance	Fc	2.15	3.7	0.9	2.39	4.11
TYP PARKING SECTION 4	Illuminance	Fc	2.99	9.2	0.6	4.98	15.33
TYP PATHWAY SECTION 1	Illuminance	Fc	2.68	5.6	0.5	5.36	11.20
TYP PATHWAY SECTION 2	Illuminance	Fc	1.47	2.7	0.6	2.45	4.50
TYP PATHWAY SECTION 3	Illuminance	Fc	2.33	3.1	1.8	1.29	1.72
TYP PATHWAY SECTION 4	Illuminance	Fc	3.28	4.6	1.7	1.93	2.71

LIGHTING PLAN - PHOTOMETRIC ANALYSIS - LAYOUT VERIFICATION

(ALL VALUES SHOWN ARE MAINTAINED HORIZONTAL FOOTCANDLES AT FINISHED GRADE, U.O.N.)



PRELIMINARY - NOT FOR CONSTRUCTION
NOT FOR QUOTING PURPOSES

AR Associated Lighting Representatives, Inc.
 10000 Wilshire Blvd, Suite 1000
 Beverly Hills, CA 90210
 (310) 477-1111
 www.arlighting.com

THIS DOCUMENT IS THE PROPERTY OF ASSOCIATED LIGHTING REPRESENTATIVES, INC. IT IS TO BE USED ONLY FOR THE PROJECT AND SITE SPECIFICALLY IDENTIFIED HEREIN. IT IS NOT TO BE REPRODUCED, COPIED, OR TRANSMITTED IN ANY FORM OR BY ANY MEANS, WITHOUT THE WRITTEN PERMISSION OF ASSOCIATED LIGHTING REPRESENTATIVES, INC. THE USER ASSUMES ALL LIABILITY FOR THE USE OF THIS DOCUMENT AND THE INFORMATION CONTAINED HEREIN.

Lighting Analysis
 ACCENTSCAPES
 8800 BAYVIEW DRIVE, SUITE 500, JACKSONVILLE, FL 32216
 (904) 421-1111
 www.accentscapes.com

REPORT FOR: ACCENTSCAPES
 PROJECT: DEER CREEK APARTMENTS
 LOCATION: PETALUMA, CA
 DRAWING: 2248THALR2.DWG A32
 DATE: 03-21-2024
 SCALE: 1" = 20'-0"
 SHEET: 3 OF 5
 DRAWN BY: HUNTER SUMMERS
 CHECKED BY: ASSOCIATED LIGHTING REPRESENTATIVES, INC.





SCALE: 1" = 20'-0"

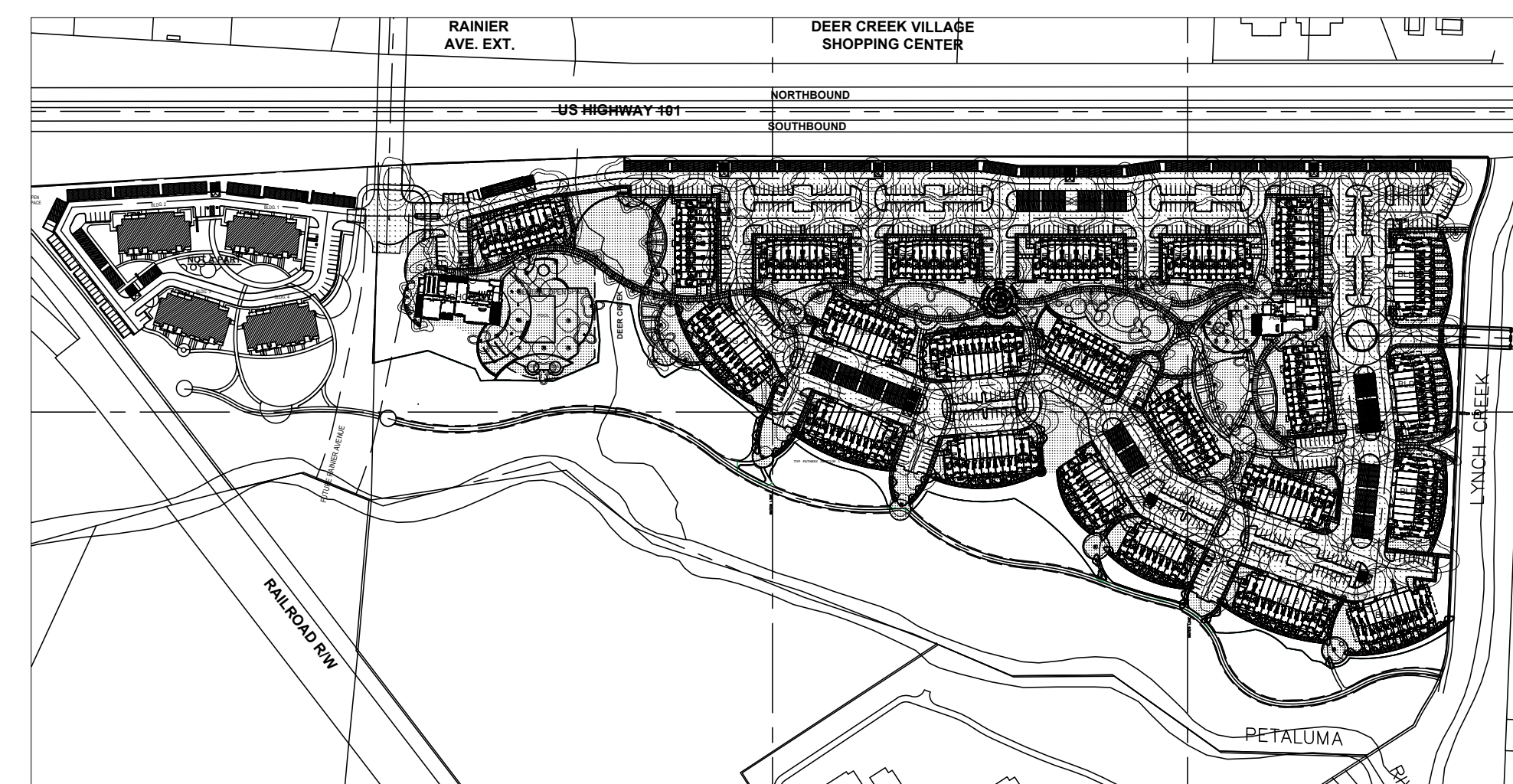
PLAN VIEW

Symbol	Qty	Label	Arrangement	Description	UDF *	LLF	Lum. Lumens	Lum. Watts	Tot. Watts	Data Source Filename
107	81A	Single	GARDOO OFF-M-A08-830-T2M - 22' H.N.	R.A.	0.850	11507	74.41	7961.87	OFF-M-A08-830-T2M.ies	
29	81B	Single	GARDOO OFF-M-A08-830-T2M - 22' H.N.	R.A.	0.850	11415	74.41	2157.89	OFF-M-A08-830-T2M.ies	
4	81C	Single	GARDOO OFF-M-A08-830-T2M - 22' H.N.	R.A.	0.850	11568	74.41	297.44	OFF-M-A08-830-T2M.ies	
81	82A	Single	LZMBC VLC-291350Ww-G1-3-CAGE - 14'-8" L.C.	R.A.	0.850	2755	33	2673	vlc-291350w-g1-3-cage (crt150817449-005-009em).ies	
34	82B	Single	LZMBC VLC-301350Ww-G1-5-CAGE - 14'-8" L.C.	R.A.	0.850	3007	35	1190	vlc-301350w-g1-5-cage (s1506063m).ies	
12	83	GROUP	BEGA 84 217-K3 8 14' H.N. - 84 216-K3 8 16' - 84 215-K3 8 18'	R.A.	0.850	5064	62	744	8421583_BEGA.ies/84216K3_BEGA.ies/84217K3_BEGA.ies.ies	
141	84A	Single	LZMBC VBC-151350Ww-G1-3-CAGE - 2'-9" L.C.	R.A.	0.850	1068	18.1	2552.1	vbc-151350w-g1-3-cage (crt150817449-006-009fm).ies	
8	84B	Single	LZMBC VBC-151350Ww-G1-5-CAGE - 2'-9" L.C.	R.A.	0.850	1314	18.29	146.32	vbc-151350w-g1-5-cage (s150611m).ies	
560	85	Single	BEGA 33 581-K3 - R.N. VAR18S	R.A.	0.850	747	10.9	6104	33581_BEGA.ies	
81	86	Single	DAI-WHITE F8X40L830-DRV-DIM - 10' H.N.	R.A.	0.950	807	39.55	2624.4	F8X40L830-DRV.ies	

* UDF FACTOR PROPORTED TO SIMULATE 3000K CCT OPTION

Note: Unless otherwise specified - the lamp lumen depreciation (LLD) for legacy sources used in these calculations is based on published mean lumen ratings by major lamp manufacturers: 0.80 LLD for pulse start metal halide; 0.90 LLD for high pressure sodium; 0.95 LLD for linear T8 and T5 fluorescent; 0.86 LLD for compact fluorescent and induction; 0.88 LLD for Cosmo and Elite lamps; 0.94 LLD for all LED sources. Unless otherwise noted - 0.90 luminaire dirt depreciation (LDD) is commonly applied. In cases where appropriate - ballast factor (BF) is applied. Additional user defined factors (UDF) may be applied if necessary to represent luminaire performance to a higher degree of accuracy. Total light loss factor (LLF) is the product of all multiplied loss factors.

Label	CalcType	Units	Avg	Max	Min	Avg/Min	Max/Min
TYP PARKING SECTION 1	Illuminance	Fc	2.02	8.3	0.4	5.05	20.75
TYP PARKING SECTION 2	Illuminance	Fc	2.50	8.3	0.5	5.00	16.60
TYP PARKING SECTION 3	Illuminance	Fc	2.15	3.7	0.9	2.39	4.11
TYP PARKING SECTION 4	Illuminance	Fc	2.99	9.2	0.6	4.98	15.33
TYP PATHWAY SECTION 1	Illuminance	Fc	2.68	5.6	0.5	5.36	11.20
TYP PATHWAY SECTION 2	Illuminance	Fc	1.47	2.7	0.6	2.45	4.50
TYP PATHWAY SECTION 3	Illuminance	Fc	2.33	3.1	1.8	1.29	1.72
TYP PATHWAY SECTION 4	Illuminance	Fc	3.28	4.6	1.7	1.93	2.71



LIGHTING PLAN - PHOTOMETRIC ANALYSIS - LAYOUT VERIFICATION

(ALL VALUES SHOWN ARE MAINTAINED HORIZONTAL FOOTCANDLES AT FINISHED GRADE, U.O.N.)

PRELIMINARY - NOT FOR CONSTRUCTION
NOT FOR QUOTING PURPOSES

Associated Lighting Representatives, Inc.
AIR

Calculations have been performed according to IESNA standards and good practice. Measurements in residential parking, lighting parameters, computer performance, and other information. This information is provided for informational purposes only. The actual lighting conditions may vary due to site conditions and other factors.

AG32 - VERSION 2019 REALIZE SOFTWARE
8800 BAYMEADOWS WAY WEST, SUITE 600, JACKSONVILLE, FL 32256

Lighting Analysis
AG32 - VERSION 2019 REALIZE SOFTWARE
8800 BAYMEADOWS WAY WEST, SUITE 600, JACKSONVILLE, FL 32256

REPORT FOR:
ACCENTSCAPES
SALES REPRESENTATIVE:
TIM HALEY
ASSOCIATED LIGHTING REPRESENTATIVES, INC.
PROJECT NO.:
22487HALRZ.DWG A32

PROJECT DESCRIPTION:
DEER CREEK APARTMENTS
PETALUMA, CA
DRAWING: IMPR FILE
DATE:
03-21-2024
SCALE:
1" = 20'-0"
SHEET:
4 OF 5
REV:
2





SCALE: 1" = 20'-0"

PLAN VIEW

Symbol	Qty	Label	Arrangement	Description	UDF *	LLF	Lum. Lumens	Lum. Watts	Tot. Watts	Data Source Filename
157	S1A	Single	GARDCO OFF-M-A08-830-TM = 22" M.H.	N.A.	0.850	11507	74.41	7961.89	OFF-M-A08-830-TM.ies	
29	S1B	Single	GARDCO OFF-M-A08-830-TM = 22" M.H.	N.A.	0.850	11415	74.41	2157.89	OFF-M-A08-830-TM.ies	
4	S1C	Single	GARDCO OFF-M-A08-830-TM = 22" M.H.	N.A.	0.850	11568	74.41	297.64	OFF-M-A08-830-TM.ies	
81	S2A	Single	LUMEC VLC-29L350W-01-3-CAGE - 14"-8" L.C.	N.A.	0.850	2755	33	2673	vlc-29l350w-01-3-cage (txt1508171449-005-009em).ies	
34	S2B	Single	LUMEC VLC-30L350W-01-5-CAGE - 14"-8" L.C.	N.A.	0.850	3007	35	1190	vlc-30l350w-01-5-cage (tel506063m).ies	
12	S3	GROUP	BEGA 84 217-K3 8 14" M.H. = 84 216-K3 8 16" = 84 215-K3 8 18"	N.A.	0.850	5064	62	744	84215K3_BEGA.ies;84216K3_BEGA.ies;84217K3_BEGA.ies	
141	S4A	Single	LUMEC VBC-15L350W-01-3-CAGE - 2"-9" L.C.	N.A.	0.850	1068	18.1	2552.1	vbc-15l350w-01-3-cage (txt1508171449-006-009fm).ies	
8	S4B	Single	LUMEC VBC-15L350W-01-3-CAGE - 2"-9" L.C.	N.A.	0.850	1314	18.29	146.32	vbc-15l350w-01-3-cage (tel50611m).ies	
560	S5	Single	BEGA 33 3S1-K3 = M.H. VARIES	N.A.	0.850	747	10.9	6104	33581_BEGA.ies	
81	S6	Single	DAY-BRITE PSK40L830-UNV-DEM - 10" M.H.	0.950	0.807	3955	32.4	2424.4	PSK40L830-UNV.ies	

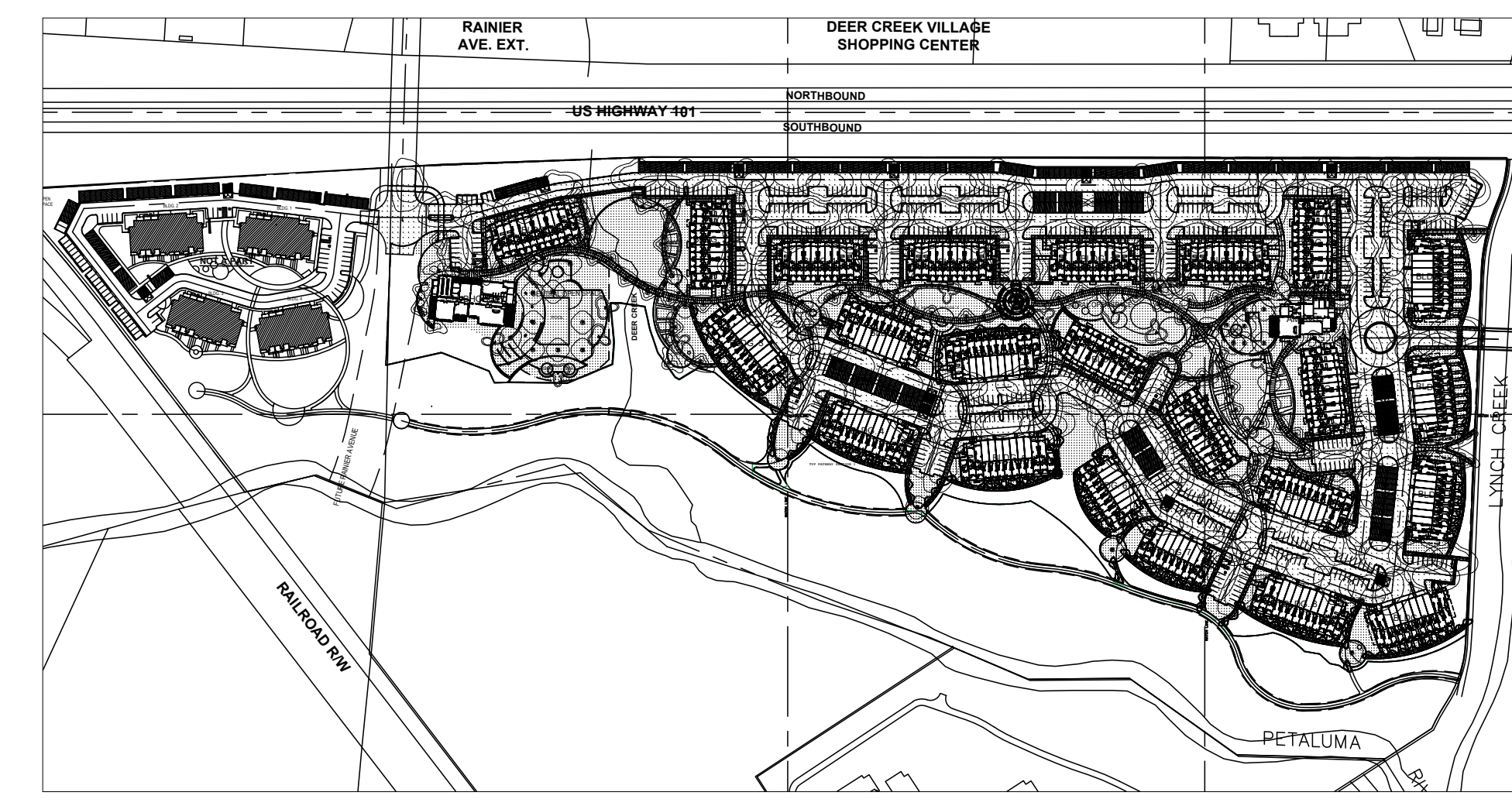
* UDF FACTOR PROPORTED TO SIMULATE 3000K CCT OPTION

Label	CalcType	Units	Avg	Max	Min	Avg/Min	Max/Min
TYP PARKING SECTION 1	Illuminance	Fc	2.02	8.3	0.4	5.05	20.75
TYP PARKING SECTION 2	Illuminance	Fc	2.50	8.3	0.5	5.50	16.60
TYP PARKING SECTION 3	Illuminance	Fc	2.15	3.7	0.9	2.39	4.11
TYP PARKING SECTION 4	Illuminance	Fc	2.99	9.2	0.6	4.98	15.33
TYP PATHWAY SECTION 1	Illuminance	Fc	2.68	5.6	0.5	5.36	11.20
TYP PATHWAY SECTION 2	Illuminance	Fc	1.47	2.7	0.6	2.45	4.50
TYP PATHWAY SECTION 3	Illuminance	Fc	2.33	3.1	1.8	1.29	1.72
TYP PATHWAY SECTION 4	Illuminance	Fc	3.28	4.6	1.7	1.93	2.71

Note: Unless otherwise specified - the lamp lumen depreciation (LLD) for legacy sources used in these calculations is based on published mean lumen ratings by major lamp manufacturers; 0.80 LLD for pulse start metal halide; 0.90 LLD for high pressure sodium; 0.95 LLD for linear T8 and T5 fluorescent; 0.86 LLD for compact fluorescent and induction; 0.88 LLD for Cosmo and Elite lamps. 0.94 LLD for all LED sources. Unless otherwise noted - 0.90 luminaire dirt depreciation (LDD) is commonly applied. In cases where appropriate - ballast factor (BF) is applied. Additional user defined factors (UDF) may be applied if necessary to represent luminaire performance to a higher degree of accuracy. Total light loss factor (LLF) is the product of all multiplied loss factors.

LIGHTING PLAN - PHOTOMETRIC ANALYSIS - LAYOUT VERIFICATION

(ALL VALUES SHOWN ARE MAINTAINED HORIZONTAL FOOTCANDLES AT FINISHED GRADE, U.O.N.)



PRELIMINARY - NOT FOR CONSTRUCTION
NOT FOR QUOTING PURPOSES

AIR Associated Lighting Representatives, Inc.
 10000 Wilshire Blvd., Suite 1000, Beverly Hills, CA 90210
 310.206.1111
 www.airlighting.com

PHOTOMETRIC DATA USED IN THESE CALCULATIONS IS BASED ON ESTABLISHED TESTING PROCEDURES AND MEASUREMENT TECHNIQUES AND DOES NOT REPRESENT ACTUAL LAMP, BALLAST, ELECTRICAL, AND SITE CHARACTERISTICS.

Lighting Analysis
 AG32
 ASSOCIATED LIGHTING REPRESENTATIVES, INC.
 HUNTER SIMMERS
 ASSOCIATED LIGHTING REPRESENTATIVES, INC.

PROJECT DESCRIPTION: DEER CREEK APARTMENTS, PETALUMA, CA
 DRAWING: 22487HAL-02 DWG/A32
 DATE: 03-21-2024
 SCALE: 1" = 20'-0"
 SHEET: 5 OF 5
 REV: 2

