

KEY MAP

L-5.1

Scale: 1" = 20'

© 2020 by HUMPHREYS & PARTNERS ARCHITECTS, L.P. The arrangements depicted herein are the sole property of Humphreys & Partners Architects, L.P. and may not be reproduced in any form without its written permission. Architectural conceptual site plans are for feasibility purpose only. Revisions may occur due to further investigation from regulatory authorities and building code analysis.



KEY MAP

L-5.2

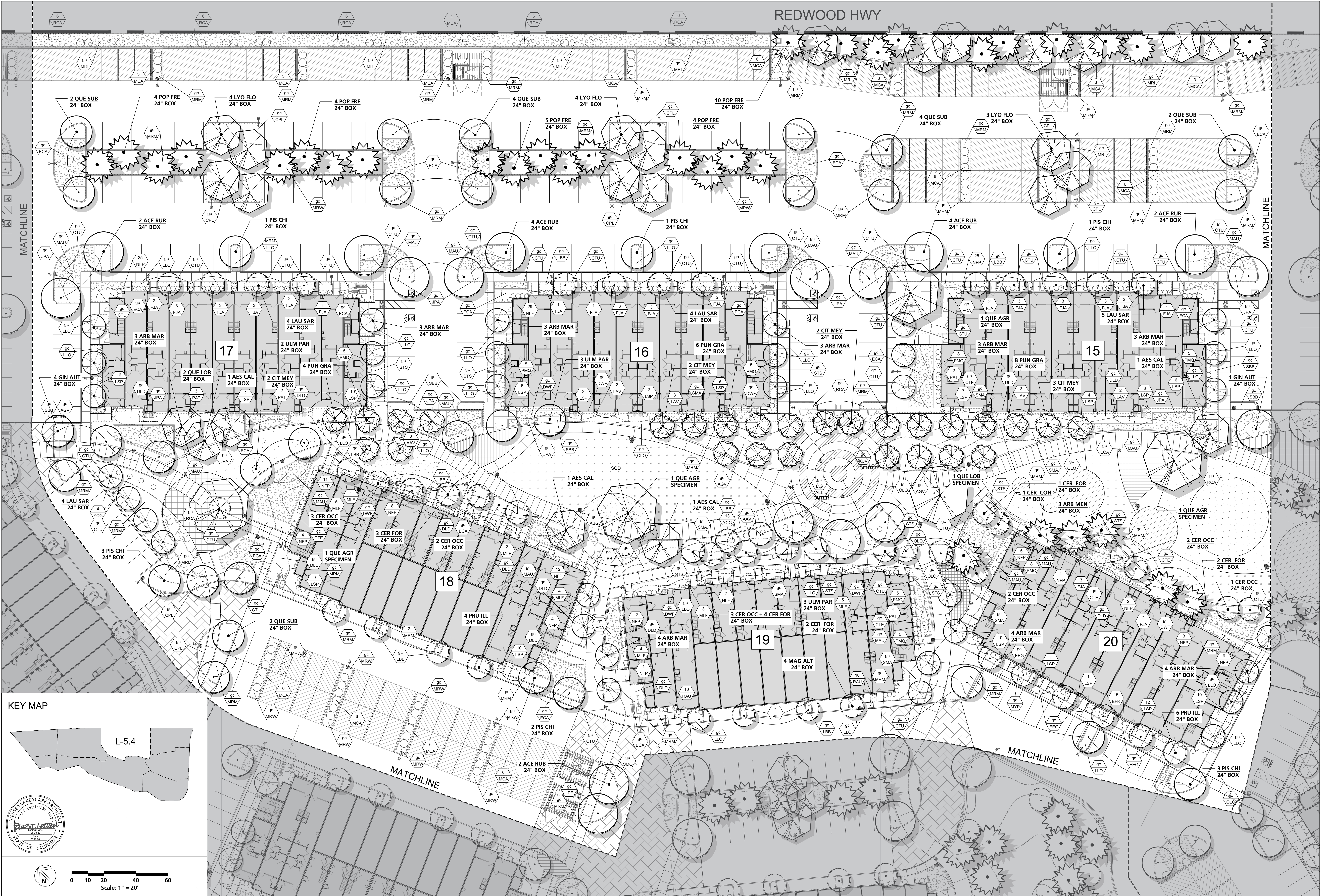
© 2020 by HUMPHREYS & PARTNERS ARCHITECTS, L.P. The arrangements depicted herein are the sole property of Humphreys & Partners Architects, L.P. and may not be reproduced in any form without its written permission. Architectural conceptual site plans are for feasibility purpose only. Revisions may occur due to further investigation from regulatory authorities and building code analysis.



KEY MAP

L-5.3

© 2020 by HUMPHREYS & PARTNERS ARCHITECTS, L.P. The arrangements depicted herein are the sole property of Humphreys & Partners Architects, L.P. and may not be reproduced in any form without its written permission. Architectural conceptual site plans are for feasibility purpose only. Revisions may occur due to further investigation from regulatory authorities and building code analysis.



KEY MAP

L-5.4

Scale: 1" = 20'

© 2020 by HUMPHREYS & PARTNERS ARCHITECTS, L.P. The arrangements depicted herein are the sole property of Humphreys & Partners Architects, L.P. and may not be reproduced in any form without its written permission. Architectural conceptual site plans are for feasibility purpose only. Revisions may occur due to further investigation from regulatory authorities and building code analysis.



KEY MAP

L-5.5

Scale: 1" = 20'

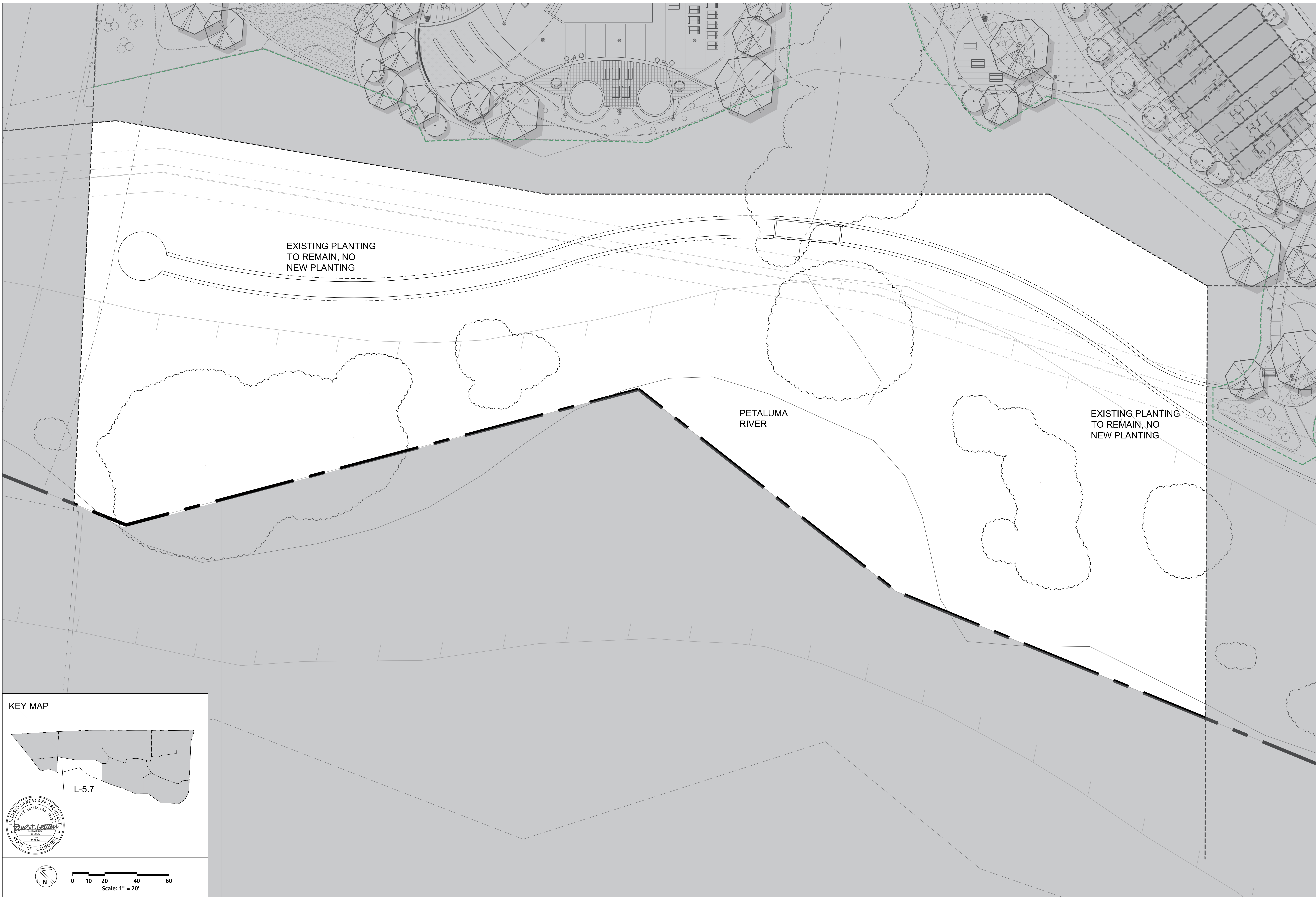


KEY MAP

L-5.6

West Leathers
LICENSED LANDSCAPE ARCHITECT
No. 10187
STATE OF CALIFORNIA

Scale: 1" = 20'



EXISTING PLANTING
TO REMAIN, NO
NEW PLANTING

PETALUMA
RIVER

EXISTING PLANTING
TO REMAIN, NO
NEW PLANTING

KEY MAP

L-5.7

© 2020 by HUMPHREYS & PARTNERS ARCHITECTS, L.P. The arrangements depicted herein are the sole property of Humphreys & Partners Architects, L.P. and may not be reproduced in any form without its written permission. Architectural conceptual site plans are for feasibility purpose only. Revisions may occur due to further investigation from regulatory authorities and building code analysis.