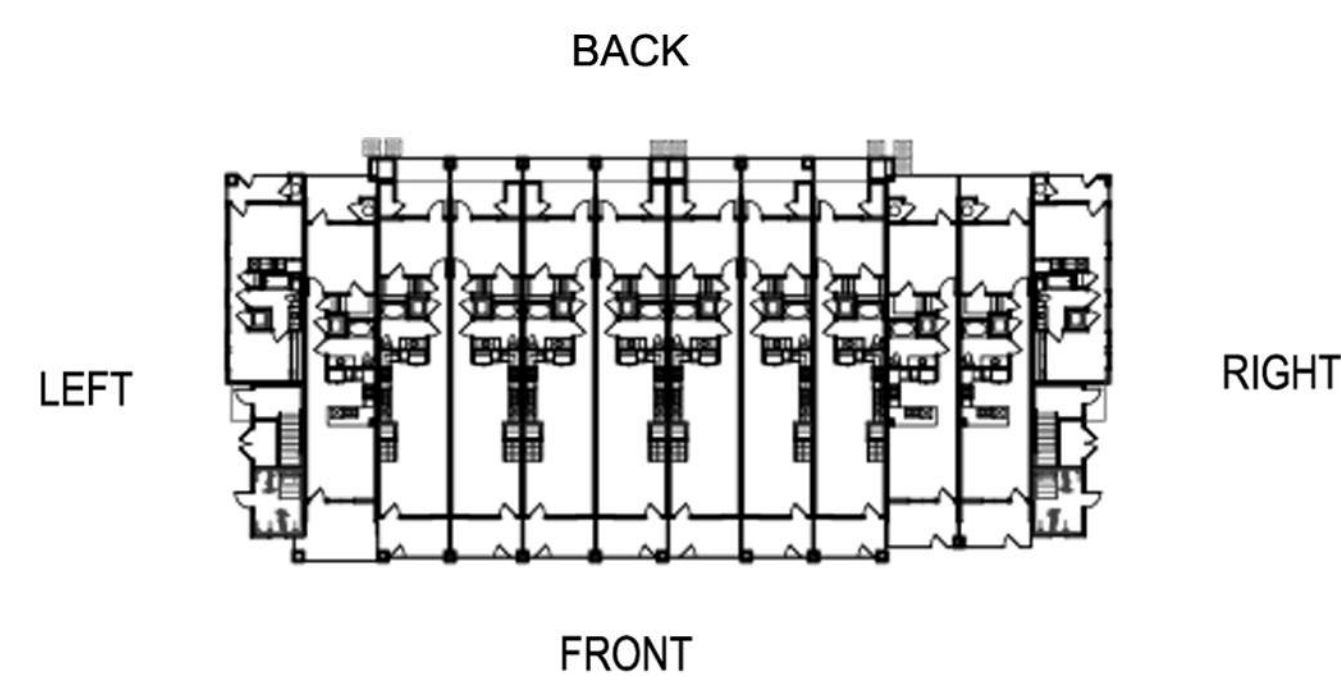
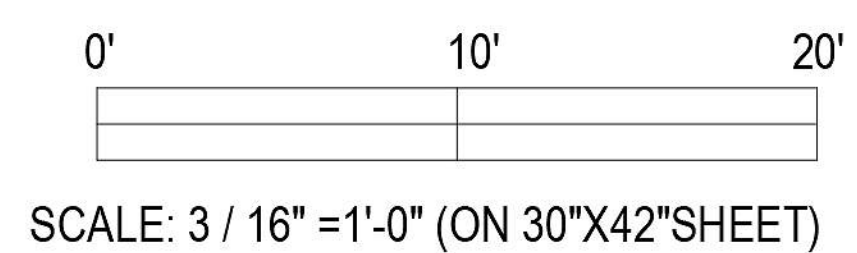




CHARACTER ELEVATION -  
BLDG. TYPE A (FRONT)

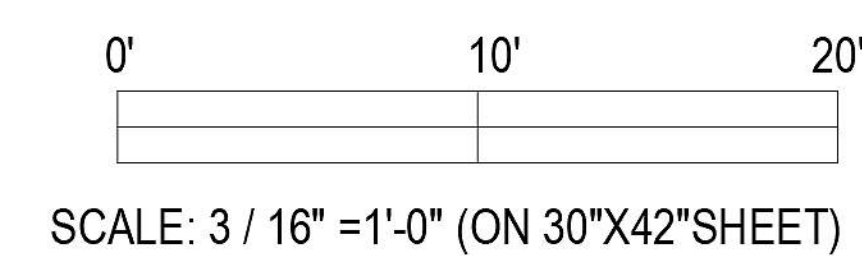


MATERIAL & COLOR

- |  |  |
|--|--|
| 1. HORIZONTAL SIDING   | A. SHERWIN WILLIAMS<br>WHITE SNOW SW9541   |
| 2. BOARD AND BATTEN  | B. SHERWIN WILLIAMS<br>SUMMER WHITE SW7557 |
| 3. ROOF SHINGLE<br>GAF TIMBERLINE<br>COLOR: PEWTER GRAY            | C. SHERWIN WILLIAMS<br>BEACH HOUSE SW7518  |
| 4. CORRUGATED METAL<br>COLOR: GREY                                 | D. SHERWIN WILLIAMS<br>JUTE BROWN SW6096   |
| 5. COMPOSITE WOOD RAILING  | E. SHERWIN WILLIAMS<br>PERLE NOIR SW9154   |
| 6. PAINTED TRIM<br>COLOR: SHERWIN WILLIAMS<br>TRICORN BLACK SW6258 |  |
| 7. PAINTED POST<br>SHERWIN WILLIAMS<br>TRICORN BLACK SW6258        |  |
| 8. VINYL WINDOW  |  |



CHARACTER ELEVATION -  
BLDG. TYPE A (RIGHT)

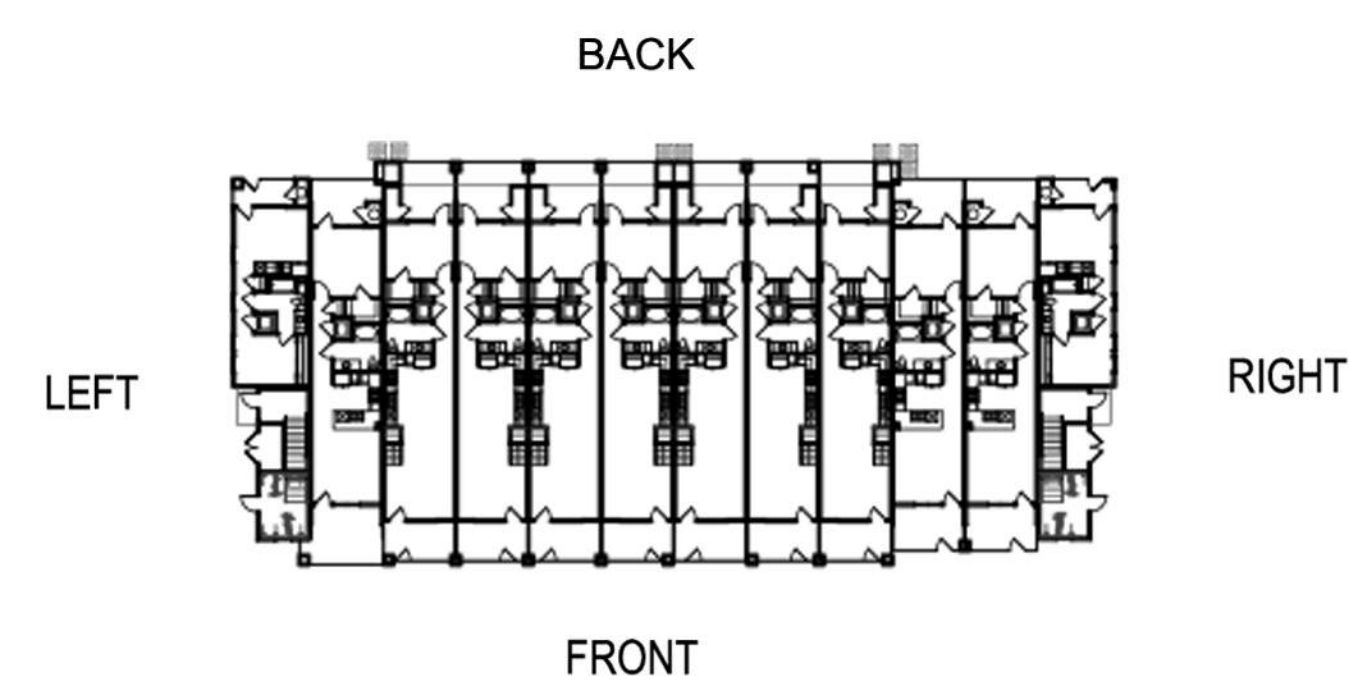
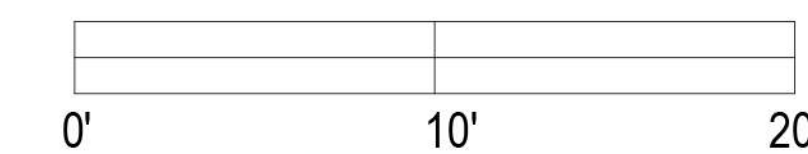






CHARACTER ELEVATION -  
BLDG. TYPE A (BACK)

SCALE: 3 / 16" = 1'-0" (ON 30"X42" SHEET)



MATERIAL & COLOR

- |  |  |
|--|--|
| 1. HORIZONTAL SIDING   | A. SHERWIN WILLIAMS<br>WHITE SNOW SW9541   |
| 2. BOARD AND BATTEN  | B. SHERWIN WILLIAMS<br>SUMMER WHITE SW7557 |
| 3. ROOF SHINGLE  | C. SHERWIN WILLIAMS<br>BEACH HOUSE SW7518  |
| GAF TIMBERLINE<br>COLOR: PEWTER GRAY                               | D. SHERWIN WILLIAMS<br>JUTE BROWN SW6096   |
| 4. CORRUGATED METAL<br>COLOR: GREY                                 | E. SHERWIN WILLIAMS<br>PERLE NOIR SW9154   |
| 5. COMPOSITE WOOD RAILING  |  |
| 6. PAINTED TRIM<br>COLOR: SHERWIN WILLIAMS<br>TRICORN BLACK SW6258 |  |
| 7. PAINTED POST<br>SHERWIN WILLIAMS<br>TRICORN BLACK SW6258        |  |
| 8. VINYL WINDOW  |  |



CHARACTER ELEVATION -  
BLDG. TYPE A (LEFT)

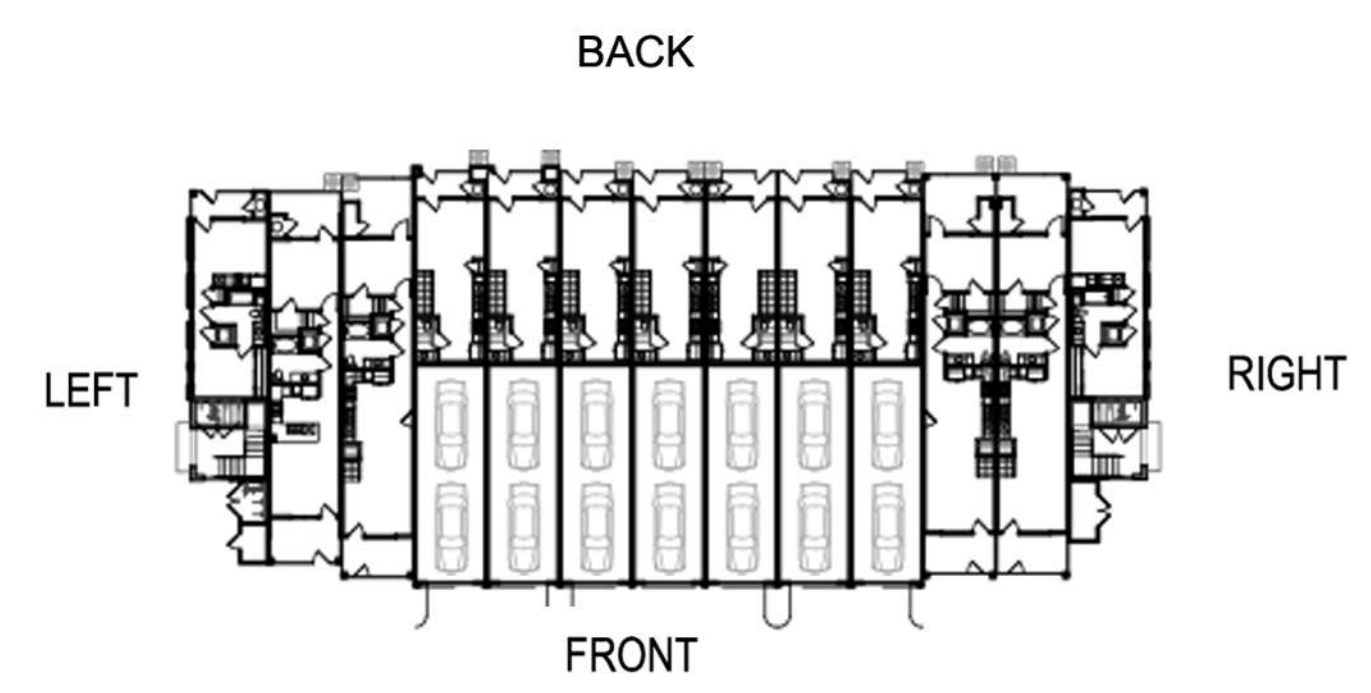
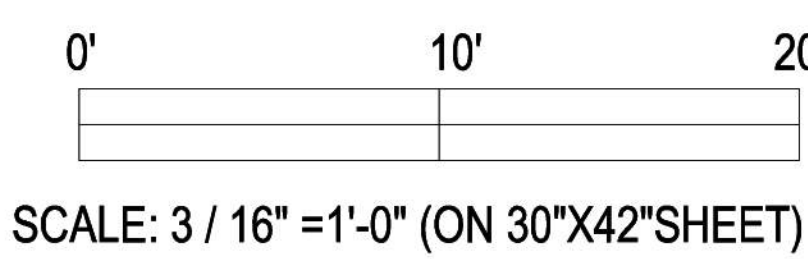
SCALE: 3 / 16" = 1'-0" (ON 30"X42" SHEET)







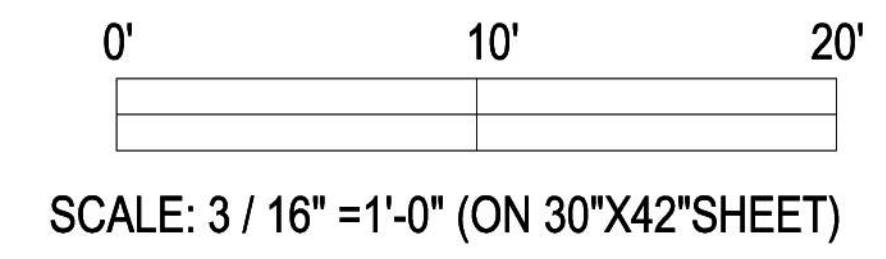
CHARACTER ELEVATION -  
BLDG. TYPE B (FRONT)



- MATERIAL & COLOR**
- 1. HORIZONTAL SIDING
  - 2. BOARD AND BATTEN
  - 3. ROOF SHINGLE  
GAF TIMBERLINE  
COLOR: PEWTER GRAY
  - 4. CORRUGATED METAL  
COLOR: GREY
  - 5. COMPOSITE WOOD RAILING
  - 6. PAINTED TRIM  
COLOR: SHERWIN WILLIAMS  
TRICORN BLACK SW6258
  - 7. PAINTED POST  
SHERWIN WILLIAMS  
TRICORN BLACK SW6258
  - 8. VINYL WINDOW
- A. SHERWIN WILLIAMS  
WHITE SNOW SW9541
  - B. SHERWIN WILLIAMS  
SUMMER WHITE SW7557
  - C. SHERWIN WILLIAMS  
BEACH HOUSE SW7518
  - D. SHERWIN WILLIAMS  
JUTE BROWN SW6096
  - E. SHERWIN WILLIAMS  
PERLE NOIR SW9154



CHARACTER ELEVATION -  
BLDG. TYPE B (RIGHT)

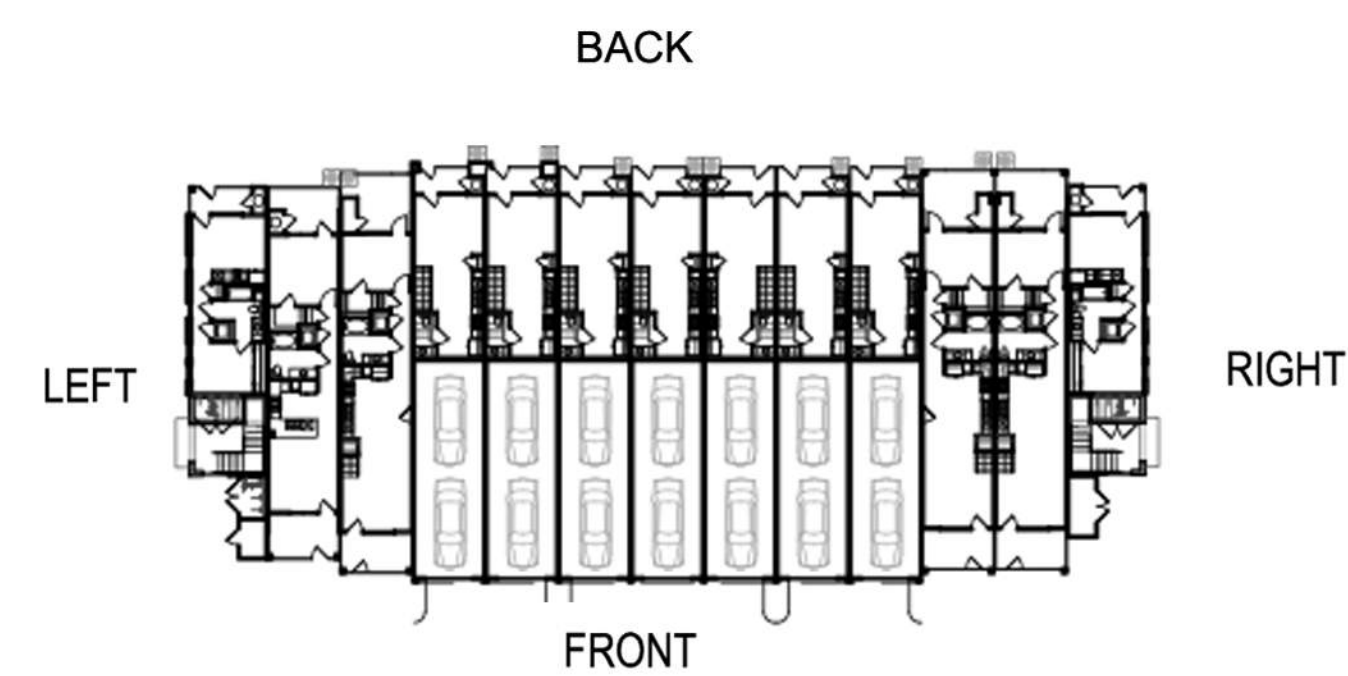
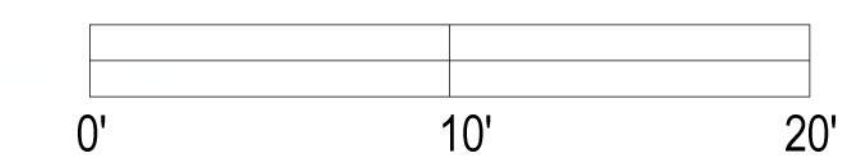






CHARACTER ELEVATION -  
BLDG. TYPE B (BACK)

SCALE: 3 / 16" = 1'-0" (ON 30"x42" SHEET)

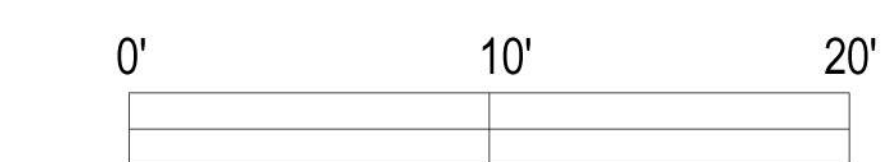


MATERIAL & COLOR

- |  |  |
|--|--|
| 1. HORIZONTAL SIDING   | A. SHERWIN WILLIAMS<br>WHITE SNOW SW9541   |
| 2. BOARD AND BATTEN  | B. SHERWIN WILLIAMS<br>SUMMER WHITE SW7557 |
| 3. ROOF SHINGLE<br>GAF TIMBERLINE                                  | C. SHERWIN WILLIAMS<br>BEACH HOUSE SW7518  |
| COLOR: PEWTER GRAY   | D. SHERWIN WILLIAMS<br>JUTE BROWN SW6096   |
| 4. CORRUGATED METAL<br>COLOR: GREY                                 | E. SHERWIN WILLIAMS<br>PERLE NOIR SW9154   |
| 5. COMPOSITE WOOD RAILING  |  |
| 6. PAINTED TRIM<br>COLOR: SHERWIN WILLIAMS<br>TRICORN BLACK SW6258 |  |
| 7. PAINTED POST<br>SHERWIN WILLIAMS<br>TRICORN BLACK SW6258        |  |
| 8. VINYL WINDOW  |  |



CHARACTER ELEVATION -  
BLDG. TYPE B (LEFT)



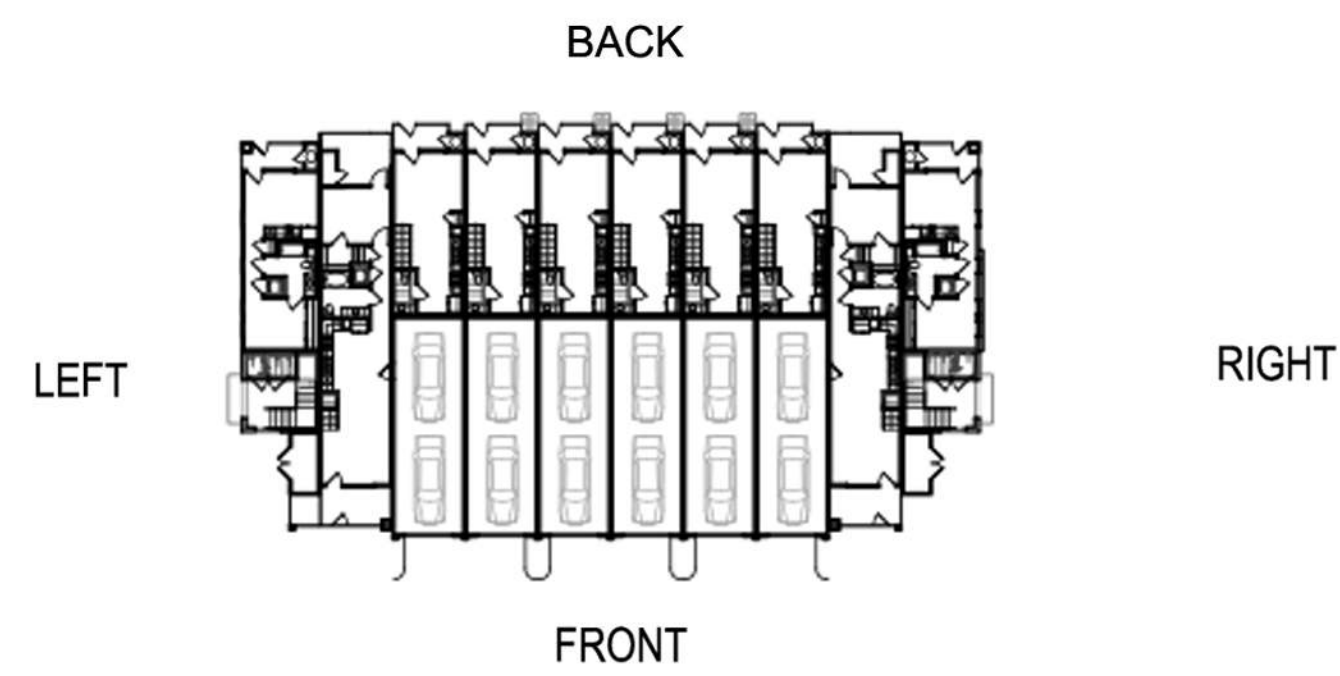
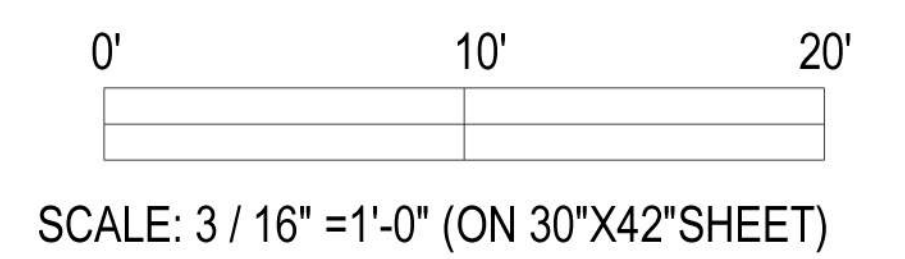
SCALE: 3 / 16" = 1'-0" (ON 30"x42" SHEET)



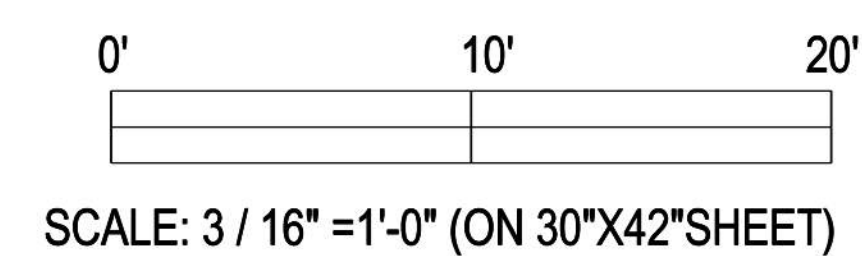




CHARACTER ELEVATION -  
BLDG. TYPE C (FRONT)



CHARACTER ELEVATION -  
BLDG. TYPE C (RIGHT)



MATERIAL & COLOR

- 1. HORIZONTAL SIDING
- 2. BOARD AND BATTEN
- 3. ROOF SHINGLE  
GAF TIMBERLINE  
COLOR: PEWTER GRAY
- 4. CORRUGATED METAL  
COLOR: GREY
- 5. COMPOSITE WOOD RAILING
- 6. PAINTED TRIM  
COLOR: SHERWIN WILLIAMS  
TRICORN BLACK SW6258
- 7. PAINTED POST  
SHERWIN WILLIAMS  
TRICORN BLACK SW6258
- 8. VINYL WINDOW

- A. SHERWIN WILLIAMS  
WHITE SNOW SW9541
- B. SHERWIN WILLIAMS  
SUMMER WHITE SW7557
- C. SHERWIN WILLIAMS  
BEACH HOUSE SW7518
- D. SHERWIN WILLIAMS  
JUTE BROWN SW6096
- E. SHERWIN WILLIAMS  
PERLE NOIR SW9154

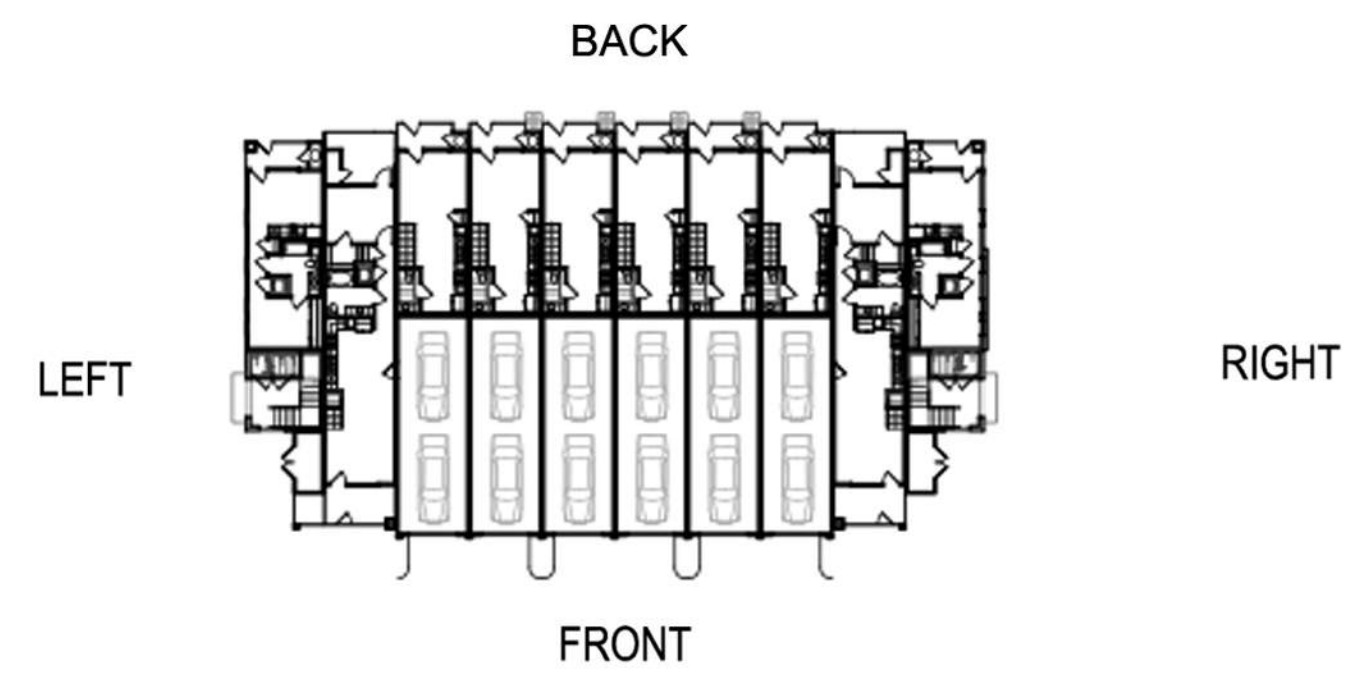
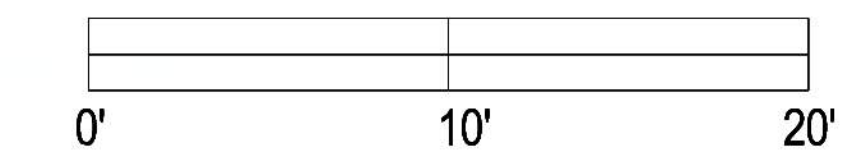






**CHARACTER ELEVATION -  
BLDG. TYPE C (BACK)**

SCALE: 3 / 16" = 1'-0" (ON 30"X42" SHEET)

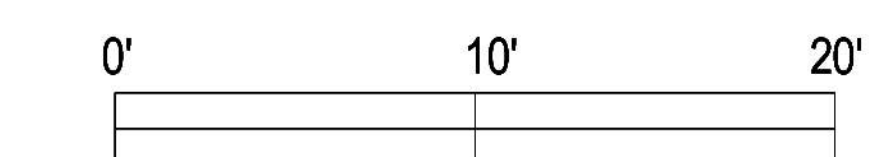


**MATERIAL & COLOR**

- |  |  |
|--|--|
| 1. HORIZONTAL SIDING   | A. SHERWIN WILLIAMS<br>WHITE SNOW SW9541   |
| 2. BOARD AND BATTEN  | B. SHERWIN WILLIAMS<br>SUMMER WHITE SW7557 |
| 3. ROOF SHINGLE  | C. SHERWIN WILLIAMS<br>BEACH HOUSE SW7518  |
| 4. CORRUGATED METAL<br>COLOR: PEWTER GRAY                          | D. SHERWIN WILLIAMS<br>JUTE BROWN SW6096   |
| 5. COMPOSITE WOOD RAILING  | E. SHERWIN WILLIAMS<br>PERLE NOIR SW9154   |
| 6. PAINTED TRIM<br>COLOR: SHERWIN WILLIAMS<br>TRICORN BLACK SW6258 |  |
| 7. PAINTED POST<br>SHERWIN WILLIAMS<br>TRICORN BLACK SW6258        |  |
| 8. VINYL WINDOW  |  |



**CHARACTER ELEVATION -  
BLDG. TYPE C (LEFT)**



SCALE: 3 / 16" = 1'-0" (ON 30"X42" SHEET)



A-24



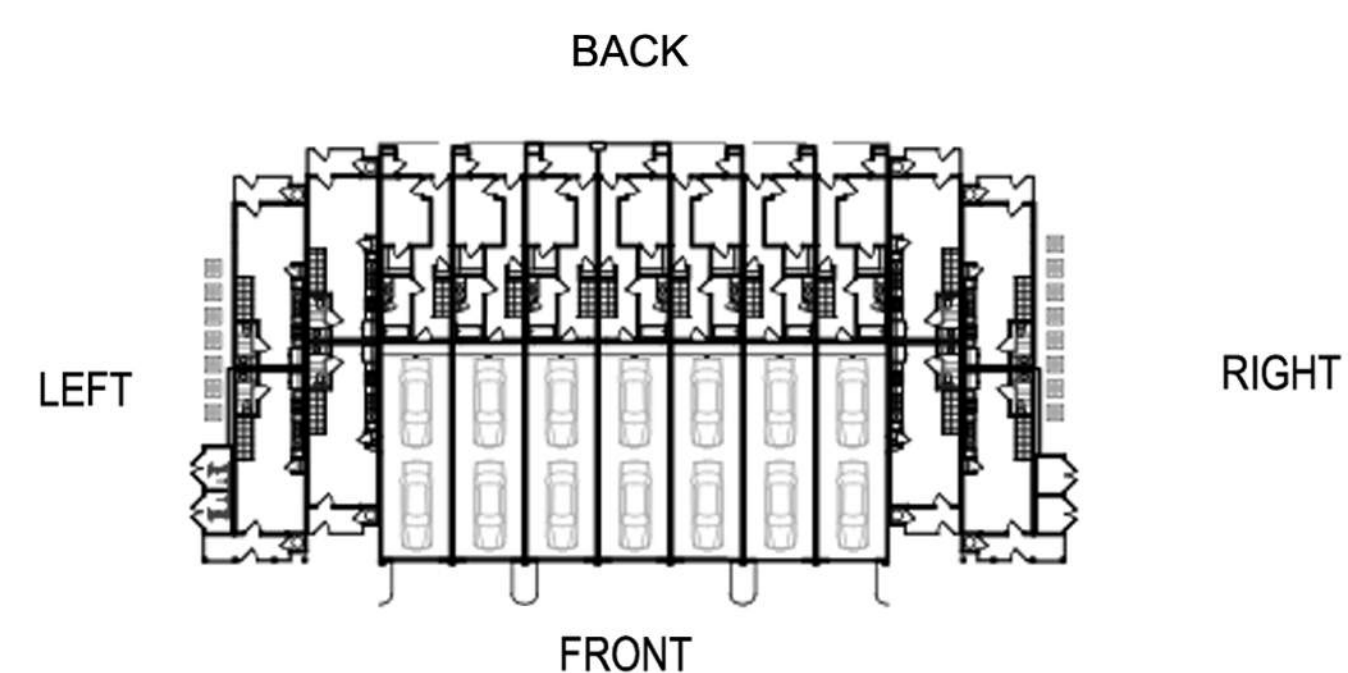


CHARACTER ELEVATION -  
BLDG. TYPE D (FRONT)

0' 10' 20'



SCALE: 3 / 16" = 1'-0" (ON 30"x42" SHEET)



**MATERIAL & COLOR**

- |  |  |
|--|--|
| 1. HORIZONTAL SIDING   | A. SHERWIN WILLIAMS<br>WHITE SNOW SW9541   |
| 2. BOARD AND BATTEN  | B. SHERWIN WILLIAMS<br>SUMMER WHITE SW7557 |
| 3. ROOF SHINGLE  | C. SHERWIN WILLIAMS<br>BEACH HOUSE SW7518  |
| 4. CORRUGATED METAL<br>COLOR: PEWTER GRAY                          | D. SHERWIN WILLIAMS<br>JUTE BROWN SW6096   |
| 5. COMPOSITE WOOD RAILING  | E. SHERWIN WILLIAMS<br>PERLE NOIR SW9154   |
| 6. PAINTED TRIM<br>COLOR: SHERWIN WILLIAMS<br>TRICORN BLACK SW6258 |  |
| 7. PAINTED POST<br>SHERWIN WILLIAMS<br>TRICORN BLACK SW6258        |  |
| 8. VINYL WINDOW  |  |



CHARACTER ELEVATION -  
BLDG. TYPE D (LEFT)

0' 10' 20'



SCALE: 3 / 16" = 1'-0" (ON 30"x42" SHEET)

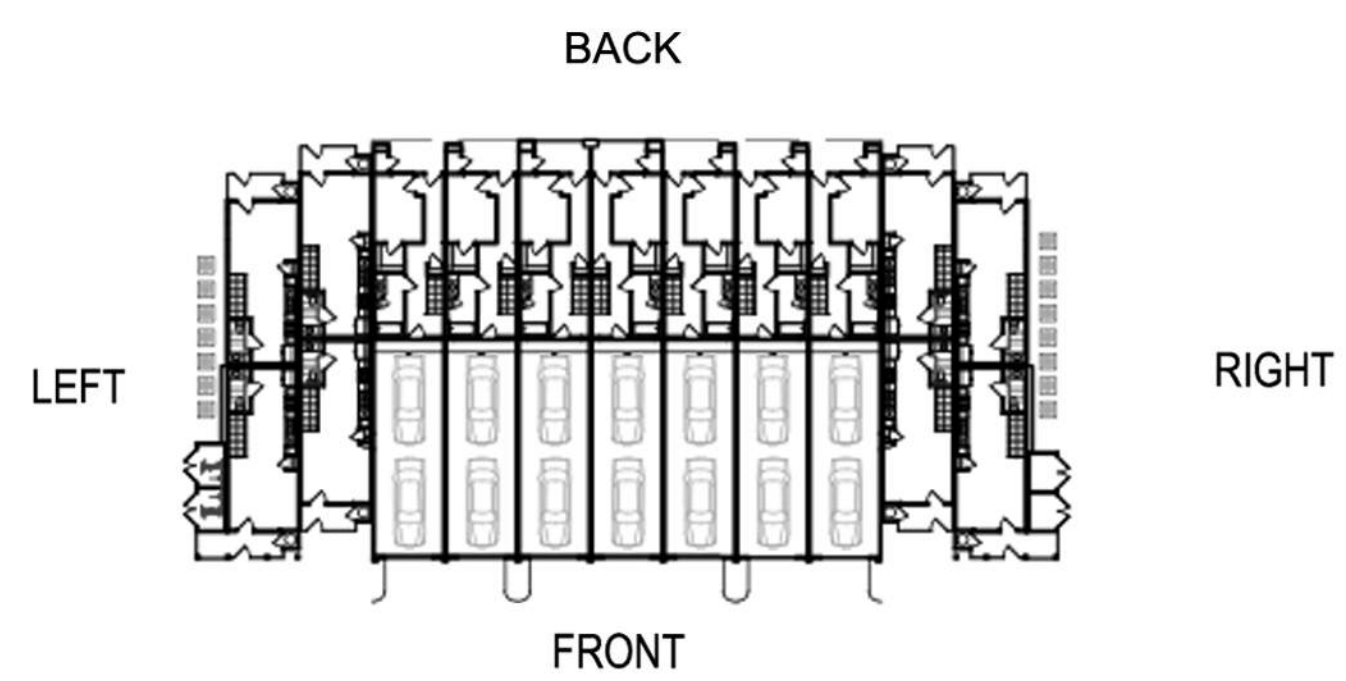
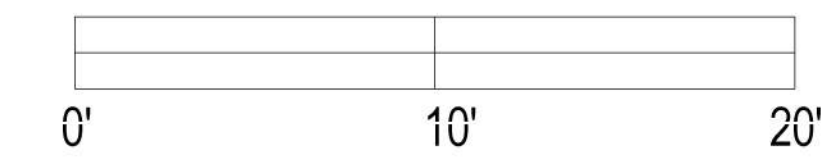






**CHARACTER ELEVATION -  
BLDG. TYPE D (BACK)**

SCALE: 3 / 16" = 1'-0" (ON 30"X42" SHEET)



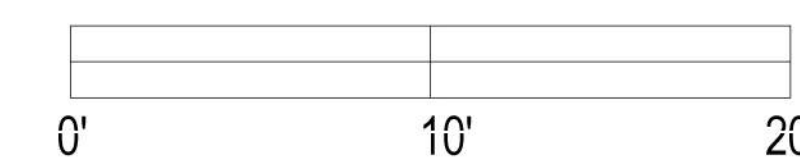
**MATERIAL & COLOR**

- |  |  |
|--|--|
| 1. HORIZONTAL SIDING   | A. SHERWIN WILLIAMS<br>WHITE SNOW SW9541   |
| 2. BOARD AND BATTEN  | B. SHERWIN WILLIAMS<br>SUMMER WHITE SW7557 |
| 3. ROOF SHINGLE<br>GAF TIMBERLINE<br>COLOR: PEWTER GRAY            | C. SHERWIN WILLIAMS<br>BEACH HOUSE SW7518  |
| 4. CORRUGATED METAL<br>COLOR: GREY                                 | D. SHERWIN WILLIAMS<br>JUTE BROWN SW6096   |
| 5. COMPOSITE WOOD RAILING  | E. SHERWIN WILLIAMS<br>PERLE NOIR SW9154   |
| 6. PAINTED TRIM<br>COLOR: SHERWIN WILLIAMS<br>TRICORN BLACK SW6258 |  |
| 7. PAINTED POST<br>SHERWIN WILLIAMS<br>TRICORN BLACK SW6258        |  |
| 8. VINYL WINDOW  |  |

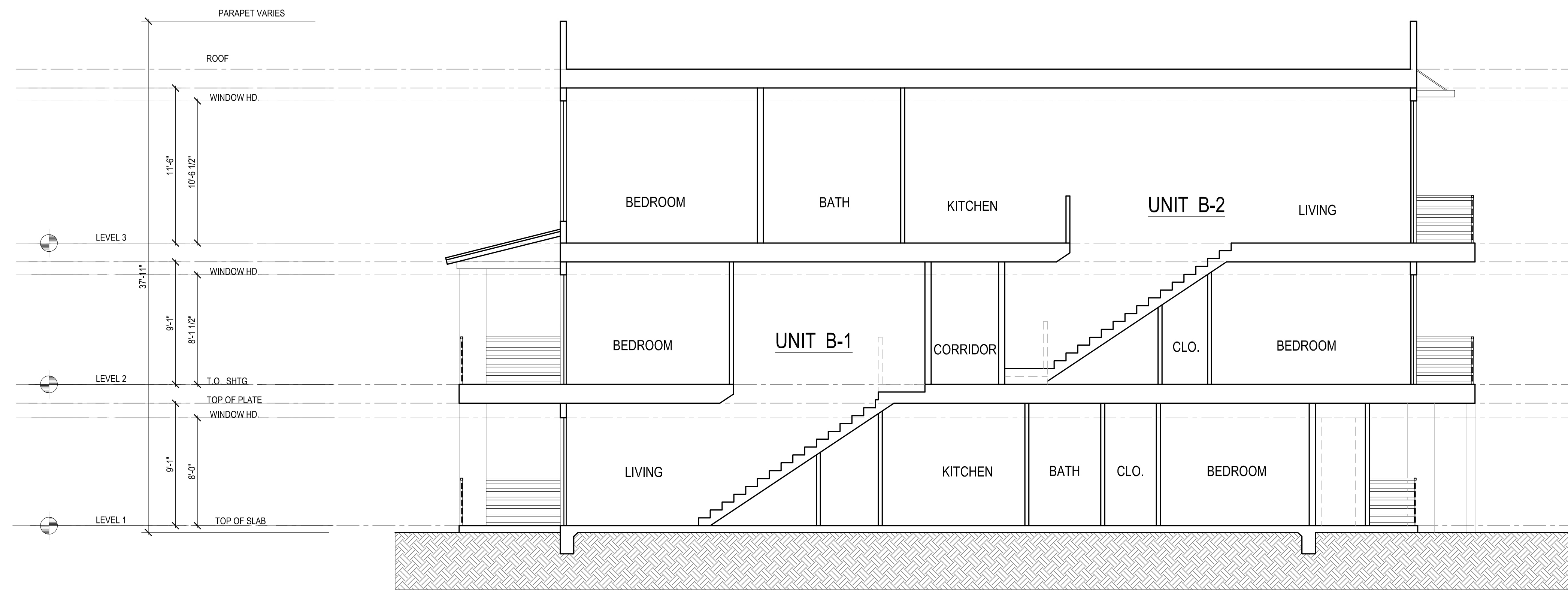


**CHARACTER ELEVATION -  
BLDG. TYPE D (RIGHT)**

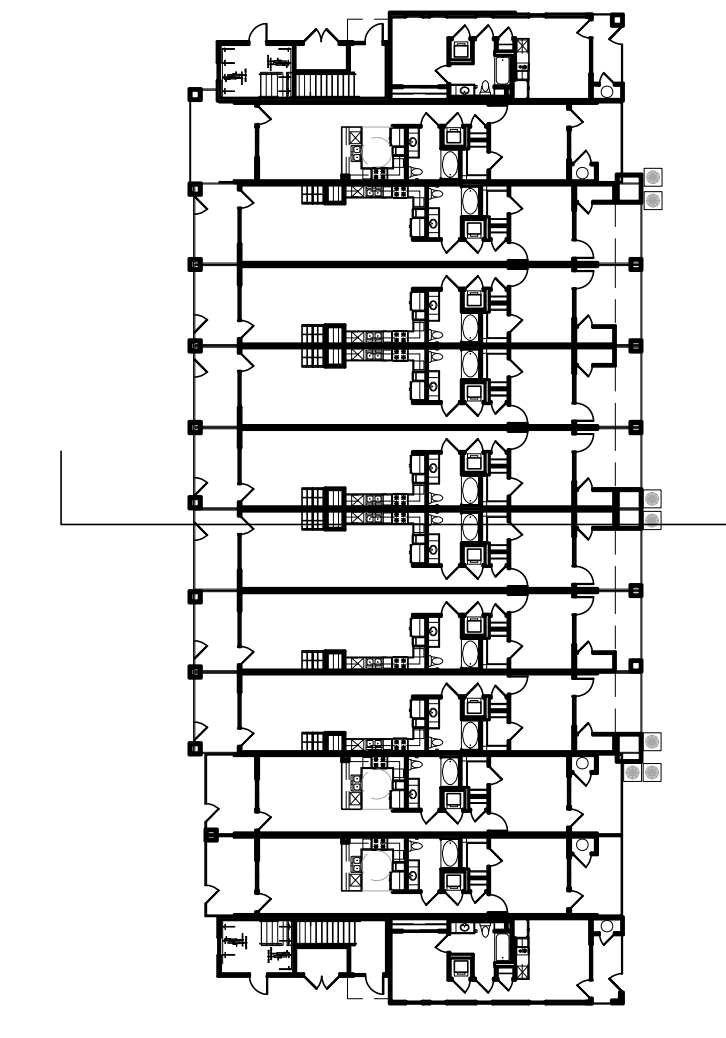
SCALE: 3 / 16" = 1'-0" (ON 30"X42" SHEET)



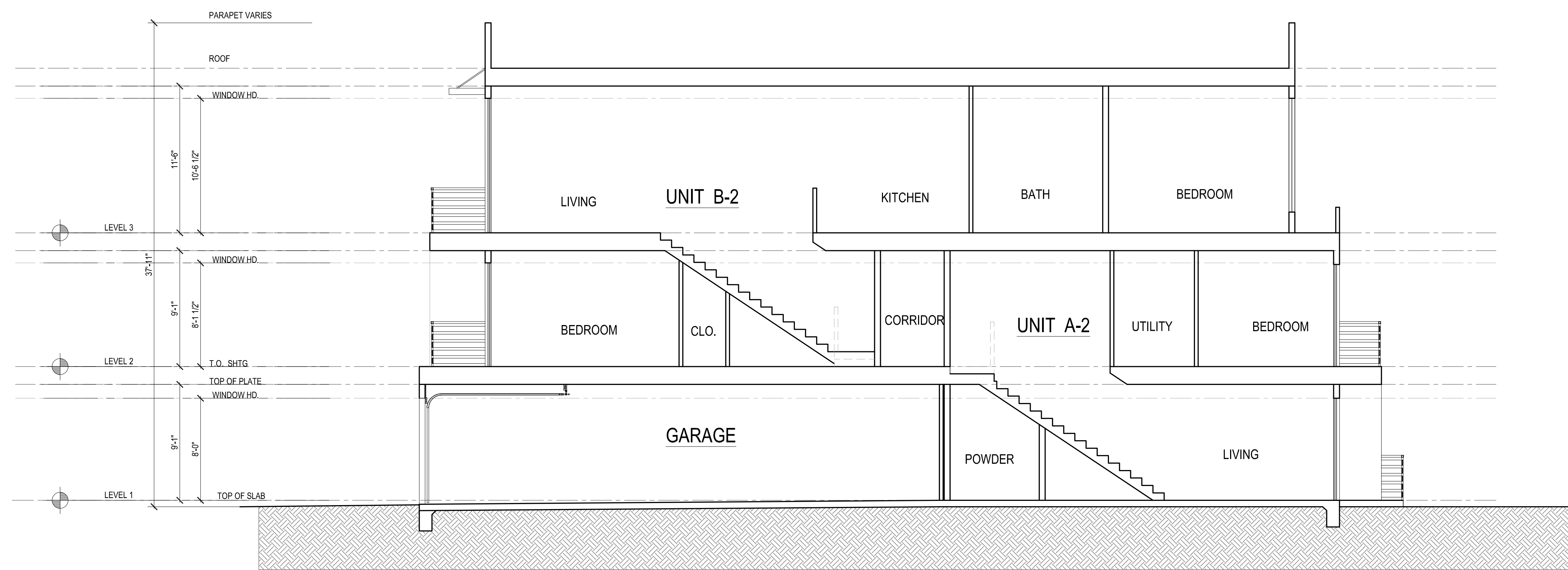




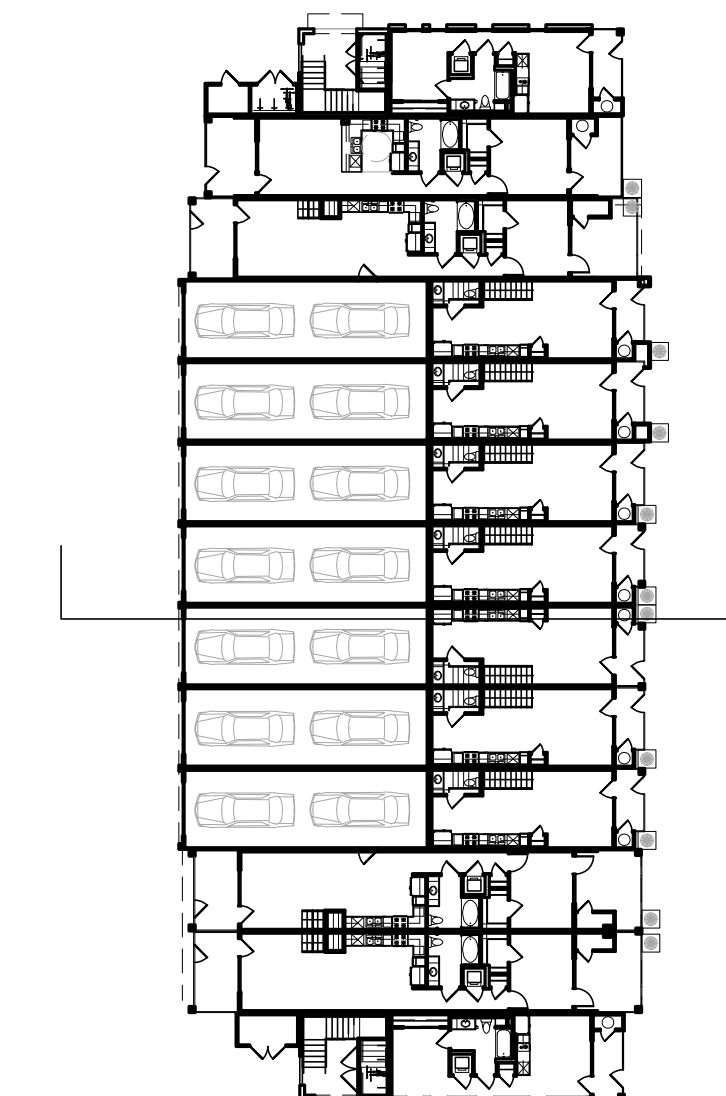
CONCEPTUAL SECTION - BLDG. TYPE-A



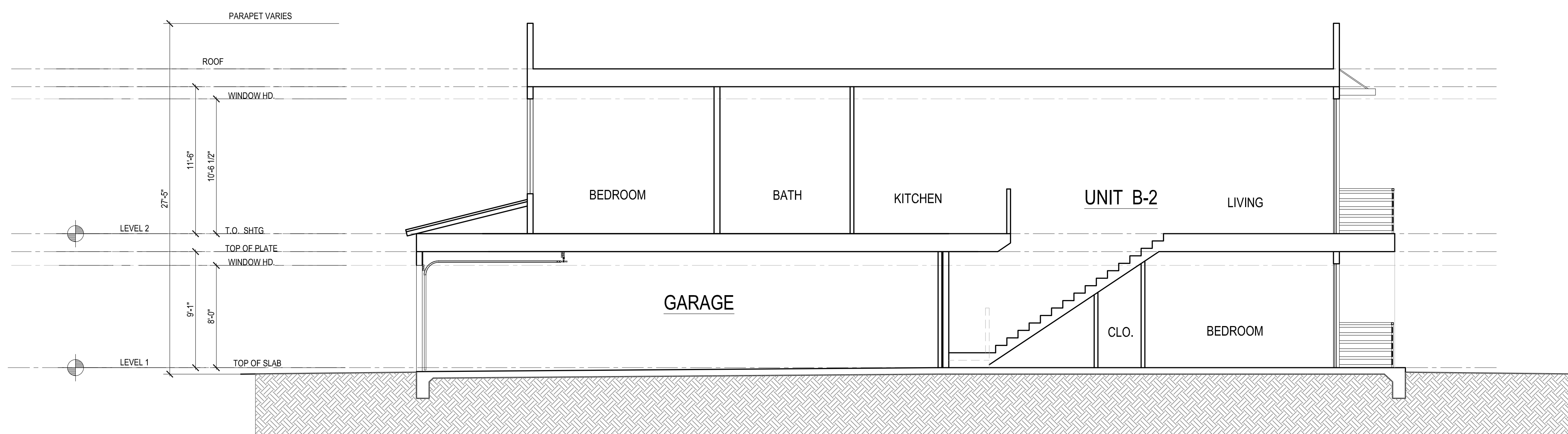
BLDG. TYPE-A



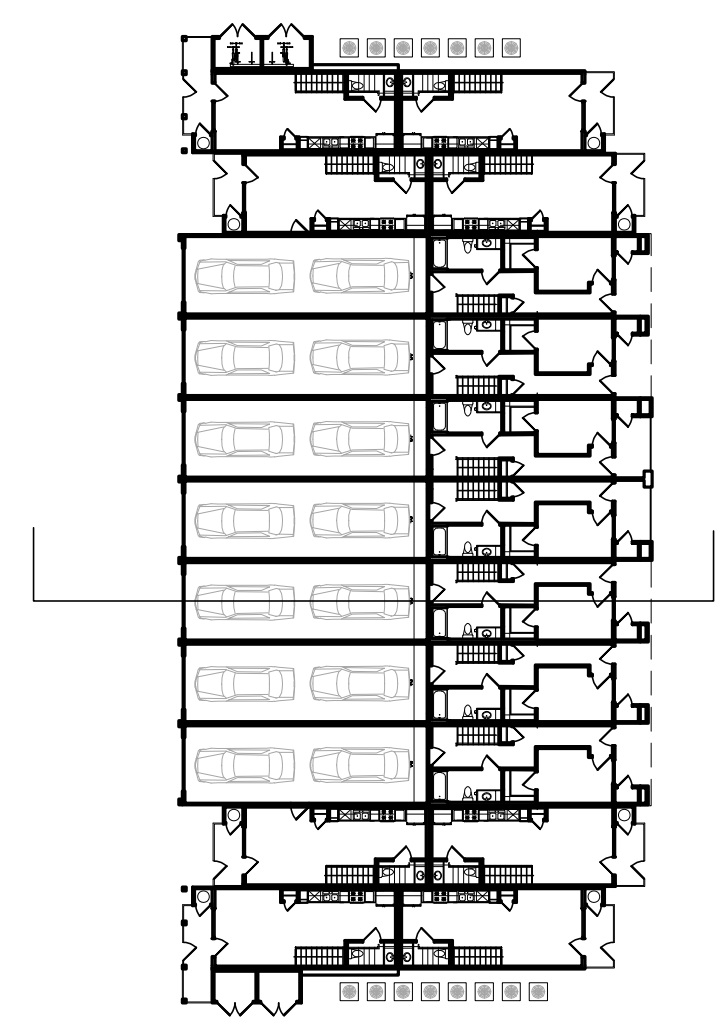
CONCEPTUAL SECTION - BLDG. TYPE-B  
(TYPE-C SIMILAR)



BLDG. TYPE-B



CONCEPTUAL SECTION - BLDG. TYPE-D



BLDG. TYPE-D

