

# Caulfield Bridge Crosstown Connector

COMMUNITY PROJECT UPDATES



**MARK THOMAS**

Thursday May 30<sup>th</sup>, 2024



# Objectives

- Provide an update on the project, including bridge design and aesthetics, amenities, and traffic circulation.
- Explain how the City is planning to minimize impacts to the Riverfront neighborhood.
- Answer questions and discuss project details with residents



# Ground Rules

- Share space. Only one person should speak at a time.
- Be respectful of one another's opinions.
- Remember this is one meeting in a longer process.

# Caulfield Lane Meeting Agenda



- Project Overview
- Feedback from previous outreach
- Provide updates on project progress
  - Bridge design and aesthetics
  - Amenities
  - Traffic circulation
- Discuss next steps for the project design phase, including environmental review
- Provide an opportunity for community members to engage with project staff and ask questions, provide feedback

# Caulfield Bridge Crosstown Connector Project



- Construct a new drawbridge over the Petaluma River
- Connect Crystal Lane at Petaluma Boulevard South to Caulfield Lane at Bautista Way.

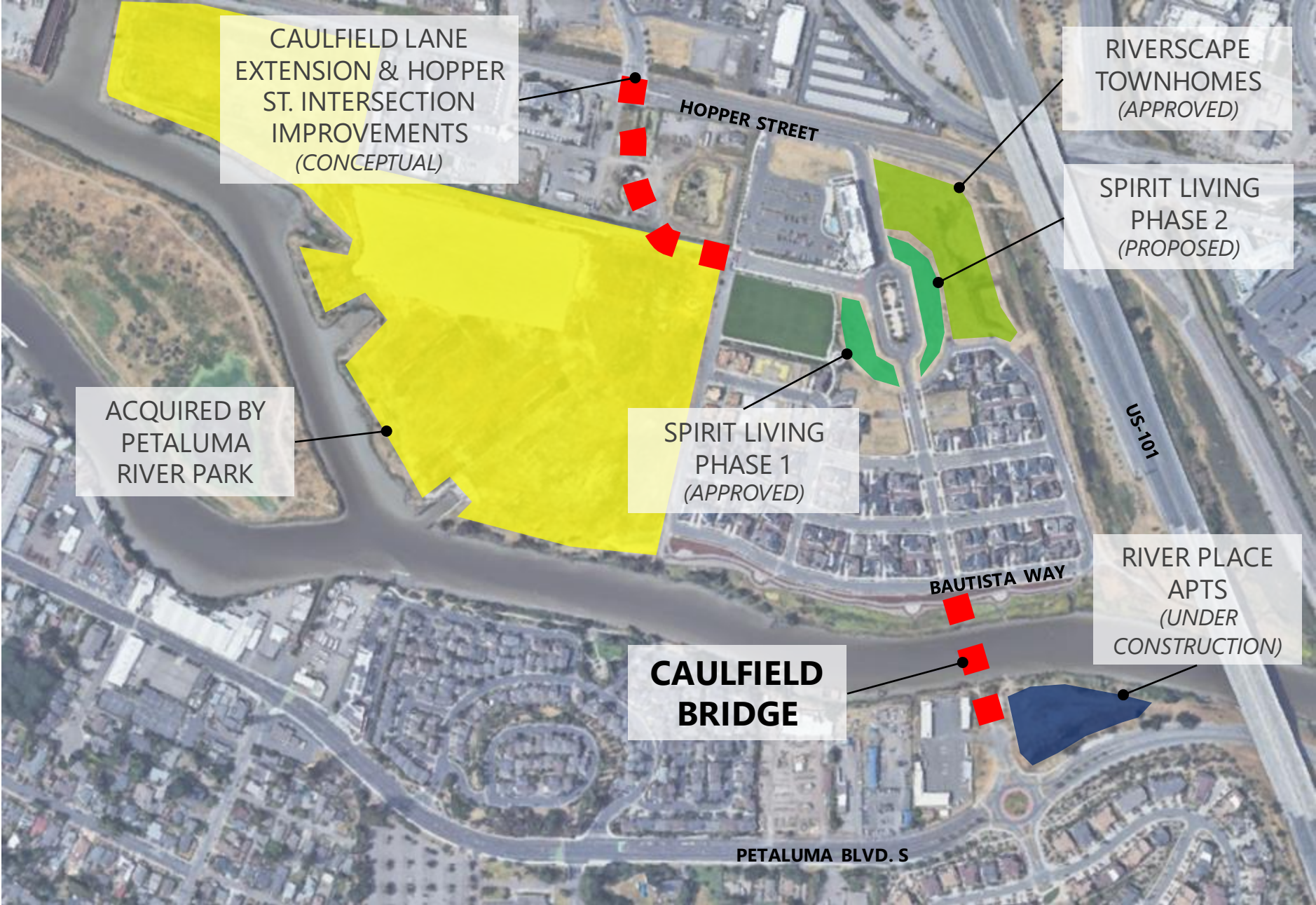
# Project Purpose



- Provide direct access between southeast and southwest Petaluma
- Improve emergency response times
- Enable safe and convenient crossing for all road users
- Relieve traffic congestion on existing crosstown connectors, such as E. Washington and D Streets

# CAULFIELD BRIDGE PROJECT AREA & DEVELOPMENT ACTIVITY

---





# Community Feedback

- Contribution from local artists
- Safe and welcoming
- Multimodal including bicyclists and pedestrians
- River access for fishing & recreation





# Feedback - Traffic Safety

- Reduce traffic speed and noise
- Address safety concerns near Hopper St transition and intersection
- Protect children, residents and homes from cars
- Consider traffic from additional development
- Maintain emergency vehicle access at the bridge
- Not a designated truck route



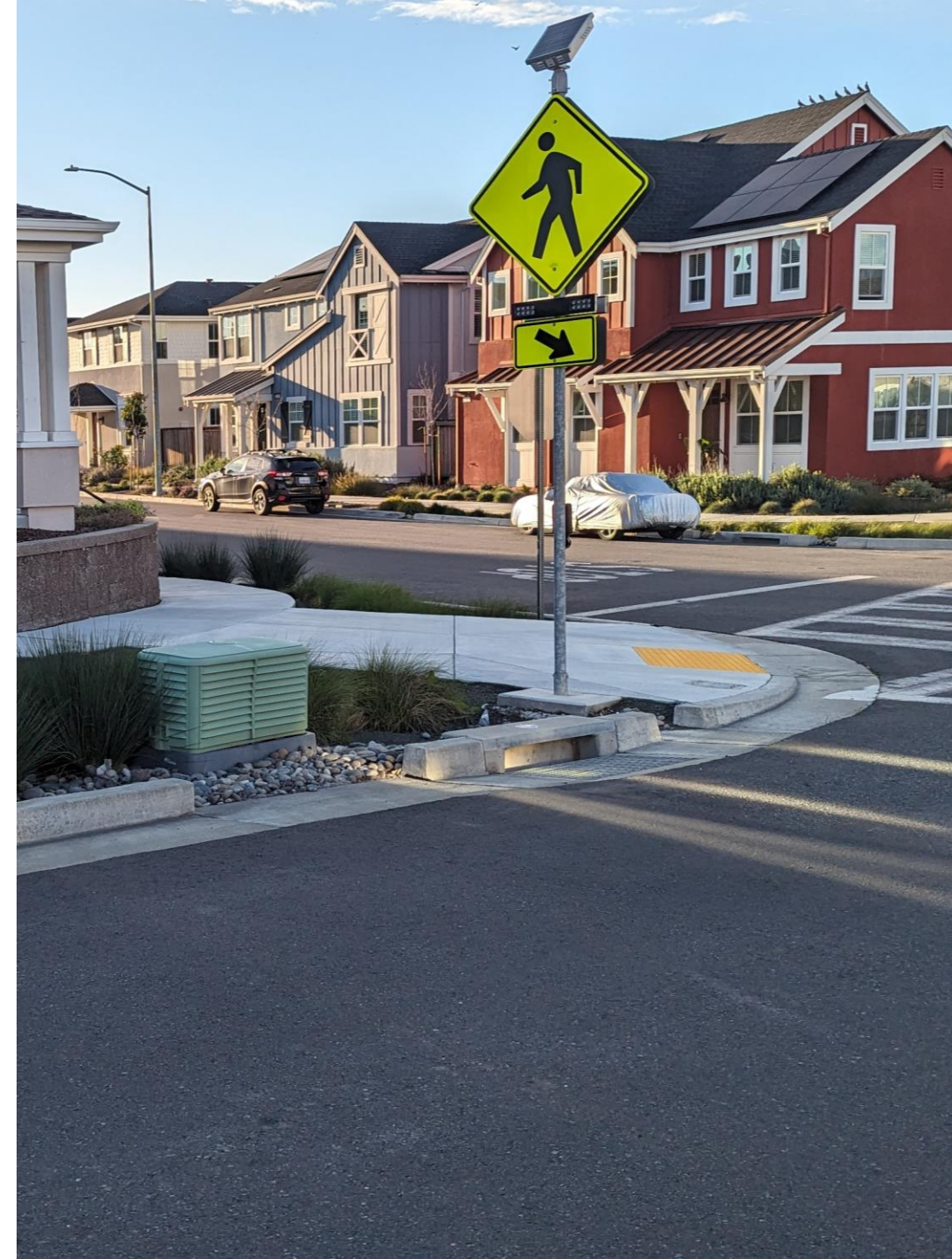
# Feedback - Environmental & Design

- Environmental impacts from bridge construction
- Gateway to the City of Petaluma.
- Kinetic art incorporated in the design of the bridge
- Rustic utilitarian design similar to D Street Bridge
- Lighting for safety and aesthetics



# Traffic Analysis

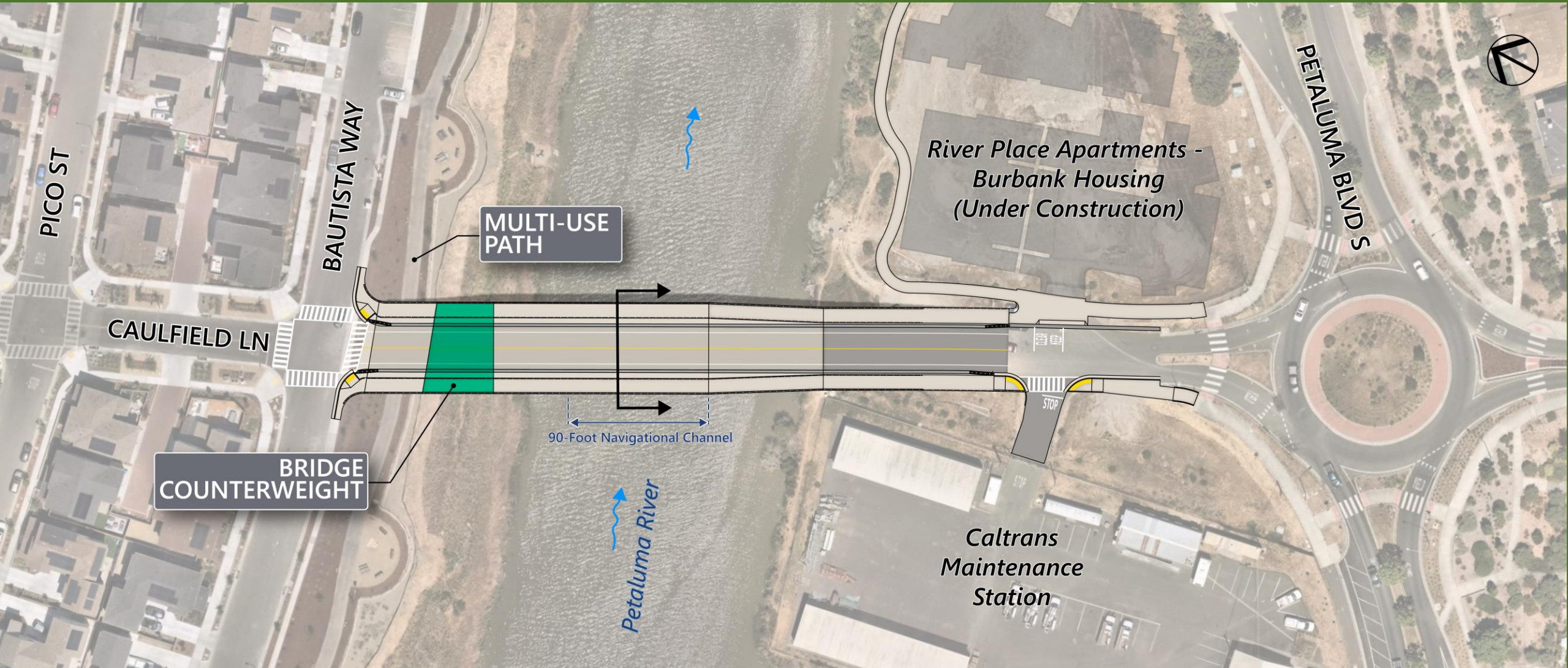
- Initial Study Findings
  - Pedestrian/Bicycle/Transit Facilities
  - Vehicle Miles Traveled (VMT)
  - Safety
  - Emergency Access
  - Traffic Calming Measures
  - Caulfield Lane Extension
  - Improvements to Roundabout @ Central Green
  - Effects on Neighborhood



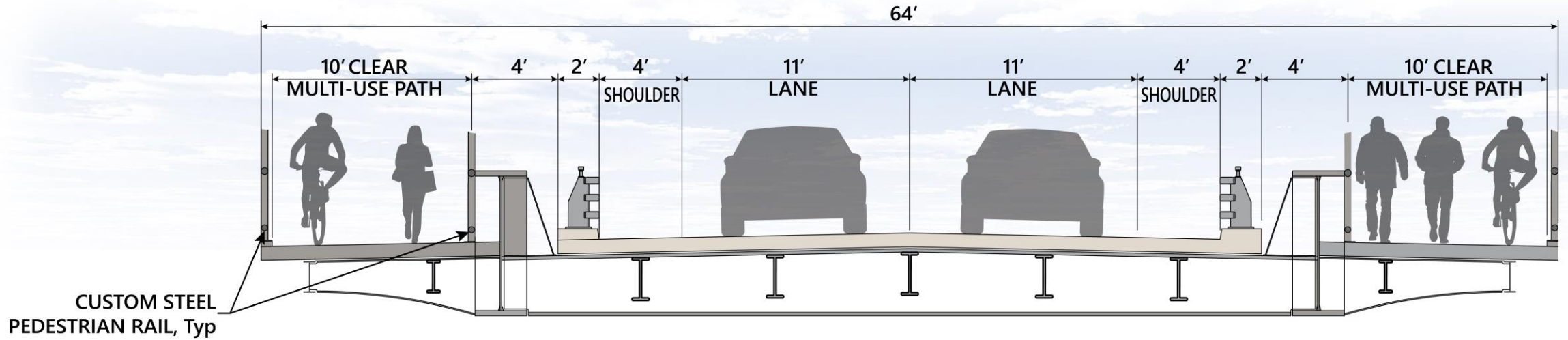
# Caulfield Lane Extension



# Bridge Layout



# Bridge Layout



**MOVABLE BRIDGE CROSS SECTION**



Pico St

Bautista Way

MULTI USE PATH

EXISTING PICNIC AREA



TRAIL LIGHTING



LAYERED LIGHTING

Caulfield Ln



WAYFINDING

Bautista Way

MULTI USE PATH

EXISTING PICNIC AREA



TRAIL ACCESS

RIVERBANK REVEGETATION

SLOPE OPTIONS



RIVERBANK REVEGETATION

RAIL FENCE



KAYAK PIER



FISHING PIER



Petaluma River Place

DECOMPOSED GRANITE PATH

RIVERBANK REVEGETATION

RAIL FENCE

MULTI USE PATH

MULTI USE PATH



PUBLIC ART INSPIRATION



RAIL FENCE



HYDRATION STATION

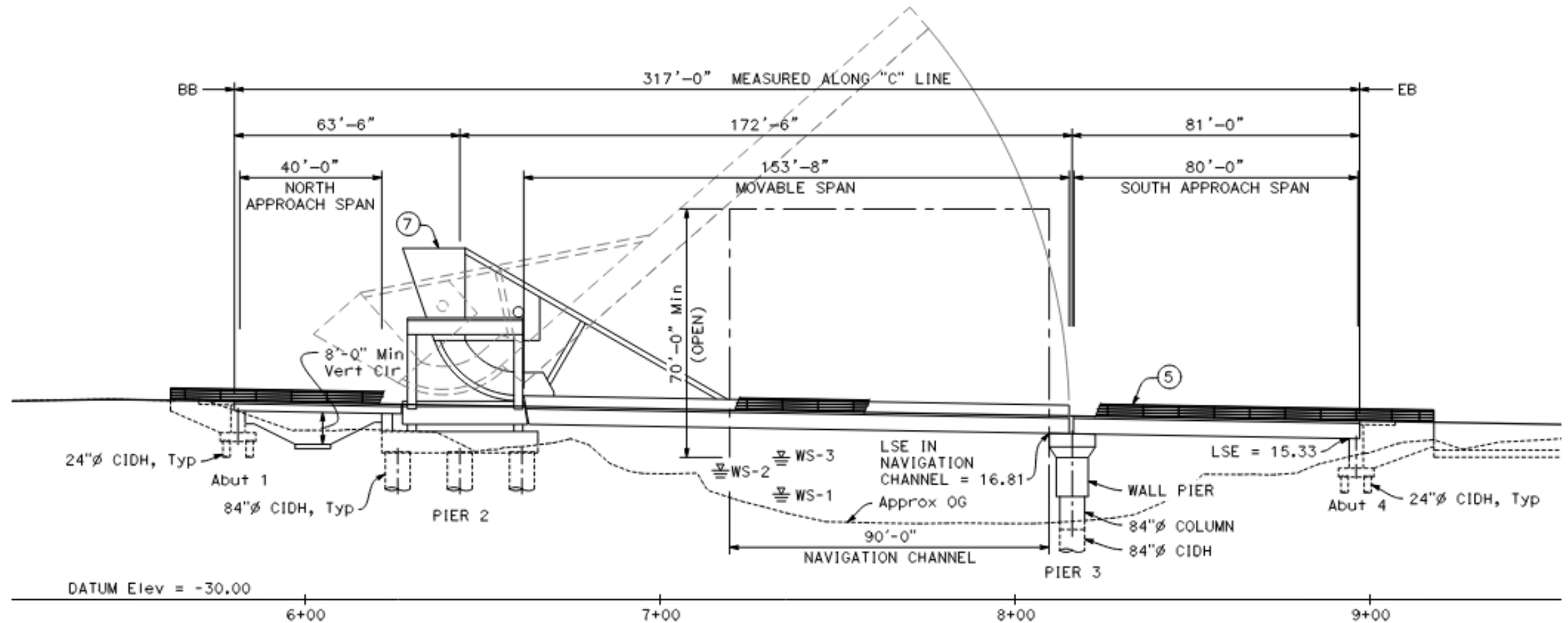


BIKE STATION

Petaluma Blvd S

Petaluma Blvd S

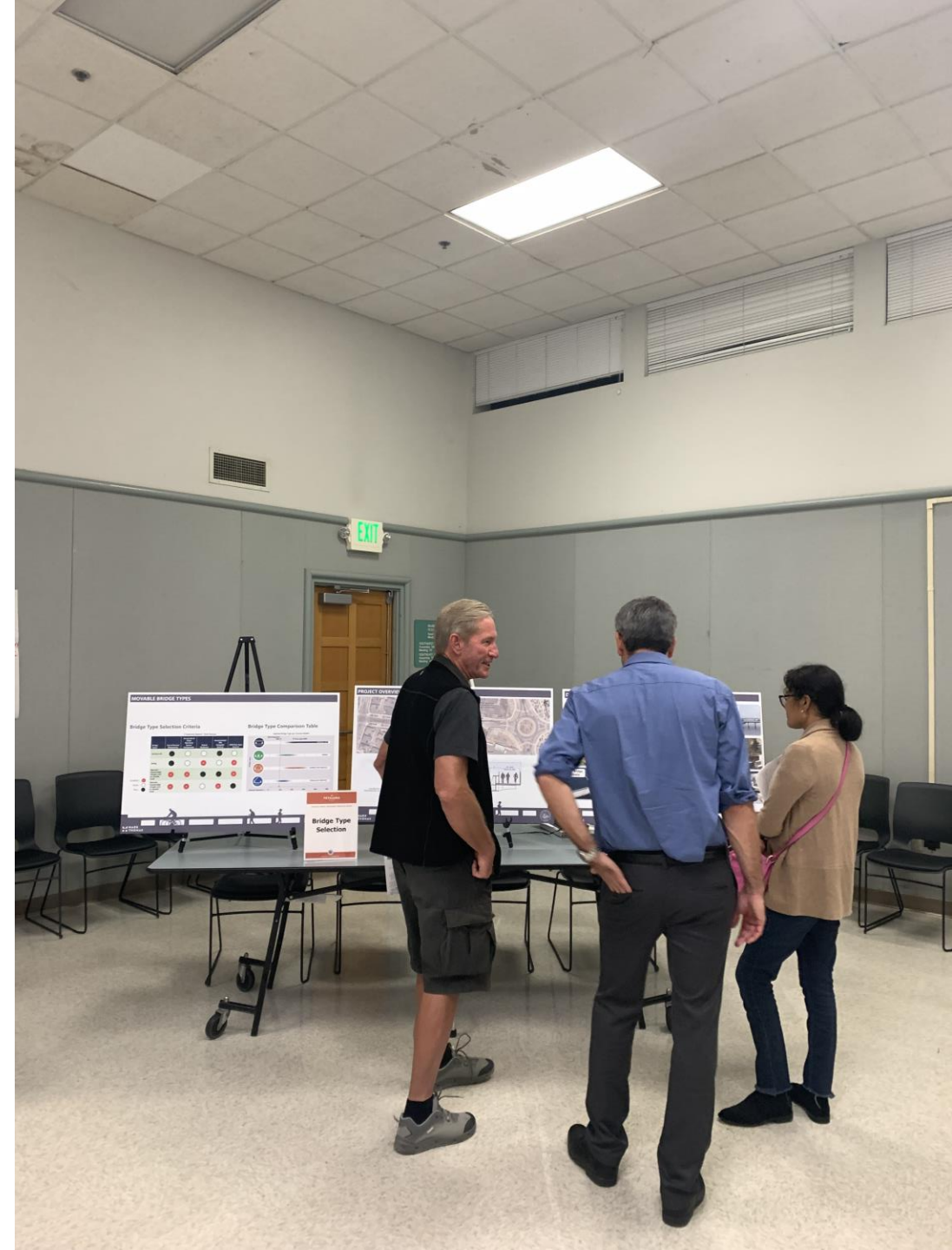
# Bridge Elevation





# Next Steps

- Alternatives for Caulfield Lane Extension & Hopper Intersection
- Improvements to Central Green
- Evaluate Traffic Calming Measures
- Coordinate with US Coast Guard
- Prepare Environmental Document
- Refine and Advance Design
- Continue Public Outreach



# Upcoming Public Engagement



- Neighborhood Focused Meeting w/ Riverfront Development (Today)
- Regular updates to Committees, Commissions and Council as design progresses (including two rounds Bridge Renderings).
- City Council June 17th
- US Coast Guard to circulate a notice to mariners soliciting feedback on the project (anticipated July 2024)
- Public Meeting at circulation of the Draft Environmental Document (anticipated Fall 2024)
- Updates through project webpage  
<https://cityofpetaluma.org/caulfieldbridge/>



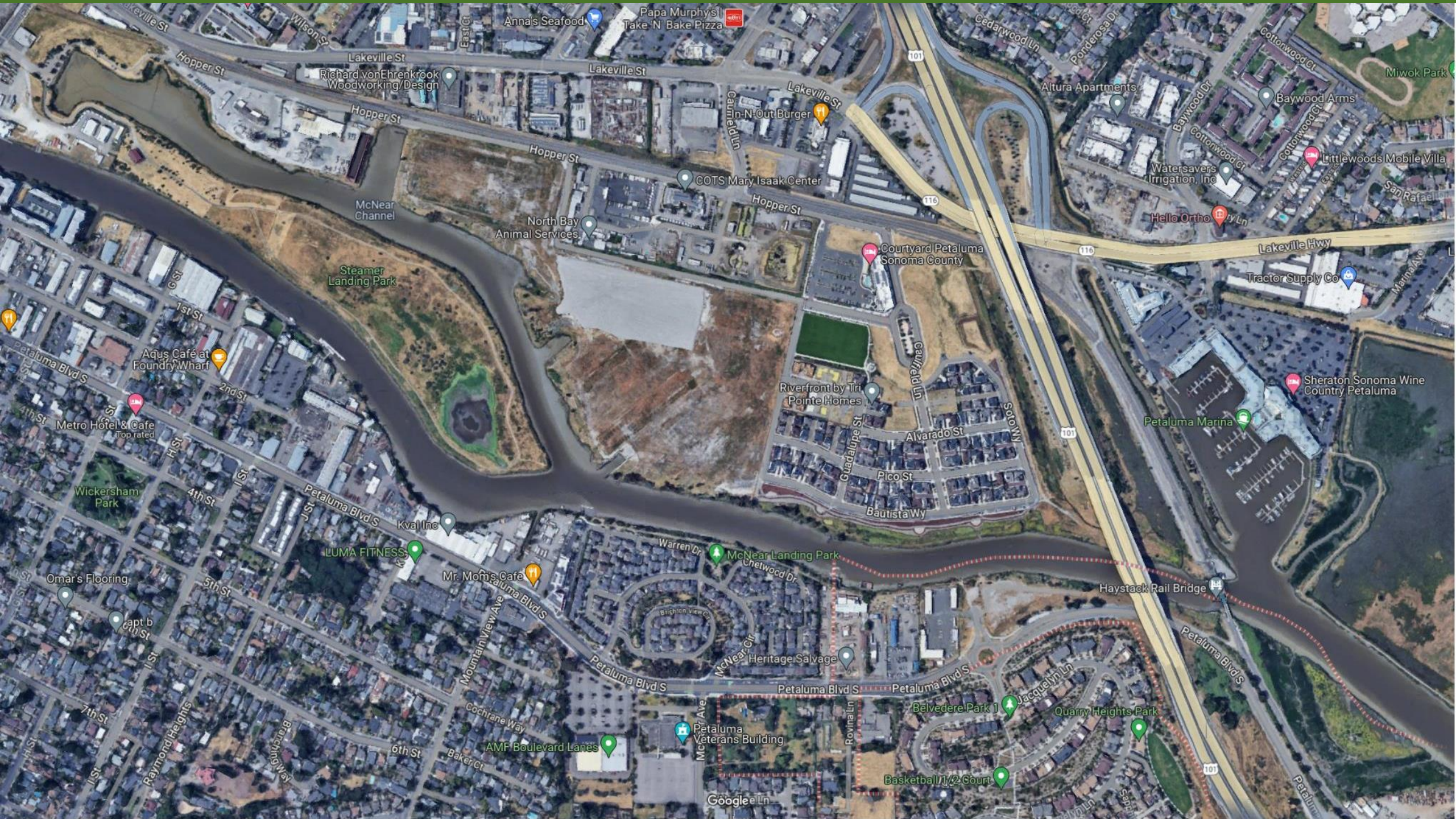
MARK THOMAS

Questions?



MARK THOMAS

# Reference Slides



Lakeville St  
Wilson St  
Hopper St

Lakeville St  
Richard von Ehrenkrook Woodworking/Design  
Hopper St  
East Ct  
Anna's Seafood  
Papa Murphy's  
Take N Bake Pizza

Cedarwood Ln  
Ponderosa Dr  
Cottonwood Ct  
Altura Apartments  
Baywood Arms  
Cottonwood Ct  
Watersavers Irrigation, Inc  
Hello Ortho  
Lakeville Hwy

McNear Channel  
Steamer Landing Park  
6 St  
1st St  
Petaluma Blvd S

COTS Mary Isaak Center  
North Bay Animal Services  
Hopper St  
Courtyard Petaluma Sonoma County  
Riverfront by Tri Pointe Homes  
Guadalupe St  
Alvarado St  
Pico St  
Bautista Wy

Tractor Supply Co  
Mammal Ave  
Sheraton Sonoma Wine Country Petaluma  
Petaluma Marina

Agus Café at Foundry Wharf  
Metro Hotel & Cafe  
Wickersham Park  
4th St  
H St  
1st St  
Petaluma Blvd S

Warren Dr  
McNear Landing Park  
Chelwood Dr  
Mr. Mom's Cafe  
Mountain View Ave  
Petaluma Blvd S  
Heritage Salvage  
McNear Cir

Haystack Rail Bridge  
Petaluma Blvd S

Omar's Flooring  
Capt b  
7th St  
Raymond Heights  
Branching Way  
6th St  
Baker Ct  
AMF Boulevard Lanes

Petaluma Veterans Building  
Google Ln  
Belvedere Park 1  
Quarry Heights Park  
Basketball 1/2 Court  
Rovina Ln

Jacquelyn Ln  
Petaluma Blvd S

# Existing Site



# Existing Site



# Existing Site

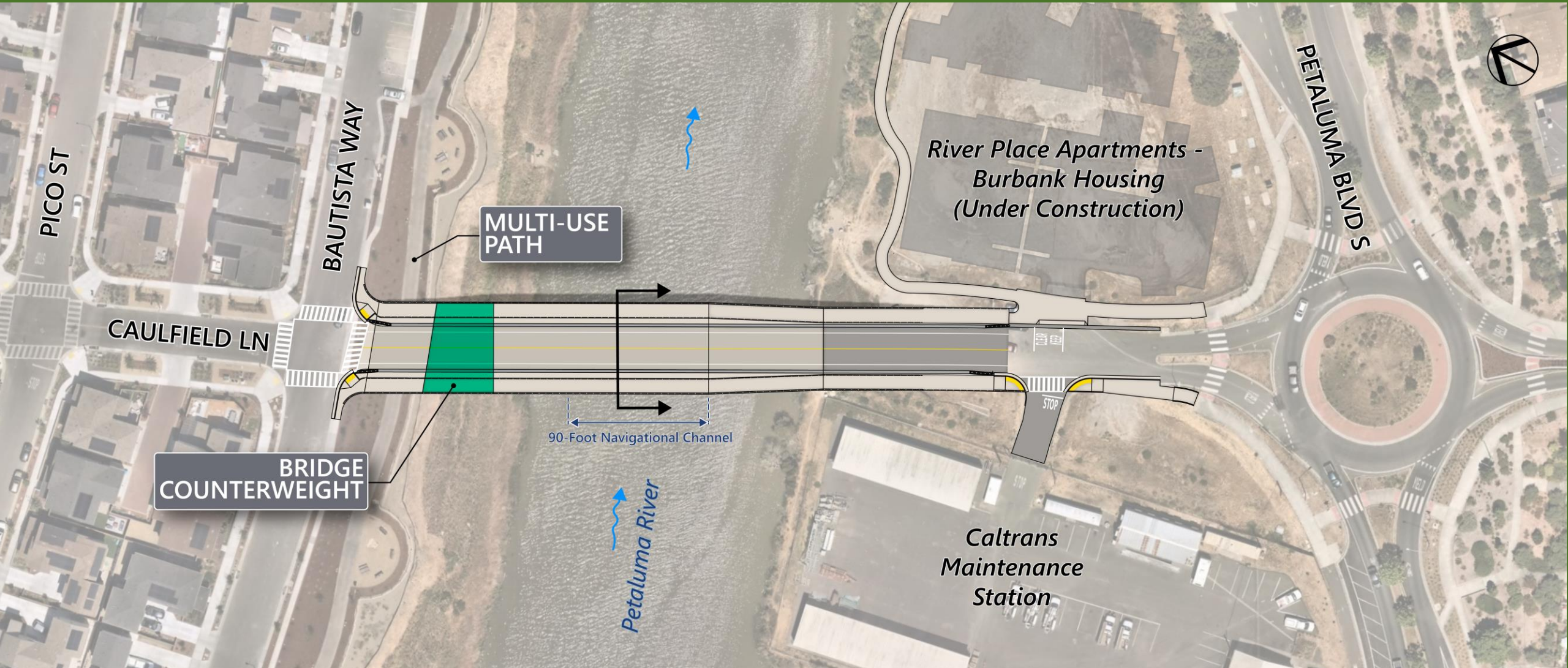




# Existing Site



# Bridge Layout



# Public Engagement (October 2023)



## Community

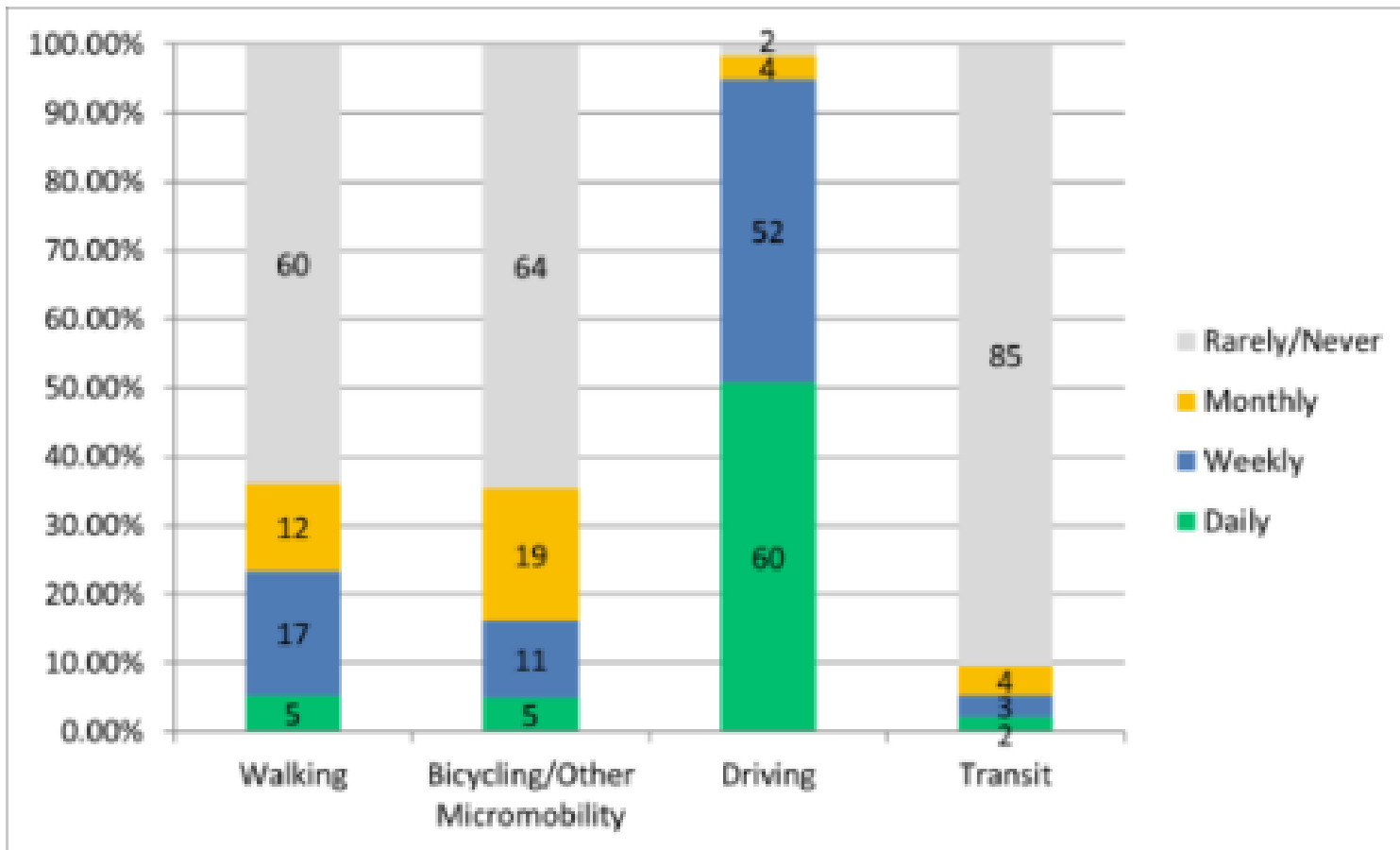
- Community members want to see the bridge wide enough to accommodate multiple users, such as bicyclists and pedestrians.
- Community members want to see engagement with local artists to contribute to the design of the bridge.
- To deter encampments or shelters forming under the bridge, community members would like to see lines of sight and abundant lighting to make the bridge feel safe and welcoming.
- Some community members expressed interest in a designated fishing area near the bridge and other river access for recreational purposes



# Public Engagement (October 2023)



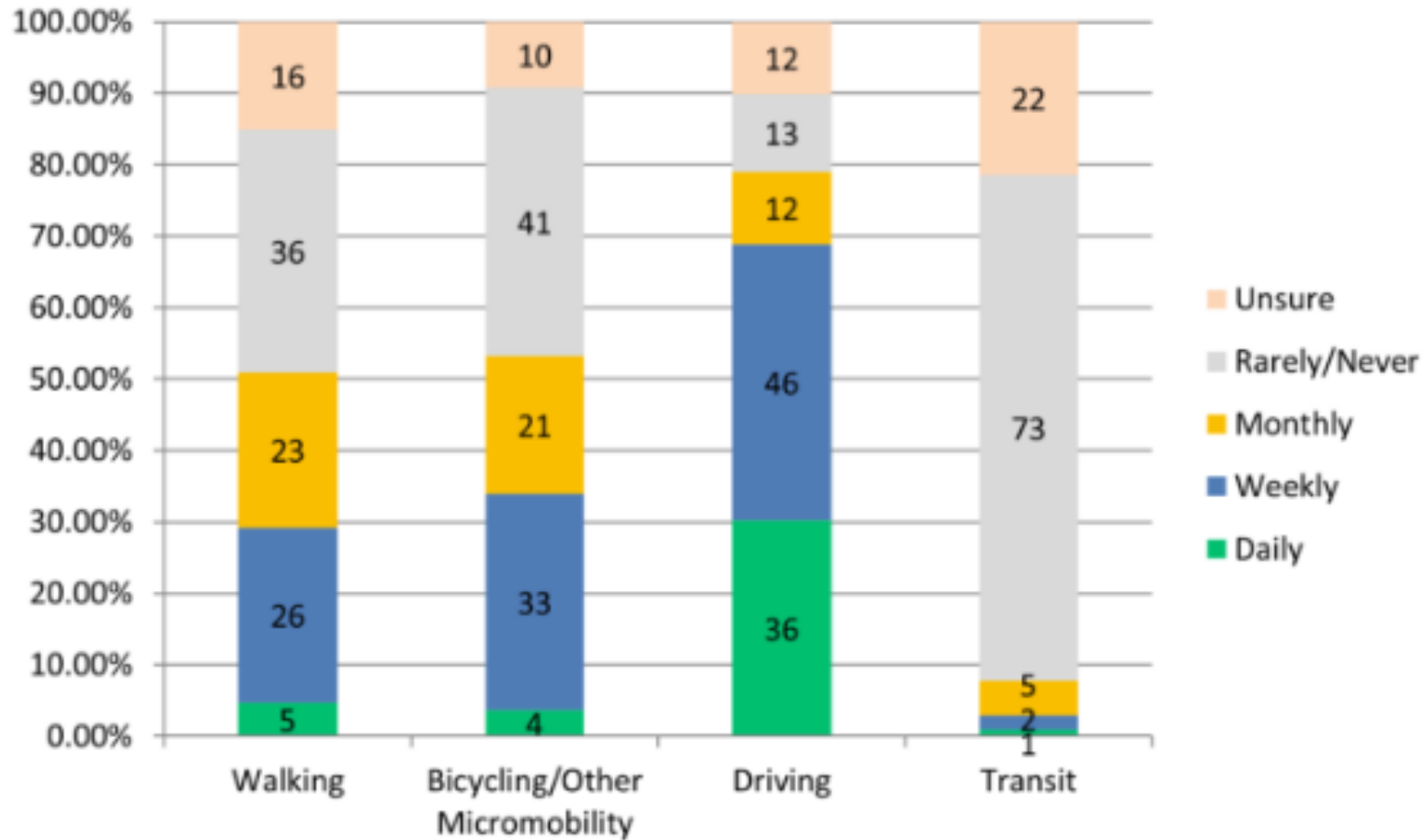
*Question 3: How do you currently travel between east and west Petaluma (across the freeway and/or river), and how frequently?*



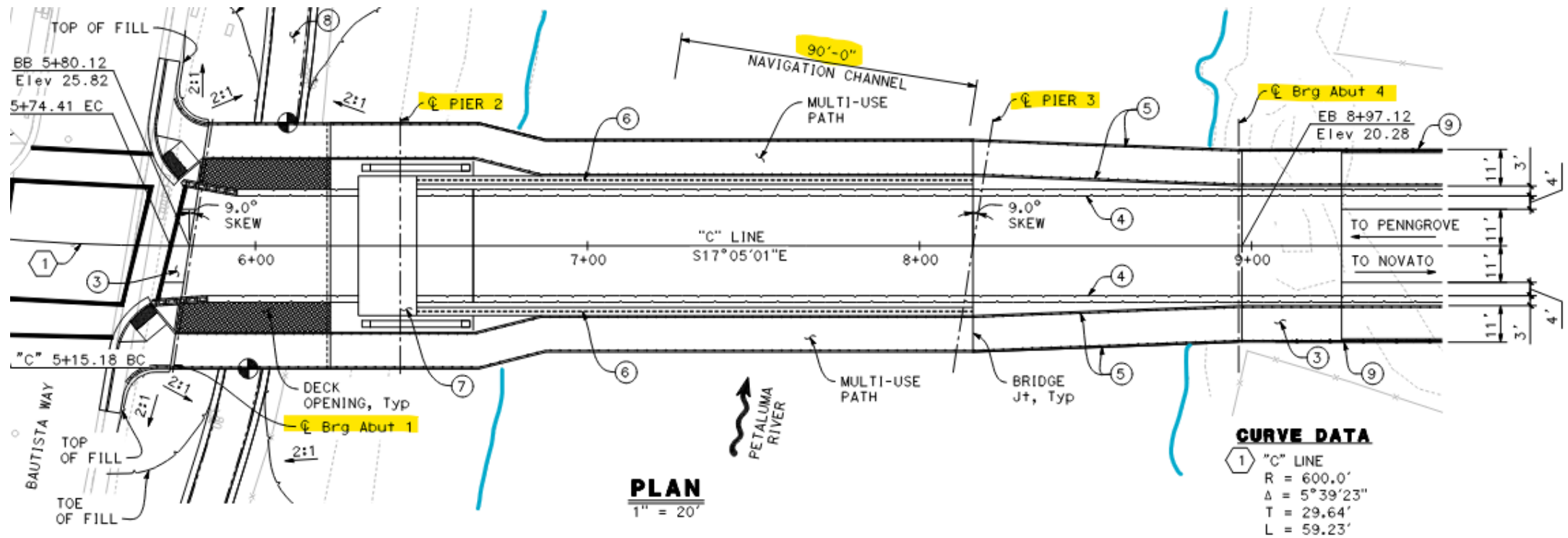
# Public Engagement (October 2023)



Question 6: How do you anticipate using the Caulfield Bridge, and how frequently?



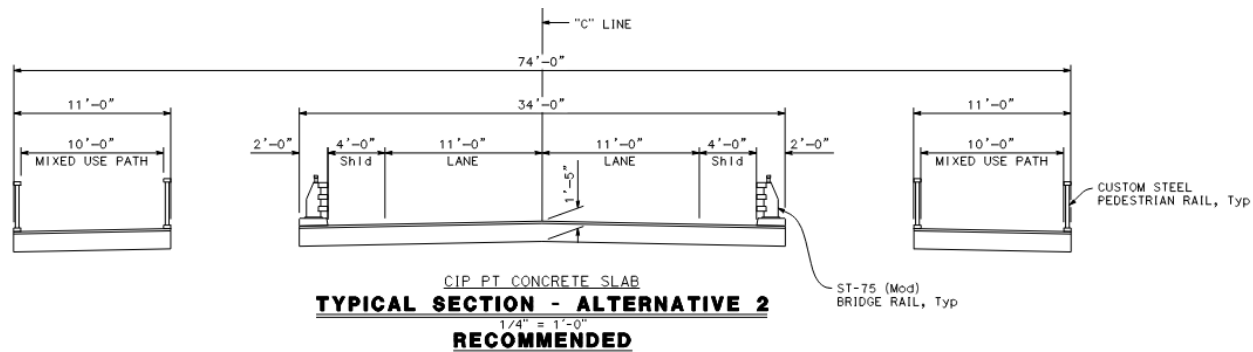
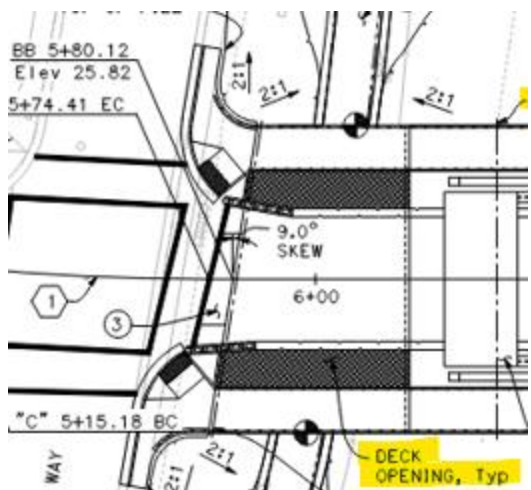
# Bridge Plan





# Key Bridge Features

- Cross Section (cont.)



CIP PT CONCRETE SLAB  
**TYPICAL SECTION - ALTERNATIVE 2**  
1/4" = 1'-0"

# ACTIVE TRANSPORTATION CONNECTIONS

- EXISTING/  
PROPOSED MULTI-  
USE TRAIL (PAVED)
- EXISTING/  
PROPOSED BIKE  
LANES (CLASS  
II/IIB/IV)
- EXISTING MULTI-  
USE TRAIL  
(UNPAVED)

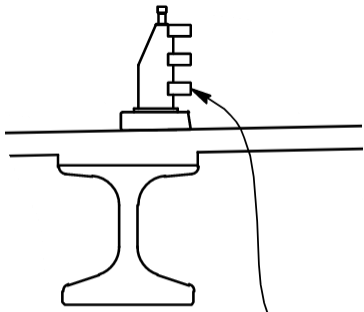




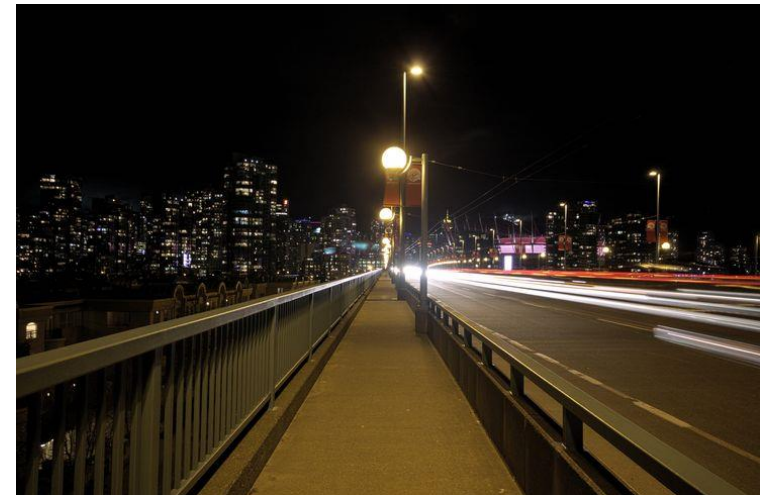
# Key Bridge Features



- Aesthetics



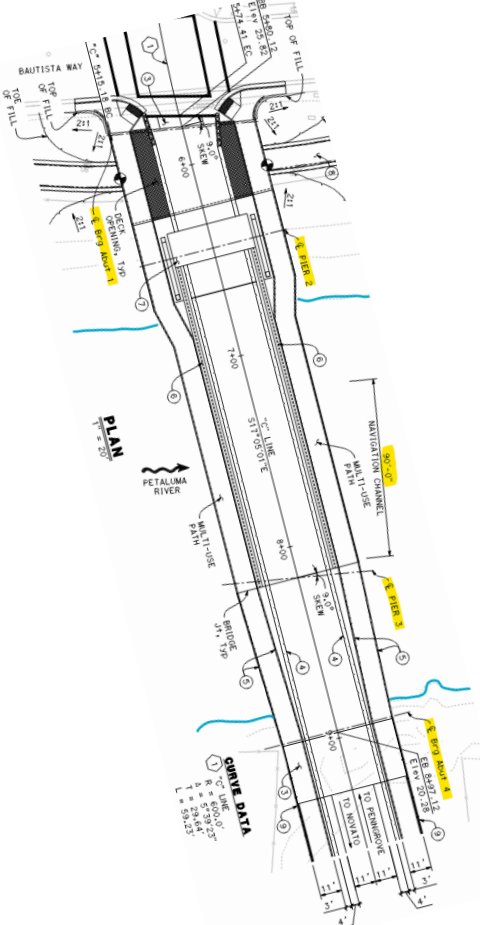
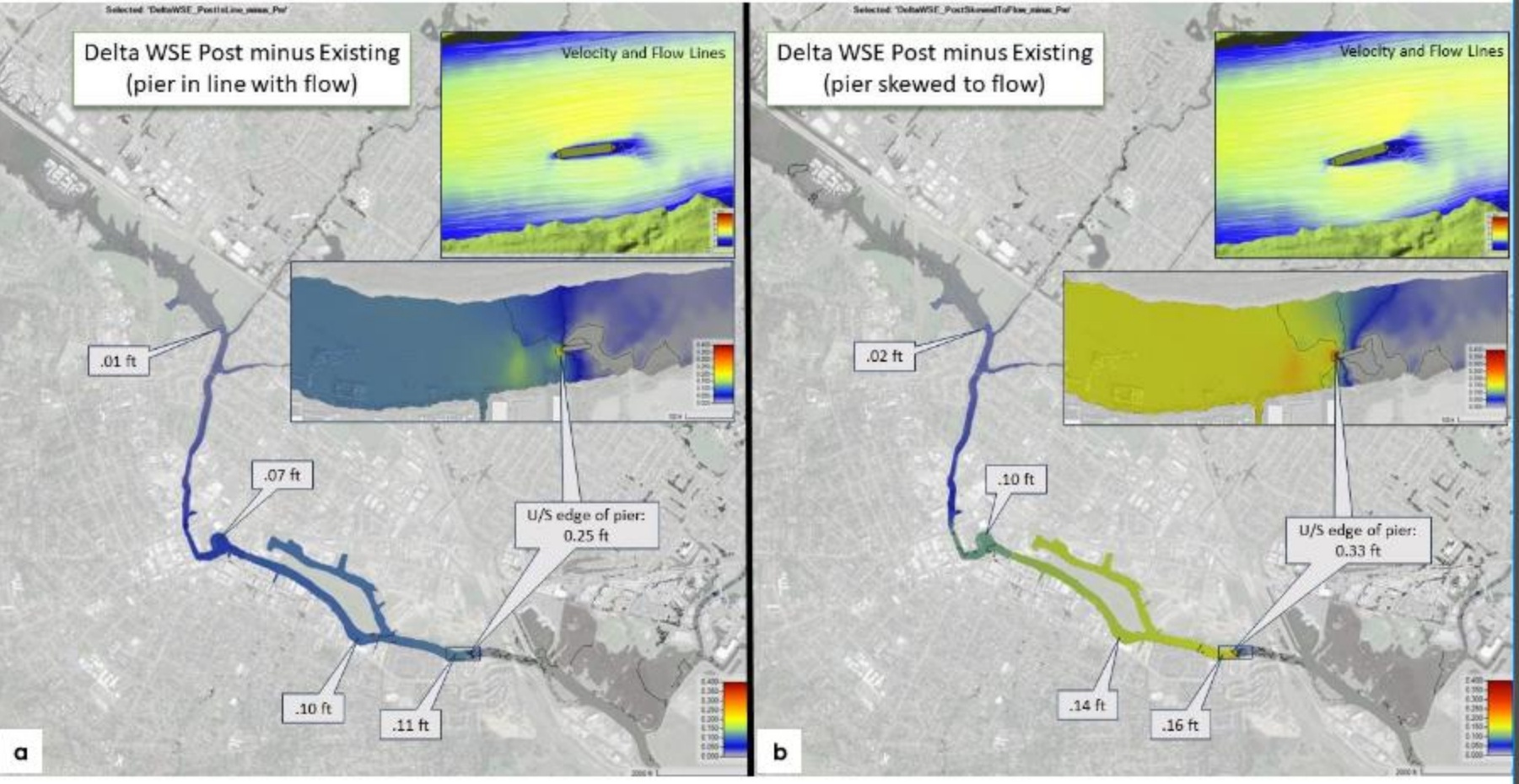
ST-75 (Mod)  
BRIDGE RAIL, Typ



# Key Bridge Features



- Hydraulics – skewed rest pier



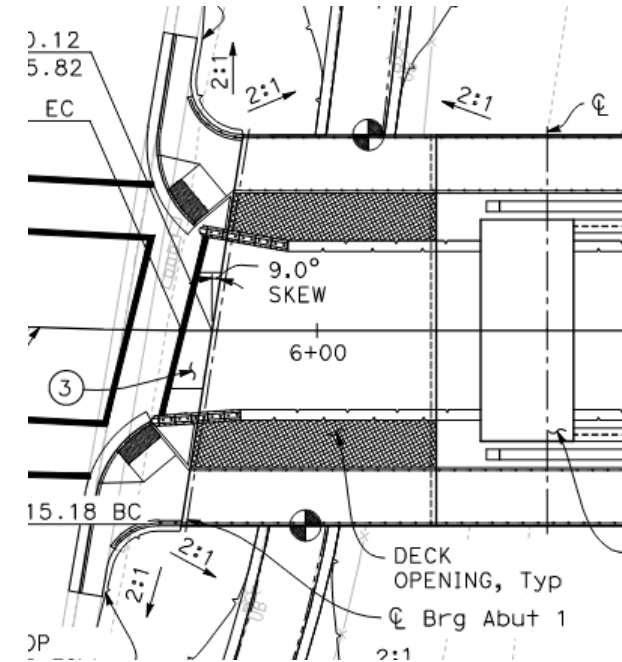
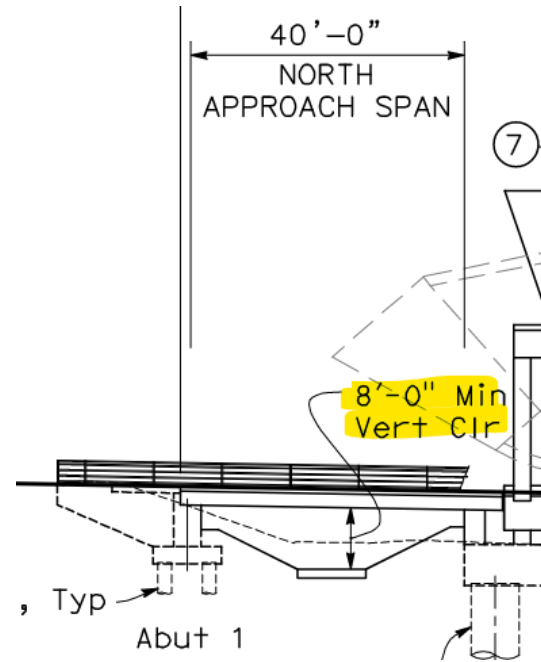
*Hydraulic analysis performed by Balance Hydraulics*

# North Approach Span



- Selection Criteria

- Structure Cost
- Superstructure Depth
- Constructability
- Aesthetic Consistency with Movable Span



# North Approach Span

