



MILESTONE ARCHITECTS
 816 G STREET
 PETALUMA, CA 94952
 707.765.0255
 www.milestonearch.com



CAVANAGH HOUSE & COTTAGE
 8 & 10 Keller Street
 Petaluma, CA 94952
 APN 008-051-005-000

SITE PLAN
 VICINITY MAP
 CONTEXT MAP
 CUP SUBMITTAL

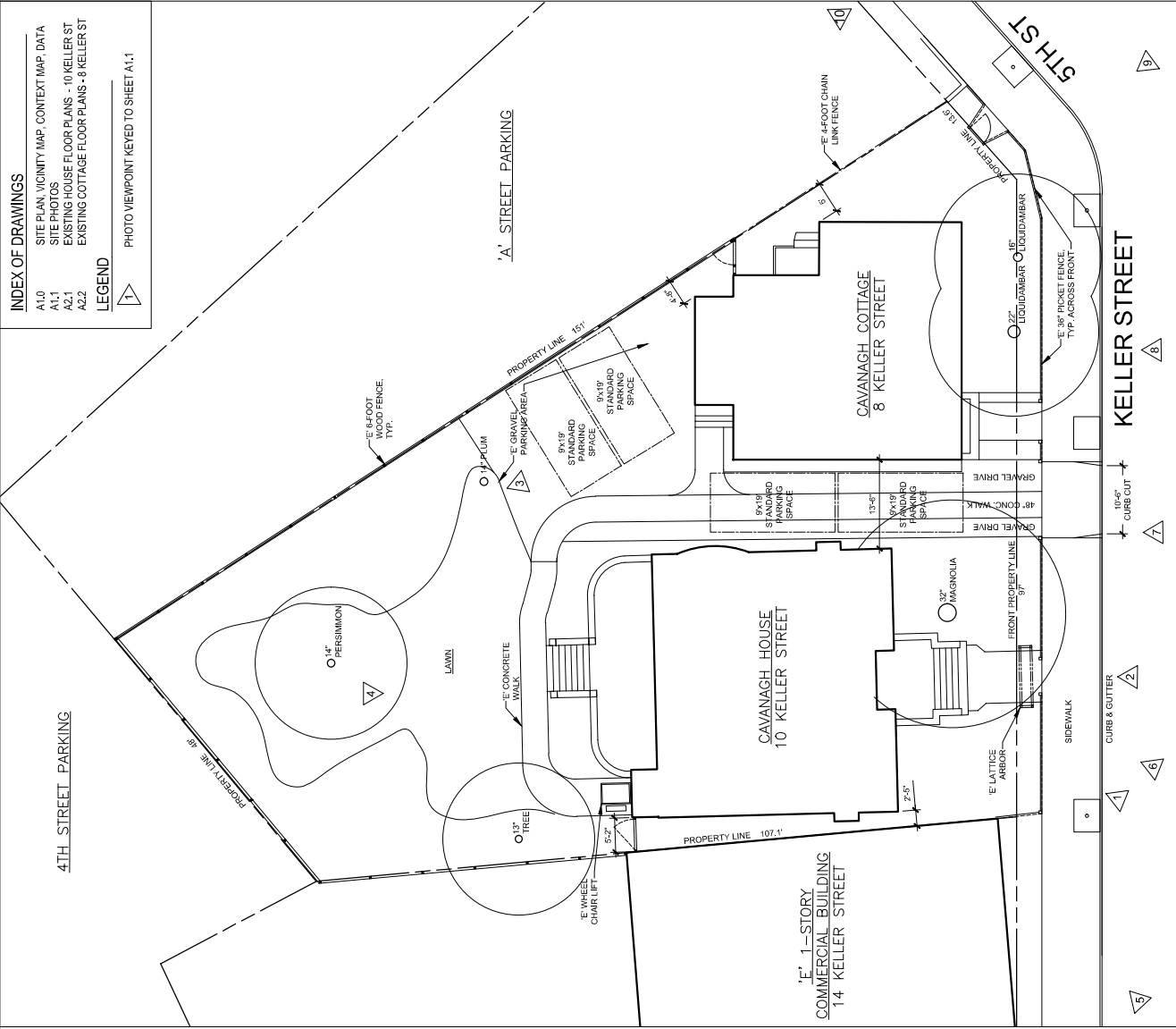
DATE: 7-10-24
 DRAWN: [Signature]

AS NOTED
 SCALE: [Blank]
 CHECKED: [Blank]

SHEET NUMBER
A1.0
 OF [Blank]

Milestone Architects
 816 G Street, Petaluma, CA 94952
 707.765.0255
 www.milestonearch.com

INDEX OF DRAWINGS
 A1.0 SITE PLAN, VICINITY MAP, CONTEXT MAP, DATA
 A1.1 SITE PHOTOS
 A2.1 EXISTING HOUSE FLOOR PLANS - 10 KELLER ST
 A2.2 EXISTING COTTAGE FLOOR PLANS - 8 KELLER ST
LEGEND
 PHOTO VIEWPOINT KEYED TO SHEET A1.1



1 SITE PLAN - 8 & 10 KELLER STREET
 A1.0 1/8" = 1'-0"



2 VICINITY MAP - 8-10 KELLER STREET
 A1.0 1" = 200'



3 CONTEXT MAP - 8-10 KELLER STREET
 A1.0 1" = 100'

AREA SUMMARY

LOT SIZE (ACRES)	0.23
LOT SIZE (SQ. FT.)	10,426
EXISTING HOUSE, 10 KELLER STREET (SQ. FT.)	1447
ATTIC	814
2ND FLOOR	1447
1ST FLOOR	1469
(E) HOUSE TOTAL FLOOR AREA:	3789 SQ. FT.
EXISTING COTTAGE, 8 KELLER STREET (SQ. FT.)	800
2ND FLOOR	800
1ST FLOOR	1240
(E) COTTAGE TOTAL FLOOR AREA	2040 SQ. FT.

NO NEW FLOOR AREA PROPOSED.



MILESTONE ARCHITECTS
 816 G STREET
 PETALUMA, CA 94952
 707.765.0252
 www.milestonearch.com



CAVANAGH HOUSE & COTTAGE
 8 & 10 Keller Street
 Petaluma, CA 94952
 APN 008-051-005-000



[4] 10 KELLER ST. - REAR ELEVATION



[3] 10 KELLER ST. - VIEW FROM NORTHEAST



[2] 10 KELLER ST. - FRONT ENTRANCE



[1] 10 KELLER ST. - FRONT ELEVATION



[7] 10 & 8 KELLER STREET VIEW



[6] 10 & 8 KELLER STREET VIEW



[5] 10 & 8 KELLER STREET - VIEW FROM NORTHWEST



[10] 8 KELLER STREET - COTTAGE - VIEW FROM SOUTH



[8] 8 KELLER STREET - COTTAGE - VIEW FROM SOUTHWEST



[9] 8 KELLER STREET - COTTAGE - FRONT ELEVATION

SITE PHOTOS

CUP SUBMITTAL	AS NOTED
DATE	SCALE
7-10-24	CHECKED
DRAWN	CHECKED

SHEET NUMBER
A1.1
 of

Milestone Architects
 816 G STREET
 PETALUMA, CA 94952
 707.765.0252
 www.milestonearch.com

NOTE: SEE SITE PLAN I(A)1.0 FOR KEYED LOCATIONS OF PHOTO VIEWPOINTS.