



BRODY RANCH

PETALUMA, CALIFORNIA



In partnership with DeNova Homes, the City of Petaluma and Housing Land Trust of Sonoma County are pleased to announce an opportunity for eligible applicants to purchase a new income-restricted residence at Brody Ranch in Petaluma.

For applications and floor plans please visit: www.housinglandtrust.org

SINGLE FAMILY PLAN 2

1,815 sq. ft. | 3 Bedrooms | 3 Baths | Loft | 2-Car Garage

DUPLEX

1,611 sq. ft. | 4 Bedrooms | 2.5 Baths | 2-Car Garage

CONDO UNITS

608 - 1,102 sq. ft. | 1-3 Bedrooms | 1-2 Baths





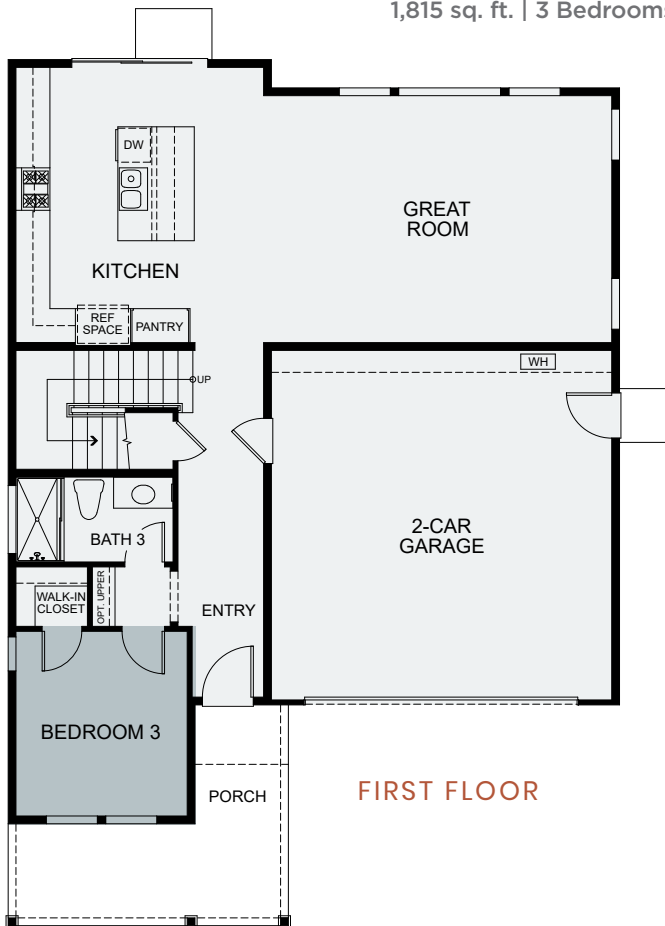
DAYBREAK

AT BRODY RANCH

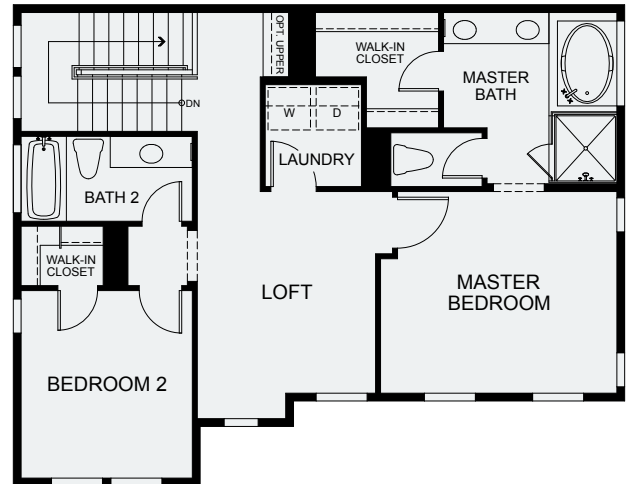


RESIDENCE 2

1,815 sq. ft. | 3 Bedrooms | 3 Baths | Loft | 2-Car Garage



FIRST FLOOR



SECOND FLOOR





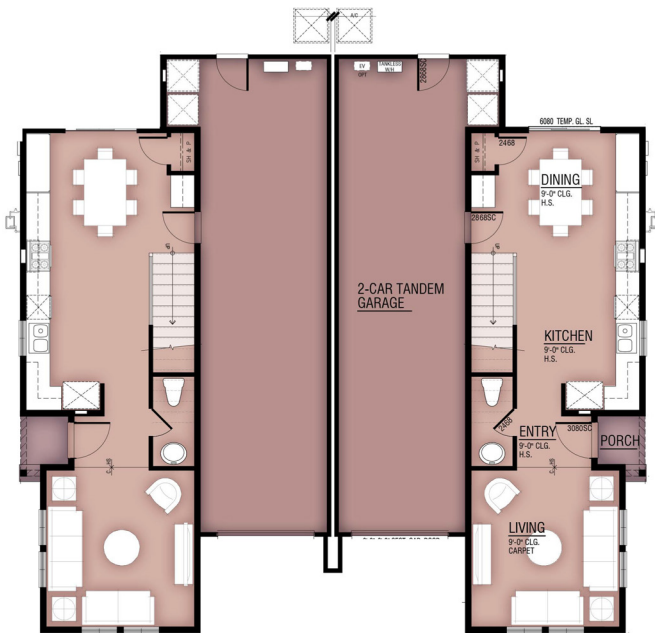
DAYBREAK

AT BRODY RANCH

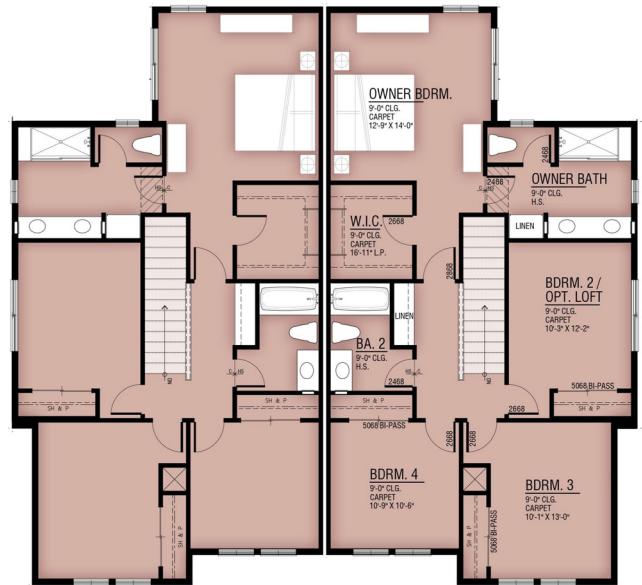


DUPLEX

1,611 sq. ft. | 4 Bedrooms | 2.5 Baths | 2-Car Garage



FIRST FLOOR



SECOND FLOOR





MILL CREEK

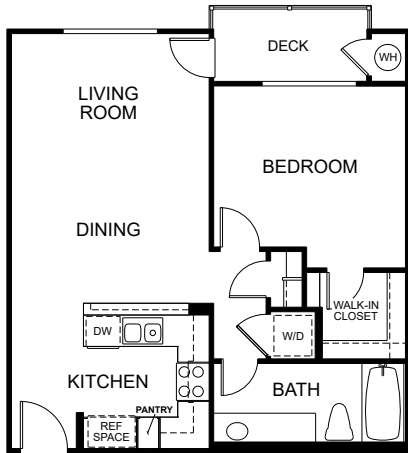
AT BRODY RANCH



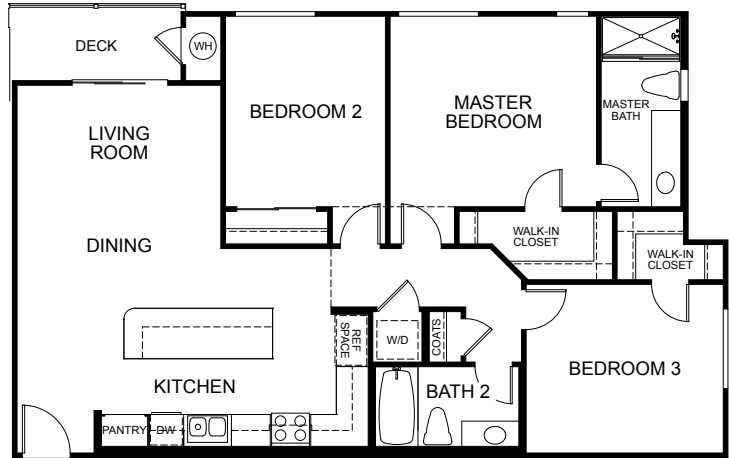
RENDERINGS AND FLOOR PLANS ARE ARTIST'S CONCEPTUAL DRAWINGS. SQUARE FOOTAGE AND ROOM DIMENSIONS ARE APPROXIMATE. WINDOW SIZES, SHAPES AND LOCATIONS VARY PER ELEVATION. DUE TO OUR ONGOING COMMITMENT TO QUALITY, FEATURES, FINISHES, FLOOR PLANS, INFORMATION, AND SPECIFICATIONS ARE SUBJECT TO CHANGE WITHOUT NOTICE.



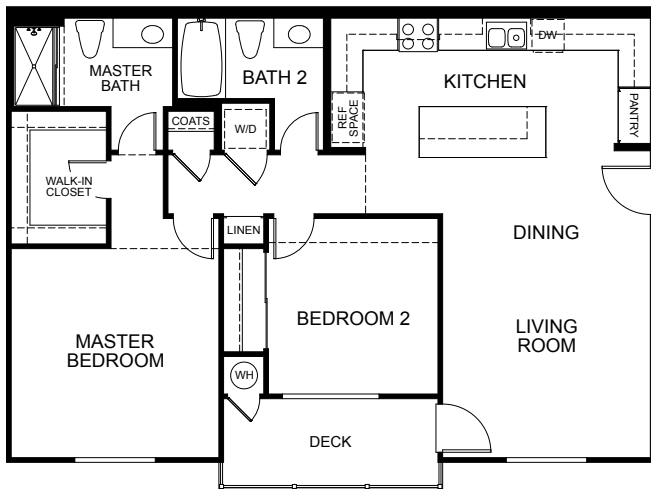
MILL CREEK
AT BRODY RANCH



Plan 1, 1A & 1B - 608 sq.ft.
1 Bedrooms | 1 Baths



Plan 4 & 4A - 1,102 sq.ft.
3 Bedrooms | 2 Baths



Plan 5 & 5A - 1,012 sq.ft.
2 Bedrooms | 2 Baths



Plan 6A, 6B & 6C - 880-893 sq.ft.
2 Bedrooms | 2 Baths

